



Printed on 50% post consumer waste (PCW) fiber manufactured using wind power.

We have tried our very best to accurately represent product colors. However, due to the nature of printed materials, color of actual products may vary slightly. Please request a sample to see actual product color.

[www.interface.com](http://www.interface.com)

**United States Headquarters**  
1280 West Peachtree Street NW  
Atlanta, GA 30309  
1.800.634.6032

**Canadian Headquarters**  
233 Lahr Drive  
Belleville, ON K8N 5S2  
1.800.267.2149 ext.52128

**Brazilian Headquarters**  
Rua Surubim, 577 - Conjuntos  
73/74 7º Andar  
04571-050 - São Paulo - SP  
+ 55 11 2196 0900

**Latin American Headquarters**  
Montes Urales # 415 Piso 6  
Col. Lomas de Chapultepec  
Mexico City, CDMX, C.P. 11000  
Mexico  
+52 55 5520 0195,  
+52 55 2791 6812

CIM # IFS00881 10/2020

Walk on By | LVT



Climate change is undeniable. And reversible. Our mission is to prove it. Join the #ClimateTakeBack and help create a climate fit for life.

Interface®





Add a touch of whimsy to the floor. Walk on By LVT is a fun confetti pattern that elicits joy in 8 color schemes. Use its rainbow of bright colors to coordinate directly with Studio Set LVT as an accent or bring lightness to a space with a confetti-strewn landscape that performs as thoroughly as it delights. No matter your mood, Walk on By will surely brighten your day.

Walk on By LVT is fully recyclable through our **ReEntry™** program and contains a significant percentage of recycled content. As part of Interface's commitment to Climate Take Back®, all of the products we sell are carbon neutral across their full life cycle. **Carbon Neutral Floors™**









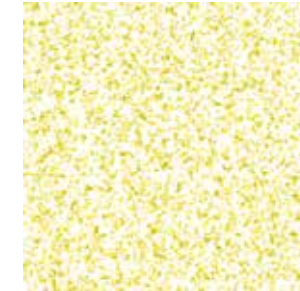
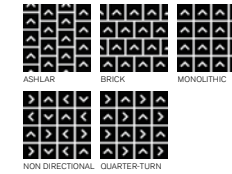


## Specifications

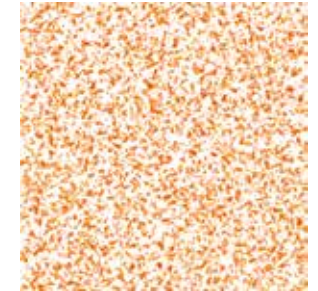
## Walk on By™ Colorline

|                              |   |
|------------------------------|---|
| Product Number               | A015  |
| Product Construction         | High Performance Luxury Vinyl Tile  |
| Class / ASTM F1700           | Class III Printed Vinyl Tile  |
| Wear Layer Thickness         | 22 mil  |
| Total Thickness              | 4.5mm   |
| Backing Class                | Commercial Grade  |
| Finish                       | Ceramor™ Coating  |
| Nominal Dimensions           | 50cm x 50cm (19.69in x 19.69in)   |
| Indoor Air Quality           | GREENGUARD Gold   |
|                              | FloorScore® Certified for low-VOC emissions   |
|                              | CDPH 01350 Compliant  |
| Carbon Offsets               | Carbon Neutral Floors™  |
| Environmental Certifications | NSF/ANSI 332 Silver   |
| LEED v4                      | Contributes to IEO: <i>Low Emitting Materials</i> ;<br><i>M&amp;R</i> ; <i>EPD</i> and <i>EPR</i> |
| End of Life                  | Fully Recyclable into Carpet Tile Backing through ReEntry™  |
| Installation Methods         | Ashlar, Brick, Monolithic, Non Directional, Quarter-Turn  |

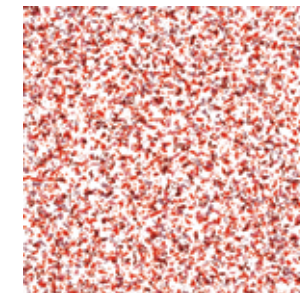
**Now with Recycled Content.** View the full product specification on [interface.com](http://interface.com) for details



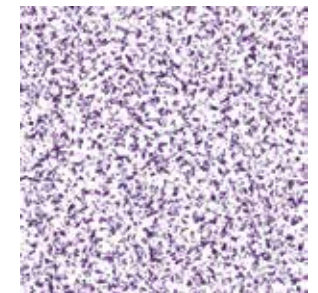
A01503 YELLOW



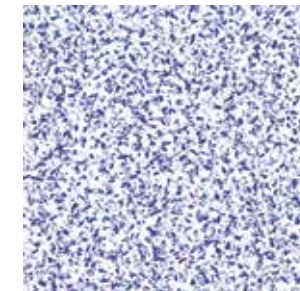
A01504 ORANGE



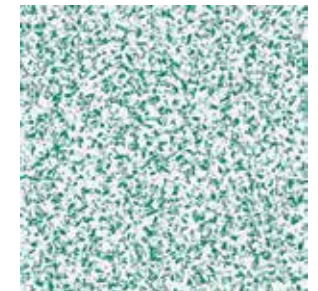
A01505 RED



A01506 VIOLET



A01507 ROYAL BLUE



A01508 DARK GREEN



A01501 POLYCHROME



A01502 MONOCHROME

All product specifications reflect averages derived from product sample testing, are subject to normal manufacturing and testing tolerances and inherent pattern variances, and may be changed without notice. For more information about these and other important attributes of the product(s) described herein, including recycled content and product warranty information, please see our full LVT product disclaimer at [interface.com](http://interface.com).





Interface Modular Resilient Sound Choice LVT and Modular Carpet allow you to seamlessly move from hard to soft surfaces. No transition strip needed.

LVT PRODUCT WALK ON BY COLOR A1508 DARK GREEN  
CARPET PRODUCT AE311 COLOR 104873 IRON

Why Our Modular Resilient Sound Choice™ LVT?

## Integrated System.

*Say goodbye to transition strips and doubling up.* Our Sound Choice LVT is made to work as a system with our modular carpet. The compatible size and height of our products allows you to integrate modular carpet for an inset rug or an adjacent field – no transition strip required. You'll avoid doubling up on materials and save money.

## Real Flexibility.

*Create a unique look that lasts.* Interface modular resilient LVT extends the life of your floor. From simple maintenance like damp mopping to selectively replacing damaged tiles, your flooring investment will stand the test of time - beautifully and effortlessly.

## Circular System.

*Keep flooring out of the landfill.* Our modular resilient LVT is produced with a controlled material stream so it can be reclaimed and recycled into our CQuest™GB recycled content carpet backing through our ReEntry™ program.

## Noise Reduction.

*Silence distractions.* Interface is helping create +Positive spaces™ with our LVT with Sound Choice backing. Sound Choice is a specially formulated backing developed for superior noise reduction, offering you best-in-class performance for reduced impact sound and floor to floor sound transmission.





## High Performance from Top to Bottom.

1. *Ceramor™ Coating.* Minimizes everyday scratching and scuffing.
2. *Wear Layer.* High quality layer enabling 15 years of resilience and performance.
3. *Print Film.* Provides outstanding visuals of natural materials and Interface innovative designs.
4. *Core Sheet.* Creates a thickness for a stronger core and reduces telegraphing from beneath.
5. *Fiberglass.* Adds dimensional stability and controlled flexibility.
6. *Core Sheet.* Creates a thickness for a stronger core and reduces telegraphing from beneath.
7. *Sound Choice™ Backing.* Provides comfort and superior acoustic performance.

## Third Party Certifications.

**Third Party Certification**  
Our Carbon Neutral Floors program is annually verified by a third party.



CERTIFIED BY  
SCS Global Services

*Carbon Neutral Floors.* The flooring products that we sell - carpet tile, LVT, and nora rubber sheets and tiles - are carbon neutral across their full product life cycle. We've taken a holistic approach to achieve carbon neutrality, first through reducing the carbon footprint of our products and then using carbon offsets for the remainder.

*Environmental Product Declaration (EPD).* Interface LVT products are covered by an EPD. An EPD provides a comprehensive statement of product ingredients and environmental impacts based upon life cycle assessment performed to ISO standards.

*Sustainable Assessment.* Interface LVT meets the certification standards of the NSF/ANSI 332 Sustainability Assessment for Resilient Floor Coverings. This standard evaluates the environmental impact of resilient floor covering for its entire life cycle.

*Indoor Air Quality.* All Interface modular flooring products meet the highest standards for indoor air quality. Interface LVT is GREENGUARD Gold and FloorScore® Certified and CDPH 01350 compliant, assuring very low emissions of VOCs.

