

# Look Both Ways Collection

[www.interface.com](http://www.interface.com)

**United States Headquarters**

1280 West Peachtree Street NW  
Atlanta, GA 30309  
1.800.634.6032

**Canadian Headquarters**

233 Lahr Drive  
Belleville, ON K8N 5S2  
1.800.267.2149 ext.52128

**Brazilian Headquarters**

Rua Surubim, 577 - Conjuntos  
73/74 7º Andar  
04571-050 - São Paulo - SP  
+ 55 11 2196 0900

**Latin American Headquarters**

Montes Urales # 415 Piso 6  
Col. Lomas de Chapultepec  
México City, D.F. 11000  
Mexico  
+ 52 55 6395 5100

CIM # IFS00837 06/2019



Climate change is undeniable. And reversible. Our mission is to prove it.  
**Join the #ClimateTakeBack and help create a climate fit for life.**

**Interface®**



Look Both Ways™ Collection

Monolithic textures denoting gravity and substance live with light-hearted color and confetti. Unexpected combinations of materials inspire creative outcomes. Celebrate the mix!

Look Both Ways is a collection of carpet tile and LVT patterns combining Zen-like purity with playfulness. Marrying purpose and function with your intention, these styles create landscapes that perform and delight in infinite ways.

Step it Up™, the foundation of the carpet tile collection, includes the best urban grays plus six streetwear-inspired colors. The other patterns share the same neutral palette, but each has distinctly different textures: Step in Time™ carries the nuance of a crushed velvet; the curves of Step this Way™ are the softer twin to Walk About™ LVT; and Step Aside™ steals the show with a spray of accent colors tossed across the plush finish, elevating the entire collection to an elegant celebration of floors. Step, walk or run, but definitely Look Both Ways for design inspiration.

**Carbon Neutral Floors™** Like all of our products, globally, Look Both Ways is carbon neutral. Join us in creating a climate fit for life. **#ClimateTakeBack**

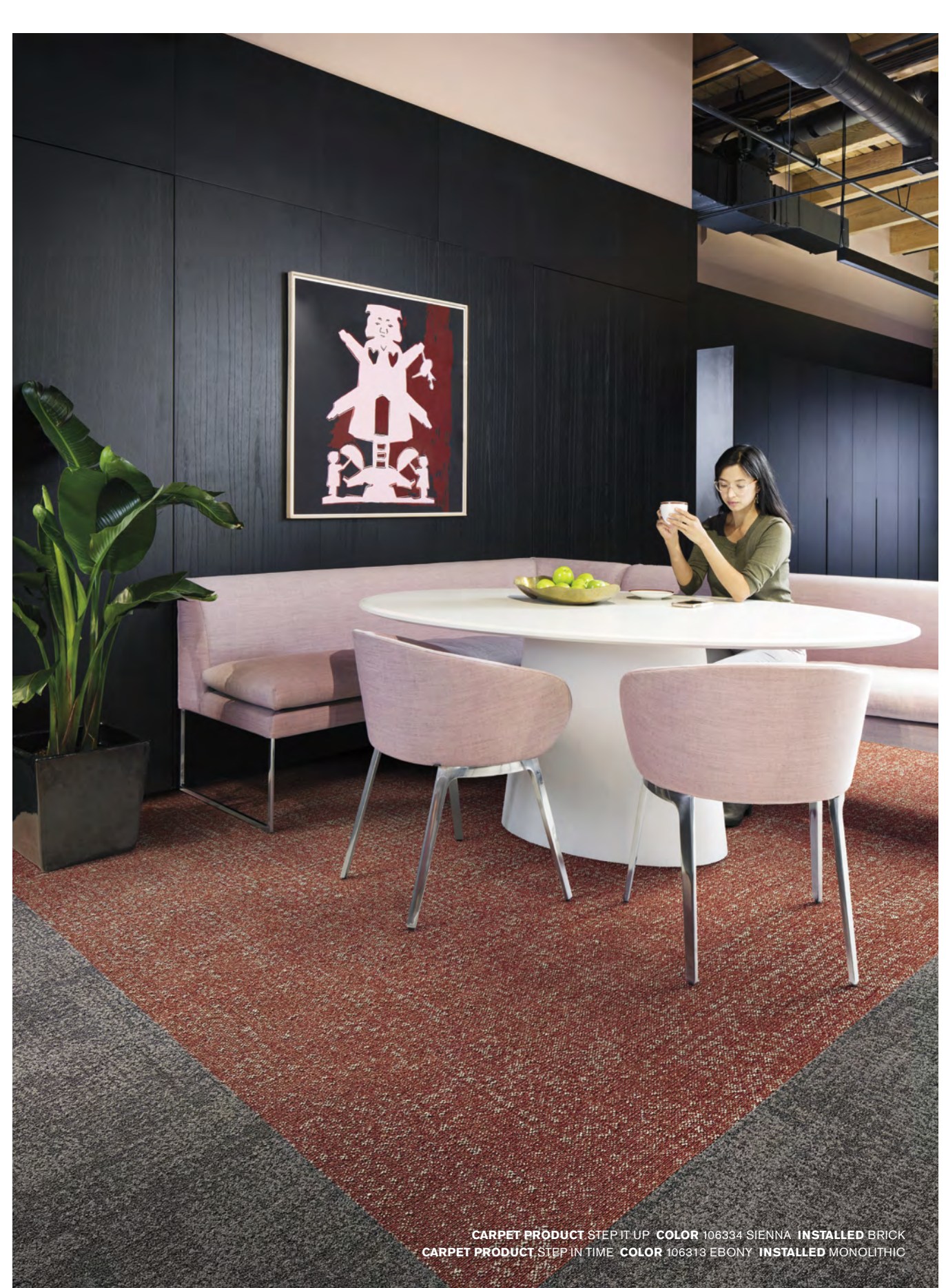






CARPET PRODUCT STEP IT UP COLOR 106336 SLATE INSTALLED BRICK  
LVT PRODUCT WALK ON BY™ COLOR A01502 MONOCHROME INSTALLED MONOLITHIC

[www.interface.com](http://www.interface.com)



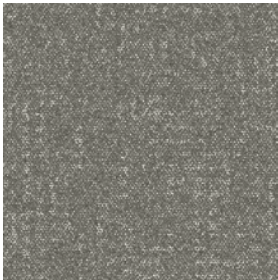
CARPET PRODUCT STEP IT UP COLOR 106334 SIENNA INSTALLED BRICK  
CARPET PRODUCT STEP IN TIME COLOR 106313 EBONY INSTALLED MONOLITHIC



Step it Up™ Colorline



106329 ALBA



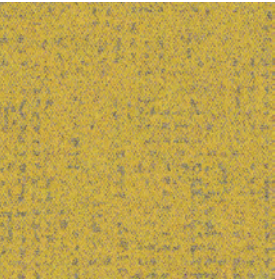
106331 ASH



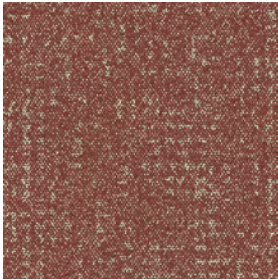
106335 COAL



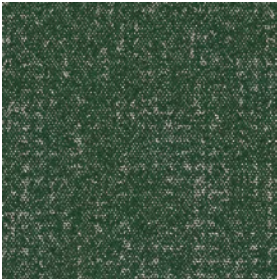
106336 SLATE



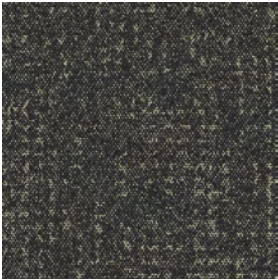
106332 CITRINE



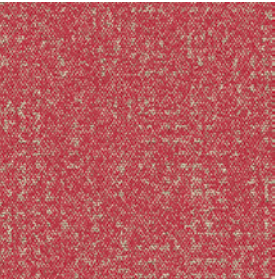
106334 SIENNA



106340 JADE



106333 EBONY



106330 CORALITE



106338 AZURE



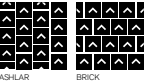
106337 INDIGO



106339 JET

Specifications

Modular, 50cm x 50cm	1473802500
Backing System	GlasBac™ Tile
Yarn Manufacturer	Universal
Yarn System	Post Consumer Content Nylon
Color System	100% Solution Dyed
Construction	Tufted Textured Loop
Lifetime Antimicrobial	Intersept®
Pile Thickness	0.084 in., 2.1 mm
Pile Density	7,714
Total Recycled Content	72%
Indoor Air Quality	CRI Green Label Plus #GLP0820



CARPET PRODUCT STEP IT UP COLOR 106330 CORALITE - INSTALLED BRICK  
LVT PRODUCT WALK OF LIFE COLOR A01203 COOL ASH - INSTALLED MONOLITHIC



Step in Time™ Colorline



106311 ALBA



106312 ASH



106313 EBONY



106314 COAL



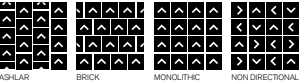
106315 INDIGO



106316 JET

Specifications

Modular, 50cm x 50cm	1417402500
Backing System	GlasBac™ Tile
Yarn Manufacturer	Universal
Yarn System	Post-Consumer Content Nylon
Color System	100% Solution Dyed
Construction	Tufted Sheared
Lifetime Antimicrobial	Intersept®
Pile Thickness	0.083 in., 2.1 mm
Pile Density	10,843
Total Recycled Content	72%
Indoor Air Quality	CRI Green Label Plus #GLP0820

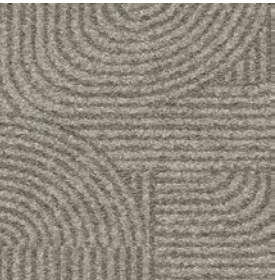


PRODUCT STEP IN TIME COLOR 106312 ASH INSTALLED MONOLITHIC

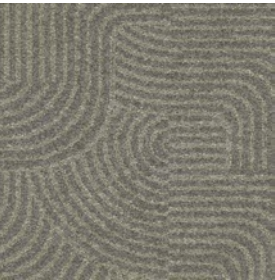




Step this Way™ Colorline



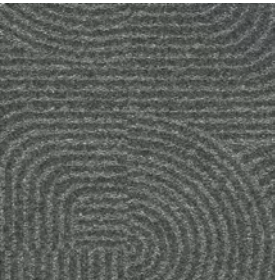
106323 ALBA



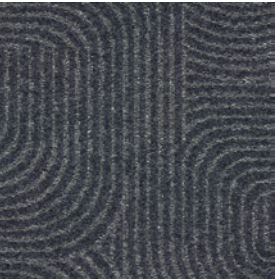
106324 ASH



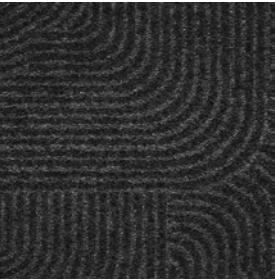
106325 EBONY



106326 COAL



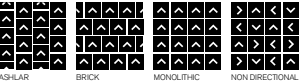
106327 INDIGO



106328 JET

Specifications

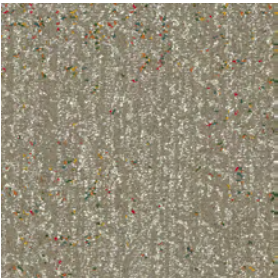
Modular, 50cm x 50cm	1417602500
Backing System	GlasBac™ Tile
Yarn Manufacturer	Universal
Yarn System	Post-Consumer Content Nylon
Color System	100% Solution Dyed
Construction	Tufted Sheared
Lifetime Antimicrobial	Intersept®
Pile Thickness	0.082 in., 2.1 mm
Pile Density	10,537
Total Recycled Content	72%
Indoor Air Quality	CRI Green Label Plus #GLP0820



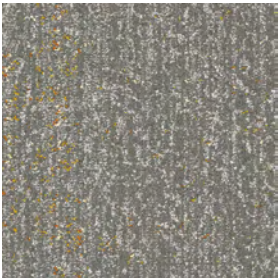




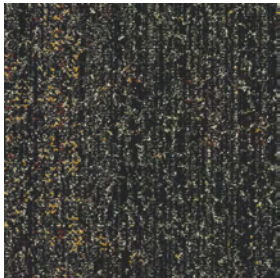
## Step Aside™ Colorline



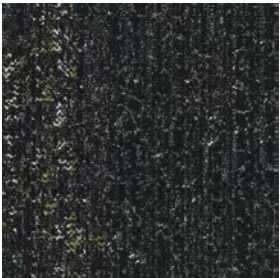
106317 ALBA



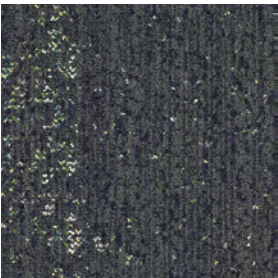
106318 ASH



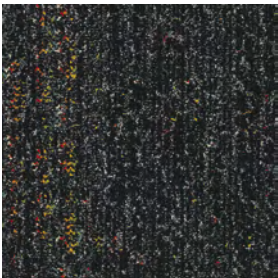
106319 EBONY



106320 COAL



106321 INDIGO



106322 JET

## Specifications

Modular, 50cm x 50cm	1417502500
Backing System	GlasBac™ Tile
Yarn Manufacturer	Universal
Yarn System	Post-Consumer Content Nylon
Color System	100% Solution Dyed
Construction	Tufted Sheared
Lifetime Antimicrobial	Intersept®
Pile Thickness	0.096 in., 2.4 mm
Pile Density	9,750
Total Recycled Content	72%
Indoor Air Quality	CRI Green Label Plus #GLP0820





LVT & Carpet. A power duo.

Look Both Ways combines hard and soft flooring with intentional design, which makes choosing the right materials for your space even easier. Seamlessly move from carpet tile in a private work area to LVT in a busy corridor, without changing patterns or using transition strips. Brighten a small, but heavily trafficked space with a lighter shade of LVT and create nested areas with inset area rugs. Every mix is a match with no sacrifice of performance or aesthetics.





LVT & Carpet. A power duo.





Why Our Modular Flooring?



**Modular Flooring**  
*Performance and flexibility.* Interface's standard backing systems set the industry standard for modular performance. Tiles stay on the floor with no upcurl, no tapping and no rippling effect, yet are easy to selectively replace. Our modular carpet is easier to handle than bulky roll carpet and produces an average of just 3-4% waste compared to roll carpet's average of 14%. And it installs seamlessly with our LVT, no transition strips needed.



**Carbon Neutral Floors™**  
*Create a climate fit for life.* All Interface flooring sold globally is third party verified carbon neutral. We've taken a holistic approach to achieve carbon neutrality, first through reducing the carbon footprint of our products and then using carbon offsets for the remainder, including the emissions from raw materials, our manufacturing processes and product use to end of life.



**TacTiles™**  
*No glue installation.* Our revolutionary TacTiles installation system eliminates the need for glue, adhering tiles securely together to form a floor that “floats” for greater flexibility, easier replacement and long-term performance. The result? Less mess, less waste and virtually no VOCs, not to mention an environmental footprint that is over 90% lower than that of traditional glue adhesives.



**Intersept®**  
*Mold protection.* Our proprietary preservative, Intersept, protects our modular carpet against mold growth and odor-causing bacteria—guaranteed. Intersept treated carpet, with proper maintenance, shows no mold or bacterial growth when tested per the ASTM E2471 Standard Test Method. Intersept is EPA approved for safe use in carpet, water insoluble and contains no halogens, heavy metals, phenols or formaldehyde.



**ReEntry®**  
*Recyclable is now a reality.* Through our ReEntry program and partnerships with our fiber suppliers and recycling centers throughout North America, separated Type 6 and 6,6 nylon are recycled into new 6 and 6,6 nylon while separated GlasBac®, GlasBacRE, similar competitive backings and our own LVT are recycled into new GlasBacRE non-virgin PVC backing using our Cool Blue™ technology. The result? Products with up to 89% total recycled content, including as much as 27% post-consumer content.



**Sustainable Choice**  
*Environmental responsibility.* More than 95% of Interface products manufactured in the Americas carry the GreenCircle Certified Environmental Facts label, which has verified that standard Interface products are manufactured using 99% renewable energy and offer a minimum of 66% and 80% total recycled content when backed with GlasBac and GlasBacRE backing respectively.

**Samples**  
Order samples at [www.interface.com](http://www.interface.com). You'll receive email order confirmations, 24/7 access to order status and more. Not near a computer? You can also request samples by calling one of the numbers below.

United States 1.877.605.1500	Canada 1.866.398.3192
Brazil + 55 11 2196 0900	Latin America + 52 55 6395 5100

**[www.interface.com](http://www.interface.com)**  
Register at [www.interface.com](http://www.interface.com) to:

- Browse products and order samples
- View carpet in a variety of room scenes
- Browse floor designs, change colors, view as a grid or in a room, download and share
- Use our LEED Calculator
- Check order status and inventory availability
- Sign up to get the latest information on Interface products and news

**InterCircle™ Sample Return**  
Help us close the loop on the carpet sampling process. Through our InterCircle Sample Return program, sample materials stay out of the landfill and are re-used as samples until it is time to recycle them into new carpet. By reducing sample production material and diverting old materials from the landfill, we can reduce our overall environmental footprint.

Call 1.877.605.1500 (U.S.) or 1.866.398.3192 (Canada) to order a sample return bag with a prepaid return label.

Transparency and certified sustainability leadership come standard on all Interface products, including published ingredients in HPDs (Health Product Declarations) or Declare Labels. In addition, more than 99% of our products globally have a published EPD (Environmental Product Declaration), which evaluates consistent factors based on full life cycle assessment (LCA). And, all Interface products with GlasBacRE backing are certified to the Platinum level of the NSF/ANSI 140 Sustainable Assessment for Carpet. GlasBac backed products meet the Gold level. NSF/ANSI 140 certified products contribute toward a USGBC or CaGBC LEED credit.

Third Party Certification



**Bureau Veritas** – All Interface flooring sold globally is third party verified carbon neutral.



**Environmental Product Declaration (EPD)** – A statement of product ingredients and environmental impacts over the entire life cycle of a product. A comprehensive life cycle assessment (LCA) is performed to ISO standards to develop an EPD, after which both the EPD and LCA must be third party verified.



**Sustainable Assessment for Carpet** – The only carpet sustainability standard in North America that evaluates the environmental impact of carpet for its entire lifecycle.



**CRI Green Label Plus** – An independent testing program that identifies carpet and adhesives with very low emissions of VOCs to help improve indoor air quality.

All product specifications reflect averages derived from product sample testing, are subject to normal manufacturing and testing tolerances and inherent pattern variances, and may be changed without notice. For more information about these and other important attributes of the product(s) described herein, including recycled content and product warranty information, please see [www.interface.com/disclaimer](http://www.interface.com/disclaimer).



Printed on 50% post consumer waste (PCW) fiber manufactured using wind power.



We have tried our very best to accurately represent product colors. However, due to the nature of printed materials, color of actual products may vary slightly. Please request a sample to see actual product color.