

Lasting Impressions Collection | **LVT**

Heirloom
Plaster

Interface[®]

The power of lasting design

Explore the depth, dive into the craft. Lasting Impressions™ brings ancient ways to modern spaces.

In Heirloom™, the textures of tatami weaving make for a fresh take on tradition. While Plaster™ takes inspiration from hand-finishes and natural patinas.

Two heritage styles, each drawing on crafts handed down. And your chance to take these legacies and make them your own.





PRODUCT PLASTER COLOUR CINDER
PRODUCT HEIRLOOM COLOUR JUTE INSTALLED ASHLAR



PRODUCT HEIRLOOM COLOUR CANVAS INSTALLED ASHLAR





Heirloom Colour Range



A03601 RICE PAPER



A03602 CANVAS



A03603 MERINO WOOL



A03604 SEPIA



A03605 JUTE



A03606 SWEETGRASS

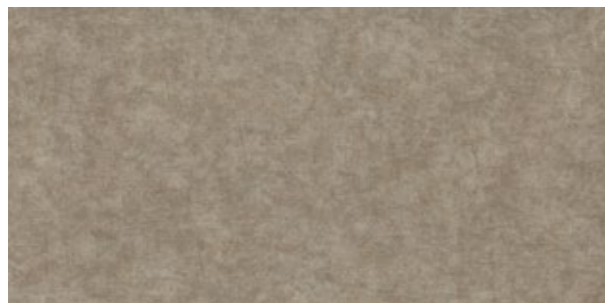


A03607 BERYL

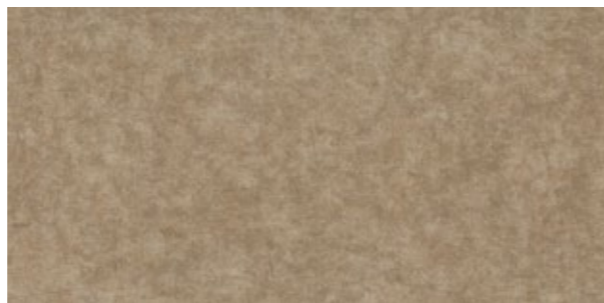


A03608 DYED INDIGO

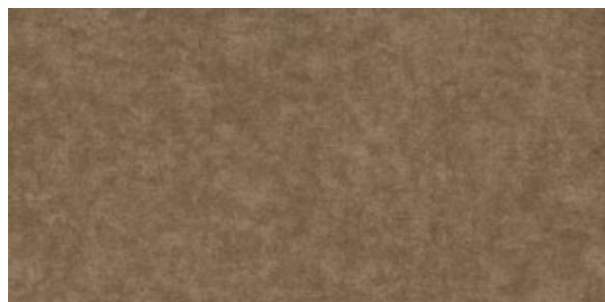
Plaster Colour Range



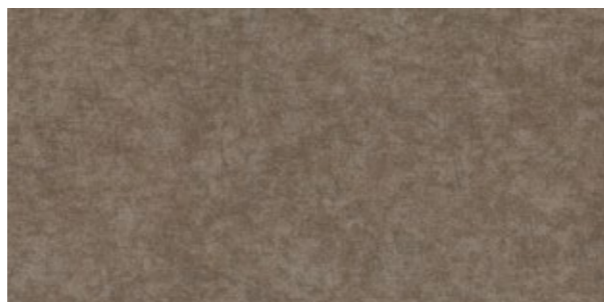
A03701 COBBLESTONE



A03702 EARTHENWARE



A03703 BROWNSTONE



A03704 CINDER



Specifications

Lasting Impressions Collection | LVT

Product Name / Number	Heirloom - A036 Plaster - A037
Product Construction	High Performance Luxury Vinyl Tile
Wear Layer Thickness	0.55 mm
Total Thickness (Metric)	4.5 mm
Classification	ISO 10874 Class 33 (heavy contract) ISO 10874 Class 42 (light industrial general)
Acoustic Impact Noise Reduction	ISO 10140-3 $\Delta L_w = 16\text{dB}$
Finish	CERAMOR+™ UV Stabilized Ceramic Bead Coating
Nominal Dimensions	Heirloom - A036 - 25 x 100 cm Plaster - A037 - 50 x 100 cm
Backing	Sound Choice™ Acoustic Backing

Performance Specifications

Critical Heat Flux	AS ISO 9239-1	>7kW/m ²
Smoke Rate	AS ISO 9239-1	<750%.min
Size, Tolerance	ISO 24342	>400 mm < 0.35 mm
	ISO 24342	<400 mm < 0.25 mm
Dimensional Stability	ISO 23999	<0.25%
Thickness	ISO 24346	Average value + 0.20mm
Resistance to Light	ISO 105-B02	≥6
Resistance to Heat	ASTM F1514	$\Delta E < 8$ avg Max
Resistance to Chemicals	EN-ISO 26987	Pass
Reaction to Fire	EN ISO 13501-1	Class Bfl-S1
VOC Test	ISO 10580	Pass
Flexibility	ISO 24344 Method A	Pass
Static Load	ASTM F970	≤0.005" with 1500 psi
Castor chair	ISO 4918	Pass
Thermal Conductivity	EN 12667	0.16 W/mK
Static Electrical	EN 1815	<2kV
Slip Resistance	AS 4586-2013	P3 / R10

Environmental Specifications

Total Recycled Content	39%
Carbon Footprint / m ² (Cradle to Gate)*	9.2 kg CO ₂
Sustainability Assessment	NSF/ANSI 332, Meets Certification Guidelines
LEED v4	Contributes to IEQ: Low Emitting Materials; M&R: EPD and EPR
Global Green Tag	Green Rate Level A

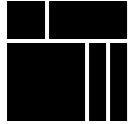
Technical Information

Installation	See Interface LVT Installation Guidelines online
Maintenance	See Interface LVT Maintenance Guidelines online
Warranty	15 Year Standard LVT Product Warranty
Installation Method	Ashlar



* Please refer to [interface.com](https://www.interface.com) for the latest figures from our EPD.

Why Our Modular Resilient Sound Choice™ LVT?



Integrated System

Say goodbye to transition strips and doubling up. Our modular resilient floorings are made to work as a system with our modular carpet tile. The compatible size and height of our products allow you to integrate modular carpet for an inset rug or an adjacent field – no transition strip required. You'll avoid doubling up on materials and save cost.



Easy Maintenance

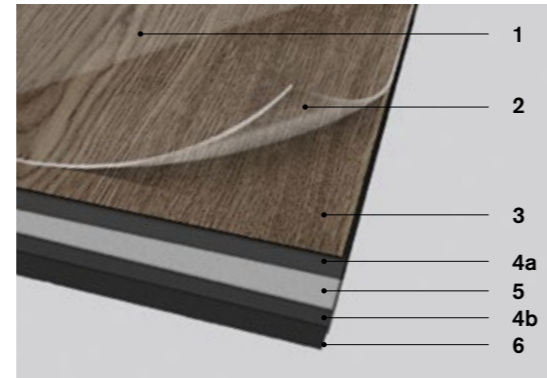
Create a unique look that lasts. Interface Sound Choice LVT extends the life of your floor. From simple maintenance like damp mopping to selectively replacing damaged tiles, your flooring investment will stand the test of time - beautifully and effortlessly.



Noise Reduction

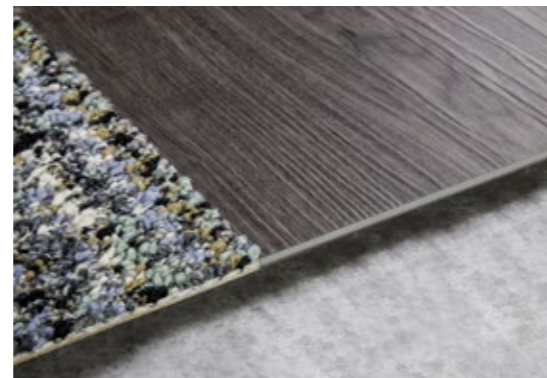
Less distractions. Sound Choice is a specially formulated backing for superior noise reduction, offering high levels of impact sound reduction.

High Performance from Top to Bottom



- 1. Ceramor™+ Coating.** Minimizes everyday scratching and scuffing and also provides enhanced slip resistance.
- 2. Wear Layer.** High quality 0.55mm layer enabling 15 years of resilience and performance.
- 3. Print Film.** Provides outstanding visuals of natural materials and Interface innovative designs.
- 4. Core Sheet.** Creates thickness for a stronger core and reduces telegraphing from beneath.
- 5. Fiberglass.** Adds dimensional stability and controlled flexibility.
- 7. Sound Choice™ Backing.** Provides comfort and superior acoustic performance.

Interface Sound Choice LVT and carpet tile allow you to seamlessly move from hard to soft surfaces. No transition strip needed.



Environmental Product Declaration (EPD)

Interface LVT products are covered by an EPD. An EPD provides a comprehensive statement of product ingredients and environmental impacts based upon life cycle assessment performed to ISO standards.



GREENGUARD Gold & FloorScore®

Meeting the highest standards for indoor air quality and assuring very low emissions of VOCs, Interface LVT is GREENGUARD Gold and FloorScore® Certified and CDPH 01350 compliant.



NSF/ANSI 332 Silver

This standard evaluates the environmental impact of resilient floor covering for its entire life cycle.



Global GreenTag GreenRate - Level A

Global GreenTag's GreenRate certification is a product rating system recognised by the Green Building Council of Australia and Green Building Council of New Zealand. Its assessment scheme aligns to the Green Star® Responsible Products program. All Interface products are certified "Level A".



Best Practice Guidelines for PVC

Our product proudly holds the Best Environmental Practice (BEP) PVC certification, a recognition of compliance with stringent environmental and social criteria in PVC manufacturing. This certification is a key contributor to Green Star certification, aligning with the GBCA's Responsible Products Framework. Our commitment to BEP guidelines demonstrates our dedication to environmental responsibility and product excellence.



Health Product Declaration (HPD)

A transparency tool for evaluating if a product includes materials of concern and whether it supports Green Chemistry.

Do more on [interface.com](https://www.interface.com)

- Browse products, save and share favourites
- See images of products in a variety of room scenes
- Browse floor designs, change colours, upload your own image, download and share
- Get full specifications, sustainability certifications and more
- Sign up to get the latest information on Interface products and news

Our EPDs and certifications contribute credits towards Green Building Council's Green Star® Responsible Products program.

Green Star is the Green Building Council of Australia's sustainability rating system for the built environment. It is used to rate new and existing buildings, new fit-outs, and new precinct developments. The Green Building Council of Australia recognises Responsible Products that may contribute to a Green Star rating through its Responsible Credits.

We have tried our very best to accurately represent product colours. However, due to the nature of printed materials, colour of actual products may vary slightly. Please request a sample to see actual product colour.

Production specifications are subject to normal manufacturing tolerances and may be changed without notice. Slight variation in colour among different production lots are normal and should be considered in the overall installation plan. Products covered by manufacturer's written warranty only. All other warranties, including without limitation any implied warranties of merchantability of fitness for particular purpose, are hereby disclaimed. Contact your representative for written warranty information.

www.interface.com

Australia

Interface Australia
local toll free: 1800 804 361

India

Interface India
tel: +91 76249 17934

South East Asia

Interface Asia
tel: +65 6478 1510

South Korea

Interface South Korea
tel: +82 2 555 1734

Japan

Interface Japan
tel: +81(0)3-6892-5513

Beijing

Interface China
tel: +86 10 6590 7810

Hong Kong

Interface China
tel: +852 2802 0838

Shanghai

Interface China
tel: +86 21 6340 3868