



Printed on 50% post consumer waste (PCW) fiber manufactured using wind power.

We have tried our very best to accurately represent product colors. However, due to the nature of printed materials, color of actual products may vary slightly. Please request a sample to see actual product color.

www.interface.com

United States Headquarters

1280 West Peachtree Street NW
Atlanta, GA 30309
1.800.634.6032

Canadian Headquarters

233 Lahr Drive
Belleville, ON K8N 5S2
1.800.267.2149 ext.52128

Brazilian Headquarters

Av. Das Nações Unidas 14261
25 andar, sala 25 - 122, Brooklin Paulista
São Paulo SP 04578 - 000
Brasil
+ 5511.2196.0900

Latin American Headquarters

Montes Urales # 415 Piso 6
Lomas de Chapultepec
Miguel Hidalgo, CDMX
11000 Mexico
+ 52.55.2791.6812

CIM # IFS00894 03/2021



Climate change is undeniable. And reversible. Our mission is to prove it. Join the #ClimateTakeBack and help create a climate fit for life.



Vinyl Sheet
Interlaced Collection

Crossed
Meshed
Looped

Interface®



Cover Your Flooring Needs With One Trusted Provider

As a global flooring company, Interface is dedicated to helping our healthcare customers create high-performance spaces that contribute to health and well-being. We continue to expand our system of products to meet the space specific needs of healthcare facilities by introducing Interlaced™ Collection vinyl sheet into the rest of our portfolio of products – carpet tile, LVT and nora® rubber.

Learn more at interface.com/healthcare

Interlaced™ Collection

Hard-working flooring inspired by soft colors and natural textiles.

Interface is dedicated to helping you create beautiful, high-performance spaces that support the health and well-being of patients and caregivers.

Our vinyl sheet flooring is the perfect solution for patient rooms and other healing spaces that require seamless installation, ease of maintenance, stain resistance and slip resistance, along with superior durability.

Interlaced Collection's three monolithic styles – Meshed™, Crossed™ and Looped™ – take patterning cues from natural fabrics in eight nature-inspired colors. These products provide the design flexibility to create attractive, hard-working and supportive spaces that improve operational efficiencies and wellness – helping you reach your facilities goals.

Partnering with Interface as your single source provider for healthcare flooring also means making a positive impact on the environment. All of the products we sell are third-party verified carbon neutral through our Carbon Neutral Floors™ program.





Specifications

Product Number	A02
Product Construction	Heterogeneous Vinyl Sheet
Type/ Grade/ ASTM F1303	Type I, Grade 1
Wear Layer Thickness	(ASTM F410) 28 mil
Total Thickness	(ASTM F386) 2.5 mm
Backing Class	Class B
Finish	Ceramor™ Coating
Nominal Dimensions	1.83 m x 18 m (6 ft x 59.06 ft)
Usable Dimensions	1.80 m x 18 m (5 ft 11 in x 59.06 ft)
IIC Sound Rating	(ASTM E492-09) 58 IIC
Delta IIC Sound Rating	(ASTM E2179) Δ 11 IIC
Slip Resistance	(ASTM D2047) > 0.55 wet/dry, ADA Compliant
Static Load Limit	(ASTM F970) 1000 psi
Rolling Load Limit	(ASTM F2753) ≤ 550 lbs / sq. inch, with no forklift traffic
Abrasion Resistance	(EN660-2) Class T Wear Layer, Fv ≤ 2.0mm ³
Flexibility	(ASTM F137) Passes
Resistance to Heat	(ASTM F1514) Passes
Resistance to Light	(ASTM F1515) Passes
Radiant Flux	(ASTM E648) Class I
Smoke Density	(ASTM E662) < 450
Residual Indentations	(ASTM F1914) Passes
Resistance to Chemicals	(ASTM F925) Passes
Full Life Cycle Carbon Emissions	Carbon Neutral Floors™
Total Recycled Content (Pre Consumer)	25%
Indoor Air Quality	GREENGUARD Gold FloorScore™ Certified CDPH 01350 Compliant Free of Ortho-phthalates, Added Formaldehyde and Heavy Metal Stabilizers
Material Composition	Environmental Product Declaration
Disclosure of Environmental Impacts	Health Product Declaration
Disclosure of Product Ingredients	Contributes to Multiple IEQ and MR Credits
LEED v4	354.6 sf (32.9 m ²)
Quantity per Roll	287 lbs (130 kgs)
Weight per Roll	12
Rolls per Pallet	10
Pallets per Truckload	See Interface Vinyl Sheet Installation Instructions online
Installation	See Interface Vinyl Sheet Maintenance Guidelines online
Maintenance	15 Year Standard Vinyl Sheet Warranty
Warranty	10 Year Limited Under Bed Warranty
Warranty; Under Bed	

Installation Method



DIRECTIONAL



BROWSE IMAGES
ORDER SAMPLES

Crossed™ Colorline



A02001 BISQUE
HEAT WELD 1123363



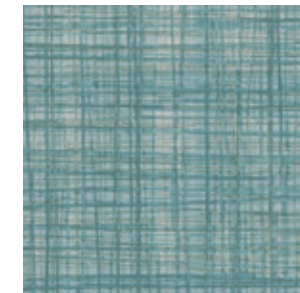
A02002 TAUPE
HEAT WELD 1123364



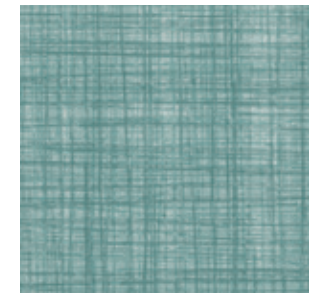
A02003 PUTTY
HEAT WELD 1123365



A02004 GREIGE
HEAT WELD 1123366



A02005 DOVE
HEAT WELD 1123367



A02006 ALOE
HEAT WELD 1123368



A02007 SAGE
HEAT WELD 1123369



A02008 CELERY
HEAT WELD 1123370

All product specifications reflect averages derived from product sample testing, are subject to normal manufacturing and testing tolerances and inherent pattern variances, and may be changed without notice. For more information about these and other important attributes of the product(s) described herein, including recycled content and product warranty information, please see our full vinyl sheet product disclaimer at interface.com.

Specifications

Product Number	A03
Product Construction	Heterogeneous Vinyl Sheet
Type/ Grade/ ASTM F1303	Type I, Grade 1
Wear Layer Thickness	(ASTM F410) 28 mil
Total Thickness	(ASTM F386) 2.5 mm
Backing Class	Class B
Finish	Ceramor™ Coating
Nominal Dimensions	1.83 m x 18 m (6 ft x 59.06 ft)
Usable Dimensions	1.80 m x 18 m (5 ft 11 in x 59.06 ft)
IIC Sound Rating	(ASTM E492-09) 58 IIC
Delta IIC Sound Rating	(ASTM E2179) Δ 11 IIC
Slip Resistance	(ASTM D2047) > 0.55 wet/dry, ADA Compliant
Static Load Limit	(ASTM F970) 1000 psi
Rolling Load Limit	(ASTM F2753) ≤ 550 lbs / sq. inch, with no forklift traffic
Abrasion Resistance	(EN660-2) Class T Wear Layer, Fv ≤ 2.0mm ³
Flexibility	(ASTM F137) Passes
Resistance to Heat	(ASTM F1514) Passes
Resistance to Light	(ASTM F1515) Passes
Radiant Flux	(ASTM E648) Class I
Smoke Density	(ASTM E662) < 450
Residual Indentations	(ASTM F1914) Passes
Resistance to Chemicals	(ASTM F925) Passes
Full Life Cycle Carbon Emissions	Carbon Neutral Floors™
Total Recycled Content (Pre Consumer)	25%
Indoor Air Quality	GREENGUARD Gold FloorScore™ Certified CDPH 01350 Compliant Free of Ortho-phthalates, Added Formaldehyde and Heavy Metal Stabilizers
Material Composition	Environmental Product Declaration
Disclosure of Environmental Impacts	Health Product Declaration
Disclosure of Product Ingredients	Contributes to Multiple IEQ and MR Credits
LEED v4	354.6 sf (32.9 m ²)
Quantity per Roll	287 lbs (130 kgs)
Weight per Roll	12
Rolls per Pallet	10
Pallets per Truckload	See Interface Vinyl Sheet Installation Instructions online
Installation	See Interface Vinyl Sheet Maintenance Guidelines online
Maintenance	15 Year Standard Vinyl Sheet Warranty 10 Year Limited Under Bed Warranty
Warranty	
Warranty; Under Bed	

Installation Method



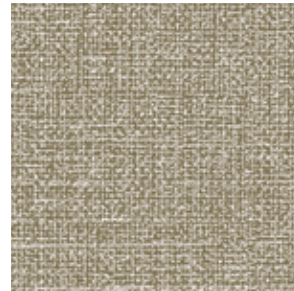
DIRECTIONAL



BROWSE IMAGES
ORDER SAMPLES

All product specifications reflect averages derived from product sample testing, are subject to normal manufacturing and testing tolerances and inherent pattern variances, and may be changed without notice. For more information about these and other important attributes of the product(s) described herein, including recycled content and product warranty information, please see our full vinyl sheet product disclaimer at interface.com.

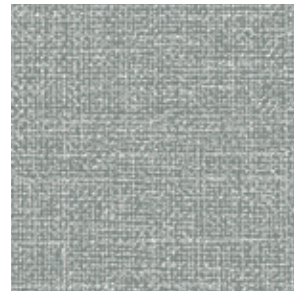
Meshed™ Colorline



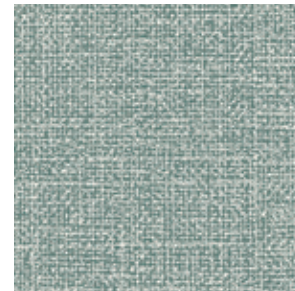
A03001 BISQUE
HEAT WELD 1123363



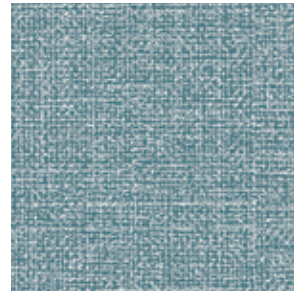
A03002 TAUPE
HEAT WELD 1123364



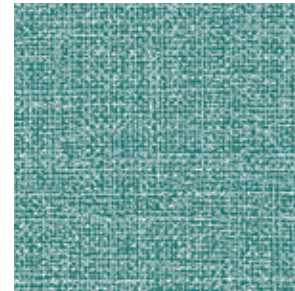
A03003 PUTTY
HEAT WELD 1123365



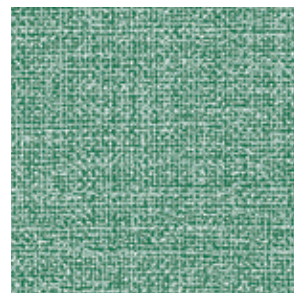
A03004 GREIGE
HEAT WELD 1123366



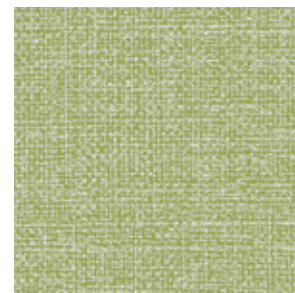
A03005 DOVE
HEAT WELD 1123367



A03006 ALOE
HEAT WELD 1123368



A03007 SAGE
HEAT WELD 1123369



A03008 CELERY
HEAT WELD 1123370





Specifications

Product Number	A01
Product Construction	Heterogeneous Vinyl Sheet
Type/ Grade/ ASTM F1303	Type I, Grade 1
Wear Layer Thickness	(ASTM F410) 28 mil
Total Thickness	(ASTM F386) 2.5 mm
Backing Class	Class B
Finish	Ceramor™ Coating
Nominal Dimensions	1.83 m x 18 m (6 ft x 59.06 ft)
Usable Dimensions	1.80 m x 18 m (5 ft 11 in x 59.06 ft)
IIC Sound Rating	(ASTM E492-09) 58 IIC
Delta IIC Sound Rating	(ASTM E2179) Δ 11 IIC
Slip Resistance	(ASTM D2047) > 0.55 wet/dry, ADA Compliant
Static Load Limit	(ASTM F970) 1000 psi
Rolling Load Limit	(ASTM F2753) ≤ 550 lbs / sq. inch, with no forklift traffic
Abrasion Resistance	(EN660-2) Class T Wear Layer, Fv ≤ 2.0mm ³
Flexibility	(ASTM F137) Passes
Resistance to Heat	(ASTM F1514) Passes
Resistance to Light Radiant Flux	(ASTM F1515) Passes
Smoke Density	(ASTM E648) Class I
Residual Indentations	(ASTM E662) < 450
Resistance to Chemicals	(ASTM F1914) Passes
Full Life Cycle Carbon Emissions	(ASTM F925) Passes
Total Recycled Content (Pre Consumer)	Carbon Neutral Floors™
Indoor Air Quality	25%
Material Composition	GREENGUARD Gold FloorScore™ Certified CDPH 01350 Compliant Free of Ortho-phthalates, Added Formaldehyde and Heavy Metal Stabilizers
Disclosure of Environmental Impacts	Environmental Product Declaration
Disclosure of Product Ingredients	Health Product Declaration
LEED v4	Contributes to Multiple IEQ and MR Credits
Quantity per Roll	354.6 sf (32.9 m ²)
Weight per Roll	287 lbs (130 kgs)
Rolls per Pallet	12
Pallets per Truckload	10
Installation	See Interface Vinyl Sheet Installation Instructions online
Maintenance	See Interface Vinyl Sheet Maintenance Guidelines online
Warranty	15 Year Standard Vinyl Sheet Warranty
Warranty; Under Bed	10 Year Limited Under Bed Warranty

Installation Method



DIRECTIONAL

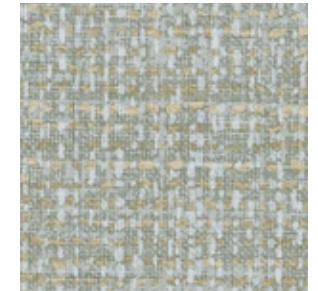


BROWSE IMAGES
ORDER SAMPLES

Looped™ Colorline



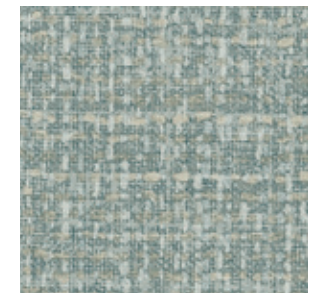
A01001 BISQUE
HEAT WELD 1123363



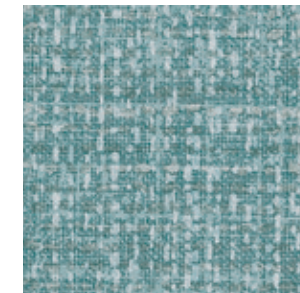
A01002 TAUPE
HEAT WELD 1123364



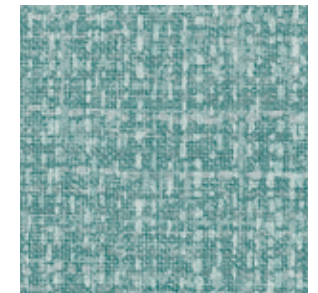
A01003 PUTTY
HEAT WELD 1123365



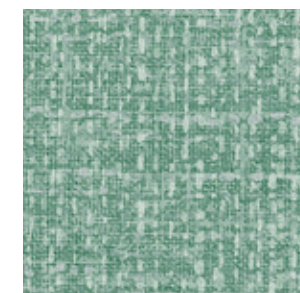
A01004 GREIGE
HEAT WELD 1123366



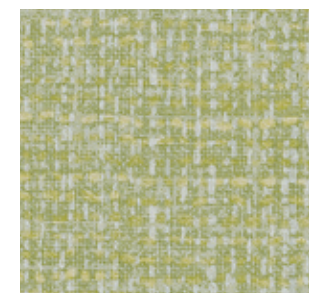
A01005 DOVE
HEAT WELD 1123367



A01006 ALOE
HEAT WELD 1123368



A01007 SAGE
HEAT WELD 1123369



A01008 CELERY
HEAT WELD 1123370

All product specifications reflect averages derived from product sample testing, are subject to normal manufacturing and testing tolerances and inherent pattern variances, and may be changed without notice. For more information about these and other important attributes of the product(s) described herein, including recycled content and product warranty information, please see our full vinyl sheet product disclaimer at interface.com.

Why Interface Heterogeneous Vinyl Sheet?

Performance



Durability

Our Ceramor™ coating and 28 mil wear layer minimize scratching and scuffing and protect the print layer for long-lasting beauty, backed by a 15-year warranty.



Easy Maintenance

Stain resistant flooring that is easy to clean means a lower cost of ownership over the life of your floor.



Safety

Product construction, including wear layer embossing, helps prevent slips, trips and falls without impeding push pull in rolling loads.



Superior Technical Service

Our support and training with key personnel in healthcare facilities helps mitigate risk, ensure best practices and improve the longevity of the floor.

Smart Design



Integrated System

Our system of flooring products offers the flexibility to meet space-specific performance and design needs of any space in your healthcare facility at any budget.



Biophilic Design

Nature-inspired elements in a monolithic aesthetic help you create soothing, restorative spaces that benefit patients, caregivers and family alike.

IDS

Interface Design Studio

Our trained designers work with you to provide product suggestions, space specific floor designs or full floor plans, making your design projects easier from beginning to end.

Sustainability



Climate Take Back™

Our mission, Climate Take Back, invites you to join us as we commit to operating in a way that is restorative to the planet and creates a climate fit for life.



Carbon Neutral Floors™

The flooring products that we sell, including vinyl sheet, are carbon neutral across their full product life cycle through our third party verified Carbon Neutral Floors™ program. Learn more at interface.com/carbonneutral



Environmental Product Declaration (EPD)



GREENGUARD Gold



Health Product Declaration (HPD)



Coordinating Heat Weld Colorline



1123363



1123364



1123365



1123366



1123367



1123368



1123369



1123370

Complete your flooring with Heat Welds. Solve the special requirements of your medical facilities by sealing floor joints with weld rod colors that are designed to beautifully coordinate with Interlaced Collection vinyl sheet flooring.

Specifications

Size; Round ~.16" (4 mm)
Roll Length 180 linear feet (54.864 m)



EXIT

11

9

10

8

7

6

5

4

3

2

1



SCHEDULE
3

