

A man with a beard and short dark hair is sitting on a bright red modular sofa. He is wearing a dark blue t-shirt, dark trousers, and dark sneakers with white laces. He has large blue headphones on his head and is holding a yellow and blue video game controller with both hands, looking down at it. The background is a solid red wall. The floor is a light grey, textured material, possibly concrete or a heavy carpet. In the foreground, there are three dark blue rectangular mats or sections of carpet. The overall lighting is bright and even.

Human Nature Collection

HN810
HN820
HN830
HN840
HN850

Interface®

Human Nature™ Collection

It's human nature to be creative. As designers we know that when we follow nature's example, designing spaces that ignite our senses through light, color, texture and detail, we also spark the creative spirit in each of us.

Human Nature Collection was designed as a beautiful foundation for those spaces, made up of five different textures in 25 cm x 1 m planks. Borrowing from natural elements, HN810, HN850 and HN840 placed in sequence blend seamlessly in an organic movement that shows no hint of the corners or edges of the tile. HN820 and HN830 extend the range from very low profile to wildly-full and neutral to colorful.

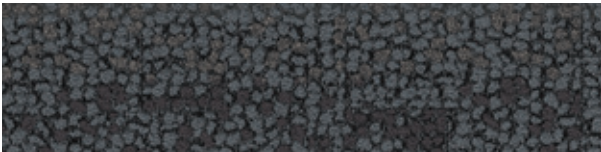
Like everything in the natural world, transitions are varied. The skinny plank format lends itself to fluid transitions with its graceful, elongated dimensions. More dynamic connections are made when mixing hues and textures with the bold geometry of the tile.

Your turn. Be creative – it's in your nature.

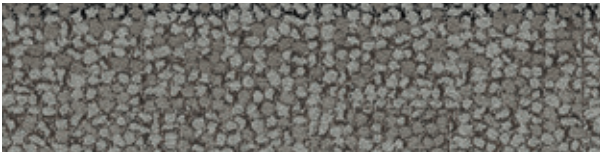




HN840 Color Range



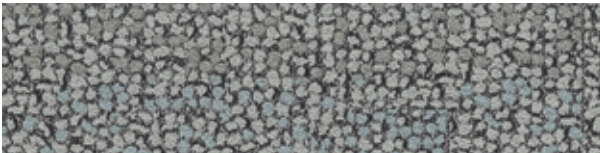
104221 FLINT



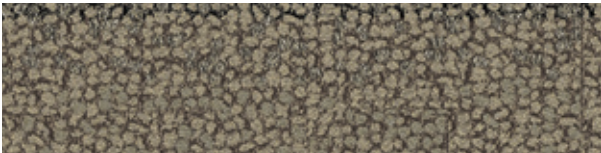
104222 NICKEL



104223 SLATE



104224 LIMESTONE



104225 PUMICE



104226 SHALE



104227 EARTH



104228 TRAVERTINE

Specifications **i2**

Modular, 25 cm x 1 m	12762
Yarn Manufacturer	Aquafil
Yarn System	100% Recycled Content Nylon
Dye Method	100% Solution Dyed
Construction	Engaged Tufted Pattern Loop
Preservative Protection	Intersept®
Soil/Stain Protection	Protekt ⁱ² ™
Pile Thickness	0.2 in, 5.1 mm
Pile Density	5,168 oz/yd ³
Total Recycled Content	71%
Indoor Air Quality	CRI Green Label Plus #GLP0820

[View the full product specification on interface.com](https://www.interface.com)

Installation Methods



ASHLAR

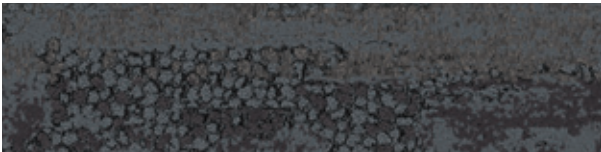


HERRINGBONE



BROWSE IMAGES
ORDER SAMPLES

HN850 Color Range



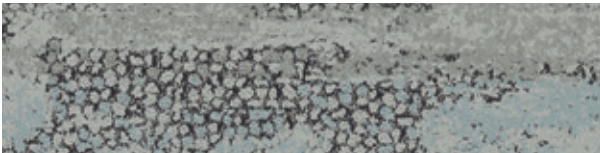
104205 FLINT



104206 NICKEL



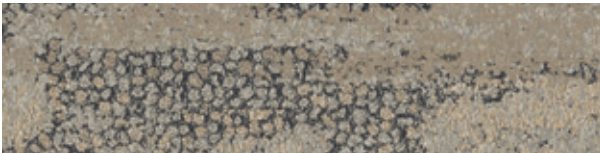
104207 SLATE



104208 LIMESTONE



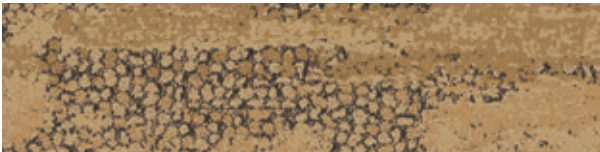
104209 PUMICE



104210 SHALE



104211 EARTH



104212 TRAVERTINE

Specifications **i2**

Modular, 25 cm x 1 m	12760
Yarn Manufacturer	Aquafil
Yarn System	100% Recycled Content Nylon
Dye Method	100% Solution Dyed
Construction	Engaged Tufted Sheared
Preservative Protection	Intersept®
Soil/Stain Protection	Protek12™
Pile Thickness	0.19 in, 4.9 mm
Pile Density	5,938 oz/yd³
Total Recycled Content	72%
Indoor Air Quality	CRI Green Label Plus #GLP0820

View the full product specification on [interface.com](#)

Installation Methods



ASHLAR



HERRINGBONE



BROWSE IMAGES
ORDER SAMPLES



PRODUCT HN850 COLOR SLATE INSTALLED ASHLAR



HN810 Color Range



104213 FLINT



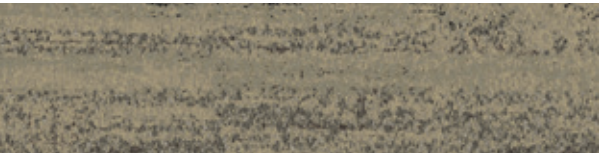
104214 NICKEL



104215 SLATE



104216 LIMESTONE



104217 PUMICE



104218 SHALE



104219 EARTH



104220 TRAVERTINE

Specifications **i2**

Modular, 25 cm x 1 m	12761
Yarn Manufacturer	Aquafil
Yarn System	100% Recycled Content Nylon
Dye Method	100% Solution Dyed
Construction	Engaged Tufted Sheared
Preservative Protection	Intersept®
Soil/Stain Protection	Protekt ⁱ² ™
Pile Thickness	0.21 in, 5.4 mm
Pile Density	5,774 oz/yd³
Total Recycled Content	72%
Indoor Air Quality	CRI Green Label Plus #GLP0820

View the full product specification on [interface.com](https://www.interface.com)

Installation Methods



ASHLAR

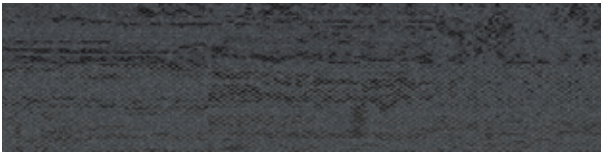


HERRINGBONE



BROWSE IMAGES
ORDER SAMPLES

HN820 Color Range



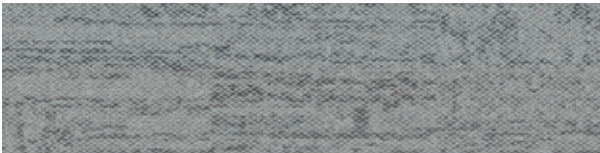
104229 FLINT



104230 NICKEL



104231 SLATE



104232 LIMESTONE



104233 PUMICE



104234 SHALE



104235 EARTH



104236 TRAVERTINE

Specifications **i2**

Modular, 25 cm x 1 m	12498
Yarn Manufacturer	Aquafil
Yarn System	100% Recycled Content Nylon
Dye Method	100% Solution Dyed
Construction	Tufted Cut & Loop
Preservative Protection	Intersept®
Soil/Stain Protection	Protekt ¹² ™
Pile Thickness	0.12 in, 3.1 mm
Pile Density	6,677 oz/yd³
Total Recycled Content	70%
Indoor Air Quality	CRI Green Label Plus #GLP0820

View the full product specification on [interface.com](#)

Installation Methods



ASHLAR



HERRINGBONE



BROWSE IMAGES
ORDER SAMPLES



PRODUCT HN820 COLOR FLINT INSTALLED ASHLAR



HN830 Color Range



104237 PERSIMMON



104238 MAIZE



104239 BLACK



104240 COBALT



104241 CLEMENTINE



104242 KIWI



104243 PISTACHIO



104244 BONE

Specifications

Modular, 25 cm x 1 m	12602
Yarn Manufacturer	Aquafil
Yarn System	100% Recycled Content Nylon
Dye Method	100% Solution Dyed
Construction	Tufted Cut Pile
Preservative Protection	Intersept®
Soil/Stain Protection	Protekt ² ™
Pile Thickness	0.31 in, 7.8 mm
Pile Density	4,893 oz/yd ³
Total Recycled Content	74%
Indoor Air Quality	CRI Green Label Plus #GLP0820

View the full product specification on [interface.com](#)

Installation Methods



ASHLAR



HERRINGBONE

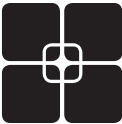


BROWSE IMAGES
ORDER SAMPLES

Why Our Modular Flooring?



i2® Modular Carpet
Minimize waste & save money. Interface's i2® styles have mergeable dye lots. That means i2 tiles from different dye lots always blend with tiles of the same color, even when individual tiles are selectively replaced years later. This minimizes the need for attic stock and saves money. And i2 styles that install non directionally generate an average of only 1.5% installation waste as compared to 3-4% for typical modular carpet and an average of 14% for traditional roll carpet.



TacTiles™
No glue installation. Our revolutionary TacTiles installation system eliminates the need for glue, adhering tiles securely together to form a floor that “floats” for greater flexibility, easier replacement and long-term performance. The result? Less mess, less waste and virtually no VOCs, not to mention an environmental footprint that is over 90% lower than that of traditional glue adhesives. TacTiles are approved for use on GlasBac™, CQuest™GB, CQuest™Bio and CQuest™BioX.



Intersept®
Mold protection. Our proprietary preservative, Intersept, protects our modular carpet against mold growth and odor-causing bacteria—guaranteed. Intersept treated carpet, with proper maintenance, shows no mold or bacterial growth when tested per the ASTM E2471 Standard Test Method. Intersept is EPA approved for safe use in carpet, water insoluble and contains no halogens, heavy metals, phenols or formaldehyde. Intersept is standard in Interface carpet tile products backed with GlasBac, CQuestGB, ReadyBac™ and CushionBac Renew™.



Environmental Product Declaration (EPD)
A statement of product ingredients and environmental impacts over the entire life cycle of a product. A comprehensive life cycle assessment (LCA) is performed to ISO standards to develop an EPD, after which both the EPD and LCA must be third party verified.



Health Product Declaration (HPD)
A transparency tool for evaluating whether a product supports Green Chemistry. As part of our work on Health and Materials, Interface continuously reduces the environmental and health impacts of our products through elimination of materials of concern.



CRI Green Label Plus
An independent testing program that identifies carpet and adhesives with very low emissions of VOCs to help improve indoor air quality.



NSF 140 Sustainable Carpet Assessment
The only carpet sustainability standard in North America that evaluates the environmental impact of carpet for its entire life cycle.



ReEntry™
Recyclable. Through our ReEntry program we reclaim and recycle our carpet tile and Sound Choice™ LVT. ReEntry is the only third party certified recycling system among North American flooring manufacturers.



Sustainability Transparency
Transparency and certified sustainability leadership come standard on Interface products. We enlist outside partners to help us evaluate the entire product life cycle and reduce the environmental and human health impact of our flooring. And, carpet products made in our US facilities are made with 99% renewable energy.

📍 **Samples**

Register and order samples at interface.com. Not near a computer? You can also request samples by calling one of the numbers below.

United States
1.877.605.1500

Canada
1.866.398.3192

interface.com

- Do more on interface.com
- Browse products and order samples
 - Save and share favorites
 - See images of products in a variety of room scenes
 - Browse floor designs, change colors, upload your own image, download and share
 - Get full specifications, sustainability certifications and more
 - Check order status and inventory availability
 - Sign up to get the latest information on Interface products and news

InterCircle Sample Return

Help us close the loop on the carpet sampling process. Through our InterCircle Sample Return program, sample materials stay out of the landfill and are re-used as samples until it is time to recycle them into new carpet. By reducing sample production material and diverting old materials from the landfill, we can reduce our overall environmental footprint.

Call 1.877.605.1500 (U.S.) or 1.866.398.3192 (Canada) to order a sample return bag with a prepaid return label.

We have tried our very best to accurately represent product colors. However, due to the nature of printed materials, color of actual products may vary slightly. Please request a sample to see actual product color.

All product specifications reflect averages derived from product sample testing, are subject to normal manufacturing and testing tolerances and inherent pattern variances, and may be changed without notice. For more information about these and other important attributes of the product(s) described herein, including recycled content and product warranty information, please see interface.com/disclaimer.



Printed on 50% post consumer waste (PCW)
fiber manufactured using wind power.

interface.com

United States Headquarters

1280 West Peachtree Street NW
Atlanta, GA 30309
1.800.634.6032

Canadian Headquarters

233 Lahr Drive
Belleville, ON K8N 5S2
1.800.267.2149 ext. 52128

CIM# IFS00659 02/2025