



# HiFi Collection

---

Mirror Mirror  
Peas in a Pod  
Perfect Pair  
Stunt Double  
Two to Tango

---

**Interface®**



**Plush. Purposeful. Practical.**  
**Experience the elevated versatility of HiFi.**

A successful reproduction bears all the hallmarks of the original—beauty, depth and quality. It takes talent and a mastery of technique to do it right. The same can be said of the techniques required to engineer plush, high-end carpet without the high-end price. But we’ve succeeded with the HiFi Collection.

Both high-performance and high-style, HiFi features a nature-inspired colour palette grounded in rich, earthy, soothing tones across a series of five non directional patterns. Designed to blend seamlessly, HiFi’s patterns include Stunt Double, a mesmerising abstract and Mirror Mirror, a rich textile—as well as three beautifully subtle organic patterns, Perfect Pair, Two to Tango and Peas in a Pod.

Created with exceptional depth and texture, every piece in the HiFi Collection works together, giving you the flexibility to combine patterns, colours and other Interface product lines to curate a sophisticated look in nearly any space. Interface carpet tile has the lowest carbon footprint in the industry—before any offsets. And like all Interface products, the HiFi Collection is third-party verified carbon neutral across the full product life cycle through our Carbon Neutral Floors™ program.







PRODUCT PERFECT PAIR COLOURS ETCHING & SILKSCREEN INSTALLED NON DIRECTIONAL





PRODUCT TWO TO TANGO COLOURS SILKSCREEN & WOODBLOCK INSTALLED MONOLITHIC



PRODUCT TWO TO TANGO COLOURS MONOTYPE, OCHRE & VELLUM INSTALLED NON DIRECTIONAL









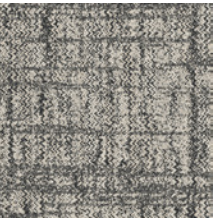
CARPET PRODUCT STUNT DOUBLE, COLOUR MONOTYPE, INSTALLED NON DIRECTIONAL  
LVT PRODUCT LEVEL SET TEXTURED WOODGRAINS, COLOUR ANTIQUE OAK, INSTALLED ASHLAR



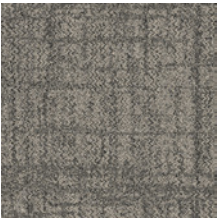


PRODUCT MIRROR MIRROR COLOURS ETCHING & MIDTONE INSTALLED MONOLITHIC

## Mirror Mirror Colour Range



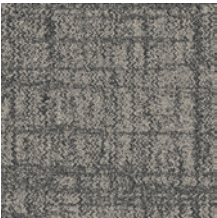
9853001 MONOTYPE



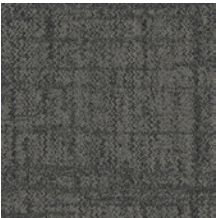
9853002 SILKSCREEN



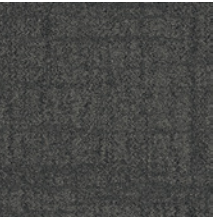
9853003 VELLUM



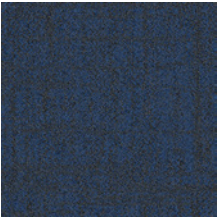
9853008 DUOTONE



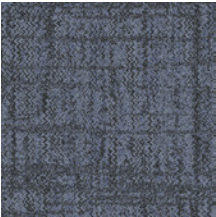
9853009 ETCHING



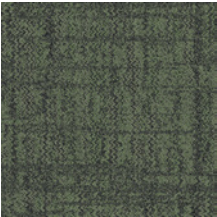
9853010 GRAYSCALE



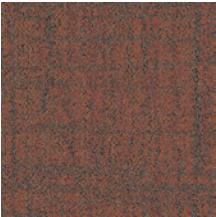
9853100 WATERMARK



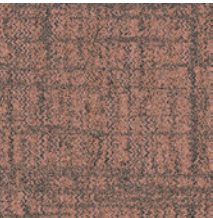
9853101 MIDTONE



9853102 WOODBLOCK



9853103 OCHRE



9853104 VIGNETTE



9853105 GOLD FOIL

## Specification

Style Code	9853
Product Construction	Tufted Structured Loop Pile
Yarn System	100% Recycled Solution Dyed Nylon
Machine Gauge	1/10th
Pile Thickness	4.2 ± 0.5mm
Total Thickness	7.3 ± 0.5mm
Tile Size	50 x 50cm
ACCS (Australia only)	Commercial Extra Heavy Duty & Stairs
Lifetime Antimicrobial	Protekt®
Soil / Stain Protection	Intersept®

View the full product specification on [interface.com](https://www.interface.com)

## Installation Methods



ASHLAR



BRICK



MONOLITHIC



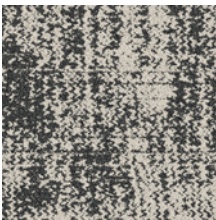
NON DIRECTIONAL



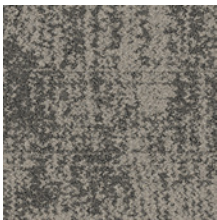
QUARTER-TURN



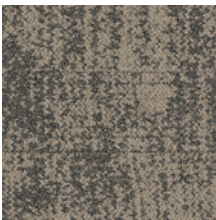
Perfect Pair Colour Range



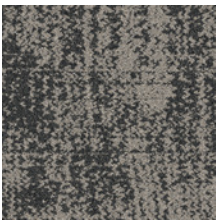
9849001 MONOTYPE



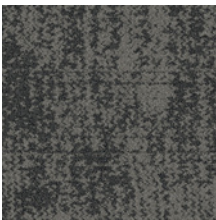
9849002 SILKSCREEN



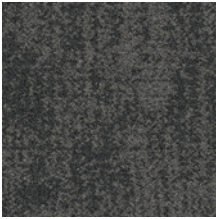
9849003 VELLUM



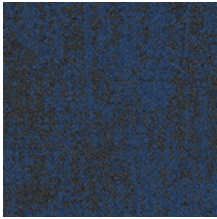
9849008 DUOTONE



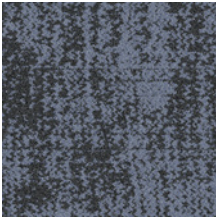
9849009 ETCHING



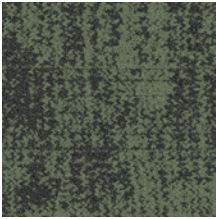
9849010 GRAYSCALE



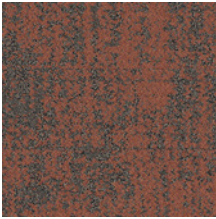
9849100 WATERMARK



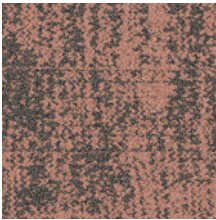
9849101 MIDTONE



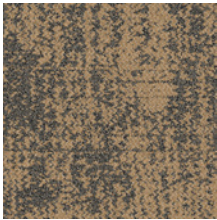
9849102 WOODBLOCK



9849103 OCHRE



9849104 VIGNETTE



9849105 GOLD FOIL

Specification

Style Code	9849
Product Construction	Tufted Structured Loop Pile
Yarn System	100% Recycled Solution Dyed Nylon
Machine Gauge	1/10th
Pile Thickness	4.3 ± 0.5mm
Total Thickness	7.3 ± 0.5mm
Tile Size	50 x 50cm
ACCS (Australia only)	Commercial Extra Heavy Duty & Stairs
Lifetime Antimicrobial	Protekt®
Soil / Stain Protection	Intersept®

View the full product specification on [interface.com](https://www.interface.com)

Installation Methods



NON DIRECTIONAL



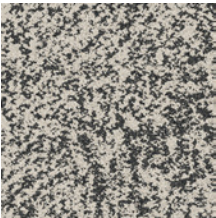
PRODUCT PERFECT PAIR COLOURS GRAYSCALE & WATERMARK INSTALLED NON DIRECTIONAL



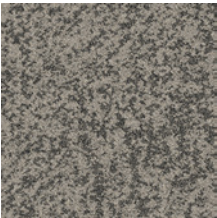


**PRODUCT** PEAS IN A POD **COLOURS** VELLUM, ETCHING **INSTALLED** NON DIRECTIONAL

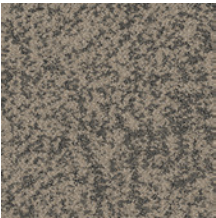
## Peas in a Pod Colour Range



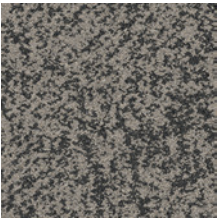
9850001 MONOTYPE



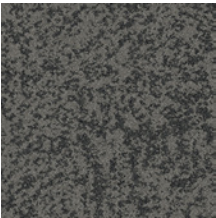
9850002 SILKSCREEN



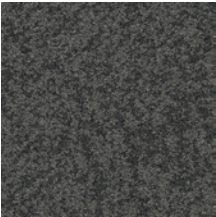
9850003 VELLUM



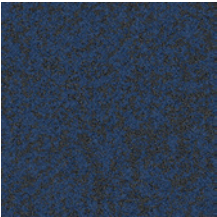
9850008 DUOTONE



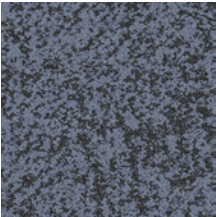
9850009 ETCHING



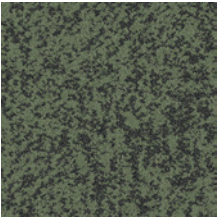
9850010 GRAYSCALE



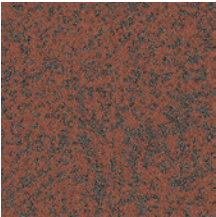
9850100 WATERMARK



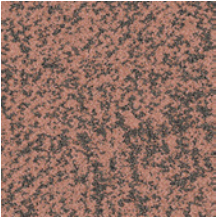
9850101 MIDTONE



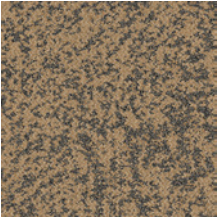
9850102 WOODBLOCK



9850103 OCHRE



9850104 VIGNETTE



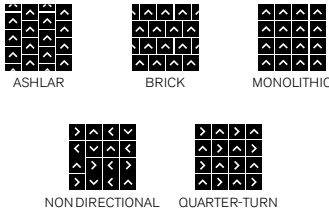
9850105 GOLD FOIL

## Specification

Style Code	9850
Product Construction	Tufted Structured Loop Pile
Yarn System	100% Recycled Solution Dyed Nylon
Machine Gauge	1/10th
Pile Thickness	4.2 ± 0.5mm
Total Thickness	7.3 ± 0.5mm
Tile Size	50 x 50cm
ACCS (Australia only)	Commercial Extra Heavy Duty & Stairs
Lifetime Antimicrobial	Protekt®
Soil / Stain Protection	Intersept®

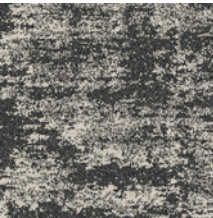
[View the full product specification on interface.com](#)

## Installation Methods





Stunt Double Colour Range



9854001 MONOTYPE



9854002 SILKSCREEN



9854003 VELLUM



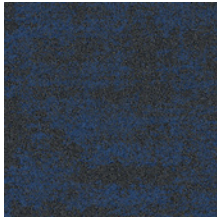
9854008 DUOTONE



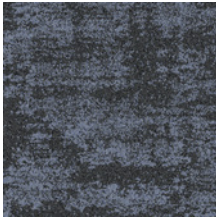
9854009 ETCHING



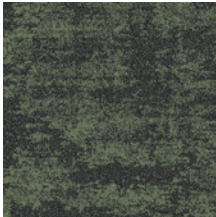
9854010 GRAYSCALE



9854100 WATERMARK



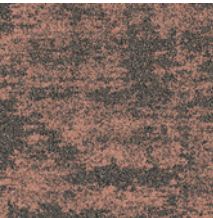
9854101 MIDTONE



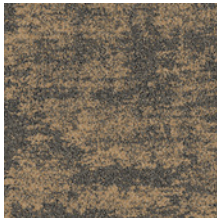
9854102 WOODBLOCK



9854103 OCHRE



9854104 VIGNETTE



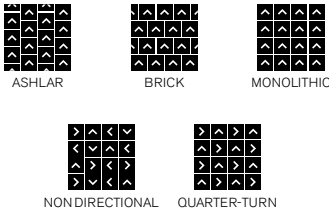
9854105 GOLD FOIL

Specification

Style Code	9854
Product Construction	Tufted Structured Loop Pile
Yarn System	100% Recycled Solution Dyed Nylon
Machine Gauge	1/10th
Pile Thickness	4.4 ± 0.5mm
Total Thickness	7.5 ± 0.5mm
Tile Size	50 x 50cm
ACCS (Australia only)	Commercial Extra Heavy Duty & Stairs
Lifetime Antimicrobial	Protekt®
Soil / Stain Protection	Intersept®

View the full product specification on [interface.com](#)

Installation Methods



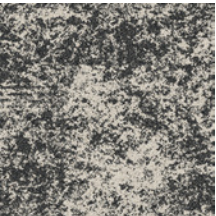
PRODUCT STUNT DOUBLE COLOURS DUOTONE & OCHRE INSTALLED MONOLITHIC



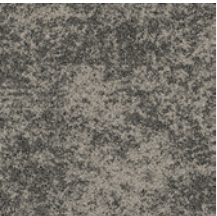




## Two to Tango Colour Range



9851001 MONOTYPE



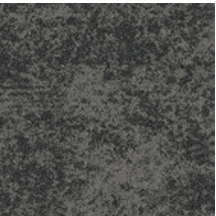
9851002 SILKSCREEN



9851003 VELLUM



9851008 DUOTONE



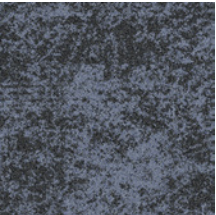
9851009 ETCHING



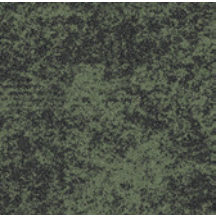
9851010 GRAYSCALE



9851100 WATERMARK



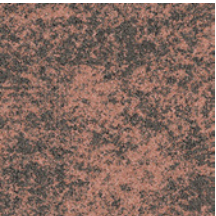
9851101 MIDTONE



9851102 WOODBLOCK



9851103 OCHRE



9851104 VIGNETTE



9851105 GOLD FOIL

## Specification

Style Code	9851
Product Construction	Tufted Structured Loop Pile
Yarn System	100% Recycled Solution Dyed Nylon
Machine Gauge	1/10th
Pile Thickness	3.9 ± 0.5mm
Total Thickness	7 ± 0.5mm
Tile Size	50 x 50cm
ACCS (Australia only)	Commercial Extra Heavy Duty & Stairs
Lifetime Antimicrobial	Protekt®
Soil / Stain Protection	Intersept®

[View the full product specification on interface.com](#)

## Installation Methods



ASHLAR



BRICK



MONOLITHIC



NON DIRECTIONAL



QUARTER-TURN

**PRODUCT** TWO TO TANGO **COLOURS** GRAYSCALE, ETCHING & DUOTONE **INSTALLED** NON DIRECTIONAL



## Why Our Modular Flooring?



**Modular Flooring**  
*Performance and flexibility.* Interface's standard backing systems set the industry standard for modular performance. Tiles stay on the floor with no upcurl, no tapping and no rippling effect, yet are easy to selectively replace. Our modular carpet is easier to handle than bulky roll carpet and produces an average of just 2-5% waste compared to roll carpet's average of 15%. And it installs seamlessly with our LVT, no transition strips needed.



**Carbon Neutral Floors™**  
*Create a climate fit for life.* All Interface flooring sold globally is third party verified carbon neutral across the entire product lifecycle. We've taken a holistic approach to achieve carbon neutrality, first through reducing the carbon footprint of our products and then using carbon offsets for the remainder, including the emissions from raw materials, our manufacturing processes and product use to end of life.



**TacTiles®**  
*No glue installation.* Our revolutionary TacTiles installation system eliminates the need for glue, adhering tiles securely together to form a floor that "floats" for greater flexibility, easier replacement and long-term performance. The result? Less mess, less waste and virtually no VOCs, not to mention an environmental footprint that is over 90% lower than that of traditional glue adhesives.



**Intersept®**  
*Mold protection.* Our proprietary preservative, Intersept, protects our modular carpet against mould growth and odour-causing bacteria—guaranteed. Intersept treated carpet, with proper maintenance, shows no mould or bacterial growth when tested as per the ASTM E2471 Standard Test Method. Intersept is EPA-approved for safe use in carpet, water insoluble and contains no halogens, heavy metals, phenols or formaldehyde.



**Protekt®**  
*Stain protection.* The life and performance of your flooring is extended with Protekt, our patented stain resistant coating. Protekt uses advanced technology to provide a lasting barrier against permanent soiling and staining, which simplifies the cleaning process and enhances the longevity of your carpet.



**ReEntry**  
At Interface, an end of life solution of our products is a reality. ReEntry is our innovative programme to reclaim materials used in our product. Taking back our product at end of life is a service we provide our customers to ensure that none of the products they use will end up in landfill. Whether it is recycling into new product or re-purposing, we see our customer's waste as an opportunity for new product life.



**15-Year Warranty**  
Interface products are warranted for 15 years against excessive surface wear, edge ravel, backing separation, shrinking, stretching and static electricty even under castor chair conditions.



**Manufactured in Australia**  
Offering local responsiveness and a global experience. We are embedded within the same communities as our customers to help us build relationships that are collaborative, committed and productive. We manufacture carpet tile out of South West Sydney, NSW from beginning to end, including inspection, boxing and shipment. You can be proud of contributing to our local economies and environment.

## Third Party Certifications

Our EPDs and certifications contribute credits towards Green Building Council's Green Star® rating system.

Green Star credits are approved by the Green Building Councils of Australia and New Zealand. The internationally-recognised Green Star rating system provides independent verification that a building or community project is sustainable. Developed by the Green Building Council of Australia, Green Star is Australia's only national, voluntary, sustainability rating system for buildings and communities.



**Environmental Product Declaration (EPD) –**  
The Environmental Product Declaration (EPD) is a third party verified environmental certification classified as Type III that quantifies and verifies the lifecycle impacts of products and goods according to the International Standards Organization (ISO) 14025, 14040, 14044 and EN 15804. EPDs help customers that are environmentally driven to evaluate the performance of a product and to make the best decision when choosing a product. All Interface products have EPDs.



**Global GreenTag GreenRate Level A –** Global GreenTag's GreenRate certification is a product rating system recognised by the Green Building Council of Australia, New Zealand and South Africa. It has been set up to meet the criteria of the Green Star® "Sustainable Products" credits. All Interface products are certified "Level A".



**Environmental Certification Scheme Level 4 –** ECS-certified carpet manufacturers must adhere to a code of practice that details performance standards for raw materials, manufacturing, in-service use and end-of-life treatment. Interface flooring holds the highest grading under ECS.



**Best Practice Guidelines for PVC –** A comprehensive standard for better PVC developed by the Green Building Council of Australia under its Green Star programme. Interface holds Lloyd's Statement of Compliance (Green Building Council of Australia Best Practice Guidelines 2013) for Best Practice PVC for all products made in Australia.

All Interface manufacturing facilities in the Asia Pacific region maintain registration to ISO 9001 Quality Management Systems and ISO 14001 Environmental Management Systems.

Production specifications are subject to normal manufacturing tolerances and may be changed without notice. Slight variation in colour among different production lots are normal and should be considered in the overall installation plan. Products covered by manufacturer's written warranty only. All other warranties, including without limitation any implied warranties of merchantability or fitness for particular purpose, are hereby disclaimed. Contact your representative for written warranty information.





**Carbon Neutral Floors™**

**[www.interface.com](http://www.interface.com)**

**Australia**

Interface Australia  
local toll free: 1800 804 361

**India**

Interface India  
tel: +91 80 4613 1313

**South East Asia**

Interface Asia  
tel: +65 6478 1510

**South Korea**

Interface South Korea  
tel: +82 2 555 1734

**Japan**

Interface Japan  
tel: +81 3 5733 5211

**Beijing**

Interface China  
tel: +86 10 6590 7810

**Hong Kong**

Interface China  
tel: +852 2802 0838

**Shanghai**

Interface China  
tel: +86 21 6340 3868



Climate change is undeniable. And reversible. Our mission is to prove it.  
**Join the #ClimateTakeBack and help create a climate fit for life.**