

Heartbeats Collection



Apple of My Eye
Heart Songs
Heart Strings
Heartthrob
Lighthearted
Puppy Love

Interface

[interface.com](https://www.interface.com)

United States Headquarters
1280 West Peachtree Street NW
Atlanta, GA 30309
1.800.634.6032

Canadian Headquarters
233 Lahr Drive
Belleville, ON K8N 5S2
1.800.267.2149 ext.52128

Brazilian Headquarters
Av. Das Nações Unidas 14261
25 andar, sala 25 - 122, Brooklin Paulista
São Paulo 04578 - 000
Brasil
+ 5511.2196.0900

Latin American Headquarters
Montes Urales # 415 Piso 6
Lomas de Chapultepec
Miguel Hidalgo, CDMX
11000 Mexico
+ 52.55.2791.6812

CIM #IFS00903 03/2022



Climate change is undeniable. And reversible. Our mission is to prove it. Join the #ClimateTakeBack and help create a climate fit for life.

Heartbeats™ Collection

Design That Doesn't Skip a Beat.

Keep your finger on the pulse of great design with our Heartbeats Collection. The warm, neutral colors and textured patterns in this hard-working, budget-friendly collection can help you create a relaxed atmosphere perfect for work and living spaces. As a foundational design tool, flooring is at the heart of your interiors. Make it work for you.

The etched lines and angular gestures of Heartthrob™ make it the star of the show, but the bent lines of Apple of My Eye™ create enough visual interest to be a scene stealer. Heart Strings™ offers an organic, highly textured pattern while Puppy Love™ and Heart Songs™ offer texture and pattern in a smaller scale. Lighthearted™ rounds out the collection with a subtle, indistinct design that makes it a perfect companion.

When you specify flooring from Interface, you're selecting products that are carbon neutral across their full product life cycle through our Carbon Neutral Floors™ program.



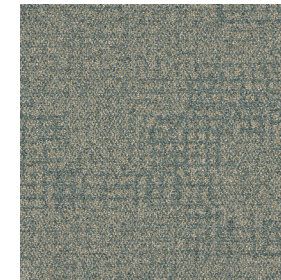




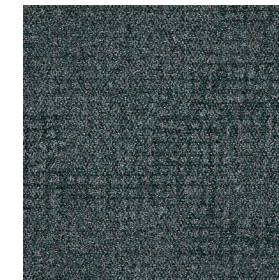
Puppy Love™ Colorline



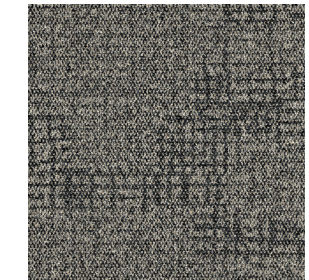
107342 MISTY



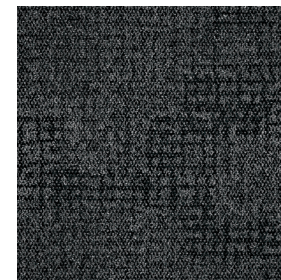
107343 PROSE



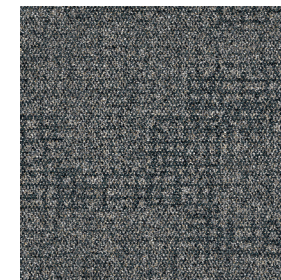
107344 SPIRITED



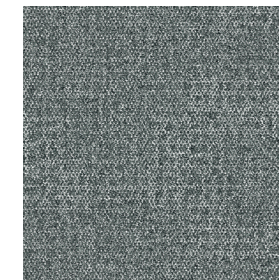
107345 PARAMOUR



107346 ILLUSTRIOUS



107347 VERSE



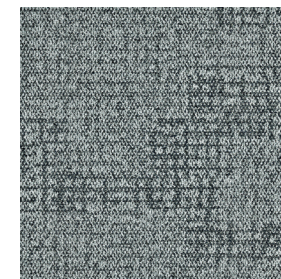
107348 POETRY



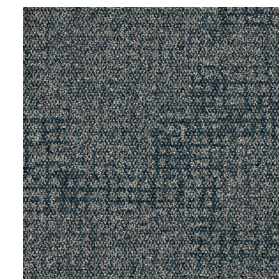
107349 RHAPSODY



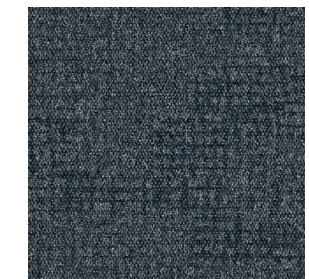
107350 SONNET



107351 AERIE



107352 HAIKU



107353 MYSTERIOUS

Specifications

Modular, 50cm x 50cm	13118
Yarn Manufacturer	Aquafil
Yarn System	100% Recycled Content Nylon
Color System	100% Solution Dyed
Construction	Tufted Textured Loop
Preservative Protection	Intersept®
Soil/Stain Protection	Protek2®
Pile Thickness	0.08 in., 2 mm
Pile Density	8,550 oz/yd
Total Recycled Content	Up to 83%
Indoor Air Quality	CRI Green Label Plus #GLP0820 CDPH 01350

View the full product specification on [interface.com](https://www.interface.com)

Installation Methods

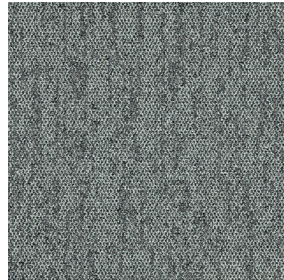


NON DIRECTIONAL

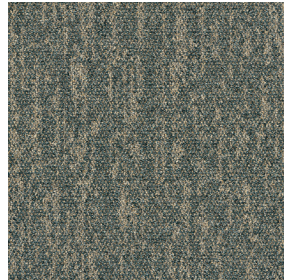


BROWSE IMAGES
ORDER SAMPLES

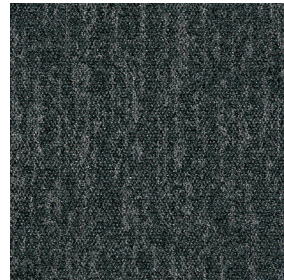
Heart Strings™ Colorline



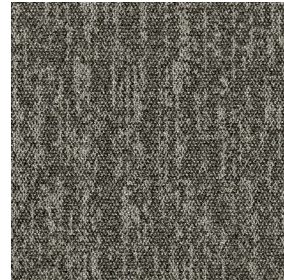
107378 MISTY



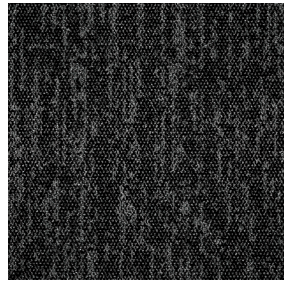
107379 PROSE



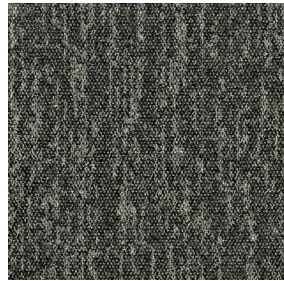
107380 SPIRITED



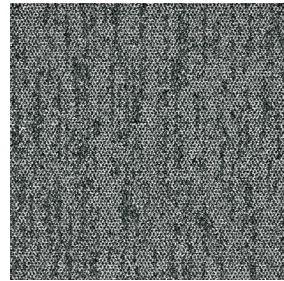
107381 PARAMOUR



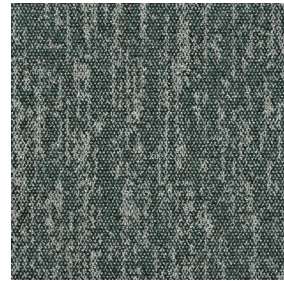
107382 ILLUSTRIOUS



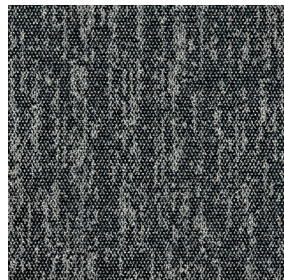
107383 VERSE



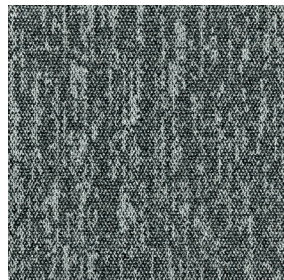
107384 POETRY



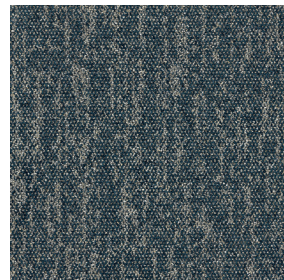
107385 RHAPSODY



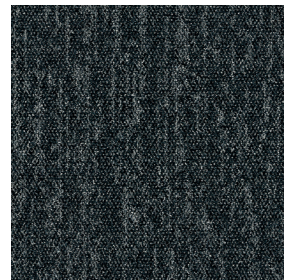
107386 SONNET



107387 AERIE



107388 HAIKU



107389 MYSTERIOUS

Specifications

Modular, 50cm x 50cm	13121
Yarn Manufacturer	Aquafil
Yarn System	100% Recycled Content Nylon
Dye Method	100% Solution Dyed
Construction	Tufted Textured Loop
Preservative Protection	Intersept®
Soil/Stain Protection	Protek2®
Pile Thickness	0.074 in., 1.8 mm
Pile Density	9,730 oz/yd
Total Recycled Content	Up to 83%
Indoor Air Quality	CDPH 01350

Installation Methods



ASHLAR



MONOLITHIC



BROWSE IMAGES
ORDER SAMPLES

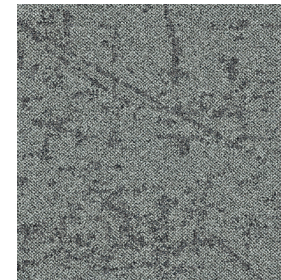
View the full product specification on interface.com



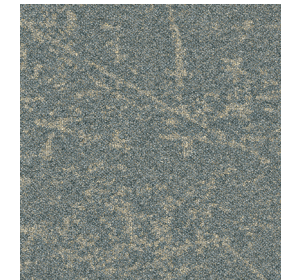
PRODUCT HEART STRINGS™ COLOR 107382 ILLUSTRIOUS, 107387 AERIE INSTALLED MONOLITHIC
PRODUCT KARMIC RELIEF COLOR 107213 CHROMIUM INSTALLED ASHLAR



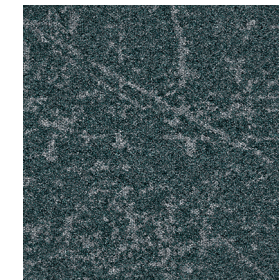
Heartthrob™ Colorline



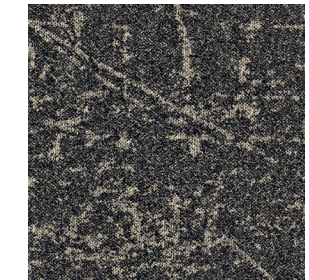
107499 MISTY



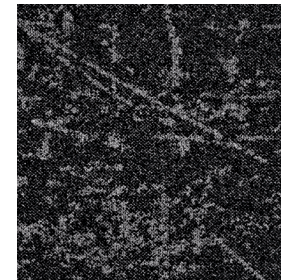
107500 PROSE



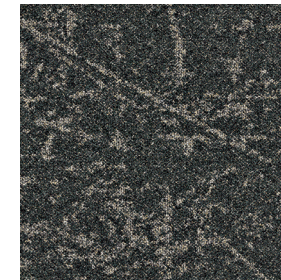
107501 SPIRITED



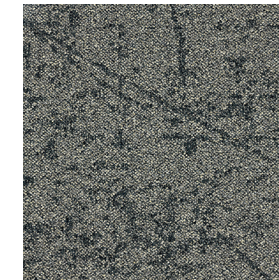
107502 PARAMOUR



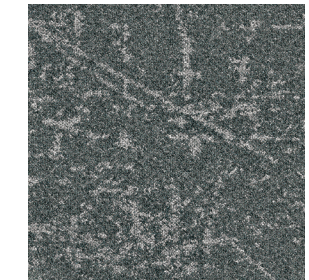
107503 ILLUSTRIOUS



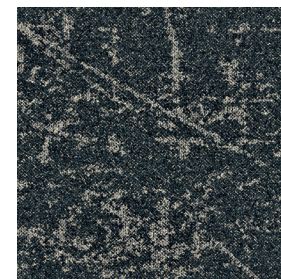
107504 VERSE



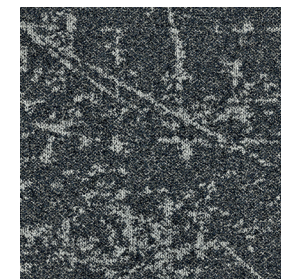
107505 POETRY



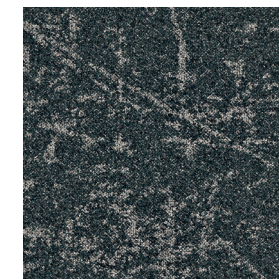
107506 RHAPSODY



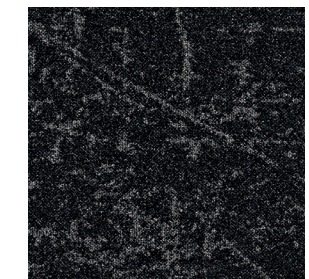
107507 SONNET



107508 AERIE



107509 HAIKU



107510 MYSTERIOUS

Specifications **i2**

Modular, 50cm x 50cm	13124
Yarn Manufacturer	Aquafil
Yarn System	100% Recycled Content Nylon
Color System	100% Solution Dyed
Construction	Tufted Textured Loop
Preservative Protection	Intersept®
Soil/Stain Protection	Protekt2®
Pile Thickness	0.135 in / 3.4 mm
Pile Density	6,400 oz/yd
Total Recycled Content	Up to 84%
Indoor Air Quality	CRI Green Label Plus #GLP0820 CDPH 01350

View the full product specification on [interface.com](https://www.interface.com)

Installation Methods

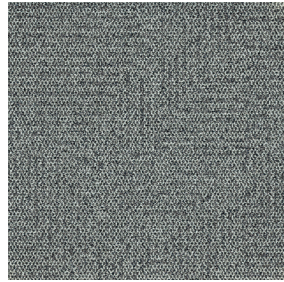


NON DIRECTIONAL

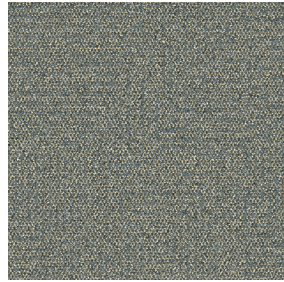


BROWSE IMAGES
ORDER SAMPLES

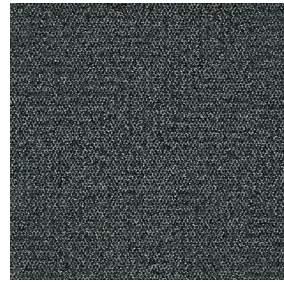
Apple of My Eye™ Colorline



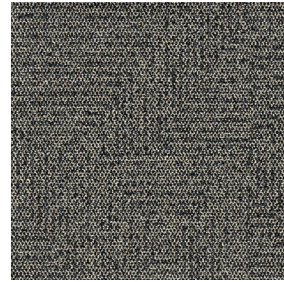
107402 MISTY



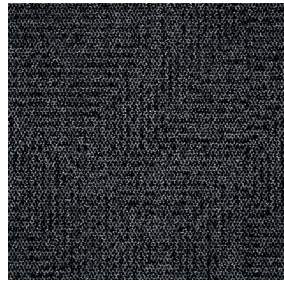
107403 PROSE



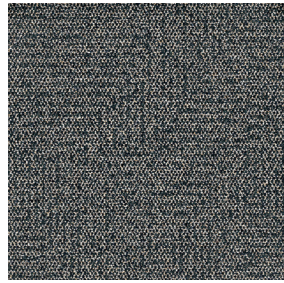
107404 SPIRITED



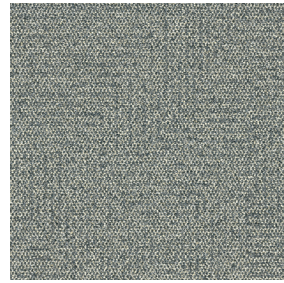
107405 PARAMOUR



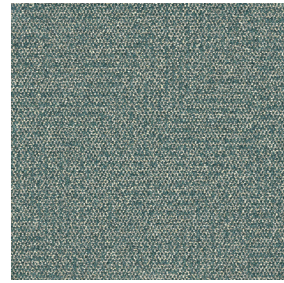
107406 ILLUSTRIOUS



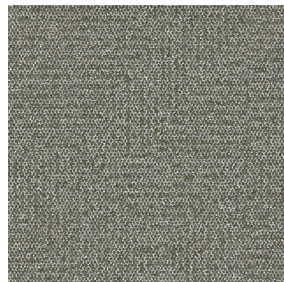
107407 VERSE



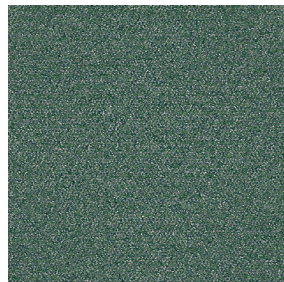
107408 MOONSTRUCK



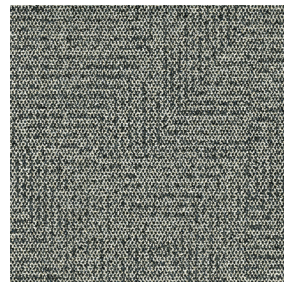
107409 ILLUMINATION



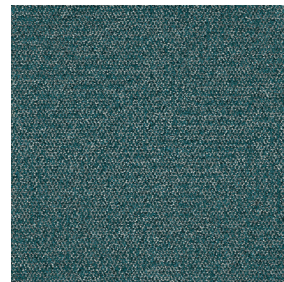
107410 SOULFUL



107411 VERDANT



107412 ENDURANCE



107413 MAJESTIC

Specifications

Modular, 50cm x 50cm	13123
Yarn Manufacturer	Aquafil
Yarn System	100% Recycled Content Nylon
Dye Method	100% Solution Dyed
Construction	Tufted Textured Loop
Preservative Protection	Intersept®
Soil/Stain Protection	Protek ² ®
Pile Thickness	0.083 in., 2.1 mm
Pile Density	8,675 oz./yd ³
Total Recycled Content	Up to 83%
Indoor Air Quality	CRI Green Label Plus #GLP0820 CDPH 01350

View the full product specification on [interface.com](https://www.interface.com)

Installation Methods



NON DIRECTIONAL



BROWSE IMAGES
ORDER SAMPLES



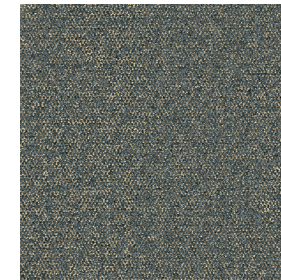
PRODUCT APPLE OF MY EYE **COLOR** 107413 MAJESTIC **INSTALLED** NON DIRECTIONAL
PRODUCT BRUSHED LINES **COLOR** A01604 GALENA **INSTALLED** ASHLAR



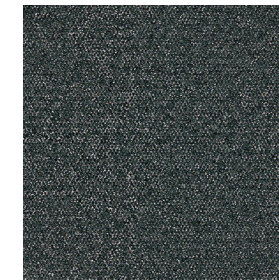
Lighthearted™ Colorline



107390 MISTY



107391 PROSE



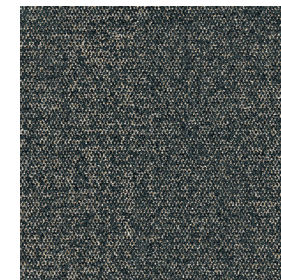
107392 SPIRITED



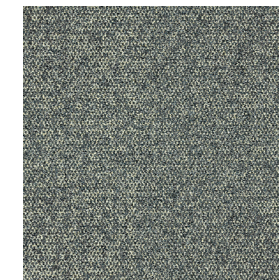
107393 PARAMOUR



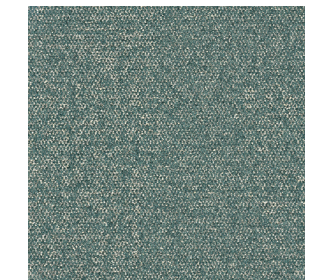
107394 ILLUSTRIOUS



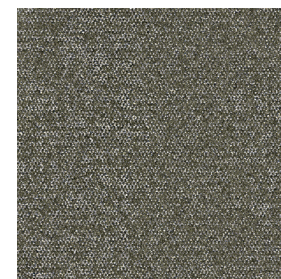
107395 VERSE



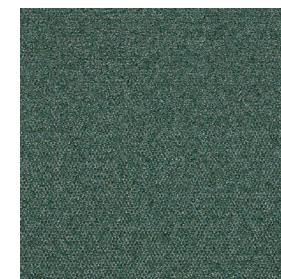
107396 MOONSTRUCK



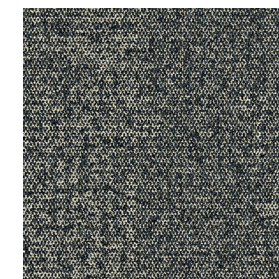
107397 ILLUMINATION



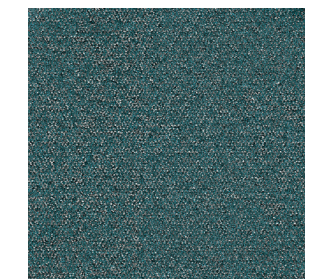
107398 SOULFUL



107399 VERDANT



107400 ENDURANCE



107401 MAJESTIC

Specifications

Modular, 50cm x 50cm	13122
Yarn Manufacturer	Aquafil
Yarn System	100% Recycled Content Nylon
Dye Method	100% Solution Dyed
Construction	Tufted Textured Loop
Preservative Protection	Intersept®
Soil/Stain Protection	Protekt ² ®
Pile Thickness	0.071 in., 1.8 mm
Pile Density	9,634 oz/yd ³
Total Recycled Content	Up to 83%
Indoor Air Quality	CRI Green Label Plus #GLP0820 CDPH 01350

View the full product specification on [interface.com](https://www.interface.com)

Installation Methods

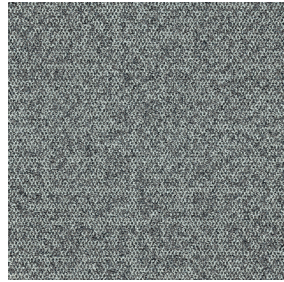


NONDIRECTIONAL

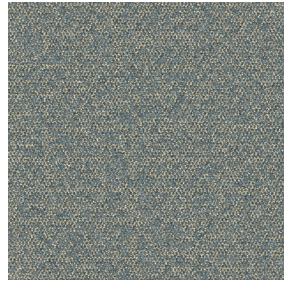


BROWSE IMAGES
ORDER SAMPLES

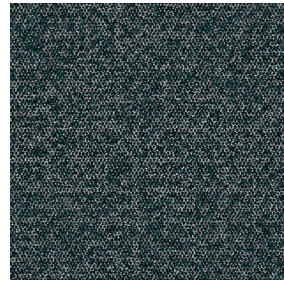
Heart Songs™ Colorline



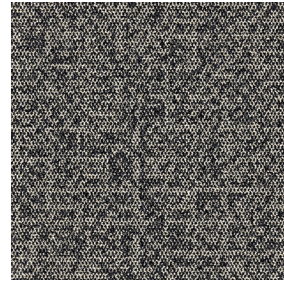
107354 MISTY



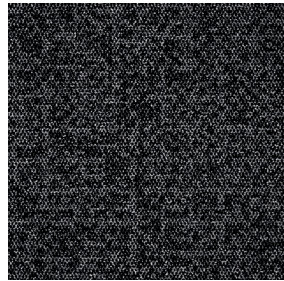
107355 PROSE



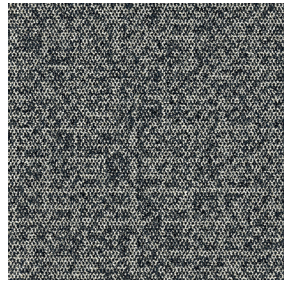
107356 SPIRITED



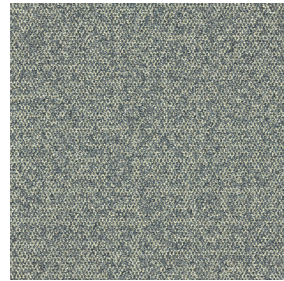
107357 PARAMOUR



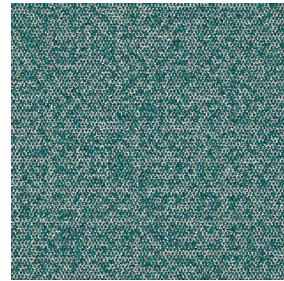
107358 ILLUSTRIOUS



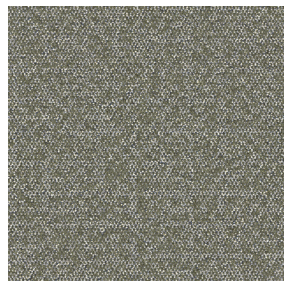
107359 VERSE



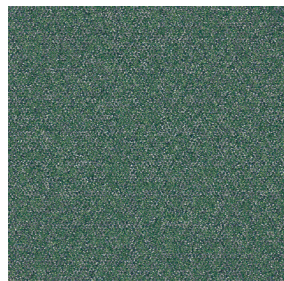
107360 MOONSTRUCK



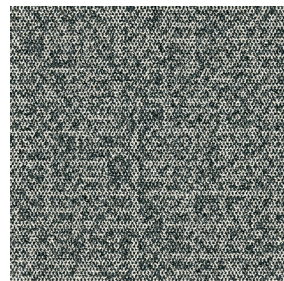
107361 ILLUMINATION



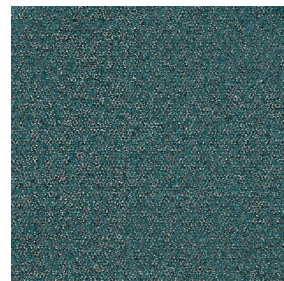
107362 SOULFUL



107363 VERDANT



107364 ENDURANCE



107365 MAJESTIC



Specifications

Modular, 50cm x 50cm	13119
Yarn Manufacturer	Aquafil
Yarn System	100% Recycled Content Nylon
Dye Method	100% Solution Dyed
Construction	Tufted Textured Loop
Preservative Protection	Intersept®
Soil/Stain Protection	Protek ² ®
Pile Thickness	0.082 in., 2.1 mm
Pile Density	8,341 oz/yd ³
Total Recycled Content	Up to 83%
Indoor Air Quality	CRI Green Label Plus #GLP0820 CDPH 01350

View the full product specification on [interface.com](https://www.interface.com)

Installation Methods



NON DIRECTIONAL



BROWSE IMAGES
ORDER SAMPLES

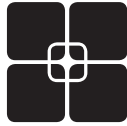
PRODUCT HEART SONGS™ COLOR 107360 MOONSTRUCK, 107363 VERDANT, INSTALLED NON DIRECTIONAL

Why Our Modular Flooring?



i2™ Modular Carpet

Minimize waste & save money. Interface's i2 styles have mergeable dye lots. That means i2 tiles from different dye lots always blend with tiles of the same color, even when individual tiles are selectively replaced years later. This minimizes the need for attic stock and saves money. And i2 styles that install non directionally generate an average of only 1.5% installation waste as compared to 3-4% for typical modular carpet and an average of 14% for traditional roll carpet.



TacTiles™

No glue installation. Our revolutionary TacTiles installation system eliminates the need for glue, adhering tiles securely together to form a floor that “floats” for greater flexibility, easier replacement and long-term performance. The result? Less mess, less waste and virtually no VOCs, not to mention an environmental footprint that is over 90% lower than that of traditional glue adhesives. TacTiles are approved for use on GlasBac™, CQuest™GB, Graphlar™ and Graphlex™.



Intersept®

Mold protection. Our proprietary preservative, Intersept, protects our modular carpet against mold growth and odor-causing bacteria—guaranteed. Intersept treated carpet, with proper maintenance, shows no mold or bacterial growth when tested per the ASTM E2471 Standard Test Method. Intersept is EPA approved for safe use in carpet, water insoluble and contains no halogens, heavy metals, phenols or formaldehyde. Intersept is standard in Interface carpet tile products backed with GlasBac, CQuestGB, ReadyBac™ and CushionBac Renew™.



ReEntry™

Recyclable. Through our ReEntry program, we reclaim all Interface carpet tile. The result? Carpet tile products with up to 85% total recycled content, including as much as 25% post-consumer content.



Sustainability Transparency

Transparency and certified sustainability leadership come standard on Interface products, including published ingredients in HPDs (Health Product Declarations) and published EPDs (Environmental Product Declarations), which are based on full life cycle assessment (LCA). And, Interface carpet products are certified to the NSF 140 Sustainable Carpet Assessment Standard. Additionally, Interface flooring and recommended adhesives are 3rd party certified for low VOC emissions in compliance with California Department of Public Health (CDPH) Standard Method v1.2–2017. Carpet products made in our US facilities are made with 99% renewable energy.



Third Party Verification

The flooring products that we sell, including carpet tile, are carbon neutral across their full product life cycle through our third party verified Carbon Neutral Floors™ program. To find out more, visit interface.com/carbonneutral



Environmental Product Declaration (EPD) –

A statement of product ingredients and environmental impacts over the entire life cycle of a product. A comprehensive life cycle assessment (LCA) is performed to ISO standards to develop an EPD, after which both the EPD and LCA must be third party verified.



Sustainable Assessment for Carpet – The

only carpet sustainability standard in North America that evaluates the environmental impact of carpet for its entire lifecycle.



CRI Green Label Plus – An independent testing program that identifies carpet and adhesives with very low emissions of VOCs to help improve indoor air quality.

Samples

Order samples at interface.com. You'll receive email order confirmations, 24/7 access to order status and more. Not near a computer? You can also request samples by calling one of the numbers below.

United States 1.877.605.1500
Canada 1.866.398.3192

Brazil + 5511.2196.0900
Latin America + 52.55.2791.6812

interface.com

Register at interface.com to:

- Browse products and order samples
- View carpet in a variety of room scenes
- Browse floor designs, change colors, view as a grid or in a room, download and share
- Check order status and inventory availability
- Sign up to get the latest information on Interface products and news

InterCircle Sample Return

Help us close the loop on the carpet sampling process. Through our InterCircle Sample Return program, sample materials stay out of the landfill and are re-used as samples until it is time to recycle them into new carpet. By reducing sample production material and diverting old materials from the landfill, we can reduce our overall environmental footprint.

Call 1.877.605.1500 (U.S.) or 1.866.398.3192 (Canada) to order a sample return bag with a prepaid return label.

All product specifications reflect averages derived from product sample testing, are subject to normal manufacturing and testing tolerances and inherent pattern variances, and may be changed without notice. For more information about these and other important attributes of the product(s) described herein, including recycled content and product warranty information, please see interface.com/disclaimer.



RECYCLED
Paper made from recycled material
FSC® C009723



PLEASE RECYCLE

Printed on 50% post consumer waste (PCW) fiber manufactured using wind power.

We have tried our very best to accurately represent product colors. However, due to the nature of printed materials, color of actual products may vary slightly. Please request a sample to see actual product color.