



# Harmonize™ & Ground Waves™

Interface®

## Harmonize™ and Ground Waves™

---

Harmonize and Ground Waves, i2® styles in our clever 25 cm x 1 m skinny plank, combine to create a pitch-perfect look for innovative high-performing spaces that are designed to transform and inspire us.

Harmonize blends just the right notes of color, contrast and texture. Mix shades to explore your own compositions in the skinny plank format. Or, create a more muted environment when one colorway seamlessly covers the floor.

Ground Waves tunes into a more colorful range, with the introduction of two different accent bands to each of the 12 neutrals in this shared palette. The accent bands present in a varied frequency, making each tile seem unique. Add Harmonize to your Ground Waves installation and tap into an entirely new set of possibilities.













Product Harmonize **Colors** Cobalt/ Gull  
Product Ground Waves **Colors** Cobalt/ Colors/ Gull/ Colors  
Installed Pattern by Tile





Product Harmonize Color Gulf Installed Ashlar



Harmonize™ Colorline

---



7568-001-000 Cobalt



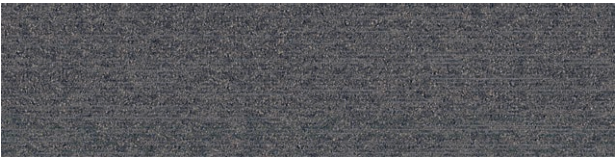
7568-002-000 Midnight



7568-004-000 Iron



7568-005-000 Gravel



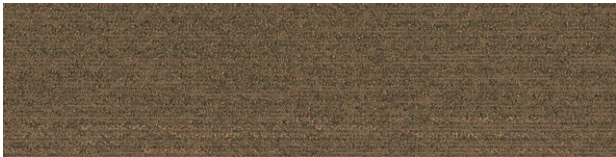
7568-007-000 Laurel



7568-009-000 Gull



7568-010-000 Driftwood



7568-011-000 Prairie



7568-012-000 Flax

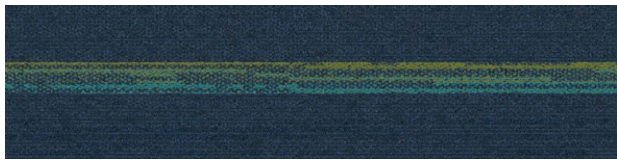




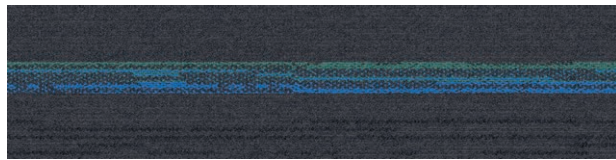


## Ground Waves™ Colorline

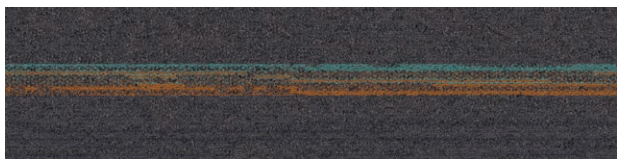
---



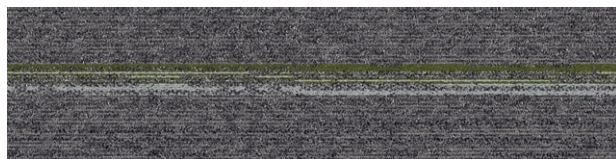
7570-001-000 Cobalt/Colors



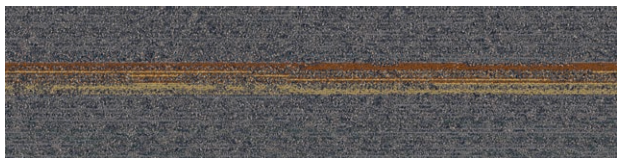
7570-002-000 Midnight/Colors



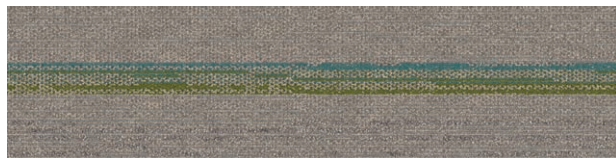
7570-004-000 Iron/Colors



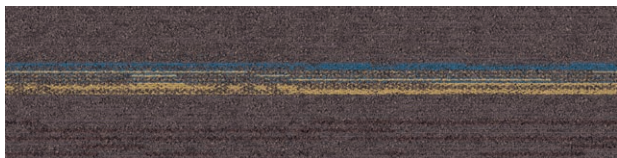
7570-005-000 Gravel/Colors



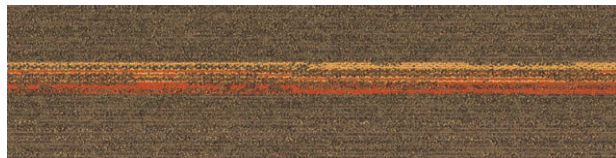
7570-007-000 Laurel/Colors



7570-009-000 Gull/Colors



7570-010-000 Driftwood/Colors



7570-011-000 Prairie/Colors



7570-083-000 Flax/Colors Asia





Product Ground Waves **Color** Driftwood/Colors **Installed** Ashlar



## Specifications



### Harmonize™

Style Code	7568 Pattern 000
Product Definition	Tufted Textured Loop
Yarn/Fibre	100% Recycled Content Type 6 Nylon
Colour System	100% Solution Dyed
Machine Gauge	1/12
Pile Thickness	2.5mm +/- 0.5mm
Total Thickness	6.0mm +/- 0.5mm
Tile Size	25cm x 100cm
Area of Use	Commercial – General use
Lifetime Antimicrobial	Intersept®
Soil/Stain Protection	Protekt <sup>2</sup> ®
Total Recycled Content	GlasBac® 65% to 70% recycled content GlasBac®RE 80% to 85% recycled content
Installation Methods	Ashlar, Brick, Herringbone



Ashlar



Brick



Herringbone

### Ground Waves™

Style Code	7570 Pattern 000
Product Definition	Tufted Textured Loop
Yarn/Fibre	100% Recycled Content Type 6 Nylon
Colour System	100% Solution Dyed
Machine Gauge	1/12
Pile Thickness	2.5mm +/- 0.5mm
Total Thickness	6.0mm +/- 0.5mm
Tile Size	25cm x 100cm
Area of Use	Commercial – General use
Lifetime Antimicrobial	Intersept®
Soil/Stain Protection	Protekt <sup>2</sup> ®
Total Recycled Content	GlasBac® 65% to 70% recycled content GlasBac®RE 80% to 85% recycled content
Installation Methods	Ashlar, Brick, Herringbone



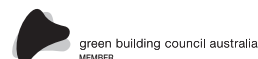
Ashlar



Brick



Herringbone



**CoolCarpet™**  
**Intersept®**

Production specifications are subject to normal manufacturing tolerances and may be changed without notice. Slight variation in colour among different production lots are normal and should be considered in the overall installation plan. Products covered by manufacturer's written warranty only. All other warranties, including without limitation any implied warranties of merchantability or fitness for particular purpose, are hereby disclaimed. Contact your representative for written warranty information. Recycled content calculations are based on historical averages by total weight of the product for backings. Yarn/Fibre recycled content calculation excludes backing. We update our recycled content information and other environmental data regularly to reflect changes and advancements in our technology.

\*Cool Carpet is not a standard option in Australia and New Zealand.



