

Grasmere



Interface®

Grasmere™

Grasmere is the strong, silent type. The fine-combed texture sends a subdued shading across the floor yet feels confident and substantial in the bold scale of our 50cm x 1m broad planks. So attractive and with such good manners - Grasmere will easily find its place in a variety of interior spaces. Just the right amount of restraint means you can count on this unique pattern to stand alone or as companion to support more dynamic designs.



CARPET PRODUCT GRASMERE COLOR 102861 FELL INSTALLED PATTERN BY TILE
LVT PRODUCT LEVEL SET™ | NATURAL WOODGRAINS COLOR A00206 STORM INSTALLED ASHLAR





PRODUCT GRASMERE COLOR 102852 LIMESTONE INSTALLED PATTERN BY TILE

Grasmere™ Colorline



102844 CRAG



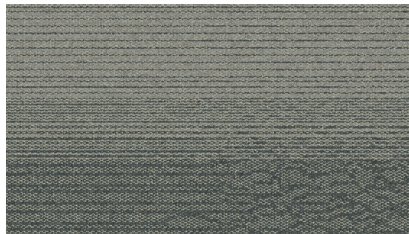
102845 BEDROCK



102846 QUARRY



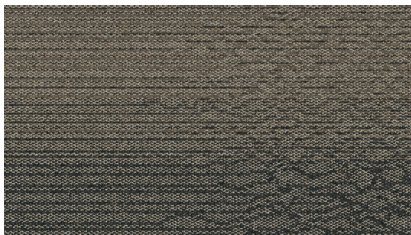
102847 SYCAMORE



102848 SLATE



102849 GLACIER



102850 BRACKEN



102851 FELL



102852 LIMESTONE

Specifications

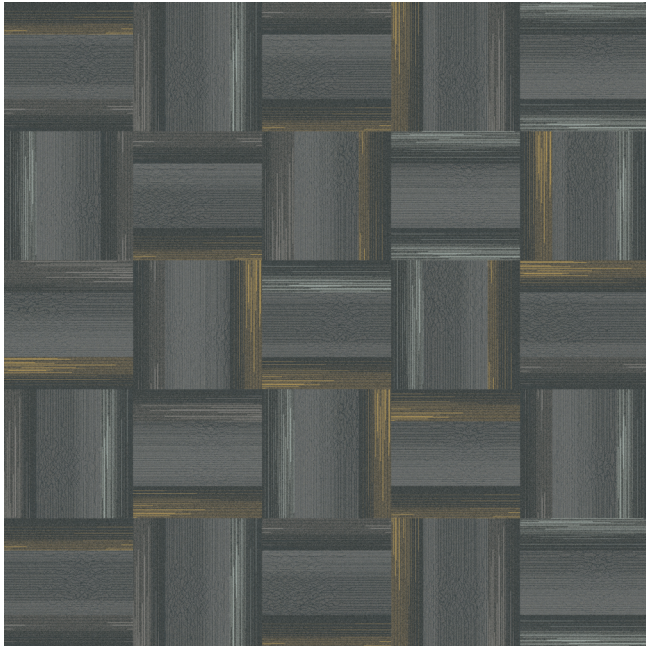
Modular, 50cm x 1m	138440AB00
Modular, 50cm x 50cm	1384402500
Backing System	GlasBac® Tile
Yarn Manufacturer	Aquafil
Yarn System	100% Recycled Content Type 6 Nylon
Color System	100% Solution Dyed
Construction	Tufted Textured Loop
Lifetime Antimicrobial	Intersept®
Soil/Stain Protection	Protekt2®
Pile Thickness	0.096 in., 2.4 mm
Pile Density	6,750
Total Recycled Content	71%
Indoor Air Quality	CRI Green Label Plus# GLP0820



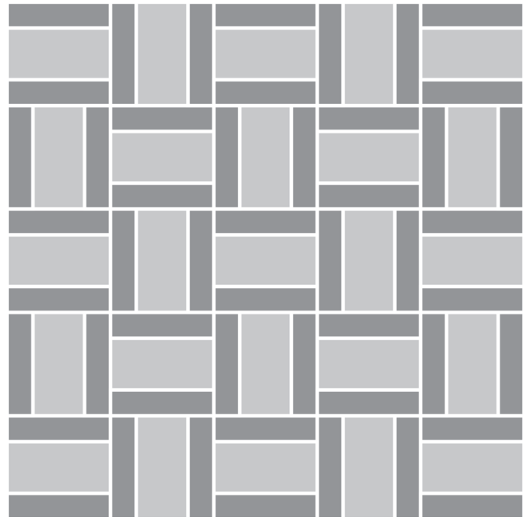


PRODUCT GRASMERE COLOR 102845 BEDROCK INSTALLED HERRINGBONE

Design Ideas Below are floor layouts showing how to create simple design ideas using any of our Grasmere options.

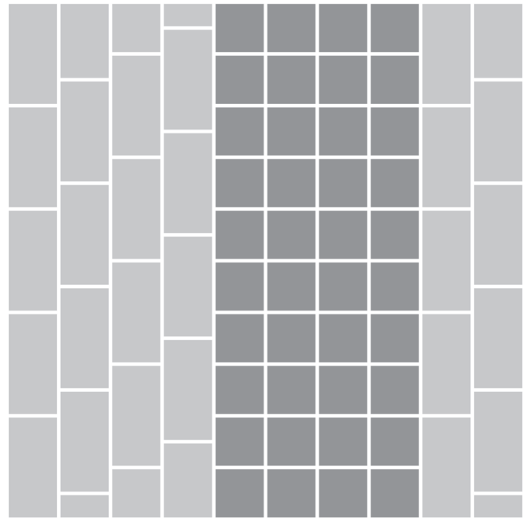
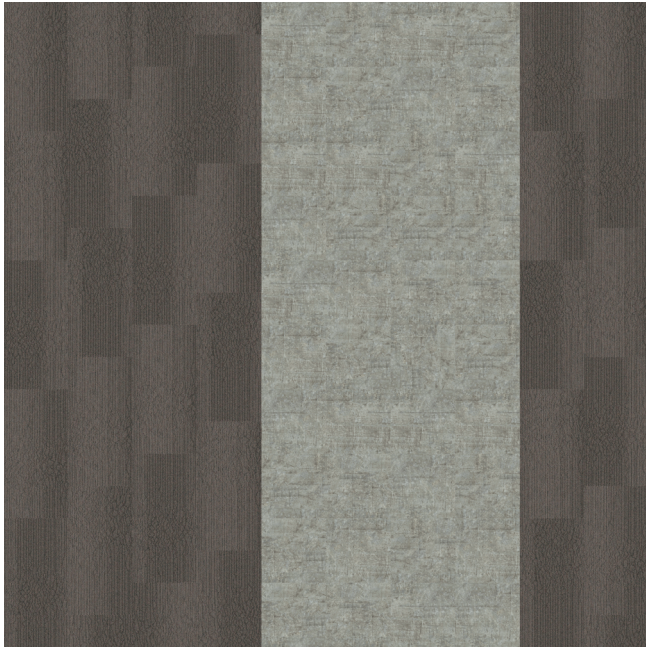


PRODUCT SL930 **COLOR** 104524 CHARCOAL FADE
PRODUCT GRASMERE **COLOR** 102846 QUARRY **INSTALLED** PATTERN BY TILE

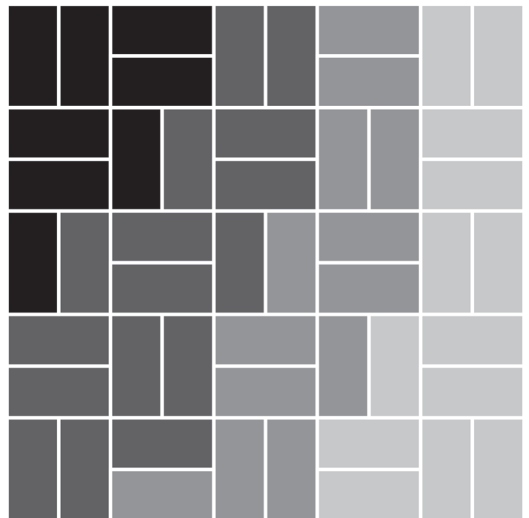


PRODUCT SHIVER ME TIMBERS **COLOR** 103925 MAPLE
PRODUCT GRASMERE **COLOR** 102852 LIMESTONE **INSTALLED** PATTERN BY TILE





LVT PRODUCT TEXTURED STONES **COLOR** A00304 EMPERADOR GRAY **INSTALLED** MONOLITHIC
CARPET PRODUCT GRASMERE **COLOR** 102847 SYCAMORE **INSTALLED** ASHLAR



PRODUCT GRASMERE **COLORS** 102844 CRAG, 102845 BEDROCK, 102848 SLATE,
102849 GLACIER **INSTALLED** PATTERN BY TILE

Why Our Modular Flooring?



Modular Flooring

Performance and Flexibility.

Interface's standard backing systems set the industry standard for modular performance. Tiles stay on the floor with no upcurl, no tapping and no rippling effect, yet are easy to selectively replace. Our modular carpet is easier to handle than bulky roll carpet and produces an average of just 3-4% waste compared to roll carpet's average of 14%. And it installs seamlessly with our LVT, no transition strips needed.



Cool Floor™

The Low Carbon Option. Help stop climate change. ALL Interface modular flooring sold in North America is third party verified climate neutral Cool Floor. We start by using low-carbon materials and manufacturing processes, then Cool Floor zeros out all remaining greenhouse gas (GHG) emissions associated with the entire life cycle of your flooring, from raw material extraction through use and recycling.



TacTiles®

No Glue Installation. Our revolutionary TacTiles installation system eliminates the need for glue, adhering tiles securely together to form a floor that "floats" for greater flexibility, easier replacement and long-term performance. The result? Less mess, less waste and virtually no VOCs, not to mention an environmental footprint that is over 90% lower than that of traditional glue adhesives.

Samples

Order samples at www.interface.com. You'll receive email order confirmations, 24/7 access to order status and more. Not near a computer? You can also request samples by calling one of the numbers below.

United States 1.877.605.1500	Canada 1.866.398.3192
Brazil + 55 11 2196 0900	Latin America + 52 55 6395 5100

www.interface.com

Register at www.interface.com to:

- Browse products and order samples
- View carpet in a variety of room scenes
- Browse floor designs, change colors, view as a grid or in a room, download and share
- Use our LEED Calculator
- Check order status and inventory availability
- Sign up to get the latest information on Interface products and news

InterCircle™ Sample Return

Help us close the loop on the carpet sampling process. Through our InterCircle Sample Return program, sample materials stay out of the landfill and are re-used as samples until it is time to recycle them into new carpet. By reducing sample production material and diverting old materials from the landfill, we can reduce our overall environmental footprint.

Call 1.877.605.1500 (U.S.) or 1.866.398.3192 (Canada) to order a sample return bag with a prepaid return label.

Third Party Certification

cool floor™

Cool Floor – Our third party verified carbon offset program zeroes out all greenhouse gas (GHG) emissions associated with the entire life cycle of your flooring.



Environmental Product Declaration (EPD) – A statement of product ingredients and environmental impacts over the entire life cycle of a product. A comprehensive life cycle assessment (LCA) is performed to ISO standards to develop an EPD, after which both the EPD and LCA must be third party verified.



Sustainable Assessment for Carpet – The only carpet sustainability standard in North America that evaluates the environmental impact of carpet for its entire lifecycle.



CRI Green Label Plus – An independent testing program that identifies carpet and adhesives with very low emissions of VOCs to help improve indoor air quality.



Intersept®

Mold Protection. Our proprietary preservative, Intersept, protects our modular carpet against mold growth and odor-causing bacteria — guaranteed. Intersept treated carpet, with proper maintenance, shows no mold or bacterial growth when tested per the ASTM E2471 Standard Test Method. Intersept is EPA approved for safe use in carpet, water insoluble and contains no halogens, heavy metals, phenols or formaldehyde.



ReEntry®

Recyclable is Now a Reality. Through our ReEntry program and partnerships with our fiber suppliers and recycling centers throughout North America, separated Type 6 and 6,6 nylon are recycled into new 6 and 6,6 nylon while separated GlasBac®, GlasBacRE and similar competitor backings are recycled into new GlasBacRE non-virgin PVC backing using our Cool Blue™ technology. The result? Products with up to 89% total recycled content, including as much as 27% post-consumer content.



Sustainable Choice

Environmental Responsibility. More than 95% of Interface products manufactured in the Americas carry the GreenCircle Certified Environmental Facts label, which has verified that standard Interface products are manufactured using 99% renewable energy and offer a minimum of 66% and 80% total recycled content when backed with GlasBac and GlasBacRE backing respectively.

Transparency and certified sustainability leadership come standard on all Interface products, including published ingredients via HPDs (Health Product Declarations) or Declare Labels. In addition, more than 99% of our products globally have a published EPD (Environmental Product Declaration), which evaluates consistent factors based on full life cycle assessment (LCA). And, all Interface products with GlasBacRE backing are certified to the Platinum level of the NSF/ANSI 140 Sustainable Assessment for Carpet. GlasBac backed products meet the Gold level. NSF/ANSI 140 certified products contribute toward a USGBC or CaGBC LEED credit.



PLEASE RECYCLE

Printed on 50% post consumer waste (PCW) fiber manufactured using wind power.

We have tried our very best to accurately represent product colors. However, due to the nature of printed materials, color of actual products may vary slightly. Please request a sample to see actual product color.

All product specifications reflect averages derived from product sample testing, are subject to normal manufacturing and testing tolerances and inherent pattern variances, and may be changed without notice. For more information about these and other important attributes of the product(s) described herein, including recycled content and product warranty information, please see www.interface.com/disclaimer.

www.interface.com

United States Headquarters

1503 Orchard Hill Road
LaGrange, GA 30240
1.800.336.0225 ext.56511

Canadian Headquarters

233 Lahr Drive
Belleville, ON K8N 5S2
1.800.267.2149 ext.52128

Brazilian Headquarters

Rua Surubim, 577 - Conjuntos
73/74 7º Andar
04571-050 - São Paulo - SP
+ 55 11 2196 0900

Latin American Headquarters

Montes Urales # 415 Piso 6
Col. Lomas de Chapultepec
México City, D.F. 11000
Mexico
+ 52 55 6395 5100

08/2017



Mission Zero[®]

our promise to eliminate any
negative impact our company
may have on the environment
by the year 2020.