

[interface.com](https://www.interface.com)

United States Headquarters

1280 West Peachtree Street NW
Atlanta, GA 30309
1.800.634.6032

Canadian Headquarters

233 Lahr Drive
Belleville, ON K8N 5S2
1.800.267.2149 ext.52128

Brazilian Headquarters

Av. Das Nações Unidas 14261
25 andar, sala 25 -122, Brooklin Paulista
São Paulo 04578 - 000
Brasil
+ 55.11.2196.0900

Latin American Headquarters

Montes Urales # 415 Piso 6
Lomas de Chapultepec
Miguel Hidalgo, CDMX
11000 Mexico
+ 52.55.2791.6812

CIM # IFS00902 02/2022



Climate change is undeniable. And reversible. Our mission is to prove it.
Join the #ClimateTakeBack and help create a climate fit for life.

Granite Mountain Collection

Bridge Creek
Flat Rock
Mantle Rock
Mile Rock
Mountain Rock
Panola Mountain
Rock Springs
Rockland Road

Interface®

Granite Mountain™ Collection

Imitation is the greatest form of flattery.

Granite is one of the hardest substances in the world, but even this seemingly immovable force bends to the power of nature—with beautiful results. Likewise, our biophilic-inspired Granite Mountain collection's eight carpet tile designs visually translate this natural balance between strength and beauty.

Rock Springs™, Mantle Rock™ and Rockland Road™ are simpler patterns that gradually increase in texture and plushness, making them ideal for large areas.

Flat Rock™, Mountain Rock™ and Bridge Creek™ transition from field to specialized spaces with heightened textures and more defined patterns that mimic the changes of stone on a mountain.

Visuals peak with the metallic luster of Mile Rock™ and the colorful, vegetation-inspired design of Panola Mountain™. Add FLOR's You're So Vein™ for a perfect, marbled companion.

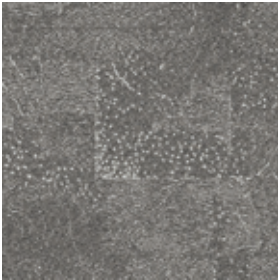
When you specify flooring from Interface, you're selecting products that are carbon neutral across their full product life cycle through our Carbon Neutral Floors™ program.



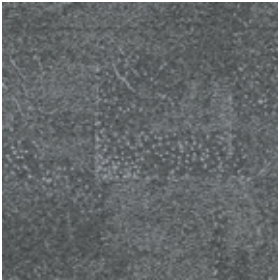




Flat Rock™ Colorline



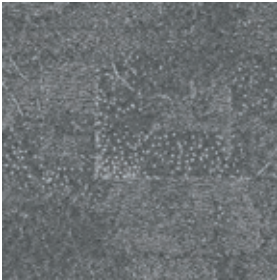
107318 NATURAL TRAIL



107319 MINERAL TRAIL



107320 ONYX TRAIL

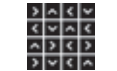


107321 STEEL TRAIL

Specifications

Modular, 50cm x 50cm	150480
Yarn Manufacturer	Aquafil
Yarn System	100% Recycled Content Nylon
Color System	100% Solution Dyed
Construction	Tufted Pattern Loop
Preservative Protection	Intersept®
Soil/Stain Protection	Protekt2®
Pile Thickness	0.061 in, 1.5 mm
Pile Density	14,164 oz/yd³
Total Recycled Content	Up To 84%
Indoor Air Quality	Green Label Plus #GLP0820

Installation Methods



NON DIRECTIONAL

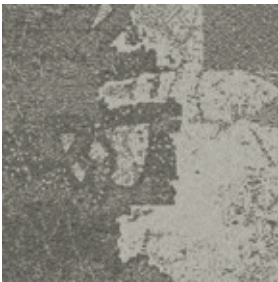


MONOLITHIC

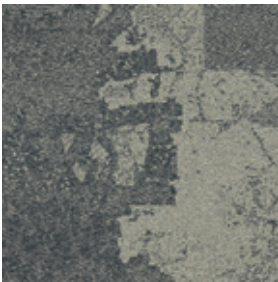


BROWSE IMAGES
ORDER SAMPLES

Bridge Creek™ Colorline



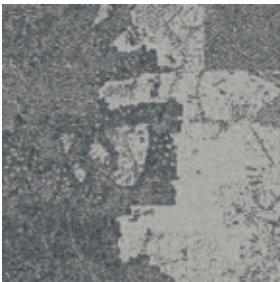
107322 NATURAL EDGE



107323 MINERAL EDGE



107324 ONYX EDGE



107325 STEEL EDGE

Specifications

Modular, 50cm x 50cm	150490
Yarn Manufacturer	Aquafil
Yarn System	100% Recycled Content Nylon
Dye Method	100% Solution Dyed
Construction	Tufted Pattern Loop
Preservative Protection	Intersept®
Soil/Stain Protection	Protekt2®
Pile Thickness	0.105 in, 2.7 mm
Pile Density	8,914 oz/yd³
Total Recycled Content	Up To 84%
Indoor Air Quality	Green Label Plus #GLP0820

Installation Methods



NON DIRECTIONAL



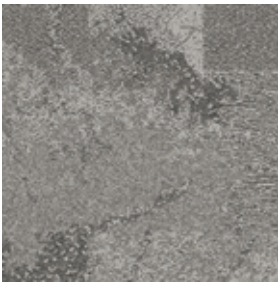
BROWSE IMAGES
ORDER SAMPLES



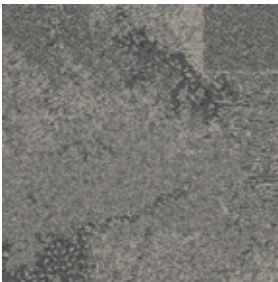
PRODUCT BRIDGE CREEK COLOR 107325 STEEL EDGE INSTALLED PATTERN BY TILE



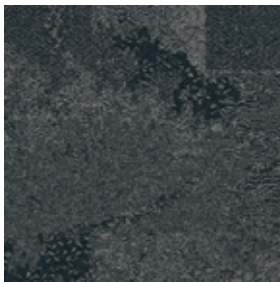
Mountain Rock™ Colorline



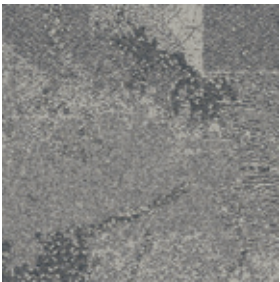
107326 NATURAL PEAK



107327 MINERAL PEAK



107328 ONYX PEAK



107329 STEEL PEAK

Specifications

Modular, 50cm x 50cm	150500
Yarn Manufacturer	Aquafil
Yarn System	100% Recycled Content Nylon
Color System	100% Solution Dyed
Construction	Tufted Pattern Loop
Preservative Protection	Intersept®
Soil/Stain Protection	Protekt2®
Pile Thickness	0.124 in, 3.1 mm
Pile Density	8,710 oz/yd³
Total Recycled Content	Up To 85%
Indoor Air Quality	Green Label Plus #GLP0820

Installation Methods



NON DIRECTIONAL



MONOLITHIC



BROWSE IMAGES
ORDER SAMPLES

Panola Mountain™ Colorline



107298 RUST LICHEN



107299 BLUSH LICHEN



107300 BROWN LICHEN



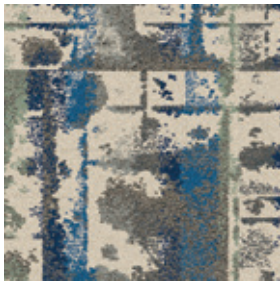
107301 YELLOW LICHEN



107302 GREEN LICHEN



107303 MEADOW LICHEN



107304 BLUE LICHEN



107305 SAGE LICHEN

Specifications

Modular, 50cm x 50cm	125160
Yarn Manufacturer	Aquafil
Yarn System	100% Recycled Content Nylon
Color System	100% Solution Dyed
Construction	Tufted Pattern Loop
Preservative Protection	Intersept®
Soil/Stain Protection	Protekt2®
Pile Thickness	0.234 in, 5.9 mm
Pile Density	5,846 oz/yd³
Total Recycled Content	Up To 86%
Indoor Air Quality	Green Label Plus #GLP0820

Installation Methods



NON DIRECTIONAL



BROWSE IMAGES
ORDER SAMPLES



PRODUCT PANOLA MOUNTAIN - COLORS 107302 GREEN LICHEN, 107305 SAGE LICHEN, 107304 BLUE LICHEN - INSTALLED PATTERN BY TILE



interface.com

PRODUCT FLAT ROCK **COLOR** 107318 NATURAL TRAIL
PRODUCT BRIDGE CREEK **COLOR** 107322 NATURAL EDGE
PRODUCT MOUNTAIN ROCK **COLOR** 107326 NATURAL PEAK
PRODUCT PANOLA MOUNTAIN **COLORS** 107301 YELLOW LICHEN, 107302 GREEN LICHEN
INSTALLED PATTERN BY TILE

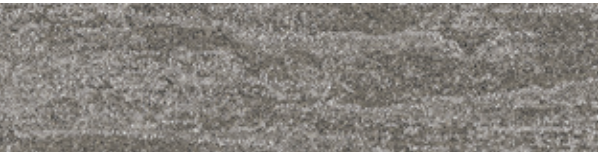


PRODUCT FLAT ROCK **COLOR** 107320 ONYX TRAIL
PRODUCT BRIDGE CREEK **COLOR** 107324 ONYX EDGE
PRODUCT MOUNTAIN ROCK **COLOR** 107328 ONYX PEAK
PRODUCT MILE ROCK **COLOR** 107316 INK MICA **INSTALLED** PATTERN BY TILE





Rock Springs™ Colorline



107290 TAUPE GNEISS



107291 CHARCOAL GNEISS



107292 LEAD GNEISS



107293 IRON GNEISS



107294 NICKEL GNEISS



107295 BLACK GNEISS



107296 GREY GNEISS



107297 SLATE GNEISS

Specifications

Modular, 25cm x 1m	131160
Yarn Manufacturer	Aquafil
Yarn System	100% Recycled Content Nylon
Color System	100% Solution Dyed
Construction	Tufted Textured Loop
Preservative Protection	Intersept®
Soil/Stain Protection	Protekt2®
Pile Thickness	0.109 in, 2.8 mm
Pile Density	5,615 oz/yd³
Total Recycled Content	Up To 83%
Indoor Air Quality	Green Label Plus #GLP0820

Installation Methods



ASHLAR



HERRINGBONE

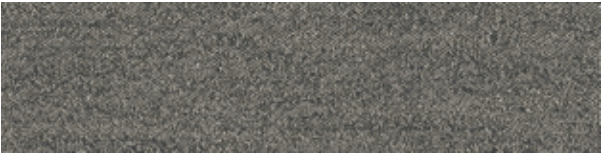


BROWSE IMAGES
ORDER SAMPLES

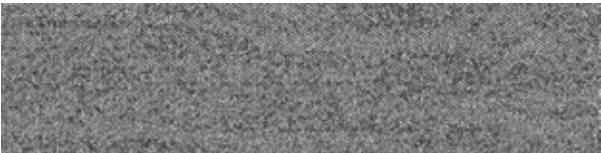
Mantle Rock™ Colorline



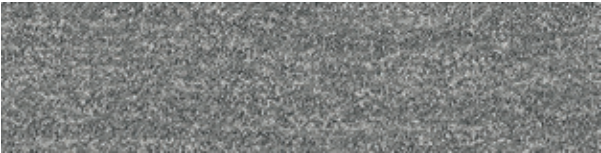
107282 TAUPE STONE



107284 LEAD STONE



107286 NICKEL STONE



107288 GREY STONE



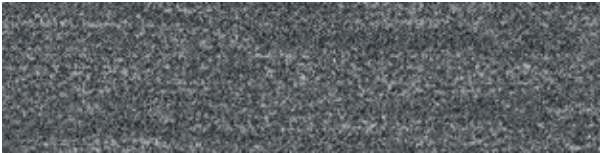
107283 CHARCOAL STONE



107285 IRON STONE



107287 BLACK STONE



107289 SLATE STONE

Specifications

Modular, 25cm x 1m	131150
Yarn Manufacturer	Aquafil
Yarn System	100% Recycled Content Nylon
Color System	100% Solution Dyed
Construction	Tufted Textured Loop
Preservative Protection	Intersept®
Soil/Stain Protection	Protekt2®
Pile Thickness	0.103 in, 2.6 mm
Pile Density	5,942 oz/yd³
Total Recycled Content	Up To 83%
Indoor Air Quality	Green Label Plus #GLP0820

Installation Methods



ASHLAR



HERRINGBONE



BROWSE IMAGES
ORDER SAMPLES



PRODUCT MANTLE ROCK COLOR 107288 GREY STONE INSTALLED ASHLAR



Rockland Road™ Colorline



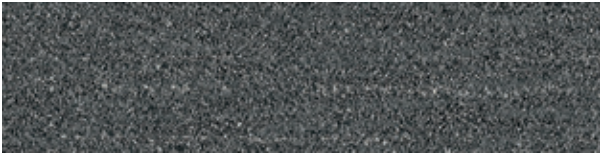
107306 TAUPE QUARRY



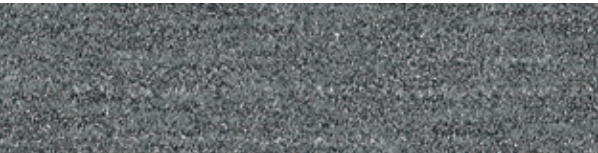
107307 CHARCOAL QUARRY



107308 LEAD QUARRY



107309 IRON QUARRY



107310 NICKEL QUARRY



107311 BLACK QUARRY



107312 GREY QUARRY



107313 SLATE QUARRY

Specifications

Modular, 25cm x 1m	125170
Yarn Manufacturer	Aquafil
Yarn System	100% Recycled Content Nylon
Color System	100% Solution Dyed
Construction	Tufted Pattern Loop
Preservative Protection	Intersept®
Soil/Stain Protection	Protekt2®
Pile Thickness	0.103 in, 2.6 mm
Pile Density	6,990 oz/yd³
Total Recycled Content	Up To 83%
Indoor Air Quality	Green Label Plus #GLP0820

Installation Methods



ASHLAR



HERRINGBONE



BROWSE IMAGES
ORDER SAMPLES

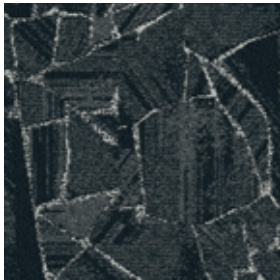
Mile Rock™ Colorline



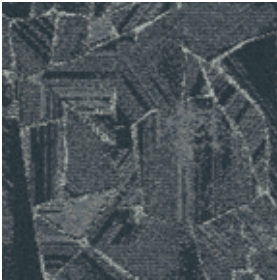
107314 BROWN MICA



107315 FOSSIL MICA



107316 INK MICA



107317 FLINT MICA

Specifications

Modular, 50cm x 50cm	125180
Yarn Manufacturer	Aquafil
Yarn System	100% Recycled Content Nylon
Color System	100% Solution Dyed
Construction	Tufted Sheared
Preservative Protection	Intersept®
Soil/Stain Protection	Protekt2®
Pile Thickness	0.194 in, 4.9 mm
Pile Density	6,866 oz/yd³
Total Recycled Content	Up To 85%
Indoor Air Quality	Green Label Plus #GLP0820

Installation Methods



NONDIRECTIONAL



MONOLITHIC



BROWSE IMAGES
ORDER SAMPLES



LVT PRODUCT BRUSHED LINES™ COLOR A01606 KOHL INSTALLED ASHLAR
CARPET PRODUCT MILE ROCK COLOR 107315 FOSSIL MICA INSTALLED NON DIRECTIONAL

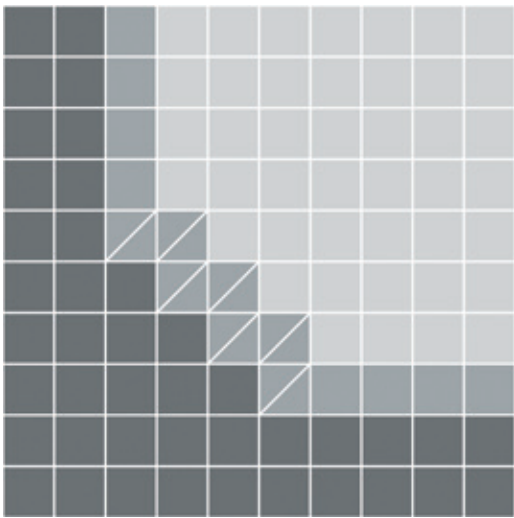
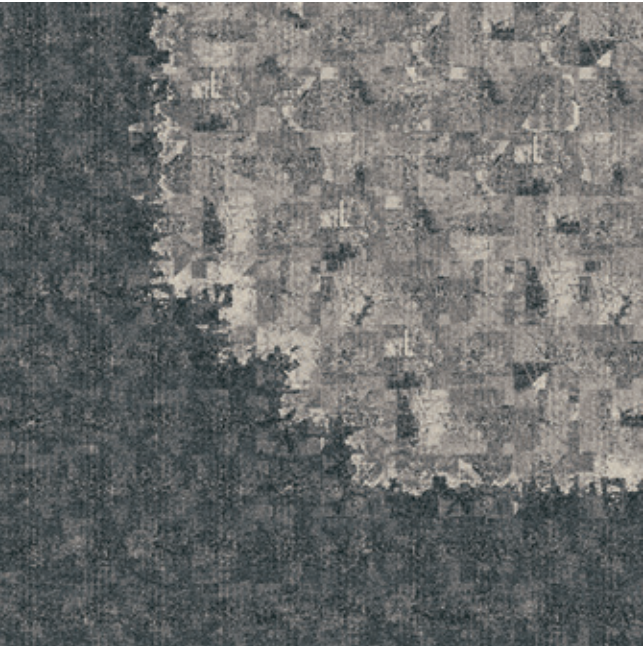


interface.com

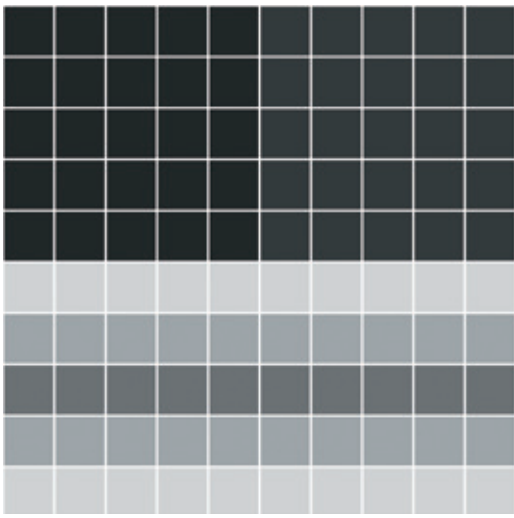
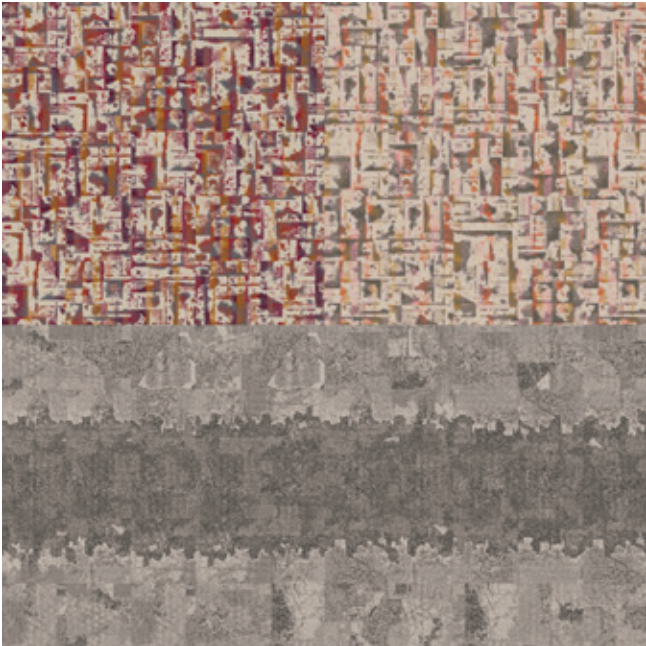
PRODUCT ROCKLAND ROAD COLOR 107308 LEAD QUARRY INSTALLED PATTERN BY TILE
PRODUCT FLOR YOU'RE SO VEIN COLOR 107442 BEIGE/SILVER INSTALLED NON DIRECTIONAL



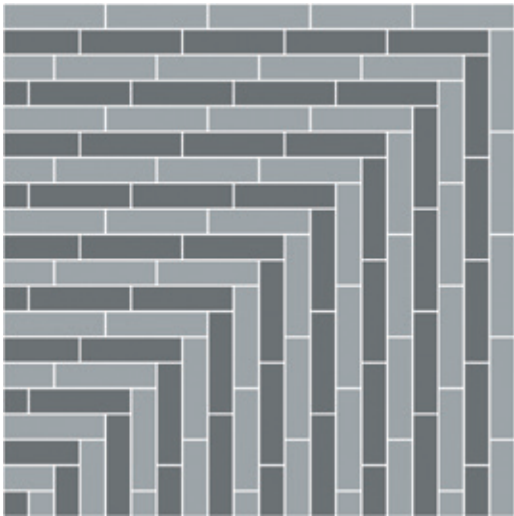
PRODUCT ROCK SPRINGS COLOR 107290 TAUPE GNEISS
PRODUCT MANTLE ROCK COLOR 107282 TAUPE STONE INSTALLED PATTERN BY TILE



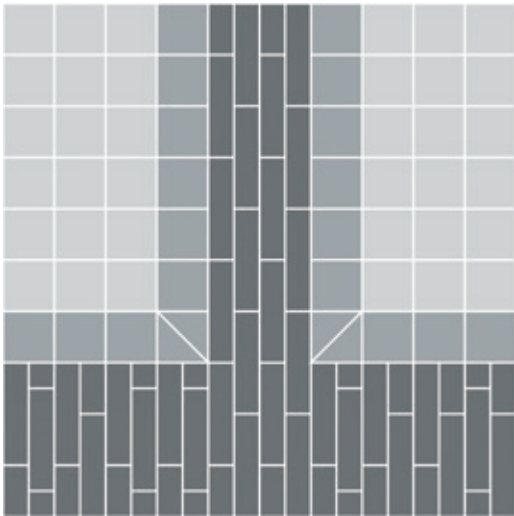
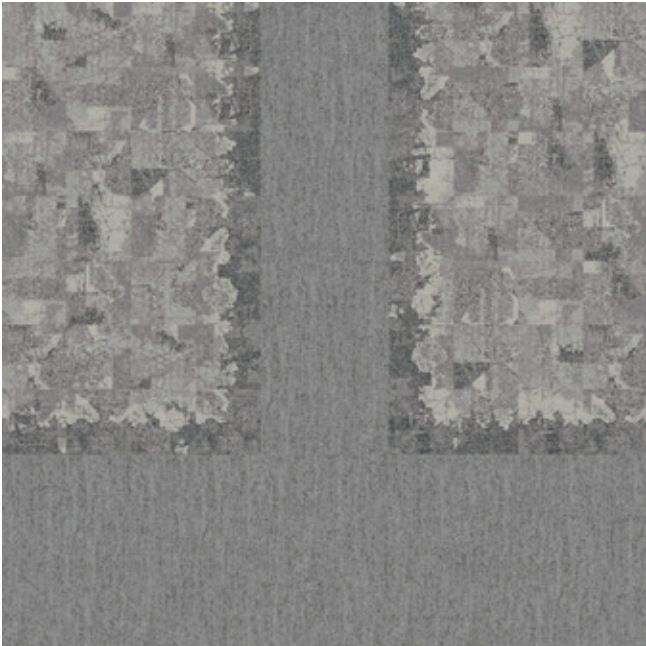
PRODUCT FLAT ROCK **COLOR** 107319 MINERAL TRAIL
PRODUCT BRIDGE CREEK **COLOR** 107323 MINERAL EDGE
PRODUCT MOUNTAIN ROCK **COLOR** 107327 MINERAL PEAK
INSTALLED PATTERN BY TILE



PRODUCT MOUNTAIN ROCK **COLOR** 107326 NATURAL PEAK
PRODUCT BRIDGE CREEK **COLOR** 107322 NATURAL EDGE
PRODUCT FLAT ROCK **COLOR** 107318 NATURAL TRAIL
PRODUCT PANOLA MOUNTAIN **COLORS** 107298 RUST LICHEN, 107299 BLUSH LICHEN **INSTALLED** PATTERN BY TILE



PRODUCT ROCK SPRINGS **COLOR** 107290 TAUPE GNEISS
PRODUCT MANTLE ROCK **COLOR** 107282 TAUPE STONE
INSTALLED PATTERN BY TILE



PRODUCT MANTLE ROCK **COLOR** 107286 NICKEL STONE
PRODUCT BRIDGE CREEK **COLOR** 107325 STEEL EDGE
PRODUCT MOUNTAIN ROCK **COLOR** 107329 STEEL PEAK
INSTALLED PATTERN BY TILE

Why Our Modular Flooring?



Modular Flooring
Performance and flexibility.
Interface's standard backing systems set the industry standard for modular performance. Tiles stay on the floor with no upcurl, no tapping and no rippling effect, yet are easy to selectively replace. Our modular carpet is easier to handle than bulky roll carpet and produces an average of just 3-4% waste compared to roll carpet's average of 14%. And it installs seamlessly with our LVT, no transition strips needed.



TacTiles™
No glue installation. Our revolutionary TacTiles installation system eliminates the need for glue, adhering tiles securely together to form a floor that “floats” for greater flexibility, easier replacement and long-term performance. The result? Less mess, less waste and virtually no VOCs, not to mention an environmental footprint that is over 90% lower than that of traditional glue adhesives. TacTiles are approved for use on GlasBac™, GlasBacRE, CQuest™GB, Graphlar™ and Graphlex™.



Intersept®
Mold protection. Our proprietary preservative, Intersept, protects our modular carpet against mold growth and odor-causing bacteria—guaranteed. Intersept treated carpet, with proper maintenance, shows no mold or bacterial growth when tested per the ASTM E2471 Standard Test Method. Intersept is EPA approved for safe use in carpet, water insoluble and contains no halogens, heavy metals, phenols or formaldehyde. Intersept is standard in Interface carpet tile products backed with GlasBac, GlasBacRE, CQuestGB, ReadyBac™ and CushionBac Renew™.



ReEntry™
Recyclable. Through our ReEntry program, we reclaim all Interface carpet tile. The result? Carpet tile products with up to 85% total recycled content, including as much as 25% post-consumer content.



Sustainability Transparency
Transparency and certified sustainability leadership come standard on Interface products, including published ingredients in Health Product Declarations (HPDs) and published Environmental Product Declarations (EPDs), which are based on full life cycle assessment (LCA). And, Interface carpet products are certified to the NSF 140 Sustainable Carpet Assessment Standard. Additionally, Interface flooring and recommended adhesives are 3rd party certified for low VOC emissions in compliance with California Department of Public Health (CDPH) Standard Method v1.2–2017. Carpet products made in our US facilities are made with 99% renewable energy.



Third Party Verification
The flooring products that we sell, including carpet tile, are carbon neutral across their full product life cycle through our third party verified Carbon Neutral Floors™ program. To find out more, visit interface.com/carbonneutral



Environmental Product Declaration (EPD) –
A statement of product ingredients and environmental impacts over the entire life cycle of a product. A comprehensive LCA is performed to ISO standards to develop an EPD, after which both the EPD and LCA must be third party verified.



Sustainable Assessment for Carpet – The only carpet sustainability standard in North America that evaluates the environmental impact of carpet for its entire lifecycle.



CRI Green Label Plus – An independent testing program that identifies carpet and adhesives with very low emissions of VOCs to help improve indoor air quality.



RECYCLED
Paper made from recycled material
FSC® C009723



PLEASE RECYCLE

Printed on 50% post consumer waste (PCW) fiber manufactured using wind power.

We have tried our very best to accurately represent product colors. However, due to the nature of printed materials, color of actual products may vary slightly. Please request a sample to see actual product color.



FLOR by Interface offers lush textures and bold patterns that are anything but business as usual. FLOR carpet tiles are the perfect design accent for offices, conference rooms and high-profile collaborative spaces – as area rugs or wall-to-wall installations. With all the performance benefits of Interface products, including the 15-year commercial warranty, they'll get the job done for years to come.

Samples
Order samples at interface.com. You'll receive email order confirmations, 24/7 access to order status and more. Not near a computer? You can also request samples by calling one of the numbers below.

United States 1.877.605.1500	Canada 1.866.398.3192
Brazil + 55.11.2196.0900	Latin America + 52.55.2791.6812

interface.com
Register at interface.com to:

- Browse products and order samples
- View carpet in a variety of room scenes
- Browse floor designs, change colors, view as a grid or in a room, download and share
- Check order status and inventory availability
- Sign up to get the latest information on Interface products and news

InterCircle Sample Return
Help us close the loop on the carpet sampling process. Through our InterCircle Sample Return program, sample materials stay out of the landfill and are re-used as samples until it is time to recycle them into new carpet. By reducing sample production material and diverting old materials from the landfill, we can reduce our overall environmental footprint.

Call 1.877.605.1500 (U.S.) or 1.866.398.3192 (Canada) to order a sample return bag with a prepaid return label.

All product specifications reflect averages derived from product sample testing, are subject to normal manufacturing and testing tolerances and inherent pattern variances, and may be changed without notice. For more information about these and other important attributes of the product(s) described herein, including recycled content and product warranty information, please see interface.com/disclaimer.