

# Global Change Collection Ground & Raku

[www.interface.com](http://www.interface.com)

**United States Headquarters**

1503 Orchard Hill Road  
LaGrange, GA 30240  
1.800.336.0225 ext.56511

**Canadian Headquarters**

233 Lahr Drive  
Belleville, ON K8N 5S2  
1.800.267.2149 ext.52128

**Brazilian Headquarters**

Rua Surubim, 577 - Conjuntos  
73/74 7º Andar  
04571-050 - São Paulo - SP  
+ 55 11 2196 0900

**Latin American Headquarters**

Montes Urales # 415 Piso 6  
Col. Lomas de Chapultepec  
México City, D.F. 11000  
Mexico  
+ 52 55 6395 5100

CIM # IFS00765 02/2017



**Mission Zero®**

our promise to eliminate any  
negative impact our company  
may have on the environment  
by the year 2020.

**Interface®**

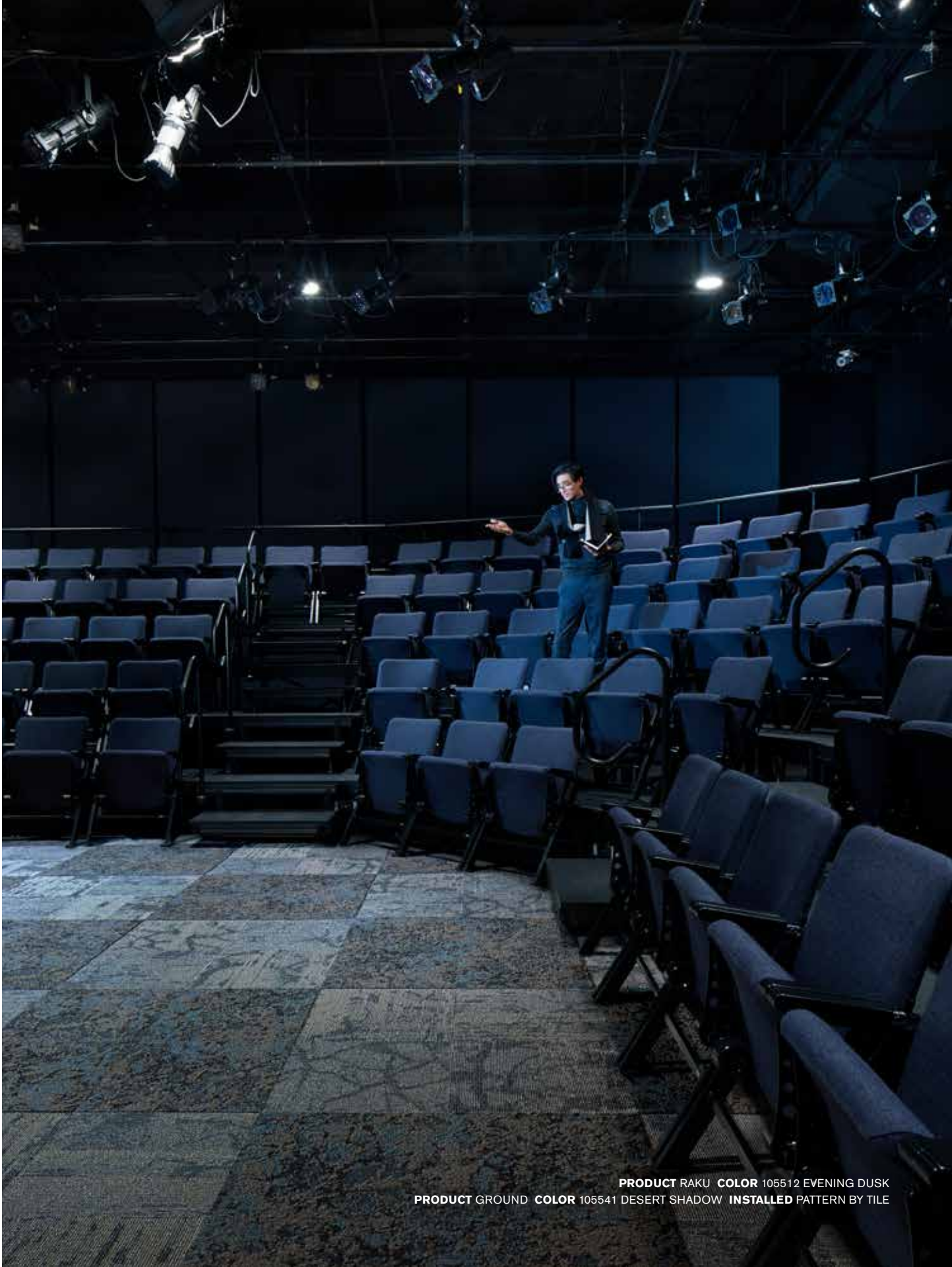
**The variation of nature within the modular framework**

Nature offers constantly changing surroundings and stimulates us in different ways. Built spaces can offer the same kind of variety, providing environments matched to the activities taking place.

Global Change extends our library with new colors, patterns and textures – disparate elements that combine to create a cohesive whole. A classic Interface offering, pairing nature-inspired design with the structure of a modular system.

This collection is a new expression of biophilic design, offering a varied sensory experience with wide-ranging colours, patterns, textures, formats and materials. This global collection comprises seven carpet tile ranges in both Squares and Skinny Planks, ranging from organic to crisp designs. Four draw inspiration from familiar organic patterns: Glazing and Shading recreate the shadows of a forest canopy on the floor, Ground and Raku reference different terrains. Progression I, II and III provide the connective tissue that binds one idea to another, seamlessly.

Global Change is available around the world and manufactured in Asia, North America, Australia and Europe.



Ground Colorline



105540 DAYLIGHT



105541 DESERT SHADOW



105542 EVENING DUSK



105543 MORNING MIST



105544 FAWN



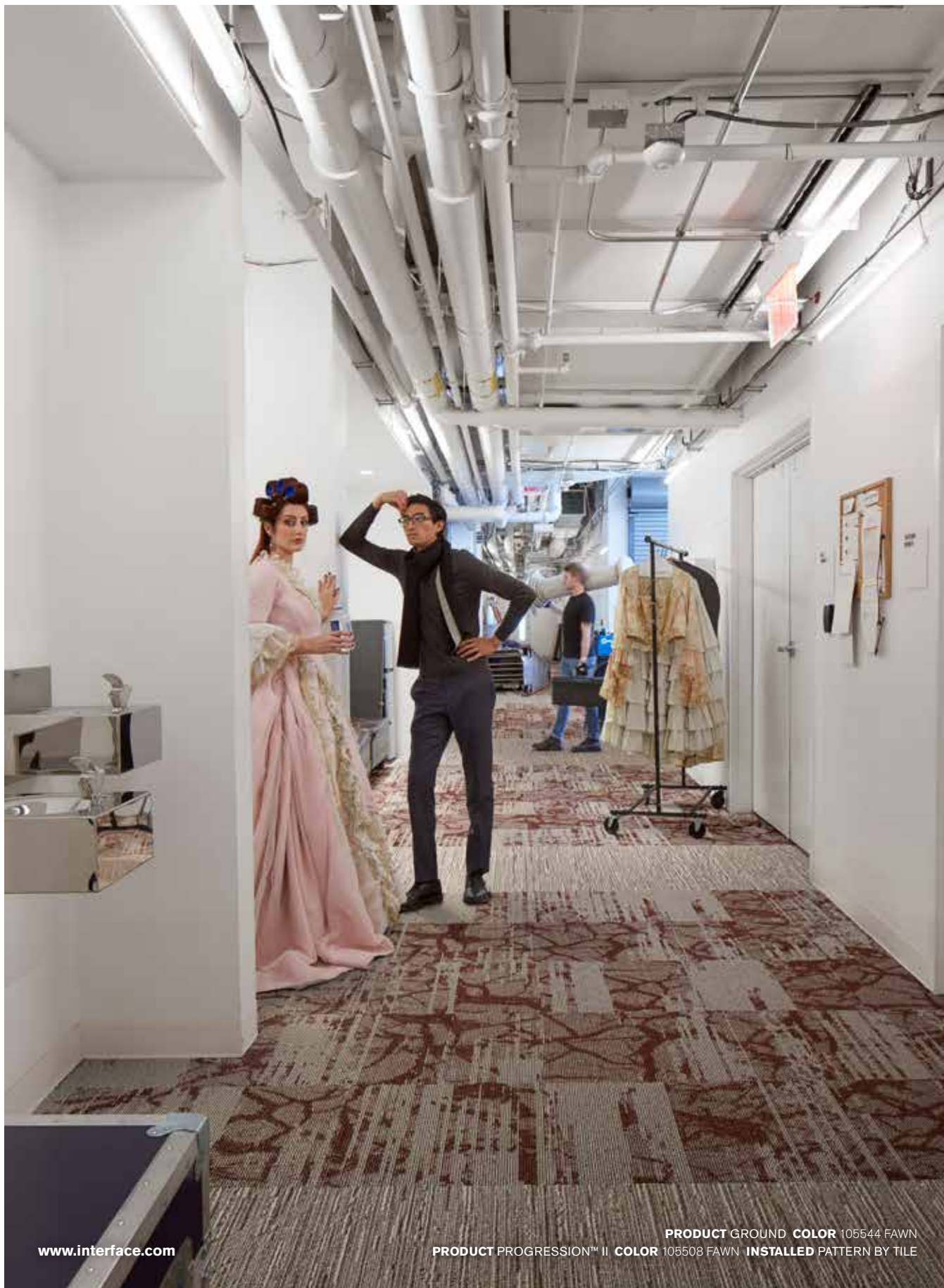
105545 ECLIPSE

Specifications

Modular, 50cm x 50cm	1472502500
Backing System	GlasBac® Tile
Yarn Manufacturer	Universal
Yarn System	Post-Consumer Content Type 6,6 Nylon
Color System	100% Solution Dyed
Construction	Tufted Textured Loop
Lifetime Antimicrobial	Intersept®
Soil/Stain Protection	Protekt2®
Pile Thickness	0.079 in 2.0 mm
Pile Density	6,577
Total Recycled Content	26-69%
Indoor Air Quality	CRI Green Label Plus #GLP0820

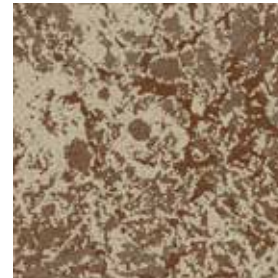


PRODUCT GROUND COLORS 105543 MORNING MIST, 105540 DAYLIGHT INSTALLED QUARTER-TURN

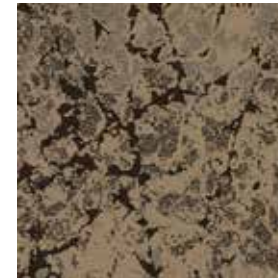




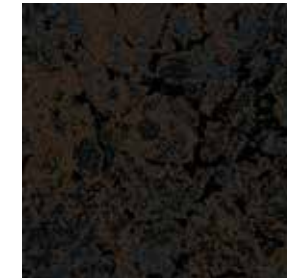
## Raku Colorline



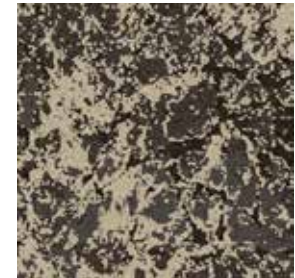
105510 DAYLIGHT



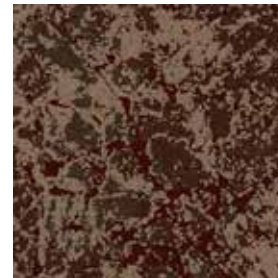
105511 DESERT SHADOW



105512 EVENING DUSK



105513 MORNING MIST



105514 FAWN



105515 ECLIPSE

## Specifications

Modular, 50cm x 50cm	1426802500
Backing System	GlasBac® Tile
Yarn Manufacturer	Universal
Yarn System	Post-Consumer Content Type 6,6 Nylon
Color System	100% Solution Dyed
Construction	Tufted Sheared
Lifetime Antimicrobial	Intersept®
Soil/Stain Protection	Protekt2®
Pile Thickness	0.128 in 3.3 mm
Pile Density	8,437
Total Recycled Content	26-66%
Indoor Air Quality	CRI Green Label Plus #GLP0820

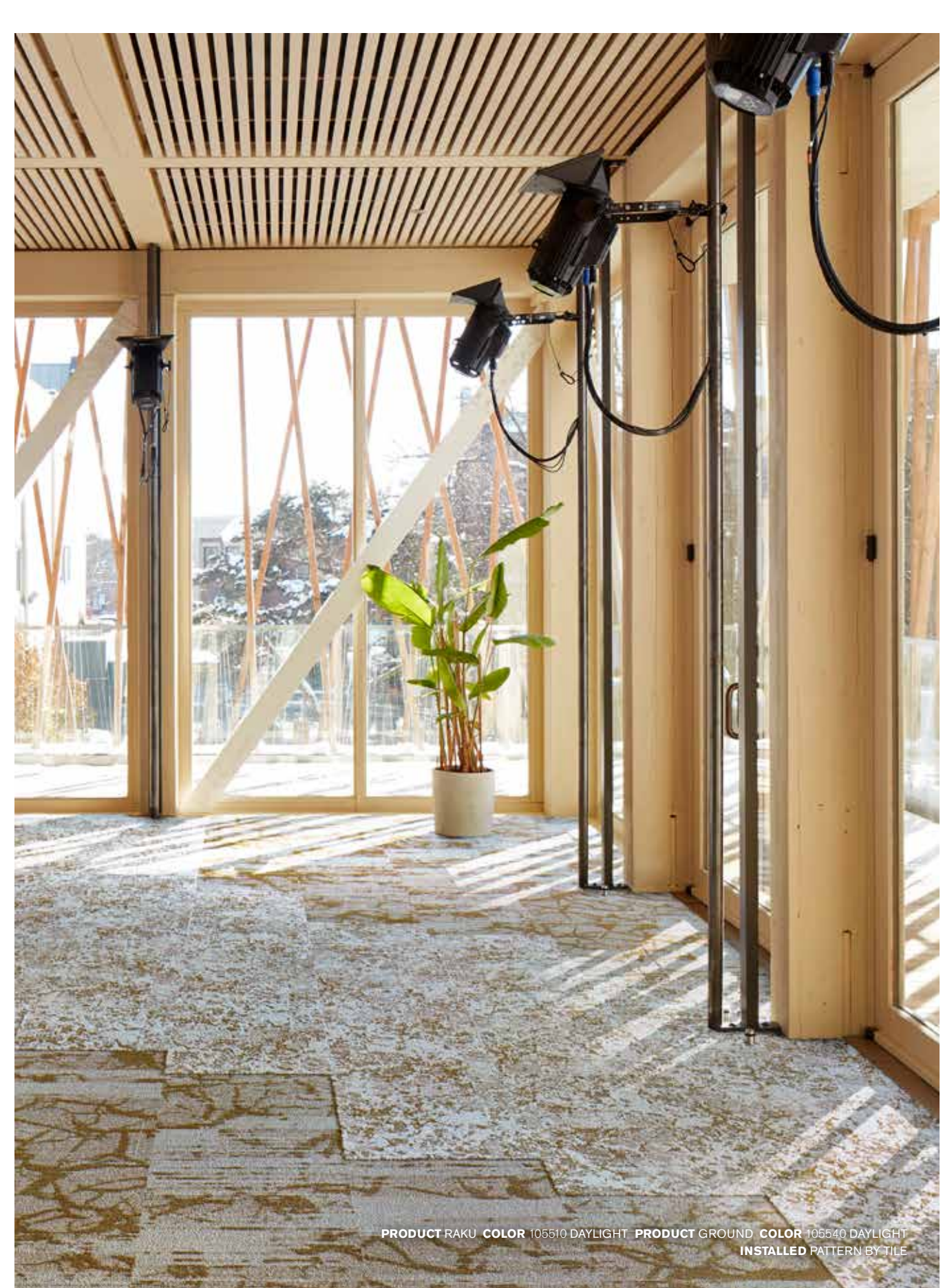




LITOWITZ ATRIUM

CARPET PRODUCT RAKU COLOR 105510 DAYLIGHT INSTALLED NON DIRECTIONAL  
LVT PRODUCT LEVEL SET | NATURAL WOODGRAINS COLOR A00204 BEECH  
INSTALLED ASHLAR

[www.interface.com](http://www.interface.com)

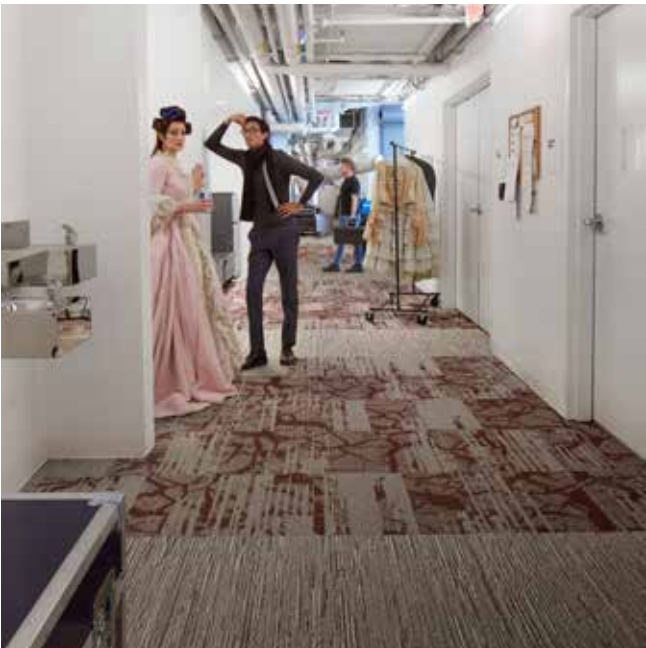
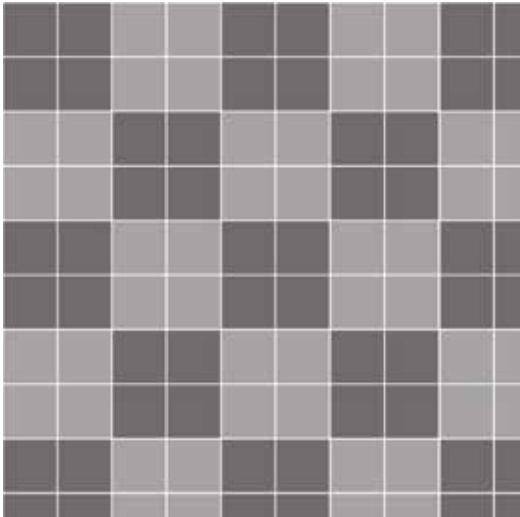


PRODUCT RAKU COLOR 105510 DAYLIGHT PRODUCT GROUND COLOR 105540 DAYLIGHT  
INSTALLED PATTERN BY TILE

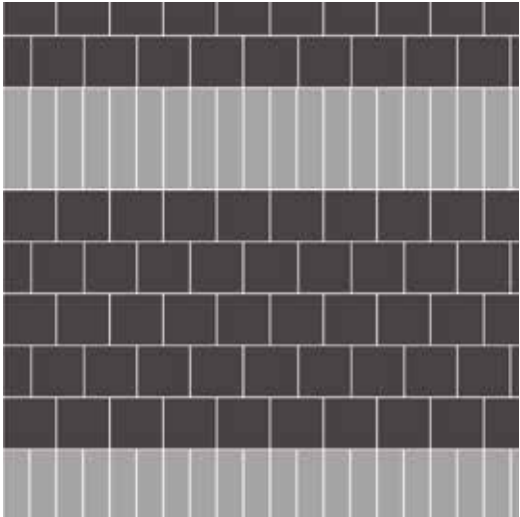
Design Ideas Below are floor layouts showing how to create the design ideas shared in several of the images featured in this brochure.



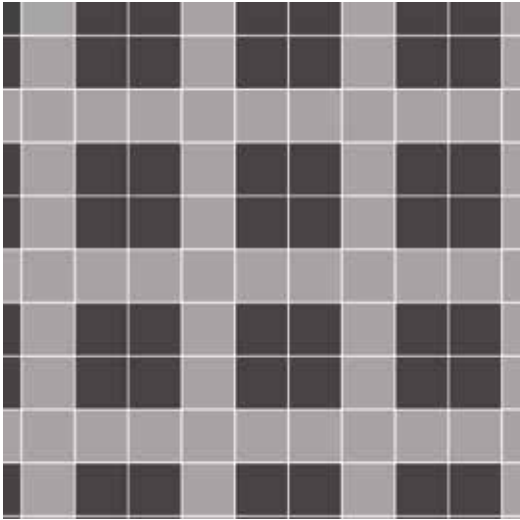
PRODUCT RAKU COLOR 105512 EVENING DUSK  
PRODUCT GROUND COLOR 105541 DESERT SHADOW INSTALLED PATTERN BY TILE



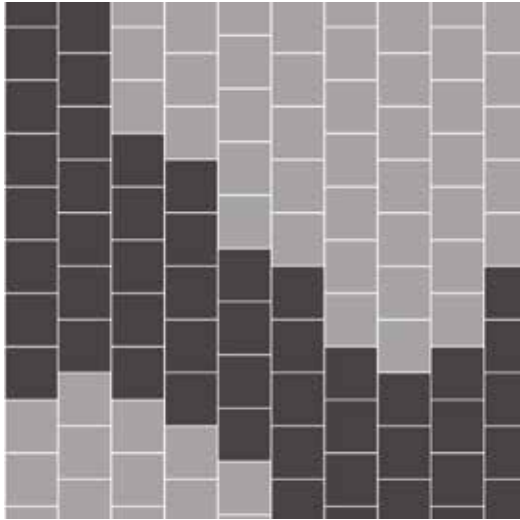
PRODUCT GROUND COLOR 105544 FAWN  
PRODUCT PROGRESSION II COLOR 105508 FAWN INSTALLED PATTERN BY TILE



PRODUCT GROUND COLORS 105543 MORNING MIST, 105540 DAYLIGHT INSTALLED QUARTER-TURN



PRODUCT RAKU COLOR 105510 DAYLIGHT PRODUCT GROUND COLOR 105540 DAYLIGHT INSTALLED PATTERN BY TILE





## Why Our Modular Carpet?



### Modular Carpet Tile

*Performance and Flexibility.* Interface's standard backing systems set the industry standard for modular performance. Tiles stay on the floor with no upcurl, no tapping and no rippling effect, yet are easy to selectively replace. Our modular carpet is also easier to handle, install and maintain than bulky roll carpet. And, it installs with less waste so you save time and money — 3-4% for typical modular carpet compared to an average waste factor of 14% for traditional roll carpet.



### Cool Carpet™

*The Low Carbon Option*  
Help stop climate change. ALL Interface modular carpet sold in North America is third party verified carbon neutral Cool Carpet. We start by using low-carbon materials and manufacturing processes, then Cool Carpet zeros out all remaining greenhouse gas (GHG) emissions associated with the entire lifecycle of your carpet, from raw material extraction through use and recycling. And carbon neutral Cool Carpet may be eligible for a USGBC or CaGBC LEED Innovation Credit.



### TacTiles®

*No Glue Installation.* Our revolutionary TacTiles installation system eliminates the need for glue, adhering tiles securely together to form a floor that "floats" for greater flexibility, easier replacement and long-term performance. The result? Less mess, less waste and virtually no VOCs, not to mention an environmental footprint that is over 90% lower than that of traditional glue adhesives.

### Samples

Order samples at [www.interface.com](http://www.interface.com). You'll receive email order confirmations, 24/7 access to order status and more. Not near a computer? You can also request samples by calling one of the numbers below.

United States 1.877.605.1500	Canada 1.866.398.3192
Brazil + 55 11 2196 0900	Latin America + 52 55 6395 5100

### [www.interface.com](http://www.interface.com)

Register at [www.interface.com](http://www.interface.com) to:

- Browse products and order samples
- View carpet in a variety of room scenes
- Browse floor designs, change colors, view as a grid or in a room, download and share
- Use our LEED Calculator
- Check order status and inventory availability
- Sign up to get the latest information on Interface products and news

### InterCircle™ Sample Return

Help us close the loop on the carpet sampling process. Through our InterCircle Sample Return program, sample materials stay out of the landfill and are re-used as samples until it is time to recycle them into new carpet. By reducing sample production material and diverting old materials from the landfill, we can reduce our overall environmental footprint.

Call 1.877.605.1500 (U.S.) or 1.866.398.3192 (Canada) to order a sample return bag with a prepaid return label.

### Third Party Certification

#### cool carpet™

**Cool Carpet** – Our third party verified carbon offset program zeroes out all greenhouse gas (GHG) emissions associated with the entire lifecycle of your carpet.



**Environmental Product Declaration (EPD)** – A statement of product ingredients and environmental impacts over the entire life cycle of a product. A comprehensive life cycle assessment (LCA) is performed to ISO standards to develop an EPD, after which both the EPD and LCA must be third party verified.



**Sustainable Assessment for Carpet** – The only carpet sustainability standard in North America that evaluates the environmental impact of carpet for its entire lifecycle.



**CRI Green Label Plus** – An independent testing program that identifies carpet and adhesives with very low emissions of VOCs to help improve indoor air quality.