

Global Change Collection Glazing & Shading

www.interface.com

United States Headquarters

1503 Orchard Hill Road
LaGrange, GA 30240
1.800.336.0225 ext.56511

Canadian Headquarters

233 Lahr Drive
Belleville, ON K8N 5S2
1.800.267.2149 ext.52128

Brazilian Headquarters

Rua Surubim, 577 - Conjuntos
73/74 7º Andar
04571-050 - São Paulo - SP
+ 55 11 2196 0900

Latin American Headquarters

Montes Urales # 415 Piso 6
Col. Lomas de Chapultepec
México City, D.F. 11000
Mexico
+ 52 55 6395 5100

CIM # IFS 0/2017



Mission Zero®

our promise to eliminate any
negative impact our company
may have on the environment
by the year 2020.

Interface®

The variation of nature within the modular framework
Nature offers constantly changing surroundings and stimulates us in different ways. Built spaces can offer the same kind of variety, providing environments matched to the activities taking place.

Global Change extends our library with new colors, patterns and textures – disparate elements that combine to create a cohesive whole. A classic Interface offering, pairing nature-inspired design with the structure of a modular system.

This collection is a new expression of biophilic design, offering a varied sensory experience with wide-ranging colours, patterns, textures, formats and materials. This global collection comprises seven carpet tile ranges in both Squares and Skinny Planks, ranging from organic to crisp designs. Four draw inspiration from familiar organic patterns: Glazing and Shading recreate the shadows of a forest canopy on the floor, Ground and Raku reference different terrains. Progression I, II and III provide the connective tissue that binds one idea to another, seamlessly.

Global Change is available around the world and manufactured in Asia, North America, Australia and Europe.







Shading Colorline



105516 DAYLIGHT



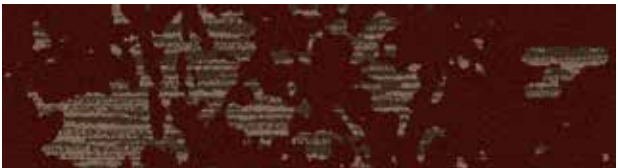
105517 DESERT SHADOW



105518 EVENING DUSK



105519 MORNING MIST



105520 FAWN



105521 ECLIPSE

Specifications

| | |
|------------------------|--------------------------------------|
| Modular, 25cm x 1m | 142690AK00 |
| Backing System | GlasBac® Tile |
| Yarn Manufacturer | Universal |
| Yarn System | Post-Consumer Content Type 6,6 Nylon |
| Color System | 100% Solution Dyed |
| Construction | Tufted Sheared |
| Lifetime Antimicrobial | Intersept® |
| Soil/Stain Protection | Protekt2® |
| Pile Thickness | 0.151 in 3.8 mm |
| Pile Density | 6,914 |
| Total Recycled Content | 26-66% |
| Indoor Air Quality | CRI Green Label Plus #GLP0820 |





Glazing Colorline



105546 DAYLIGHT



105547 DESERT SHADOW



105548 EVENING DUSK



105549 MORNING MIST



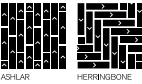
105550 FAWN



105551 ECLIPSE

Specifications

| | |
|------------------------|--------------------------------------|
| Modular, 25cm x 1m | 147260AK00 |
| Backing System | GlasBac® Tile |
| Yarn Manufacturer | Universal |
| Yarn System | Post-Consumer Content Type 6,6 Nylon |
| Color System | 100% Solution Dyed |
| Construction | Tufted Textured Loop |
| Lifetime Antimicrobial | Intersept® |
| Soil/Stain Protection | Protekt2® |
| Pile Thickness | 0.104 in 2.6 mm |
| Pile Density | 6,577 |
| Total Recycled Content | 26-69% |
| Indoor Air Quality | CRI Green Label Plus #GLP0820 |

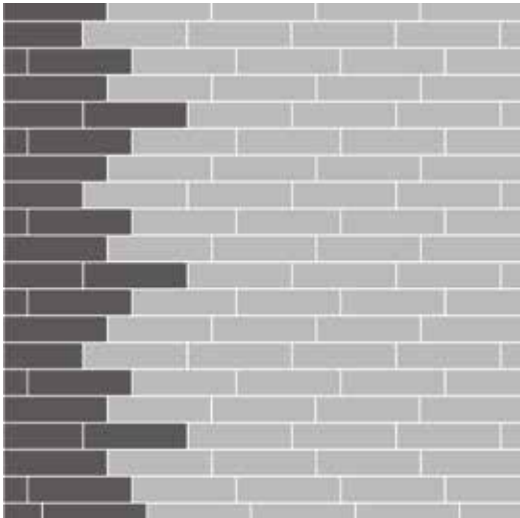


PRODUCT GLAZING COLOR 105547 DESERT SHADOW INSTALLED ASHLAR

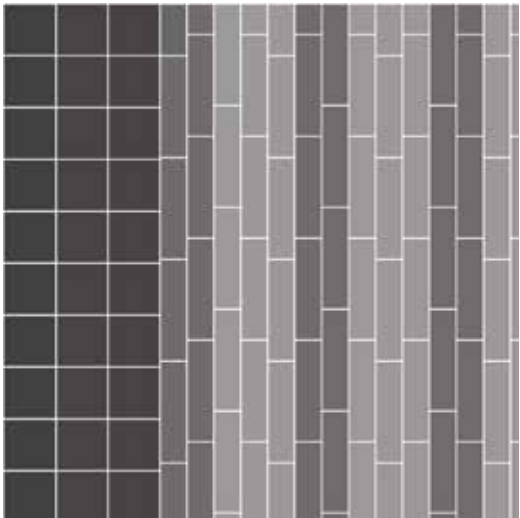
Design Ideas Below are floor layouts showing how to create the design ideas shared in several of the images featured in this brochure.



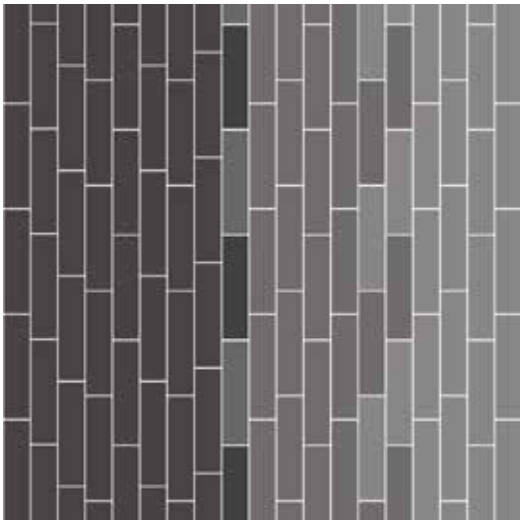
PRODUCT GLAZING **COLOR** 105550 FAWN
PRODUCT PROGRESSION II **COLOR** 105508 FAWN **INSTALLED** ASHLAR



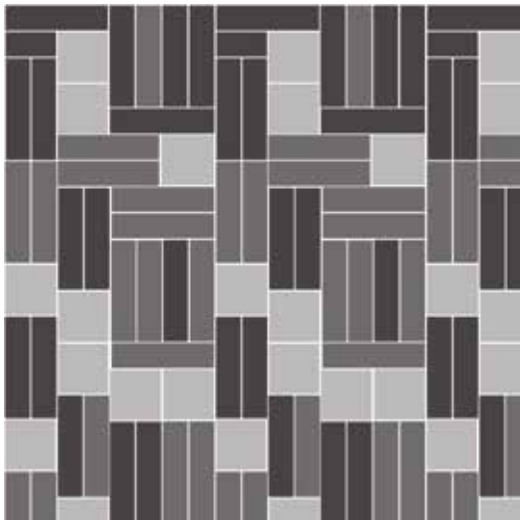
CARPET PRODUCT(S) GLAZING **COLOR** 105549 MORNING MIST **CARPET PRODUCT(S)** SHADING **COLOR** 105519 MORNING MIST **INSTALLED** ASHLAR
LVT PRODUCT LEVEL SET™ | TEXTURED STONES **COLOR** A00302 COOL POLISHED CEMENT **INSTALLED** QUARTER-TURN



PRODUCT GLAZING **COLOR** 105547 DESERT SHADOW **PRODUCT** PROGRESSION III **COLOR** 105535 DESERT SHADOW
PRODUCT PROGRESSION II **COLOR** 105505 DESERT SHADOW **INSTALLED** ASHLAR



PRODUCT GLAZING **COLOR** 105551 ECLIPSE **PRODUCT** GROUND **COLOR** 105545 ECLIPSE
PRODUCT PROGRESSION I **COLOR** 105503 ECLIPSE **INSTALLED** PATTERN BY TILE





Why Our Modular Carpet?



Modular Carpet Tile

Performance and Flexibility. Interface's standard backing systems set the industry standard for modular performance. Tiles stay on the floor with no upcurl, no tapping and no rippling effect, yet are easy to selectively replace. Our modular carpet is also easier to handle, install and maintain than bulky roll carpet. And, it installs with less waste so you save time and money — 3-4% for typical modular carpet compared to an average waste factor of 14% for traditional roll carpet.



Cool Carpet™

The Low Carbon Option
Help stop climate change. ALL Interface modular carpet sold in North America is third party verified carbon neutral Cool Carpet. We start by using low-carbon materials and manufacturing processes, then Cool Carpet zeros out all remaining greenhouse gas (GHG) emissions associated with the entire lifecycle of your carpet, from raw material extraction through use and recycling. And carbon neutral Cool Carpet may be eligible for a USGBC or CaGBC LEED Innovation Credit.



TacTiles®

No Glue Installation. Our revolutionary TacTiles installation system eliminates the need for glue, adhering tiles securely together to form a floor that "floats" for greater flexibility, easier replacement and long-term performance. The result? Less mess, less waste and virtually no VOCs, not to mention an environmental footprint that is over 90% lower than that of traditional glue adhesives.

Samples

Order samples at www.interface.com. You'll receive email order confirmations, 24/7 access to order status and more. Not near a computer? You can also request samples by calling one of the numbers below.

| | |
|---------------------------------|------------------------------------|
| United States 1.877.605.1500 | Canada 1.866.398.3192 |
| Brazil + 55 11 2196 0900 | Latin America + 52 55 6395 5100 |

www.interface.com

Register at www.interface.com to:

- Browse products and order samples
- View carpet in a variety of room scenes
- Browse floor designs, change colors, view as a grid or in a room, download and share
- Use our LEED Calculator
- Check order status and inventory availability
- Sign up to get the latest information on Interface products and news

InterCircle™ Sample Return

Help us close the loop on the carpet sampling process. Through our InterCircle Sample Return program, sample materials stay out of the landfill and are re-used as samples until it is time to recycle them into new carpet. By reducing sample production material and diverting old materials from the landfill, we can reduce our overall environmental footprint.

Call 1.877.605.1500 (U.S.) or 1.866.398.3192 (Canada) to order a sample return bag with a prepaid return label.

Third Party Certification

cool carpet™

Cool Carpet – Our third party verified carbon offset program zeroes out all greenhouse gas (GHG) emissions associated with the entire lifecycle of your carpet.



Environmental Product Declaration (EPD) – A statement of product ingredients and environmental impacts over the entire life cycle of a product. A comprehensive life cycle assessment (LCA) is performed to ISO standards to develop an EPD, after which both the EPD and LCA must be third party verified.



Sustainable Assessment for Carpet – The only carpet sustainability standard in North America that evaluates the environmental impact of carpet for its entire lifecycle.



CRI Green Label Plus – An independent testing program that identifies carpet and adhesives with very low emissions of VOCs to help improve indoor air quality.

PRODUCT GLAZING COLOR 105551 ECLIPSE PRODUCT GROUND COLOR 105545 ECLIPSE
PRODUCT PROGRESSION 1 COLOR 105503 ECLIPSE
INSTALLED PATTERN BY TILE