

A modern office interior featuring a large glass wall on the left, a concrete pillar on the right, and a patterned carpet. A wooden partition and a scooter are visible in the foreground. The ceiling has exposed pipes and lights.

World Woven Collection Stitch in Time & French Seams

Interface®

Just a few fabrics stand apart through the decades, defining eternal elegance. Among them are herringbone and bouclé. Best known for their roles in men's and women's suiting, both are considered handsome yet textural, reserved yet captivating. No easy trick.

Stitch in Time and French Seams expand the World Woven library of styles with a nod to these two classics from vintage fashion. Stitch in Time makes a truly tailored floor in any of the eight familiar neutrals drawn from the World Woven palette. French Seams adds a decorative detail with a unique construction that mingles sheared and loop ends in a colorful composition. Offered in our 25cm x 1m Skinny Planks™, a seamless effect is created in either pattern when installed in an ashlar method.

With a strong foundation of neutrals and an expanding offering of color, pattern and texture, the World Woven Collection, made from 100% recycled content nylon, presents endless possibilities for your next classic project.



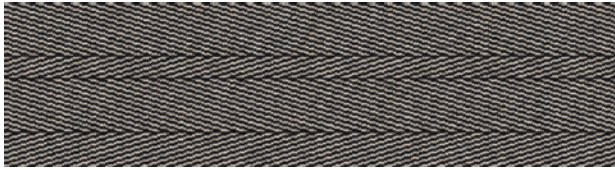
PRODUCT FRENCH SEAMS COLOR 105604 CHANTILLY
PRODUCT WW880 COLOR 105365 RAFFIA LOOM INSTALLED ASHLAR





CARPET PRODUCT FRENCH SEAMS COLOR 105605 TOULOUSE
CARPET PRODUCT STITCH IN TIME COLOR 105598 CHARCOAL STITCH
LVT PRODUCT LEVEL SET™ | TEXTURED WOODGRAINS COLOR A00405 GREY DUNE
INSTALLED ASHLAR

Stitch in Time Colorline



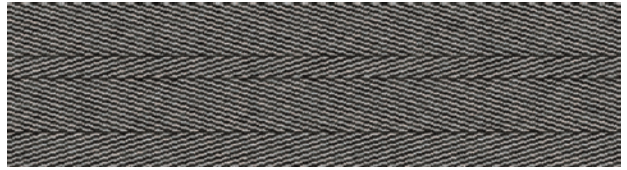
105596 CHARCOAL STITCH



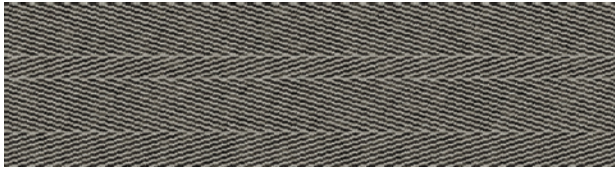
105597 BLACK STITCH



105598 BROWN STITCH



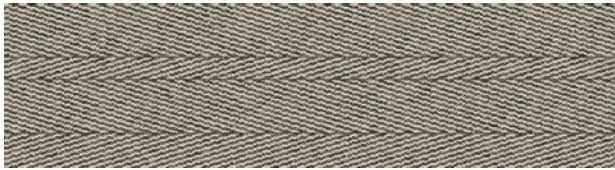
105599 NATURAL STITCH



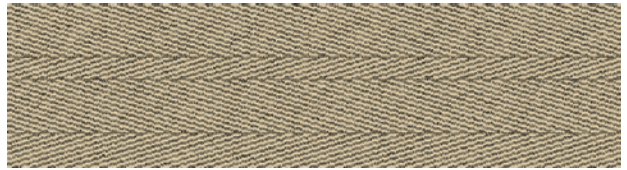
105600 FLANNEL STITCH



105601 SISAL STITCH



105602 LINEN STITCH



105603 RAFFIA STITCH

Specifications

Modular, 25cm x 1m	137880AK00
Backing System	GlasBac® Tile
Yarn Manufacturer	Aquafil
Yarn System	100% Recycled Content Type 6 Nylon
Color System	100% Solution Dyed
Construction	Tufted Level Loop
Lifetime Antimicrobial	Intersept®
Soil/Stain Protection	Protekt2®
Pile Thickness	0.080 in., 2.0 mm
Pile Density	11,700
Total Recycled Content	73%
Indoor Air Quality	CRI Green Label Plus #GLP0820





PRODUCT STITCH IN TIME COLOR 105599 NATURAL STITCH INSTALLED ASHLAR

French Seams Colorline



105604 CHANTILLY



105605 TOULOUSE



105606 CANNES



105607 LYON



105608 AVALLON



105609 MARSEILLE



105610 VERSAILLES



105611 ARLES

Specifications

Modular, 25cm x 1m	125550AK00
Backing System	GlasBac® Tile
Yarn Manufacturer	Aquafil
Yarn System	100% Recycled Content Type 6 Nylon
Color System	100% Solution Dyed
Construction	Tufted Cut & Loop
Lifetime Antimicrobial	Intersept®
Soil/Stain Protection	Protekt2®
Pile Thickness	0.085 in., 2.2 mm
Pile Density	8,894
Total Recycled Content	71%
Indoor Air Quality	CRI Green Label Plus #GLP0820





PRODUCT FRENCH SEAMS COLOR 105608 AVALLON INSTALLED HERRINGBONE

Why Our Modular Carpet?



Modular Carpet Tile

Performance and Flexibility. Interface's standard backing systems set the industry standard for modular performance. Tiles stay on the floor with no upcurl, no tapping and no rippling effect, yet are easy to selectively replace. Our modular carpet is also easier to handle, install and maintain than bulky roll carpet. And, it installs with less waste so you save time and money — 3-4% for typical modular carpet compared to an average waste factor of 14% for traditional roll carpet.

Samples

Order samples at www.interface.com. You'll receive email order confirmations, 24/7 access to order status and more. Not near a computer? You can also request samples by calling one of the numbers below.

United States 1.877.605.1500	Canada 1.866.398.3192
Brazil + 55 11 2196 0900	Latin America + 52 55 6395 5100



Cool Carpet™

The Low Carbon Option

Help stop climate change. ALL Interface modular carpet sold in North America is third party verified climate neutral Cool Carpet. We start by using low-carbon materials and manufacturing processes, then Cool Carpet zeros out all remaining greenhouse gas (GHG) emissions associated with the entire lifecycle of your carpet, from raw material extraction through use and recycling.

www.interface.com

Register at www.interface.com to:

- Browse products and order samples
- View carpet in a variety of room scenes
- Browse floor designs, change colors, view as a grid or in a room, download and share
- Use our LEED Calculator
- Check order status and inventory availability
- Sign up to get the latest information on Interface products and news



TacTiles®

No Glue Installation. Our revolutionary TacTiles installation system eliminates the need for glue, adhering tiles securely together to form a floor that "floats" for greater flexibility, easier replacement and long-term performance. The result? Less mess, less waste and virtually no VOCs, not to mention an environmental footprint that is over 90% lower than that of traditional glue adhesives.

InterCircle™ Sample Return

Help us close the loop on the carpet sampling process. Through our InterCircle Sample Return program, sample materials stay out of the landfill and are re-used as samples until it is time to recycle them into new carpet. By reducing sample production material and diverting old materials from the landfill, we can reduce our overall environmental footprint.

Call 1.877.605.1500 (U.S.) or 1.866.398.3192 (Canada) to order a sample return bag with a prepaid return label.

Third Party Certification

cool carpet™

Cool Carpet – Our third party verified carbon offset program zeroes out all greenhouse gas (GHG) emissions associated with the entire lifecycle of your carpet.



Environmental Product Declaration (EPD) – A statement of product ingredients and environmental impacts over the entire life cycle of a product. A comprehensive life cycle assessment (LCA) is performed to ISO standards to develop an EPD, after which both the EPD and LCA must be third party verified.



Sustainable Assessment for Carpet – The only carpet sustainability standard in North America that evaluates the environmental impact of carpet for its entire lifecycle.



CRI Green Label Plus – An independent testing program that identifies carpet and adhesives with very low emissions of VOCs to help improve indoor air quality.



Intersept®

Mold Protection. Our proprietary preservative, Intersept, protects our modular carpet against mold growth and odor-causing bacteria — guaranteed. Intersept treated carpet, with proper maintenance, shows no mold or bacterial growth when tested per the ASTM E2471 Standard Test Method. Intersept is EPA approved for safe use in carpet, water insoluble and contains no halogens, heavy metals, phenols or formaldehyde.



ReEntry®

Recyclable is Now a Reality. Through our ReEntry program and partnerships with our fiber suppliers and recycling centers throughout North America, separated Type 6 and 6,6 nylon are recycled into new 6 and 6,6 nylon, while separated GlasBac® and similar competitor backings are recycled into GlasBac®RE non-virgin PVC backing using our Cool Blue™ technology. The result? Products with up to 89% total recycled content, including as much as 27% post-consumer content.



Sustainable Choice

Environmental Responsibility. More than 95% of Interface products manufactured in the Americas carry the GreenCircle Certified Environmental Facts label, which has verified that standard Interface products are manufactured using 99% renewable energy and offer a minimum of 66% and 80% total recycled content when backed with GlasBac and GlasBacRE backing respectively.

Transparency and certified sustainability leadership come standard on all Interface products, including published ingredients via HPDs (Health Product Declarations) or Declare Labels. In addition, more than 99% of our products globally have a published EPD (Environmental Product Declaration), which evaluates consistent factors based on full life cycle assessment (LCA). And, all Interface products with GlasBacRE backing are certified to the Platinum level of the NSF/ANSI 140 Sustainable Assessment for Carpet. GlasBac backed products meet the Gold level. NSF/ANSI 140 certified products contribute toward a USGBC or CaGBC LEED credit.



Printed on 50% post consumer waste (PCW) fiber manufactured using wind power.

We have tried our very best to accurately represent product colors. However, due to the nature of printed materials, color of actual products may vary slightly. Please request a sample to see actual product color.

All product specifications reflect averages derived from product sample testing, are subject to normal manufacturing and testing tolerances and inherent pattern variances, and may be changed without notice. For more information about these and other important attributes of the product(s) described herein, including recycled content and product warranty information, please see www.interface.com/disclaimer.

www.interface.com

United States Headquarters

1503 Orchard Hill Road
LaGrange, GA 30240
1.800.336.0225 ext. 56511

Canadian Headquarters

233 Lahr Drive
Belleville, ON K8N 5S2
1.800.267.2149 ext. 52128

Brazilian Headquarters

Rua Surubim, 577 - Conjuntos
73/74 7º Andar
04571-050 - São Paulo - SP
+ 55 11 2196 0900

Latin American Headquarters

Montes Urales # 415 Piso 6
Col. Lomas de Chapultepec
México City, D.F. 11000
Mexico
+ 52 55 6395 5100

CIM# IFS00785 09/2017



Mission Zero®

our promise to eliminate any
negative impact our company
may have on the environment
by the year 2020.