

# First Option Squares

**[www.interface.com](http://www.interface.com)**

**United States Headquarters**

1280 West Peachtree Street NW  
Atlanta, GA 30309  
1.800.634.6032

**Canadian Headquarters**

233 Lahr Drive  
Belleville, ON K8N 5S2  
1.800.267.2149 ext.2128

**Brazilian Headquarters**

Rua Surubim, 577 - Conjuntos  
73/74 7o Andar  
04571-050 - São Paulo - SP  
+ 55 11 2196 0900

**Latin American Headquarters**

Montes Urales # 415 Piso 6  
Col. Lomas de Chapultepec  
México City, D.F. 11000  
Mexico  
+ 52 55 6395 5100

CIM # IFS00641 03/2020



Climate change is undeniable. And reversible. Our mission is to prove it.  
**Join the #ClimateTakeBack and help create a climate fit for life.**

**Interface®**



First Option™ Squares

The perfect interior requires the perfect selection of stylish, high performance carpet. Thankfully, you have options. Whether you're working on a big project, meeting with new customers or gathering a team, the earthy tones of Meet™, Work™ and Gather™ make any space an inviting place to spend the day.

Meet is a finely textured pattern, adding just the right finish to smaller spaces such as private offices or small conference rooms. Work combines a soft range of hues in our nimble i2® construction, providing scale and flexibility to the more populated areas of the floor. And Gather, with its energetic flashes of color, can define an open, casual meeting space or direct circulation across the floor.

The three products collaborate in a variety of settings – like corporate and medical offices, schools, retail spaces and multifamily housing. To add interest and character to your next carpet project, make First Option your first option.

**PRODUCT** MEET   **COLOR** 180772 PUMICE   **PRODUCT** GATHER  
**COLOR** 180780 PUMICE ACCENT   **INSTALLED** QUARTER-TURN



















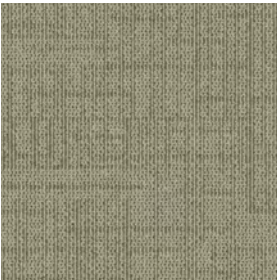
Meet™ Colorline



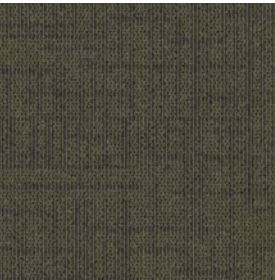
180770 FOG



180771 WHEAT



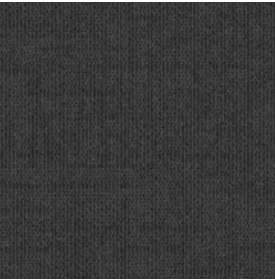
180772 PUMICE



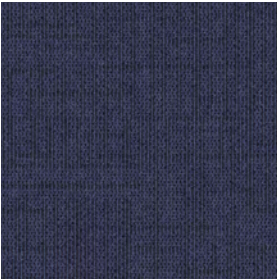
180773 OREGANO



180774 GULL



180775 SLATE



180776 MARINE



180777 TOBACCO

Specifications

Modular, 50 cm x 50 cm	19DR302500
Backing System	GlasBac® Tile
Yarn Manufacturer	Aquafil
Yarn System	100% Recycled Content Nylon
Color System	100% Solution Dyed
Construction	Tufted Textured Loop
Preservative Protection	Intersept®
Soil/Stain Protection	Protekt <sup>2</sup> ®
Pile Thickness	0.099 in., 2.5 mm
Pile Density	5,091
Total Recycled Content	75%
Indoor Air Quality	CRI Green Label Plus #GLP0820



QUARTER-TURN





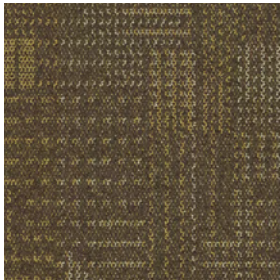
Work™ Colorline



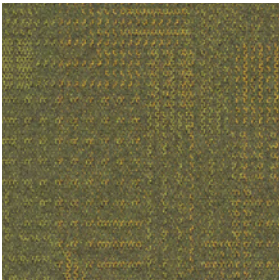
180794 MIST



180795 SEAGRASS



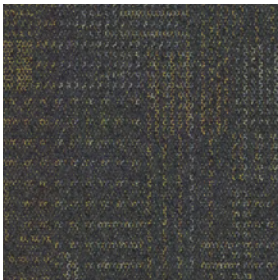
180796 CHESTNUT



180797 AUTUMN



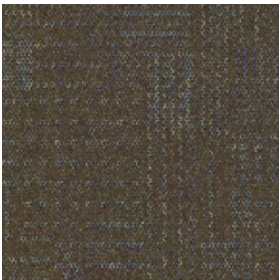
180798 CHARCOAL



180799 FLINT



180800 TIDAL



180801 MARSH

Specifications



Modular, 50 cm x 50 cm	19DR602500
Backing System	GlasBac® Tile
Yarn Manufacturer	Aquafil
Yarn System	100% Recycled Content Nylon
Color System	100% Solution Dyed
Construction	Tufted Textured Loop
Preservative Protection	Intersept®
Soil/Stain Protection	Protekt <sup>2</sup> ®
Pile Thickness	0.096 in., 2.4 mm
Pile Density	5,625
Total Recycled Content	75%
Indoor Air Quality	CRI Green Label Plus #GLP0820

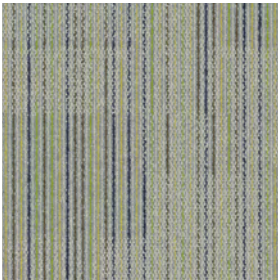


NON DIRECTIONAL





Gather™ Colorline



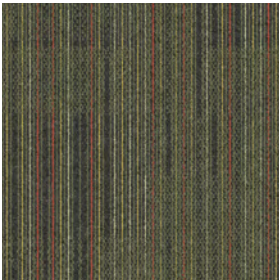
180778 FOG ACCENT



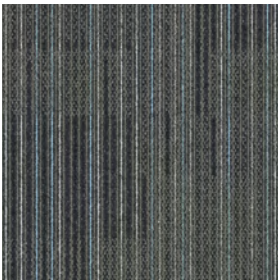
180779 WHEAT ACCENT



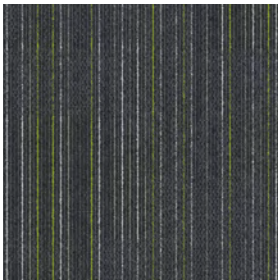
180780 PUMICE ACCENT



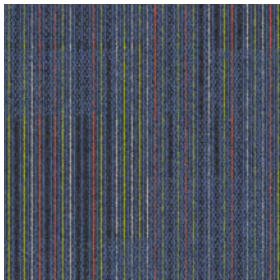
180781 OREGANO ACCENT



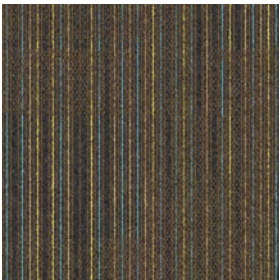
180782 GULL ACCENT



180783 SLATE ACCENT



180784 MARINE ACCENT



180785 TOBACCO ACCENT

Specifications



Modular, 50 cm x 50 cm	19DR402500
Backing System	GlasBac® Tile
Yarn Manufacturer	AquaFil
Yarn System	100% Recycled Content Nylon
Color System	100% Solution Dyed
Construction	Tufted Textured Loop
Preservative Protection	Intersept®
Soil/Stain Protection	Protekt <sup>2</sup> ®
Pile Thickness	0.101 in., 2.6 mm
Pile Density	5,347
Total Recycled Content	75%
Indoor Air Quality	CRI Green Label Plus #GLP0820





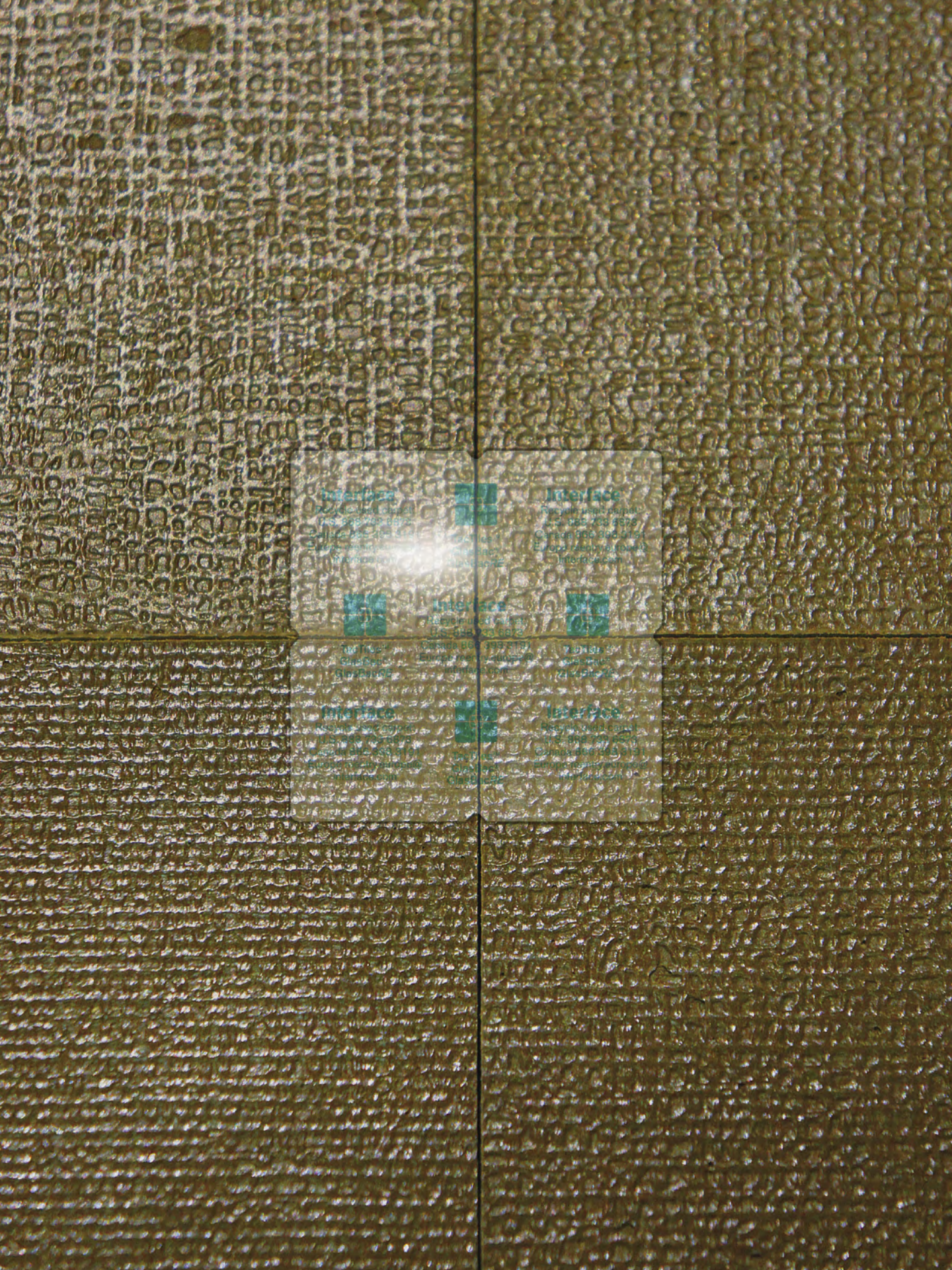
Say goodbye to glue and hello to a faster, cleaner, easier installation with TacTiles.

Get out of a sticky situation with TacTiles®, Interface's revolutionary installation system. These handy little squares eliminate the need for glue by adhering carpet tiles to each other, not the floor below, making installation a breeze.

Here are a few other ways TacTiles create less mess, less waste and more savings:

- They have virtually no volatile organic compounds (VOCs) or harsh odors, so employees and customers won't be disrupted during installation or maintenance;
- They create a “floating floor” that means greater flexibility and easier replacement;
- They provide an environmental footprint more than 90% lower than traditional glues;
- They're much easier to work with – one roll of TacTiles installs the same amount of carpet as a 42-lb bucket of the sticky stuff.

And they work. TacTiles connectors have been used to successfully install Interface carpet tiles in offices, shopping malls, university campuses, K-12 classrooms, churches, libraries and more.





Why Our Modular Carpet?



Modular Flooring

*Performance and flexibility.* Interface's standard backing systems set the industry standard for modular performance. Tiles stay on the floor with no upcurl, no tapping and no rippling effect, yet are easy to selectively replace. Our modular carpet is easier to handle than bulky roll carpet and produces an average of just 3-4% waste compared to roll carpet's average of 14%. And it installs seamlessly with our LVT, no transition strips needed.



Carbon Neutral Floors™

*Create a climate fit for life.* All Interface flooring sold globally is third party verified carbon neutral. We've taken a holistic approach to achieve carbon neutrality, first through reducing the carbon footprint of our products and then using carbon offsets for the remainder, including the emissions from raw materials, our manufacturing processes and product use to end of life.



TacTiles™

*No glue installation.* Our revolutionary TacTiles installation system eliminates the need for glue, adhering tiles securely together to form a floor that “floats” for greater flexibility, easier replacement and long-term performance. The result? Less mess, less waste and virtually no VOCs, not to mention an environmental footprint that is over 90% lower than that of traditional glue adhesives.



Intersept®

*Mold protection.* Our proprietary preservative, Intersept, protects our modular carpet against mold growth and odor-causing bacteria—guaranteed. Intersept treated carpet, with proper maintenance, shows no mold or bacterial growth when tested per the ASTM E2471 Standard Test Method. Intersept is EPA approved for safe use in carpet, water insoluble and contains no halogens, heavy metals, phenols or formaldehyde.



ReEntry™

*Recyclable is now a reality.* Through our ReEntry program and partnerships with our fiber suppliers and recycling centers throughout North America, separated Type 6 and 6,6 nylon are recycled into new 6 and 6,6 nylon while separated GlasBac™, GlasBacRE, similar competitive backings and our own LVT are recycled into new GlasBacRE non-virgin PVC backing using our Cool Blue™ technology. The result? Products with up to 89% total recycled content, including as much as 27% post-consumer content.



Sustainable Choice

*Environmental responsibility.* More than 95% of Interface products manufactured in the Americas carry the GreenCircle Certified Environmental Facts label, which has verified that standard Interface products are manufactured using 99% renewable energy and offer a minimum of 66% and 80% total recycled content when backed with GlasBac and GlasBacRE backing respectively.

Samples

Order samples at [www.interface.com](http://www.interface.com). You'll receive email order confirmations, 24/7 access to order status and more. Not near a computer? You can also request samples by calling one of the numbers below.

United States      Canada  
1.877.605.1500      1.866.398.3192

Brazil      Latin America  
+ 55 11 2196 0900      + 52 55 6395 5100

[www.interface.com](http://www.interface.com)

Register at [www.interface.com](http://www.interface.com) to:

- Browse products and order samples
- View carpet in a variety of room scenes
- Browse floor designs, change colors, view as a grid or in a room, download and share
- Use our LEED Calculator
- Check order status and inventory availability
- Sign up to get the latest information on Interface products and news

InterCircle™ Sample Return

Help us close the loop on the carpet sampling process. Through our InterCircle Sample Return program, sample materials stay out of the landfill and are re-used as samples until it is time to recycle them into new carpet. By reducing sample production material and diverting old materials from the landfill, we can reduce our overall environmental footprint.

Call 1.877.605.1500 (U.S.) or 1.866.398.3192 (Canada) to order a sample return bag with a prepaid return label.

Third Party Certification



**Bureau Veritas** – All Interface flooring sold globally is third party verified carbon neutral.



**Environmental Product Declaration (EPD)** – A statement of product ingredients and environmental impacts over the entire life cycle of a product. A comprehensive life cycle assessment (LCA) is performed to ISO standards to develop an EPD, after which both the EPD and LCA must be third party verified.



**Sustainable Assessment for Carpet** – The only carpet sustainability standard in North America that evaluates the environmental impact of carpet for its entire lifecycle.



**CRI Green Label Plus** – An independent testing program that identifies carpet and adhesives with very low emissions of VOCs to help improve indoor air quality.

All product specifications reflect averages derived from product sample testing, are subject to normal manufacturing and testing tolerances and inherent pattern variances, and may be changed without notice. For more information about these and other important attributes of the product(s) described herein, including recycled content and product warranty information, please see [www.interface.com/disclaimer](http://www.interface.com/disclaimer).



Printed on 50% post consumer waste (PCW) fiber manufactured using wind power.



We have tried our very best to accurately represent product colors. However, due to the nature of printed materials, color of actual products may vary slightly. Please request a sample to see actual product color.