



EvenSong Collection

Winter Sun
Snow Moon
Afternoon Light

Interface®

Evensong™ Collection

Change is in the air. Subtle gestures mark the flow from one season to the next: the angle of the shadows, the length of the day and the character of the wind mixing warm and cool.

Evensong Collection captures the nuance of these transitions in Winter Sun,™ Snow Moon™ and Afternoon Light.™ Winter Sun is a linear texture that pours across the floor in an ombre of hues, while Snow Moon bends and waves in curves like the currents of a winter wind. Afternoon Light, a small texture, takes a deeper dive into the shades of the neutral palette of the collection. Each style is presented in our 25cm x 1m planks format to accentuate the elegance of each.

When you specify flooring from Interface, you're selecting products that are carbon neutral across their full product life cycle through our Carbon Neutral Floors™ program.



PRODUCT SNOW MOON COLOR 105328 DAWN MOON INSTALLED ASHLAR



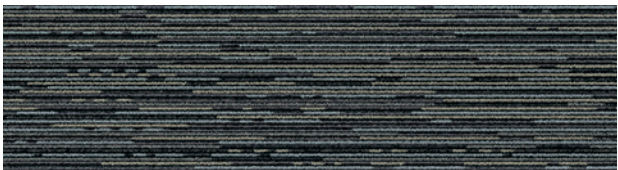


PRODUCT AFTERNOON LIGHT **COLORS** 105298 NOON LIGHT, 105294 DUSK LIGHT
PRODUCT WINTER SUN **COLOR** 105317 MIDNIGHT SUN **INSTALLED** HERRINGBONE

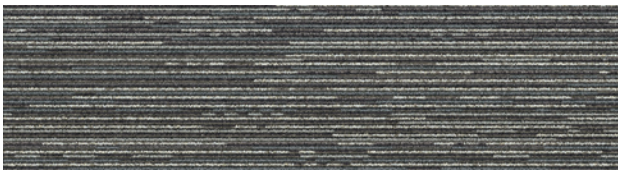
Winter Sun™ Colorline



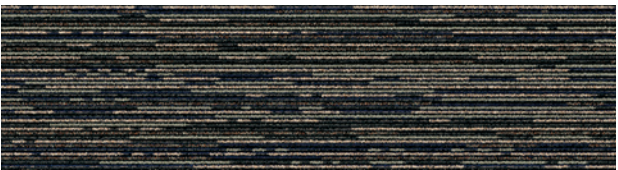
105310 DUSK SUN



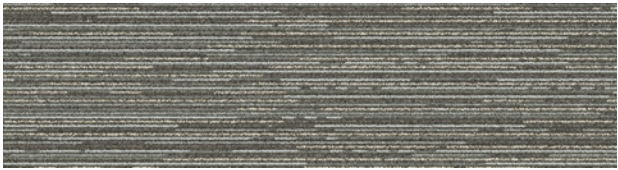
105311 EVENING SUN



105312 DAWN SUN



105313 SUNSET SUN



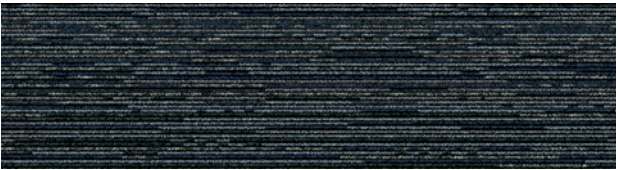
105314 NOON SUN



105315 SUNRISE SUN



105316 MORNING SUN



105317 MIDNIGHT SUN

Specifications

Modular, 25cm x 1m	13899
Yarn Manufacturer	Aquafil
Yarn System	100% Recycled Content Nylon
Color System	100% Solution Dyed
Construction	Tufted Textured Loop
Preservative Protection	Intersept®
Soil/Stain Protection	Protekt ² ®
Pile Thickness	0.086 in., 2.2 mm
Pile Density	6,698
Total Recycled Content	Up to 83%
Indoor Air Quality	CRI Green Label Plus #GLP0820

View the full product specification on [interface.com](https://www.interface.com)

Installation Methods



ASHLAR



HERRINGBONE

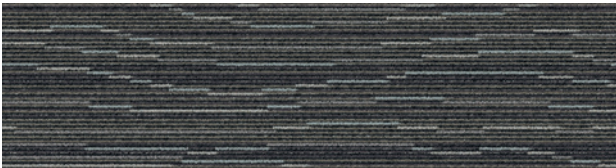


BROWSE IMAGES
ORDER SAMPLES

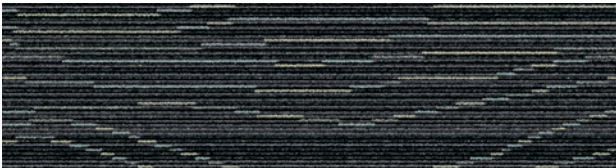


PRODUCT WINTER SUN. COLOR 105215 SUNRISE SUN. INSTALLED ASHLAR

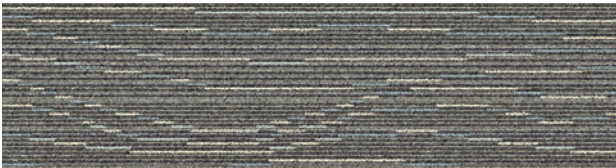
Snow Moon™ Colorline



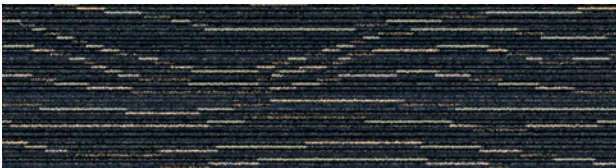
105326 DUSK MOON



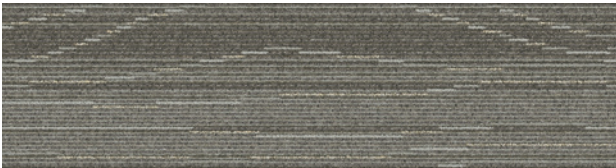
105327 EVENING MOON



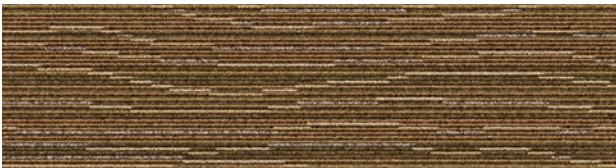
105328 DAWN MOON



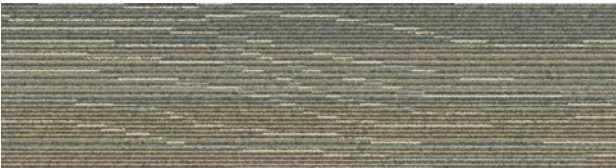
105329 SUNSET MOON



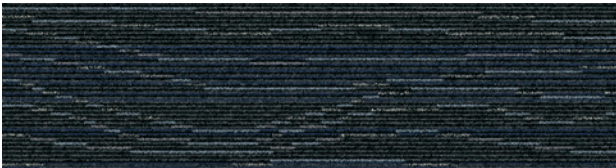
105330 NOON MOON



105331 SUNRISE MOON



105332 MORNING MOON



105333 MIDNIGHT MOON

Specifications

Modular, 25cm x 1m	13900
Yarn Manufacturer	Aquafil
Yarn System	100% Recycled Content Nylon
Color System	100% Solution Dyed
Construction	Tufted Textured Loop
Preservative Protection	Intersept®
Soil/Stain Protection	Protekt ² ®
Pile Thickness	0.073 in., 1.9 mm
Pile Density	6,904
Total Recycled Content	Up to 83%
Indoor Air Quality	CRI Green Label Plus #GLP0820

View the full product specification on [interface.com](https://www.interface.com)

Installation Methods



ASHLAR



HERRINGBONE

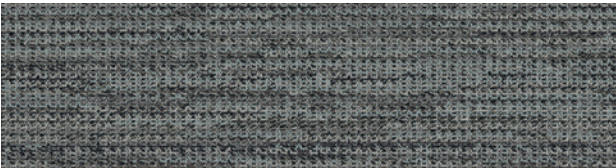


BROWSE IMAGES
ORDER SAMPLES

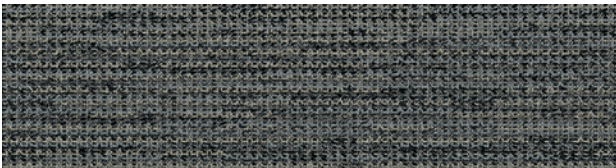


PRODUCT SNOW MOON COLOR 105326 DUSK MOON INSTALLED ASHLAR

Afternoon Light™ Colorline



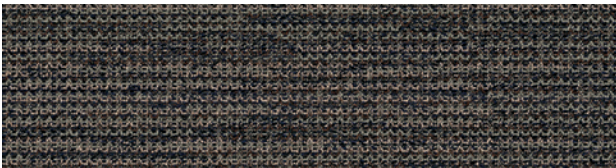
105294 DUSK LIGHT



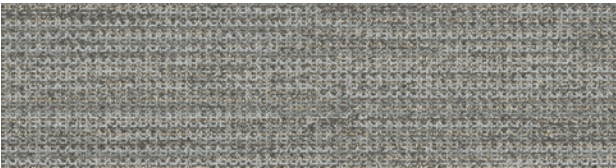
105295 EVENING LIGHT



105296 DAWN LIGHT



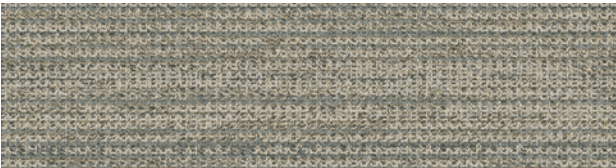
105297 SUNSET LIGHT



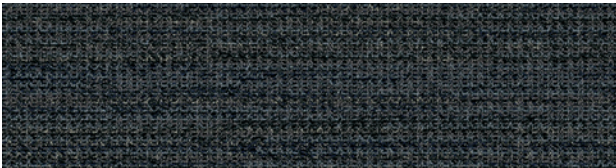
105298 NOON LIGHT



105299 SUNRISE LIGHT



105300 MORNING LIGHT



105301 MIDNIGHT LIGHT

Specifications

Modular, 25cm x 1m	13898
Yarn Manufacturer	Aquafil
Yarn System	100% Recycled Content Nylon
Color System	100% Solution Dyed
Construction	Tufted Textured Loop
Preservative Protection	Intersept®
Soil/Stain Protection	Protekt2®
Pile Thickness	0.082 in., 2.1 mm
Pile Density	7,902
Total Recycled Content	Up to 83%
Indoor Air Quality	CRI Green Label Plus #GLP0820

View the full product specification on [interface.com](#)

Installation Methods



ASHLAR



HERRINGBONE



BROWSE IMAGES
ORDER SAMPLES



PRODUCT AFTERNOON LIGHT COLOR 1062991 SUNRISE LIGHT INSTALLED ASHLAR





PRODUCT AFTERNOON LIGHT COLOR 105298 NOON LIGHT
PRODUCT SNOW MOON COLOR 105330 NOON MOON INSTALLED PATTERN BY TILE

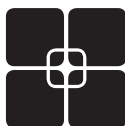
Why Our Modular Flooring?



Modular Flooring

Performance and flexibility.

Interface's standard backing systems set the industry standard for modular performance. Tiles stay on the floor with no upcurl, no tapping and no rippling effect, yet are easy to selectively replace. Our modular carpet is easier to handle than bulky roll carpet and produces an average of just 3-4% waste compared to roll carpet's average of 14%. And it installs seamlessly with our LVT, no transition strips needed.



TacTiles™

No glue installation. Our revolutionary TacTiles installation system eliminates the need for glue, adhering tiles securely together to form a floor that "floats" for greater flexibility, easier replacement and long-term performance. The result? Less mess, less waste and virtually no VOCs, not to mention an environmental footprint that is over 90% lower than that of traditional glue adhesives. TacTiles are approved for use on GlasBac™, CQuest™GB, Graphlar™ and Graphlex™.



Intersept®

Mold protection. Our proprietary preservative, Intersept, protects our modular carpet against mold growth and odor-causing bacteria—guaranteed. Intersept treated carpet, with proper maintenance, shows no mold or bacterial growth when tested per the ASTM E2471 Standard Test Method. Intersept is EPA approved for safe use in carpet, water insoluble and contains no halogens, heavy metals, phenols or formaldehyde. Intersept is standard in Interface carpet tile products backed with GlasBac, CQuestGB, ReadyBac™, and CushionBac Renew™.

Samples

Order samples at interface.com. You'll receive email order confirmations, 24/7 access to order status and more. Not near a computer? You can also request samples by calling one of the numbers below.

United States
1.877.605.1500

Canada
1.866.398.3192

Brazil
+ 5511.2196.0900

Latin America
+ 52.55.2791.6812

interface.com

Register at interface.com to:

- Browse products and order samples
- View carpet in a variety of room scenes
- Browse floor designs, change colors, view as a grid or in a room, download and share
- Check order status and inventory availability
- Sign up to get the latest information on Interface products and news

InterCircle Sample Return

Help us close the loop on the carpet sampling process. Through our InterCircle Sample Return program, sample materials stay out of the landfill and are re-used as samples until it is time to recycle them into new carpet. By reducing sample production material and diverting old materials from the landfill, we can reduce our overall environmental footprint.

Call 1.877.605.1500 (U.S.) or 1.866.398.3192 (Canada) to order a sample return bag with a prepaid return label.



ReEntry™

Recyclable. Through our ReEntry program, we reclaim all Interface carpet tile. The result? Carpet tile products with up to 85% total recycled content, including as much as 25% post-consumer content.



Sustainability Transparency

Transparency and certified sustainability leadership come standard on Interface products, including published ingredients in HPDs (Health Product Declarations) and published EPDs (Environmental Product Declarations), which are based on full life cycle assessment (LCA). And, Interface carpet products are certified to the NSF 140 Sustainable Carpet Assessment Standard. Additionally, Interface flooring and recommended adhesives are 3rd party certified for low VOC emissions in compliance with California Department of Public Health (CDPH) Standard Method v1.2–2017. Carpet products made in our US facilities are made with 99% renewable energy.



Third Party Verification

The flooring products that we sell, including carpet tile, are carbon neutral across their full product life cycle through our third party verified Carbon Neutral Floors™ program. To find out more, visit interface.com/carbonneutral



Environmental Product Declaration (EPD) –

A statement of product ingredients and environmental impacts over the entire life cycle of a product. A comprehensive life cycle assessment (LCA) is performed to ISO standards to develop an EPD, after which both the EPD and LCA must be third party verified.



Sustainable Assessment for Carpet – The only carpet sustainability standard in North America that evaluates the environmental impact of carpet for its entire lifecycle.



CRI Green Label Plus – An independent testing program that identifies carpet and adhesives with very low emissions of VOCs to help improve indoor air quality.



RECYCLED
Paper made from
recycled material
FSC® C009723



Printed on 50% post consumer waste (PCW) fiber manufactured using wind power.

All product specifications reflect averages derived from product sample testing, are subject to normal manufacturing and testing tolerances and inherent pattern variances, and may be changed without notice. For more information about these and other important attributes of the product(s) described herein, including recycled content and product warranty information, please see interface.com/disclaimer.

We have tried our very best to accurately represent product colors. However, due to the nature of printed materials, color of actual products may vary slightly. Please request a sample to see actual product color.

interface.com

United States Headquarters

1280 West Peachtree Street NW
Atlanta, GA 30309
1.800.634.6032

Canadian Headquarters

233 Lahr Drive
Belleville, ON K8N 5S2
1.800.267.2149 ext.52128

Brazilian Headquarters

Av. Das Nações Unidas 14261
25 andar, sala 25 -122, Brooklin Paulista
São Paulo 04578 - 000
Brasil
+ 5511.2196.0900

Latin American Headquarters

Montes Urales # 415 Piso 6
Lomas de Chapultepec
Miguel Hidalgo, CDMX
11000 Mexico
+ 52.55.2791.6812

CIM # IFS00760 11/2021



Climate change is undeniable. And reversible. Our mission is to prove it.
Join the #ClimateTakeBack and help create a climate fit for life.