



Equal Measure Collection

Interface®

Equal Measure™ Collection

Consider the cobblestone street: natural stones are selected for their variation and strength then placed in patterns and arcs that serve both the utility of the road and the beauty of it. The intersection of the man-made and nature-made is perfectly expressed.

The newest addition to our growing global category, Equal Measure is a collection of three textures that, just like the crossroads of two streets, moves in four directions. When placed in sequence with its companions, EM553™ connects to EM552™ on any of its four sides: end to end, side to side. The irregular geometric pattern seems to have been carved out of its plush finish. EM552 serves as the bridge tile for the collection, including a bit of each of the other patterns, one dissolving into the other. EM551™ is a simple, low-profile texture designed to quietly underscore your design. More energetic floors can be created when contrasting colors and textures are mixed in less obvious ways. We recommend both, in Equal Measure, of course.

Offered in our skinny plank format, Equal Measure is made with 100% recycled nylon made in part from reclaimed fishing nets. And when its useful life is through, it can be reclaimed for recycling through Interface's ReEntry® program.



PRODUCT EM551 COLOR 104559 PARK ST. PRODUCT EM552 COLOR 104567 PARK AVE.
PRODUCT EM553 COLOR 104575 PARK BLVD. INSTALLED ASHLAR





PRODUCT EM551 **COLOR** 104561 HILL ST. **PRODUCT EM552**
COLOR 104569 HILL AVE. **INSTALLED ASHLAR**





PRODUCT EM552 **COLOR** 104572 UNION AVE. **INSTALLED** ASHLAR
COLLECTION URBAN RETREAT™ **PRODUCT** UR202™ **COLOR** 102962 GRANITE **INSTALLED** MONOLITHIC





PRODUCT EM553 COLOR 104576 MAIN BLVD. INSTALLED ASHLAR
COLLECTION HUMAN NATURE™ PRODUCT HN830™ COLOR 104238 MAIZE



PRODUCT EM551 COLOR 104563 MARKET ST. INSTALLED HERRINGBONE

EM551™ Colorline



104558 COBBLESTONE ST.



104559 PARK ST.



104560 MAIN ST.



104561 HILL ST.



104562 BROAD ST.



104563 MARKET ST.



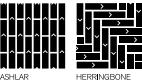
104564 UNION ST.



104565 OLDTOWN ST.

Specifications

Modular, 25cm x 1m	127760AK0H
Backing System	GlasBac®RE Tile
Yarn Manufacturer	Aquafil
Yarn System	100% Recycled Content Type 6 Nylon
Color System	100% Solution Dyed
Construction	Tufted Pattern Loop
Lifetime Antimicrobial	Intersept®
Soil/Stain Protection	Protekt2®
Pile Thickness	0.140 in., 3.6 mm
Pile Density	6,686
Total Recycled Content	80% (35% Post-Consumer)
Indoor Air Quality	CRI Green Label Plus #GLP0820





PRODUCT EM552 **COLOR** 104567 PARK AVE. **INSTALLED** ASHLAR

EM552™ Colorline



104566 COBBLESTONE AVE.



104567 PARK AVE.



104568 MAIN AVE.



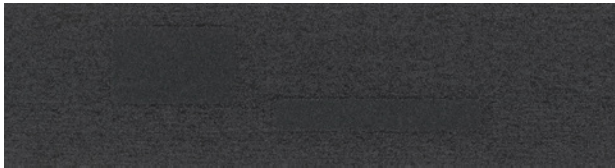
104569 HILL AVE.



104570 BROAD AVE.



104571 MARKET AVE.



104572 UNION AVE.



104573 OLDTOWN AVE.

Specifications

Modular, 25cm x 1m	127770AK0H
Backing System	GlasBac®RE Tile
Yarn Manufacturer	Aquafil
Yarn System	100% Recycled Content Type 6 Nylon
Color System	100% Solution Dyed
Construction	Tufted Sheared
Lifetime Antimicrobial	Intersept®
Soil/Stain Protection	Protekt2®
Pile Thickness	0.136 in., 3.5 mm
Pile Density	7,412
Total Recycled Content	81% (35% Post-Consumer)
Indoor Air Quality	CRI Green Label Plus #GLP0820



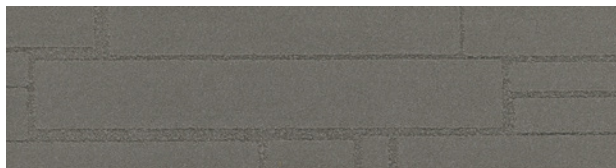
EM553™ Colorline



104574 COBBLESTONE BLVD.



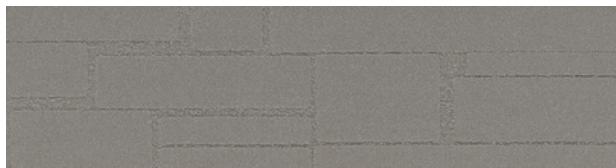
104575 PARK BLVD.



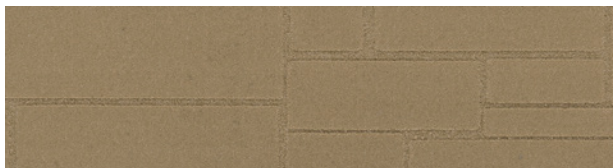
104576 MAIN BLVD.



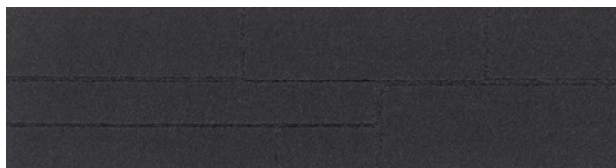
104577 HILL BLVD.



104578 BROAD BLVD.



104579 MARKET BLVD.



104580 UNION BLVD.



104581 OLDTOWN BLVD.

Specifications

Modular, 25cm x 1m	127780AK0H
Backing System	GlasBac®RE Tile
Yarn Manufacturer	Aquafil
Yarn System	100% Recycled Content Type 6 Nylon
Color System	100% Solution Dyed
Construction	Tufted Sheared
Lifetime Antimicrobial	Intersept®
Soil/Stain Protection	Protekt2®
Pile Thickness	0.182 in., 4.6 mm
Pile Density	7,319
Total Recycled Content	81% (35% Post-Consumer)
Indoor Air Quality	CRI Green Label Plus #GLP0820









PRODUCT EM553 **COLOR** 104576 MAIN BLVD. **COLLECTION** HUMAN NATURE **PRODUCT** HN810™ **COLOR** 104214 NICKEL
PRODUCT HN830 **COLOR** 104242 KIWI **INSTALLED** ASHLAR





PRODUCT EM552 **COLOR** 104566 COBBLESTONE AVE. **COLLECTION** HUMAN NATURE **PRODUCT** HN840™
COLOR 104226 SHALE **PRODUCT** HN850™ **COLOR** 104210 SHALE **INSTALLED** ASHLAR





PRODUCT EM552 COLOR 104570 BROAD AVE. INSTALLED ASHLAR





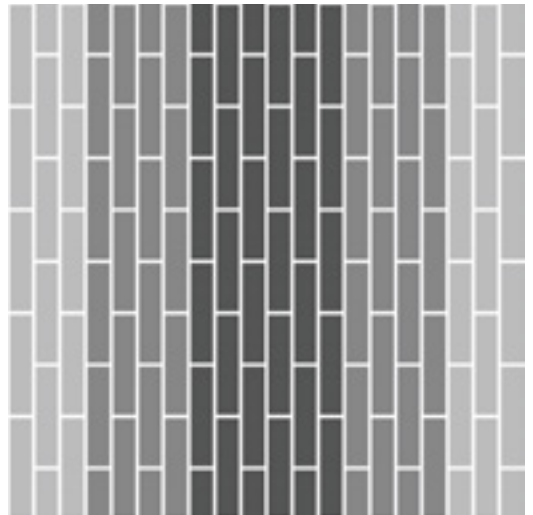
PRODUCT EM551 COLORS 104561 HILL ST., 104560 MAIN ST.
INSTALLED PATTERN BY TILE



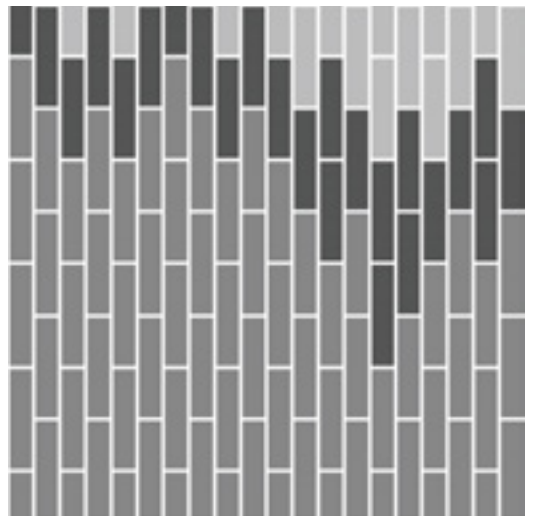


PRODUCT EM551 **COLOR** 104564 UNION **PRODUCT** EM553
COLOR 104580 UNION **INSTALLED** HERRINGBONE

Design Ideas Below are floor layouts showing how to create the design ideas shared in several of the images featured in this brochure.



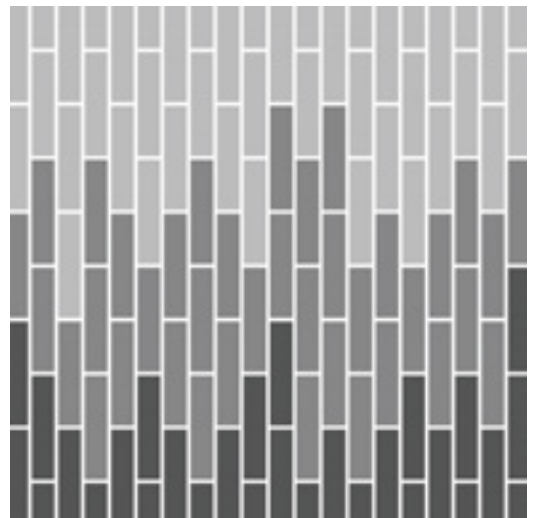
PRODUCT EM551 **COLOR** 104562 BROAD ST. **PRODUCT** EM552 **COLOR** 104570 BROAD AVE.
PRODUCT EM553 **COLOR** 104578 BROAD BLVD. **INSTALLED** ASHLAR



PRODUCT EM552 **COLOR** 104566 COBBLESTONE AVE. **COLLECTION** HUMAN NATURE **PRODUCT** HN840 **COLOR** 104226 SHALE
PRODUCT HN850 **COLOR** 104210 SHALE **INSTALLED** ASHLAR

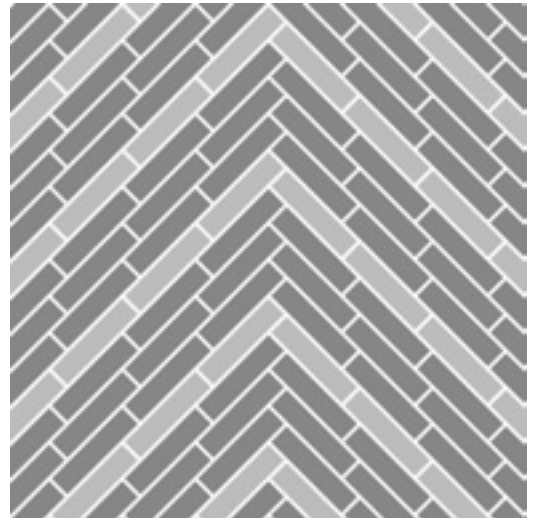


PRODUCT EM551 **COLOR** 104563 MARKET ST. **INSTALLED** HERRINGBONE

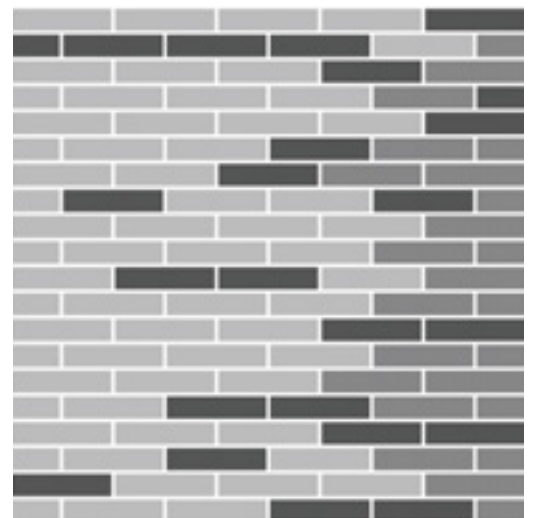
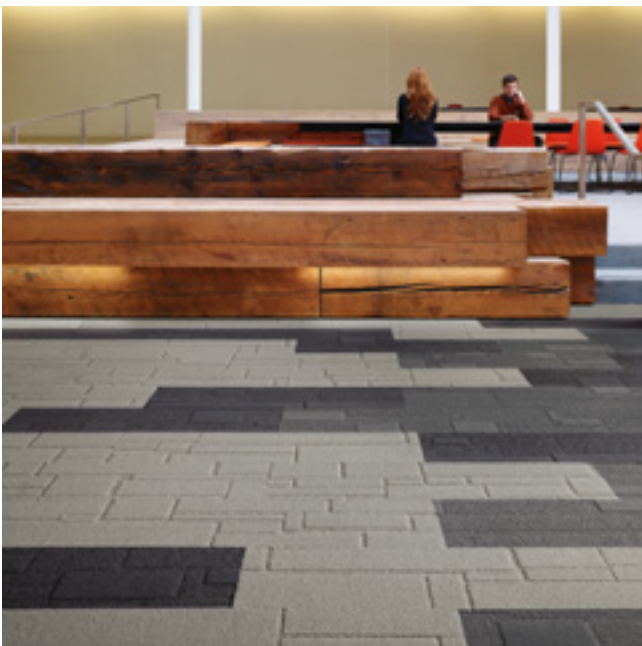


PRODUCT EM551 **COLOR** 104564 UNION ST. **PRODUCT** EM552 **COLOR** 104572 UNION AVE.
PRODUCT EM553 **COLOR** 104580 UNION BLVD. **INSTALLED** ASHLAR

Design Ideas Below are floor layouts showing how to create the design ideas shared in several of the images featured in this brochure.



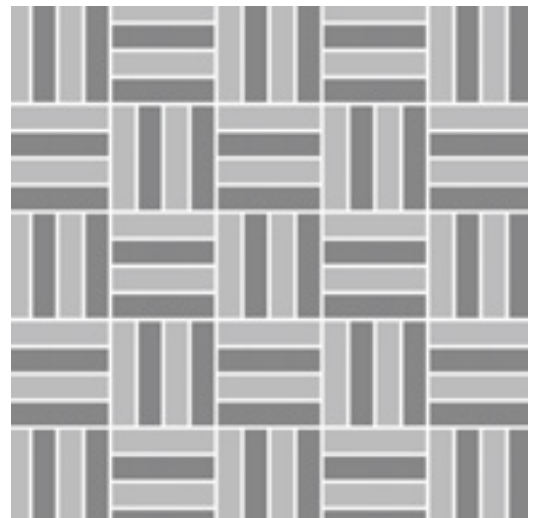
PRODUCT EM552 **COLOR** 104567 PARK AVE. **COLLECTION** HUMAN NATURE **PRODUCT** HN840 **COLOR** 104225 PUMICE
INSTALLED PATTERN BY TILE



PRODUCT EM552 **COLORS** 104572 UNION AVE., 104568 MAIN AVE.
PRODUCT EM553 **COLOR** 104581 OLDTOWN BLVD. **INSTALLED** ASHLAR



PRODUCT EM551 **COLOR** 104560 UNION ST. **PRODUCT** EM553 **COLOR** 104578 UNION BLVD.
INSTALLED HERRINGBONE



PRODUCT EM551 **COLORS** 104561 HILL ST., 104560 MAIN ST.
INSTALLED PATTERN BY TILE

Why Our Modular Carpet?



Modular Carpet Tile

Performance and Flexibility. Interface's modular carpet tile sets the industry standard for performance. Tiles are designed to stay on the floor with no upcurl, tapping or rippling. Our square and plank tiles are easier to handle, install and maintain. They install with just 3-4% waste – and as little as 1.5% for i2® non directional styles – compared to an average 14% for traditional roll carpet. And our i2 styles are mergeable so tiles from multiple dye lots will always blend, even when selectively replaced years later.

Samples

Order samples at www.interface.com. You'll receive email order confirmations, 24/7 access to order status and more. Not near a computer? You can also request samples by calling one of the numbers below.

United States 1.877.605.1500	Canada 1.866.398.3192
Brazil + 55 11 2196 0900	Latin America + 52 55 6395 5100



Cool Carpet™

The Low Carbon Option

Help stop climate change. ALL Interface modular carpet sold in North America is third party verified climate neutral Cool Carpet. We start by using low-carbon materials and manufacturing processes, then Cool Carpet zeros out all remaining greenhouse gas (GHG) emissions associated with the entire lifecycle of your carpet, from raw material extraction through use and recycling. And climate neutral Cool Carpet may be eligible for a USGBC or CaGBC LEED Innovation Credit.

www.interface.com

Register at www.interface.com to:

- Browse products and order samples
- View carpet in a variety of room scenes
- Use the Floors design tool to create floor layouts you can save and share.
- Use our LEED Calculator
- Check order status and inventory availability
- Sign up to get the latest information on Interface products and news



TacTiles®

No Glue Installation. Our revolutionary TacTiles installation system eliminates the need for glue, adhering tiles securely together to form a floor that "floats" for greater flexibility, easier replacement and long-term performance. The result? Less mess, less waste and virtually no VOCs, not to mention an environmental footprint that is over 90% lower than that of traditional glue adhesives.

InterCircle™ Sample Return

Help us close the loop on the carpet sampling process. Through our InterCircle Sample Return program, sample materials stay out of the landfill and are re-used as samples until it is time to recycle them into new carpet. By reducing sample production material and diverting old materials from the landfill, we can reduce our overall environmental footprint.

Call 1.877.605.1500 (U.S.) or 1.866.398.3192 (Canada) to order a sample return bag with a prepaid return label.

Third Party Certification

cool carpet™

Cool Carpet – Our third party verified carbon offset program zeroes out all greenhouse gas (GHG) emissions associated with the entire lifecycle of your carpet.



Environmental Product Declaration (EPD) – A statement of product ingredients and environmental impacts over the entire life cycle of a product. A comprehensive life cycle assessment (LCA) is performed to ISO standards to develop an EPD, after which both the EPD and LCA must be third party verified.



Sustainable Assessment for Carpet – The only carpet sustainability standard in North America that evaluates the environmental impact of carpet for its entire lifecycle.



CRI Green Label Plus – An independent testing program that identifies carpet and adhesives with very low emissions of VOCs to help improve indoor air quality.



Intersept®

Mold Protection. Our proprietary preservative, Intersept, protects our modular carpet against mold growth and odor-causing bacteria — guaranteed. Intersept treated carpet, with proper maintenance, shows no mold or bacterial growth when tested per the ASTM E2471 Standard Test Method. Intersept is EPA approved for safe use in carpet, water insoluble and contains no halogens, heavy metals, phenols or formaldehyde.



ReEntry®

Recyclable is Now a Reality. Through our ReEntry program and partnerships with our fiber suppliers and recycling centers throughout North America, separated Type 6 and 6,6 nylon are recycled into new 6 and 6,6 nylon, while separated GlasBac® and similar competitor backings are recycled into GlasBac®RE non-virgin PVC backing using our Cool Blue™ technology. The result? Products with up to 81% total recycled content, including as much as 35% post-consumer content.



Sustainable Choice

Environmental Responsibility. Interface was the industry's first to publish an EPD (Environmental Product Declaration), which evaluates consistent factors based on full lifecycle assessment (LCA). We now have published EPDs for more than 99% of our products globally.

In addition, all Interface products with GlasBacRE backing meet the Platinum level of the NSF/ANSI 140 Sustainable Assessment for Carpet. GlasBac or NexStep® backed products meet the Gold level. All may contribute toward a USGBC or CaGBC LEED Innovation Credit.

All product specifications reflect averages derived from product sample testing, are subject to normal manufacturing and testing tolerances and inherent pattern variances, and may be changed without notice. For more information about these and other important attributes of the product(s) described herein, including recycled content and product warranty information, please see www.interface.com/disclaimer.



RECYCLED
Paper made from
recycled material
FSC® C009723



PLEASE RECYCLE

Printed on 50% post consumer waste (PCW) fiber manufactured using wind power.

We have tried our very best to accurately represent product colors. However, due to the nature of printed materials, color of actual products may vary slightly. Please request a sample to see actual product color.

www.interface.com

United States Headquarters

1503 Orchard Hill Road
LaGrange, GA 30240
1.800.336.0225 ext.6511

Canadian Headquarters

233 Lahr Drive
Belleville, ON K8N 5S2
1.800.267.2149 ext.2128

Brazilian Headquarters

Rua Surubim, 577 - Conjuntos
73/74 7º Andar
04571-050 - São Paulo - SP
+ 55 11 2196 0900

Latin American Headquarters

Montes Urales # 415 Piso 6
Col. Lomas de Chapultepec
México City, D.F. 11000
Mexico
+ 52 55 6395 5100

CIM # IFS00690 06/2015



Mission Zero®

our promise to eliminate any
negative impact our company
may have on the environment
by the year 2020.