

# Earth II & Wind II

[www.interface.com](http://www.interface.com)

**United States Headquarters**

1503 Orchard Hill Road  
LaGrange, GA 30240  
1.800.336.0225 ext.56511

**Canadian Headquarters**

233 Lahr Drive  
Belleville, ON K8N 5S2  
1.800.267.2149 ext.52128

**Brazilian Headquarters**

Rua Surubim, 577 - Conjuntos  
73/74 7º Andar  
04571-050 - São Paulo - SP  
+ 55 11 2196 0900

**Latin American Headquarters**

Montes Urales # 415 Piso 6  
Col. Lomas de Chapultepec  
México City, D.F. 11000  
Mexico  
+ 52 55 6395 5100

09/2018



Climate change is undeniable. And reversible. Our mission is to prove it. Join the #ClimateTakeBack and help create a climate fit for life.

**Interface®**

## Earth™ II & Wind™ II

---

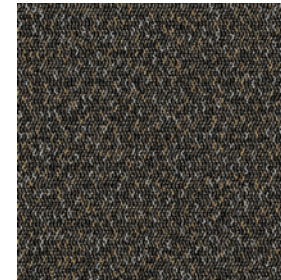
Earth II's subtle, geometric pattern and its larger scale companion, Wind II, share a nubby texture and a neutral color palette reflective of their elemental inspiration. Individually, each style offers a monolithic appearance. A combination of the two patterns creates just enough visual contrast for a more energetic aesthetic. As strong and adaptable as their style names suggest, both Earth II and Wind II offer an enduring foundation for any interior environment.







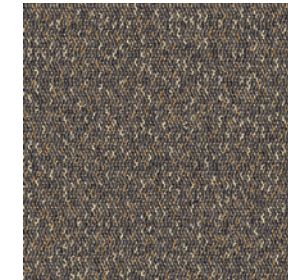
## Earth™ II Colorline



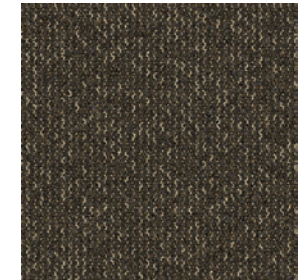
9238 DESERT



9240 TUNDRA



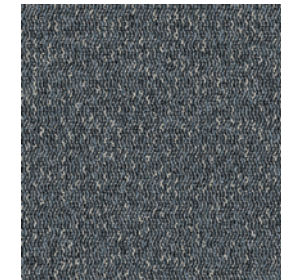
9241 PLATEAU



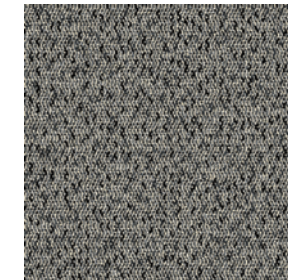
9242 PRAIRIE



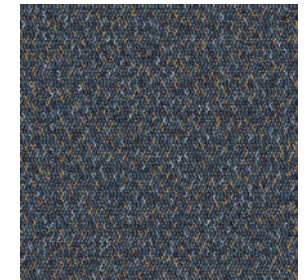
9243 VALLEY



9244 RIVERBED



9245 GORGE



9246 PAMPA



9249 FOOTHILLS

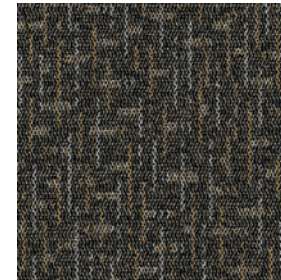
## Specifications

Modular, 50cm x 50cm	1467102500
Backing System	GlasBac® Tile
Yarn Manufacturer	Universal
Yarn System	Post-Consumer Content Type 6,6 Nylon
Color System	100% Solution Dyed
Construction	Tufted Textured Loop
Lifetime Antimicrobial	Intersept®
Soil/Stain Protection	Protekt®
Pile Thickness	0.114 in., 2.9 mm
Pile Density	5,368
Total Recycled Content	63-65%
Indoor Air Quality	CRI Green Label Plus# GLP0820





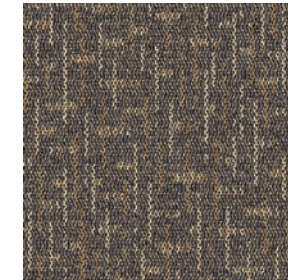
## Wind™ II Colorline



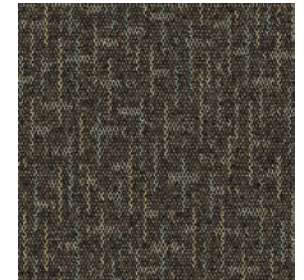
9226 DESERT



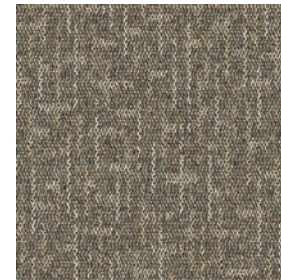
9228 TUNDRA



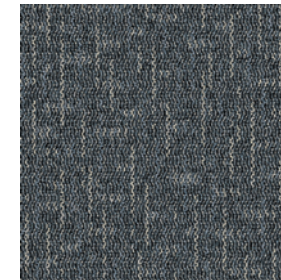
9229 PLATEAU



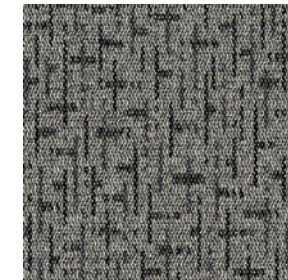
9230 PRAIRIE



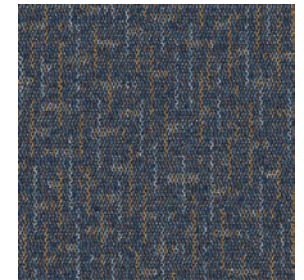
9231 VALLEY



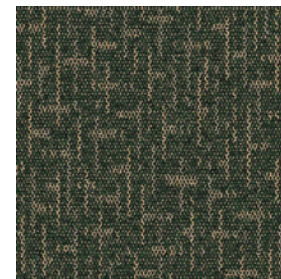
9232 RIVERBED



9233 GORGE



9234 PAMPA



9237 FOOTHILLS

## Specifications

Modular, 50cm x 50cm	1467002500
Backing System	GlasBac® Tile
Yarn Manufacturer	Universal
Yarn System	Post-Consumer Content Type 6,6 Nylon
Color System	100% Solution Dyed
Construction	Tufted Textured Loop
Lifetime Antimicrobial	Intersept®
Soil/Stain Protection	Protekt2®
Pile Thickness	0.114 in., 2.9 mm
Pile Density	5,684
Total Recycled Content	63-65%
Indoor Air Quality	CRI Green Label Plus# GLP0820



## Why Our Modular Flooring?



### Modular Flooring

*Performance and flexibility.* Interface's standard backing systems set the industry standard for modular performance. Tiles stay on the floor with no upcurl, no tapping and no rippling effect, yet are easy to selectively replace. Our modular carpet is easier to handle than bulky roll carpet and produces an average of just 3-4% waste compared to roll carpet's average of 14%. And it installs seamlessly with our LVT, no transition strips needed.



### Carbon Neutral Floors™

*Create a climate fit for life.* All Interface flooring sold globally is third party verified carbon neutral. We've taken a holistic approach to achieve carbon neutrality, first through reducing the carbon footprint of our products and then using carbon offsets for the remainder, including the emissions from raw materials, our manufacturing processes and product use to end of life.



### TacTiles®

*No glue installation.* Our revolutionary TacTiles installation system eliminates the need for glue, adhering tiles securely together to form a floor that "floats" for greater flexibility, easier replacement and long-term performance. The result? Less mess, less waste and virtually no VOCs, not to mention an environmental footprint that is over 90% lower than that of traditional glue adhesives.



### Intersept®

*Mold protection.* Our proprietary preservative, Intersept, protects our modular carpet against mold growth and odor-causing bacteria—guaranteed. Intersept treated carpet, with proper maintenance, shows no mold or bacterial growth when tested per the ASTM E2471 Standard Test Method. Intersept is EPA approved for safe use in carpet, water insoluble and contains no halogens, heavy metals, phenols or formaldehyde.



### ReEntry®

*Recyclable is now a reality.* Through our ReEntry program and partnerships with our fiber suppliers and recycling centers throughout North America, separated Type 6 and 6,6 nylon are recycled into new 6 and 6,6 nylon while separated GlasBac®, GlasBacRE and similar competitor backings are recycled into new GlasBacRE non-virgin PVC backing using our Cool Blue™ technology. The result? Products with up to 89% total recycled content, including as much as 27% post-consumer content.



### Sustainable Choice

*Environmental responsibility.* More than 95% of Interface products manufactured in the Americas carry the GreenCircle Certified Environmental Facts label, which has verified that standard Interface products are manufactured using 99% renewable energy and offer a minimum of 66% and 80% total recycled content when backed with GlasBac and GlasBacRE backing respectively.

Transparency and certified sustainability leadership come standard on all Interface products, including published ingredients in HPDs (Health Product Declarations) or Declare Labels. In addition, more than 99% of our products globally have a published EPD (Environmental Product Declaration), which evaluates consistent factors based on full life cycle assessment (LCA). And, all Interface products with GlasBacRE backing are certified to the Platinum level of the NSF/ANSI 140 Sustainable Assessment for Carpet. GlasBac backed products meet the Gold level. NSF/ANSI 140 certified products contribute toward a USGBC or CaGBC LEED credit.

### Samples

Order samples at [www.interface.com](http://www.interface.com). You'll receive email order confirmations, 24/7 access to order status and more. Not near a computer? You can also request samples by calling one of the numbers below.

United States 1.877.605.1500	Canada 1.866.398.3192
Brazil + 55 11 2196 0900	Latin America + 52 55 6395 5100

### [www.interface.com](http://www.interface.com)

Register at [www.interface.com](http://www.interface.com) to:

- Browse products and order samples
- View carpet in a variety of room scenes
- Browse floor designs, change colors, view as a grid or in a room, download and share
- Use our LEED Calculator
- Check order status and inventory availability
- Sign up to get the latest information on Interface products and news

### InterCircle™ Sample Return

Help us close the loop on the carpet sampling process. Through our InterCircle Sample Return program, sample materials stay out of the landfill and are re-used as samples until it is time to recycle them into new carpet. By reducing sample production material and diverting old materials from the landfill, we can reduce our overall environmental footprint.

Call 1.877.605.1500 (U.S.) or 1.866.398.3192 (Canada) to order a sample return bag with a prepaid return label.

## Third Party Certification



**Bureau Veritas** – All Interface flooring sold globally is third party verified carbon neutral.



**Environmental Product Declaration (EPD)** – A statement of product ingredients and environmental impacts over the entire life cycle of a product. A comprehensive life cycle assessment (LCA) is performed to ISO standards to develop an EPD, after which both the EPD and LCA must be third party verified.



**Sustainable Assessment for Carpet** – The only carpet sustainability standard in North America that evaluates the environmental impact of carpet for its entire lifecycle.



**CRI Green Label Plus** – An independent testing program that identifies carpet and adhesives with very low emissions of VOCs to help improve indoor air quality.

All product specifications reflect averages derived from product sample testing, are subject to normal manufacturing and testing tolerances and inherent pattern variances, and may be changed without notice. For more information about these and other important attributes of the product(s) described herein, including recycled content and product warranty information, please see [www.interface.com/disclaimer](http://www.interface.com/disclaimer).



Printed on 50% post consumer waste (PCW) fiber manufactured using wind power.



PLEASE RECYCLE

We have tried our very best to accurately represent product colors. However, due to the nature of printed materials, color of actual products may vary slightly. Please request a sample to see actual product color.