

Walk the Plank™, UR501™ Duo & Trio™ and OnLine™

www.interface.com

United States Headquarters

1503 Orchard Hill Road
LaGrange, GA 30240
1.800.336.0225 ext.6511

Canadian Headquarters

233 Lahr Drive
Belleville, ON K8N 5S2
1.800.267.2149 ext.2128

Latin American Headquarters

Edifício Igarassu
Rua Surubim, 577 - Conjuntos
73/74 7º Andar
04571-050 - São Paulo - SP
+ 55 11 2196 0900

CIM # IFS00622 06/2013



Mission Zero:
our promise to eliminate any
negative impact our company
may have on the environment
by the year 2020.

Interface®

An inspired tweak on the common carpet tile, our new 25 cm x 1 m format rolls out some new ideas about making pattern on the floor.

Installation patterns like herringbone, or one of your own invention, now have a distinctive scale and movement on the floor. A simple ashlar method is suddenly made elegant through longer, leaner lines and the elongated format creates a broadloom-like look across the floor. The possibilities grow exponentially when mingled with 50 cm squares and 50 cm x 1 m plank tiles.

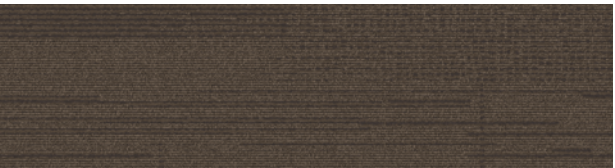
Collected on the following pages are five styles in this new format that we call the *skinny plank*.





PRODUCT DUO COLOR 103873 GRANITE PRODUCT TRIO COLOR 103881 STEEL/GRANITE INSTALLED ASHLAR

Duo™ Colorline



103867 BARK



103868 STRAW



103869 FLAX



103870 ASH



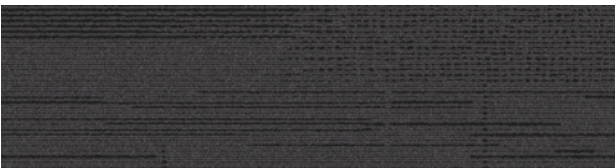
103871 SAGE



103872 STONE



103873 GRANITE



103874 CHARCOAL

Specifications

Modular, 25 cm x 1 m	124950AK00
Backing System	GlasBac® Tile
Yarn Manufacturer	Aquafil
Yarn System	100% Recycled Content Type 6 Nylon
Color System	100% Solution Dyed
Construction	Tufted Cut & Loop
Preservative Protection	Intersept®
Soil/Stain Protection	Protekt2®
Pile Thickness	0.159 in., 4.0 mm
Pile Density	5,660
Total Recycled Content	62%
Indoor Air Quality	CRI Green Label Plus #GLP0820



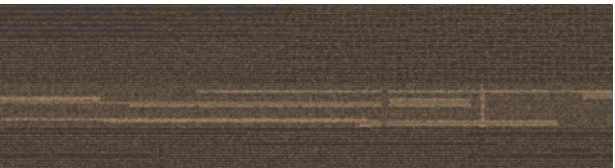
A perfect palette of neutrals inspired from the simplicity of undyed fibers like wool and linen. A texture that explores the nuance of pattern and movement and volume and void within a single color. A brush-stroke to highlight. All presented in a genius new format that literally extends the possibilities of design.

Duo & Trio capture all these elements at the heart of any classically designed space. Duo furnishes the pattern, palette and finish and Trio adds delight with a swath of accent in the same construction.



PRODUCT TRIO COLOR 103878 LINEN/ASH INSTALLED ASHLAR

Trio™ Colorline



103875 TAN/BARK



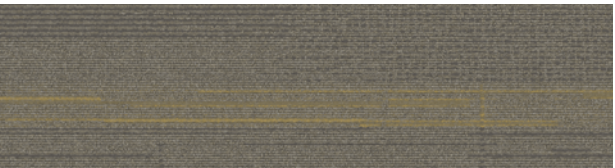
103876 SAND/STRAW



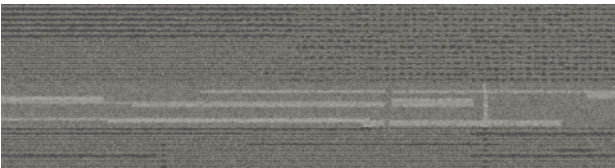
103877 SILVER/FLAX



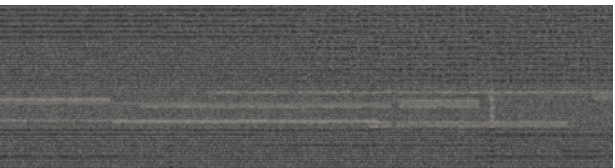
103878 LINEN/ASH



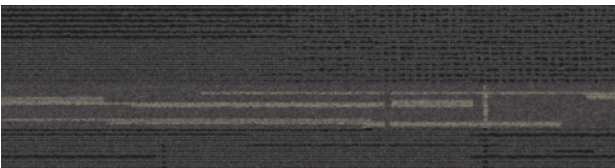
103879 MUSTARD/SAGE



103880 GRAY/STONE



103881 STEEL/GRANITE



103882 OLIVE/CHARCOAL

Specifications

Modular, 25 cm x 1 m	124960AK00
Backing System	GlasBac® Tile
Yarn Manufacturer	Aquafil
Yarn System	100% Recycled Content Type 6 Nylon
Color System	100% Solution Dyed
Construction	Tufted Cut & Loop
Preservative Protection	Intersept®
Soil/Stain Protection	Protekt2®
Pile Thickness	0.159 in., 4.0 mm
Pile Density	5,660
Total Recycled Content	62%
Indoor Air Quality	CRI Green Label Plus #GLP0820





On Line™

Specifications

Modular, 25 cm x 1 m	138700AK00
Backing System	GlasBac® Tile
Yarn Manufacturer	Aquafil
Yarn System	100% Recycled Content Type 6 Nylon
Color System	100% Solution Dyed
Construction	Tufted Textured Loop
Lifetime Antimicrobial	Intersept®
Soil/Stain Protection	Protekt2®
Pile Thickness	0.100 in., 2.5 mm
Pile Density	6,480
Total Recycled Content	60%
Indoor Air Quality	CRI Green Label Plus #GLP0820

On Line is the new graphic standard for the floor with its pure color and bold proportions. Go for color blocking — create a big splash or try colors that clash. Explore the fundamentals of flattery — earthy shades are the perfect companions to ground a brighter hue.

Vivid or subdued, On Line offers a broad spectrum of possibilities in service to your design and the identity you've imagined for your client.





103780 PEAT



103781 LOAM



103782 COFFEE



103783 MUSHROOM



103784 TOPAZ



103785 BISCUIT



103786 INK



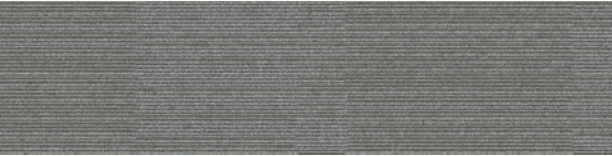
103787 PEWTER



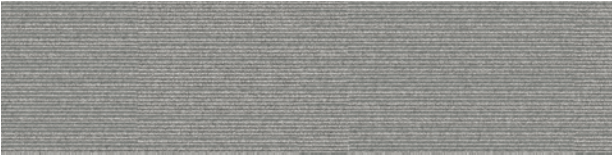
103788 PEPPER



103789 SAGE



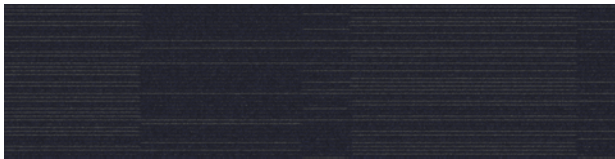
103790 STONE



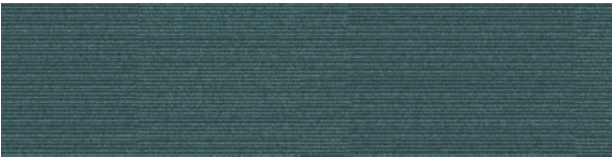
103791 CLOUD



103792 PEACOCK



103793 INDIGO



103794 LAGOON



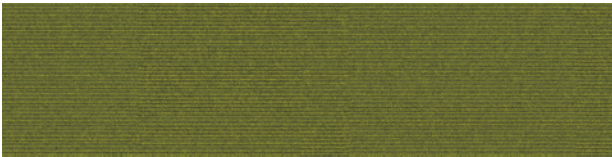
103795 OCEAN



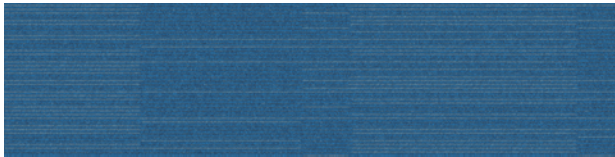
103796 FOREST



103797 AZURE



103798 LIME



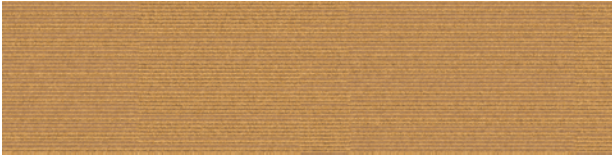
103799 LAPIS



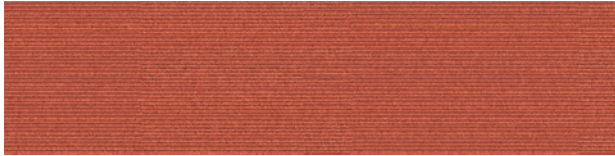
103800 MUSTARD



103801 POPPY



103802 CANARY



103803 MANDARIN

UR501™

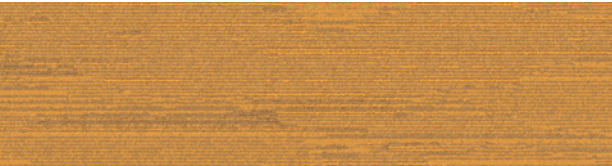


PRODUCT UR501 COLORS 103621 GRANITE, 103617 ASH, 103608 MOSS,
103618 STONE, 103616 NAVY, 103615 BLUE, 103612 IVY INSTALLED ASHLAR

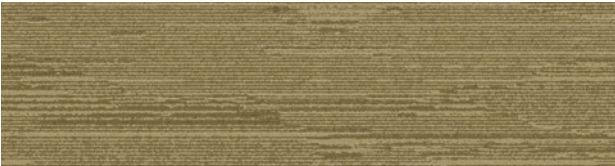


PRODUCT UR501 COLOR 103613 FLAX INSTALLED HERRINGBONE

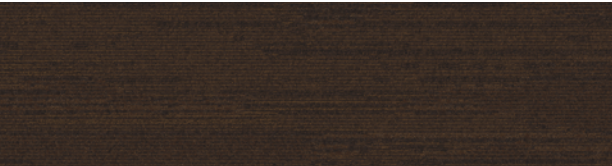
UR501™ Colorline



103607 GOLD



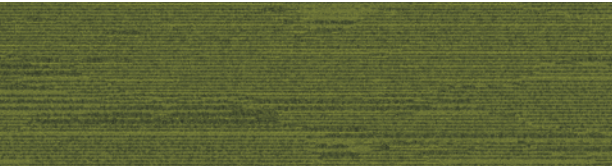
103608 MOSS



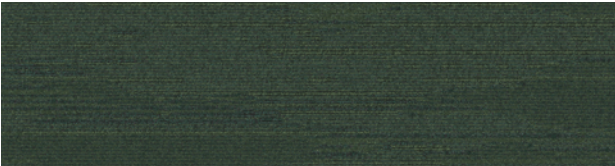
103609 BARK



103610 STRAW



103611 GRASS



103612 IVY



103613 FLAX



103614 SAGE



103615 BLUE



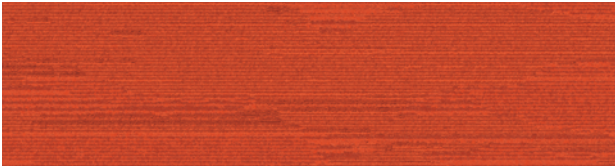
103616 NAVY



103617 ASH



103618 STONE



103619 ORANGE



103620 RED



103621 GRANITE



103622 CHARCOAL

Specifications

Modular, 25 cm x 1 m	127340AK0H
Backing System	GlasBac®RE Tile
Yarn Manufacturer	Aquafil
Yarn System	100% Recycled Content Type 6 Nylon
Color System	100% Solution Dyed
Construction	Tufted Sheared
Preservative Protection	Intersept®
Soil/Stain Protection	Protekt2®
Pile Thickness	0.146 in., 3.7 mm
Pile Density	6,164
Total Recycled Content	80% (35% Post-Consumer)
Indoor Air Quality	CRI Green Label Plus #GLP0820



The detailed texture of UR501 is reminiscent of lengths of rough-hewn hardwood, blending in beautifully with the earthy styles of the other Urban Retreat™ products. Presented in this inspired new format, UR501 draws deeper connections to the familiarity of a natural wood floor. And like any floor made from natural materials, each intricately unique tile combines with the others to compose a surprisingly singular plane.



Walk the Plank™

Specifications



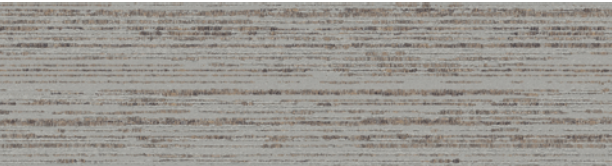
Modular, 25 cm x 1 m	126440AK00
Backing System	GlasBac® Tile
Yarn Manufacturer	Aquafil
Yarn System	100% Recycled Content Type 6 Nylon
Color System	100% Solution Dyed
Construction	Tufted Sheared
Preservative Protection	Intersept®
Soil/Stain Protection	Protekt2®
Pile Thickness	0.157 in., 4.0 mm
Pile Density	5,962
Total Recycled Content	62%
Indoor Air Quality	CRI Green Label Plus #GLP0820



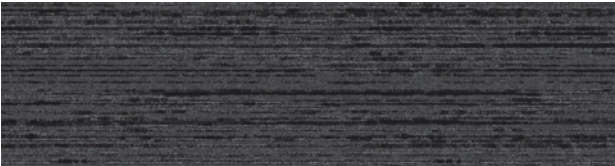
PRODUCT WALK THE PLANK COLOR 8764 MAPLE INSTALLED ASHLAR

Taking cues from our current love affair with repurposed materials, Walk the Plank makes proper reference to the eccentric qualities of old timbers with its deeply grooved grain and a bold range of values within each colorway. Evoking all the warmth and familiarity of an age-worn wooden floor, this clever shift in format is an instant classic.

Walk the Plank™ Colorline



8760 BEECH



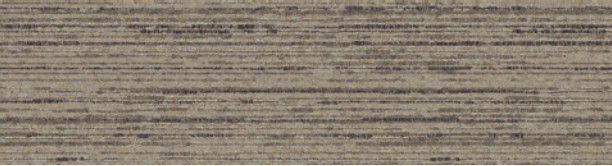
8761 SYCAMORE



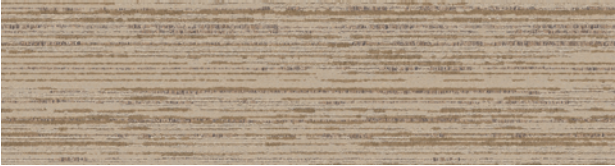
8762 CYPRUS



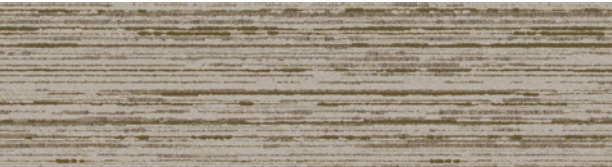
8763 WALNUT



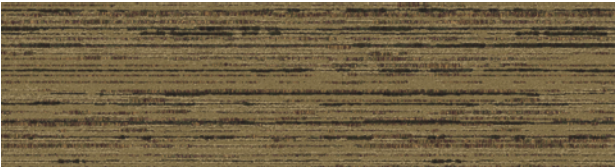
8764 MAPLE



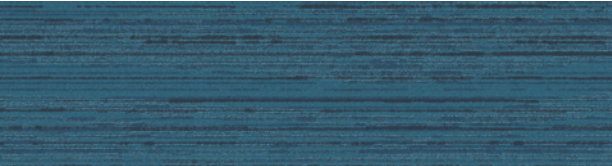
8765 POPLAR



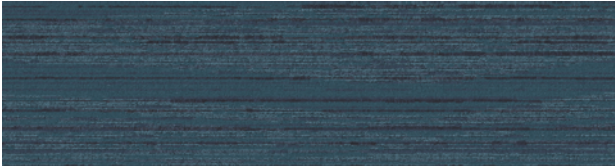
8766 GINKGO



8767 WILLOW



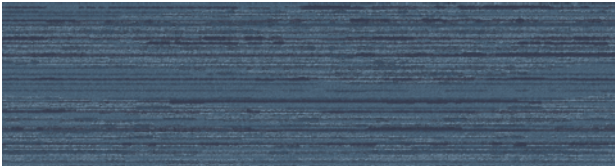
103945 SPRUCE



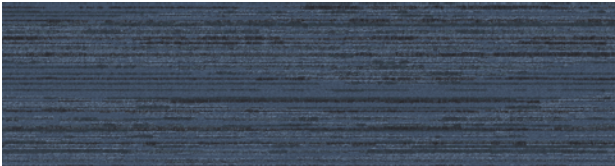
103946 JUNIPER



103947 HAWTHORN



103948 EUCALYPTUS



103949 BALSAM



103950 IRONWOOD



103951 ASH



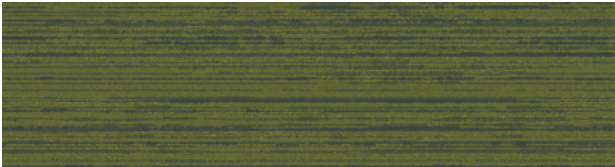
103952 HICKORY



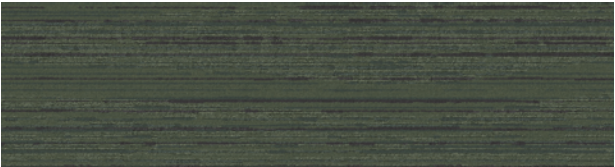
103953 BUCKEYE



103954 MIMOSA



103955 LAUREL



103956 MAGNOLIA



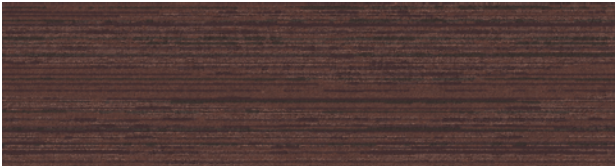
103957 DOGWOOD



103958 BIRCH

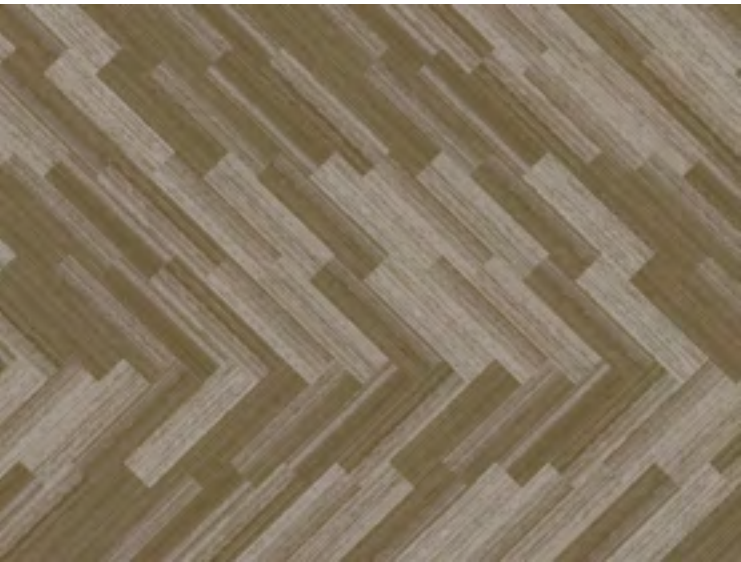


103959 CEDAR

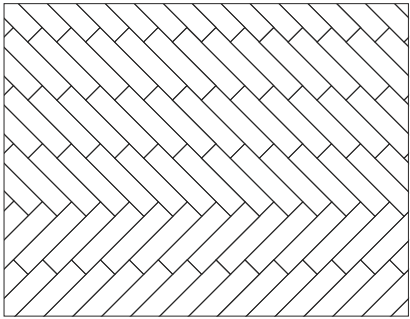


103960 SEQUOIA

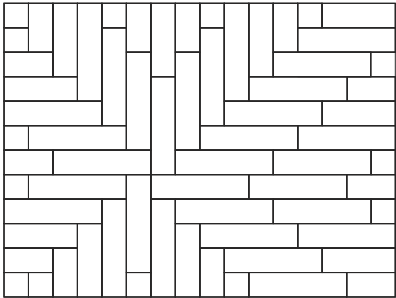
Design Ideas Use the pattern by tile layout suggestions below to create your own unique floor designs.



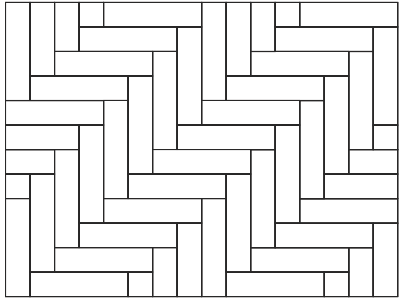
PRODUCT WALK THE PLANK COLOR 8766 GINKGO



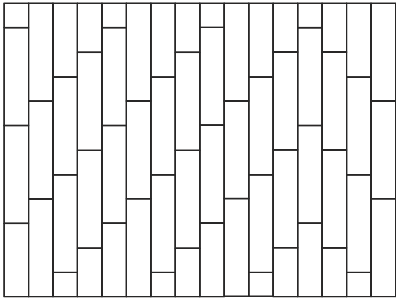
PRODUCT ON LINE COLORS 103789 SAGE, 103791 CLOUD, 103798 LIME



PRODUCT DUO COLOR 103871 SAGE PRODUCT TRIO COLOR 103879 MUSTARD/SAGE
PRODUCT ON LINE COLOR 103800 MUSTARD



PRODUCT UR501 COLORS 103610 STRAW, 103613 FLAX



Why Our Modular Carpet?



Modular Carpet
Performance and Flexibility. Interface's modular carpet tile sets the industry standard for performance. Tiles are designed to stay on the floor with no upcurl, tapping or rippling. Our square and plank tiles are easier to handle, install and maintain. They install with just 3-4% waste – and as little as 1.5% for i2® non directional styles – compared to an average 14% for traditional roll carpet. And our i2 styles are mergeable so tiles from multiple dye lots will always blend, even when selectively replaced years later.



Cool Carpet™
Help Stop Global Warming and Earn a LEED® Innovation Credit. ALL Interface modular carpet sold in North America is third party verified climate neutral Cool Carpet. Cool Carpet zeros out all greenhouse gas (GHG) emissions associated with the entire lifecycle of your carpet. And climate neutral verified Cool Carpet may be eligible for a USGBC or CaGBC LEED Innovation Credit.



TacTiles®
No Glue Installation. Our revolutionary TacTiles installation system eliminates the need for glue, adhering tiles securely together to form a floor that “floats” for greater flexibility, easier replacement and long-term performance. The result? Less mess, less waste and virtually no VOCs, not to mention an environmental footprint that is over 90% lower than that of traditional glue adhesives.



Intersept®
Mold Protection. Our proprietary preservative, Intersept, protects our modular carpet against mold growth and odor-causing bacteria — guaranteed. Intersept treated carpet, with proper maintenance, shows no mold or bacterial growth when tested per the ASTM E2471 Standard Test Method. Intersept is low in toxicity, water insoluble and contains no arsenic, heavy metals, phenols or formaldehyde.



ReEntry® 2.0
Recyclable is Now a Reality. Our ReEntry 2.0 program uses innovative technology that gives us the ability to cleanly separate the face fiber and backing of nearly any carpet type. Separated Type 6 and 6,6 nylon are recycled into new 6 and 6,6 nylon, while separated GlasBac® and similar competitor backings are recycled into new GlasBac®RE non-virgin PVC backing using our Cool Blue™ technology. The result? Products with up to 81% total recycled content, including as much as 35% post-consumer content.



Sustainable Choice
Environmental Responsibility. Interface was the industry's first to earn an EPD (Environmental Product Declaration), which evaluates consistent factors based on full lifecycle assessment (LCA). We achieved an EPD based on our Convert™ products and have now expanded our EPDs into four catagories covering more than 90% of our products.

In addition, all Interface products with GlasBacRE backing meet the Platinum level of the NSF/ ANSI 140 Sustainable Assessment for Carpet. GlasBac or NexStep® backed products meet the Gold level. All may contribute toward a USGBC or CaGBC LEED Innovation Credit.

Samples
Order samples at www.interface.com. You'll receive email order confirmations, 24/7 access to order status and more. Not near a computer? You can also request samples by calling one of the numbers below.

United States 1.877.605.1500	Canada 1.866.398.3192
Brazil + 55 11 2196 0902	Latin America + 55 11 2196 0900

www.interface.com
Register at www.interface.com to:

- Order samples
- View carpet in a variety of room scenes and even upload your own room
- Use our LEED Calculator
- Check order status and inventory availability
- Sign up to get the latest information on Interface products and news

InterCircle™ Sample Return
Help us close the loop on the carpet sampling process. Through our InterCircle Sample Return program, sample materials stay out of the landfill and are re-used as samples until it is time to recycle them into new carpet. By reducing sample production material and diverting old materials from the landfill, we can reduce our overall environmental footprint.

Call 1.877.605.1500 (U.S.) or 1.866.398.3192 (Canada) to order a sample return bag with a prepaid return label.

Third Party Certification



Cool Carpet – Our third party verified carbon offset program zeroes out all greenhouse gas (GHG) emissions associated with the entire lifecycle of your carpet.



Environmental Product Declaration (EPD) – A statement of product ingredients and environmental impacts over the entire life cycle of a product. A comprehensive life cycle assessment (LCA) is performed to ISO standards to develop an EPD, after which both the EPD and LCA must be third party verified.



Sustainable Assessment for Carpet – The only carpet sustainability standard in North America that evaluates the environmental impact of carpet for its entire lifecycle.



CRI Green Label Plus – An independent testing program that identifies carpet and adhesives with very low emissions of VOCs to help improve indoor air quality.

All product specifications reflect averages derived from product sample testing, are subject to normal manufacturing and testing tolerances and inherent pattern variances, and may be changed without notice. For more information about these and other important attributes of the product(s) described herein, including recycled content and product warranty information, please see www.interface.com/disclaimer.



Printed on 50% post consumer waste (PCW) fiber manufactured using wind power.

We have tried our very best to accurately represent product colors. However, due to the nature of printed materials, color of actual products may vary slightly. Please request a sample to see actual product color.