

Driftwood & Shiver Me Timbers

Interface®

In 2000, we introduced i2, a category of styles inspired by nature's floors. It opened our eyes to a new way to design a floor and has transformed the way the world viewed carpet tile ever since.

Complexity that is visually engaging, diversity that provides for mergeable dye lots and flexibility, and patterning that goes well beyond the edges of the tile - it was i2 that taught us the limitless possibilities of carpet tile.

We are introducing Driftwood to the i2 family. Offered in Skinny Planks™, Driftwood explores two color approaches, side by side. Half the colorline stays close to a neutral range and the other half blends in more colorful yarns. The geometry of the Driftwood pattern is energetic, with a fractal effect that seems to shift directions even when installed in a simple ashlar method. Also included is a selection from Shiver Me Timbers™, creating a set of complimentary styles to compose a truly unique floor.

Perhaps the greatest lesson we've learned from nature is that waste equals food, so of course, Driftwood is made from 100% recycled content nylon.







PRODUCT DRIFTWOOD COLORS 104852 LEYLAND, 104850 ALDER
PRODUCT SHIVER ME TIMBERS COLOR 103922 SYCAMORE INSTALLED ASHLAR





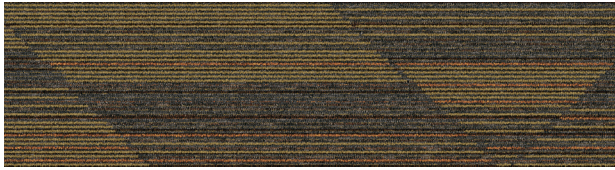
PRODUCT DRIFTWOOD COLORS 104849 SORREL, 104861 ELM, INSTALLED PATTERN BY TILE



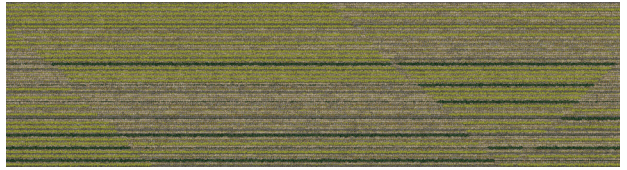


PRODUCT DRIFTWOOD COLOR 104848 REDWOOD INSTALLED HERRINGBONE

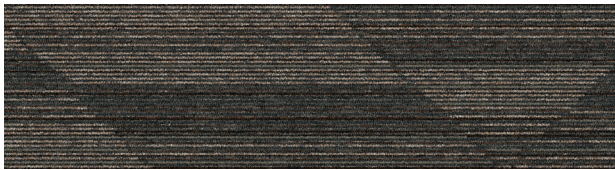
Driftwood™ Colorline The tiles below represent Driftwood's overall color scheme—with the following spreads illustrating the broad variation within each color group.



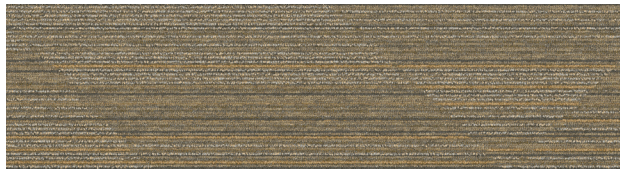
104846 MAHOGANY



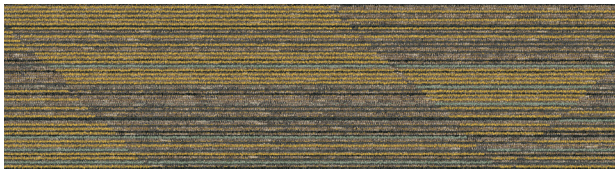
104847 PINE



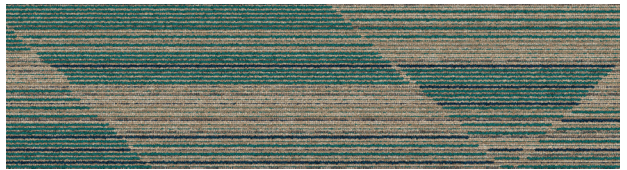
104848 REDWOOD



104849 SORREL



104850 ALDER



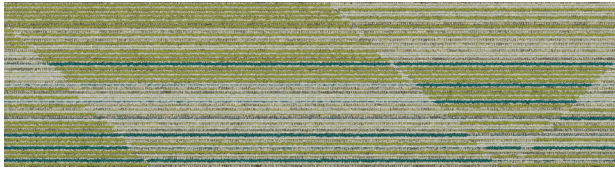
104851 OAK



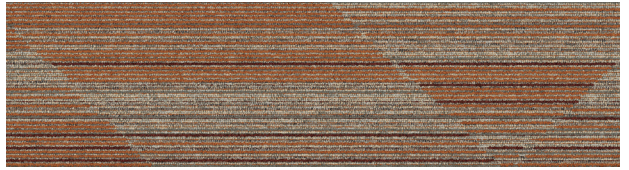
104852 LEYLAND



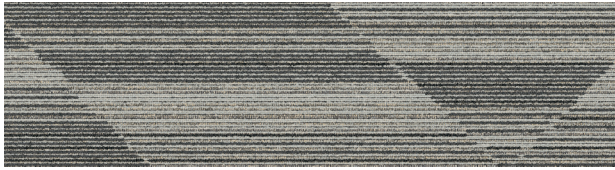
104853 HAZELNUT



104854 PALM



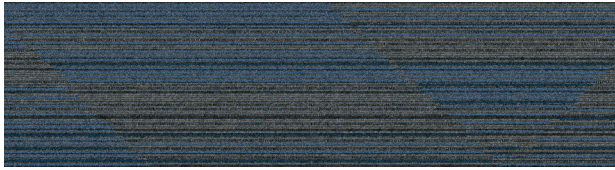
104855 ASPEN



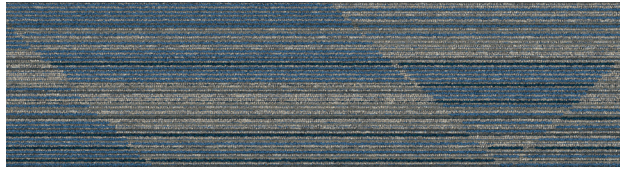
104856 LINDEN



104857 PECAN



104858 TEAK



104859 SWEETGUM



104860 CHESTNUT



104861 ELM

Specifications

Modular, 25cm x 1m	138940AK00
Backing System	GlasBac® Tile
Yarn Manufacturer	Aquafil
Yarn System	100% Recycled Content Nylon
Color System	100% Solution Dyed
Construction	Tufted Textured Loop
Lifetime Antimicrobial	Intersept®
Soil/Stain Protection	Protekt2®
Pile Thickness	0.095 in., 2.4 mm
Pile Density	6,821
Total Recycled Content	76%
Indoor Air Quality	CRI Green Label Plus #GLP0820



Driftwood Colorline The colorline grids below are all shown in a 2m x 2m ashlar installation to illustrate the broad variation within each color of Driftwood.



104846 MAHOGANY



104847 PINE



104848 REDWOOD



104849 SORREL



104850 ALDER



104851 OAK



104852 LEYLAND



104853 HAZELNUT



104854 PALM



104855 ASPEN



104856 LINDEN



104857 PECAN



104858 TEAK



104859 SWEETGUM



104860 CHESTNUT



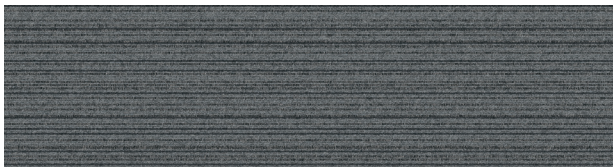
104861 ELM



Shiver Me Timbers™ Colorline



103921 BEECH



103922 SYCAMORE



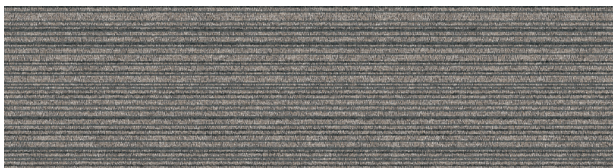
103923 CYPRUS



103925 MAPLE



103935 ASH



103936 HICKORY



103937 BUCKEYE



103941 DOGWOOD

Specifications

Modular, 25cm x 1m	127410AK00
Backing System	GlasBac® Tile
Yarn Manufacturer	Aquafil
Yarn System	100% Recycled Content Nylon
Color System	100% Solution Dyed
Construction	Tufted Tip-Sheared
Lifetime Antimicrobial	Intersept®
Soil/Stain Protection	Protekt2®
Pile Thickness	0.071 in., 1.8 mm
Pile Density	9,127
Total Recycled Content	76%
Indoor Air Quality	CRI Green Label Plus #GLP0820



View full colorline at [Interface.com](https://www.interface.com)



i2® is undoubtedly one of our smartest and simplest innovations yet. It's smart because its mergeable dye lots minimize the need for attic stock and make selective replacement seamless.

And simple? We took our cue from nature, which designs organically without matching patterns or colors. Think of a natural forest and the various species of trees--different shapes, different colors, but still beautiful. Likewise, our i2 tiles vary in shape and color within one style and colorway so they blend, not match. Tiles work together even when purchased years apart. What a simple concept and a smart investment for your floor!

All product specifications reflect averages derived from product sample testing, are subject to normal manufacturing and testing tolerances and inherent pattern variances, and may be changed without notice. For more information about these and other important attributes of the product(s) described herein, including recycled content and product warranty information, please see www.interface.com/disclaimer.



Why Our Modular Carpet?



Modular Flooring

Performance and flexibility. Interface's standard backing systems set the industry standard for modular performance. Tiles stay on the floor with no upcurl, no tapping and no rippling effect, yet are easy to selectively replace. Our modular carpet is easier to handle than bulky roll carpet and produces an average of just 3-4% waste compared to roll carpet's average of 14%. And it installs seamlessly with our LVT, no transition strips needed.



Carbon Neutral Floors™

Create a climate fit for life. All Interface flooring sold globally is third party verified carbon neutral. We've taken a holistic approach to achieve carbon neutrality, first through reducing the carbon footprint of our products and then using carbon offsets for the remainder, including the emissions from raw materials, our manufacturing processes and product use to end of life.



TacTiles™

No glue installation. Our revolutionary TacTiles installation system eliminates the need for glue, adhering tiles securely together to form a floor that "floats" for greater flexibility, easier replacement and long-term performance. The result? Less mess, less waste and virtually no VOCs, not to mention an environmental footprint that is over 90% lower than that of traditional glue adhesives.

Samples

Order samples at www.interface.com. You'll receive email order confirmations, 24/7 access to order status and more. Not near a computer? You can also request samples by calling one of the numbers below.

United States	Canada
1.877.605.1500	1.866.398.3192
Brazil	Latin America
+ 55 11 2196 0900	+ 52 55 6395 5100

www.interface.com

Register at www.interface.com to:

- Browse products and order samples
- View carpet in a variety of room scenes
- Browse floor designs, change colors, view as a grid or in a room, download and share
- Use our LEED Calculator
- Check order status and inventory availability
- Sign up to get the latest information on Interface products and news

InterCircle™ Sample Return

Help us close the loop on the carpet sampling process. Through our InterCircle Sample Return program, sample materials stay out of the landfill and are re-used as samples until it is time to recycle them into new carpet. By reducing sample production material and diverting old materials from the landfill, we can reduce our overall environmental footprint.

Call 1.877.605.1500 (U.S.) or 1.866.398.3192 (Canada) to order a sample return bag with a prepaid return label.

Third Party Certification



Bureau Veritas – All Interface flooring sold globally is third party verified carbon neutral.



Environmental Product Declaration (EPD) – A statement of product ingredients and environmental impacts over the entire life cycle of a product. A comprehensive life cycle assessment (LCA) is performed to ISO standards to develop an EPD, after which both the EPD and LCA must be third party verified.



Sustainable Assessment for Carpet – The only carpet sustainability standard in North America that evaluates the environmental impact of carpet for its entire lifecycle.



CRI Green Label Plus – An independent testing program that identifies carpet and adhesives with very low emissions of VOCs to help improve indoor air quality.

www.interface.com

United States Headquarters

1280 West Peachtree Street NW
Atlanta, GA 30309
1.800.634.6032

Canadian Headquarters

233 Lahr Drive
Belleville, ON K8N 5S2
1.800.267.2149 ext. 52128

Brazilian Headquarters

Rua Surubim, 577 - Conjuntos
73/74 7º Andar
04571-050 - São Paulo - SP
+ 55 11 2196 0900

Latin American Headquarters

Montes Urales # 415 Piso 6
Col. Lomas de Chapultepec
México City, D.F. 11000
Mexico
+ 52 55 6395 5100

05/2020



Climate change is undeniable. And reversible. Our mission is to prove it.
Join the #ClimateTakeBack and help create a climate fit for life.