

Driftwood & Shiver Me Timbers

www.interface.com

United States Headquarters

1503 Orchard Hill Road
LaGrange, GA 30240
1.800.336.0225 ext. 56511

Canadian Headquarters

233 Lahr Drive
Belleville, ON K8N 5S2
1.800.267.2149 ext. 52128

Brazilian Headquarters

Rua Surubim, 577 - Conjuntos
73/74 7º Andar
04571-050 - São Paulo - SP
+ 55 11 2196 0900

Latin American Headquarters

Montes Urales # 415 Piso 6
Col. Lomas de Chapultepec
México City, D.F. 11000
Mexico
+ 52 55 6395 5100

CIM # IFS00726 04/2016



Mission Zero®
our promise to eliminate any
negative impact our company
may have on the environment
by the year 2020.

Interface®

In 2000, we introduced i2, a category of styles inspired by nature's floors. It opened our eyes to a new way to design a floor and has transformed the way the world viewed carpet tile ever since.

Complexity that is visually engaging, diversity that provides for mergeable dye lots and flexibility, and patterning that goes well beyond the edges of the tile - it was i2 that taught us the limitless possibilities of carpet tile.

We are introducing Driftwood to the i2 family. Offered in Skinny Planks™, Driftwood explores two color approaches, side by side. Half the colorline stays close to a neutral range and the other half blends in more colorful yarns. The geometry of the Driftwood pattern is energetic, with a fractal effect that seems to shift directions even when installed in a simple ashlar method. Also included is a selection from Shiver Me Timbers™, creating a set of complimentary styles to compose a truly unique floor.

Perhaps the greatest lesson we've learned from nature is that waste equals food, so of course, Driftwood is made from 100% recycled content nylon.









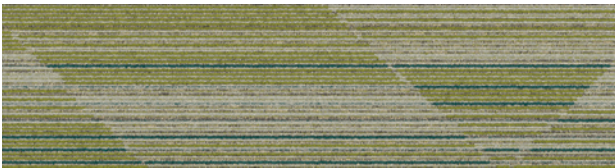
Driftwood™ Colorline The tiles below represent Driftwood's overall color scheme—with the following spreads illustrating the broad variation within each color group.



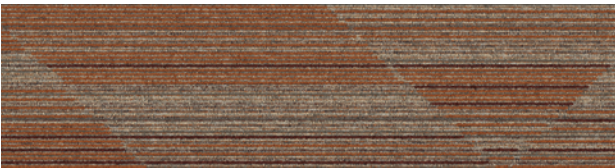
104846 MAHOGANY



104847 PINE



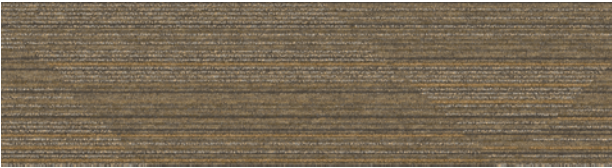
104854 PALM



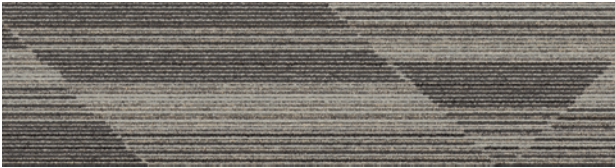
104855 ASPEN



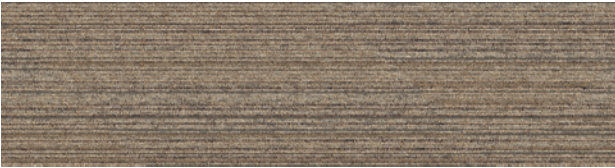
104848 REDWOOD



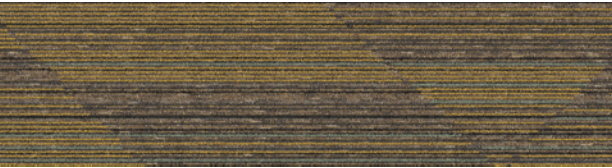
104849 SORREL



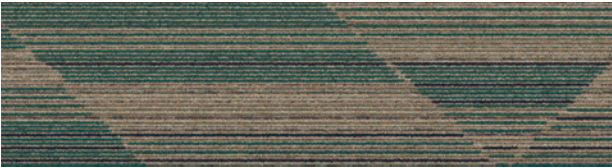
104856 LINDEN



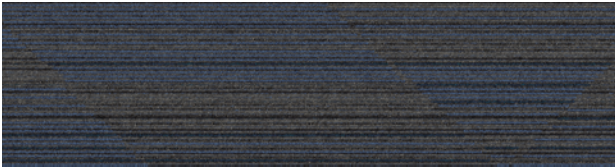
104857 PECAN



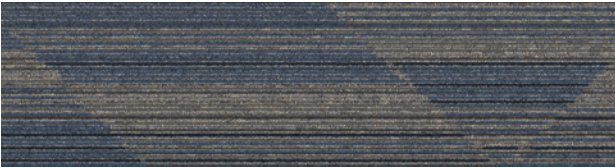
104850 ALDER



104851 OAK



104858 TEAK



104859 SWEETGUM



104852 LEYLAND



104853 HAZELNUT



104860 CHESTNUT



104861 ELM

Specifications

Modular, 25cm x 1m	138940AK00
Backing System	GlasBac® Tile
Yarn Manufacturer	Aquafil
Yarn System	100% Recycled Content Type 6 Nylon
Color System	100% Solution Dyed
Construction	Tufted Textured Loop
Lifetime Antimicrobial	Intersept®
Soil/Stain Protection	Protekt2®
Pile Thickness	0.095 in., 2.4 mm
Pile Density	6,821
Total Recycled Content	71%
Indoor Air Quality	CRI Green Label Plus #GLP0820



Driftwood Colorline

The colorline grids below are all shown in a 2m x 2m ashlar installation to illustrate the broad variation within each color of Driftwood.



104846 MAHOGANY



104847 PINE



104850 ALDER



104851 OAK



104848 REDWOOD



104849 SORREL



104852 LEYLAND



104853 HAZELNUT



104854 PALM



104855 ASPEN



104858 TEAK



104859 SWEETGUM



104856 LINDEN



104857 PECAN



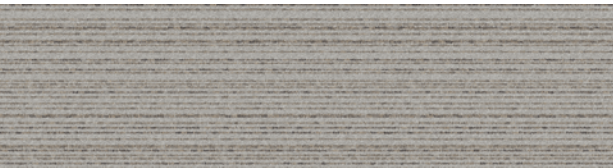
104860 CHESTNUT



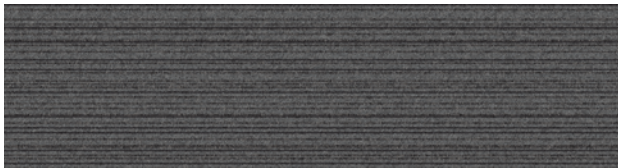
104861 ELM



Shiver Me Timbers™ Colorline



103921 BEECH



103922 SYCAMORE



103923 CYPRUS



103925 MAPLE



103935 ASH



103936 HICKORY



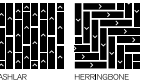
103937 BUCKEYE



103941 DOGWOOD

Specifications

Modular, 25cm x 1m	127410AK00
Backing System	GlasBac® Tile
Yarn Manufacturer	Aquafil
Yarn System	100% Recycled Content Type 6 Nylon
Color System	100% Solution Dyed
Construction	Tufted Tip-Sheared
Lifetime Antimicrobial	Intersept®
Soil/Stain Protection	Protekt2®
Pile Thickness	0.071 in., 1.8 mm
Pile Density	9,127
Total Recycled Content	71%
Indoor Air Quality	CRI Green Label Plus #GLP0820





i2® is undoubtedly one of our smartest and simplest innovations yet. It's smart because its mergeable dye lots minimize the need for attic stock and make selective replacement seamless.

And simple? We took our cue from nature, which designs organically without matching patterns or colors. Think of a natural forest and the various species of trees--different shapes, different colors, but still beautiful. Likewise, our i2 tiles vary in shape and color within one style and colorway so they blend, not match. Tiles work together even when purchased years apart. What a simple concept and a smart investment for your floor!

All product specifications reflect averages derived from product sample testing, are subject to normal manufacturing and testing tolerances and inherent pattern variances, and may be changed without notice. For more information about these and other important attributes of the product(s) described herein, including recycled content and product warranty information, please see www.interface.com/disclaimer.



Why Our Modular Carpet?



Modular Carpet Tile

Performance and Flexibility. Interface's standard backing systems set the industry standard for modular performance. Tiles stay on the floor with no upcurl, no tapping and no rippling effect, yet are easy to selectively replace. Our modular carpet is also easier to handle, install and maintain than bulky roll carpet. And, it installs with less waste so you save time and money.



Cool Floor™

The Low Carbon Option. Help stop climate change. ALL Interface modular flooring sold in North America is third party verified climate neutral Cool Floor. We start by using low-carbon materials and manufacturing processes, then Cool Floor zeros out all remaining greenhouse gas (GHG) emissions associated with the entire life cycle of your flooring, from raw material extraction through use and recycling.



TacTiles®

No Glue Installation. Our revolutionary TacTiles installation system eliminates the need for glue, adhering tiles securely together to form a floor that "floats" for greater flexibility, easier replacement and long-term performance. The result? Less mess, less waste and virtually no VOCs, not to mention an environmental footprint that is over 90% lower than that of traditional glue adhesives.



Intersept®

Mold Protection. Our proprietary preservative, Intersept, protects our modular carpet against mold growth and odor-causing bacteria — guaranteed. Intersept treated carpet, with proper maintenance, shows no mold or bacterial growth when tested per the ASTM E2471 Standard Test Method. Intersept is EPA approved for safe use in carpet, water insoluble and contains no halogens, heavy metals, phenols or formaldehyde.



ReEntry®

Recyclable is Now a Reality. Through our ReEntry program and partnerships with our fiber suppliers and recycling centers throughout North America, separated Type 6 and 6,6 nylon are recycled into new 6 and 6,6 nylon, while separated GlasBac®, GlasBacRE and similar competitor backings are recycled into new GlasBacRE non-virgin PVC backing using our Cool Blue™ technology. The result? Products with up to 89% total recycled content, including as much as 27% post-consumer content.



Sustainable Choice

Environmental Responsibility. Interface was the industry's first to publish an EPD (Environmental Product Declaration), which evaluates consistent factors based on full lifecycle assessment (LCA). We now have published EPDs for more than 99% of our products globally.

In addition, all Interface products with GlasBacRE backing meet the Platinum level of the NSF/ANSI 140 Sustainable Assessment for Carpet. GlasBac or NexStep® backed products meet the Gold level. All may contribute toward a USGBC or CaGBC LEED Innovation Credit.

Third Party Certification

cool floor™

Cool Floor – Our third party verified carbon offset program zeroes out all greenhouse gas (GHG) emissions associated with the entire life cycle of your flooring.



Environmental Product Declaration (EPD) – A statement of product ingredients and environmental impacts over the entire life cycle of a product. A comprehensive life cycle assessment (LCA) is performed to ISO standards to develop an EPD, after which both the EPD and LCA must be third party verified.



Sustainable Assessment for Carpet – The only carpet sustainability standard in North America that evaluates the environmental impact of carpet for its entire lifecycle.



CRI Green Label Plus – An independent testing program that identifies carpet and adhesives with very low emissions of VOCs to help improve indoor air quality.