



Dressed Lines Collection

Accent Hour
Angular Times
Comes Around
Goes Around
Positive Spin
Simple Does It

Interface®

Design that defies time

Whoever said 'out with the old, in with the new' got it half right. Good design comes. And then it goes. Great design pays its dues. We know which camp Dressed Lines™ belongs in. So will you.

Six designs. Eight colorways. And all the ideas in your head. Bring swagger to the design classics, minus the history lesson.







interface.com

PRODUCT COMES AROUND COLOR OAT INSTALLED ASHLAR



CARPET PRODUCT SIMPLE DOES IT COLOR OLIVE INSTALLED MONOLITHIC
LVT PRODUCT ON GRAIN COLOR HONEYED OAK INSTALLED ASHLAR





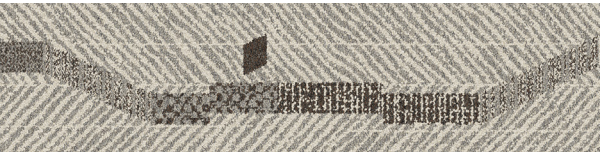
interface.com

PRODUCT ACCENT HOUR COLOR OAT INSTALLED ASHLAR

Accent Hour™ Color Range



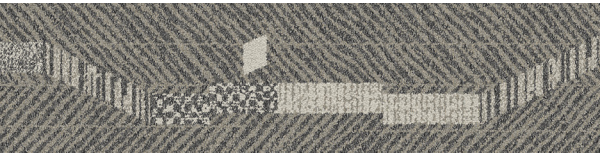
108490 TAN



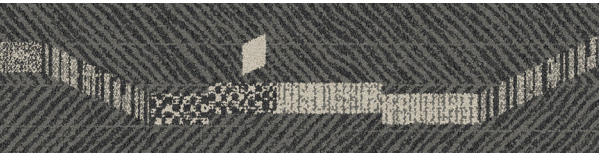
108491 SHELL



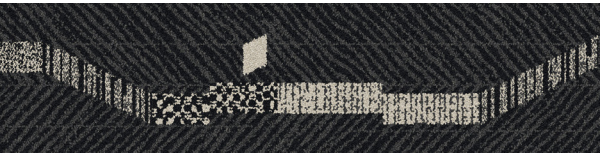
108492 OAT



108493 NATURAL



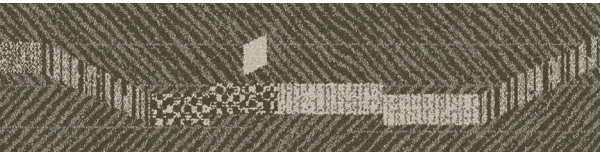
108494 CHARCOAL



108495 EBONY



108496 NAVY



108497 OLIVE

Specifications

Modular, 25 cm x 1 m	14091
Yarn Manufacturer	Aquafil
Yarn System	100% Recycled Content Nylon
Dye Method	100% Solution Dyed
Construction	Engaged Tufted Pattern Loop
Preservative Protection	Intersept®
Soil/Stain Protection	Protekt ² ™
Pile Thickness	0.112 in, 2.8 mm
Pile Density	8,679 oz/yd ³
Total Recycled Content	71%
Indoor Air Quality	CRI Green Label Plus #GLP0820

View the full product specification on [interface.com](https://www.interface.com)

Installation Methods



ASHLAR

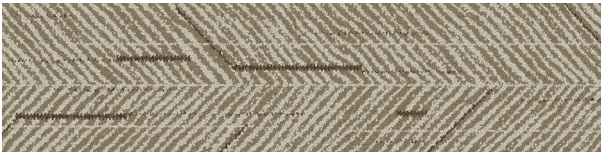


HERRINGBONE

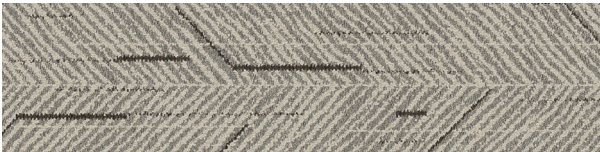


BROWSE IMAGES
ORDER SAMPLES

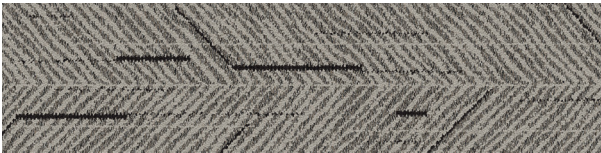
Angular Times™ Color Range



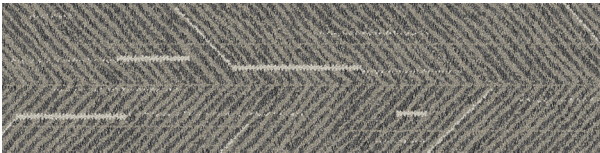
108498 TAN



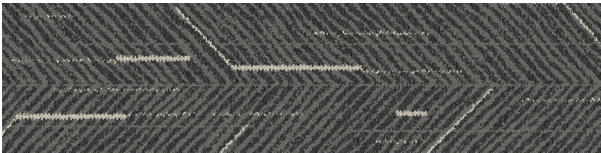
108499 SHELL



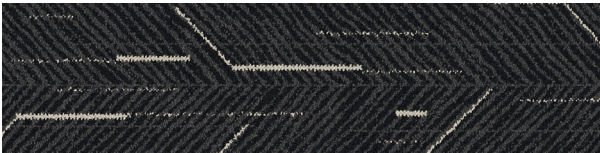
108500 OAT



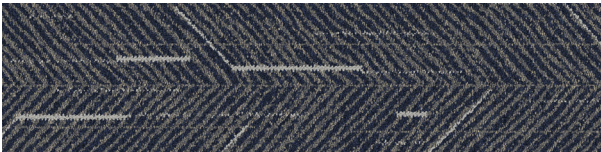
108501 NATURAL



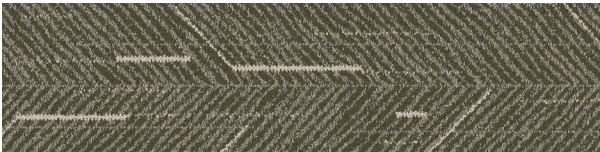
108502 CHARCOAL



108503 EBONY



108504 NAVY



108505 OLIVE

Specifications

Modular, 25 cm x 1 m	14092
Yarn Manufacturer	Aquafil
Yarn System	100% Recycled Content Nylon
Dye Method	100% Solution Dyed
Construction	Engaged Tufted Pattern Loop
Preservative Protection	Intersept®
Soil/Stain Protection	Protekt ² ™
Pile Thickness	0.114 in, 2.9 mm
Pile Density	8,211 oz/yd³
Total Recycled Content	71%
Indoor Air Quality	CRI Green Label Plus #GLP0820

View the full product specification on [interface.com](#)

Installation Methods



ASHLAR



HERRINGBONE



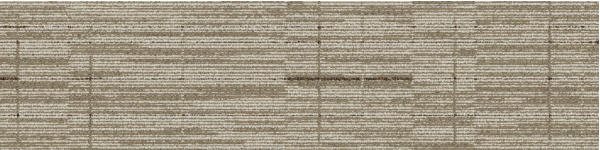
BROWSE IMAGES
ORDER SAMPLES



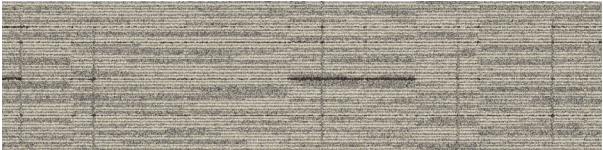
PRODUCT ANGULAR TIMES · COLOR OLIVE · INSTALLED ASHLAR



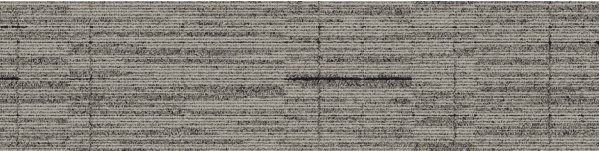
Comes Around™ Color Range



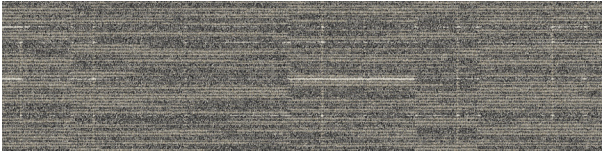
108514 TAN



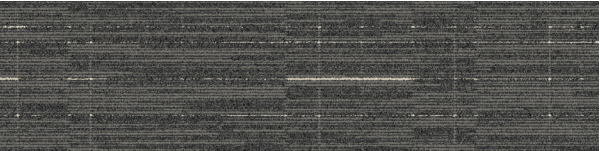
108515 SHELL



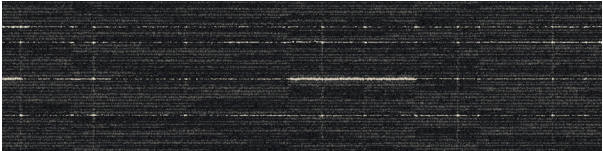
108516 OAT



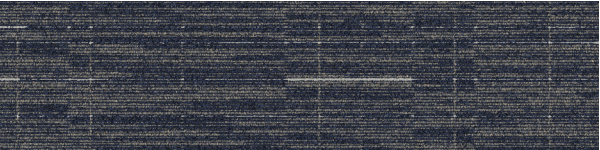
108517 NATURAL



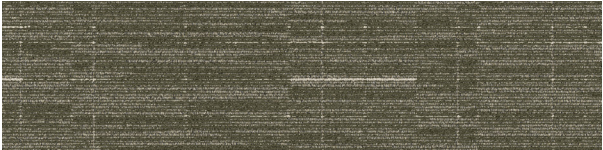
108518 CHARCOAL



108519 EBONY



108520 NAVY



108521 OLIVE

Specifications

Modular, 25 cm x 1 m	14094
Yarn Manufacturer	Aquafil
Yarn System	100% Recycled Content Nylon
Dye Method	100% Solution Dyed
Construction	Tufted Pattern Loop
Preservative Protection	Intersept®
Soil/Stain Protection	Protekt ² ™
Pile Thickness	0.105 in, 2.7 mm
Pile Density	6,171 oz/yd³
Total Recycled Content	68%
Indoor Air Quality	CRI Green Label Plus #GLP0820

View the full product specification on [interface.com](#)

Installation Methods



ASHLAR

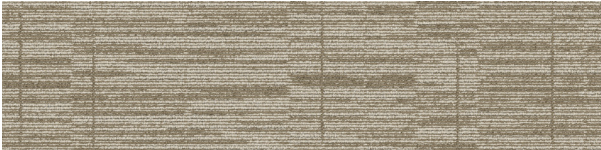


HERRINGBONE

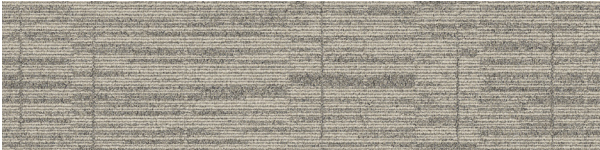


BROWSE IMAGES
ORDER SAMPLES

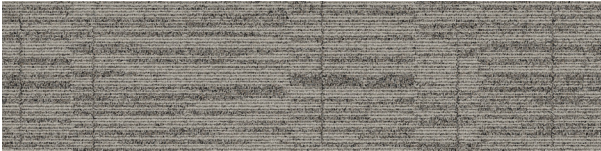
Goes Around™ Color Range



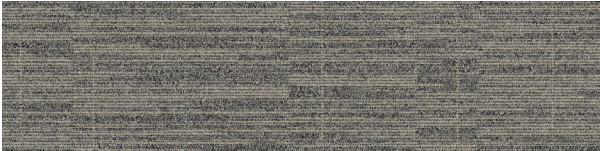
108522 TAN



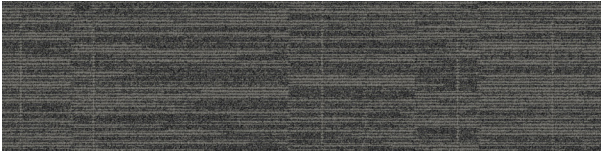
108523 SHELL



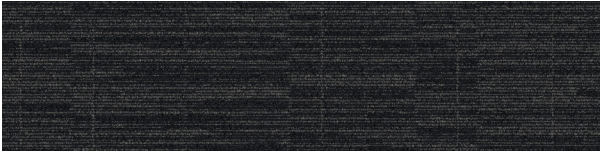
108524 OAT



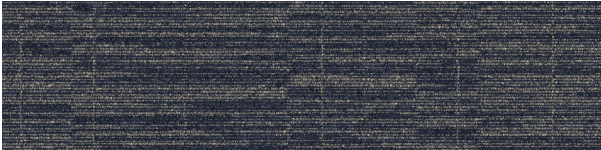
108525 NATURAL



108526 CHARCOAL



108527 EBONY



108528 NAVY



108529 OLIVE

Specifications

Modular, 25 cm x 1 m	14095
Yarn Manufacturer	Aquafil
Yarn System	100% Recycled Content Nylon
Dye Method	100% Solution Dyed
Construction	Tufted Pattern Loop
Preservative Protection	Intersept®
Soil/Stain Protection	Protekt ¹² ™
Pile Thickness	0.114 in, 2.9 mm
Pile Density	5,684 oz/yd³
Total Recycled Content	71%
Indoor Air Quality	CRI Green Label Plus #GLP0820

View the full product specification on [interface.com](#)

Installation Methods



ASHLAR



HERRINGBONE



BROWSE IMAGES
ORDER SAMPLES



PRODUCT GOES AROUND COLOR CHARCOAL INSTALLED ASHLAR



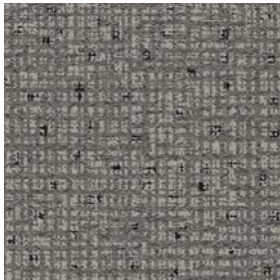
Positive Spin™ Color Range



108506 TAN



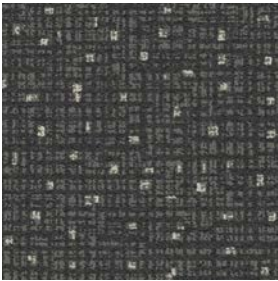
108507 SHELL



108508 OAT



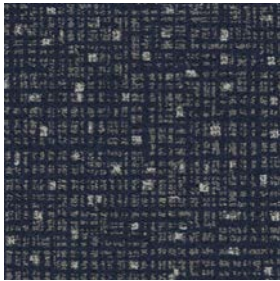
108509 NATURAL



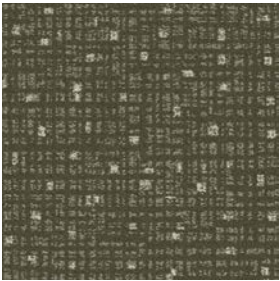
108510 CHARCOAL



108511 EBONY



108512 NAVY



108513 OLIVE

Specifications

Modular, 50 cm x 50 cm	14093
Yarn Manufacturer	Aquafil
Yarn System	100% Recycled Content Nylon
Dye Method	100% Solution Dyed
Construction	Engaged Tufted Pattern Loop
Preservative Protection	Intersept®
Soil/Stain Protection	Protekt ² ™
Pile Thickness	0.119 in, 3.0 mm
Pile Density	7,865 oz/yd³
Total Recycled Content	71%
Indoor Air Quality	CRI Green Label Plus #GLP0820

View the full product specification on [interface.com](https://www.interface.com)

Installation Method



MONOLITHIC

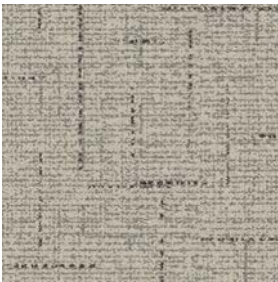


BROWSE IMAGES
ORDER SAMPLES

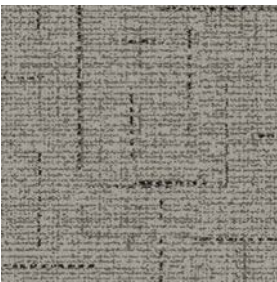
Simple Does It™ Color Range



108482 TAN



108483 SHELL



108484 OAT



108485 NATURAL



108486 CHARCOAL



108487 EBONY



108488 NAVY



108489 OLIVE

Specifications

Modular, 50 cm x 50 cm	14090
Yarn Manufacturer	Aquafil
Yarn System	100% Recycled Content Nylon
Dye Method	100% Solution Dyed
Construction	Engaged Tufted Pattern Loop
Preservative Protection	Intersept®
Soil/Stain Protection	Protekt ² ™
Pile Thickness	0.105 in, 2.7 mm
Pile Density	9,257 oz/yd³
Total Recycled Content	71%
Indoor Air Quality	CRI Green Label Plus #GLP0820

View the full product specification on [interface.com](#)

Installation Method



MONOLITHIC



BROWSE IMAGES
ORDER SAMPLES



PRODUCT SIMPLE DOES IT **COLOR** CHARCOAL **INSTALLED** MONOLITHIC

Why Our Modular Flooring?



Modular Flooring
Performance and flexibility. Interface's standard backing systems set the industry standard for modular performance. Tiles stay on the floor with no upcurl, no taping and no rippling effect, yet are easy to selectively replace. Our modular carpet is easier to handle than bulky roll carpet and produces an average of just 3-4% waste compared to roll carpet's average of 14%. And it installs seamlessly with our LVT, no transition strips needed.



TacTiles™
No glue installation. Our revolutionary TacTiles installation system eliminates the need for glue, adhering tiles securely together to form a floor that “floats” for greater flexibility, easier replacement and long-term performance. The result? Less mess, less waste and virtually no VOCs, not to mention an environmental footprint that is over 90% lower than that of traditional glue adhesives. TacTiles are approved for use on GlasBac™, CQuest™GB, CQuest™Bio and CQuest™BioX.



Intersept®
Mold protection. Our proprietary preservative, Intersept, protects our modular carpet against mold growth and odor-causing bacteria—guaranteed. Intersept treated carpet, with proper maintenance, shows no mold or bacterial growth when tested per the ASTM E2471 Standard Test Method. Intersept is EPA approved for safe use in carpet, water insoluble and contains no halogens, heavy metals, phenols or formaldehyde. Intersept is standard in Interface carpet tile products backed with GlasBac, CQuestGB, ReadyBac™ and CushionBac Renew™.



Environmental Product Declaration (EPD)
A statement of product ingredients and environmental impacts over the entire life cycle of a product. A comprehensive life cycle assessment (LCA) is performed to ISO standards to develop an EPD, after which both the EPD and LCA must be third party verified.



Health Product Declaration (HPD)
A transparency tool for evaluating whether a product supports Green Chemistry. As part of our work on Health and Materials, Interface continuously reduces the environmental and health impacts of our products through elimination of materials of concern.



ReEntry™
Recyclable. Through our ReEntry program we reclaim and recycle our carpet tile and Sound Choice™ LVT. ReEntry is the only third party certified recycling system among North American flooring manufacturers.



Sustainability Transparency
Transparency and certified sustainability leadership come standard on Interface products. We enlist outside partners to help us evaluate the entire product life cycle and reduce the environmental and human health impact of our flooring. And, carpet products made in our US facilities are made with 99% renewable energy.



CRI Green Label Plus
An independent testing program that identifies carpet and adhesives with very low emissions of VOCs to help improve indoor air quality.



NSF 140 Sustainable Carpet Assessment
The only carpet sustainability standard in North America that evaluates the environmental impact of carpet for its entire life cycle.

📍 **Samples**

Register and order samples at [interface.com](https://www.interface.com). Not near a computer? You can also request samples by calling one of the numbers below.

United States
1.877.605.1500

Canada
1.866.398.3192

interface.com

- Do more on [interface.com](https://www.interface.com)
- Browse products and order samples
 - Save and share favorites
 - See images of products in a variety of room scenes
 - Browse floor designs, change colors, upload your own image, download and share
 - Get full specifications, sustainability certifications and more
 - Check order status and inventory availability
 - Sign up to get the latest information on Interface products and news

InterCircle Sample Return

Help us close the loop on the carpet sampling process. Through our InterCircle Sample Return program, sample materials stay out of the landfill and are re-used as samples until it is time to recycle them into new carpet. By reducing sample production material and diverting old materials from the landfill, we can reduce our overall environmental footprint.

Call 1.877.605.1500 (U.S.) or 1.866.398.3192 (Canada) to order a sample return bag with a prepaid return label.

We have tried our very best to accurately represent product colors. However, due to the nature of printed materials, color of actual products may vary slightly. Please request a sample to see actual product color.

All product specifications reflect averages derived from product sample testing, are subject to normal manufacturing and testing tolerances and inherent pattern variances, and may be changed without notice. For more information about these and other important attributes of the product(s) described herein, including recycled content and product warranty information, please see [interface.com/disclaimer](https://www.interface.com/disclaimer).



Printed on 50% post consumer waste (PCW)
fiber manufactured using wind power.

interface.com

United States Headquarters

1280 West Peachtree Street NW
Atlanta, GA 30309
1.800.634.6032

Canadian Headquarters

233 Lahr Drive
Belleville, ON K8N 5S2
1.800.267.2149 ext. 52128

CIM# IFS00975 06/2025