



Printed on 50% post consumer waste (PCW) fiber manufactured using wind power.

interface.com

United States Headquarters

1280 West Peachtree Street NW
Atlanta, GA 30309
1.800.634.6032

Canadian Headquarters

233 Lahr Drive
Belleville, ON K8N 5S2
1.800.267.2149 ext.52128

Brazilian Headquarters

Av. Das Nações Unidas 14261
25 andar, sala 25 - 122, Brooklin Paulista
São Paulo 04578 - 000
Brasil
+ 5511.2196.0900

Latin American Headquarters

Montes Urales # 415 Piso 6
Lomas de Chapultepec
Miguel Hidalgo, CDMX
11000 Mexico
+ 52.55.2791.6812

CIM # IFS00912 03/2022
Form Order #809906



Climate change is undeniable. And reversible. Our mission is to prove it. Join the #ClimateTakeBack and help create a climate fit for life.

Desert Scapes
Collection
Vinyl Sheet

Bloom With a View
Spike-tacular

Interface®

Restorative spaces drawn from unexpected places.

Look closely at a desert landscape and you'll find notes of care and comfort—in a warm breeze against the dunes or the soothing earth tones of sand and succulents. Desert Scapes draws inspiration from these restorative moments found in a diverse and demanding environment.

The result is a biophilic healthcare collection – integrating LVT, vinyl sheet and carpet tile – that connects patients and caregivers to the natural world.

Desert Scapes Vinyl Sheet

Desert Scapes includes two vinyl sheet offerings – both in six colorways, inspired by the desert's subtle shifts in color from day to night.

- **Spike-tacular™** - An irregular horizontal texture that recalls the drifting patterns of sand
- **Bloom With a View™** - Layers the texture of Spike-tacular with a soft field of cactus flower for a denser feel

Like all flooring you specify from Interface, Desert Scapes™ products are carbon neutral across their full product life cycle through our third party verified Carbon Neutral Floors™ program.



Three-in-one. All for healthcare.

Desert Scapes Vinyl Sheet Part of an Integrated Collection

Desert Scapes vinyl sheet coordinates with its LVT and carpet tile companions into one collection. This product diversity delivers biophilic beauty and space-specific performance for a cohesive design scheme and effortless flow across your healthcare spaces.

Plus, Desert Scapes works with the full system of Interface products, including *mora*® rubber flooring, for even more possibilities. Address the entire floorplate of a healthcare facility with your single-source provider – Interface®.

For healthcare spaces that call for resilient sheet flooring, Desert Scapes vinyl sheet offers:

- Monolithic, seamless style
- Coordinating heat welds
- Durable finish with stain and slip resistance



LVT PRODUCT PLANT-ASTIC COLOR A02201 DESERT SAND INSTALLED ASHLAR
VINYL SHEET PRODUCT SPIKE-TACULAR COLOR A10004 YUCCA
VINYL SHEET PRODUCT CONTINUAL WOODGRAINS™ COLOR A04003 COOL GREY OAK INSTALLED DIRECTIONAL

interface.com



PRODUCT SPIKE-TACULAR COLOR A10004 YUCCA



interface.com

PRODUCT BLOOM WITH A VIEW COLOR A09002 DUNE DUST



RUBBER PRODUCT NORAPLAN ENVIRONCARE™ COLOR 7035 SNOW SHOEING
VINYL SHEET PRODUCT SPIKE-TACULAR COLOR A10002 DUNE DUST
VINYL SHEET PRODUCT BLOOM WITH A VIEW COLOR A09002 DUNE DUST INSTALLED DIRECTIONAL



5

7

8

6

Specifications

Product Number	A09
Bloom With a View	A10
Spike-tacular	Heterogeneous Vinyl Sheet
Product Construction	Type I, Grade 1
Type/ Grade/ ASTM F1303	28 mil
Wear Layer Thickness	2.5 mm
Total Thickness	Class B
Backing Class	Ceramor™ Coating
Finish	1.83 m x 18 m (6 ft x 59.06 ft)
Nominal Dimensions	1.80 m x 18 m (5 ft 11 in x 59.06 ft)
Usable Dimensions	25%
Recycled Content	GREENGUARD Gold
Indoor Air Quality	FloorScore™ SCS-FS-06645
	CDPH 01350 Compliant
	Carbon Neutral Floors™
Full Life Cycle Carbon Emissions	

Installation Method



DIRECTIONAL

Bloom With a View



[BROWSE IMAGES](#)
[ORDER SAMPLES](#)

Spike-tacular



[BROWSE IMAGES](#)
[ORDER SAMPLES](#)

Heat Weld Colorline

Bloom With a View™ Coordinates



1129751



1129752



1129753



1129754

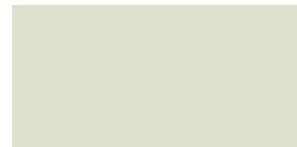


1129755

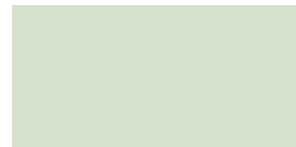


1129756

Spike-tacular™ Coordinates



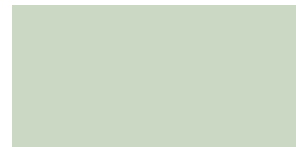
1129757



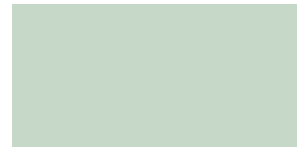
1129758



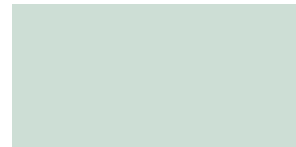
1129759



1129760



1129761



1129762

Complete your flooring with heat weld. Solve the special requirements of your medical facility by sealing floor joints with weld rod colors that are designed to beautifully coordinate with Desert Scapes vinyl sheet flooring.

Specifications

Round, Diameter	~ .16" (4 mm)
Roll Length	180 linear feet (54.864 m)

Bloom With a View™ Colorline



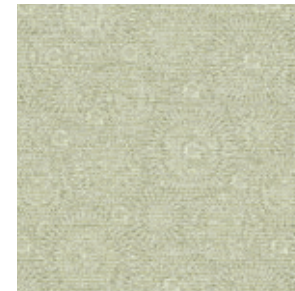
A09001 DESERT SAND
HEAT WELD 1129751



A09002 DUNE DUST
HEAT WELD 1129752



A09003 FOSSIL
HEAT WELD 1129753



A09004 YUCCA
HEAT WELD 1129754

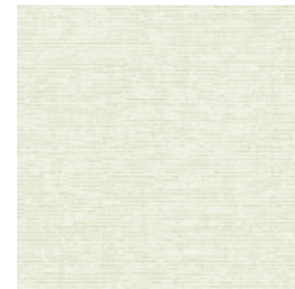


A09005 ALOE VERA
HEAT WELD 1129755

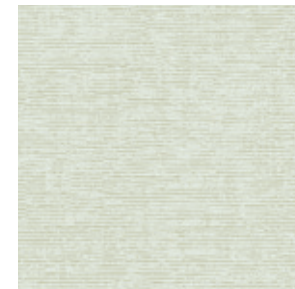


A09006 OASIS
HEAT WELD 1129756

Spike-tacular™ Colorline



A10001 DESERT SAND
HEAT WELD 1129757



A10002 DUNE DUST
HEAT WELD 1129758



A10003 FOSSIL
HEAT WELD 1129759



A10004 YUCCA
HEAT WELD 1129760



A10005 ALOE VERA
HEAT WELD 1129761



A10006 OASIS
HEAT WELD 1129762

Why Interface Heterogeneous Vinyl Sheet?

Performance



Durability

Our Ceramor™ coating and 28 mil wear layer minimize scratching and scuffing and protect the print layer for long-lasting beauty, backed by a 15-year limited warranty.



Easy Maintenance

Stain resistant flooring that is easy to clean means a lower cost of ownership over the life of your floor.



Safety

Product construction, including wear layer embossing, helps prevent slips, trips and falls without impeding push pull in rolling loads.



Superior Technical Service

Our support and training with key personnel in healthcare facilities helps mitigate risk, ensure best practices and improve the longevity of the floor.

Smart Design



Integrated System

Our system of flooring products offers the flexibility to meet space-specific performance and design needs of any space in your healthcare facility at any budget.



Biophilic Design

Nature-inspired elements in a monolithic aesthetic help you create soothing, restorative spaces that benefit patients, caregivers and family alike.

IDS

Interface Design Studio

Our trained designers work with you to provide product suggestions, space specific floor designs or full floor plans, making your design projects easier from beginning to end.

Samples

Order vinyl sheet samples at [interface.com](https://www.interface.com) or email your Sales and Customer Support Team. Not near a computer? Give us a call at 1.800.332.NORA. Your Interface vinyl sheet samples will be fulfilled by our nora® by Interface teams.

interface.com

Register at [interface.com](https://www.interface.com) to:

- Browse products and order samples
- View flooring in a variety of room scenes
- Change colors, view as a grid or in a room, download and share
- Sign up to get the latest information on Interface products and news

Our Sustainability Journey



Climate Take Back™

Our mission, Climate Take Back, invites you to join us as we commit to operating in a way that is restorative to the planet and creates a climate fit for life.

Third Party Verification



Carbon Neutral Floors™

The flooring products that we sell, including vinyl sheet, are carbon neutral across their full product life cycle through our third party verified Carbon Neutral Floors™ program. Learn more at [interface.com/carbonneutral](https://www.interface.com/carbonneutral)



Environmental Product Declaration (EPD)



GREENGUARD Gold



Health Product Declaration (HPD)



We have tried our very best to accurately represent product colors. However, due to the nature of printed materials, color of actual products may vary slightly. Please request a sample to see actual product color.

All product specifications reflect averages derived from product sample testing, are subject to normal manufacturing and testing tolerances and inherent pattern variances, and may be changed without notice. For more information about these and other important attributes of the product(s) described herein, including recycled content and product warranty information, please see [interface.com/disclaimer](https://www.interface.com/disclaimer).