



RECYCLED
Paper made from
recycled material
FSC® C009723



PLEASE RECYCLE

Printed on 50% post consumer waste (PCW)
fiber manufactured using wind power.

interface.com

United States Headquarters

1280 West Peachtree Street NW
Atlanta, GA 30309
1.800.634.6032

Canadian Headquarters

233 Lahr Drive
Belleville, ON K8N 5S2
1.800.267.2149 ext.52128

Brazilian Headquarters

Av. Das Nações Unidas 14261
25 andar, sala 25 - 122, Brooklin Paulista
São Paulo 04578 - 000
Brasil
+ 5511.2196.0900

Latin American Headquarters

Montes Urales # 415 Piso 6
Lomas de Chapultepec
Miguel Hidalgo, CDMX
11000 Mexico
+ 52.55.2791.6812

CIM #IFS00911 03/2022



Climate change is undeniable. And reversible. Our mission is to prove it.
Join the #ClimateTakeBack and help create a climate fit for life.

Desert Scapes Collection

Cactus Grooves
Just Deserts
Prickly as a Pear

Medical Center

Floor	Name
6	Exam room
5	Occupational Health
4	Chc Lab Surgery
3	Building Cath Pharmacy
2	Counseling Room Administration
1	Reception / X-Ray

Interface

Restorative spaces drawn from unexpected places.

Look closely at a desert landscape and you'll find notes of care and comfort—in a warm breeze across the dunes or the soothing earth tones of sand and succulents. Desert Scapes draws inspiration from these restorative moments in the diverse and demanding desert landscape.

The result is a biophilic healthcare collection – integrating LVT, vinyl sheet and carpet tile – that connects patients and caregivers to the natural world.

Desert Scapes Carpet Tile

Desert Scapes features three carpet tile planks - each in six colorways, reflecting the desert's transition from day to night:

- **Just Deserts™** - Inspired by dunes. A plush, natural texture with tonal variation for a comforting environment.
- **Cactus Grooves™** - Echoes striations in the crevices of a desert landscape. Tiny organic lines provide hints of color across the floor.
- **Prickly as a Pear™** - Drawn from budding blossoms of cactus and agave. A familiar, broken-lattice pattern provides a sense of calm and structure.

Like all flooring you specify from Interface, Desert Scapes products are carbon neutral across their full product life cycle through our third party verified Carbon Neutral Floors™ program.



↑ Main Entrance
← Outpatient Registration

CARPET PRODUCT CACTUS GROOVES COLOR 107417 YUCCA INSTALLED HERRINGBONE
LVT PRODUCT PLANT ASTIC COLOR A02204 YUCCA INSTALLED ASHLAR





Three-in-one. All for healthcare.

Desert Scapes Carpet Tile

Part Of An Integrated Collection

Desert Scapes carpet tile coordinates with its LVT and vinyl sheet companions into one collection. This product diversity delivers biophilic beauty and space-specific performance for a cohesive design scheme and effortless flow across your healthcare spaces.

Plus, Desert Scapes works with the full system of Interface products, including nora® rubber flooring, for even more possibilities. Address the entire floorplate of a healthcare facility with your single-source provider – Interface®.

For healthcare spaces that call for soft flooring, Desert Scapes carpet tile offers:

- The flexibility of a modular tile
- Ease of installation and replacement with glue-free TacTiles™
- Protection against mold growth and odor with Intersept®, our proprietary preservative

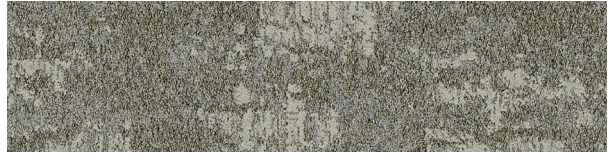
→ Radiology & Waiting

Cardiology

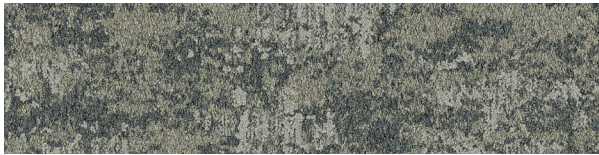
Just Deserts™ Colorline



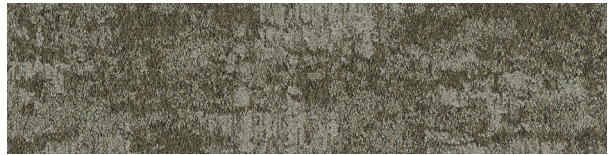
107426 SAND



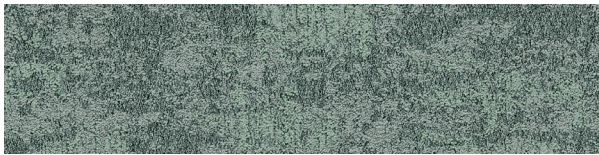
107427 DUNE



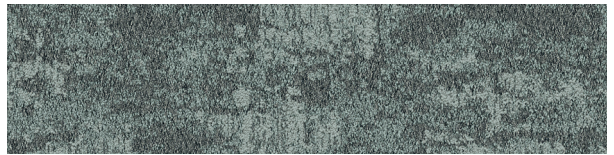
107428 FOSSIL



107429 YUCCA



107430 ALOE



107431 OASIS

Specifications

Modular, 25cm x 1m	125230
Yarn Manufacturer	Aquafil
Yarn System	100% Recycled Content Nylon
Color System	100% Solution Dyed
Construction	Tufted Pattern Loop
Preservative Protection	Intersept®
Soil/Stain Protection	Protekt ² ®
Pile Thickness	0.126 in., 3.2 mm
Pile Density	8,286 oz/yd ³
Total Recycled Content	Up To 71%
Indoor Air Quality	Green Label Plus #GLP0820

[View the full product specification on interface.com](#)

Installation Methods



ASHLAR



HERRINGBONE

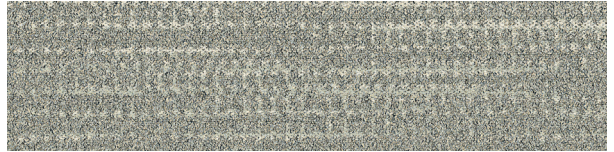


BROWSE IMAGES
ORDER SAMPLES

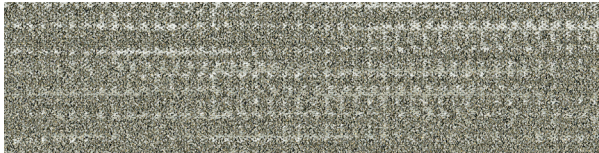
Cactus Grooves™ Colorline



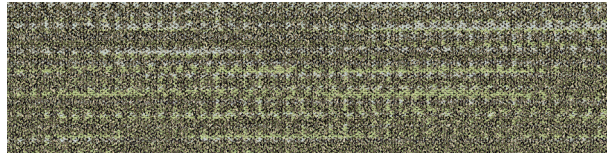
107414 SAND



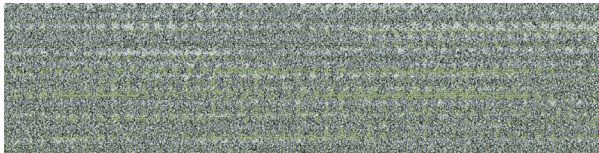
107415 DUNE



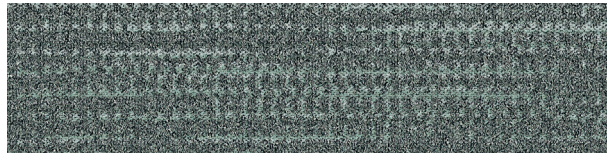
107416 FOSSIL



107417 YUCCA



107418 ALOE



107419 OASIS

Specifications

Modular, 25cm x 1m	131030
Yarn Manufacturer	Aquafil
Yarn System	100% Recycled Content Nylon
Dye Method	100% Solution Dyed
Construction	Tufted Textured Loop
Preservative Protection	Intersept®
Soil/Stain Protection	Protekt ² ®
Pile Thickness	0.111 in., 2.8 mm
Pile Density	7,135 oz/yd ³
Total Recycled Content	Up To 84%
Indoor Air Quality	Green Label Plus #GLP0820

View the full product specification on [interface.com](https://www.interface.com)

Installation Methods



ASHLAR



HERRINGBONE



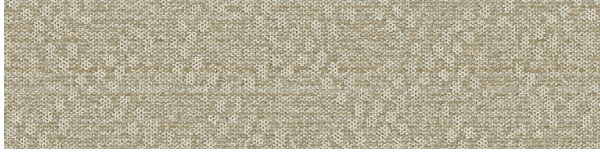
BROWSE IMAGES
ORDER SAMPLES



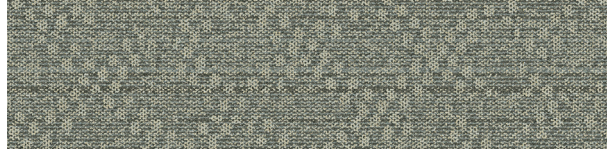
VINYL SHEET PRODUCT SPIKE-TACULAR COLOR A10005 ALOE VERA INSTALLED DIRECTIONAL
CARPET PRODUCT CACTUS GROOVES COLOR 107419 OASIS INSTALLED ASHLAR



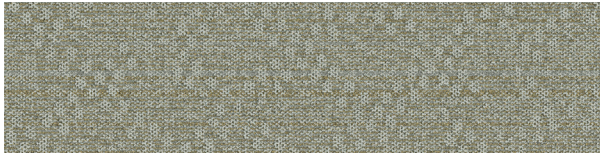
Prickly as a Pear™ Colorline



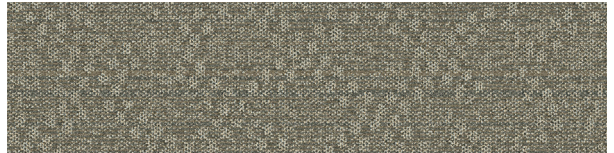
107420 SAND



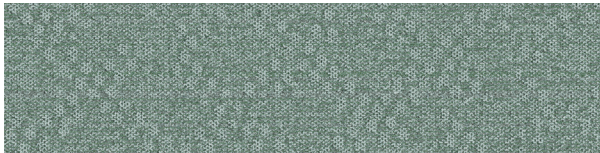
107421 DUNE



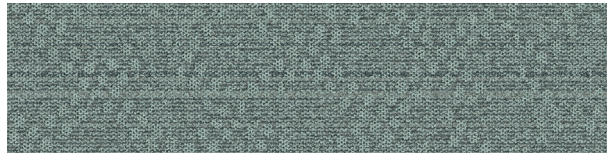
107422 FOSSIL



107423 YUCCA



107424 ALOE



107425 OASIS

Specifications

Modular, 25cm x 1m	131120
Yarn Manufacturer	Aquafil
Yarn System	100% Recycled Content Nylon
Color System	100% Solution Dyed
Construction	Tufted Textured Loop
Preservative Protection	Intersept®
Soil/Stain Protection	Protek ² ®
Pile Thickness	0.085 in., 2.2 mm
Pile Density	7,200 oz/yd ³
Total Recycled Content	Up To 83%
Indoor Air Quality	CRI Green Label Plus #GLP0820

View the full product specification on [interface.com](https://www.interface.com)

Installation Methods



ASHLAR



HERRINGBONE



BROWSE IMAGES
ORDER SAMPLES



Exam Rooms 2-4
T Scan and X-Ray



LVT PRODUCT CACTUS MAKES PERFECT COLOR A02102 DUNE DUST
CARPET PRODUCT JUST DESERTS COLOR 107427 DUNE INSTALLED ASHLAR

Why Our Modular Flooring?



Modular Flooring

Performance and flexibility.

Interface's standard backing systems set the industry standard for modular performance. Tiles stay on the floor with no upcurl, no tapping and no rippling effect, yet are easy to selectively replace. Our modular carpet is easier to handle than bulky roll carpet and produces an average of just 3-4% waste compared to roll carpet's average of 14%. And it installs seamlessly with our LVT, no transition strips needed.



TacTiles™

No glue installation. Our revolutionary TacTiles installation system eliminates the need for glue, adhering tiles securely together to form a floor that "floats" for greater flexibility, easier replacement and long-term performance. The result? Less mess, less waste and virtually no VOCs, not to mention an environmental footprint that is over 90% lower than that of traditional glue adhesives. TacTiles are approved for use on GlasBac™, CQuest™GB, Graphlar™ and Graphlex™.



Intersept®

Mold protection. Our proprietary preservative, Intersept, protects our modular carpet against mold growth and odor-causing bacteria—guaranteed. Intersept treated carpet, with proper maintenance, shows no mold or bacterial growth when tested per the ASTM E2471 Standard Test Method. Intersept is EPA approved for safe use in carpet, water insoluble and contains no halogens, heavy metals, phenols or formaldehyde. Intersept is standard in Interface carpet tile products backed with GlasBac, CQuestGB, ReadyBac™ and CushionBac Renew™.

Samples

Order samples at interface.com. You'll receive email order confirmations, 24/7 access to order status and more. Not near a computer? You can also request samples by calling one of the numbers below.

United States
1.877.605.1500

Canada
1.866.398.3192

Brazil
+ 5511.2196.0900

Latin America
+ 52.55.2791.6812

interface.com

Register at interface.com to:

- Browse products and order samples
- View carpet in a variety of room scenes
- Browse floor designs, change colors, view as a grid or in a room, download and share
- Check order status and inventory availability
- Sign up to get the latest information on Interface products and news

InterCircle Sample Return

Help us close the loop on the carpet sampling process. Through our InterCircle Sample Return program, sample materials stay out of the landfill and are re-used as samples until it is time to recycle them into new carpet. By reducing sample production material and diverting old materials from the landfill, we can reduce our overall environmental footprint.

Call 1.877.605.1500 (U.S.) or 1.866.398.3192 (Canada) to order a sample return bag with a prepaid return label.



ReEntry™

Recyclable. Through our ReEntry program, we reclaim all Interface carpet tile. The result? Carpet tile products with up to 85% total recycled content, including as much as 25% post-consumer content.



Sustainability Transparency

Transparency and certified sustainability leadership come standard on Interface products. We enlist outside partners to help us evaluate the entire product lifecycle and reduce the environmental and human health impact of our flooring. And, carpet products made in our US facilities are made with 99% renewable energy.



Help Lower Your Carbon Footprint

Like all the flooring products we sell, Interface carpet tile is carbon neutral across its full product life cycle through our third party verified Carbon Neutral Floors™ program. To find out more, visit interface.com/carbonneutral



Environmental Product Declaration (EPD) –

A statement of product ingredients and environmental impacts over the entire life cycle of a product. A comprehensive life cycle assessment (LCA) is performed to ISO standards to develop an EPD, after which both the EPD and LCA must be third party verified.



Health Product Declaration (HPD) –

A transparency tool for evaluating whether a product supports Green Chemistry. As part of our work on Health and Materials, Interface continuously reduces the environmental and health impacts of our products through elimination of materials of concern.



CRI Green Label Plus – An independent testing program that identifies carpet and adhesives with very low emissions of VOCs to help improve indoor air quality.



NSF 140 Sustainable Carpet Assessment –

The only carpet sustainability standard in North America that evaluates the environmental impact of carpet for its entire lifecycle.

We have tried our very best to accurately represent product colors. However, due to the nature of printed materials, color of actual products may vary slightly. Please request a sample to see actual product color.

All product specifications reflect averages derived from product sample testing, are subject to normal manufacturing and testing tolerances and inherent pattern variances, and may be changed without notice. For more information about these and other important attributes of the product(s) described herein, including recycled content and product warranty information, please see interface.com/disclaimer.