

# Crafted Connections Collection

---

Bound To Last  
Dual Effect  
Thread Lightly

---

**Interface®**

**Dial in neutral. Or dial it up.**

The loom. The shuttle. The weft and warp. Patient hands shaping threads into something timeless.

Crafted Connections honors the traditions of textile art—changing the way you look at neutrals and subtle accenting.

Thread Lightly™ captures weaving's sophistication. Bound to Last™ brings mid-century soul to bouclé's curled textures. Dual Effect™ unites batik style with geometric patterning for modern floors.

Designs that bring warmth, character, and a sense of the human touch—whether used on their own, or in artful combination.





CARPET PRODUCT THREAD LIGHTLY COLOR ASH/SAGE  
LVT PRODUCT BRUSHED LINES 3.0 MM COLOR CELADON INSTALLED ASHLAR



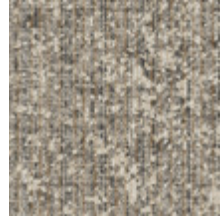
PRODUCTS DUAL EFFECT & THREAD LIGHTLY COLOR LINEN INSTALLED BRICK



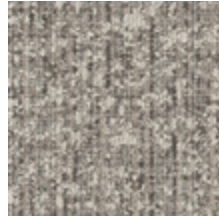
## Bound To Last™ Color Range



108557 ASH



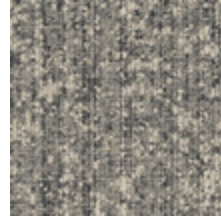
108558 FOSSIL



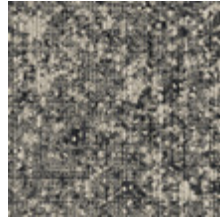
108559 OAT



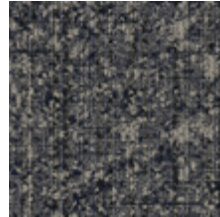
108560 JETTY



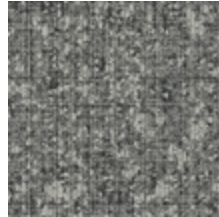
108561 MICA



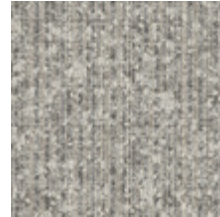
108562 ONYX



108563 NAVY



108564 FLANNEL



108565 LINEN



## Specifications

Modular, 50 cm x 50 cm	12704
Yarn Manufacturer	Aquafil
Yarn System	100% Recycled Content Nylon
Dye Method	100% Solution Dyed
Construction	Tufted Pattern Loop
Preservative Protection	Intersept®
Soil/Stain Protection	Protek <sup>2</sup> ™
Pile Thickness	0.095 in, 2.4 mm
Pile Density	8,716 oz/yd <sup>3</sup>
Total Recycled Content	75%
Indoor Air Quality	CRI Green Label Plus #GLP0820

[View the full product specification on interface.com](#)

## Installation Methods



ASHLAR



BRICK



MONOLITHIC



QUARTER-TURN



**BROWSE IMAGES**  
**ORDER SAMPLES**

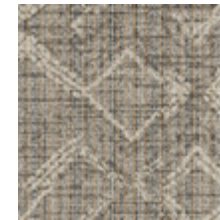
PRODUCT BOUND TO LAST COLOR NAVY INSTALLED MONOLITHIC



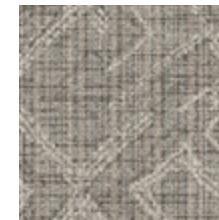
## Dual Effect™ Color Range



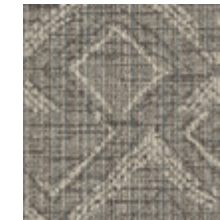
108566 ASH



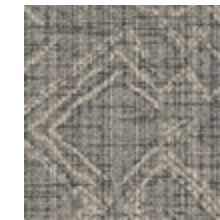
108567 FOSSIL



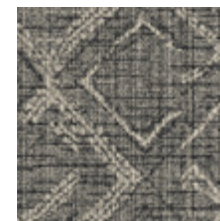
108568 OAT



108569 JETTY



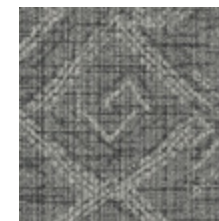
108570 MICA



108571 ONYX



108572 NAVY



108573 FLANNEL



108574 LINEN

## Specifications

Modular, 50 cm x 50 cm	12705
Yarn Manufacturer	Aquafil
Yarn System	100% Recycled Content Nylon
Dye Method	100% Solution Dyed
Construction	Tufted Pattern Loop
Preservative Protection	Intersept®
Soil/Stain Protection	Protek <sup>12</sup> ™
Pile Thickness	0.095 in, 2.4 mm
Pile Density	8,337 oz/yd <sup>3</sup>
Total Recycled Content	74%
Indoor Air Quality	CRI Green Label Plus #GLP0820

View the full product specification on [interface.com](https://www.interface.com)

## Installation Methods



ASHLAR



BRICK



MONOLITHIC



QUARTER-TURN



**BROWSE IMAGES**  
**ORDER SAMPLES**

## Thread Lightly™ Color Range



108539 ASH



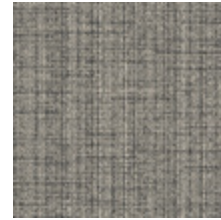
108540 FOSSIL



108541 OAT



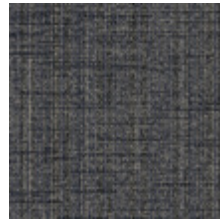
108542 JETTY



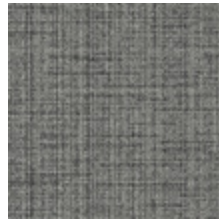
108543 MICA



108544 ONYX



108545 NAVY



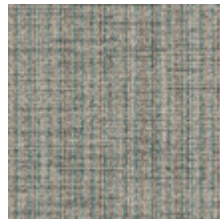
108546 FLANNEL



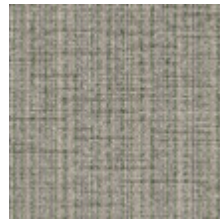
108547 LINEN



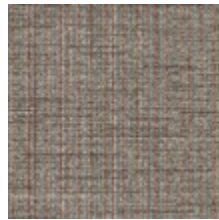
108548 ASH/SAGE



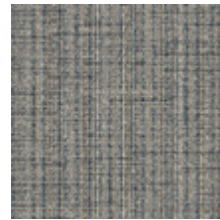
108549 FOSSIL/TEAL



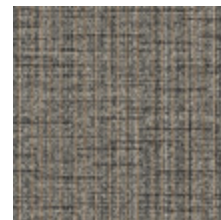
108550 OAT/MOSS



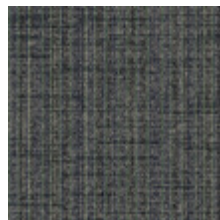
108551 JETTY/RUST



108552 MICA/OCEAN



108553 ONYX/TAN



108554 NAVY/PINE



108555 FLANNEL/OLIVE



108556 LINEN/LILAC

## Specifications

Modular, 50 cm x 50 cm	12703
Yarn Manufacturer	Aquafil
Yarn System	100% Recycled Content Nylon
Dye Method	100% Solution Dyed
Construction	Tufted Pattern Loop
Preservative Protection	Intersept®
Soil/Stain Protection	Protek12™
Pile Thickness	0.068 in, 1.7 mm
Pile Density	11,118 oz/yd³
Total Recycled Content	74%
Indoor Air Quality	CRI Green Label Plus #GLP0820

[View the full product specification on interface.com](#)

## Installation Methods



ASHLAR



BRICK



MONOLITHIC



QUARTER-TURN

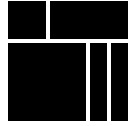


**BROWSE IMAGES**  
**ORDER SAMPLES**



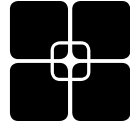
PRODUCT THREAD LIGHTLY COLOR JETTY/RUST INSTALLED MONOLITHIC

## Why Our Modular Flooring?



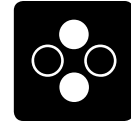
### Modular Flooring

*Performance and flexibility.* Interface's standard backing systems set the industry standard for modular performance. Tiles stay on the floor with no upcurl, no taping and no rippling effect, yet are easy to selectively replace. Our modular carpet is easier to handle than bulky roll carpet and produces an average of just 3-4% waste compared to roll carpet's average of 14%. And it installs seamlessly with our LVT, no transition strips needed.



### TacTiles™

*No glue installation.* Our revolutionary TacTiles installation system eliminates the need for glue, adhering tiles securely together to form a floor that “floats” for greater flexibility, easier replacement and long-term performance. The result? Less mess, less waste and virtually no VOCs, not to mention an environmental footprint that is over 90% lower than that of traditional glue adhesives. TacTiles pair with our GlasBac™ and CQuest™ backings.



### Intersept®

*Mold protection.* Our proprietary preservative, Intersept, protects our modular carpet against mold growth and odor-causing bacteria—guaranteed. Intersept treated carpet, with proper maintenance, shows no mold or bacterial growth when tested per the ASTM E2471 Standard Test Method. Intersept is EPA approved for safe use in carpet, water insoluble and contains no halogens, heavy metals, phenols or formaldehyde. Intersept is standard in Interface carpet tile products backed with GlasBac™ and CushionBac Renew™.



### Environmental Product Declaration (EPD)

A statement of product ingredients and environmental impacts over the entire life cycle of a product. A comprehensive life cycle assessment (LCA) is performed to ISO standards to develop an EPD, after which both the EPD and LCA must be third party verified.



### Health Product Declaration (HPD)

A transparency tool for evaluating whether a product supports Green Chemistry. As part of our work on Health and Materials, Interface continuously reduces the environmental and health impacts of our products through elimination of materials of concern.



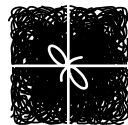
### CRI Green Label Plus

An independent testing program that identifies carpet and adhesives with very low emissions of VOCs to help improve indoor air quality.



### NSF 140 Sustainable Carpet Assessment

The only carpet sustainability standard in North America that evaluates the environmental impact of carpet for its entire life cycle.



### ReEntry™

*Recyclable.* Through our ReEntry program we reclaim and recycle our carpet tile and Sound Choice™ LVT. ReEntry is the only third party certified recycling system among North American flooring manufacturers.



### Sustainability Transparency

Transparency and certified sustainability leadership come standard on Interface products. We enlist outside partners to help us evaluate the entire product life cycle and reduce the environmental and human health impact of our flooring. And, carpet products made in our US facilities are made with 99% renewable energy.

### 📍 Samples

Register and order samples at [interface.com](https://www.interface.com). Not near a computer? You can also request samples by calling one of the numbers below.

United States  
1.877.605.1500

Canada  
1.866.398.3192

### interface.com

- Do more on [interface.com](https://www.interface.com)
- Browse products and order samples
- Save and share favorites
- See images of products in a variety of room scenes
- Browse floor designs, change colors, upload your own image, download and share
- Get full specifications, sustainability certifications and more
- Check order status and inventory availability
- Sign up to get the latest information on Interface products and news

### InterCircle Sample Return

Help us close the loop on the carpet sampling process. Through our InterCircle Sample Return program, sample materials stay out of the landfill and are re-used as samples until it is time to recycle them into new carpet. By reducing sample production material and diverting old materials from the landfill, we can reduce our overall environmental footprint.

Call 1.877.605.1500 (U.S.) or 1.866.398.3192 (Canada) to order a sample return bag with a prepaid return label.

We have tried our very best to accurately represent product colors. However, due to the nature of printed materials, color of actual products may vary slightly. Please request a sample to see actual product color.

All product specifications reflect averages derived from product sample testing, are subject to normal manufacturing and testing tolerances and inherent pattern variances, and may be changed without notice. For more information about these and other important attributes of the product(s) described herein, including recycled content and product warranty information, please see [interface.com/disclaimer](https://www.interface.com/disclaimer).



PLEASE RECYCLE

Printed on 50% post consumer waste (PCW)  
fiber manufactured using wind power.

**interface.com**

**United States Headquarters**

1280 West Peachtree Street NW  
Atlanta, GA 30309  
1.800.634.6032

**Canadian Headquarters**

233 Lahr Drive  
Belleville, ON K8N 5S2  
1.800.267.2149 ext. 52128

CIM# IFS00994 02/2026

