

Concrete Mix™ Collection

www.interface.com

United States Headquarters

1503 Orchard Hill Road
LaGrange, GA 30240
1.800.336.0225 ext.6511

Canadian Headquarters

233 Lahr Drive
Belleville, ON K8N 5S2
1.800.267.2149 ext.2128

Brazilian Headquarters

Rua Surubim, 577 - Conjuntos
73/74 7º Andar
04571-050 - São Paulo - SP
+ 55 11 2196 0900

Latin American Headquarters

Montes Urales # 415 Piso 6
Col. Lomas de Chapultepec
México City, D.F. 11000
Mexico
+ 52 55 6395 5100

CIM # IFS00472 09/2014



Mission Zero®

our promise to eliminate any
negative impact our company
may have on the environment
by the year 2020.

Interface®

Concrete Mix™ Collection

Concrete is a staple of the built environment, but rarely the star of the show. The Concrete Mix Collection brings this under-floor workhorse into the spotlight in four styles and 12 neutral colors. Brushed™ brings a monolithic feel, Broomed™ has a thin stripe and hint of pattern, while Grooved™ reflects the look and texture of raked concrete. Blended™ incorporates a mix of those three styles into one design that can be installed non directionally.

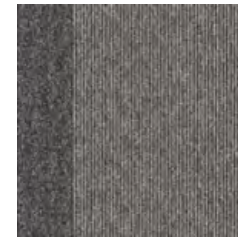




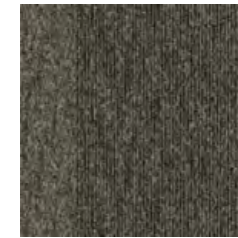


PRODUCT BLENDED COLOR 100226 FIELDSTONE INSTALLED QUARTER-TURN

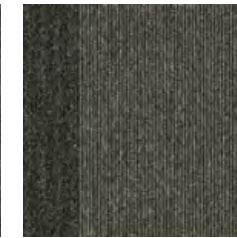
Blended™ Colorline



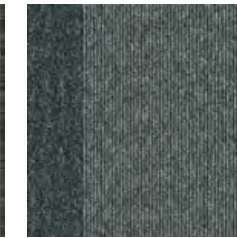
100218 LIMESTONE



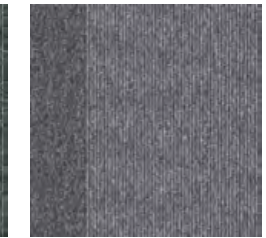
100219 COBBLESTONE



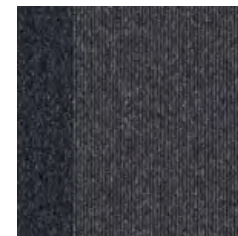
100220 GREENSTONE



100221 FLAGSTONE



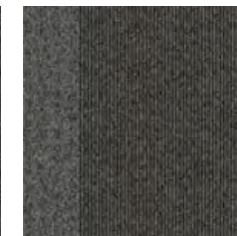
100222 KEYSTONE



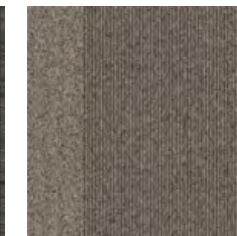
100223 BLUESTONE



100224 CORNERSTONE



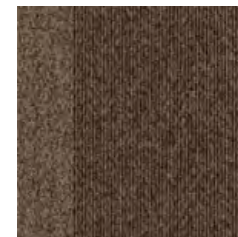
100225 SOAPSTONE



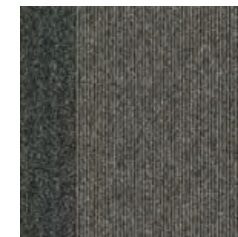
100226 FIELDSTONE



100227 SHELLSTONE



100228 SANDSTONE



100229 BROWNSTONE

Specifications

Modular, 50cm x 50cm	124810250H
Backing System	GlasBac®RE Tile
Yarn Manufacturer	Aquafil
Yarn System	100% Recycled Content Type 6 Nylon
Color System	100% Solution Dyed
Construction	Tufted Textured Loop
Preservative Protection	Intersept®
Soil/Stain Protection	Protekt2®
Pile Thickness	0.117 in., 3.0 mm
Pile Density	6,154
Total Recycled Content	79% (36% Post-Consumer)
Indoor Air Quality	CRI Green Label Plus #GLP0820

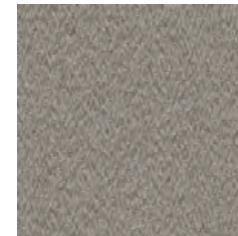


NON-DIRECTIONAL QUARTER-TURN

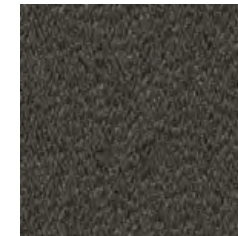


PRODUCT BRUSHED COLOR 100026 FIELDSTONE. INSTALLED MONOLITHIC

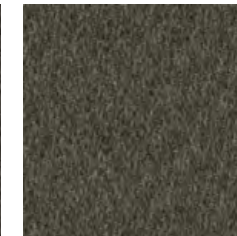
Brushed™ Colorline



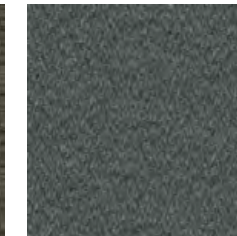
100018 LIMESTONE



100019 COBBLESTONE



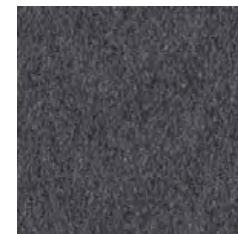
100020 GREENSTONE



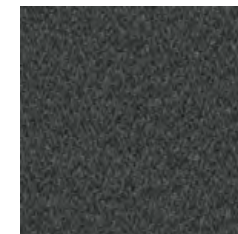
100021 FLAGSTONE



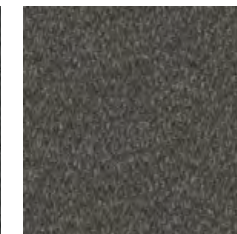
100022 KEYSTONE



100023 BLUESTONE



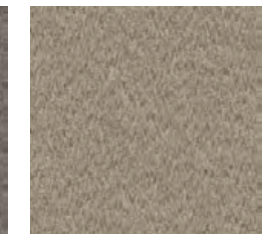
100024 CORNERSTONE



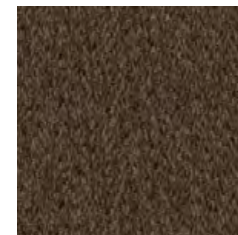
100025 SOAPSTONE



100026 FIELDSTONE



100027 SHELLSTONE



100028 SANDSTONE



100029 BROWNSTONE

Specifications

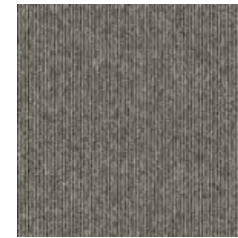
Modular, 50cm x 50cm	124780250H
Backing System	GlasBac®RE Tile
Yarn Manufacturer	Aquafil
Yarn System	100% Recycled Content Type 6 Nylon
Color System	100% Solution Dyed
Construction	Tufted Textured Loop
Preservative Protection	Intersept®
Soil/Stain Protection	Protekt2®
Pile Thickness	0.117 in., 3.0 mm
Pile Density	6,154
Total Recycled Content	79% (36% Post-Consumer)
Indoor Air Quality	CRI Green Label Plus #GLP0820



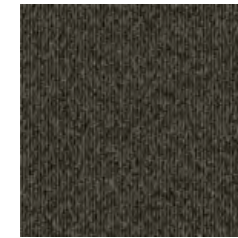


PRODUCT GROOVED COLOR 100096 FIELDSTONE INSTALLED QUARTER-TURN

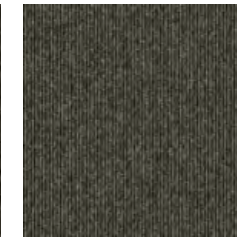
Grooved™ Colorline



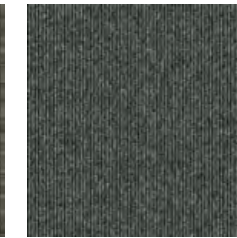
100088 LIMESTONE



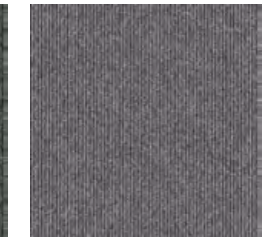
100089 COBBLESTONE



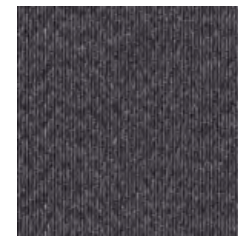
100090 GREENSTONE



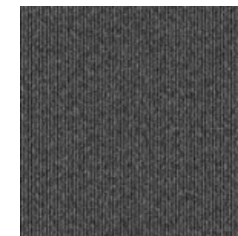
100091 FLAGSTONE



100092 KEYSTONE



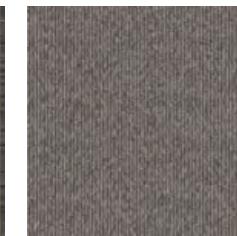
100093 BLUESTONE



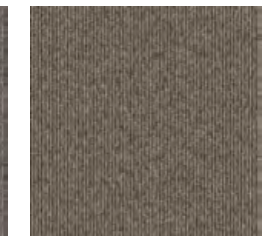
100094 CORNERSTONE



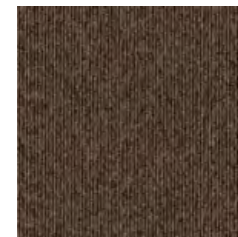
100095 SOAPSTONE



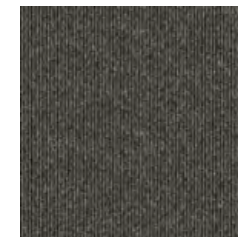
100096 FIELDSTONE



100097 SHELLSTONE



100098 SANDSTONE



100099 BROWNSTONE

Specifications

Modular, 50cm x 50cm	124800250H
Backing System	GlasBac®RE Tile
Yarn Manufacturer	Aquafil
Yarn System	100% Recycled Content Type 6 Nylon
Color System	100% Solution Dyed
Construction	Tufted Textured Loop
Preservative Protection	Intersept®
Soil/Stain Protection	Protekt2®
Pile Thickness	0.117 in., 3.0 mm
Pile Density	6,154
Total Recycled Content	79% (36% Post-Consumer)
Indoor Air Quality	CRI Green Label Plus #GLP0820



QUARTER-TURN



PRODUCT BROOMED COLOR 100038 FIELDSTONE INSTALLED QUARTER-TURN

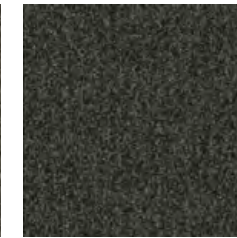
Broomed™ Colorline



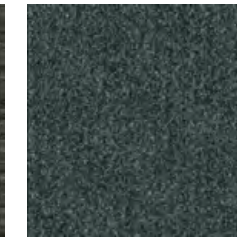
100030 LIMESTONE



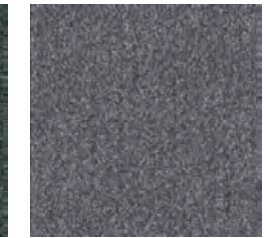
100031 COBBLESTONE



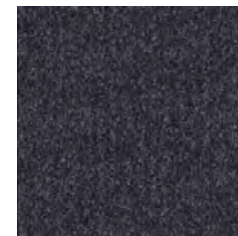
100032 GREENSTONE



100033 FLAGSTONE



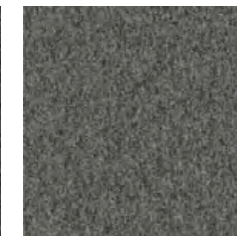
100034 KEYSTONE



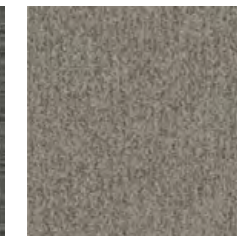
100035 BLUESTONE



100036 CORNERSTONE



100037 SOAPSTONE



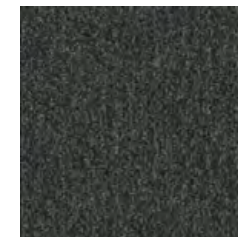
100038 FIELDSTONE



100039 SHELLSTONE



100040 SANDSTONE



100041 BROWNSTONE

Specifications

Modular, 50cm x 50cm	124790250H
Backing System	GlasBac®RE Tile
Yarn Manufacturer	Aquafil
Yarn System	100% Recycled Content Type 6 Nylon
Color System	100% Solution Dyed
Construction	Tufted Textured Loop
Preservative Protection	Intersept®
Soil/Stain Protection	Protek2®
Pile Thickness	0.117 in., 3.0 mm
Pile Density	6,154
Total Recycled Content	79% (36% Post-Consumer)
Indoor Air Quality	CRI Green Label Plus #GLP0820



QUARTER-TURN

Why Our Modular Carpet?



Modular Carpet Tile

Performance and Flexibility. Interface's standard backing systems set the industry standard for modular performance. Tiles stay on the floor with no upcurl, no tapping and no rippling effect, yet are easy to selectively replace. Our modular carpet is also easier to handle, install and maintain than bulky roll carpet. And, it installs with less waste so you save time and money — 3-4% for typical modular carpet compared to an average waste factor of 14% for traditional roll carpet.



Cool Carpet™

Help Stop Global Warming and Earn a LEED® Innovation Credit. ALL Interface modular carpet sold in North America is third party verified climate neutral Cool Carpet. Cool Carpet zeros out all greenhouse gas (GHG) emissions associated with the entire lifecycle of your carpet. And climate neutral verified Cool Carpet may be eligible for a USGBC or CaGBC LEED Innovation Credit.



TacTiles®

No Glue Installation. Our revolutionary TacTiles installation system eliminates the need for glue, adhering tiles securely together to form a floor that “floats” for greater flexibility, easier replacement and long-term performance. The result? Less mess, less waste and virtually no VOCs, not to mention an environmental footprint that is over 90% lower than that of traditional glue adhesives.



Intersept®

Mold Protection. Our proprietary preservative, Intersept, protects our modular carpet against mold growth and odor-causing bacteria — guaranteed. Intersept treated carpet, with proper maintenance, shows no mold or bacterial growth when tested per the ASTM E2471 Standard Test Method. Intersept is low in toxicity, water insoluble and contains no arsenic, heavy metals, phenols or formaldehyde.



ReEntry® 2.0

Recyclable is Now a Reality. Our ReEntry 2.0 program uses innovative technology that gives us the ability to cleanly separate the face fiber and backing of nearly any carpet type. Separated Type 6 and 6,6 nylon are recycled into new 6 and 6,6 nylon, while separated GlasBac® and similar competitor backings are recycled into new GlasBac®RE non-virgin PVC backing using our Cool Blue™ technology. The result? Products with up to 81% total recycled content, including as much as 35% post-consumer content.



Sustainable Choice

Environmental Responsibility. Interface was the industry's first to earn an EPD (Environmental Product Declaration), which evaluates consistent factors based on full lifecycle assessment (LCA). We achieved an EPD based on our Convert™ products and have now expanded our EPDs into multiple categories covering more than 90% of our products.

In addition, all Interface products with GlasBacRE backing meet the Platinum level of the NSF/ANSI 140 Sustainable Assessment for Carpet. GlasBac or NexStep® backed products meet the Gold level. All may contribute toward a USGBC or CaGBC LEED Innovation Credit.

Samples

Order samples at www.interface.com. You'll receive email order confirmations, 24/7 access to order status and more. Not near a computer? You can also request samples by calling one of the numbers below.

United States 1.877.605.1500	Canada 1.866.398.3192
Brazil + 55 11 2196 0900	Latin America + 52 55 6395 5100

www.interface.com

Register at www.interface.com to:

- Order samples
- View carpet in a variety of room scenes and even upload your own room
- Use our LEED Calculator
- Check order status and inventory availability
- Sign up to get the latest information on Interface products and news

InterCircle™ Sample Return

Help us close the loop on the carpet sampling process. Through our InterCircle Sample Return program, sample materials stay out of the landfill and are re-used as samples until it is time to recycle them into new carpet. By reducing sample production material and diverting old materials from the landfill, we can reduce our overall environmental footprint.

Call 1.877.605.1500 (U.S.) or 1.866.398.3192 (Canada) to order a sample return bag with a prepaid return label.

Third Party Certification



Cool Carpet – Our third party verified carbon offset program zeroes out all greenhouse gas (GHG) emissions associated with the entire lifecycle of your carpet.



Environmental Product Declaration (EPD) – A statement of product ingredients and environmental impacts over the entire life cycle of a product. A comprehensive life cycle assessment (LCA) is performed to ISO standards to develop an EPD, after which both the EPD and LCA must be third party verified.



Sustainable Assessment for Carpet – The only carpet sustainability standard in North America that evaluates the environmental impact of carpet for its entire lifecycle.



CRI Green Label Plus – An independent testing program that identifies carpet and adhesives with very low emissions of VOCs to help improve indoor air quality.

All product specifications reflect averages derived from product sample testing, are subject to normal manufacturing and testing tolerances and inherent pattern variances, and may be changed without notice. For more information about these and other important attributes of the product(s) described herein, including recycled content and product warranty information, please see www.interface.com/disclaimer.



RECYCLED
Paper made from recycled material
FSC® C009723



PLEASE RECYCLE

Printed on 50% post consumer waste (PCW) fiber manufactured using wind power.

We have tried our very best to accurately represent product colors. However, due to the nature of printed materials, color of actual products may vary slightly. Please request a sample to see actual product color.