



ChromaFlex Collection

Interface®



splash

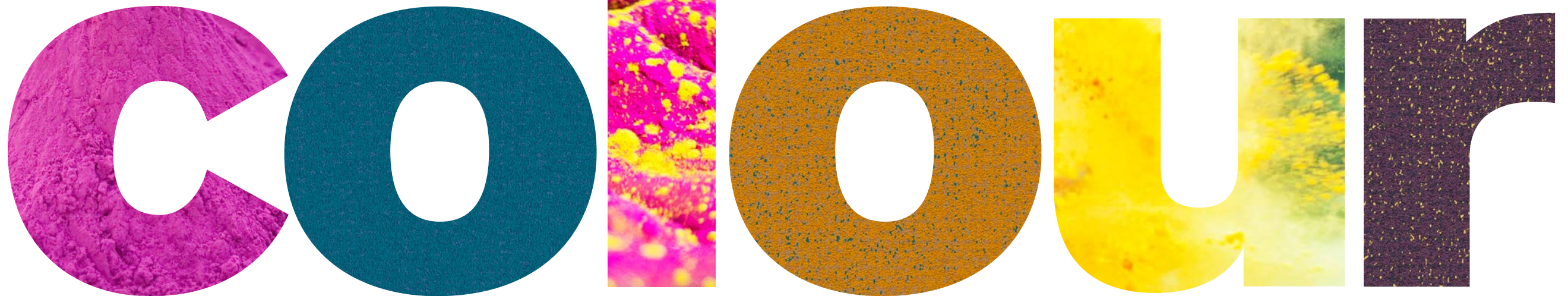


sprinkle



spray

Inspired by the experimental nature of artists,
from traditional to contemporary,
who explore the emotional language of



to encourage greater artistic expression.

ChromaFlex™

Soft graduating tones weave their way through strong, robust forms, creating a dynamic contrast between textures, pigments and forms. A colourful celebration of bold profiles and free-flowing organic styles.

A collection inspired by the experimental nature of artists, from traditional to contemporary, who explore the emotional language of colour to encourage greater artistic expression.

ChromaFlex is an opportunity to use a rich colour palette to study the relationship between light and shade, texture and tone, colour and emotion.

An opportunity to be more playful with colour, a modular system with 3 design options that work together from Base to Dots 1 to Dots 2.

Like all Interface products, the ChromaFlex collection is 100% carbon neutral. Leveraging the power of design to help encourage a low carbon future.



PRODUCT CHROMABASE **COLOUR** BLACK, BLUE NIGHTS, BLUEPRINT, NEWPORT, DRAGON FLY, PLUM, CHERRY, CAJUN, FIRE ENGINE, SPICE, GOLD, CITRON, LIME **INSTALLED** DESIGN BY TILE

ChromaFlex is breaking new ground, a dynamic collection available in both planks and squares. A system designed to work with our entire range, enabling you to breathe new life into existing concepts and use bursts of colour to tell the hidden story of architecture in new and inspiring ways.



Base

ChromaBase features 24 block colours, in bright and neutral tones, to help articulate the space.



PRODUCT CHROMABASE **COLOUR** BONE, DRIFTWOOD **INSTALLED** DESIGN BY TILE
PRODUCT CHROMABASE **COLOUR** PARCHMENT **INSTALLED** ASHLAR

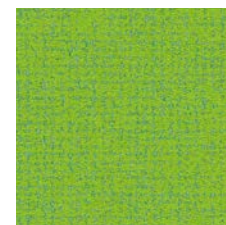


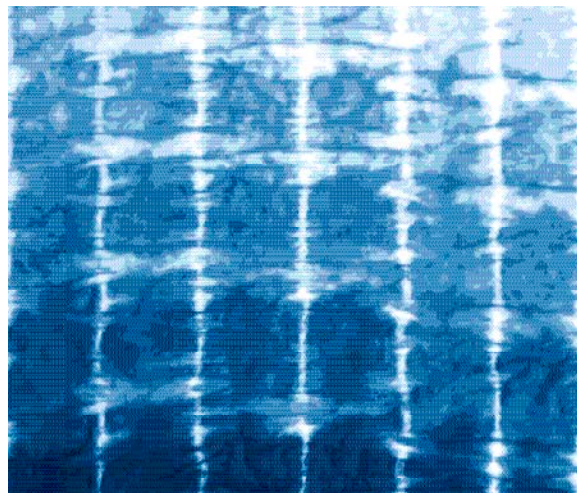
CARPET PRODUCT CHROMABASE **COLOUR** SPICE **INSTALLED** MONOLITHIC
LVT PRODUCT STUDIO SET **COLOUR** ESPRESSO **INSTALLED** ASHLAR





CARPET TILE CHROMABASE **COLOUR** CHARCOAL, LIME, CHERRY **INSTALLED** ASHLAR
CARPET PLANK CHROMABASE **COLOUR** SPICE **INSTALLED** DESIGN BY TILE





CARPET PRODUCT CHROMABASE **COLOUR** BLUEPRINT, MAKO **INSTALLED** ASHLAR
LVT PRODUCT TEXTURED STONES **COLOUR** COOL POLISHED CEMENT **INSTALLED** MONOLITHIC

Dots

Create tonal drift alongside the base by using the sparse organic movement of ChromaDots 1. Further inject a spirited acceleration of tone with ChromaDots 2, allowing colours to drift and merge, bringing them to life.



splash

ChromaBase



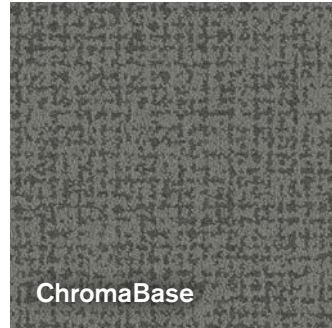
sprinkle

ChromaDots 1

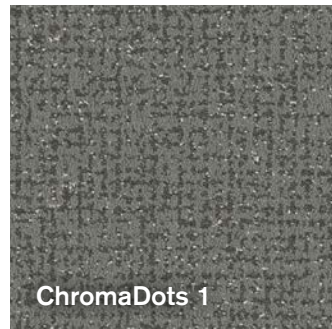


spray

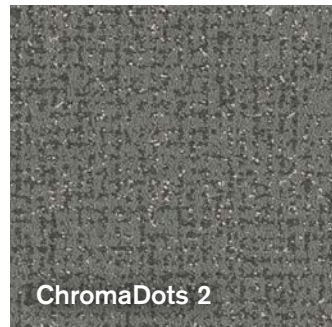
ChromaDots 2



ChromaBase



ChromaDots 1



ChromaDots 2

Creating Tonal Drift

ChromaFlex is designed to look at the bigger picture, how it's going to interact within the environment and with the people that use it. A flexible framework that enables you to install three diverse styles with one process.

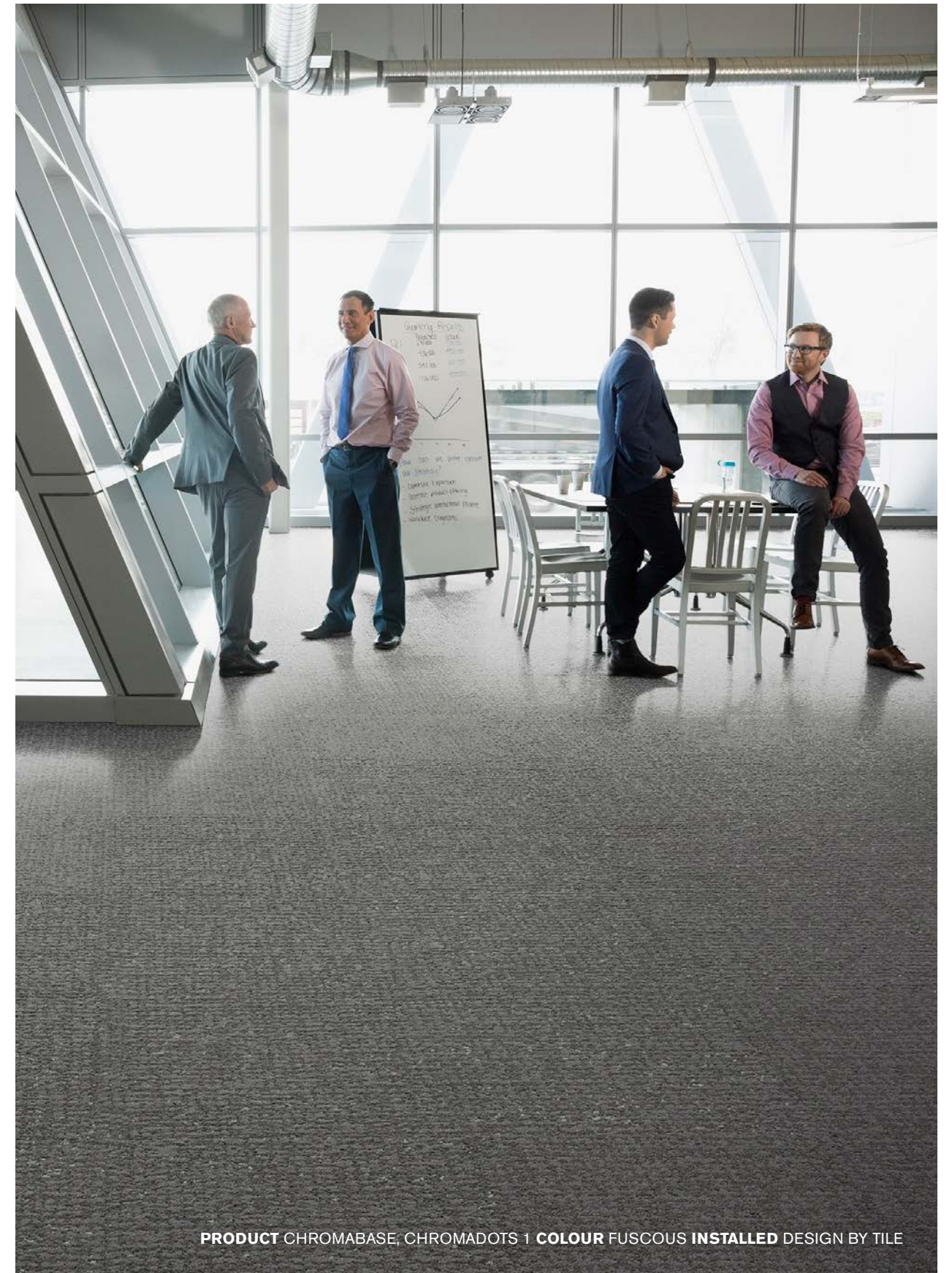
The ChromaFlex colour palette encourages experimentation, integrating 24 BASE tiles with 12 from DOTS 1 and 12 from DOTS 2.

Tonal drift emerges from the strong foundations of the BASE pattern, a diverse array of vibrant and neutral block tones.

The introduction of DOTS 1, a sparse, organic design, encourages these rich, solid shapes to smoothly transition into free-flowing forms.

DOTS 2, a spirited and energetic acceleration of tone, enables the design to transition smoothly into more robust, full colour formations.

A chance to be more playful with colour, allowing colours to drift and merge. To stimulate movement and bringing colours to life.





PRODUCT CHROMABASE (PLANK), CHROMADOTS 1 (PLANK), CHROMADOTS 2 (PLANK)
COLOUR DRAGON FLY **INSTALLED** ASHLAR



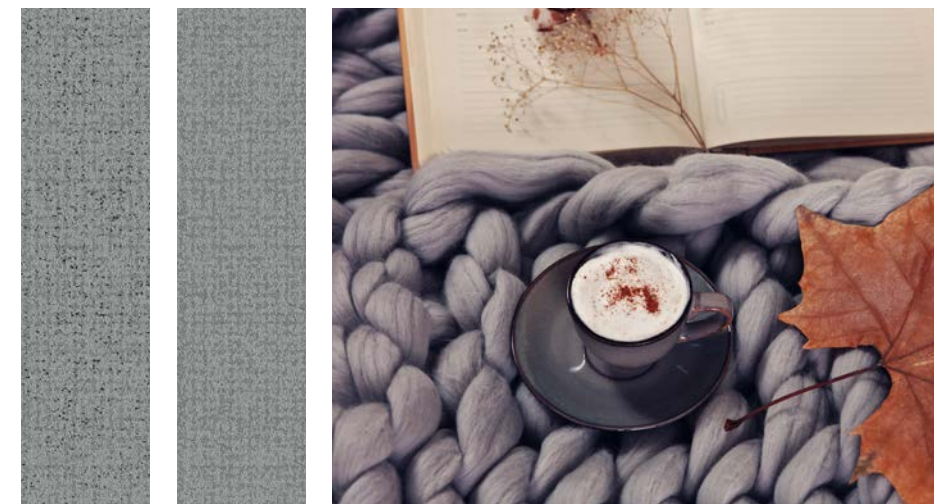
PRODUCT CHROMABASE (SQUARE) CHROMADOTS 2 (PLANK) **COLOUR** SLATE **INSTALLED** ASHLAR
PRODUCT STEP THIS WAY **COLOUR** ASH **INSTALLED** MONOLITHIC



PRODUCT CHROMABASE, CHROMADOTS 1, CHROMADOTS 2. COLOUR BLACK INSTALLED ASHLAR
PRODUCT CHROMABASE COLOUR FIRE ENGINE INSTALLED ASHLAR



PRODUCT CHROMABASE, CHROMADOTS 1 **COLOUR** SLATE **INSTALLED** ASHLAR
PRODUCT MERGED HUES **COLOUR** REEF **INSTALLED** DESIGN BY TILE



ChromaBase Colour Range



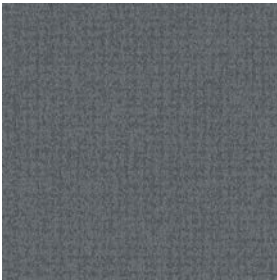
2468001 BLACK



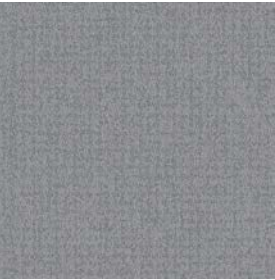
2468002 NIGHTWATCH



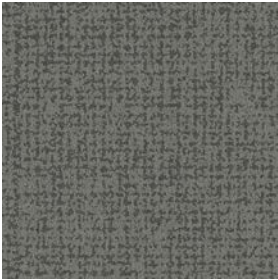
2468003 CHARCOAL



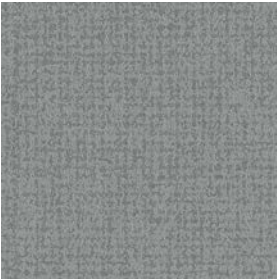
2468004 MAKO



2468005 PIGEON



2468006 FUSCOUS



2468007 SLATE



2468008 SHARK



2468009 JAVA



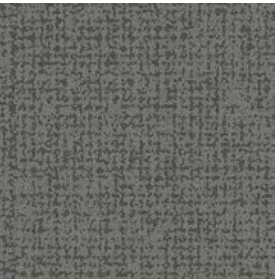
2468010 PARCHMENT



2468011 DRIFTWOOD



2468012 BONE



2468013 BLUE NIGHTS



2468014 BLUEPRINT



2468015 NEWPORT



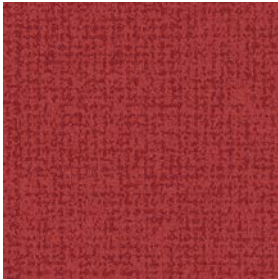
2468016 DRAGON FLY



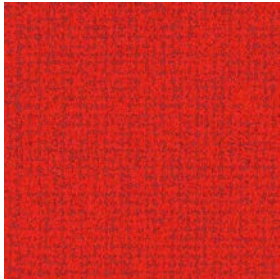
2468017 PLUM



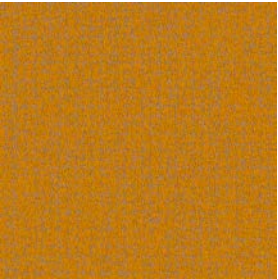
2468018 CHERRY



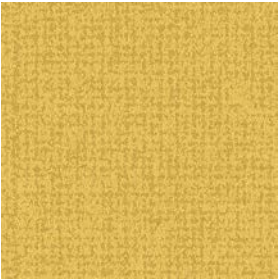
2468019 CAJUN



2468020 FIRE ENGINE



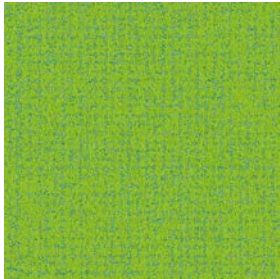
2468021 SPICE



2468022 GOLD



2468023 CITRON



2468024 LIME

Every colour is available as Squares (50 x 50cm) and Planks (25 x 100cm)

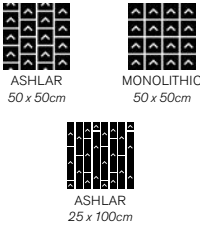


ChromaBase Specification

Style Code	2468
Product Construction	Tufted Textured Loop Pile
Yarn System	100% Solution Dyed Nylon
Machine Gauge	1/10
Pile Thickness	3.0 ± 0.5mm
Total Thickness	7.0 ± 0.5mm
Tile Size	50 x 50cm, 25 x 100cm
Area of Use	Commercial - General Use
ACCS Grading	Commercial Heavy Duty & Stairs
Lifetime Antimicrobial	Intersept®

[View the full product specification on interface.com](#)

Installation Methods



Chroma Dots 1 Colour Range

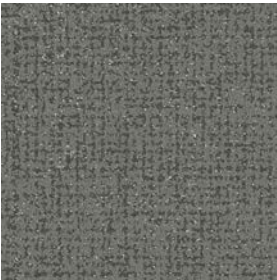
Every colour is available as Squares (50 x 50cm) and Planks (25 x 100cm)



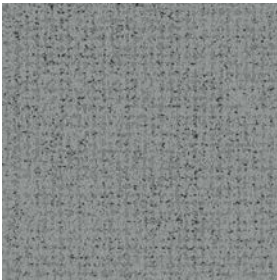
2469001 BLACK



2469002 CHARCOAL



2469003 FUSCOUS



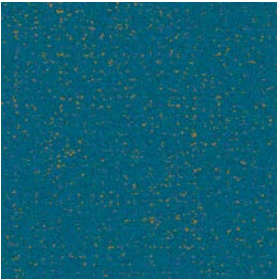
2469004 SLATE



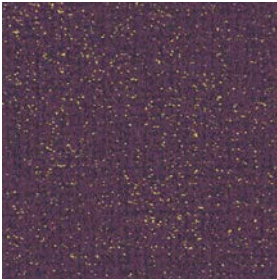
2469005 PARCHMENT



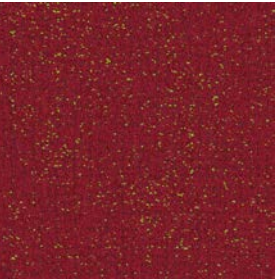
2469006 BONE



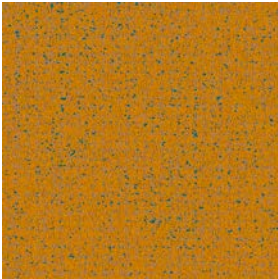
2469007 DRAGON FLY



2469008 PLUM



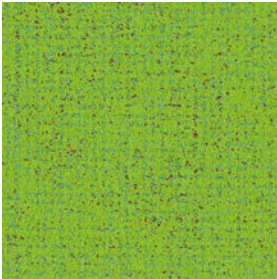
2469009 CHERRY



2469010 SPICE



2469011 GOLD



2469012 LIME

Chroma Dots 1 Specification

Style Code	2469
Product Construction	Tufted Textured Loop Pile
Yarn System	100% Solution Dyed Nylon
Machine Gauge	1/10
Pile Thickness	3.0 ± 0.5mm
Total Thickness	7.0 ± 0.5mm
Tile Size	50 x 50cm, 25 x 100cm
Area of Use	Commercial - General Use
ACCS Grading	Commercial Heavy Duty & Stairs
<i>(Australia & New Zealand Only)</i>	
Lifetime Antimicrobial	Intersept®

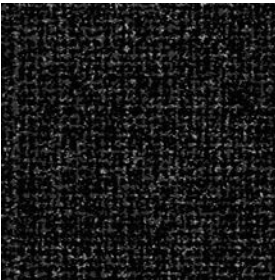
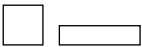
View the full product specification on [interface.com](#)

Installation Methods

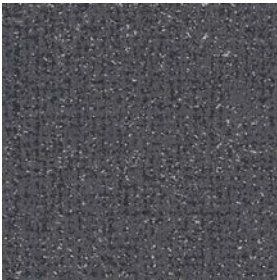


Chroma Dots 2 Colour Range

Every colour is available as Squares (50 x 50cm) and Planks (25 x 100cm)



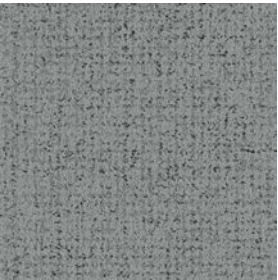
2479001 BLACK



2479002 CHARCOAL



2479003 FUSCOUS



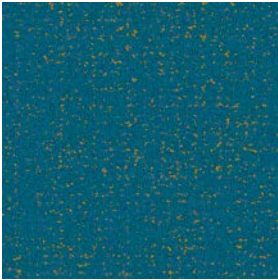
2479004 SLATE



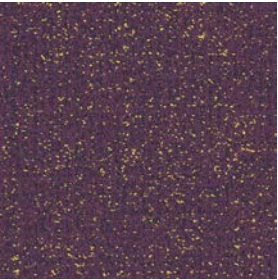
2479005 PARCHMENT



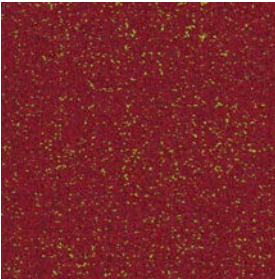
2479006 BONE



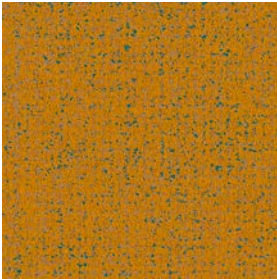
2479007 DRAGON FLY



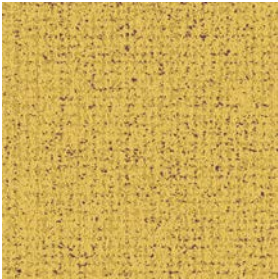
2479008 PLUM



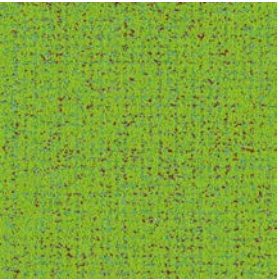
2479009 CHERRY



2479010 SPICE



2479011 GOLD



2479012 LIME

Chroma Dots 2 Specification

Style Code	2479
Product Construction	Tufted Textured Loop Pile
Yarn System	100% Solution Dyed Nylon
Machine Gauge	1/10
Pile Thickness	3.0 ± 0.5mm
Total Thickness	7.0 ± 0.5mm
Tile Size	50 x 50cm, 25 x 100cm
Area of Use	Commercial - General Use
ACCS Grading	Commercial Heavy Duty & Stairs
<i>(Australia & New Zealand Only)</i>	
Lifetime Antimicrobial	Intersept®

View the full product specification on [interface.com](#)

Installation Methods



Why Our Modular Flooring?



Modular Flooring
Performance and flexibility. Interface's standard backing systems set the industry standard for modular performance. Tiles stay on the floor with no upcurl, no tapping and no rippling effect, yet are easy to selectively replace. Our modular carpet is easier to handle than bulky roll carpet and produces an average of just 2-5% waste compared to roll carpet's average of 15% . And it installs seamlessly with our LVT, no transition strips needed.



Carbon Neutral Floors™
Create a climate fit for life. All Interface flooring sold globally is third party verified carbon neutral across the entire product lifecycle. We've taken a holistic approach to achieve carbon neutrality, first through reducing the carbon footprint of our products and then using carbon offsets for the remainder, including the emissions from raw materials, our manufacturing processes and product use to end of life.



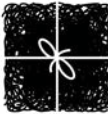
TacTiles®
No glue installation. Our revolutionary TacTiles installation system eliminates the need for glue, adhering tiles securely together to form a floor that “floats” for greater flexibility, easier replacement and long-term performance. The result? Less mess, less waste and virtually no VOCs, not to mention an environmental footprint that is over 90% lower than that of traditional glue adhesives.



Intersept®
Mold protection. Our proprietary preservative, Intersept, protects our modular carpet against mould growth and odour-causing bacteria—guaranteed. Intersept treated carpet, with proper maintenance, shows no mould or bacterial growth when tested as per the ASTM E2471 Standard Test Method. Intersept is EPA-approved for safe use in carpet, water insoluble and contains no halogens, heavy metals, phenols or formaldehyde.



Protekt®
Stain protection. The life and performance of your flooring is extended with Protekt, our patented stain resistant coating. Protekt uses advanced technology to provide a lasting barrier against permanent soiling and staining, which simplifies the cleaning process and enhances the longevity of your carpet.



ReEntry
At Interface, an *end of life solution* of our products is a reality. ReEntry is our innovative programme to reclaim materials used in our product. Taking back our product at end of life is a service we provide our customers to ensure that none of the products they use will end up in landfill. Whether it is recycling into new product or re-purposing, we see our customer's waste as an opportunity for new product life.



Health Product Declaration (HPD) –
A transparency tool for evaluating whether a product supports Green Chemistry. As part of our work on Health and Materials, Interface continuously reduces the environmental and health impacts of our products through elimination of materials of concern.



15-Year Warranty
Interface products are warranted for 15 years against excessive surface wear, edge ravel, backing separation, shrinking, stretching and static electricity even under castor chair conditions.



Local Manufacturing
We combine local responsiveness with a global experience. Being part of the same communities as our customers, we foster collaborative, committed, and productive relationships. Our carpet tiles are manufactured in Australia and China, contributing to local economies and the environment.

All Interface manufacturing facilities in the Asia Pacific region maintain registration to ISO 9001 Quality Management Systems and ISO 14001 Environmental Management Systems.

Third Party Certifications



Environmental Product Declaration (EPD)
The Environmental Product Declaration (EPD) is a third party verified environmental certification classified as Type III that quantifies and verifies the lifecycle impacts of products and goods according to the International Standards Organization (ISO) 14025, 14040, 14044 and EN 15804. EPDs help customers that are environmentally driven to evaluate the performance of a product and to make the best decision when choosing a product. All Interface products have EPDs.



Global GreenTag GreenRate - Level A
Global GreenTag's GreenRate certification is a product rating system recognised by the Green Building Council of Australia, New Zealand and South Africa. It has been set up to meet the criteria of the Green Star® "Sustainable Products" credits. All Interface products are certified "Level A".



Environmental Certification Scheme - Level 4
ECS-certified carpet manufacturers must adhere to a code of practice that details performance standards for raw materials, manufacturing, in-service use and end-of-life treatment. Interface flooring holds the highest grading under ECS.



NSF Certification
NSF International develops public health standards and certification programs that help protect the world's food, water, consumer products and environment. Interface carpet tile products are certified “Gold”.



CRl Green Label Plus
The Carpet and Rug Insitute (CRI) Green Label Plus sets higher standards for indoor air quality and ensures that customers are purchasing the very lowest emitting products on the market. Interface Carpet Tiles and TacTiles have fulfilled the requirements for this certification.



Singapore Green Building Product (SGBP)
The SGBP certification is designed to evaluate and certify building products that meet specific sustainability and environmental performance criteria. The certification scheme helps building professionals identify products that are sustainable and more carbon efficient. Interface carpet tile products are certified “Leader” and LVT products are at “Excellent” Level.



Best Practice Guidelines for PVC
A comprehensive standard for better PVC developed by the Green Building Council of Australia under its Green Star programme. Interface holds Lloyd's Statement of Compliance (Green Building Council of Australia Best Practice Guidelines 2013) for Best Practice PVC for all products made in Australia.

Our EPDs and certifications contribute credits towards Green Building Council's Green Star® rating system.

Green Star credits are approved by the Green Building Councils of Australia and New Zealand. The internationally-recognised Green Star rating system provides independent verification that a building or community project is sustainable. Developed by the Green Building Council of Australia, Green Star is Australia's only national, voluntary, sustainability rating system for buildings and communities.

Production specifications are subject to normal manufacturing tolerances and may be changed without notice. The visibility of joints may vary based on colour and pattern. Slight variation in colour among different production lots are normal and should be considered in the overall installation plan. We have tried our very best to accurately represent product colours. However, due to the nature of printed materials, colour of actual products may vary slightly. Please request a sample to see actual product colour. Products covered by manufacturer's written warranty only. All other warranties, including without limitation any implied warranties of merchantability or fitness for particular purpose, are hereby disclaimed. Contact your representative for written warranty information.



Carbon Neutral Floors™

www.interface.com

Australia

Interface Australia
local toll free: 1800 804 361

India

Interface India
tel: +91 80 4613 1313

South East Asia

Interface Asia
tel: +65 6478 1510

South Korea

Interface South Korea
tel: +82 2 555 1734

Japan

Interface Japan
tel: +81 3 5733 5211

Beijing

Interface China
tel: +86 10 6590 7810

Hong Kong

Interface China
tel: +852 2802 0838

Shanghai

Interface China
tel: +86 21 6340 3868

11/2023
SF0123T0



Climate change is undeniable. And reversible. Our mission is to prove it. Join the #ClimateTakeBack and help create a climate fit for life.