



Chelsea Estate Collection

Edge
Vessel
Shed
Gridlock
Riverwalk

Interface

Chelsea Estate™ Collection

Timeless, yet modern.

Some things never go out of style. They're influential, but adaptable, like a 19th century brownstone perfectly at ease with the most modern apartment building.

Diversity is exciting, and like its eclectic namesake, our Chelsea Estate collection will keep you interested. Inspired by fashion house aesthetics with sophisticated lines and nubby bouclés and tweeds, Vessel™, Edge™, Riverwalk™, Gridlock™ and Shed™ play with texture, pattern and sheen in a refined, neutral palette to create the richness of high-end broadloom with the performance and flexibility of modular carpet tile.

When you specify flooring from Interface, you're selecting products that are carbon neutral across their full product life cycle.



PRODUCT RIVERWALK COLOR 106835 NATURAL PRODUCT SHED COLOR 106853 NATURAL
PRODUCT EDGE COLOR 106824 PEPPER INSTALLED ASHLAR

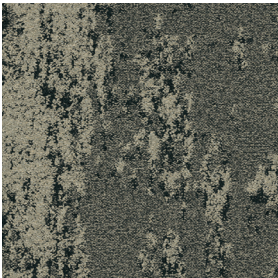




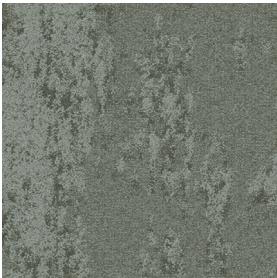
PRODUCT GRIDLOCK COLOR 106834 BLACK INSTALLED ASHLAR
PRODUCT VESSEL COLOR 106849 STEEL PRODUCT EDGE COLOR 106822 STEEL INSTALLED MONOLITHIC



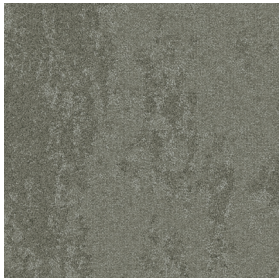
Edge™ Colorline



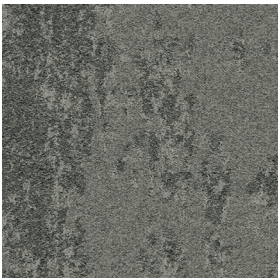
106817 NATURAL



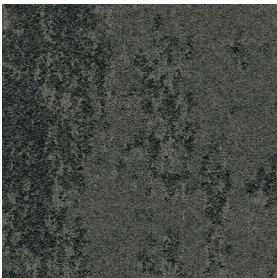
106818 MIST



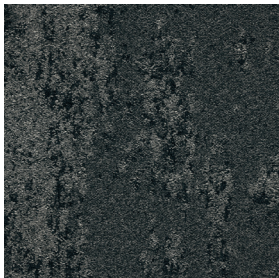
106819 AGATE



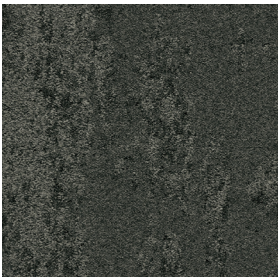
106820 GRANITE



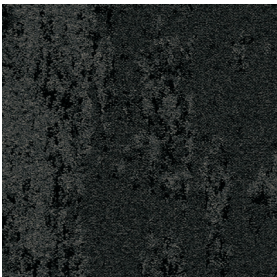
106821 GRAVEL



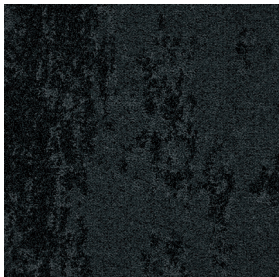
106822 STEEL



106823 IRON



106824 PEPPER



106825 BLACK

Specifications

| | |
|-------------------------|-------------------------------|
| Modular, 50cm x 50cm | 161930250G |
| Backing System | CQuest™GB |
| Yarn Manufacturer | Aquafil |
| Yarn System | 100% Recycled Content Nylon |
| Dye Method | 100% Solution Dyed |
| Construction | Tufted Sheared |
| Preservative Protection | Intersept® |
| Soil/Stain Protection | Protekt ² ™ |
| Pile Thickness | 0.086 in., 2.2 mm |
| Pile Density | 10,884 |
| Total Recycled Content | 84% |
| Indoor Air Quality | CRI Green Label Plus #GLP0820 |

Installation Methods



ASHLAR



BRICK



MONOLITHIC

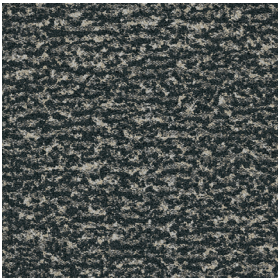


QUARTER-TURN



BROWSE IMAGES
ORDER SAMPLES

Vessel™ Colorline



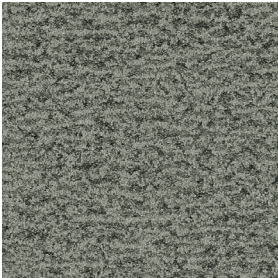
106844 NATURAL



106845 MIST



106846 AGATE



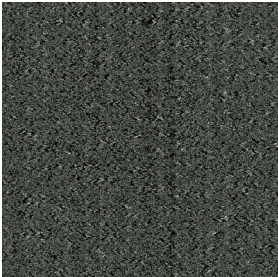
106847 GRANITE



106848 GRAVEL



106849 STEEL



106850 IRON



106851 PEPPER



106852 BLACK

Specifications

| | |
|-------------------------|-------------------------------|
| Modular, 50cm x 50cm | 161970250G |
| Backing System | CQuest™GB |
| Yarn Manufacturer | Aquafil |
| Yarn System | 100% Recycled Content Nylon |
| Dye Method | 100% Solution Dyed |
| Construction | Tufted Sheared |
| Preservative Protection | Intersept® |
| Soil/Stain Protection | Protekt ² ™ |
| Pile Thickness | 0.103 in., 2.6 mm |
| Pile Density | 9,786 |
| Total Recycled Content | 84% |
| Indoor Air Quality | CRI Green Label Plus #GLP0820 |

Installation Methods



ASHLAR



BRICK



MONOLITHIC



QUARTER-TURN



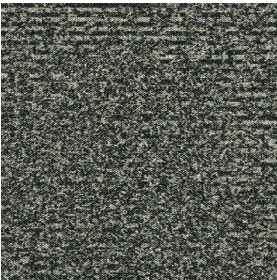
BROWSE IMAGES
ORDER SAMPLES



CARPET PRODUCT VESSEL COLOR 106848 GRAVEL INSTALLED MONOLITHIC
LVT PRODUCT NATURAL WOODGRAINS COLOR A00204 BEECH INSTALLED ASHLAR



Shed™ Colorline



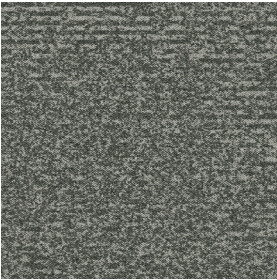
106853 NATURAL



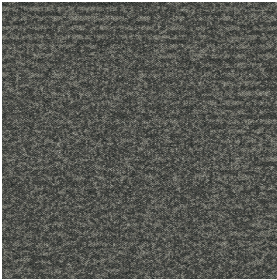
106854 MIST



106855 AGATE



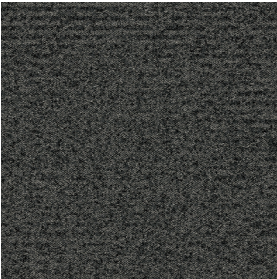
106856 GRANITE



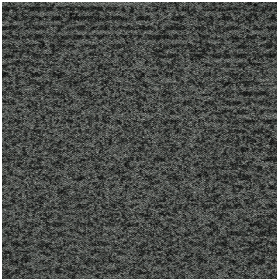
106857 GRAVEL



106858 STEEL



106859 IRON



106860 PEPPER



106861 BLACK

Specifications

| | |
|-------------------------|-------------------------------|
| Modular, 50cm x 50cm | 161980250G |
| Backing System | CQuest™GB |
| Yarn Manufacturer | Aquafl |
| Yarn System | 100% Recycled Content Nylon |
| Dye Method | 100% Solution Dyed |
| Construction | Tufted Sheared |
| Preservative Protection | Intersept® |
| Soil/Stain Protection | Protek ² ™ |
| Pile Thickness | 0.126 in., 3.2 mm |
| Pile Density | 8,286 |
| Total Recycled Content | 85% |
| Indoor Air Quality | CRI Green Label Plus #GLP0820 |

Installation Methods



ASHLAR

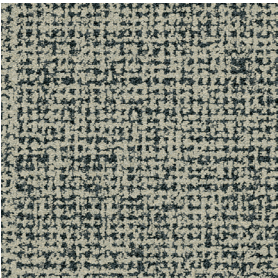


QUARTER-TURN

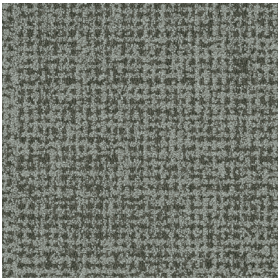


BROWSE IMAGES
ORDER SAMPLES

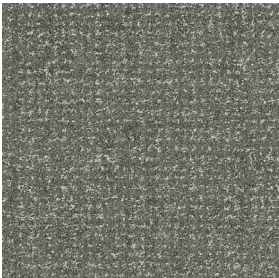
Gridlock™ Colorline



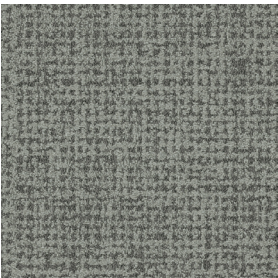
106826 NATURAL



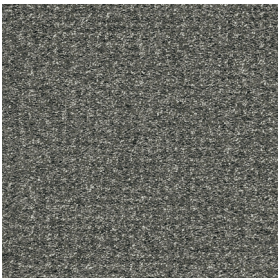
106827 MIST



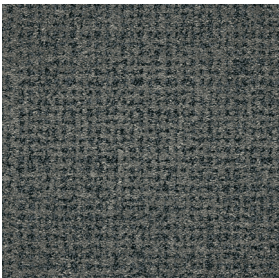
106828 AGATE



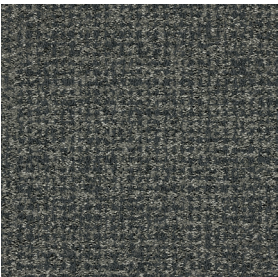
106829 GRANITE



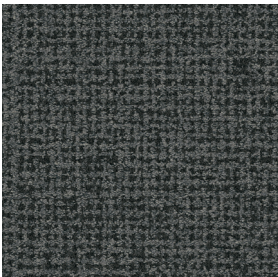
106830 GRAVEL



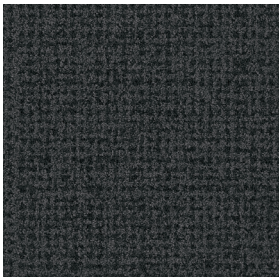
106831 STEEL



106832 IRON



106833 PEPPER



106834 BLACK

Specifications

| | |
|-------------------------|-------------------------------|
| Modular, 50cm x 50cm | 161940250G |
| Backing System | CQuest™GB |
| Yarn Manufacturer | Aquafl |
| Yarn System | 100% Recycled Content Nylon |
| Dye Method | 100% Solution Dyed |
| Construction | Tufted Sheared |
| Preservative Protection | Intersept® |
| Soil/Stain Protection | Protekt ² ™ |
| Pile Thickness | 0.108 in., 2.7 mm |
| Pile Density | 9,667 |
| Total Recycled Content | 85% |
| Indoor Air Quality | CRI Green Label Plus #GLP0820 |

Installation Methods



BRICK



QUARTER-TURN



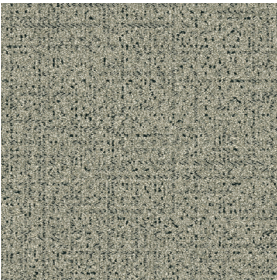
BROWSE IMAGES
ORDER SAMPLES



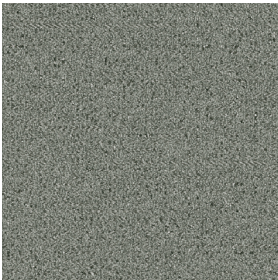
PRODUCT GRIDLOCK **COLORS** 106829 GRANITE, 106830 GRAVEL **INSTALLED** BRICK



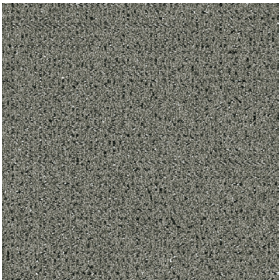
Riverwalk™ Colorline



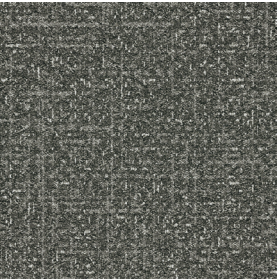
106835 NATURAL



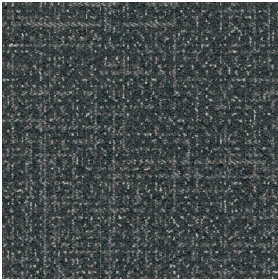
106836 MIST



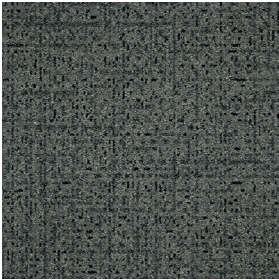
106837 AGATE



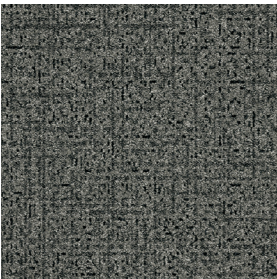
106838 GRANITE



106839 GRAVEL



106840 STEEL



106841 IRON



106842 PEPPER



106843 BLACK

Specifications

| | |
|-------------------------|-------------------------------|
| Modular, 50cm x 50cm | 161960250G |
| Backing System | CQuest™GB |
| Yarn Manufacturer | Aquafil |
| Yarn System | 100% Recycled Content Nylon |
| Dye Method | 100% Solution Dyed |
| Construction | Tufted Pattern Loop |
| Preservative Protection | Intersept® |
| Soil/Stain Protection | Protekt ² ™ |
| Pile Thickness | 0.081 in., 2.1 mm |
| Pile Density | 11,111 |
| Total Recycled Content | 84% |
| Indoor Air Quality | CRI Green Label Plus #GLP0820 |

Installation Methods



ASHLAR



QUARTER-TURN



BROWSE IMAGES
ORDER SAMPLES





PRODUCT GRIDLOCK **COLOR** 106829 GRANITE **INSTALLED** BRICK
COLORS 106828 AGATE, 106827 MIST **INSTALLED** PATTERN BY TILE

Why Our Modular Flooring?



Modular Flooring

Performance and flexibility.

Interface's standard backing systems set the industry standard for modular performance. Tiles stay on the floor with no upcurl, no tapping and no rippling effect, yet are easy to selectively replace. Our modular carpet is easier to handle than bulky roll carpet and produces an average of just 3-4% waste compared to roll carpet's average of 14%. And it installs seamlessly with our LVT, no transition strips needed.



TacTiles™

No glue installation. Our revolutionary TacTiles installation system eliminates the need for glue, adhering carpet tiles securely together to form a floor that "floats" for greater flexibility, easier replacement and long-term performance. The result? Less mess, less waste and virtually no VOCs, not to mention an environmental footprint that is over 90% lower than that of traditional glue adhesives. TacTiles are approved for use on GlasBac™, GlasBacRE, CQuest™GB, Graphlar™ and Graphlex™.



Intersept®

Mold protection. Our proprietary preservative, Intersept, protects our modular carpet against mold growth and odor-causing bacteria—guaranteed. Intersept treated carpet, with proper maintenance, shows no mold or bacterial growth when tested per the ASTM E2471 Standard Test Method. Intersept is EPA approved for safe use in carpet, water insoluble and contains no halogens, heavy metals, phenols or formaldehyde. Intersept is standard in Interface carpet tile products backed with GlasBac, GlasBacRE, CQuestGB, ReadyBac™, and CushionBac Renew™.

Samples

Order samples at interface.com. You'll receive email order confirmations, 24/7 access to order status and more. Not near a computer? You can also request samples by calling one of the numbers below.

| | |
|----------------|----------------|
| United States | Canada |
| 1.877.605.1500 | 1.866.398.3192 |

| | |
|------------------|-------------------|
| Brazil | Latin America |
| + 5511.2196.0900 | + 52.55.6395.5100 |

interface.com

Register at interface.com to:

- Browse products and order samples
- View carpet in a variety of room scenes
- Browse floor designs, change colors, view as a grid or in a room, download and share
- Check order status and inventory availability
- Sign up to get the latest information on Interface products and news

InterCircle Sample Return

Help us close the loop on the carpet sampling process. Through our InterCircle Sample Return program, sample materials stay out of the landfill and are re-used as samples until it is time to recycle them into new carpet. By reducing sample production material and diverting old materials from the landfill, we can reduce our overall environmental footprint.

Call 1.877.605.1500 (U.S.) or 1.866.398.3192 (Canada) to order a sample return bag with a prepaid return label.



ReEntry™

Keep flooring out of landfills. Through our ReEntry program, we reclaim our carpet tile and Sound Choice™ LVT. Vinyl backed carpet tile is recycled into new CQuest™GB carpet tile backing. The result? Carpet tile products with up to 85% total recycled content, including as much as 25% post-consumer content.



Sustainability Transparency

Transparency and certified sustainability leadership come standard on Interface products, including published ingredients in HPDs (Health Product Declarations) and published EPDs (Environmental Product Declarations), which are based on full life cycle assessment (LCA). And, Interface carpet products are certified to the NSF 140 Sustainable Carpet Assessment Standard. Additionally, Interface flooring and recommended adhesives are 3rd party certified for low VOC emissions in compliance with California Department of Public Health (CDPH) Standard Method v1.2–2017. Carpet products made in our US facilities are made with 99% renewable energy.



Carbon Neutral Floors™

The flooring products that we sell, including carpet tile, are carbon neutral across their full product life cycle through our third party verified Carbon Neutral Floors™ program. To find out more, visit interface.com/carbonneutralfloors.



Environmental Product Declaration (EPD) –

A statement of product ingredients and environmental impacts over the entire life cycle of a product. A comprehensive life cycle assessment (LCA) is performed to ISO standards to develop an EPD, after which both the EPD and LCA must be third party verified.



Gold Certified
NSF 140 Sustainable Carpet Assessment Standard

Sustainable Assessment for Carpet – The only carpet sustainability standard in North America that evaluates the environmental impact of carpet for its entire lifecycle.



CRI Green Label Plus – An independent testing program that identifies carpet and adhesives with very low emissions of VOCs to help improve indoor air quality.



RECYCLED
Paper made from
recycled material
FSC® C009723



PLEASE RECYCLE

Printed on 50% post consumer waste (PCW) fiber manufactured using wind power.

All product specifications reflect averages derived from product sample testing, are subject to normal manufacturing and testing tolerances and inherent pattern variances, and may be changed without notice. For more information about these and other important attributes of the product(s) described herein, including recycled content and product warranty information, please see interface.com/disclaimer.

We have tried our very best to accurately represent product colors. However, due to the nature of printed materials, color of actual products may vary slightly. Please request a sample to see actual product color.

interface.com

United States Headquarters

1280 West Peachtree Street NW
Atlanta, GA 30309
1.800.634.6032

Canadian Headquarters

233 Lahr Drive
Belleville, ON K8N 5S2
1.800.267.2149 ext.52128

Brazilian Headquarters

Av. Das Nações Unidas 14261
25 andar, sala 25 -122, Brooklin Paulista
São Paulo SP 04578 - 000
Brasil
+5511.2196.0900

Latin American Headquarters

Montes Urales # 415 Piso 6
Lomas de Chapultepec
Miguel Hidalgo, CDMX,
11000 Mexico
+ 52.55.2791.6812

