

# Ceremony Collection

[www.interface.com](http://www.interface.com)

**United States Headquarters**

1503 Orchard Hill Road  
LaGrange, GA 30240  
1.800.336.0225 ext.6511

**Canadian Headquarters**

233 Lahr Drive  
Belleville, ON K8N 5S2  
1.800.267.2149 ext.2128

**Brazilian Headquarters**

Rua Surubim, 577 - Conjuntos  
73/74 7º Andar  
04571-050 - São Paulo - SP  
+ 55 11 2196 0900

**Latin American Headquarters**

Montes Urales # 415 Piso 6  
Col. Lomas de Chapultepec  
México City, D.F. 11000  
Mexico  
+ 52 55 6395 5100

CIM # IFS00703 02/2016



**Mission Zero®**

our promise to eliminate any  
negative impact our company  
may have on the environment  
by the year 2020.

**Interface®**



Ceremony™ Collection

Ceremonies are in all aspects of our lives. We rely upon them to usher in new beginnings, to celebrate a life well lived, to be mindful of life's simplest gifts.

Ceremony Collection reflects all the formality and graciousness attendant in moments of ritual. The fullest of the three styles, CE173, mingles carved layers with uniquely textured yarns to create a complex and luxurious finish, while CE171 is a tribute to clarity and the unadorned aesthetic. Between these two, CE172, marries a bit of the variation of the first with the utter simplicity of the third. Together or alone, these three textures will carry a thread of refinement throughout the interior where cream and black are enough accent in a pure, neutral palette.

Ceremony Collection uses 100% recycled nylon made in part from reclaimed fishing nets. In this way, Ceremony is more than simply enriching the design of your space, it is part of a much bigger story of a new way to do business that includes unlikely partners and restores a threatened environment. For more information go to [Net-Works.com](http://Net-Works.com)













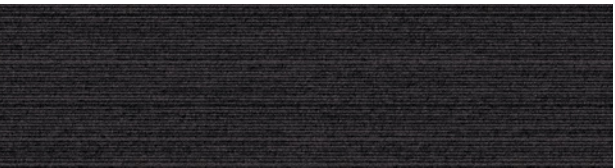






PRODUCT CE171 COLOR 104950 SAMURAI INSTALLED ASHLAR

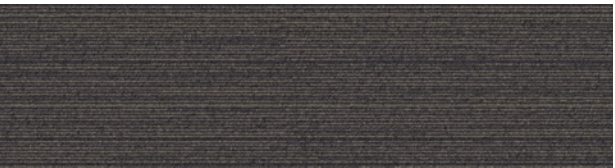
## CE171 Colorline



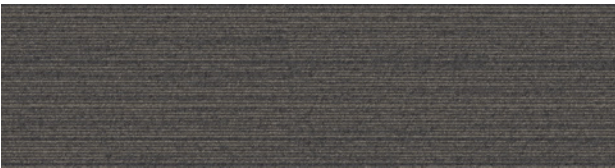
104946 NORI



104947 MIKADO



104948 ORIGAMI



104949 KIMONO



104950 SAMURAI



104951 BENTO



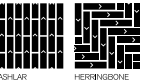
104952 KABUKI



104953 HAIKU

## Specifications

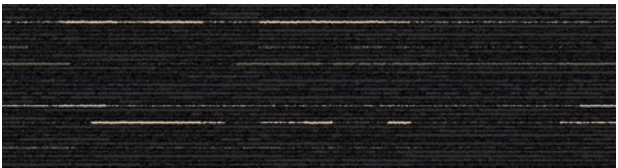
Modular, 25cm x 1m	127950AK00
Backing System	GlasBac® Tile
Yarn Manufacturer	Aquafil
Yarn System	100% Recycled Content Type 6 Nylon
Color System	100% Solution Dyed
Construction	Tufted Pattern Loop
Lifetime Antimicrobial	Intersept®
Soil/Stain Protection	Protekt2®
Pile Thickness	0.100 in., 2.5 mm
Pile Density	6,480
Total Recycled Content	62%
Indoor Air Quality	CRI Green Label Plus #GLP0820



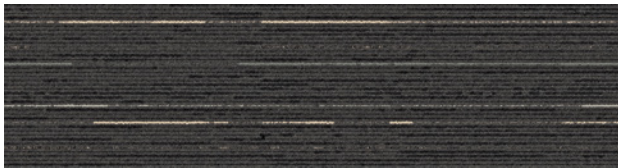




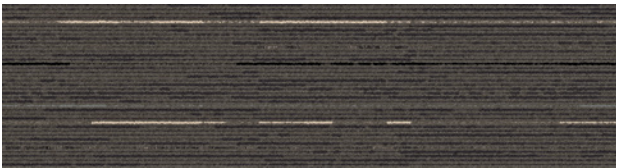
## CE172 Colorline



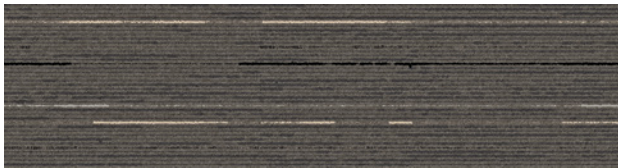
104954 NORI



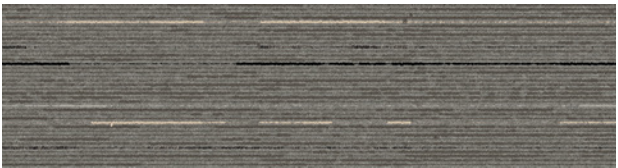
104955 MIKADO



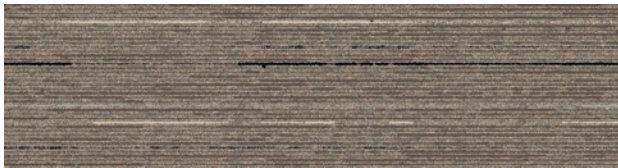
104956 ORIGAMI



104957 KIMONO



104958 SAMURAI



104959 BENTO



104960 KABUKI



104961 HAIKU

## Specifications

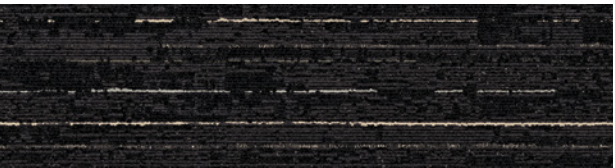
Modular, 25cm x 1m	138880AK00
Backing System	GlasBac® Tile
Yarn Manufacturer	Aquafil
Yarn System	100% Recycled Content Type 6 Nylon
Color System	100% Solution Dyed
Construction	Tufted Tip Shear
Lifetime Antimicrobial	Intersept®
Soil/Stain Protection	Protekt2®
Pile Thickness	0.100 in., 2.5 mm
Pile Density	8,280
Total Recycled Content	63%
Indoor Air Quality	CRI Green Label Plus #GLP0820



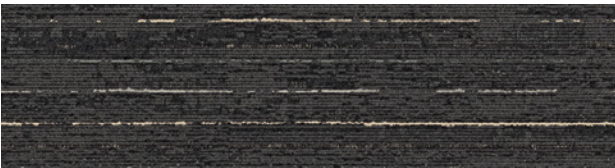




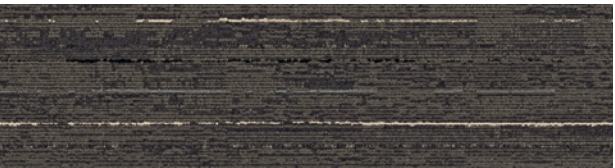
CE173 Colorline



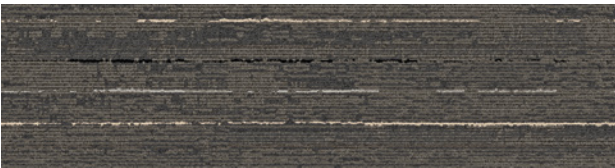
104962 NORI



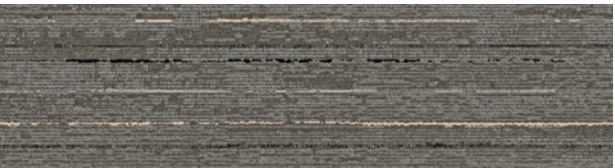
104963 MIKADO



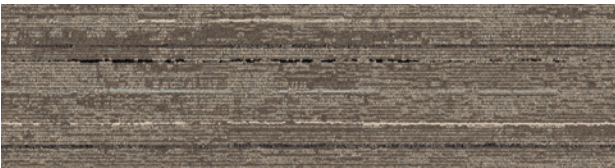
104964 ORIGAMI



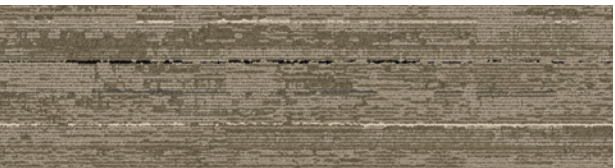
104965 KIMONO



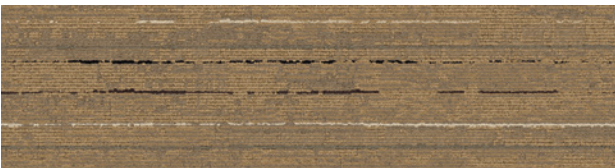
104966 SAMURAI



104967 BENTO



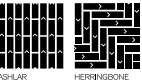
104968 KABUKI



104969 HAIKU

Specifications

Modular, 25cm x 1m	127960AK00
Backing System	GlasBac® Tile
Yarn Manufacturer	Aquafil
Yarn System	100% Recycled Content Type 6 Nylon
Color System	100% Solution Dyed
Construction	Tufted Sheared
Lifetime Antimicrobial	Intersept®
Soil/Stain Protection	Protekt2®
Pile Thickness	0.182 in., 4.6 mm
Pile Density	6,132
Total Recycled Content	66%
Indoor Air Quality	CRI Green Label Plus #GLP0820





Design Ideas Below are floor layouts showing how to create the design ideas shared in several of the images featured in this brochure.



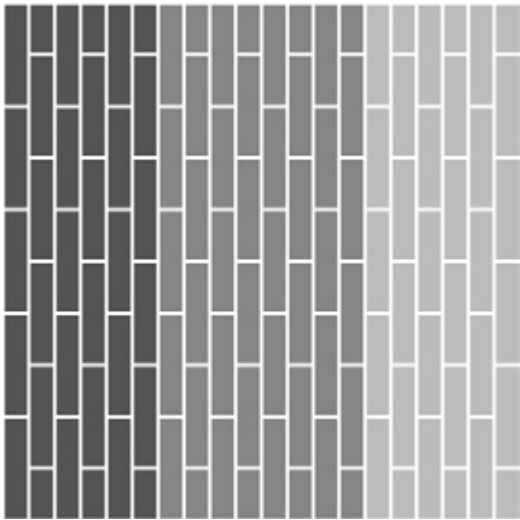
PRODUCT CE172 COLOR 104956 ORIGAMI INSTALLED HERRINGBONE



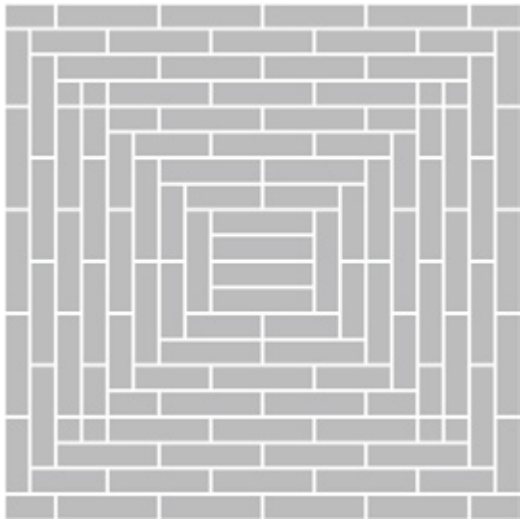
PRODUCT CE173 COLOR 104966 SAMURAI INSTALLED PATTERN BY TILE



PRODUCT CE173 COLOR 104966 SAMURAI  
PRODUCT CE172 COLOR 104958 SAMURAI  
PRODUCT CE171 COLOR 104950 SAMURAI INSTALLED ASHLAR



PRODUCT CE172 COLOR 104960 KABUKI INSTALLED PATTERN BY TILE





Why Our Modular Carpet?



Modular Carpet Tile

*Performance and Flexibility.* Interface's standard backing systems set the industry standard for modular performance. Tiles stay on the floor with no upcurl, no tapping and no rippling effect, yet are easy to selectively replace. Our modular carpet is also easier to handle, install and maintain than bulky roll carpet. And, it installs with less waste so you save time and money — 3-4% for typical modular carpet compared to an average waste factor of 14% for traditional roll carpet.



Cool Carpet™

*The Low Carbon Option*  
Help stop climate change. ALL Interface modular carpet sold in North America is third party verified climate neutral Cool Carpet. We start by using low-carbon materials and manufacturing processes, then Cool Carpet zeros out all remaining greenhouse gas (GHG) emissions associated with the entire lifecycle of your carpet, from raw material extraction through use and recycling. And climate neutral Cool Carpet may be eligible for a USGBC or CaGBC LEED Innovation Credit.



TacTiles®

*No Glue Installation.* Our revolutionary TacTiles installation system eliminates the need for glue, adhering tiles securely together to form a floor that “floats” for greater flexibility, easier replacement and long-term performance. The result? Less mess, less waste and virtually no VOCs, not to mention an environmental footprint that is over 90% lower than that of traditional glue adhesives.



Intersept®

*Mold Protection.* Our proprietary preservative, Intersept, protects our modular carpet against mold growth and odor-causing bacteria — guaranteed. Intersept treated carpet, with proper maintenance, shows no mold or bacterial growth when tested per the ASTM E2471 Standard Test Method. Intersept is EPA approved for safe use in carpet, water insoluble and contains no halogens, heavy metals, phenols or formaldehyde.



ReEntry®

*Recyclable is Now a Reality.* Through our ReEntry program and partnerships with our fiber suppliers and recycling centers throughout North America, separated Type 6 and 6,6 nylon are recycled into new 6 and 6,6 nylon, while separated GlasBac® and similar competitor backings are recycled into GlasBac®RE non-virgin PVC backing using our Cool Blue™ technology. The result? Products with up to 81% total recycled content, including as much as 35% post-consumer content.



Sustainable Choice

*Environmental Responsibility.* Interface was the industry's first to publish an EPD (Environmental Product Declaration), which evaluates consistent factors based on full lifecycle assessment (LCA). We now have published EPDs for more than 99% of our products gobally.

In addition, all Interface products with GlasBacRE backing meet the Platinum level of the NSF/ ANSI 140 Sustainable Assessment for Carpet. GlasBac or NexStep® backed products meet the Gold level. All may contribute toward a USGBC or CaGBC LEED Innovation Credit.

Samples

Order samples at [www.interface.com](http://www.interface.com). You'll receive email order confirmations, 24/7 access to order status and more. Not near a computer? You can also request samples by calling one of the numbers below.

United States 1.877.605.1500	Canada 1.866.398.3192
Brazil + 55 11 2196 0900	Latin America + 52 55 6395 5100

[www.interface.com](http://www.interface.com)

- Register at [www.interface.com](http://www.interface.com) to:
- Browse products and order samples
  - View carpet in a variety of room scenes
  - Use the Floors design tool to create floor layouts you can save or share.
  - Use our LEED Calculator
  - Check order status and inventory availability
  - Sign up to get the latest information on Interface products and news

InterCircle™ Sample Return

Help us close the loop on the carpet sampling process. Through our InterCircle Sample Return program, sample materials stay out of the landfill and are re-used as samples until it is time to recycle them into new carpet. By reducing sample production material and diverting old materials from the landfill, we can reduce our overall environmental footprint.

Call 1.877.605.1500 (U.S.) or 1.866.398.3192 (Canada) to order a sample return bag with a prepaid return label.

Third Party Certification



**Cool Carpet** – Our third party verified carbon offset program zeroes out all greenhouse gas (GHG) emissions associated with the entire lifecycle of your carpet.



**Environmental Product Declaration (EPD)** – A statement of product ingredients and environmental impacts over the entire life cycle of a product. A comprehensive life cycle assessment (LCA) is performed to ISO standards to develop an EPD, after which both the EPD and LCA must be third party verified.



**Sustainable Assessment for Carpet** – The only carpet sustainability standard in North America that evaluates the environmental impact of carpet for its entire lifecycle.



**CRI Green Label Plus** – An independent testing program that identifies carpet and adhesives with very low emissions of VOCs to help improve indoor air quality.

All product specifications reflect averages derived from product sample testing, are subject to normal manufacturing and testing tolerances and inherent pattern variances, and may be changed without notice. For more information about these and other important attributes of the product(s) described herein, including recycled content and product warranty information, please see [www.interface.com/disclaimer](http://www.interface.com/disclaimer).



**RECYCLED**  
Paper made from recycled material  
**FSC® C009723**



Printed on 50% post consumer waste (PCW) fiber manufactured using wind power.

We have tried our very best to accurately represent product colors. However, due to the nature of printed materials, color of actual products may vary slightly. Please request a sample to see actual product color.