

A modern interior space featuring a staircase with a white railing and dark steps. The floor is covered in a dark carpet with light-colored geometric patterns. A large abstract painting is mounted on the wall, and a decorative screen is visible in the background.

Brushed Lines and Drawn Lines | **LVT**

Interface®

Earth is the ultimate influencer. Organic lines. Dusty colors. Nature's favorite pattern-making method, fractals. These traces of the natural world ground us, connect us to the here and now.

Brushed Lines couples a diffused linear texture with a light-capturing quality that sparkles on the floor. Its subtle design complements both its warm and cool neutrals and its pops of earthy, mineral tones. Modern refinement from raw and natural inspirations.

Drawn Lines layers filament-fine marks in varying weights and rhythms. This fine linear matrix softly pools into areas of light and dark with a thread of metallic adding shimmer and depth. Prismatic geometry that captures interest again and again.

And at Interface, we're 'all in' on becoming a restorative business, driving toward positive impacts. As part of our commitment, Brushed Lines and Drawn Lines contain 39% recycled content and are recyclable in the 4.5 mm format through our ReEntry™ program.







Specifications

Product Number	A016
4.5 mm	C007
3.0 mm	
Product Construction	High Performance Luxury Vinyl Tile
Class/ASTM F1700	Class III Printed Vinyl Tile
Wear Layer Thickness	22 mil
Total Thickness	4.5 mm and 3.0 mm options available
Backing Class	Commercial Grade
Finish	Ceramor™ Coating
Nominal Dimensions	25 cm x 1 m (9.845 in x 39.38 in)
Total Recycled Content	39%
(Pre Consumer)	
Indoor Air Quality	GREENGUARD Gold
	FloorScore® Certified
	CDPH 01350 Compliant
Environmental Certifications	NSF/ANSI 332 Silver
LEED v4	Contributes to multiple IEQ and MR credits

View the full product specification on interface.com

Installation Methods



ASHLAR



HERRINGBONE

Ready for More?

Find the latest color options, formats and full specifications on Interface.com. Create an account or login to take the next step for your project.

4.5 mm LVT



CHECK AVAILABILITY
ORDER SAMPLES

3.0 mm LVT



CHECK AVAILABILITY
ORDER SAMPLES

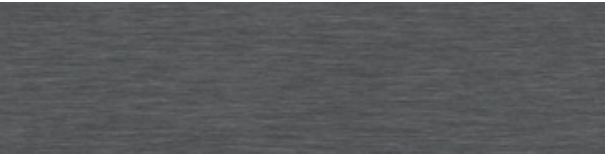
Brushed Lines™ Color Range



4.5 mm A01602 ALABASTER



4.5 mm A01604 GALENA
3.0 mm C00701 GALENA



4.5 mm A01605 GRAPHITE
3.0 mm C00702 GRAPHITE



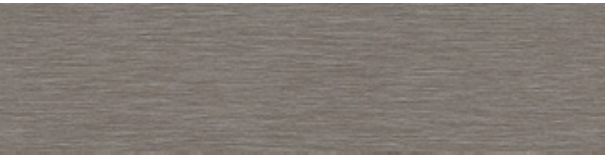
4.5 mm A01606 KOHL



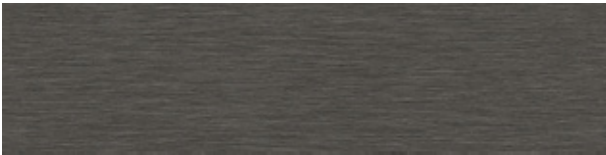
4.5 mm A01608 SANDALWOOD
3.0 mm C00705 SANDALWOOD



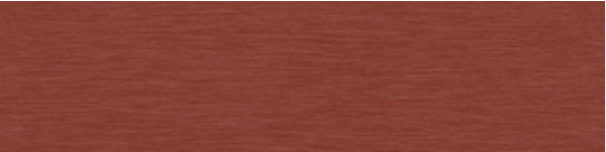
4.5 mm A01609 PARAFFIN
3.0 mm C00704 PARAFFIN



4.5 mm A01611 MOUSSE
3.0 mm C00703 MOUSSE



4.5 mm A01612 SOFT SHADOW



4.5 mm A01616 ROUGE



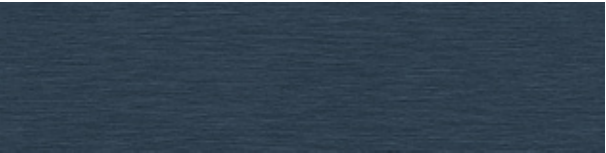
4.5 mm A01618 CELADON
3.0 mm C00706 CELADON



4.5 mm A01619 EUCALYPTUS



4.5 mm A01620 TEAL OXIDE
3.0 mm C00708 TEAL OXIDE



4.5 mm A01622 DEEP COBALT
3.0 mm C00707 DEEP COBALT



Drawn Lines™ Color Range



4.5 mm A00906 AQUAMARINE



4.5 mm A00907 ONYX



4.5 mm A00908 SILVER

Specifications

Product Number	A009
4.5 mm	
Product Construction	High Performance Luxury Vinyl Tile
Class/ASTM F1700	Class III Printed Vinyl Tile
Wear Layer Thickness	22 mil
Total Thickness	4.5 mm
Backing Class	Commercial Grade
Finish	Ceramor™ Coating
Nominal Dimensions	25 cm x 1 m (9.845 in x 39.38 in)
Total Recycled Content (Pre Consumer)	39%
Indoor Air Quality	GREENGUARD Gold FloorScore® Certified CDPH 01350 Compliant
Environmental Certifications	NSF/ANSI 332 Silver
LEED v4	Contributes to multiple IEQ and MR credits

View the full product specification on [interface.com](#)

Installation Methods



ASHLAR



HERRINGBONE

Ready for More?

Find the latest color options, formats and full specifications on [Interface.com](#). Create an account or login to take the next step for your project.

4.5 mm LVT



CHECK AVAILABILITY
ORDER SAMPLES

Why Our Modular Resilient LVT?



Integrated System

Save time and look good doing it. Our LVT integrates with our full product portfolio, allowing you to streamline specification and installation. Add our modular carpet for an inset rug or nora® in an adjacent field.

For a no transition strip solution, opt for our:

- 4.5 mm LVT to any carpet tile
- 3.0 mm LVT to most 17 oz or less carpet tile on GlasBac™ or CQuest™GB backing
- 3.0 mm LVT to our nora rubber flooring



Easy Maintenance

Create a unique look that lasts. Interface LVT extends the life of your floor. From simple damp mopping to selectively replacing 4.5 mm Sound Choice LVT tiles, your flooring investment will stand the test of time - beautifully and effortlessly.



ReEntry™

Keep flooring out of the landfill. All of our LVT is produced with a controlled material stream, and 4.5 mm Sound Choice LVT can be reclaimed and recycled along with Interface carpet tile through our ReEntry program. ReEntry is the only third party certified recycling system among North American flooring manufacturers.



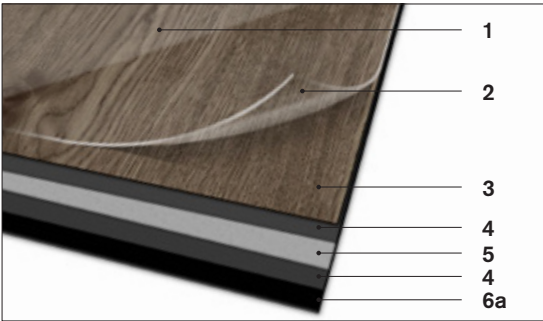
Noise Reduction

Silence distractions. 4.5 mm Sound Choice is a specially formulated backing for superior noise reduction, offering you best-in-class impact sound reduction and floor to floor sound transmission.

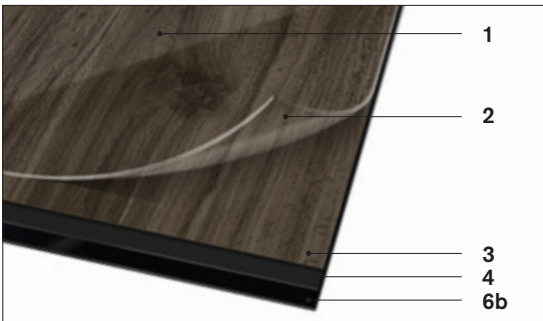


High Performance from Top to Bottom

4.5 mm Sound Choice™ LVT



3.0 mm LVT



- 1. Ceramor™ Coating.** Scratch and scuff resistant, UV stabilized ceramic bead coating.
- 2. Wear Layer.** High quality, 22 mil layer enabling 15 years of resilience and performance.
- 3. Print Film.** High definition wood looks, stone looks and innovative Interface designs.
- 4. Core Sheet.** Provides stabilization and reduces telegraphing from beneath.
- 5. Fiberglass.** Adds dimensional stability and controlled flexibility.
- 6a. Sound Choice Backing.** Provides added comfort and superior acoustic performance.
- b. Backing.** Provides greater resistance to residual indentation.



Environmental Product Declaration (EPD)

A third party verified statement of product ingredients and environmental impacts over the entire life cycle of a product.



GREENGUARD Gold & FloorScore®

Meeting the highest standards for indoor air quality and assuring very low emissions of VOCs, Interface LVT is GREENGUARD Gold and FloorScore® Certified and CDPH 01350 compliant.



Health Product Declaration (HPD)

A transparency tool for evaluating if a product includes materials of concern and whether it supports Green Chemistry.



NSF/ANSI 332 Silver

This standard evaluates the environmental impact of resilient floor covering for its entire life cycle.

🖱️ Samples

Register and order samples at [interface.com](https://www.interface.com). Not near a computer? You can also request samples by calling one of the numbers below.

United States
1.877.605.1500

Canada
1.866.398.3192

interface.com

Do more on [interface.com](https://www.interface.com)

- Browse products and order samples
- Save and share favorites
- See images of products in a variety of room scenes
- Browse floor designs, change colors, upload your own image, download and share
- Get full specifications, sustainability certifications and more
- Check order status and inventory availability
- Sign up to get the latest information on Interface products and news

We have tried our very best to accurately represent product colors. However, due to the nature of printed materials, color of actual products may vary slightly. Please request a sample to see actual product color.

All product specifications reflect averages derived from product sample testing, are subject to normal manufacturing and testing tolerances and inherent pattern variances, and may be changed without notice. For more information about these and other important attributes of the product(s) described herein, including recycled content and product warranty information, please see [interface.com/disclaimer](https://www.interface.com/disclaimer).



Printed on 50% post consumer waste (PCW)
fiber manufactured using wind power.

interface.com

United States Headquarters

1280 West Peachtree Street NW
Atlanta, GA 30309
1.800.634.6032

Canadian Headquarters

233 Lahr Drive
Belleville, ON K8N 5S2
1.800.267.2149 ext. 52128

CIM# IFS00946 03/2025