



Printed on 50% post consumer waste (PCW) fiber manufactured using wind power.

We have tried our very best to accurately represent product colors. However, due to the nature of printed materials, color of actual products may vary slightly. Please request a sample to see actual product color.

[www.interface.com](http://www.interface.com)

**United States Headquarters**

1503 Orchard Hill Road  
LaGrange, GA 30240  
1.800.336.0225 ext.56511

**Canadian Headquarters**

233 Lahr Drive  
Belleville, ON K8N 5S2  
1.800.267.2149 ext.52128

**Brazilian Headquarters**

Rua Surubim, 577 - Conjuntos  
73/74 7º Andar  
04571-050 - São Paulo - SP  
+ 55 11 2196 0900

**Latin American Headquarters**

Montes Urales # 415 Piso 6  
Col. Lomas de Chapultepec  
México City, D.F. 11000  
Mexico  
+ 52 55 6395 5100

CIM # IFS00794 04/2018



Climate change is undeniable. And reversible. Our mission is to prove it. Join the #ClimateTakeBack and help create a climate fit for life.

# Boundary Metallics | LVT

Interface®



Boundary™ Metallics

Boundary Metallics, our exclusive luxury vinyl tile design, presents a new point of view for the floor, inspired by man-made, industrial materials with the patina of nature and time. Infused with warm and cool metallics, light dances across the floor, activating it's typically static surface. Through pigment, organic pattern and texture, these Skinny Planks™ prove a more forgiving finish to scuffs and marks.

Create an integrated floor of open and sheltered areas by installing Boundary Metallics and Interface carpet tiles side-by-side. Our system of hard and soft tiles in Skinny Planks and squares allow you to move from surface to surface without the need for transition strips.

And at the end of its useful life, Boundary Metallics can be recycled into new GlasBac®RE backing through our recycling program, ReEntry®.









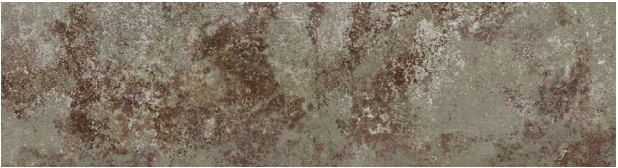


## Boundary Metallics Colorline & Specifications



A00601 DAYLIGHT

Product Number A006  
Product Construction High Performance Luxury Vinyl Tile  
Class / ASTM F1700 Class III Printed Vinyl Plank  
Wear Layer Thickness 22 mil  
Total Thickness 4.5 mm  
Backing Class Commercial Grade  
Finish Ceramor™ Coating  
Nominal Dimensions 25cm x 1m (9.845 in x 39.38 in)



A00605 FAWN

**Performance**  
IIC Sound Rating (ASTM E492-09) 57 IIC  
Slip Resistance (ASTM D2047) >0.55 wet/dry, ADA Compliant  
Static Load Limit (ASTM F970) 1500 psi  
Flexibility (ASTM F137) Passes  
Resistance to Heat (ASTM F1514) Passes  
Resistance to Light (ASTM F1515) Passes  
Radiant Flux (ASTM E648) Class I  
Smoke Density (ASTM E662) Passes, ≤450  
Size & Squareness (ASTM F2055) Passes, +/- 0.016 in. per linear foot  
Thickness (ASTM F386) Passes  
Dimensional Stability (ASTM F2199) Passes  
Residual Indentation (ASTM F1914) Passes  
Resistance to Chemicals (ASTM F925) Passes



A00606 ECLIPSE

**Environmental**  
Indoor Air Quality FloorScore®/CDPH 01350 Certified for Low-VOC Emissions  
Material Composition Free of Ortho Phthalates, Added Formaldehyde and Heavy Metal Stabilizers  
Ingredients & Life Cycle Impacts Environmental Product Declaration  
Carbon Footprint 3rd Party Verified Carbon Neutral  
Sustainability Assessment NSF/ANSI 332, Meets Certification Guidelines  
LEED v4 Contributes to IEQ: *Low Emitting Materials*; M&R: *EPD* and *EPR*  
End of Life Fully Recyclable LVT to Carpet Tile Backing



A00607 DESERT SHADOW

**Packaging**  
Square Feet per Carton 26.91 sq. ft. (2.5 m²)  
Pieces per Carton 10  
Weight per Carton 40 lbs (18 kg)  
Cartons per Pallet 40  
Pallets per Truckload 20



A00608 EVENING DUSK

**Technical Information**  
Installation See Interface LVT Installation Guidelines online  
Maintenance See Interface LVT Maintenance Guidelines online  
Reclamation Recyclable through ReEntry® - Call 1.888.733.6873 (U.S.) / 1.866.398.3191 (Canada)  
Warranty 15 Year Limited Commercial Warranty  
Installation Methods Ashlar, Herringbone



A00609 MORNING MIST



All product specifications reflect averages derived from product sample testing, are subject to normal manufacturing and testing tolerances and inherent pattern variances, and may be changed without notice. For more information about these and other important attributes of the product(s) described herein, including recycled content and product warranty information, please see our full LVT product disclaimer @ interface.com.





Interface Modular Resilient LVT and Modular Carpet allow you to seamlessly move from hard to soft surfaces. No transition strip needed.

CARPET PRODUCT GLOBAL CHANGE | PROGRESSION™ II COLOR 105505 DESERT SHADOW  
LVT PRODUCT BOUNDARY METALLICS COLOR A00607 DESERT SHADOW

## Why Our Modular Resilient LVT?

### Integrated System.

*Say goodbye to transition strips and doubling up.* Our modular resilient floorings are made to work as a system with our modular carpet. The compatible size and height of our products allows you to integrate modular carpet for an inset rug or an adjacent field – no transition strip required. You'll avoid doubling up on materials and save money.

### Real Flexibility.

*Create a unique look that lasts.* Interface modular resilient LVT makes it easy to extend the life of your floor. From simple maintenance like damp mopping to selectively replacing damaged tiles, your flooring investment will stand the test of time - beautifully and effortlessly.

### Circular System.

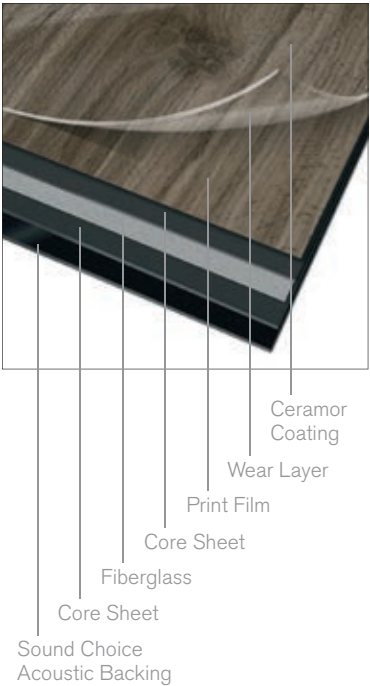
*Keep flooring out of the landfill.* Our modular resilient LVT is produced with a controlled material stream so it can be reclaimed and recycled into our GlasBac®RE recycled content backing through our ReEntry program.

### Noise Reduction.

*Silence distractions.* Interface is helping create +Positive spaces™ with our LVT with Sound Choice backing. Sound Choice is a specially formulated backing developed for superior noise reduction, offering you best-in-class performance for reduced impact sound and floor to floor sound transmission.



Why Our Modular Resilient LVT? (continued)



High Performance from Top to Bottom.

From our Ceramor™ coating to our Sound Choice backing, we've designed our modular resilient LVT to provide peak performance in even the most challenging work environment while also providing superior noise reduction.

*Abrasion Resistance.* Our Ceramor ceramic bead coating provides a durable finish that resists scratching and scuffing so your floors look better longer. Embossing adds texture to further enhance durability.

*A Strong Core.* Incorporating a fiberglass layer between two core sheets provides optimal dimensional stability and flexibility, allowing for a fully modular installation and the ability to move and update with ease.

Third Party Certification.

*Low Carbon Option.* ALL Interface LVT sold in North America is third party verified carbon neutral under our long-standing Cool Floor™ program. Cool Floor offsets all greenhouse gas (GHG) emissions associated with the entire lifecycle of the product.

*Environmental Product Declaration (EPD).* Interface LVT products are covered by an EPD. An EPD provides a comprehensive statement of product ingredients and environmental impacts based upon life cycle assessment performed to ISO standards.

*Sustainable Assessment.* Interface LVT meets the Silver level of the NSF/ANSI 332 Sustainability Assessment for Resilient Floor Coverings. This standard evaluates the environmental impact of resilient floorcovering for its entire lifecycle.

*Indoor Air Quality.* All Interface modular flooring products meet the highest standards for indoor air quality. Interface LVT is FloorScore® Certified, assuring very low emissions of VOCs.

cool floor™

