

Biodiversity Collection

www.interface.com

United States Headquarters
1280 West Peachtree Street NW
Atlanta, GA 30309
1.800.634.6032

Canadian Headquarters
233 Lahr Drive
Belleville, ON K8N 5S2
1.800.267.2149 ext.52128

Brazilian Headquarters
Rua Surubim, 577 - Conjuntos
73/74 7º Andar
04571-050 - São Paulo - SP
+ 55 11 2196 0900

Latin American Headquarters
Montes Urales # 415 Piso 6
Col. Lomas de Chapultepec
México City, D.F. 11000
Mexico
+ 52 55 6395 5100

05/2020



Climate change is undeniable. And reversible. Our mission is to prove it. Join the #ClimateTakeBack and help create a climate fit for life.

Interface

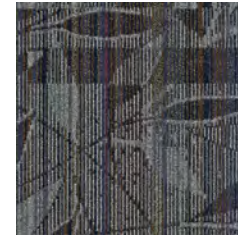
Biodiversity™ Collection

Inspired by the abundance of unique species across multiple ecosystems, Biodiversity's three patterns focus on indigenous flora. Farmland™ features a small, regimented texture similar to a plowed pasture, while the flowing pattern in Prairie Grass™ resembles windswept sheathing leaves. Broadleaf™'s more definitive foliage pattern rounds out the botanical collection. All three patterns are available in saturated, nature-inspired hues.

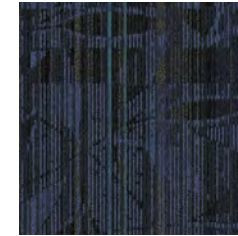




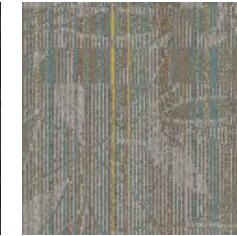
Broadleaf™ Colorline



9271 DELTA



9272 MOORLAND



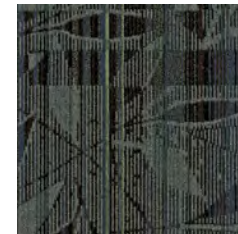
9273 PLATEAU



9276 PRAIRIE



9277 SAVANNA



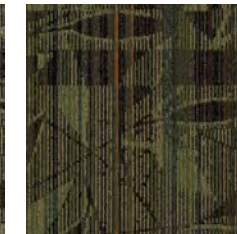
9278 PAMPAS



9279 FRONTIER



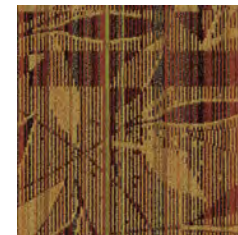
9280 MEADOW



9281 PASTURE



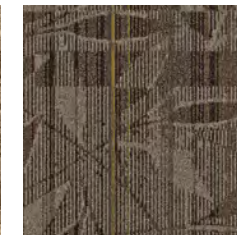
9282 PLAINS



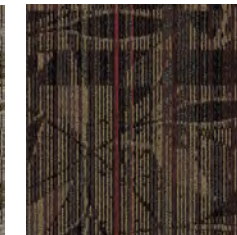
9283 WILDERNESS



9285 TERRACE



9286 STEPPE



9287 SERENGETI

Specifications

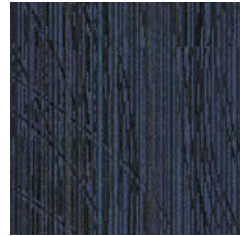
Modular 50cm x 50cm	1234702500
Backing System	GlasBac® Tile
Yarn Manufacturer	Universal
Yarn System	Post-Consumer Content Nylon
Color System	100% Solution Dyed
Construction	Tufted Cut & Loop
Preservative Protection	Intersept®
Soil/Stain Protection	Protekt ^{2B}
Pile Thickness	0.118 in., 3.0 mm
Pile Density	6,712
Total Recycled Content	68%
Indoor Air Quality	CRI Green Label Plus #GLP0820



Prairie Grass™ Colorline



9306 DELTA



9307 MOORLAND



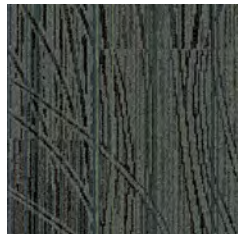
9308 PLATEAU



9311 PRAIRIE



9312 SAVANNA



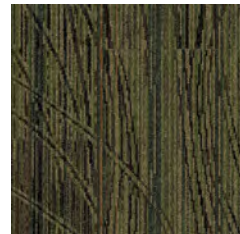
9313 PAMPAS



9314 FRONTIER



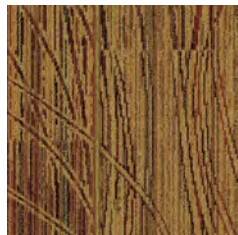
9315 MEADOW



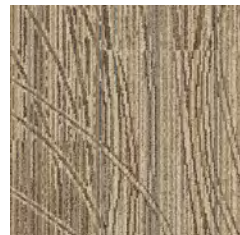
9316 PASTURE



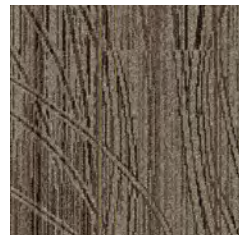
9317 PLAINS



9318 WILDERNESS



9320 TERRACE



9321 STEPPE



9322 SERENGETI

Specifications

Modular	50cm x 50cm	1234902500
Backing System	GlasBac® Tile	
Yarn Manufacturer	Universal	
Yarn System	Post-Consumer Content Nylon	
Color System	100% Solution Dyed	
Construction	Tufted Cut & Loop	
Preservative Protection	Intersept®	
Soil/Stain Protection	Protekt2®	
Pile Thickness	0.142 in., 3.6 mm	
Pile Density	5,831	
Total Recycled Content	69%	
Indoor Air Quality	CRI Green Label Plus #GLP0820	



ASHLAR QUARTER-TURN



Farmland™ Colorline



9289 DELTA

9290 MOORLAND

9291 PLATEAU

9294 PRAIRIE

9295 SAVANNA



9296 PAMPAS

9297 FRONTIER

9298 MEADOW

9299 PASTURE

9300 PLAINS



9301 WILDERNESS

9303 TERRACE

9304 STEPPE

9305 SERENGETI

Specifications

Modular 50cm x 50cm	1234802500
Backing System	GlasBac® Tile
Yarn Manufacturer	Universal
Yarn System	Post-Consumer Content Nylon
Color System	100% Solution Dyed
Construction	Tufted Cut & Loop
Preservative Protection	Intersept®
Soil/Stain Protection	Protekt2®
Pile Thickness	0.12 in., 3 mm
Pile Density	6,000
Total Recycled Content	68%
Indoor Air Quality	CRI Green Label Plus #GLP0820



ASHLAR QUARTER-TURN



Biodiversity Pattern Library

Pattern Options require a minimum order of 100 square yards. Samples are available as printed simulations. Visit www.interface.com for Biodiversity Loop Pattern Library and additional pattern options. Photos are featured in colorway Prairie installed brick.



PATTERN M0354
SIZE 1M X 1M



PATTERN M0355
SIZE 50CM X 50CM



PATTERN M0356
SIZE 1M X 1M



PATTERN M0361
SIZE 50CM X 50CM



PATTERN M0366
SIZE 1M X 1M



PATTERN M0367
SIZE 50CM X 50CM



PATTERN M0357
SIZE 50CM X 50CM



PATTERN M0358
SIZE 1M X 1M



PATTERN M0359
SIZE 50CM X 50CM



PATTERN M0368
SIZE 1M X 1M



PATTERN M0369
SIZE 50CM X 50CM



PATTERN M0370
SIZE 1M X 1M

Biodiversity Pattern Library

Pattern Options require a minimum order of 100 square yards. Samples are available as printed simulations. Visit www.interface.com for Biodiversity Loop Pattern Library and additional pattern options. Photos are featured in colorway Prairie installed brick.



PATTERN M0371
SIZE 50CM X 50CM



PATTERN M0372
SIZE 1M X 1M



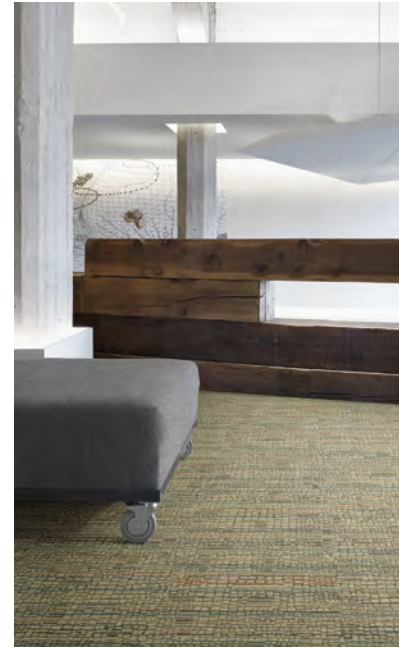
PATTERN M0373
SIZE 50CM X 50CM



PATTERN M0377
SIZE 50CM X 50CM



PATTERN M0378
SIZE 1M X 1M



PATTERN M0383
SIZE 50CM X 50CM



PATTERN M0374
SIZE 1M X 1M



PATTERN M0375
SIZE 50CM X 50CM



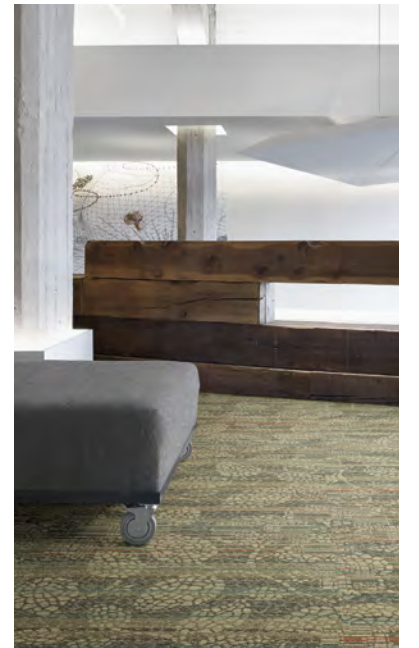
PATTERN M0376
SIZE 1M X 1M



PATTERN M0384
SIZE 1M X 1M



PATTERN M0385
SIZE 50CM X 50CM



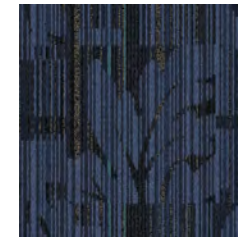
PATTERN M0386
SIZE 1M X 1M



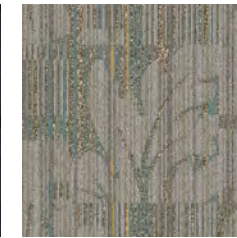
Biodiversity Pattern Library Colorline



100001 DELTA



100002 MOORLAND



100003 PLATEAU



100006 PRAIRIE



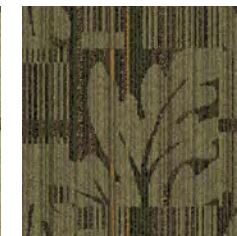
100007 SAVANNA



100008 PAMPAS



100009 FRONTIER



100010 MEADOW



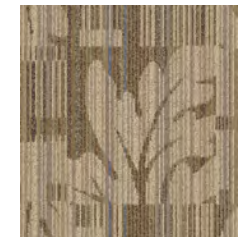
100011 PASTURE



100012 PLAINS



100013 WILDERNESS



100015 TERRACE



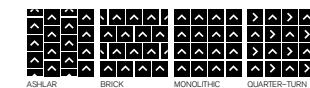
100016 STEPPE



100017 SERENGETI

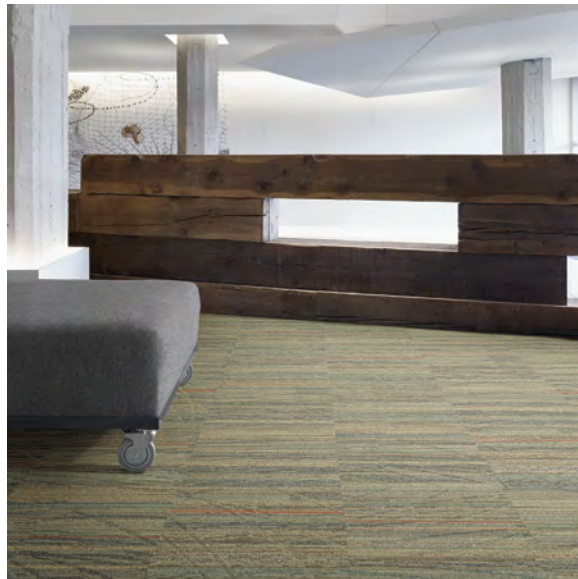
Specifications

Modular 50cm x 50cm	1235502500
Modular 1m x 1m	1235502000
Backing System	GlasBac® Tile
Yarn Manufacturer	Universal
Yarn System	Post-Consumer Content Nylon
Color System	100% Solution Dyed
Construction	Tufted Cut & Loop
Preservative Protection	Intersept®
Soil/Stain Protection	Protekt ² ®
Pile Thickness	0.161 in., 4.1 mm
Pile Density	4,919
Total Recycled Content	69%
Indoor Air Quality	CRI Green Label Plus #GLP0820

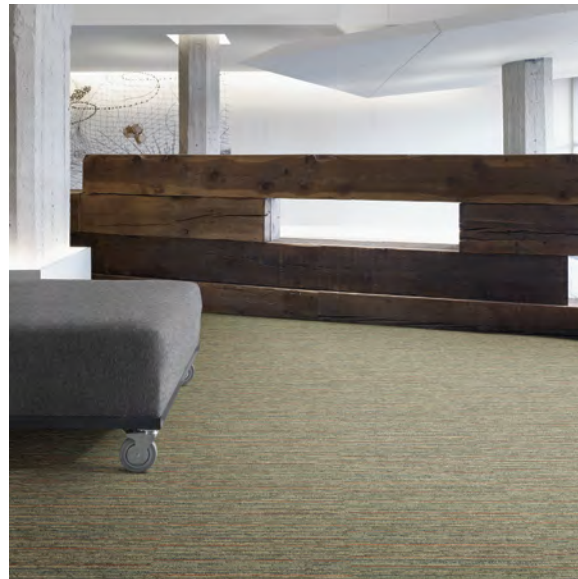


PRODUCT BIODIVERSITY PATTERN LIBRARY PATTERN M0377
 COLOR 100006 PRAIRIE INSTALLED ASHLAR

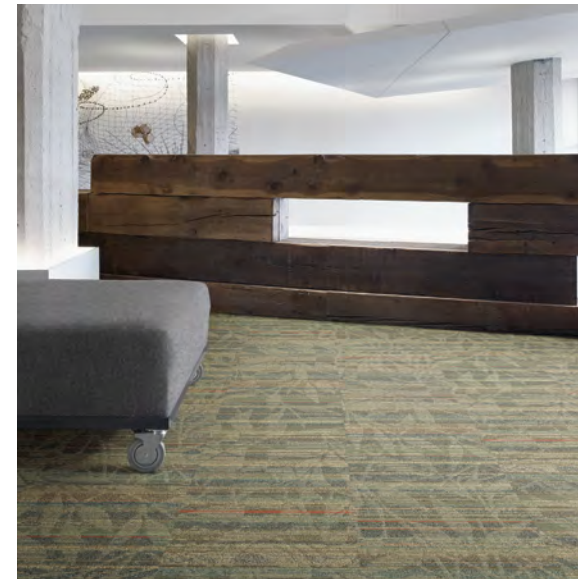
Prairie Grass Loop



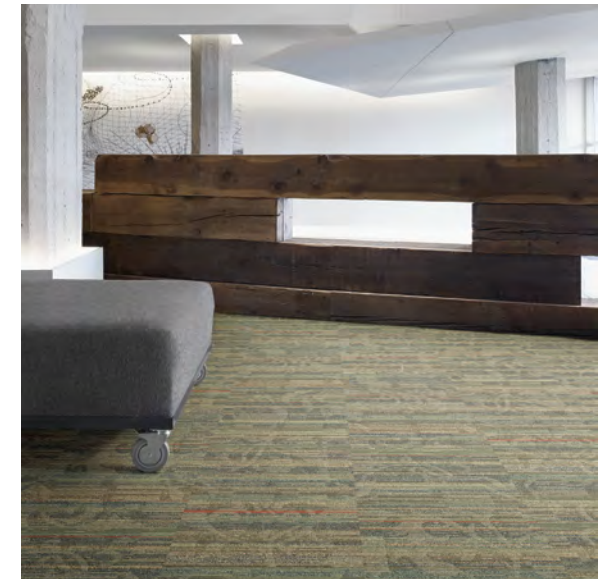
Farmland Loop



Broadleaf Loop



Biodiversity Loop Pattern Library



- 102008 Delta
- 102009 Moorland
- 102010 Plateau
- 102013 Prairie
- 102014 Savanna
- 102015 Pampas
- 102016 Frontier
- 102017 Meadow
- 102018 Pasture
- 102019 Plains
- 102020 Wilderness
- 102022 Terrace
- 102023 Steppe
- 102024 Serengeti

- 101900 Delta
- 101901 Moorland
- 101902 Plateau
- 101905 Prairie
- 101906 Savanna
- 101907 Pampas
- 101908 Frontier
- 101909 Meadow
- 101910 Pasture
- 101911 Plains
- 101912 Wilderness
- 101914 Terrace
- 101915 Steppe
- 101916 Serengeti

- 101990 Delta
- 101991 Moorland
- 101992 Plateau
- 101995 Prairie
- 101996 Savanna
- 101997 Pampas
- 101998 Frontier
- 101999 Meadow
- 102000 Pasture
- 102001 Plains
- 102002 Wilderness
- 102004 Terrace
- 102005 Steppe
- 102006 Serengeti

- 101972 Delta
- 101973 Moorland
- 101974 Plateau
- 101977 Prairie
- 101978 Savanna
- 101979 Pampas
- 101980 Frontier
- 101981 Meadow
- 101982 Pasture
- 101983 Plains
- 101984 Wilderness
- 101986 Terrace
- 101987 Steppe
- 101988 Serengeti

Why Our Modular Carpet?



Modular Flooring

Performance and flexibility. Interface's standard backing systems set the industry standard for modular performance. Tiles stay on the floor with no upcurl, no tapping and no rippling effect, yet are easy to selectively replace. Our modular carpet is easier to handle than bulky roll carpet and produces an average of just 3-4% waste compared to roll carpet's average of 14%. And it installs seamlessly with our LVT, no transition strips needed.



Carbon Neutral Floors™

Create a climate fit for life. All Interface flooring sold globally is third party verified carbon neutral. We've taken a holistic approach to achieve carbon neutrality, first through reducing the carbon footprint of our products and then using carbon offsets for the remainder, including the emissions from raw materials, our manufacturing processes and product use to end of life.



TacTiles™

No glue installation. Our revolutionary TacTiles installation system eliminates the need for glue, adhering tiles securely together to form a floor that "floats" for greater flexibility, easier replacement and long-term performance. The result? Less mess, less waste and virtually no VOCs, not to mention an environmental footprint that is over 90% lower than that of traditional glue adhesives.



Intersept®

Mold protection. Our proprietary preservative, Intersept, protects our modular carpet against mold growth and odor-causing bacteria—guaranteed. Intersept treated carpet, with proper maintenance, shows no mold or bacterial growth when tested per the ASTM E2471 Standard Test Method. Intersept is EPA approved for safe use in carpet, water insoluble and contains no halogens, heavy metals, phenols or formaldehyde.



ReEntry™

Recyclable is now a reality. Through our ReEntry program and partnerships with our fiber suppliers and recycling centers throughout North America, separated Type 6 and 6,6 nylon are recycled into new 6 and 6,6 nylon while separated GlasBac™, GlasBacRE, similar competitive backings and our own LVT are recycled into new GlasBacRE non-virgin PVC backing using our Cool Blue™ technology. The result? Products with up to 89% total recycled content, including as much as 27% post-consumer content.



Sustainable Choice

Environmental responsibility. More than 95% of Interface products manufactured in the Americas carry the GreenCircle Certified Environmental Facts label, which has verified that standard Interface products are manufactured using 99% renewable energy and offer a minimum of 66% and 80% total recycled content when backed with GlasBac and GlasBacRE backing respectively.

Transparency and certified sustainability leadership come standard on all Interface products, including published ingredients in HPDs (Health Product Declarations) or Declare Labels. In addition, more than 99% of our products globally have a published EPD (Environmental Product Declaration), which evaluates consistent factors based on full life cycle assessment (LCA). And, all Interface products with GlasBacRE backing are certified to the Platinum level of the NSF/ANSI 140 Sustainable Assessment for Carpet. GlasBac backed products meet the Gold level. NSF/ANSI 140 certified products contribute toward a USGBC or CaGBC LEED credit.

Samples

Order samples at www.interface.com. You'll receive email order confirmations, 24/7 access to order status and more. Not near a computer? You can also request samples by calling one of the numbers below.

United States 1.877.605.1500	Canada 1.866.398.3192
Brazil + 55 11 2196 0900	Latin America + 52 55 6395 5100

www.interface.com

Register at www.interface.com to:

- Browse products and order samples
- View carpet in a variety of room scenes
- Browse floor designs, change colors, view as a grid or in a room, download and share
- Use our LEED Calculator
- Check order status and inventory availability
- Sign up to get the latest information on Interface products and news

InterCircle™ Sample Return

Help us close the loop on the carpet sampling process. Through our InterCircle Sample Return program, sample materials stay out of the landfill and are re-used as samples until it is time to recycle them into new carpet. By reducing sample production material and diverting old materials from the landfill, we can reduce our overall environmental footprint.

Call 1.877.605.1500 (U.S.) or 1.866.398.3192 (Canada) to order a sample return bag with a prepaid return label.

Third Party Certification



Bureau Veritas – All Interface flooring sold globally is third party verified carbon neutral.



Environmental Product Declaration (EPD) – A statement of product ingredients and environmental impacts over the entire life cycle of a product. A comprehensive life cycle assessment (LCA) is performed to ISO standards to develop an EPD, after which both the EPD and LCA must be third party verified.



Sustainable Assessment for Carpet – The only carpet sustainability standard in North America that evaluates the environmental impact of carpet for its entire lifecycle.



CRI Green Label Plus – An independent testing program that identifies carpet and adhesives with very low emissions of VOCs to help improve indoor air quality.

All product specifications reflect averages derived from product sample testing, are subject to normal manufacturing and testing tolerances and inherent pattern variances, and may be changed without notice. For more information about these and other important attributes of the product(s) described herein, including recycled content and product warranty information, please see www.interface.com/disclaimer.



Printed on 50% post consumer waste (PCW) fiber manufactured using wind power.

We have tried our very best to accurately represent product colors. However, due to the nature of printed materials, color of actual products may vary slightly. Please request a sample to see actual product color.