

Beaumont Range Collection

Eben
Ferris
Mesa

FLOR[®]
Zera

Interface[®]

Beaumont Range™ Collection

For transformative stone, nature works.

Welcome to Beaumont Range, a carpet tile collection inspired by the ever-changing beauty of mountain trails.

Using innovative new design techniques, Beaumont Range products combine multiple patterns into one overall design that subtly evolves across large floorscapes. With i2®, no two installations look the same as each floor cleverly mimics the wonderful randomness of nature.

Choose from the granite seams of Mesa™, the dappled layers of Eben™ and the changing, organic forms of Ferris™. All available as plank tiles, with colors ranging from slate grays to rich forest greens. Beaumont Range also includes Zera™ – a square FLOR® tile that captures the infinite elegance of marbled stone.

As part of our Carbon Neutral Floors™ program, when you specify Interface flooring, you're on the path to a more sustainable space. You're choosing to reduce the carbon footprint of your space and help improve the health of the planet.



PRODUCT ZERA COLOR 107532 PEARL
PRODUCT MESA COLOR 107517 CEDAR INSTALLED ASHLAR





PRODUCT EBEN COLOR 107538 WALNUT INSTALLED PATTERN BY TILE

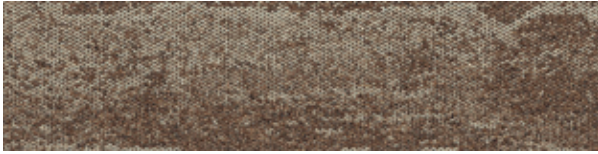
Mesa™ Colorline



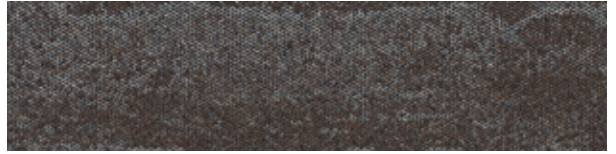
107515 FERN



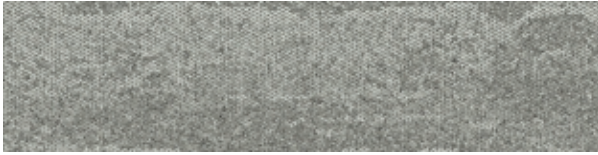
107516 EVERGREEN



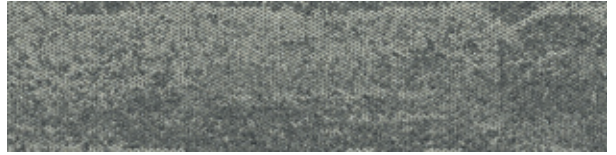
107517 CEDAR



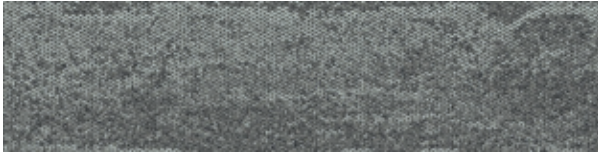
107518 UMBER



107519 CLAY



107520 FOG



107521 METAL



107522 SHADOW

Specifications

Modular, 25cm x 1m	13125
Yarn Manufacturer	Aquafil
Yarn System	100% Recycled Content Nylon
Color System	100% Solution Dyed
Construction	Tufted Textured Loop
Preservative Protection	Intersept®
Soil/Stain Protection	Protekt ² ®
Pile Thickness	0.08 in., 2 mm
Pile Density	8,550 oz/yd ³
Total Recycled Content	Up To 83%
Indoor Air Quality	CRI Green Label Plus #GLP0820

View the full product specification on interface.com

Installation Methods



ASHLAR



HERRINGBONE

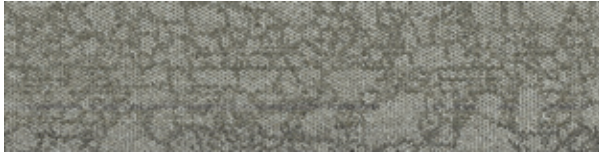


BROWSE IMAGES
ORDER SAMPLES

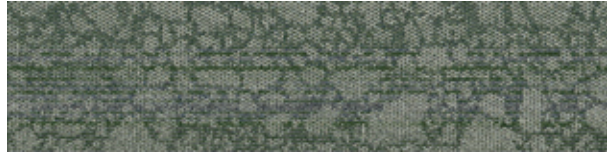




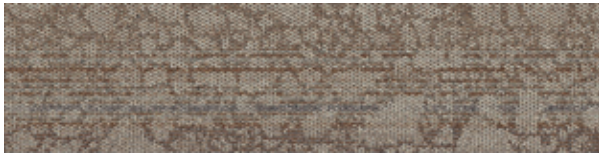
Eben™ Colorline



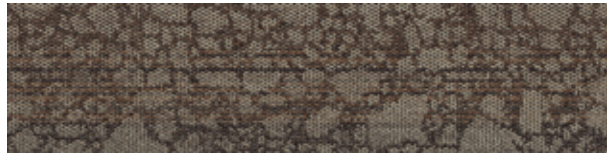
107535 LICHEN



107536 MOSS



107537 OAK



107538 WALNUT



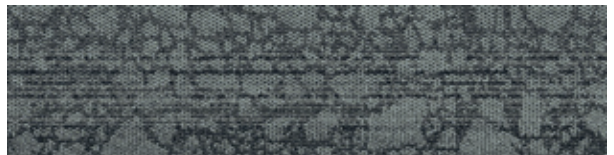
107539 GREIGE



107540 PEBBLE



107541 SMOKE



107542 LAVA

Specifications

Modular, 25cm x 1m	13126
Yarn Manufacturer	Aquafil
Yarn System	100% Recycled Content Nylon
Color System	100% Solution Dyed
Construction	Tufted Textured Loop
Preservative Protection	Intersept®
Soil/Stain Protection	Protek ² ®
Pile Thickness	0.099 in., 2.5 mm
Pile Density	7,273 oz/yd ³
Total Recycled Content	Up To 83%
Indoor Air Quality	CRI Green Label Plus #GLP0820

View the full product specification on [interface.com](https://www.interface.com)

Installation Methods



ASHLAR



HERRINGBONE

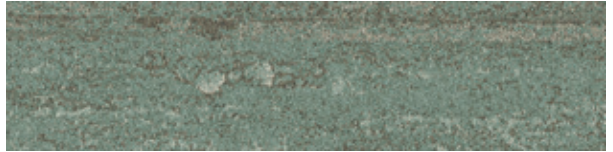


BROWSE IMAGES
ORDER SAMPLES

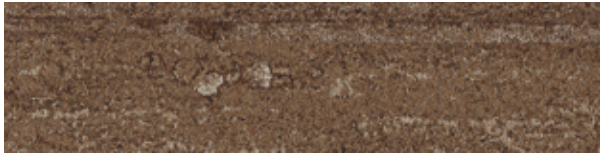
Ferris™ Colorline



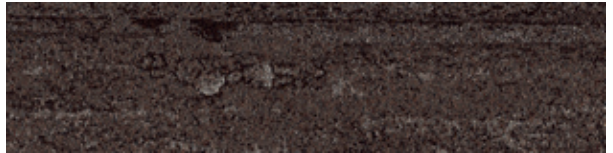
107523 FOREST



107524 SAGE



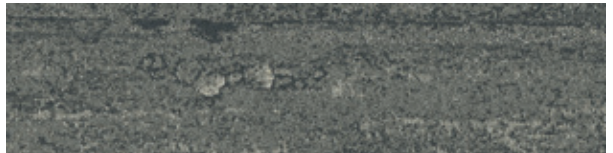
107525 SIENNA



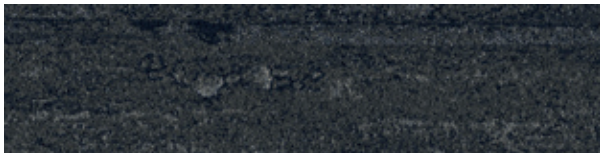
107526 TRUFFLE



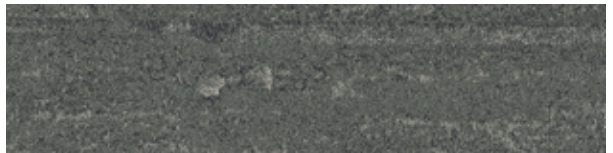
107527 GLACIER



107528 MUSHROOM



107529 VOLCANIC



107530 ASH

Specifications

Modular, 25cm x 1m	14829
Yarn Manufacturer	Aquafil
Yarn System	100% Recycled Content Nylon
Color System	100% Solution Dyed
Construction	Engaged Tufted Pattern Loop
Preservative Protection	Intersept®
Soil/Stain Protection	Protekt ² ®
Pile Thickness	0.123 in., 3.1 mm
Pile Density	8,195 oz/yd ³
Total Recycled Content	Up To 84%
Indoor Air Quality	CRI Green Label Plus #GLP0820

View the full product specification on [interface.com](https://www.interface.com)

Installation Methods



ASHLAR



HERRINGBONE



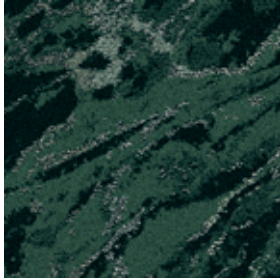
BROWSE IMAGES
ORDER SAMPLES



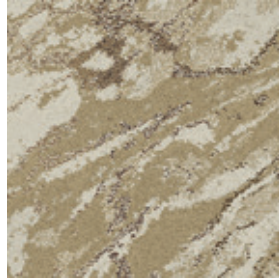
PRODUCT FERRIS COLOR 107527 GLACIER INSTALLED ASHLAR



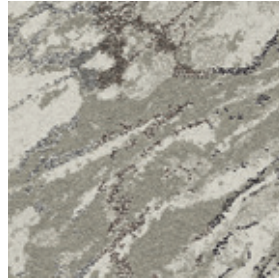
FLOR® Zera™ Colorline



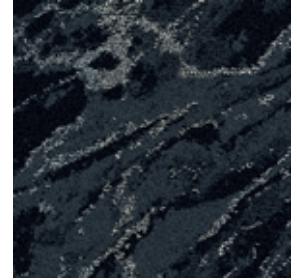
107531 PINE



107532 PEARL



107533 BONE



107534 BLACK

Specifications

Modular, 50cm x 50cm	14830
Yarn Manufacturer	Aquafil
Yarn System	100% Recycled Content Nylon
Color System	100% Solution Dyed
Construction	Engaged Tufted Sheared
Preservative Protection	Intersept®
Soil/Stain Protection	Protekt ² ®
Pile Thickness	0.236 in., 6 mm
Pile Density	4,729 oz/yd ³
Total Recycled Content	Up To 72%
Indoor Air Quality	CRI Green Label Plus #GLP0820

View the full product specification on [interface.com](https://www.interface.com)

Installation Methods



NON DIRECTIONAL



BROWSE IMAGES
ORDER SAMPLES

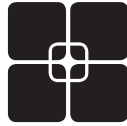
Why Our Modular Flooring?



i2® Modular Carpet

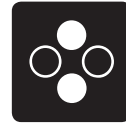
Minimize waste & save money.

Interface's i2® styles have mergeable dye lots. That means i2 tiles from different dye lots always blend with tiles of the same color, even when individual tiles are selectively replaced years later. This minimizes the need for attic stock and saves money. And i2 styles that install non directionally generate an average of only 1.5% installation waste as compared to 3-4% for typical modular carpet and an average of 14% for traditional roll carpet.



TacTiles™

No glue installation. Our revolutionary TacTiles installation system eliminates the need for glue, adhering tiles securely together to form a floor that "floats" for greater flexibility, easier replacement and long-term performance. The result? Less mess, less waste and virtually no VOCs, not to mention an environmental footprint that is over 90% lower than that of traditional glue adhesives. TacTiles are approved for use on GlasBac™, CQuest™GB.



Intersept®

Mold protection. Our proprietary preservative, Intersept, protects our modular carpet against mold growth and odor-causing bacteria—guaranteed. Intersept treated carpet, with proper maintenance, shows no mold or bacterial growth when tested per the ASTM E2471 Standard Test Method. Intersept is EPA approved for safe use in carpet, water insoluble and contains no halogens, heavy metals, phenols or formaldehyde. Intersept is standard in Interface carpet tile products backed with GlasBac, CQuestGB, ReadyBac™ and CushionBac Renew™.

FLOR

FLOR by Interface offers lush textures and bold patterns that are anything but business as usual. FLOR carpet tiles are the perfect design accent for offices, conference rooms and high-profile collaborative spaces – as area rugs or wall-to-wall installations. With all the performance benefits of Interface products, including the 15-year commercial warranty, they'll get the job done for years to come.

Samples

Order samples at interface.com. You'll receive email order confirmations, 24/7 access to order status and more. Not near a computer? You can also request samples by calling one of the numbers below.

United States
1.877.605.1500

Canada
1.866.398.3192

Brazil
+ 5511.2196.0900

Latin America
+ 52.55.2791.6812

interface.com

Register at interface.com to:

- Browse products and order samples
- View carpet in a variety of room scenes
- Browse floor designs, change colors, view as a grid or in a room, download and share
- Check order status and inventory availability
- Sign up to get the latest information on Interface products and news

InterCircle Sample Return

Help us close the loop on the carpet sampling process. Through our InterCircle Sample Return program, sample materials stay out of the landfill and are re-used as samples until it is time to recycle them into new carpet. By reducing sample production material and diverting old materials from the landfill, we can reduce our overall environmental footprint.

Call 1.877.605.1500 (U.S.) or 1.866.398.3192 (Canada) to order a sample return bag with a prepaid return label.



ReEntry™

Recyclable. Through our ReEntry program, we reclaim all Interface carpet tile. The result? Carpet tile products with up to 85% total recycled content, including as much as 25% post-consumer content.



Sustainability Transparency

Transparency and certified sustainability leadership come standard on Interface products. We enlist outside partners to help us evaluate the entire product lifecycle and reduce the environmental and human health impact of our flooring. And, carpet products made in our US facilities are made with 99% renewable energy.



Help Lower Your Carbon Footprint

Like all the flooring products we sell, Interface carpet tile is carbon neutral across its full product life cycle through our third party verified Carbon Neutral Floors™ program. To find out more, visit interface.com/carbonneutral



Environmental Product Declaration (EPD) –

A statement of product ingredients and environmental impacts over the entire life cycle of a product. A comprehensive life cycle assessment (LCA) is performed to ISO standards to develop an EPD, after which both the EPD and LCA must be third party verified.



NSF Certified
NSF/ANSI 101 + 100™
GREENGUARD

Sustainable Assessment for Carpet – The

only carpet sustainability standard in North America that evaluates the environmental impact of carpet for its entire lifecycle.



CRI Green Label Plus – An independent testing program that identifies carpet and adhesives with very low emissions of VOCs to help improve indoor air quality.

We have tried our very best to accurately represent product colors. However, due to the nature of printed materials, color of actual products may vary slightly. Please request a sample to see actual product color.

All product specifications reflect averages derived from product sample testing, are subject to normal manufacturing and testing tolerances and inherent pattern variances, and may be changed without notice. For more information about these and other important attributes of the product(s) described herein, including recycled content and product warranty information, please see interface.com/disclaimer.



RECYCLED
Paper made from
recycled material
FSC® C009723



PLEASE RECYCLE

Printed on 100% post consumer waste (PCW)
fiber manufactured using wind power.

interface.com

United States Headquarters

1280 West Peachtree Street NW
Atlanta, GA 30309
1.800.634.6032

Canadian Headquarters

233 Lahr Drive
Belleville, ON K8N 5S2
1.800.267.2149 ext.52128

Brazilian Headquarters

Av. Das Nações Unidas 14261
25 andar, sala 25 - 122, Brooklin Paulista
São Paulo 04578 - 000
Brasil
+ 5511.2196.0900

Latin American Headquarters

Montes Urales # 415 Piso 6
Lomas de Chapultepec
Miguel Hidalgo, CDMX
11000 Mexico
+ 52.55.2791.6812

CIM# IFS00914 06/2022



Climate change is undeniable. And
reversible. Our mission is to prove it.
**Join the #ClimateTakeBack and
help create a climate fit for life.**