

[www.interface.com](http://www.interface.com)

**United States Headquarters**

1503 Orchard Hill Road  
LaGrange, GA 30240  
1.800.336.0225 ext.56511

**Canadian Headquarters**

233 Lahr Drive  
Belleville, ON K8N 5S2  
1.800.267.2149 ext.52128

**Brazilian Headquarters**

Rua Surubim, 577 - Conjuntos  
73/74 7º Andar  
04571-050 - São Paulo - SP  
+ 55 11 2196 0900

**Latin American Headquarters**

Montes Urales # 415 Piso 6  
Col. Lomas de Chapultepec  
México City, D.F. 11000  
Mexico  
+ 52 55 6395 5100

08/2018



Climate change is undeniable. And reversible. Our mission is to prove it. Join the #ClimateTakeBack and help create a climate fit for life.



# Aerial Squares



Interface®



## Aerial™ Squares

---

A view from above gives us the unique opportunity to witness connectivity. The web of connections fascinates and assures us. In Aerial, a simple neutral palette travels new paths when several hues are tangled together for each colorway. The way the shades shift in seemingly endless movements from one tile to the next is provocative and stirs attention.

The construction of AE310 recalls the warp and weft of a hand-woven textile while AE312 adds strands of color to light up that texture. The Aerial squares fit together effortlessly with the rest of the collection, creating a network of design possibilities to trace and discover.





PRODUCT AE310 COLOR 104623 FOG INSTALLED NON-DIRECTIONAL





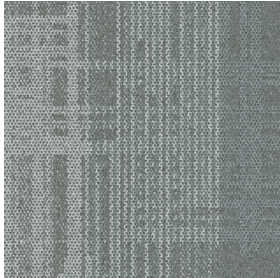




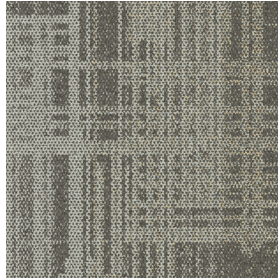
PRODUCT AE310 COLORS 104621 MIST, 104625 GREIGE,  
104628 INK INSTALLED PATTERN BY TILE



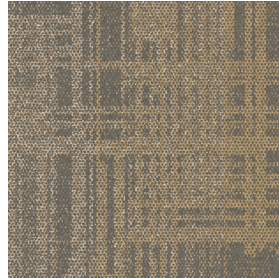
## AE310 Colorline



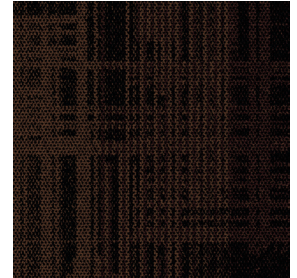
104621 MIST



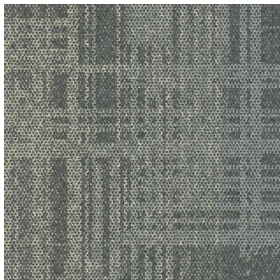
104622 FOG



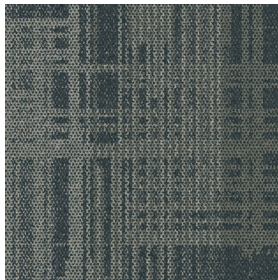
104623 TAUPE



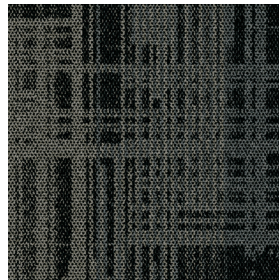
104624 CHESTNUT



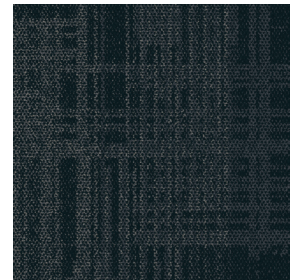
104625 GREIGE



104626 IRON



104627 SMOKE



104628 INK

## Specifications **i2**

Modular, 50 cm x 50 cm	1388202500
Backing System	GlasBac® Tile
Yarn Manufacturer	Aquafil
Yarn System	100% Recycled Content Type 6 Nylon
Color System	100% Solution Dyed
Construction	Tufted Textured Loop
Preservative Protection	Intersept®
Soil/Stain Protection	Protekt <sup>2</sup> ®
Pile Thickness	0.100 in., 2.5 mm
Pile Density	5,760
Total Recycled Content	71%
Indoor Air Quality	CRI Green Label Plus #GLP0820



NON DIRECTIONAL

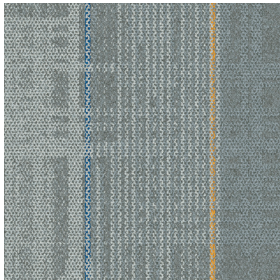




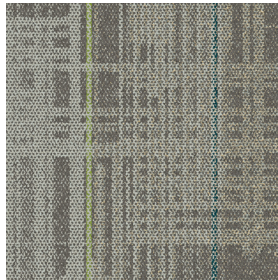
PRODUCT AE310 COLOR 104627 SMOKE INSTALLED NON DIRECTIONAL



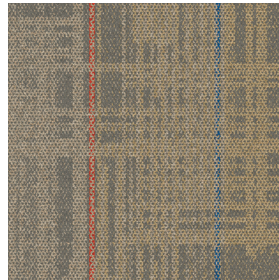
## AE312 Colorline



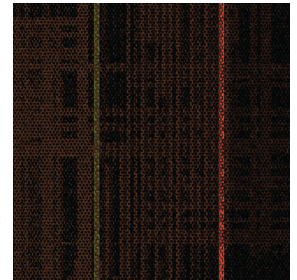
105405 MIST/ACCENT



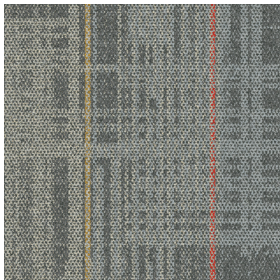
105406 FOG/ACCENT



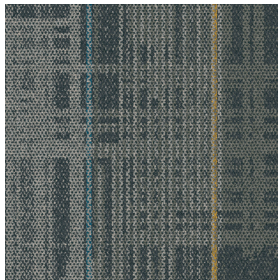
105407 TAUPE/ACCENT



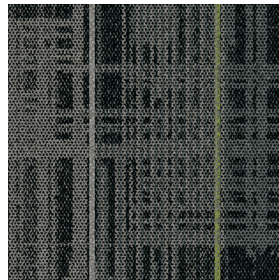
105408 CHESTNUT/ACCENT



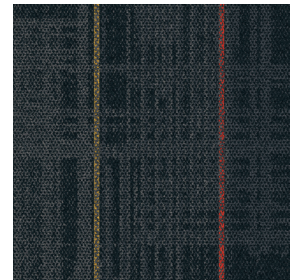
105409 GREIGE/ACCENT



105410 IRON/ACCENT



105411 SMOKE/ACCENT



105412 INK/ACCENT

## Specifications **i2**

Modular, 50 cm x 50 cm	1389102500
Backing System	GlasBac® Tile
Yarn Manufacturer	Aquafil
Yarn System	100% Recycled Content Type 6 Nylon
Color System	100% Solution Dyed
Construction	Tufted Textured Loop
Preservative Protection	Intersept®
Soil/Stain Protection	Protekt <sup>2</sup> ®
Pile Thickness	0.100 in., 2.5 mm
Pile Density	5,760
Total Recycled Content	71%
Indoor Air Quality	CRI Green Label Plus #GLP0820





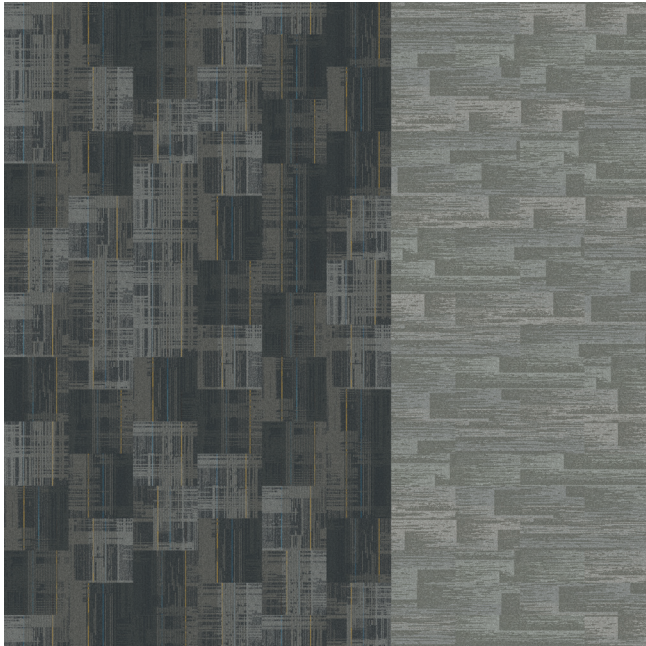


PRODUCT AE312 COLOR 106411 SMOKE/ACCENT INSTALLED BRICK

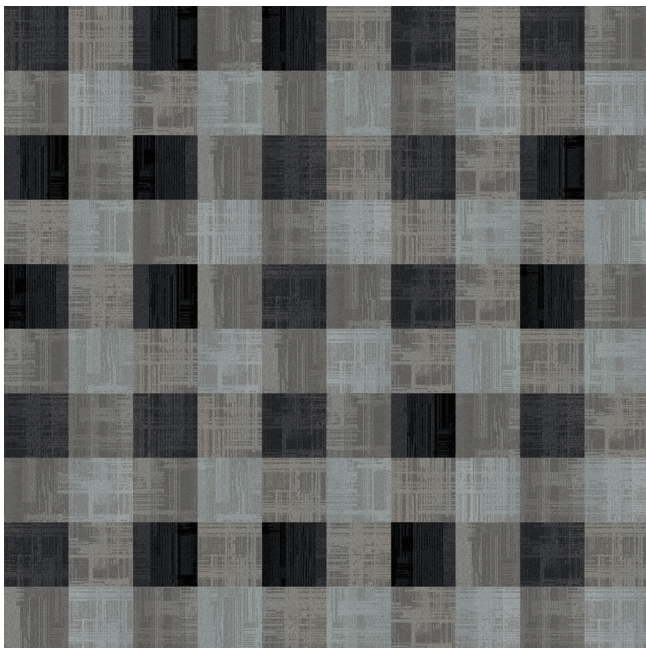
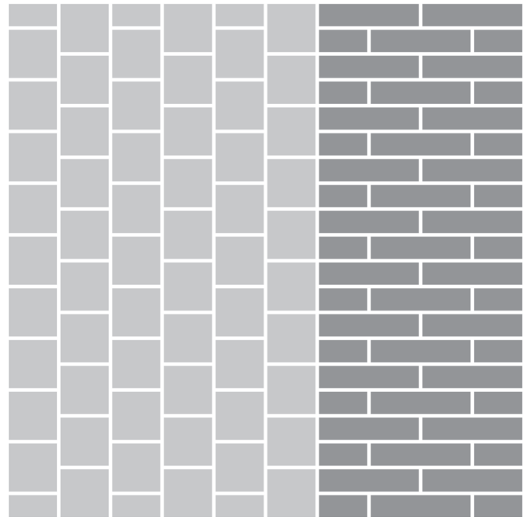


**Design Ideas** Below are floor layouts showing how to create the design ideas shared in some of the images featured in this brochure.

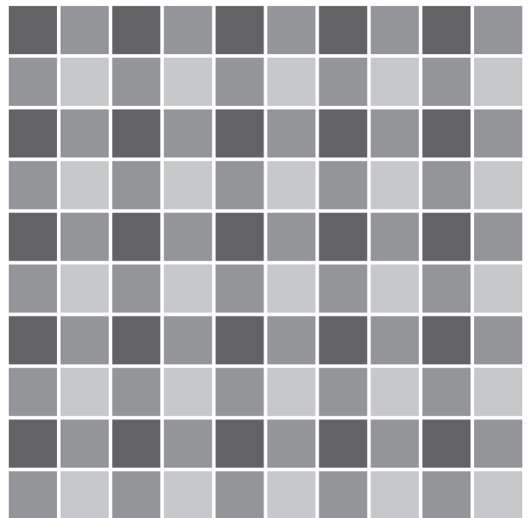
---



**PRODUCT** AE311 **COLOR** 104668 MIST **INSTALLED** ASHLAR  
**PRODUCT** AE312 **COLOR** 105410 IRON/ACCENT **INSTALLED** BRICK



**PRODUCT** AE310 **COLORS** 104621 MIST, 104625 GREIGE, 104628 INK **INSTALLED** PATTERN BY TILE (NON DIRECTIONAL)





## Why Our Modular Carpet?



### Modular Carpet Tile

*Performance and Flexibility.* Interface's modular carpet tile sets the industry standard for performance. Tiles are designed to stay on the floor with no upcurl, tapping or rippling. Our square and plank tiles are easier to handle, install and maintain. They install with just 3-4% waste – and as little as 1.5% for i2® non directional styles – compared to an average 14% for traditional roll carpet. And our i2 styles are mergeable so tiles from multiple dye lots will always blend, even when selectively replaced years later.



### Intersept®

*Mold Protection.* Our proprietary preservative, Intersept, protects our modular carpet against mold growth and odor-causing bacteria — guaranteed. Intersept treated carpet, with proper maintenance, shows no mold or bacterial growth when tested per the ASTM E2471 Standard Test Method. Intersept is EPA approved for safe use in carpet, water insoluble and contains no halogens, heavy metals, phenols or formaldehyde.



### Carbon Neutral Floors™

*Create a climate fit for life.* All Interface flooring sold globally is third party verified carbon neutral. We've taken a holistic approach to achieve carbon neutrality, first through reducing the carbon footprint of our products and then using carbon offsets for the remainder, including the emissions from raw materials, our manufacturing processes and product use to end of life.



### ReEntry®

*Recyclable is Now a Reality.* Through our ReEntry program and partnerships with our fiber suppliers and recycling centers throughout North America, separated Type 6 and 6,6 nylon are recycled into new 6 and 6,6 nylon, while separated GlasBac® and similar competitor backings are recycled into GlasBacRE non-virgin PVC backing using our Cool Blue™ technology. The result? Products with up to 89% total recycled content, including as much as 27% post-consumer content.



### TacTiles®

*No Glue Installation.* Our revolutionary TacTiles installation system eliminates the need for glue, adhering tiles securely together to form a floor that "floats" for greater flexibility, easier replacement and long-term performance. The result? Less mess, less waste and virtually no VOCs, not to mention an environmental footprint that is over 90% lower than that of traditional glue adhesives.



### Sustainable Choice

*Environmental Responsibility.* More than 95% of Interface products manufactured in the Americas carry the GreenCircle Certified Environmental Facts label, which has verified that standard Interface products are manufactured using 99% renewable energy and offer a minimum of 66% and 80% total recycled content when backed with GlasBac and GlasBacRE backing respectively. All Interface products include published HPDs (Health Product Declarations) or Declare Labels and more than 99% have a published EPD (Environmental Product Declaration) globally, and all products produced in the Americas are NSF/ANSI 140 gold or platinum certified.

## Third Party Certification



**Bureau Veritas** – All Interface flooring sold globally is third party verified carbon neutral.



**Environmental Product Declaration (EPD)** – A statement of product ingredients and environmental impacts over the entire life cycle of a product. A comprehensive life cycle assessment (LCA) is performed to ISO standards to develop an EPD, after which both the EPD and LCA must be third party verified.



**Sustainable Assessment for Carpet** – The only carpet sustainability standard in North America that evaluates the environmental impact of carpet for its entire lifecycle.



**CRI Green Label Plus** – An independent testing program that identifies carpet and adhesives with very low emissions of VOCs to help improve indoor air quality.