

Aerial Squares

AE310
AE312

Interface®

Aerial™ Squares

A view from above gives us the unique opportunity to witness connectivity. The web of connections fascinates and assures us. In Aerial, a simple neutral palette travels new paths when several hues are tangled together for each colorway. The way the shades shift in seemingly endless movements from one tile to the next is provocative and stirs attention.

The construction of AE310 recalls the warp and weft of a hand-woven textile while AE312 adds strands of color to light up that texture. The Aerial squares fit together effortlessly with the rest of the collection, creating a network of design possibilities to trace and discover.





AE310 Color Range



104621 MIST



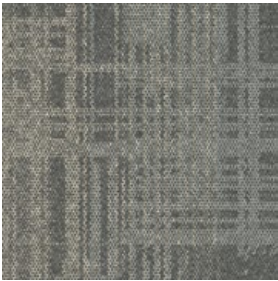
104622 FOG



104623 TAUPE



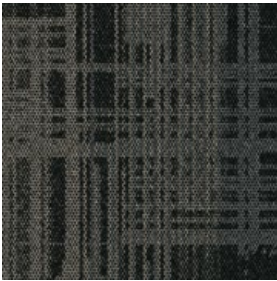
104624 CHESTNUT



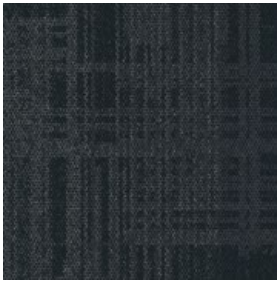
104625 GREIGE



104626 IRON



104627 SMOKE



104628 INK



106574 MUSHROOM



106575 TOPAZ

Specifications **i2**

Modular, 50 cm x 50 cm	13882
Yarn Manufacturer	Aquafil
Yarn System	100% Recycled Content Nylon
Dye Method	100% Solution Dyed
Construction	Tufted Textured Loop
Preservative Protection	Intersept®
Soil/Stain Protection	Protek ¹² ™
Pile Thickness	0.10 in, 2.5 mm
Pile Density	5,760 oz/yd³
Total Recycled Content	68%
Indoor Air Quality	CRI Green Label Plus #GLP0820

View the full product specification on [interface.com](#)

Installation Method



NON DIRECTIONAL



BROWSE IMAGES
ORDER SAMPLES



PRODUCT AE310 COLOR SMOKE INSTALLED NON DIRECTIONAL



PRODUCT AE312 COLOR SMOKE/ACCENT INSTALLED BRICK

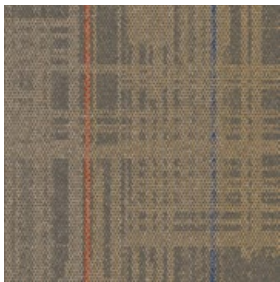
AE312 Color Range



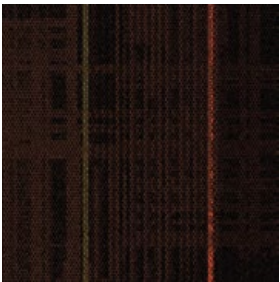
105405 MIST/ACCENT



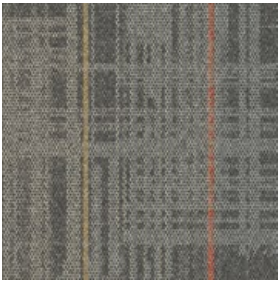
105406 FOG/ACCENT



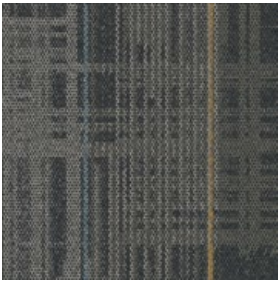
105407 TAUPE/ACCENT



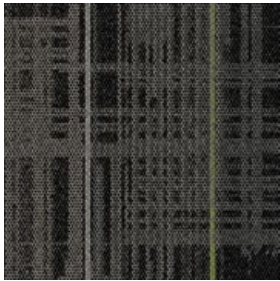
105408 CHESTNUT/ACCENT



105409 GREIGE/ACCENT



105410 IRON/ACCENT



105411 SMOKE/ACCENT



105412 INK/ACCENT

Specifications **i2**

Modular, 50 cm x 50 cm	13891
Yarn Manufacturer	Aquafil
Yarn System	100% Recycled Content Nylon
Dye Method	100% Solution Dyed
Construction	Tufted Textured Loop
Preservative Protection	Intersept®
Soil/Stain Protection	Protekt ² ™
Pile Thickness	0.10 in, 2.5 mm
Pile Density	5,760 oz/yd ³
Total Recycled Content	68%
Indoor Air Quality	CRI Green Label Plus #GLP0820

View the full product specification on [interface.com](#)

Installation Methods



BRICK



QUARTER-TURN

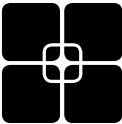


BROWSE IMAGES
ORDER SAMPLES

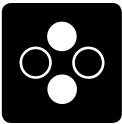
Why Our Modular Flooring?



i2® Modular Carpet
Minimize waste & save money. Interface's i2® styles have mergeable dye lots. That means i2 tiles from different dye lots always blend with tiles of the same color, even when individual tiles are selectively replaced years later. This minimizes the need for attic stock and saves money. And i2 styles that install non directionally generate an average of only 1.5% installation waste as compared to 3-4% for typical modular carpet and an average of 14% for traditional roll carpet.



TacTiles™
No glue installation. Our revolutionary TacTiles installation system eliminates the need for glue, adhering tiles securely together to form a floor that “floats” for greater flexibility, easier replacement and long-term performance. The result? Less mess, less waste and virtually no VOCs, not to mention an environmental footprint that is over 90% lower than that of traditional glue adhesives. TacTiles are approved for use on GlasBac™, CQuest™GB, CQuest™Bio and CQuest™BioX.



Intersept®
Mold protection. Our proprietary preservative, Intersept, protects our modular carpet against mold growth and odor-causing bacteria—guaranteed. Intersept treated carpet, with proper maintenance, shows no mold or bacterial growth when tested per the ASTM E2471 Standard Test Method. Intersept is EPA approved for safe use in carpet, water insoluble and contains no halogens, heavy metals, phenols or formaldehyde. Intersept is standard in Interface carpet tile products backed with GlasBac, CQuestGB, ReadyBac™ and CushionBac Renew™.



Environmental Product Declaration (EPD)
A statement of product ingredients and environmental impacts over the entire life cycle of a product. A comprehensive life cycle assessment (LCA) is performed to ISO standards to develop an EPD, after which both the EPD and LCA must be third party verified.



Health Product Declaration (HPD)
A transparency tool for evaluating whether a product supports Green Chemistry. As part of our work on Health and Materials, Interface continuously reduces the environmental and health impacts of our products through elimination of materials of concern.



CRI Green Label Plus
An independent testing program that identifies carpet and adhesives with very low emissions of VOCs to help improve indoor air quality.



NSF 140 Sustainable Carpet Assessment
The only carpet sustainability standard in North America that evaluates the environmental impact of carpet for its entire life cycle.



ReEntry™
Recyclable. Through our ReEntry program we reclaim and recycle our carpet tile and Sound Choice™ LVT. ReEntry is the only third party certified recycling system among North American flooring manufacturers.



Sustainability Transparency
Transparency and certified sustainability leadership come standard on Interface products. We enlist outside partners to help us evaluate the entire product life cycle and reduce the environmental and human health impact of our flooring. And, carpet products made in our US facilities are made with 99% renewable energy.

📍 **Samples**

Register and order samples at interface.com. Not near a computer? You can also request samples by calling one of the numbers below.

United States
1.877.605.1500

Canada
1.866.398.3192

interface.com

- Do more on interface.com
- Browse products and order samples
 - Save and share favorites
 - See images of products in a variety of room scenes
 - Browse floor designs, change colors, upload your own image, download and share
 - Get full specifications, sustainability certifications and more
 - Check order status and inventory availability
 - Sign up to get the latest information on Interface products and news

InterCircle Sample Return

Help us close the loop on the carpet sampling process. Through our InterCircle Sample Return program, sample materials stay out of the landfill and are re-used as samples until it is time to recycle them into new carpet. By reducing sample production material and diverting old materials from the landfill, we can reduce our overall environmental footprint.

Call 1.877.605.1500 (U.S.) or 1.866.398.3192 (Canada) to order a sample return bag with a prepaid return label.

We have tried our very best to accurately represent product colors. However, due to the nature of printed materials, color of actual products may vary slightly. Please request a sample to see actual product color.

All product specifications reflect averages derived from product sample testing, are subject to normal manufacturing and testing tolerances and inherent pattern variances, and may be changed without notice. For more information about these and other important attributes of the product(s) described herein, including recycled content and product warranty information, please see interface.com/disclaimer.



Printed on 50% post consumer waste (PCW)
fiber manufactured using wind power.

interface.com

United States Headquarters

1280 West Peachtree Street NW
Atlanta, GA 30309
1.800.634.6032

Canadian Headquarters

233 Lahr Drive
Belleville, ON K8N 5S2
1.800.267.2149 ext. 52128

CIM# IFS00740 05/2024



Climate change is undeniable. And
reversible. Our mission is to prove it.
**Join the #ClimateTakeBack and
help create a climate fit for life.**