

Aerial Planks

Aerial Planks AE311 | AE313

A view of the city from above gives us the unique opportunity to witness connectivity; a web of links that both fascinates and assures us. In Aerial, a simple neutral palette travels new paths when several hues tangle together in each colourway, bringing this inspiration to life.

The Aerial Planks series comprise an intricate base pattern, and a muted accent option. The base style, Aerial AE311™ features organic brush stroke patterns while its partner Aerial AE313™ introduces a subtle wash of colour to this neutral foundation. These two work beautifully hand-in-hand to provide a fluid flow of colour and pattern from one space to the next.

Expand further with Aerial AE310™, our 50cm x 50cm square version of the Aerial pattern, for an added layer of design. With its multi-faceted design and coordinated palette, the styles of Aerial create a network of design possibilities that is simply waiting to be discovered!





AE311 Colour Range



7922001 MIST



7922002 FOG



7922003 TAUPE



7922004 CHESTNUT



7922005 GREIGE



7922006 IRON



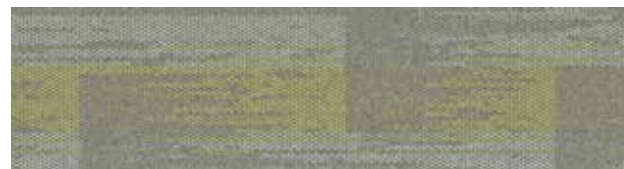
7922007 SMOKE



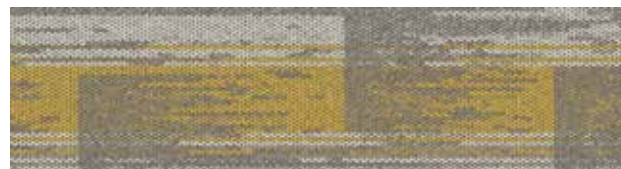
7922008 INK



AE313 Colour Range



8187001 MIST/ALOE



8187002 FOG/CITRUS



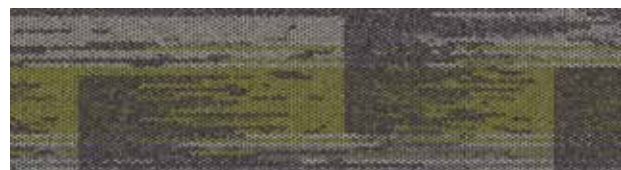
8187003 TAUPE/FLANNEL



8187004 CHESTNUT/NAVY



8187005 GREIGE/HONEY



8187006 IRON/PRAIRIE



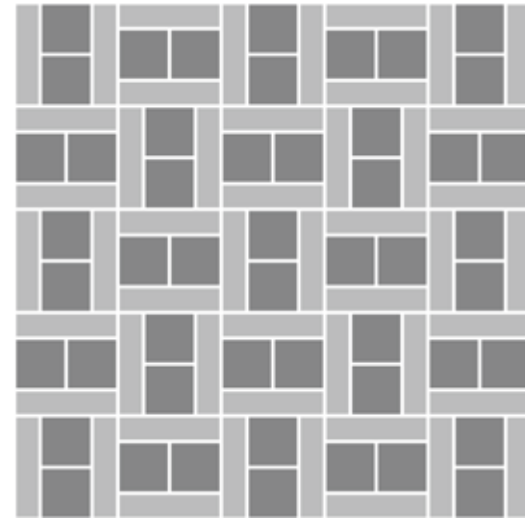
8187007 SMOKE/APPLE



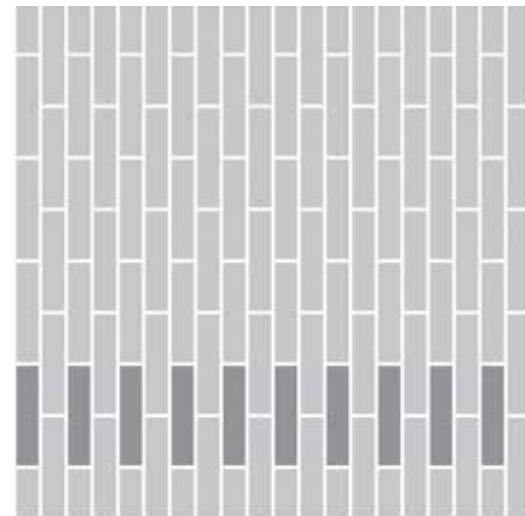
8187008 INK/OLIVE



Design Ideas Below are floor layouts showing how to create the design ideas shared in some of the images featured in this brochure.



PRODUCT AE313 COLOUR TAUPE/FLANNEL
PRODUCT AE310 COLOUR SMOKE
INSTALLED PATTERN BY TILE

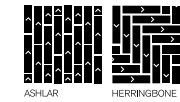


PRODUCT AE313 COLOURS MIST/ALOE, IRON/PRAIRIE
INSTALLED PATTERN BY TILE

Specifications

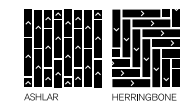
AE311™ **i2**

Style Code	7922
Product Construction	Tufted Textured Loop
Yarn System	100% Recycled Solution Dyed Nylon
Machine Gauge	1/12
Pile Thickness	2.5mm +/- 0.5mm
Total Thickness	6.0mm +/- 0.5mm
Tile Size	25cm x 100cm
Area of Use	Commercial – Heavy Use
ACCS (Australia Only)	Commercial Extra Heavy Duty & Stairs
Lifetime Antimicrobial	Intersept®
Soil/Stain Protection	Protekt ² ®
Installation Methods	Ashlar, Herringbone



AE313™ **i2**

Style Code	8187
Product Construction	Tufted Textured Loop
Yarn System	100% Recycled Solution Dyed Nylon
Machine Gauge	1/12
Pile Thickness	2.5mm +/- 0.5mm
Total Thickness	6.0mm +/- 0.5mm
Tile Size	25cm x 100cm
Area of Use	Commercial – Heavy Use
ACCS (Australia Only)	Commercial Heavy Duty & Stairs
Lifetime Antimicrobial	Intersept®
Soil/Stain Protection	Protekt ² ®
Installation Methods	Ashlar, Herringbone



Carbon Neutral Floors™



All Interface manufacturing facilities in the Asia Pacific region maintain registration to ISO 9001 Quality Management Systems and ISO 14001 Environmental Management Systems.

Production specifications are subject to normal manufacturing tolerances and may be changed without notice. Slight variation in colour among different production lots are normal and should be considered in the overall installation plan. Products covered by manufacturer's written warranty only. All other warranties, including without limitation any implied warranties of merchantability or fitness for particular purpose, are hereby disclaimed. Contact your representative for written warranty information.



Carbon Neutral Floors™

www.interface.com

Australia

Interface Australia
local toll free: 1800 804 361

India

Interface India
tel: +91 80 4613 1313

South East Asia

Interface Asia
tel: +65 6478 1510

South Korea

Interface South Korea
tel: +82 2 555 1734

Japan

Interface Japan
tel: +81 3 5733 5211

Beijing

Interface China
tel: +86 10 6590 7810

Hong Kong

Interface China
tel: +852 2802 0838

Shanghai

Interface China
tel: +86 21 6340 3868

11/2022
SF0088T0



Climate change is undeniable. And reversible. Our mission is to prove it.
Join the #ClimateTakeBack and help create a climate fit for life.