



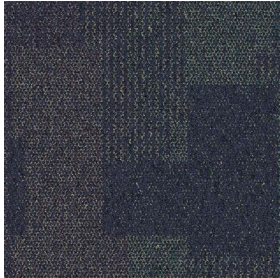
Cubic™ & Cubic Colours™

Interface®

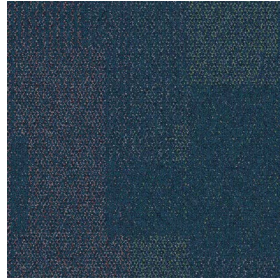




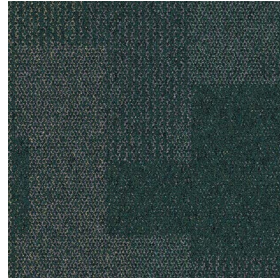
Cubic™ Colourline



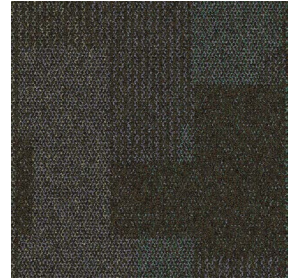
1151-001-000 Balance



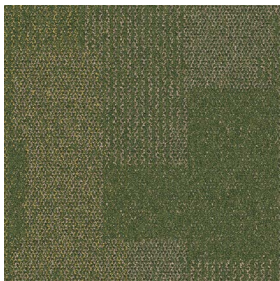
1151-002-000 Composition



1151-003-000 Vertical



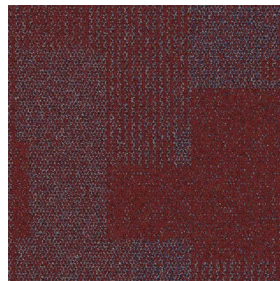
1151-004-000 Horizontal



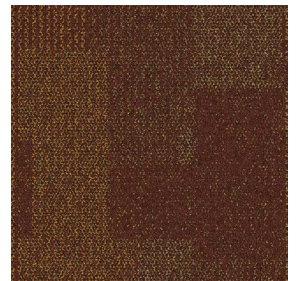
1151-005-000 Depth



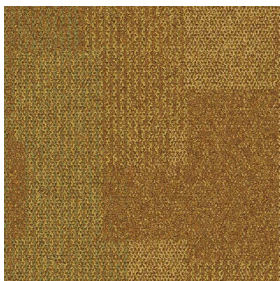
1151-006-000 Concept



1151-007-000 Supports



1151-008-000 Length



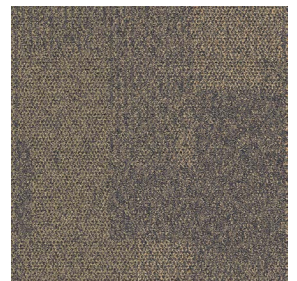
1151-009-000 Width



1151-010-000 Dimension



1151-011-000 Height



1151-012-000 Diagonal



1151-013-000 Construction

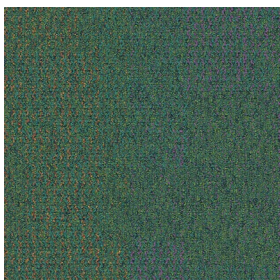


1151-014-000 Movement

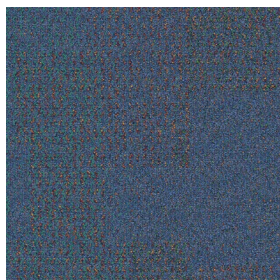


1151-015-000 Purpose

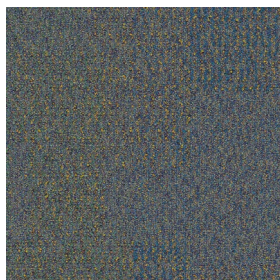
Cubic Colours™ Colourline



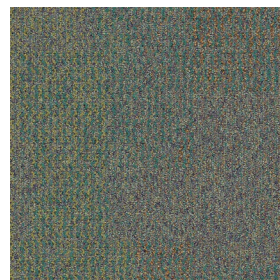
1153-001-000 Parrot



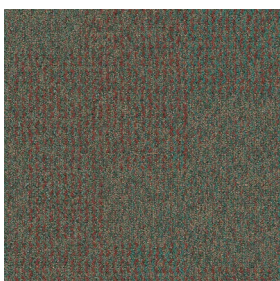
1153-002-000 Blue Lagoon



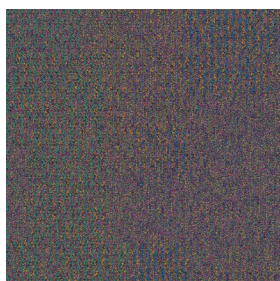
1153-003-000 Iridescent



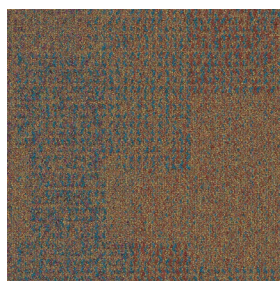
1153-004-000 Abalone



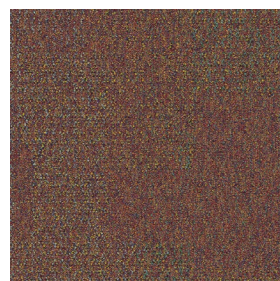
1153-005-000 Chameleon



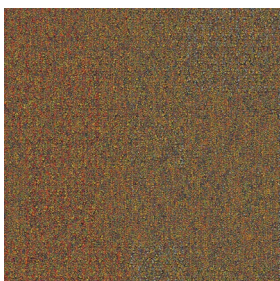
1153-006-000 Northern Light



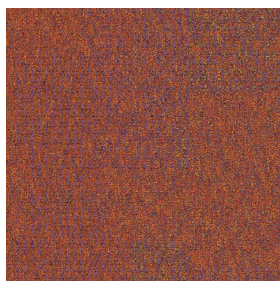
1153-007-000 Mosaic



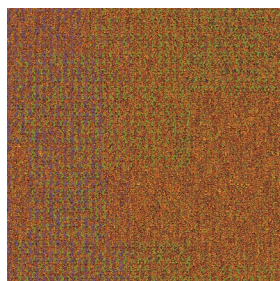
1153-008-000 Kaleidoscope



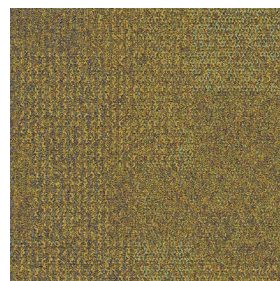
1153-009-000 Tapestry



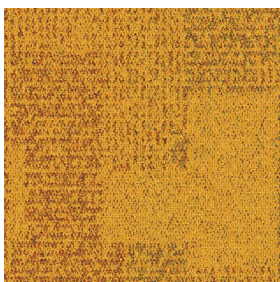
1153-010-000 Carnival



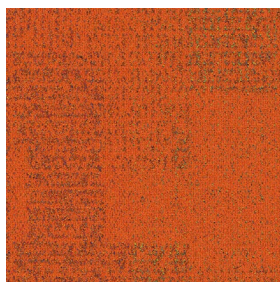
1153-011-000 Painted Desert



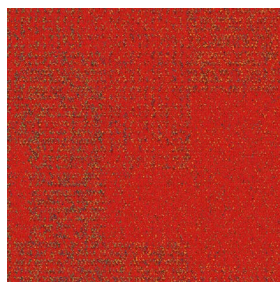
1153-012-000 Sunflower



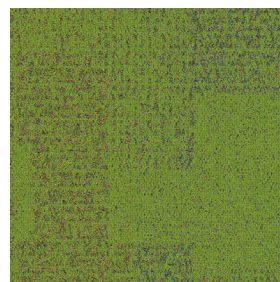
1153-013-000 Yellow



1153-014-000 Orange

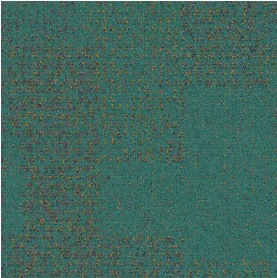


1153-015-000 Red

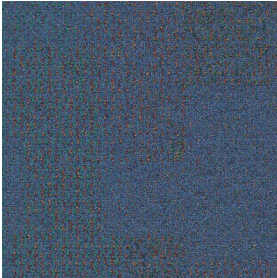


1153-016-000 Green

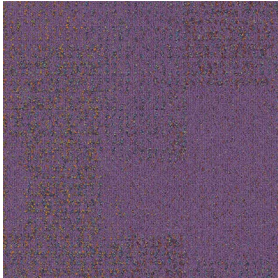
Cubic Colours™ Colourline



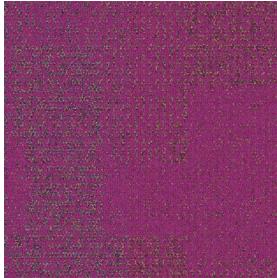
1153-017-000 Teal



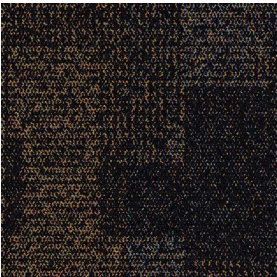
1153-018-000 Blue



1153-019-000 Violet



1153-020-000 Magenta

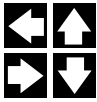


1153-021-000 Black

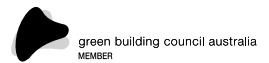
Specifications

Cubic™ & Cubic Colours™

Style Code	Cubic 1151 Pattern 000 Cubic Colours 1153 Pattern 000
Product Definition	Tufted Textured Loop
Yarn/Fibre	100% Non-virgin Type 6 Nylon
Colour System	100% Solution Dyed
Machine Gauge	1/12
Pile Thickness	2.5mm +/- 0.5mm
Total Thickness	6.5mm +/- 0.5mm
Tile Size	50cm x 50cm
Area of Use	Commercial – Heavy Duty
Lifetime Antimicrobial	Intersept®
Soil/Stain Protection	Protekt2®
Total Recycled Content	GlasBac® 65% to 70% Recycled Content GlasBac®RE 80% to 85% Recycled Content
Installation Methods	Non-directional



Non-directional



CoolCarpet™
Intersept®

Production specifications are subject to normal manufacturing tolerances and may be changed without notice. Slight variation in colour among different production lots are normal and should be considered in the overall installation plan. Products covered by manufacturer's written warranty only. All other warranties, including without limitation any implied warranties of merchantability or fitness for particular purpose, are hereby disclaimed. Contact your representative for written warranty information. Recycled content calculations are based on historical averages by total weight of the product for backings. Yarn/Fibre recycled content calculation excludes backing. We update our recycled content information and other environmental data regularly to reflect changes and advancements in our technology.

*Cool Carpet is not a standard option in Australia and New Zealand.

