

Cubic & Cubic Colours



Cubic™ & Cubic Colours™

It's only in our synthetic world that we want uniform perfection — one shade, no variation. If nature doesn't work that way, then why should we? Like fallen leaves on the forest floor, stones in the riverbed and flowers in a field, each Cubic & Cubic Colours carpet tile is unique; yet when installed, they blend into a cohesive pattern. As two of Interface's groundbreaking i2™ non directional products, Cubic & Cubic Colours can be installed using tiles from multiple dye lots and tiles can be set in any direction, which means there's less waste during production and installation. Cubic is offered in 41 neutral colorways. And, with Cubic Colours' dazzling selection of 21 colors ranging from bold primaries to candy-coated pastels to rich blues and greens, you can add a vibrant flair to any environment from retail to a pediatric clinic to the corporate think-tank.

Like all of our products made around the world, Cubic & Cubic Colours are carbon neutral—just one of the many steps we take toward creating a climate fit for life. Join the **#ClimateTakeBack** movement.



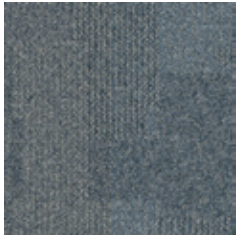
PRODUCT CUBIC COLOR 6386 HORIZONTAL INSTALLED NON DIRECTIONAL



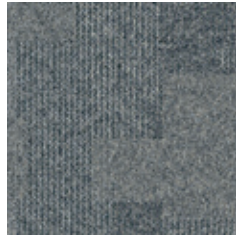


PRODUCT CUBIC COLOR 6392 DIMENSION INSTALLED NON DIRECTIONAL

Cubic™ Colorline



4287 SHAPE



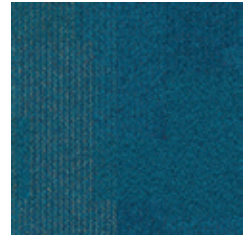
4288 GEOMETRY



4289 MATRIX



4290 PERIMETER



4291 SQUARE



4292 AREA



4294 SURFACE



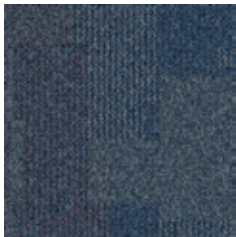
4295 SYMMETRY



4296 TRANSVERSE



4851 MEASUREMENT



4853 ANGLE



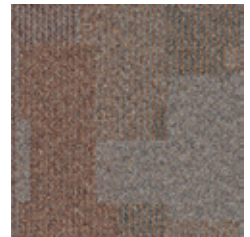
4855 OPTIC



4856 STRUCTURE



4857 FUNCTIONAL



4858 FORM



4860 AXIS

Specifications Cubic & Cubic Colours



Modular, 50cm x 50cm

Cubic:1380102500

Cubic Colours: 1382902500

GlasBac® Tile

Backing System

Aquafil

Yarn Manufacturer

100% Recycled Content Nylon

Yarn System

100% Solution Dyed

Color System

Tufted Textured Loop

Construction

Intersept®

Preservative Protection

Protekt²®

Soil/Stain Protection

Pile Thickness

0.093 in., 2.4 mm

Pile Density

6,968

Total Recycled Content

68%

Indoor Air Quality

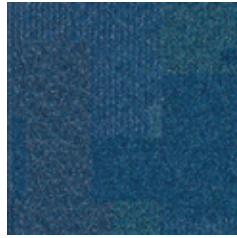
CRI Green Label Plus #GLP0820



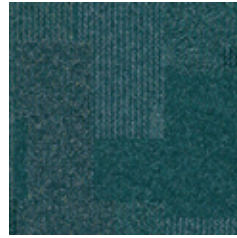
NON-DIRECTIONAL



6383 BALANCE



6384 COMPOSITION



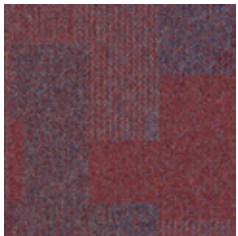
6385 VERTICAL



6386 HORIZONTAL



6387 DEPTH



6389 SUPPORTS



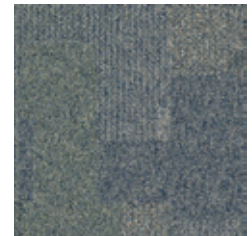
6390 LENGTH



6392 DIMENSION



6393 HEIGHT



6394 DIAGONAL



6395 CONSTRUCTION



6396 MOVEMENT



6397 PURPOSE



106068 SOAR



106069 MERIDIAN



106070 PRINCIPAL



106071 PITCH



106072 ZENITH



106073 ALTITUDE



106074 LOFTY



106075 CREST



106076 VERTEX



106077 PEAK

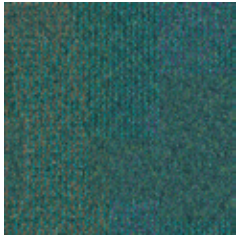


106078 SUMMIT

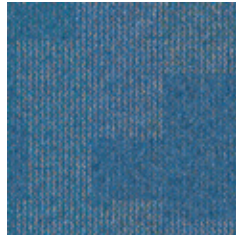


106079 PINNACLE

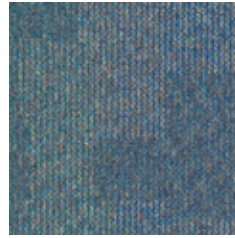
Cubic Colours™ Colorline



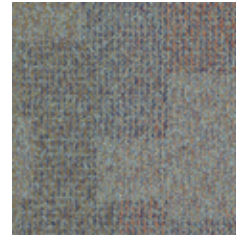
7248 PARROT



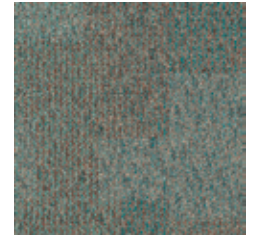
7249 BLUE LAGOON



7251 IRIDESCENT



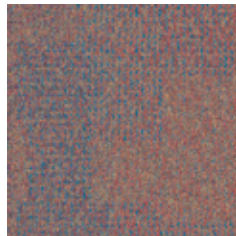
7252 ABALONE



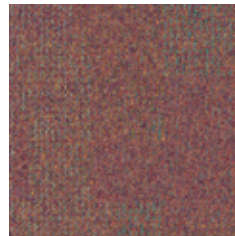
7253 CHAMELEON



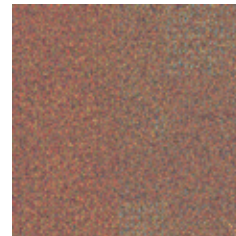
7254 NORTHERN LIGHTS



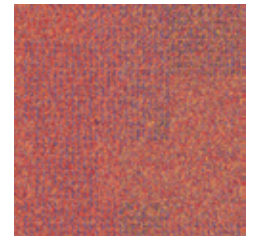
7255 MOSAIC



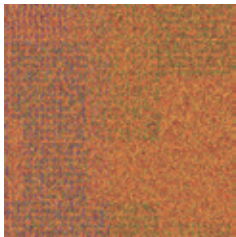
7256 KALEIDOSCOPE



7257 TAPESTRY



7258 CARNIVAL



7259 PAINTED DESERT



7260 SUNFLOWER



7261 YELLOW



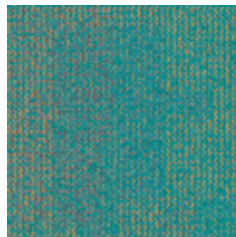
7262 ORANGE



7263 RED



7264 GREEN



7265 TEAL



7266 BLUE



7267 VIOLET



7268 MAGENTA



7269 BLACK



PRODUCT CUBIC COLOURS COLOR 7269 BLACK INSTALLED NON DIRECTIONAL

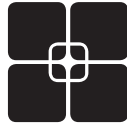
Why Our Modular Flooring?



i2® Modular Carpet

Minimize waste & save money.

Interface's i2™ styles have mergeable dye lots. That means i2 tiles from different dye lots always blend with tiles of the same color, even when individual tiles are selectively replaced years later. This minimizes the need for attic stock and saves money. And i2 styles that install non directionally generate an average of only 1.5% installation waste as compared to 3-4% for typical modular carpet and an average of 14% for traditional roll carpet.



TacTiles™

No glue installation. Our revolutionary TacTiles installation system eliminates the need for glue, adhering carpet tiles securely together to form a floor that “floats” for greater flexibility, easier replacement and long-term performance. The result? Less mess, less waste and virtually no VOCs, not to mention an environmental footprint that is over 90% lower than that of traditional glue adhesives. TacTiles are approved for use on GlasBac™, GlasBacRE, CQuest™GB, Graphlar™ and Graphlex™.



Intersept®

Mold protection. Our proprietary preservative, Intersept, protects our modular carpet against mold growth and odor-causing bacteria—guaranteed. Intersept treated carpet, with proper maintenance, shows no mold or bacterial growth when tested per the ASTM E2471 Standard Test Method. Intersept is EPA approved for safe use in carpet, water insoluble and contains no halogens, heavy metals, phenols or formaldehyde. Intersept is standard in Interface carpet tile products backed with GlasBac, GlasBacRE, CQuestGB, ReadyBac™, and CushionBac Renew™.

Samples

Order samples at interface.com.

You'll receive email order confirmations, 24/7 access to order status and more. Not near a computer? You can also request samples by calling one of the numbers below.

United States
1.877.605.1500

Canada
1.866.398.3192

Brazil
+ 5511.2196.0900

Latin America
+ 52.55.6395.5100

interface.com

Register at interface.com to:

- Browse products and order samples
- View carpet in a variety of room scenes
- Browse floor designs, change colors, view as a grid or in a room, download and share
- Check order status and inventory availability
- Sign up to get the latest information on Interface products and news

InterCircle Sample Return

Help us close the loop on the carpet sampling process. Through our InterCircle Sample Return program, sample materials stay out of the landfill and are re-used as samples until it is time to recycle them into new carpet. By reducing sample production material and diverting old materials from the landfill, we can reduce our overall environmental footprint.

Call 1.877.605.1500 (U.S.) or 1.866.398.3192 (Canada) to order a sample return bag with a prepaid return label.



ReEntry™

Keep flooring out of landfills. Through our ReEntry program, we reclaim our carpet tile and Sound Choice™ LVT. Vinyl backed carpet tile is recycled into new CQuest™ GB carpet tile backing. The result? Carpet tile products with up to 85% total recycled content, including as much as 25% post-consumer content.



Sustainability Transparency

Transparency and certified sustainability leadership come standard on Interface products, including published ingredients in HPDs (Health Product Declarations) and published EPDs (Environmental Product Declarations), which are based on full life cycle assessment (LCA). And, Interface carpet products are certified to the NSF 140 Sustainable Carpet Assessment Standard. Additionally, Interface flooring and recommended adhesives are 3rd party certified for low VOC emissions in compliance with California Department of Public Health (CDPH) Standard Method v1.2–2017. Carpet products made in our US facilities are made with 99% renewable energy.



Carbon Neutral Floors™

The flooring products that we sell, including carpet tile, are carbon neutral across their full product life cycle through our third party verified Carbon Neutral Floors™ program. To find out more, visit interface.com/carbonneutralfloors.



Environmental Product Declaration (EPD) –

A statement of product ingredients and environmental impacts over the entire life cycle of a product. A comprehensive life cycle assessment (LCA) is performed to ISO standards to develop an EPD, after which both the EPD and LCA must be third party verified.



Gold Certified
NSF 140 • 2017 v1

Sustainable Assessment for Carpet – The only carpet sustainability standard in North America that evaluates the environmental impact of carpet for its entire lifecycle.



CRI Green Label Plus – An independent testing program that identifies carpet and adhesives with very low emissions of VOCs to help improve indoor air quality.



Printed on 50% post consumer waste (PCW) fiber manufactured using wind power.

All product specifications reflect averages derived from product sample testing, are subject to normal manufacturing and testing tolerances and inherent pattern variances, and may be changed without notice. For more information about these and other important attributes of the product(s) described herein, including recycled content and product warranty information, please see interface.com/disclaimer.

We have tried our very best to accurately represent product colors. However, due to the nature of printed materials, color of actual products may vary slightly. Please request a sample to see actual product color.

www.interface.com

United States Headquarters

1280 West Peachtree Street NW
Atlanta, GA 30309
1.800.634.6032

Canadian Headquarters

233 Lahr Drive
Belleville, ON K8N 5S2
1.800.267.2149 ext.52128

Brazilian Headquarters

Av. Das Nações Unidas 14261,
25 andar, sala 25- 122,
Brooklin Paulista,
São Paulo SP 04578 - 000 Brasil
+5511 2196-0900

Latin American Headquarters

Montes Urales # 415 Piso 6
Col. Lomas de Chapultepec
México City, CDMX,
C.P. 11000
Mexico
+ 52 55 2791 6812

CIM # IFS00625 04/2021



Climate change is undeniable. And reversible. Our mission is to prove it.
Join the #ClimateTakeBack and help create a climate fit for life.