



Printed on 50% post consumer waste (PCW)  
fiber manufactured using wind power.

**interface.com**

**United States Headquarters**  
1280 West Peachtree Street NW  
Atlanta, GA 30309  
1.800.634.6032

**Canadian Headquarters**  
233 Lahr Drive  
Belleville, ON K8N 5S2  
1.800.267.2149 ext. 52128

CIM # IFS00625 06/2023



Climate change is undeniable. And  
reversible. Our mission is to prove it.  
**Join the #ClimateTakeBack and  
help create a climate fit for life.**

# Cubic & Cubic Colours



**Interface®**



Cubic™ & Cubic Colours™

It's only in our synthetic world that we want uniform perfection — one shade, no variation. If nature doesn't work that way, then why should we? Like fallen leaves on the forest floor, stones in the riverbed and flowers in a field, each Cubic & Cubic Colours carpet tile is unique; yet when installed, they blend into a cohesive pattern. As two of Interface's groundbreaking i2™ non directional products, Cubic & Cubic Colours can be installed using tiles from multiple dye lots and tiles can be set in any direction, which means there's less waste during production and installation. Cubic is offered in a wide range of neutral and accent tones while its companion, Cubic Colours, offers more vibrant options. Add flair to any environment from a classroom to a pediatric clinic to the corporate think-tank.

Like all the flooring products we sell, Cubic & Cubic Colours are carbon neutral across their full product life cycle through our third party verified Carbon Neutral Floors™ program.







interface.com

PRODUCT CUBIC COLOR 106077 PEAK INSTALLED NON DIRECTIONAL



PRODUCT CUBIC COLOR 6392 DIMENSION INSTALLED NON DIRECTIONAL



Cubic™ Color Range



4287 SHAPE



4288 GEOMETRY



4289 MATRIX



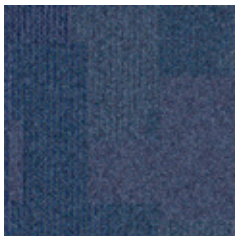
4290 PERIMETER



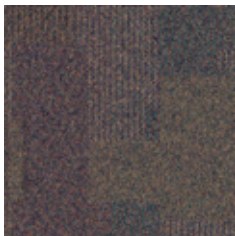
4291 SQUARE



4292 AREA



4294 SURFACE



4295 SYMMETRY



4296 TRANSVERSE



4851 MEASUREMENT



4853 ANGLE



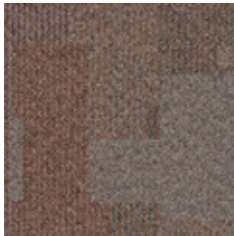
4855 OPTIC



4856 STRUCTURE



4857 FUNCTIONAL



4858 FORM



4860 AXIS



6383 BALANCE



6384 COMPOSITION



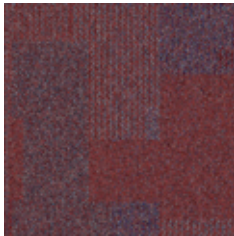
6385 VERTICAL



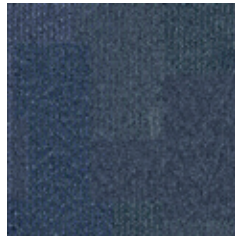
6386 HORIZONTAL



6387 DEPTH



6389 SUPPORTS



6392 DIMENSION



6393 HEIGHT



6395 CONSTRUCTION



6396 MOVEMENT



6397 PURPOSE



106068 SOAR



106069 MERIDIAN



106070 PRINCIPAL



106071 PITCH



106072 ZENITH



106073 ALTITUDE



106074 LOFTY



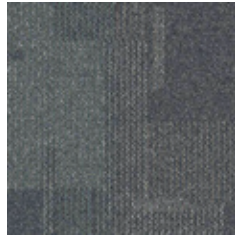
106075 CREST



106076 VERTEX



106077 PEAK



106078 SUMMIT



106079 PINNACLE

Specifications **i2**

Modular, 50 cm x 50 cm	13801
Yarn Manufacturer	Aquafil
Yarn System	100% Recycled Content Nylon
Dye Method	100% Solution Dyed
Construction	Tufted Textured Loop
Preservative Protection	Intersept®
Soil/Stain Protection	Protekt <sup>2</sup> ®
Pile Thickness	0.093 in, 2.4 mm
Pile Density	6,968 oz/yd³
Total Recycled Content	Up to 83%
Indoor Air Quality	CRI Green Label Plus #GLP0820

View the full product specification on [interface.com](#)

Installation Method



NON DIRECTIONAL



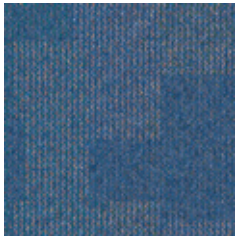
**BROWSE IMAGES**  
**ORDER SAMPLES**



Cubic Colours™ Color Range



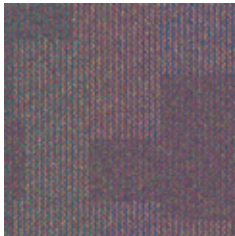
7248 PARROT



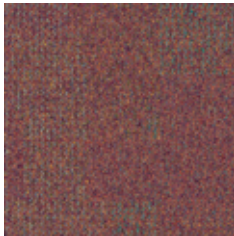
7249 BLUE LAGOON



7251 IRIDESCENT



7254 NORTHERN LIGHTS



7256 KALEIDOSCOPE



7266 BLUE



7269 BLACK

Specifications **i2**

Modular, 50 cm x 50 cm	13829
Yarn Manufacturer	Aquafil
Yarn System	100% Recycled Content Nylon
Dye Method	100% Solution Dyed
Construction	Tufted Textured Loop
Preservative Protection	Intersept®
Soil/Stain Protection	Protekt <sup>2®</sup>
Pile Thickness	0.093 in, 2.4 mm
Pile Density	6,968 oz/yd <sup>3</sup>
Total Recycled Content	Up to 83%
Indoor Air Quality	CRI Green Label Plus #GLP0820

View the full product specification on [interface.com](#)

Installation Method



NON DIRECTIONAL



**BROWSE IMAGES**  
**ORDER SAMPLES**

**PRODUCT** CUBIC COLOURS **COLOR** 7269 BLACK **INSTALLED** NON DIRECTIONAL





Why Our Modular Flooring?



i2® Modular Carpet

*Minimize waste & save money.* Interface's i2® styles have mergeable dye lots. That means i2 tiles from different dye lots always blend with tiles of the same color, even when individual tiles are selectively replaced years later. This minimizes the need for attic stock and saves money. And i2 styles that install non directionally generate an average of only 1.5% installation waste as compared to 3-4% for typical modular carpet and an average of 14% for traditional roll carpet.



TacTiles™

*No glue installation.* Our revolutionary TacTiles installation system eliminates the need for glue, adhering tiles securely together to form a floor that “floats” for greater flexibility, easier replacement and long-term performance. The result? Less mess, less waste and virtually no VOCs, not to mention an environmental footprint that is over 90% lower than that of traditional glue adhesives. TacTiles are approved for use on GlasBac™, CQuest™GB, CQuest™Bio and CQuest™BioX.



Intersept®

*Mold protection.* Our proprietary preservative, Intersept, protects our modular carpet against mold growth and odor-causing bacteria—guaranteed. Intersept treated carpet, with proper maintenance, shows no mold or bacterial growth when tested per the ASTM E2471 Standard Test Method. Intersept is EPA approved for safe use in carpet, water insoluble and contains no halogens, heavy metals, phenols or formaldehyde. Intersept is standard in Interface carpet tile products backed with GlasBac, CQuestGB, ReadyBac™ and CushionBac Renew™.



ReEntry™

*Recyclable.* Through our ReEntry program we reclaim and recycle our carpet tile and Sound Choice™ LVT. ReEntry is the only third party certified recycling system among North American flooring manufacturers.



Sustainability Transparency

Transparency and certified sustainability leadership come standard on Interface products. We enlist outside partners to help us evaluate the entire product life cycle and reduce the environmental and human health impact of our flooring. And, carpet products made in our US facilities are made with 99% renewable energy.



Help Lower Your Carbon Footprint

Like all the flooring products we sell, Interface carpet tile is carbon neutral across its full product life cycle through our third party verified Carbon Neutral Floors™ program. To find out more, visit [interface.com/carbonneutral](https://www.interface.com/carbonneutral)



**Environmental Product Declaration (EPD) –** A statement of product ingredients and environmental impacts over the entire life cycle of a product. A comprehensive life cycle assessment (LCA) is performed to ISO standards to develop an EPD, after which both the EPD and LCA must be third party verified.



**Health Product Declaration (HPD) –** A transparency tool for evaluating whether a product supports Green Chemistry. As part of our work on Health and Materials, Interface continuously reduces the environmental and health impacts of our products through elimination of materials of concern.



**CRI Green Label Plus –** An independent testing program that identifies carpet and adhesives with very low emissions of VOCs to help improve indoor air quality.



**NSF 140 Sustainable Carpet Assessment –** The only carpet sustainability standard in North America that evaluates the environmental impact of carpet for its entire life cycle.

📍 Samples

Register and order samples at [interface.com](https://www.interface.com). Not near a computer? You can also request samples by calling one of the numbers below.

United States  
1.877.605.1500

Canada  
1.866.398.3192

[interface.com](https://www.interface.com)

- Do more on [interface.com](https://www.interface.com)
- Browse products and order samples
  - Save and share favorites
  - See images of products in a variety of room scenes
  - Browse floor designs, change colors, upload your own image, download and share
  - Get full specifications, sustainability certifications and more
  - Check order status and inventory availability
  - Sign up to get the latest information on Interface products and news

InterCircle Sample Return

Help us close the loop on the carpet sampling process. Through our InterCircle Sample Return program, sample materials stay out of the landfill and are re-used as samples until it is time to recycle them into new carpet. By reducing sample production material and diverting old materials from the landfill, we can reduce our overall environmental footprint.

Call 1.877.605.1500 (U.S.) or 1.866.398.3192 (Canada) to order a sample return bag with a prepaid return label.

We have tried our very best to accurately represent product colors. However, due to the nature of printed materials, color of actual products may vary slightly. Please request a sample to see actual product color.

All product specifications reflect averages derived from product sample testing, are subject to normal manufacturing and testing tolerances and inherent pattern variances, and may be changed without notice. For more information about these and other important attributes of the product(s) described herein, including recycled content and product warranty information, please see [interface.com/disclaimer](https://www.interface.com/disclaimer).