



Printed on 50% post consumer waste (PCW)
fiber manufactured using wind power.

We have tried our very best to accurately
represent product colors. However, due to
the nature of printed materials, color of actual
products may vary slightly. Please request a
sample to see actual product color.

www.interface.com

United States Headquarters
1280 West Peachtree Street NW
Atlanta, GA 30309
1.800.634.6032

Canadian Headquarters
233 Lahr Drive
Belleville, ON K8N 5S2
1.800.267.2149 ext.52128

Brazilian Headquarters
Rua Surubim, 577 - Conjuntos
73/74 7º Andar
04571-050 - São Paulo - SP
+ 55 11 2196 0900

Latin American Headquarters
Montes Urales # 415 Piso 6
Col. Lomas de Chapultepec
México City, D.F. 11000
Mexico
+ 52 55 6395 5100

CIM # IFS00841 11/2019

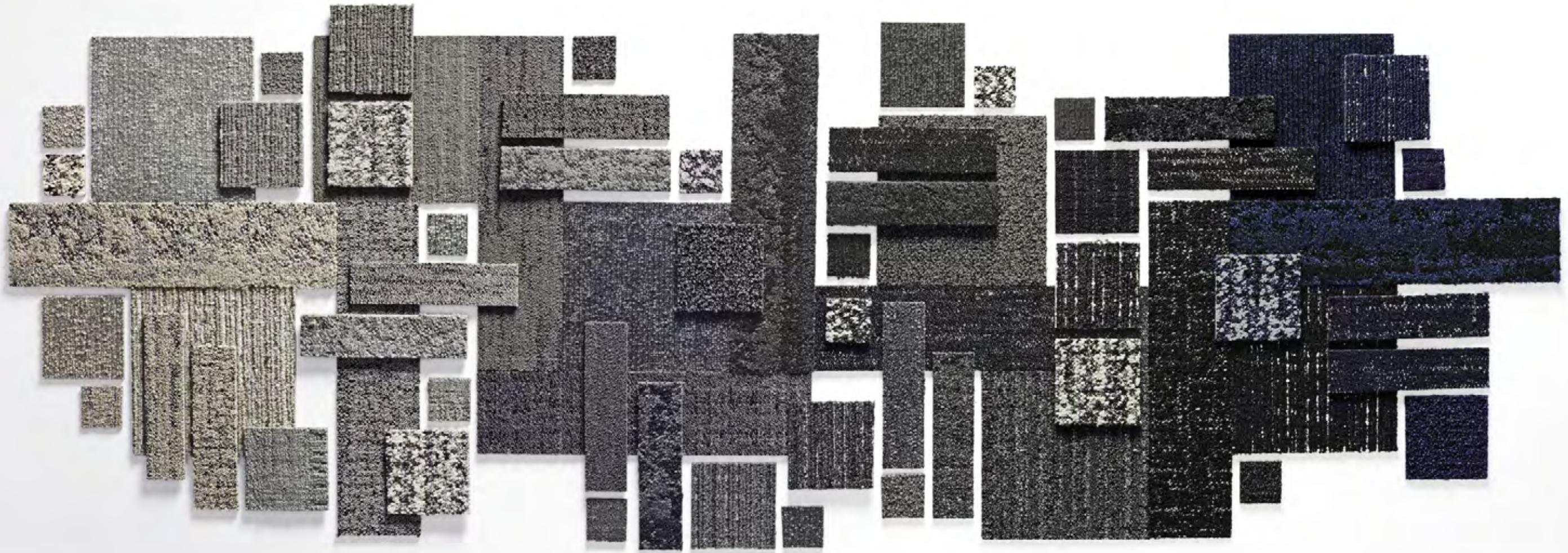


Climate change is undeniable. And
reversible. Our mission is to prove it.
**Join the #ClimateTakeBack and
help create a climate fit for life.**

5th Ave Collab

Interface®

5th Ave Collab



What is the perfect gray?

It's an answer that evolves with each season. As a true neutral, gray is foundational. Versatile. Timeless. So, there is no "perfect" gray, just perfect for you. Perfect for now.

Inspired by the well-known Manhattan thoroughfare, with its museums, high-end retail and luxury apartments, 5th Ave Collab features elevated palettes of gray that range from cool to warm, plush to flat, linear to organic. No matter your preference, you'll have a refined balance of neutral textures to uplift any space.

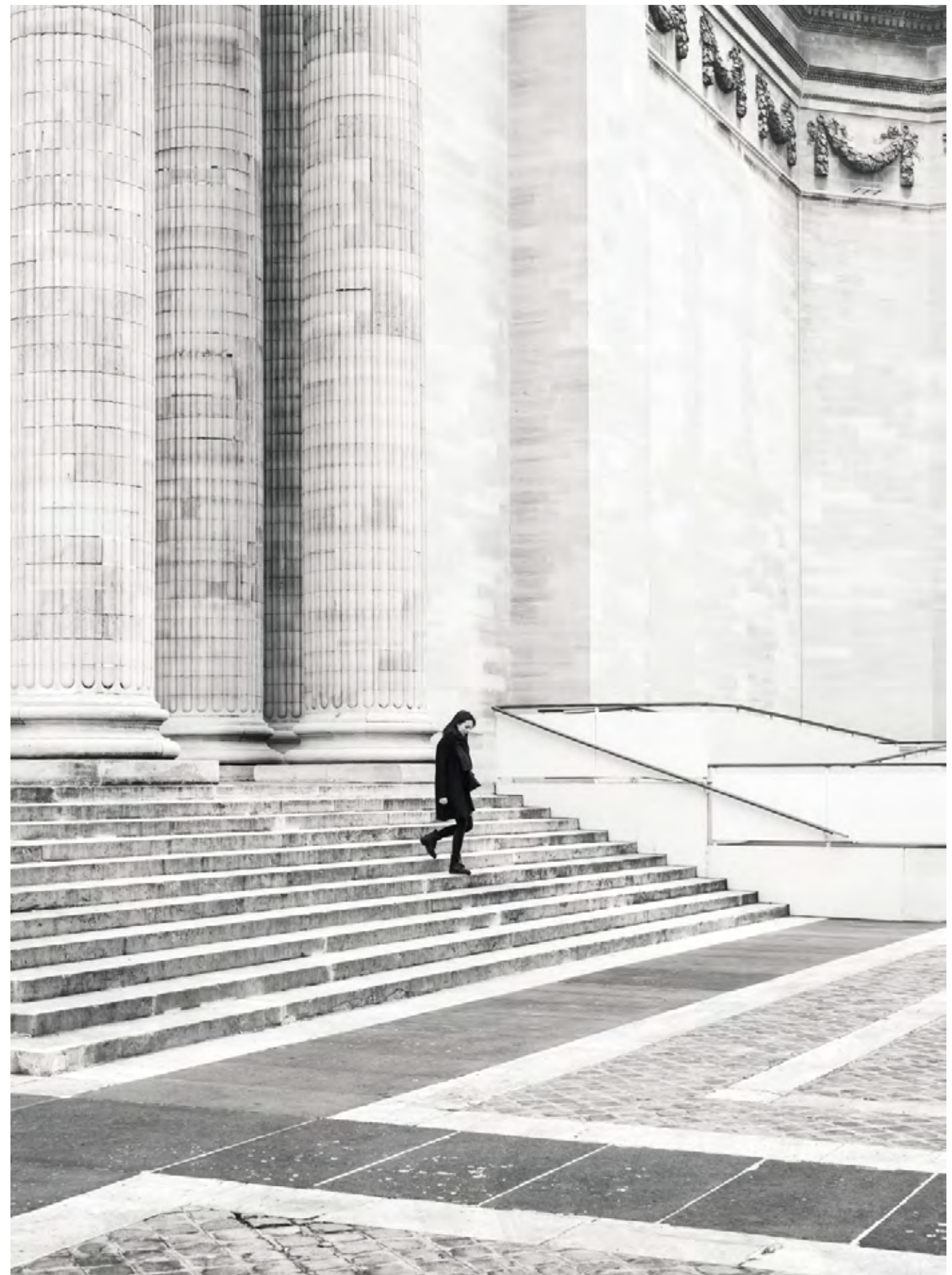
As part of our global product portfolio, each style in 5th Ave Collab is 100% carbon neutral. Impactful on the floor. Impactful on the planet. **Carbon Neutral Floors™**



Natural



www.interface.com





Cloud Cover™



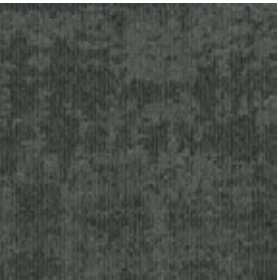
106477 NATURAL



106478 FOG



106517 TITANIUM



106480 PEWTER



106481 PEPPER



106482 INK



106483 BLACK



106484 INDIGO

Specifications

Modular, 50cm x 50cm	1378902500
Backing System	GlasBac® Tile
Yarn Manufacturer	Aquafil
Yarn System	100% Recycled Content Nylon
Color System	100% Solution Dyed
Construction	Tufted Cut & Loop
Preservative Protection	Intersept®
Soil/Stain Protection	Protekt2®
Pile Thickness	0.079 in., 2.0 mm
Pile Density	7,747
Total Recycled Content	76%
Indoor Air Quality	CRI Green Label Plus #GLP0820



Night Flight™



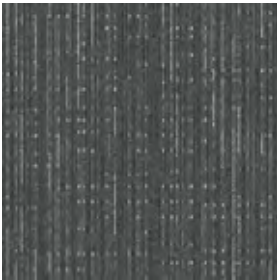
106469 NATURAL



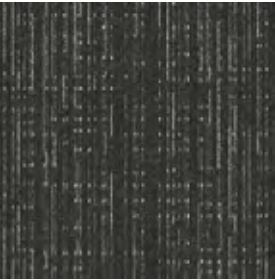
106470 FOG



106471 TITANIUM



106472 PEWTER



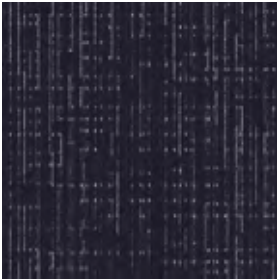
106473 PEPPER



106474 INK



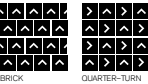
106475 BLACK



106476 INDIGO

Specifications

Modular, 50cm x 50cm	1287202500
Backing System	GlasBac® Tile
Yarn Manufacturer	Aquafil
Yarn System	100% Recycled Content Nylon
Color System	100% Solution Dyed
Construction	Tufted Pattern Loop
Preservative Protection	Intersept®
Soil/Stain Protection	Protekt2®
Pile Thickness	0.139 in., 3.5 mm
Pile Density	6,216
Total Recycled Content	77%
Indoor Air Quality	CRI Green Label Plus #GLP0820

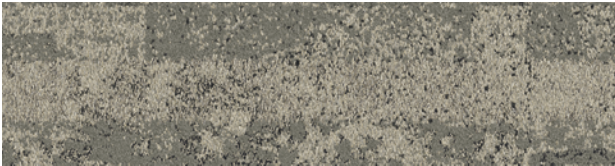


PRODUCT NIGHT FLIGHT | COLORS 106469 NATURAL, 106473 PEPPER | INSTALLED BRICK

Pewter



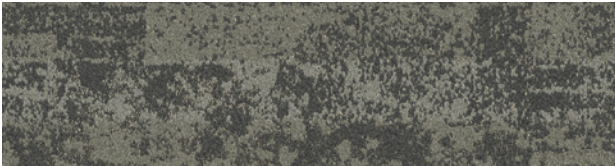
HN810



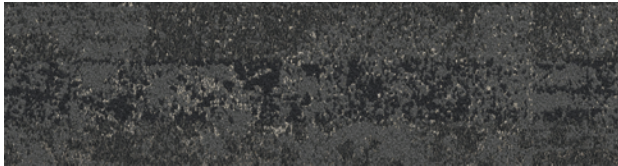
106485 NATURAL



106486 FOG



106487 TITANIUM



106488 PEWTER



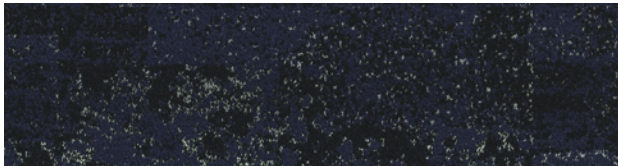
106489 PEPPER



106490 INK



106491 BLACK



106492 INDIGO

Specifications **i2**

Modular, 25 cm x 1 m	127610AK0H
Backing System	GlasBac®RE Tile
Yarn Manufacturer	Aquafil
Yarn System	100% Recycled Content Nylon
Color System	100% Solution Dyed
Construction	Tufted Sheared
Preservative Protection	Intersept®
Soil/Stain Protection	Protekt2®
Pile Thickness	0.212 in., 5.4 mm
Pile Density	5,774
Total Recycled Content	92% (28% Post-Consumer)
Indoor Air Quality	CRI Green Label Plus #GLP0820



PRODUCT HN810 COLOR 106488 PEWTER INSTALLED ASHLAR



Striation™



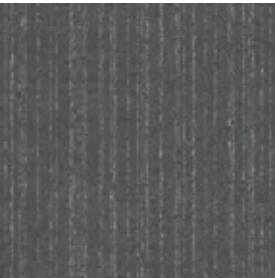
106461 NATURAL



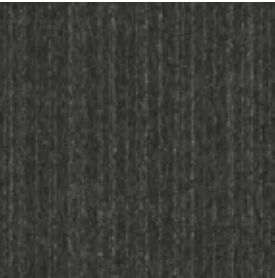
106462 FOG



106463 TITANIUM



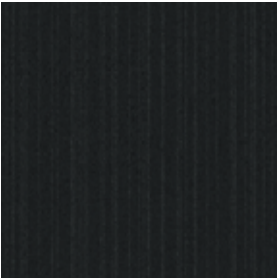
106464 PEWTER



106465 PEPPER



106466 INK



106467 BLACK



106468 INDIGO

Specifications

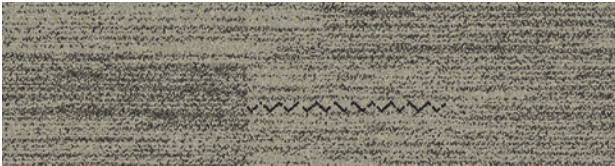
Modular, 50cm x 50cm	1392202500
Backing System	GlasBac® Tile
Yarn Manufacturer	Aquafil
Yarn System	100% Recycled Content Nylon
Color System	100% Solution Dyed
Construction	Tufted Sheared
Lifetime Antimicrobial	Intersept®
Pile Thickness	0.102 in., 2.6 mm
Pile Density	7,765
Total Recycled Content	76%
Indoor Air Quality	CRI Green Label Plus #GLP0820



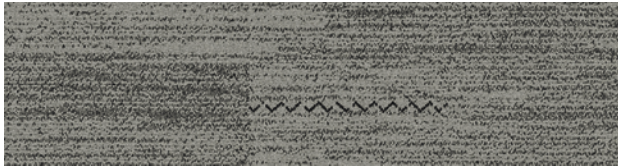
Black



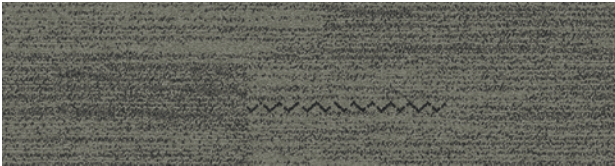
Darning™



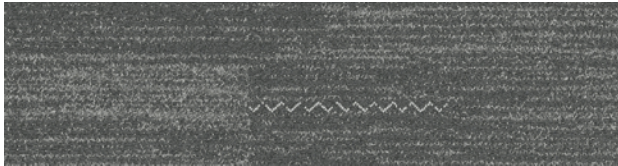
106445 NATURAL



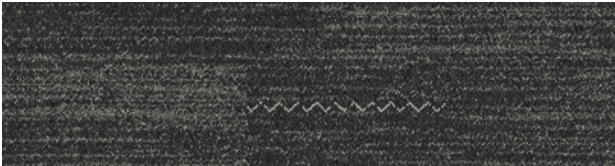
106446 FOG



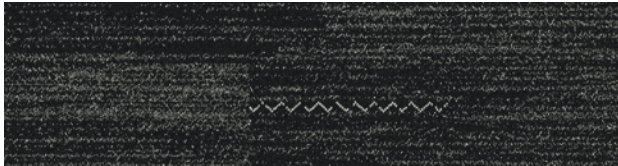
106447 TITANIUM



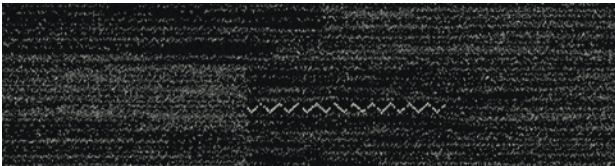
106448 PEWTER



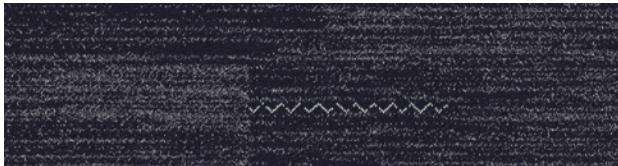
106449 PEPPER



106450 INK



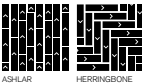
106451 BLACK



106452 INDIGO

Specifications

Modular, 25cm x 1m	139310AK00
Backing System	GlasBac® Tile
Yarn Manufacturer	Aquafil
Yarn System	100% Recycled Content Nylon
Color System	100% Solution Dyed
Construction	Tufted Pattern Loop
Preservation Protection	Intersept®
Soil/Stain Protection	Protekt ² ®
Pile Thickness	0.092 in., 2.3 mm
Pile Density	8,609
Total Recycled Content	76%
Indoor Air Quality	CRI Green Label Plus #GLP0820



PRODUCT DARNING COLOR 106451 BLACK INSTALLED ASHLAR



Tailored Touch™ (FLOR®)



104781 NATURAL



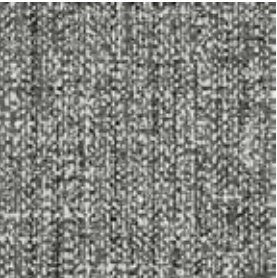
104783 BLACK



188452 FOG*



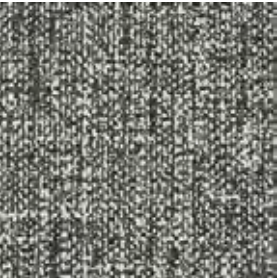
188453 TITANIUM*



188454 PEWTER*



188455 PEPPER*



188456 INK*



188457 INDIGO*

Specifications

Modular, 50cm x 50cm	1276302500
Backing System	GlasBac® Tile
Yarn Manufacturer	Aquafil
Yarn System	100% Recycled Content Nylon
Color System	100% Solution Dyed
Construction	Loop Pile
Preservation Protection	Intersept®
Soil/Stain Protection	Protekt ² ®
Pile Thickness	0.127 in., 3.2 mm
Pile Density	8,504
Total Recycled Content	78%
Indoor Air Quality	CRI Green Label Plus #GLP0820



Indigo





Menagerie™ II



101466 SHELL



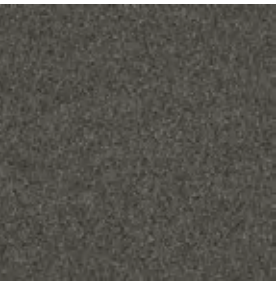
106442 CLOUD



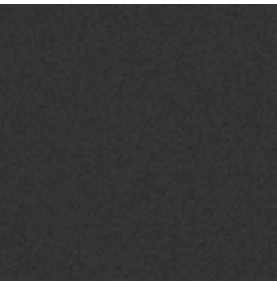
106443 TITANIUM



101469 BOULDER



101468 PEBBLE



101467 CHARCOAL



101473 STORM



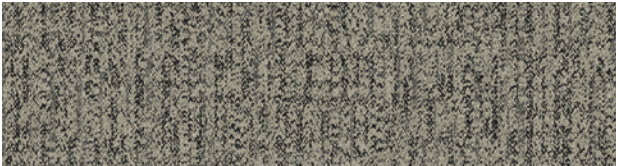
106444 INDIGO

Specifications

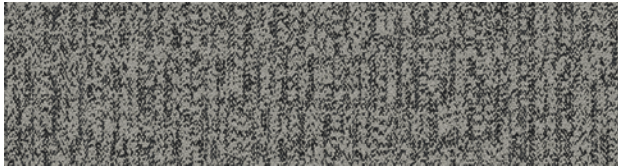
Modular, 50cm x 50cm	1385602500
Backing System	GlasBac® Tile
Yarn Manufacturer	Aquafil
Yarn System	100% Recycled Content Nylon
Color System	100% Solution Dyed
Construction	Tufted Textured Loop
Preservative Protection	Intersept®
Soil/Stain Protection	Protekt2®
Pile Thickness	0.149 in., 3.8 mm
Pile Density	5,799
Total Recycled Content	77%
Indoor Air Quality	CRI Green Label Plus #GLP0820



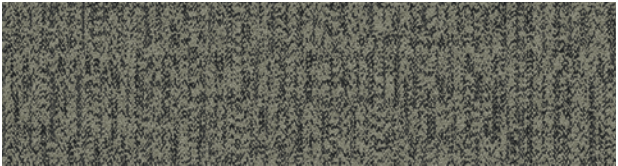
Haptic™



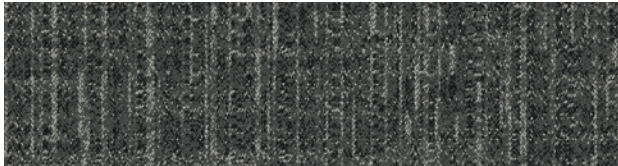
106453 NATURAL



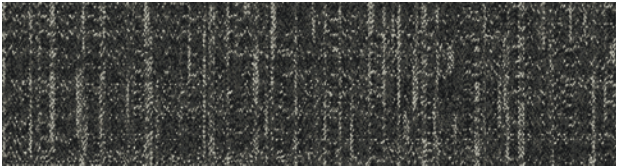
106454 FOG



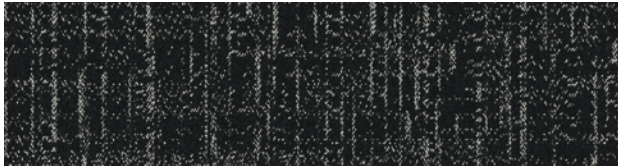
106455 TITANIUM



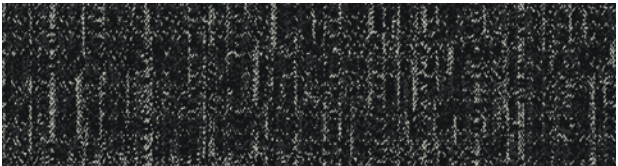
106456 PEWTER



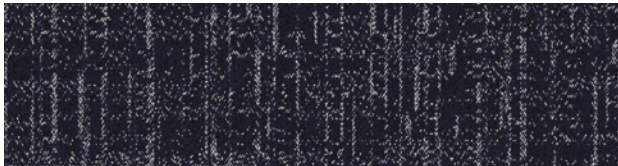
106457 PEPPER



106458 INK



106459 BLACK

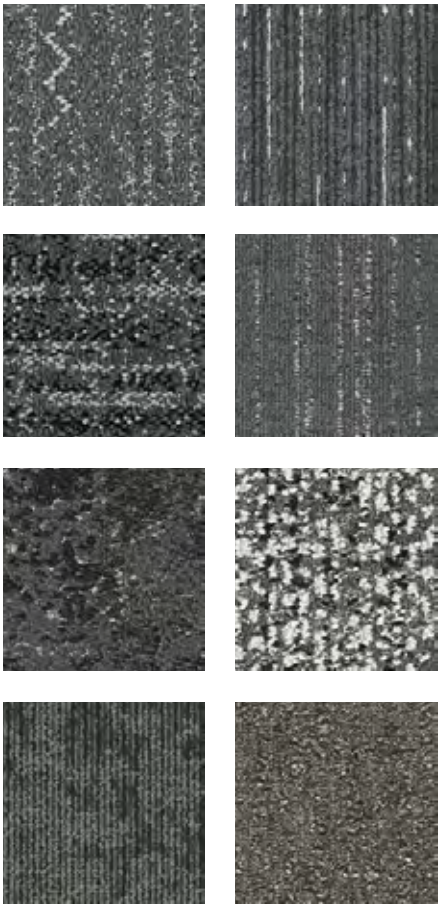
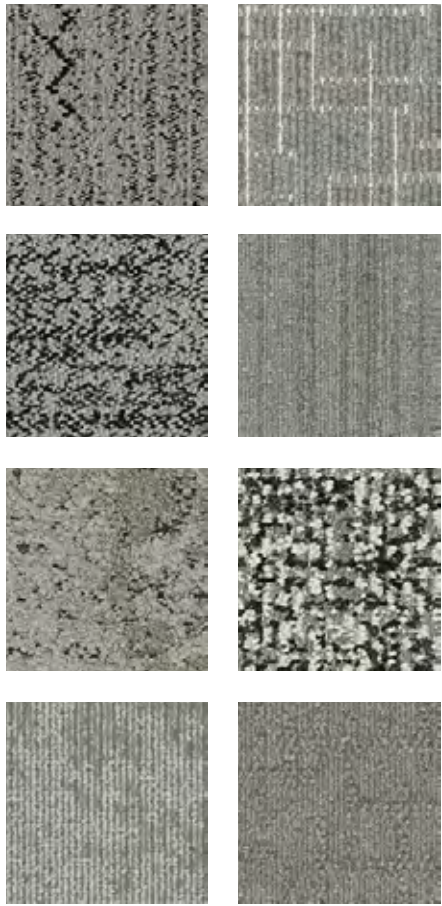
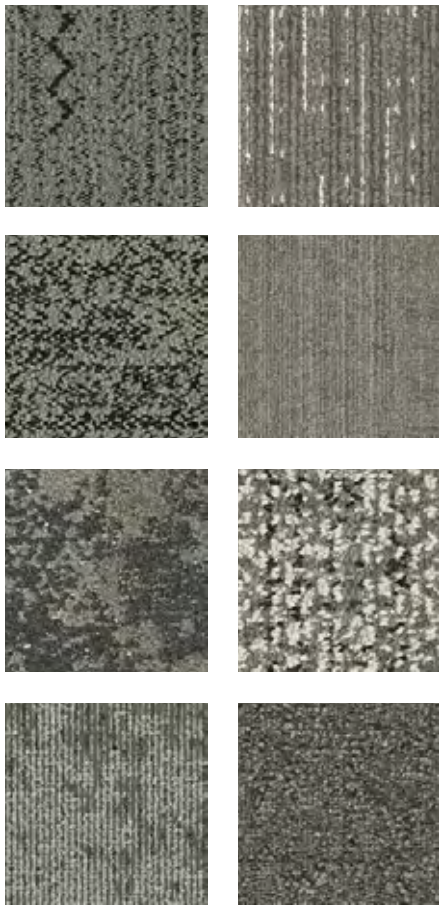
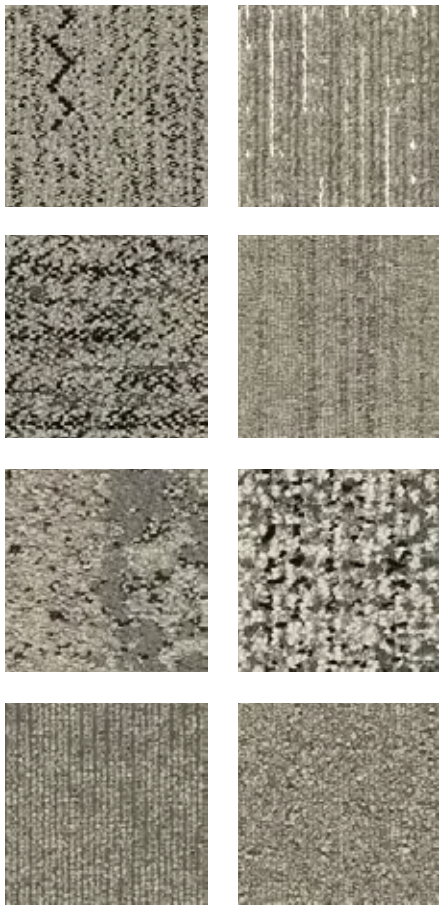
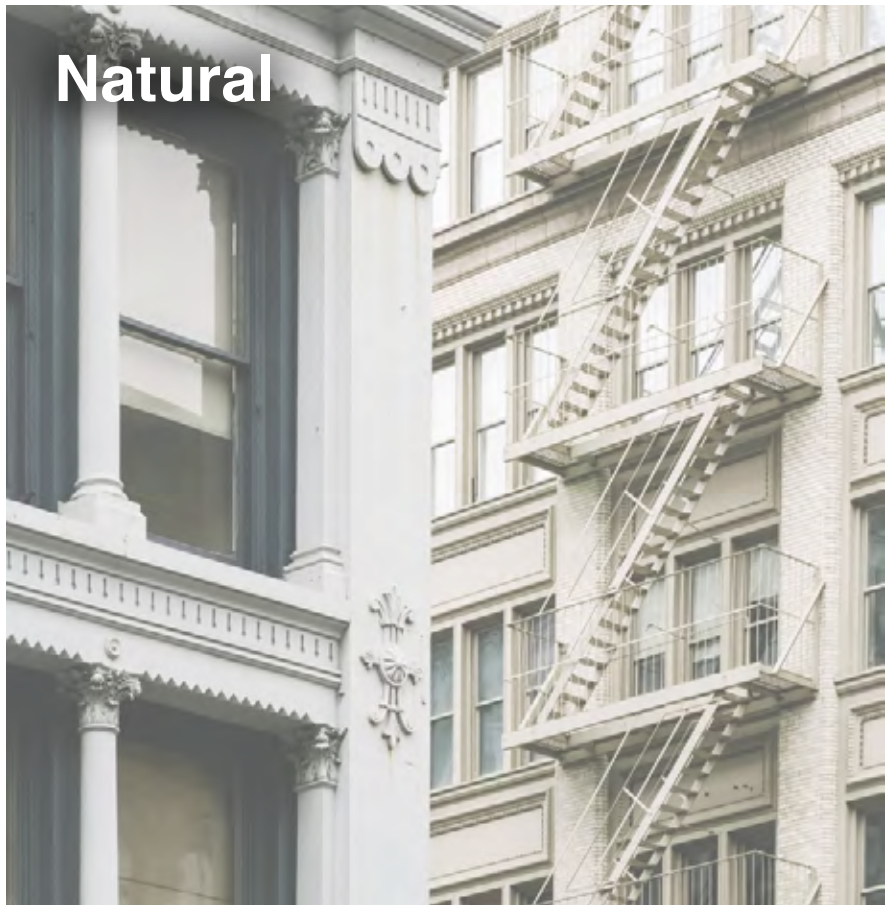


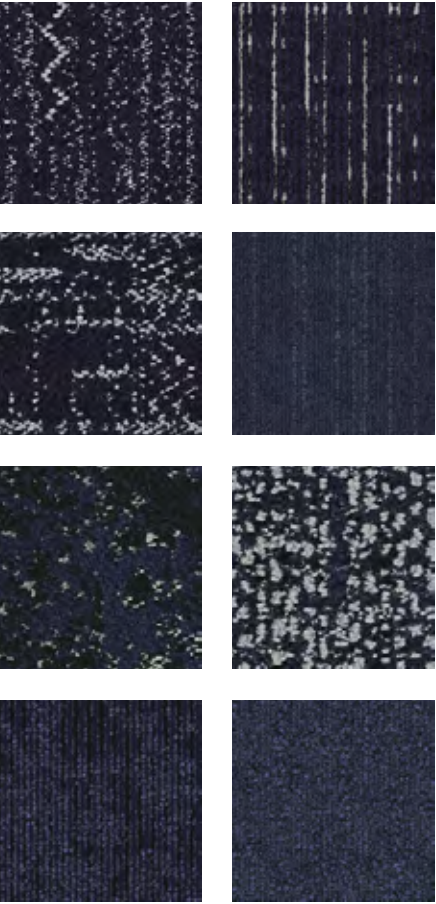
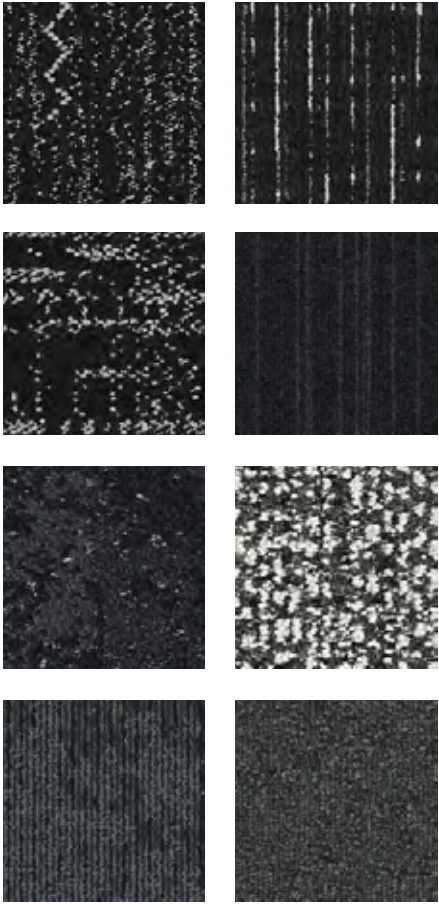
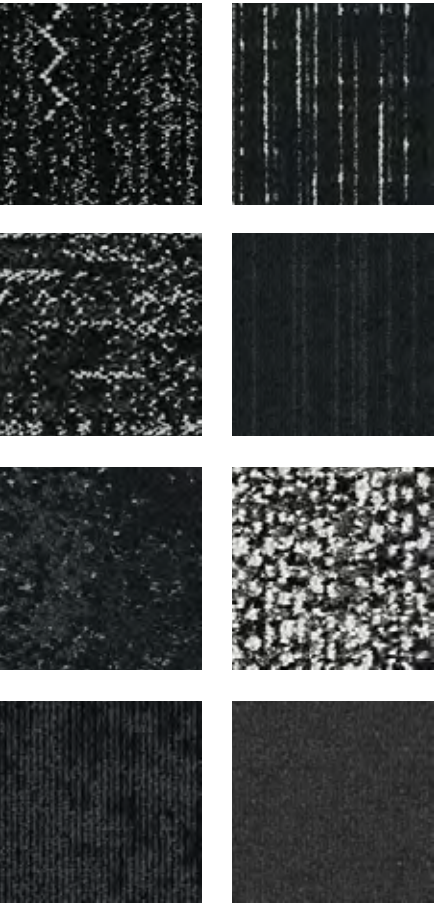
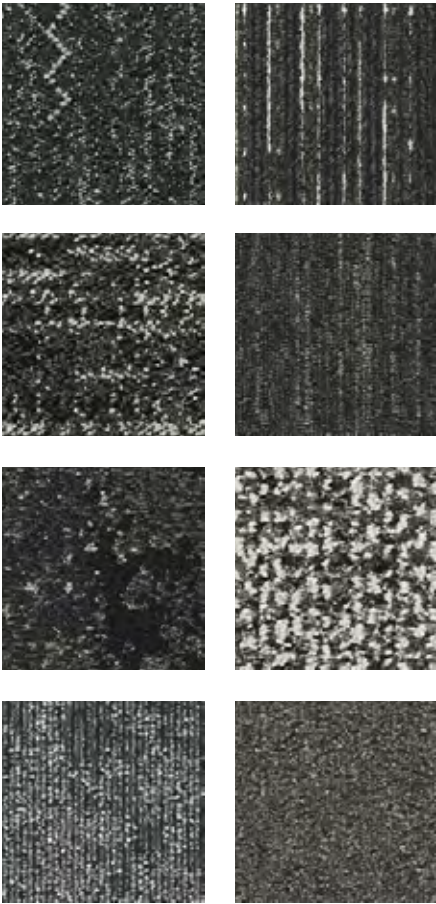
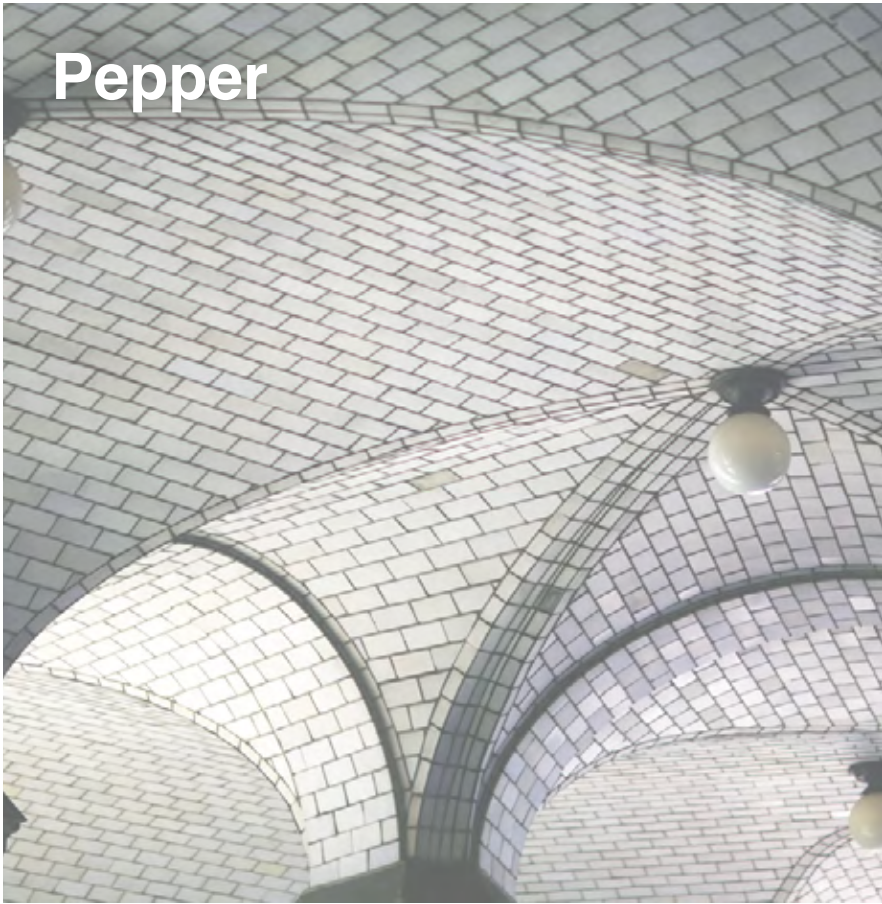
106460 INDIGO

Specifications

Modular, 25cm x 1m	139320AK00
Backing System	GlasBac® Tile
Yarn Manufacturer	Aquafil
Yarn System	100% Recycled Content Nylon
Color System	100% Solution Dyed
Construction	Tufted Pattern Loop
Preservation Protection	Intersept®
Soil/Stain Protection	Protekt ² ®
Pile Thickness	0.104 in., 2.6 mm
Pile Density	8,308
Total Recycled Content	77%
Indoor Air Quality	CRI Green Label Plus #GLP0820







Interface Design Studio

The Interface Design Studio is a fully complimentary service intended to help designers at any phase of a project. With a deep knowledge of Interface products, our team of trained concept designers saves you time by focusing on the foundation of every design project — the floor.

Carbon Neutral Floors™

Reduce your carbon footprint. All Interface flooring is 100% carbon neutral—including carpet tile, LVT and nora® rubber flooring. By choosing Interface and Carbon Neutral Floors™, you can see exactly how much a floor is contributing to the reduction of global warming. No compromising on performance. No compromising the planet.

