

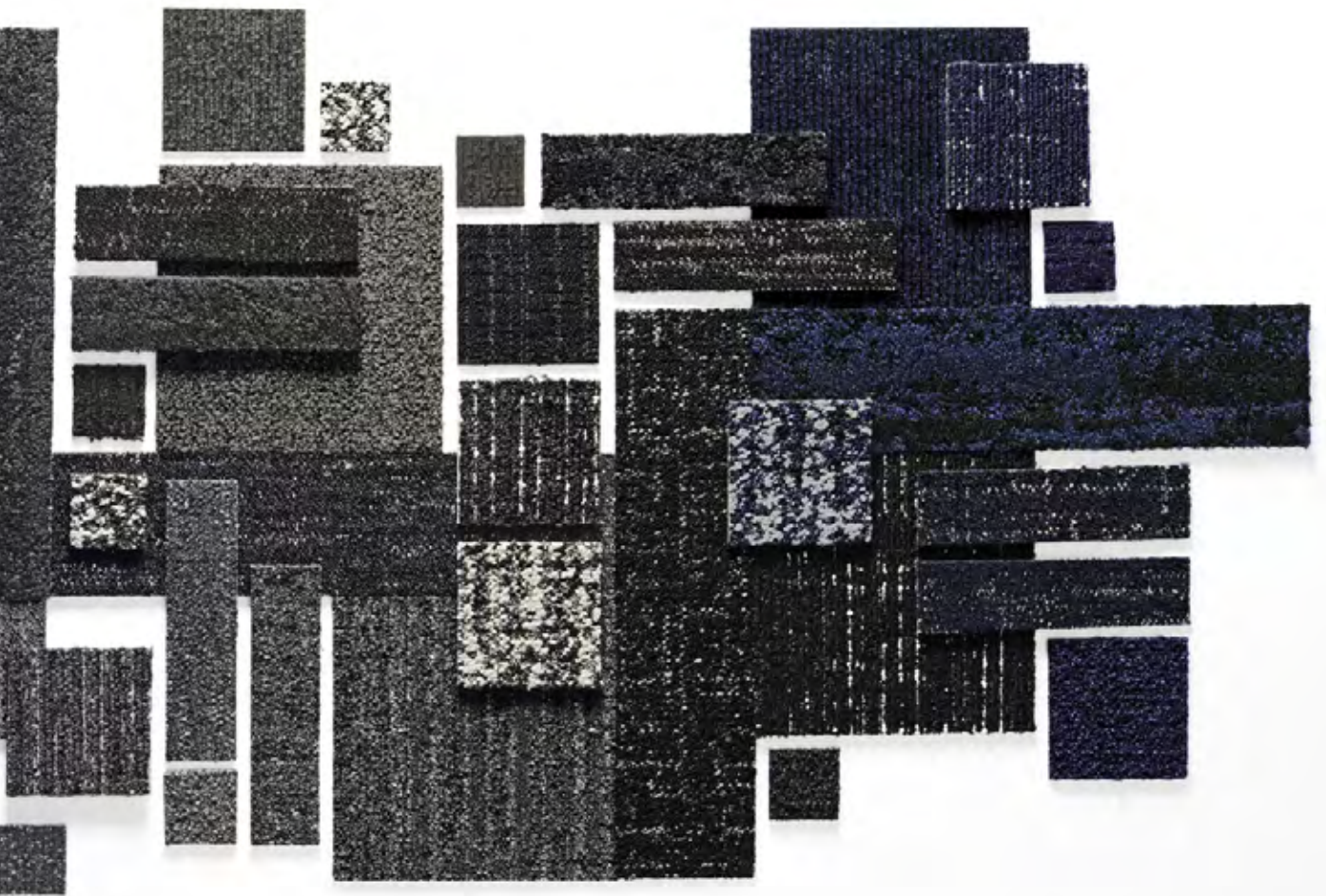


5th Ave Collab

Interface®

# 5<sup>th</sup> Ave Collab





What is the perfect gray?

What is the perfect gray?

It's an answer that evolves with each season. As a true neutral, gray is foundational. Versatile. Timeless. So, there is no "perfect" gray, just perfect for you. Perfect for now.

Inspired by the well-known Manhattan thoroughfare, with its museums, high-end retail and luxury apartments, 5th Ave Collab features elevated palettes of gray that range from cool to warm, plush to flat, linear to organic. No matter your preference, you'll have a refined balance of neutral textures to uplift any space.

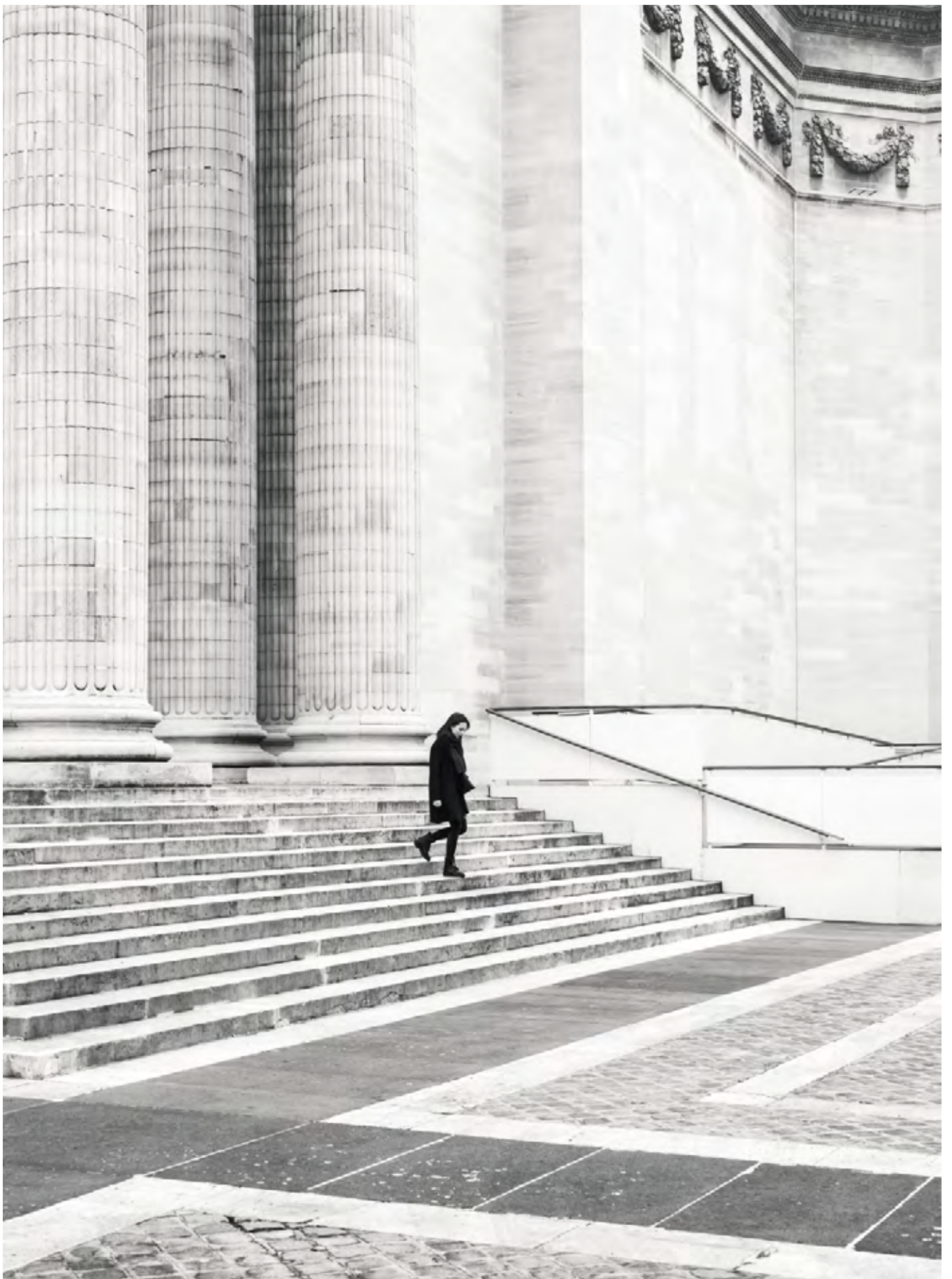
As part of our global product portfolio, each style in 5th Ave Collab is 100% carbon neutral. Impactful on the floor. Impactful on the planet. **Carbon Neutral Floors™**



**PRODUCT NIGHT FLIGHT™ COLOR 106476 BLACK INSTALLED BRICK**  
**PRODUCT HAPTIC™ COLOR 106457 PEPPER INSTALLED ASHLAR**

Natural







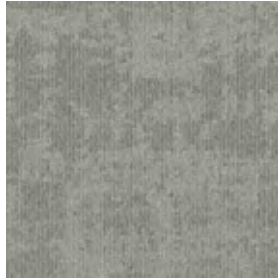


# Cloud Cover™

---



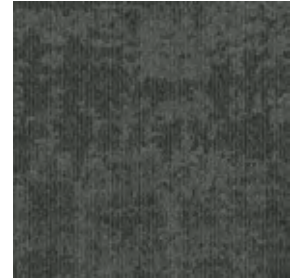
106477 NATURAL



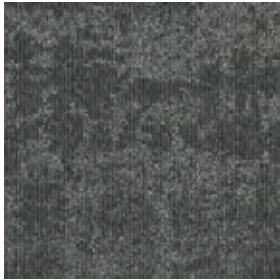
106478 FOG



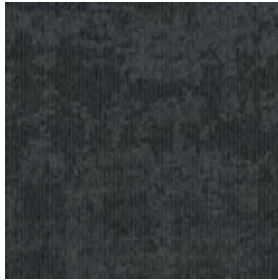
106517 TITANIUM



106480 PEWTER



106481 PEPPER



106482 INK



106483 BLACK



106484 INDIGO

## Specifications

---

Modular, 50cm x 50cm	1378902500
Backing System	GlasBac® Tile
Yarn Manufacturer	Aquafil
Yarn System	100% Recycled Content Nylon
Color System	100% Solution Dyed
Construction	Tufted Cut & Loop
Preservative Protection	Intersept®
Soil/Stain Protection	Protekt <sup>2</sup> ®
Pile Thickness	0.079 in., 2.0 mm
Pile Density	7,747
Total Recycled Content	76%
Indoor Air Quality	CRI Green Label Plus #GLP0820



ASH-LARK



BRICK



QUARTER-TURN



NON-DIRECTIONAL

# Night Flight™

---



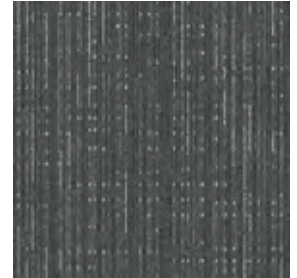
106469 NATURAL



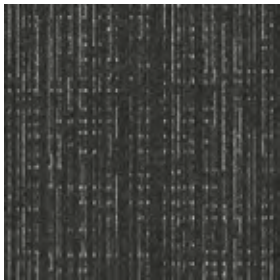
106470 FOG



106471 TITANIUM



106472 PEWTER



106473 PEPPER



106474 INK



106475 BLACK



106476 INDIGO

## Specifications

---

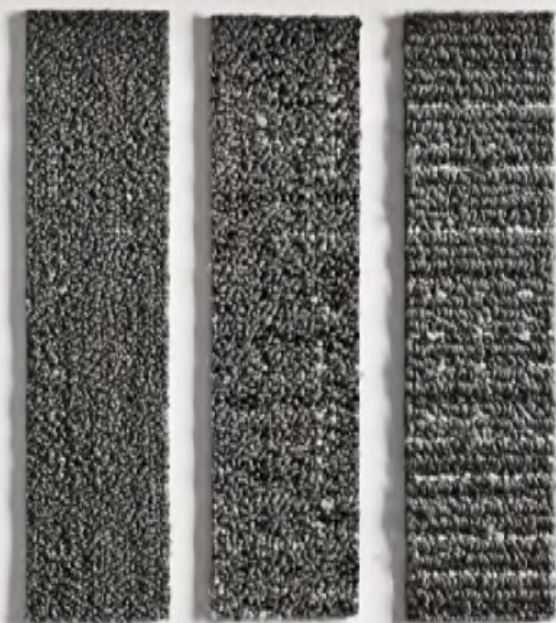
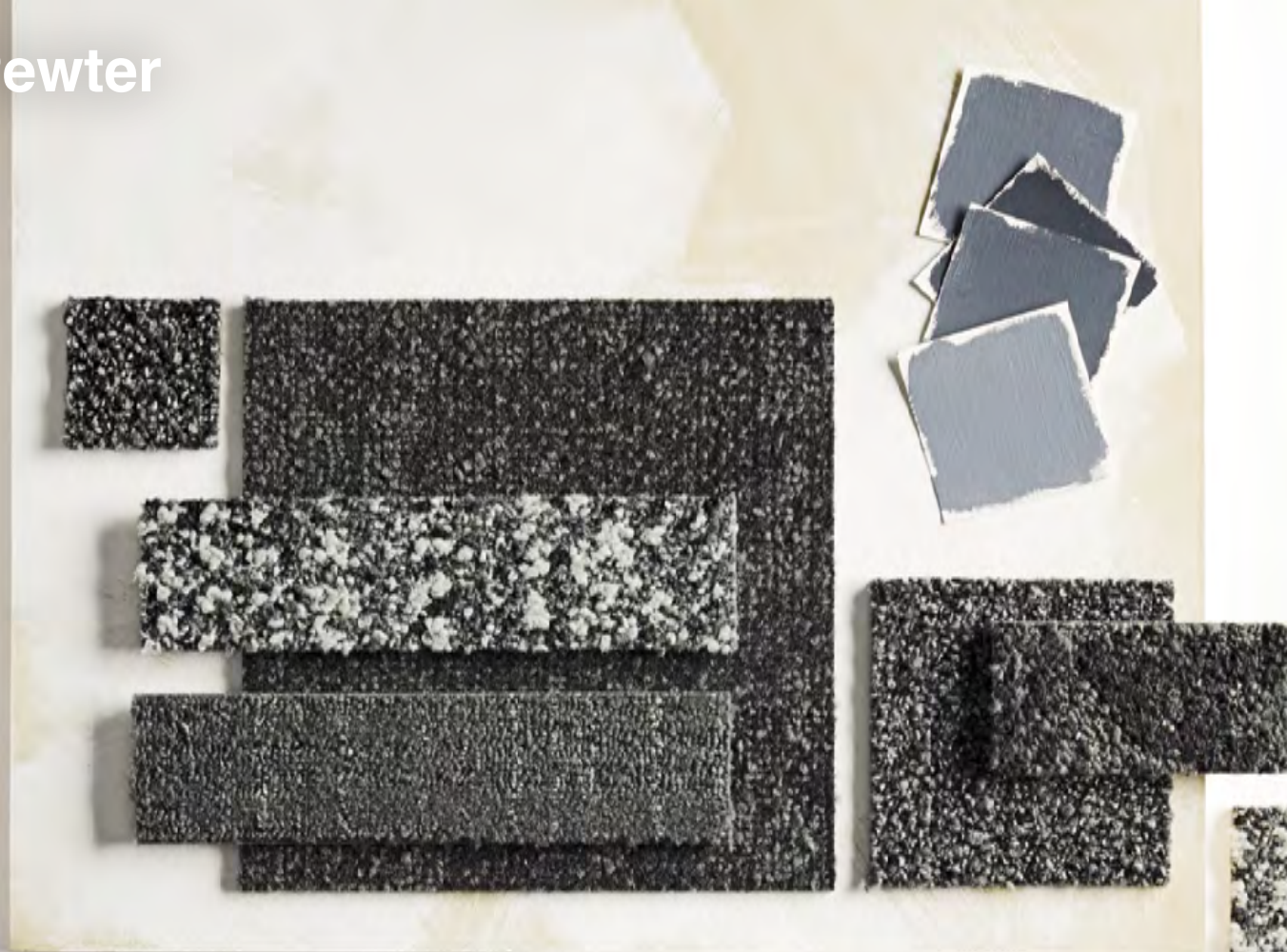
Modular, 50cm x 50cm	1287202500
Backing System	GlasBac® Tile
Yarn Manufacturer	Aquafil
Yarn System	100% Recycled Content Nylon
Color System	100% Solution Dyed
Construction	Tufted Pattern Loop
Preservative Protection	Intersept®
Soil/Stain Protection	Protekt2®
Pile Thickness	0.139 in., 3.5 mm
Pile Density	6,216
Total Recycled Content	77%
Indoor Air Quality	CRI Green Label Plus #GLP0820





**PRODUCT** NIGHT FLIGHT **COLORS** 106469 NATURAL, 106473 PEPPER **INSTALLED** BRICK

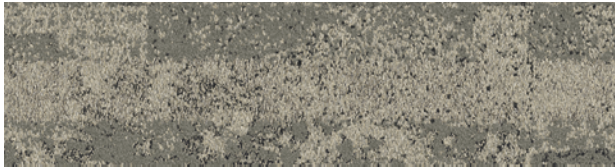
# Pewter





# HN810

---



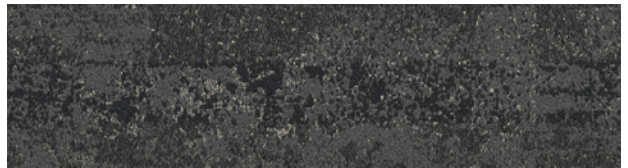
106485 NATURAL



106486 FOG



106487 TITANIUM



106488 PEWTER



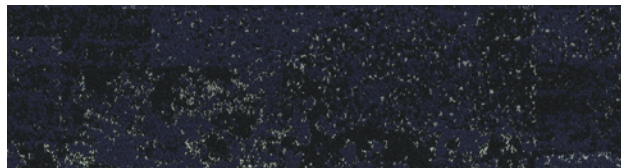
106489 PEPPER



106490 INK



106491 BLACK



106492 INDIGO

## Specifications **i2**

---

Modular, 25 cm x 1 m	127610AK0H
Backing System	GlasBac®RE Tile
Yarn Manufacturer	Aquafil
Yarn System	100% Recycled Content Nylon
Color System	100% Solution Dyed
Construction	Tufted Sheared
Preservative Protection	Intersept®
Soil/Stain Protection	Protekt2®
Pile Thickness	0.212 in., 5.4 mm
Pile Density	5,774
Total Recycled Content	92% (28% Post-Consumer)
Indoor Air Quality	CRI Green Label Plus #GLP0820









# Striation™

---



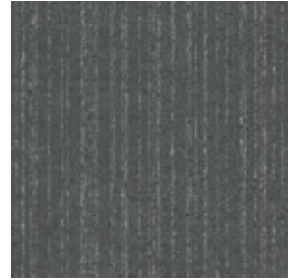
106461 NATURAL



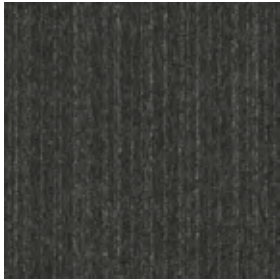
106462 FOG



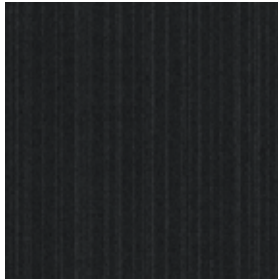
106463 TITANIUM



106464 PEWTER



106465 PEPPER



106466 INK



106467 BLACK



106468 INDIGO

## Specifications

---

Modular, 50cm x 50cm	1392202500
Backing System	GlasBac® Tile
Yarn Manufacturer	Aquafil
Yarn System	100% Recycled Content Nylon
Color System	100% Solution Dyed
Construction	Tufted Sheared
Lifetime Antimicrobial	Intersept®
Pile Thickness	0.102 in., 2.6 mm
Pile Density	7,765
Total Recycled Content	76%
Indoor Air Quality	CRI Green Label Plus #GLP0820



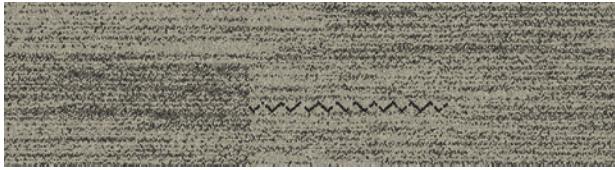
ASH-LAR      QUARTER-TURN      NON DIRECTIONAL

Black

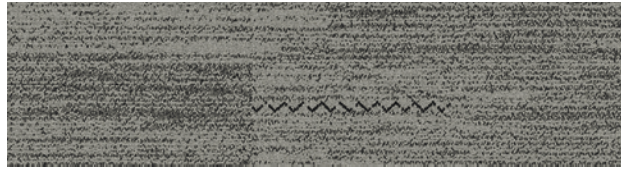




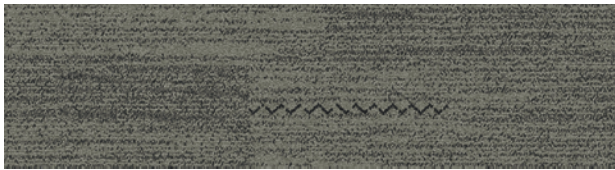
# Darning™



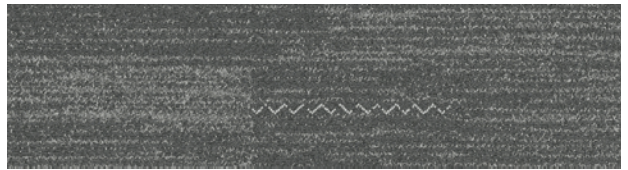
106445 NATURAL



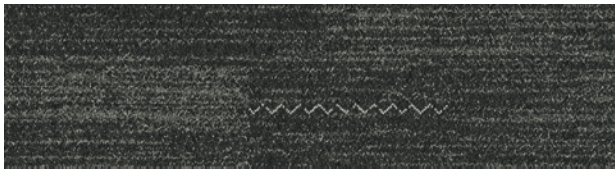
106446 FOG



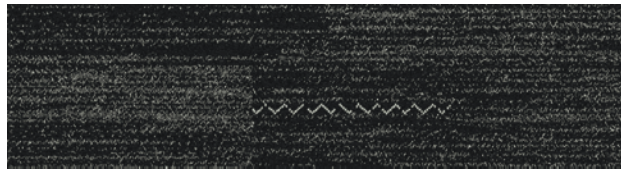
106447 TITANIUM



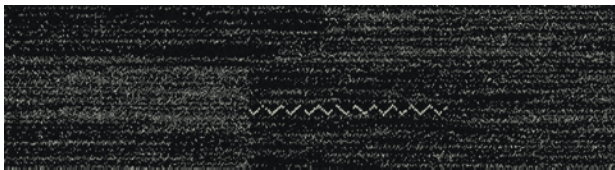
106448 PEWTER



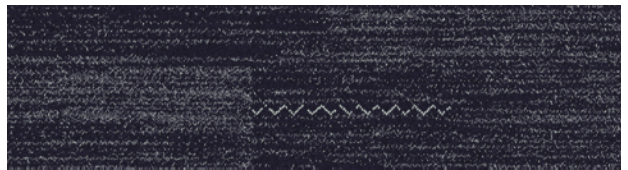
106449 PEPPER



106450 INK



106451 BLACK



106452 INDIGO

## Specifications

Modular, 25cm x 1m	139310AK00
Backing System	GlasBac® Tile
Yarn Manufacturer	Aquafil
Yarn System	100% Recycled Content Nylon
Color System	100% Solution Dyed
Construction	Tufted Pattern Loop
Preservation Protection	Intersept®
Soil/Stain Protection	Protekt <sup>2</sup> ®
Pile Thickness	0.092 in., 2.3 mm
Pile Density	8,609
Total Recycled Content	76%
Indoor Air Quality	CRI Green Label Plus #GLP0820



ASHLAR

HERRINGBONE



PRODUCT DARNING COLOR 106451 BLACK INSTALLED ASHLAR

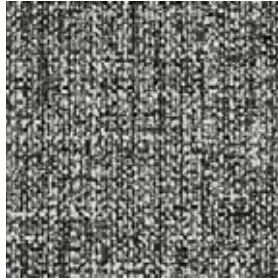


## Tailored Touch™ (FLOR®)

---



104781 NATURAL



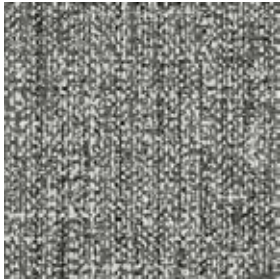
104783 BLACK



188452 FOG\*



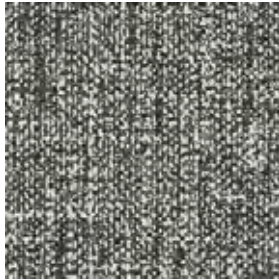
188453 TITANIUM\*



188454 PEWTER\*



188455 PEPPER\*



188456 INK\*



188457 INDIGO\*

## Specifications

---

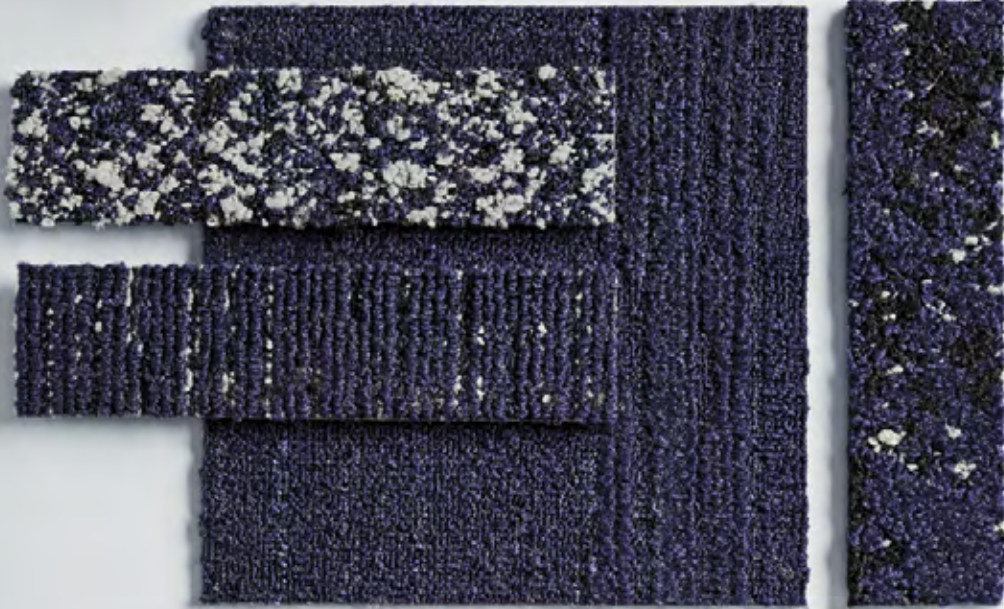
Modular, 50cm x 50cm	1276302500
Backing System	GlasBac® Tile
Yarn Manufacturer	Aquafil
Yarn System	100% Recycled Content Nylon
Color System	100% Solution Dyed
Construction	Loop Pile
Preservation Protection	Intersept®
Soil/Stain Protection	Protekt <sup>2</sup> ®
Pile Thickness	0.127 in., 3.2 mm
Pile Density	8,504
Total Recycled Content	78%
Indoor Air Quality	CRI Green Label Plus #GLP0820



MONOLITHIC

Contact your local sales representative to request samples.  
\*Minimum order required and upcharge does apply.

# Indigo







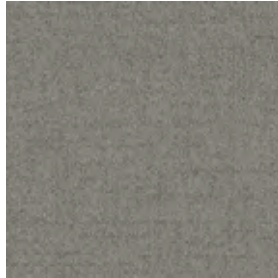


# Menagerie™ II

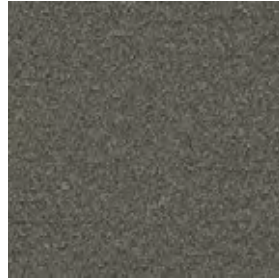
---



101466 SHELL



106442 CLOUD



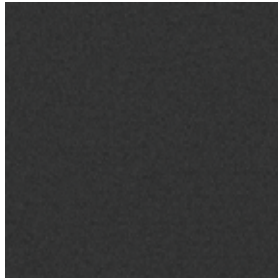
106443 TITANIUM



101469 BOULDER



101468 PEBBLE



101467 CHARCOAL



101473 STORM



106444 INDIGO

## Specifications

---

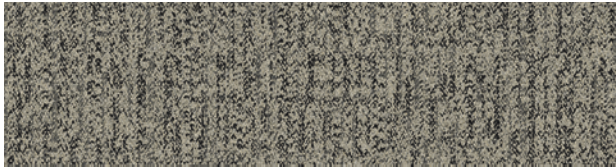
Modular, 50cm x 50cm	1385602500
Backing System	GlasBac® Tile
Yarn Manufacturer	Aquafil
Yarn System	100% Recycled Content Nylon
Color System	100% Solution Dyed
Construction	Tufted Textured Loop
Preservative Protection	Intersept®
Soil/Stain Protection	Protekt2®
Pile Thickness	0.149 in., 3.8 mm
Pile Density	5,799
Total Recycled Content	77%
Indoor Air Quality	CRI Green Label Plus #GLP0820



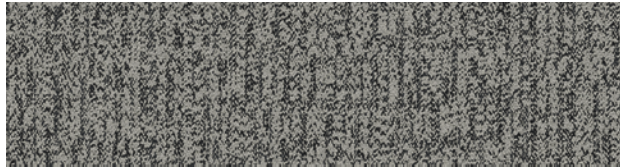
MONOLITHIC

# Haptic™

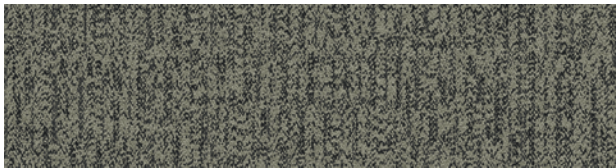
---



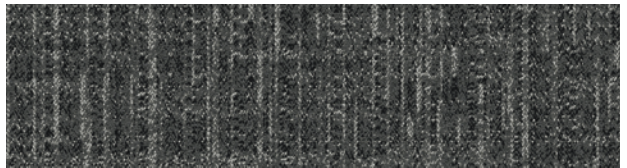
106453 NATURAL



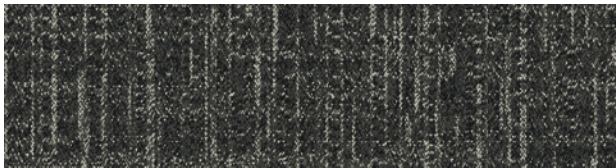
106454 FOG



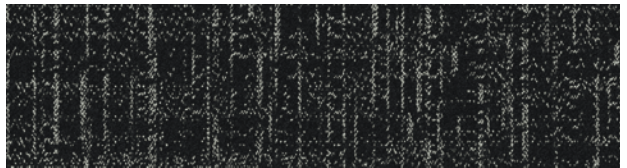
106455 TITANIUM



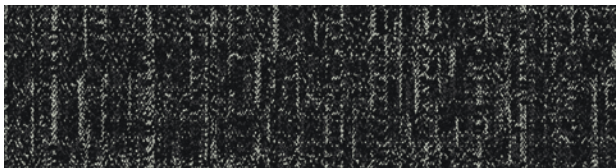
106456 PEWTER



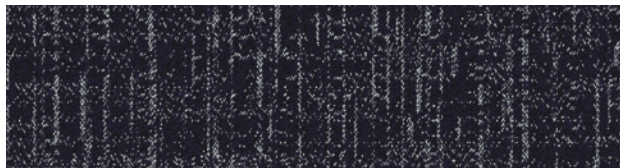
106457 PEPPER



106458 INK



106459 BLACK



106460 INDIGO

## Specifications

---

Modular, 25cm x 1m	139320AK00
Backing System	GlasBac® Tile
Yarn Manufacturer	Aquafil
Yarn System	100% Recycled Content Nylon
Color System	100% Solution Dyed
Construction	Tufted Pattern Loop
Preservation Protection	Intersept®
Soil/Stain Protection	Protekt2®
Pile Thickness	0.104 in., 2.6 mm
Pile Density	8,308
Total Recycled Content	77%
Indoor Air Quality	CRI Green Label Plus #GLP0820

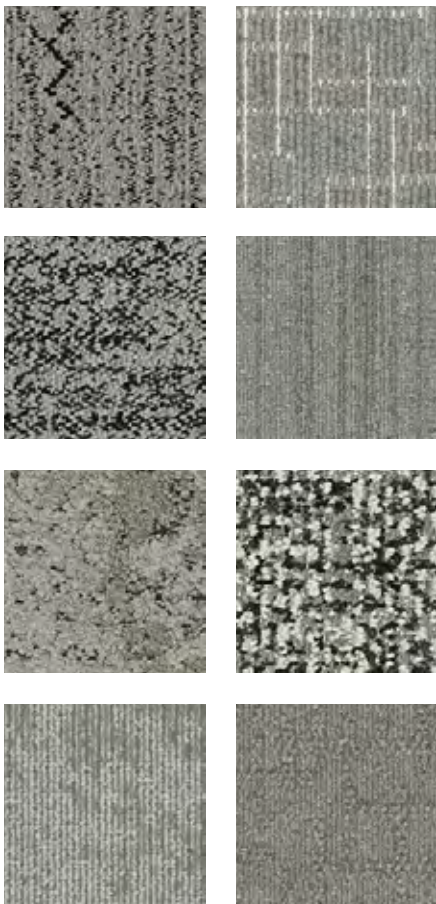
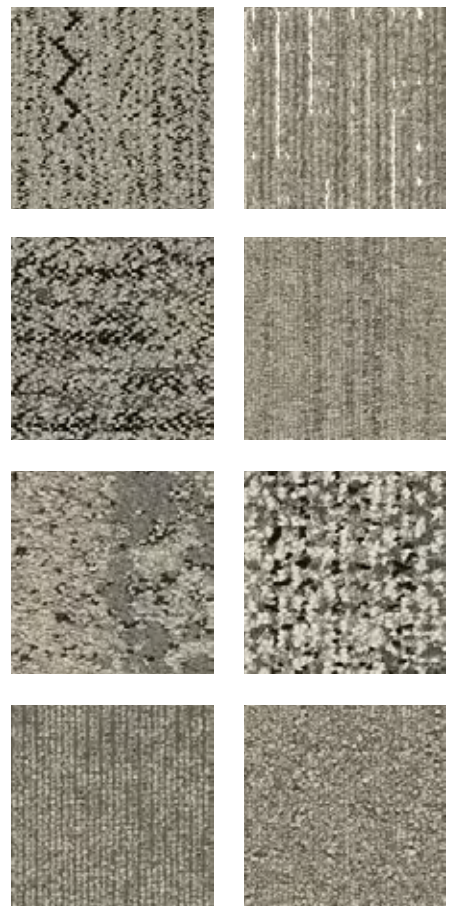
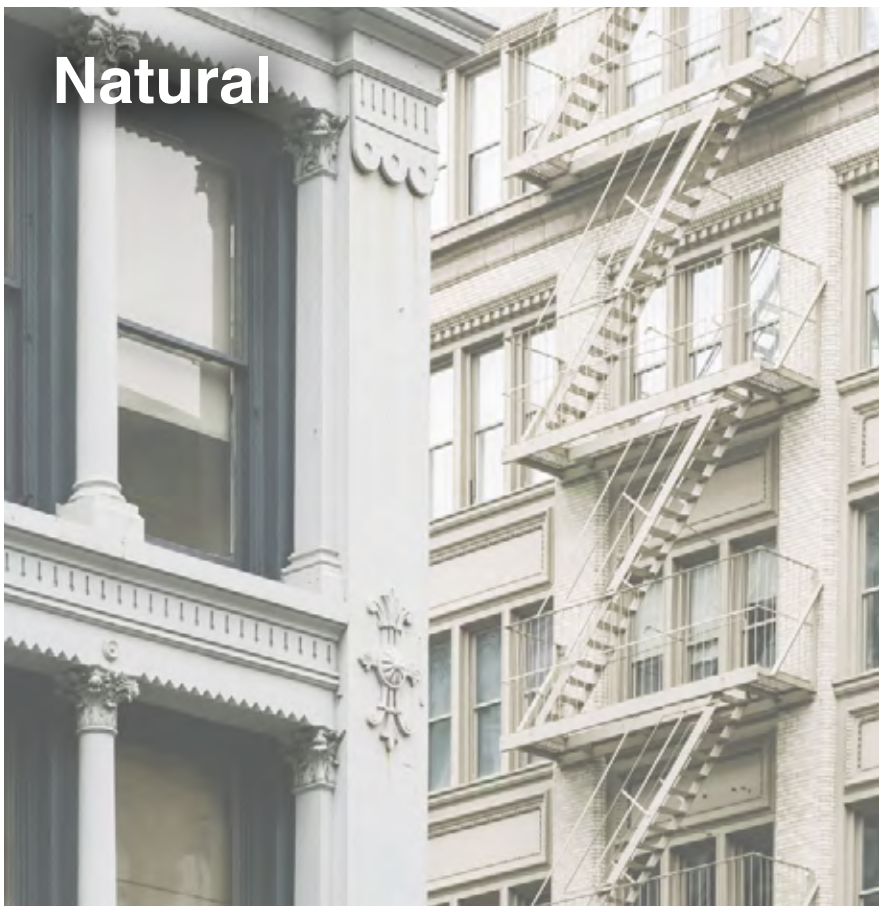


ASHLAR



CARPET PRODUCT HAPTIC COLOR 106460 INDIGO INSTALLED ASHLAR  
LVT PRODUCT LEVEL SET™ | TEXTURED STONES COLOR A00309 MEDIUM CONCRETE INSTALLED MONOLITHIC

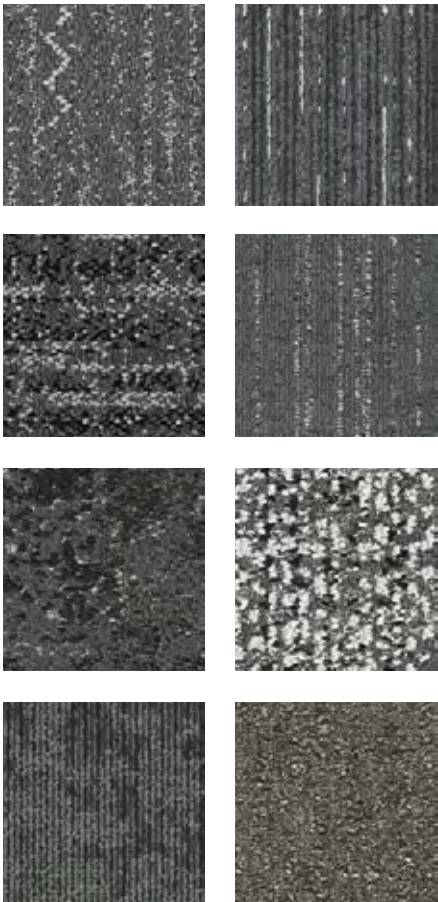
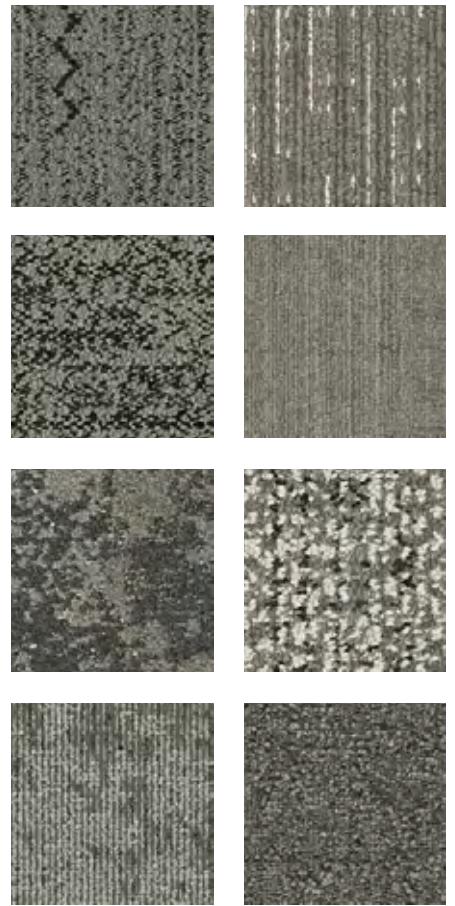
# Natural



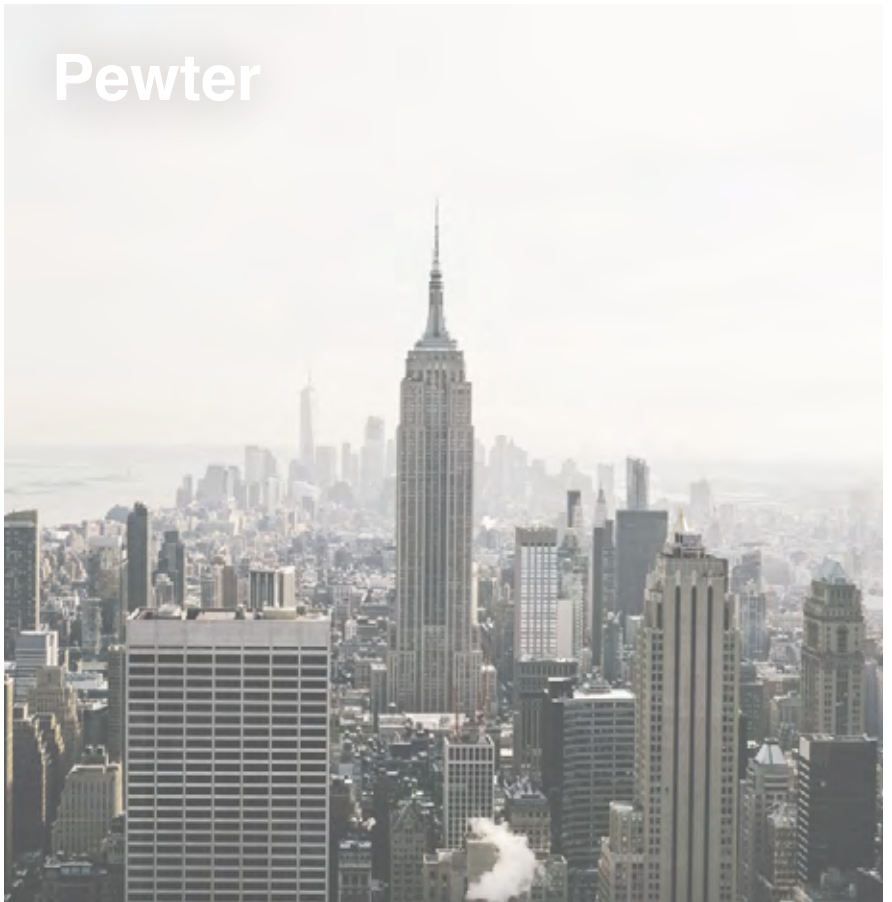
# Fog



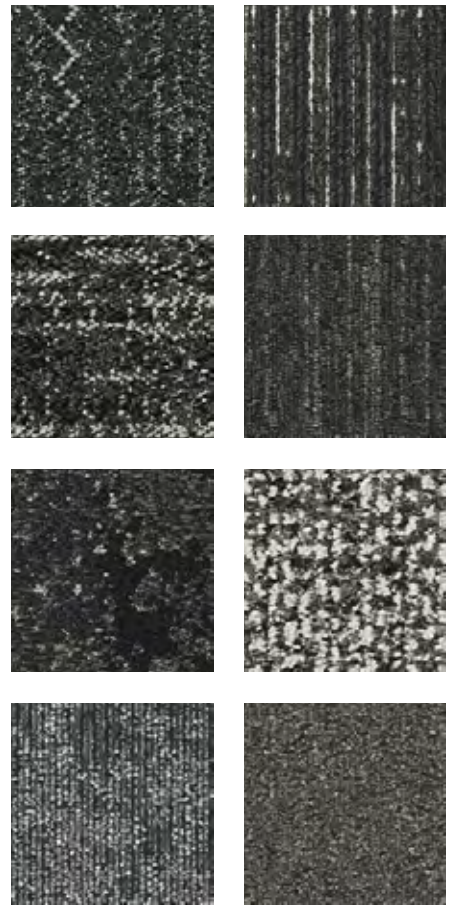
# Titanium



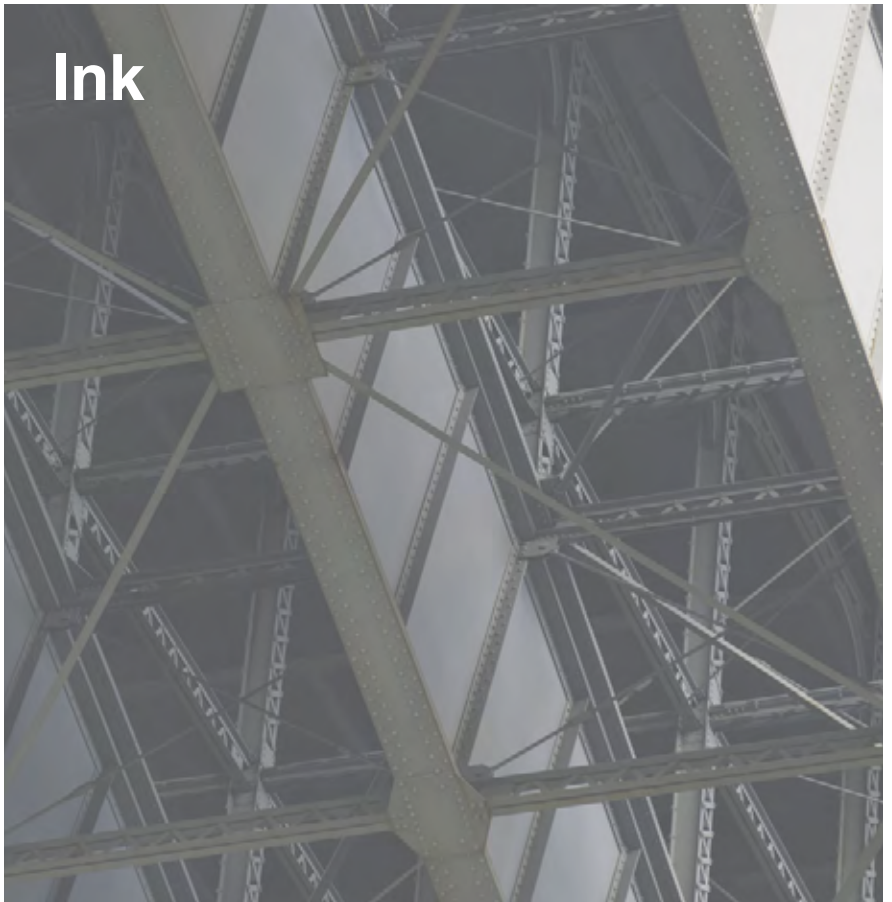
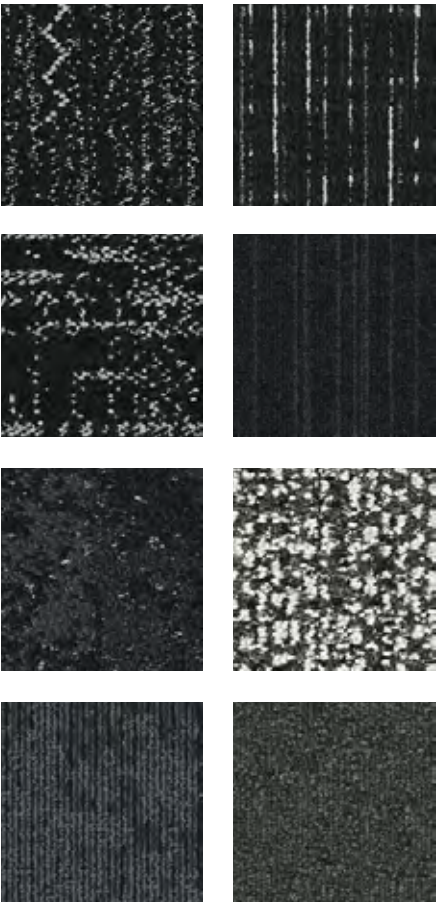
# Pewter



# Pepper

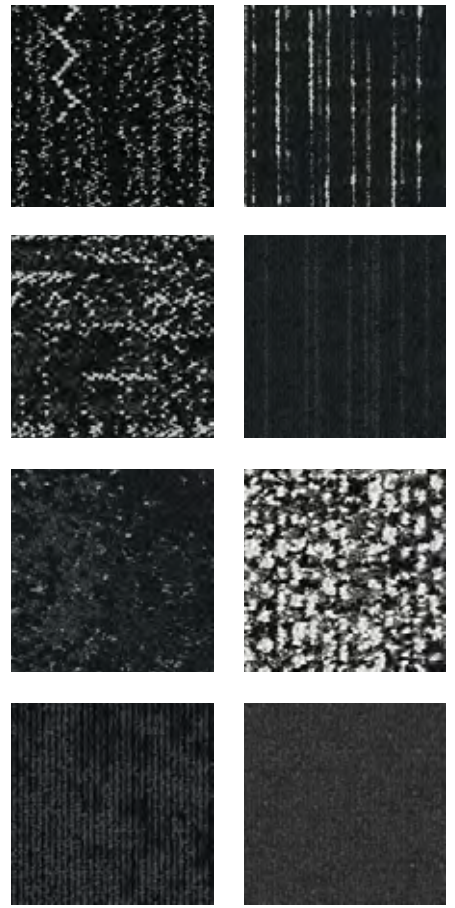


# Ink

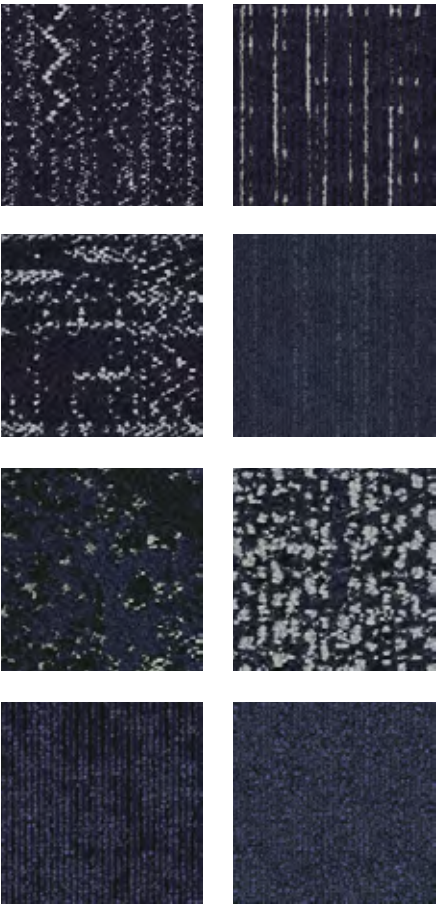




Black



Indigo



# Interface Design Studio

The Interface Design Studio is a fully complimentary service intended to help designers at any phase of a project. With a deep knowledge of Interface products, our team of trained concept designers saves you time by focusing on the foundation of every design project — the floor.

# Carbon Neutral Floors™

Reduce your carbon footprint. All Interface flooring is 100% carbon neutral—including carpet tile, LVT and nora® rubber flooring. By choosing Interface and Carbon Neutral Floors™, you can see exactly how much a floor is contributing to the reduction of global warming. No compromising on performance. No compromising the planet.





**RECYCLED**  
Paper made from  
recycled material  
**FSC® C009723**



PLEASE RECYCLE

Printed on 50% post consumer waste (PCW)  
fiber manufactured using wind power.

We have tried our very best to accurately  
represent product colors. However, due to  
the nature of printed materials, color of actual  
products may vary slightly. Please request a  
sample to see actual product color.

**[www.interface.com](http://www.interface.com)**

**United States Headquarters**

1280 West Peachtree Street NW  
Atlanta, GA 30309  
1.800.634.6032

**Canadian Headquarters**

233 Lahr Drive  
Belleville, ON K8N 5S2  
1.800.267.2149 ext.52128

**Brazilian Headquarters**

Rua Surubim, 577 - Conjuntos  
73/74 7º Andar  
04571-050 - São Paulo - SP  
+ 55 11 2196 0900

**Latin American Headquarters**

Montes Urales # 415 Piso 6  
Col. Lomas de Chapultepec  
México City, D.F. 11000  
Mexico  
+ 52 55 6395 5100

CIM # IFS00841 11/2019



Climate change is undeniable. And  
reversible. Our mission is to prove it.  
**Join the #ClimateTakeBack and  
help create a climate fit for life.**