

Interface Hospitality

MARRIOTT INTERNATIONAL

Approved Prototypes

Aloft Hotels
Courtyard
Delta Hotels
Element
Fairfield Inn & Suite
Four Points
Marriott Hotels
Residence Inn
Sheraton
Towneplace Suites

Why **Interface** Hospitality?

Interface Hospitality is a **Marriott International** approved supplier of carpet and LVT. We are currently approved on the following prototypes:

- Aloft Hotels
- Courtyard
- Delta Hotels
- Element
- Fairfield Inn & Suite
- Four Points
- Marriott Hotels
- Residence Inn
- Sheraton
- Towneplace Suites



1. **6-8 WEEK LEAD TIME** for anything not already in stock.
2. **NO ROLL SIZES OR WIDTHS** to deal with. We come in boxes!
3. What about **UNIT COST?** We can compare the real cost of tile vs. broadloom for each project and show you the true savings.
4. **15 YEAR WARRANTY.** Say no more.
5. **SELECTIVE REPLACEMENT** means little to no disruptions to hotel operations.
6. **INTERSEPT®** antimicrobial protection. Keepin' it clean.
7. **PROTEKT²** stain resistant technology. Keepin' it real clean!
8. Greater **EASE OF HANDLING**, less liability related to mis-cutting of broadloom.
9. Order and installation is a breeze with our **ESTIMATES, SEAMING DIAGRAMS, AND RENDERINGS.**
10. All of our yarns are **100% SOLUTION-DYED NYLON.**
11. **VARIOUS TILE SIZES** make it easier to design/define spaces and sub-spaces
12. Our **CARPET** and **LVT** work together in seamless integration, with no transition strips.
13. We are **SUSTAINABLE:** All of our products are **EPD** verified
14. Interface Hospitality's **RE-ENTRY RECYCLING** program results in our products having up to 80% recycled content, from returned/used carpet.
15. All Interface Hospitality carpet is climate neutral **COOL CARPET**, meaning no greenhouse gases!

Why **Interface® Hospitality**?

1. **Lead Time**

If not in stock, our lead times are 6-8 weeks and all products are manufactured in the USA. FOB Union City, Georgia.

2. **No Roll Sizes or Widths**

There are no widths and roll sizes to deal with, which can often lead to hidden costs and unused material.

3. **Unit Cost**

The unit cost is only part of the evaluation when comparing carpet tile to broadloom for your hotel. Waste is a big consideration with total project cost. We can develop project specific CO's to compare total project cost for your individual property.

4. **15 Year Warranty**

All Interface Hospitality products are hard wearing, provide lasting protection against excessive surface wear, edge ravel, backing separation, shrinking, stretching, permanent soiling and staining.

5. **Selective Replacement**

Whether you're replacing a single Guestroom, a corridor, or an entire hotel, you can do so without disruption. Interface Hospitality's selective replacement enables old flooring to be replaced quickly and efficiently any day of the week your carpet replacement costs can be cut by up to 50%.

6. **Intersept®**

Mold Protection no matter what's spilled on the floor, our proprietary antimicrobial preservative, Intersept®, protects our modular carpet against the growth of odor-causing bacteria guaranteed. With proper maintenance, Intersept treated carpet safely and effectively inhibits the growth of mold and other bacteria so your floors are always fresh. All Interface carpet is standard with Intersept.

7. **Protekt²**

Because stain resist technology - Protekt² - is built into Interface carpet tiles, a topical stain resist treatment is not necessary. The additional polymer is included when nylon is manufactured so it permanently increases stain resistance. We conducted stain tests on our products and compared them to products with a topical treatment. The results? Our uncoated fibers performed just as well as the treated ones. Additionally, the fluorinated chemicals traditionally used in stain resist treatments, when they do wash off, persist in the environment for thousands of years. With Protekt², you get permanent stain resistance, not permanent pollution.

8. **Ease of Handling**

Carpet tile offers greater ease of handling, and installers have less liability related to possible mis-cutting of broadloom.

9. **Installation**

Order and installation is a breeze with our estimates, seaming diagrams and renderings.

10. **100% Solution-dyed Nylon**

Vibrant color that does not fade. All Interface Hospitality carpet tiles are made from durable, stain resistant, 100% solution dyed nylon. Offering superior color fastness and a wide array of colors and textures, solution dyed nylon is less harmful to the environment, using no water or toxic chemicals in the manufacturing process.

11. **Various Sizes**

Using, 50cm, 1m, 25cm x 1m and 50cm x 1m tiles allows for optimal pattern repeats, asymmetrical or symmetrical designs and color use. It also allows design to define spaces / nesting within larger areas.

12. **Integrated System**

Interface modular tiles span a wide selection of designs that offer pattern, color and texture options for a myriad of flooring needs. Tiles come in a variety of shape and size modules that work seamlessly and interchangeably with each other. This compatibility allows for holistic flooring solutions with expansive design flexibility.

13. **Sustainable Choice**

Environmental Responsibility. Interface Hospitality was the industry's first to earn an EPD (Environmental Product Declaration), which evaluates consistent factors based on full lifecycle assessment (LCA). We now have published EPDs for 99% of our products globally. In addition, all of our products with GlasBac®, and GlasBacRE backings meet NSF/ANSI 140 Sustainable Carpet Assessment Standard (SCAS) for carpet.

14. **Carpet Recycling Program: ReEntry®**

Recyclable is Now a Reality. Through our ReEntry program and partnerships with our fiber suppliers and recycling centers throughout North America, separated Type 6 and 6,6 nylon are recycled into new 6 and 6,6 nylon, while separated GlasBac® and similar competitor backings are recycled into GlasBac®RE non-virgin PVC backing using our Cool Blue™ technology. The result? Products with up to 80% total recycled content, including as much as 35% post-consumer content.

15. **Cool Carpet™**

Our third party verified carbon offset program zeroes out all greenhouse gas (GHG) emissions associated with the entire lifecycle of your carpet. An independent testing program that identifies carpet and adhesives with very low emissions of VOCs to help improve indoor air quality.

16. **Dimensional Stability**

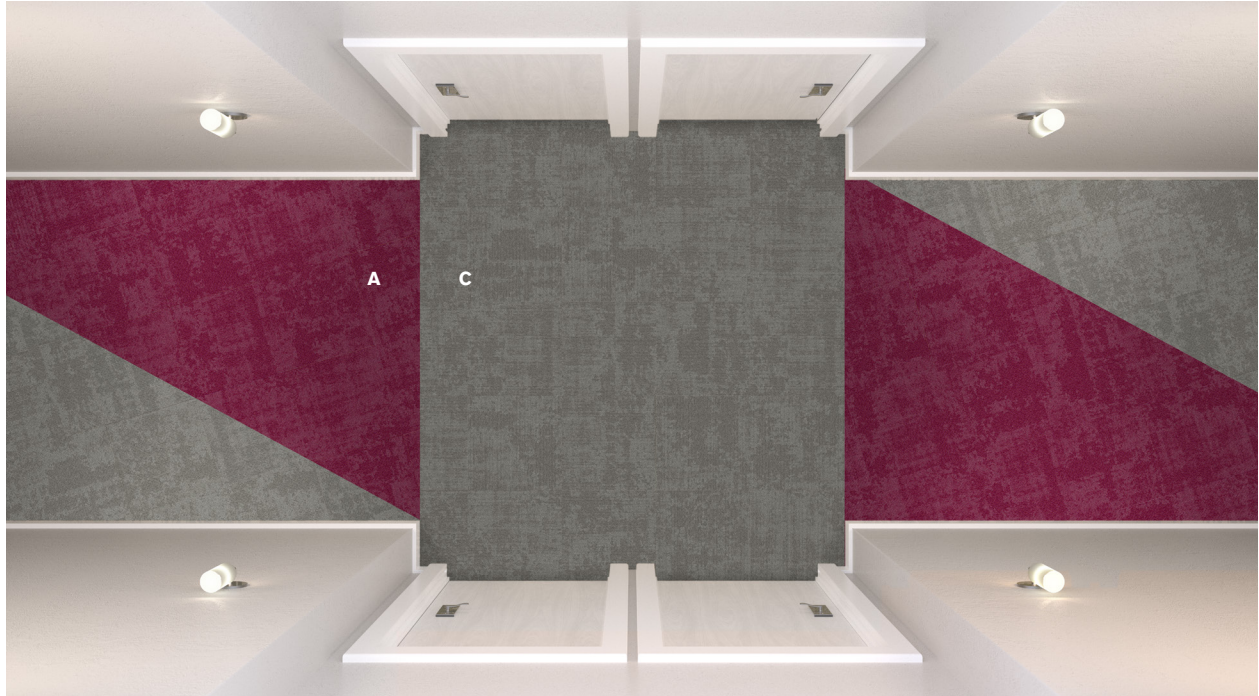
Interface GlasBac® backing has been tested and proven in the marketplace for over 30 years. Engineered to provide superior dimensional stability, GlasBac® modular carpet tiles will not stretch or shrink when exposed to heat or cold, heavy foot or rolling traffic.

17. **Sound Absorption**

Quiet space is essential when people need to focus and concentrate. Sound absorption is therefore critical when colleagues need to collaborate without becoming a distraction to their neighbors. Interface Hospitality carpets provide high sound absorption and insulation.

Whole Eclectic Corridor Prototype Order Information

CONTACT: Sofia Davila sofia.davila@interface.com | 347.633.0577 or your local Account Executive



Corridor Products	Marriott Spec. #	Sample #	Color #	Size	Installation
Cloud Cover A	298779	267549-038	188417	50cm x 50cm	Non Directional
Cloud Cover C	298781	267549-052	188419	50cm x 50cm	Non Directional

Installation Specifications	Marriott Spec.#	Description
2000 Plus		Adhesive
Pad / Underlayment	NOT REQUIRED	

* Floors 1 and 3 receive the blue color and 2 and 4 receive the magenta color.

CORRIDOR INSTALLATION PLAN

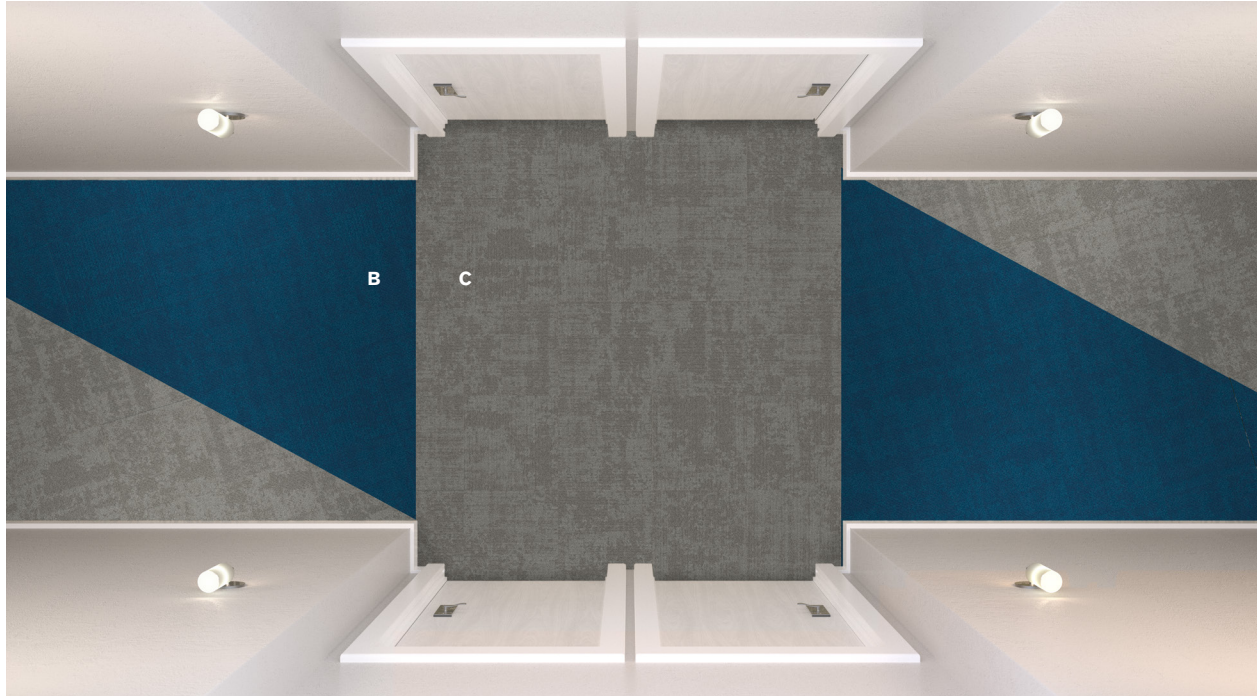
Interface Hospitality

All quantities are estimates only and are based on plans provided. Site measurements and field verifications are recommended to ensure accuracy. These quantities are not intended to be used for material ordering purposes. Since waste factors may vary by installer, actual ordering quantities are the responsibility of your flooring contractor



Whole Eclectic Corridor Prototype Order Information

CONTACT: Sofia Davila sofia.davila@interface.com | 347.633.0577 or your local Account Executive



Corridor Products	Marriott Spec. #	Sample #	Color #	Size	Installation
Cloud Cover B	298780	267549-040	188418	50cm x 50cm	Non Directional
Cloud Cover C	298781	267549-052	188419	50cm x 50cm	Non Directional

Installation Specifications	Marriott Spec.#	Description
2000 Plus		Adhesive
Pad / Underlayment	NOT REQUIRED	

* Floors 1 and 3 receive the blue color and 2 and 4 receive the magenta color.

CORRIDOR INSTALLATION PLAN

Interface Hospitality

All quantities are estimates only and are based on plans provided. Site measurements and field verifications are recommended to ensure accuracy. These quantities are not intended to be used for material ordering purposes. Since waste factors may vary by installer, actual ordering quantities are the responsibility of your flooring contractor



Eclectic Guestroom & Generica America Rug Prototype Order Information

CONTACT: Sofia Davila sofia.davila@interface.com | 347.633.0577 or your local Account Executive



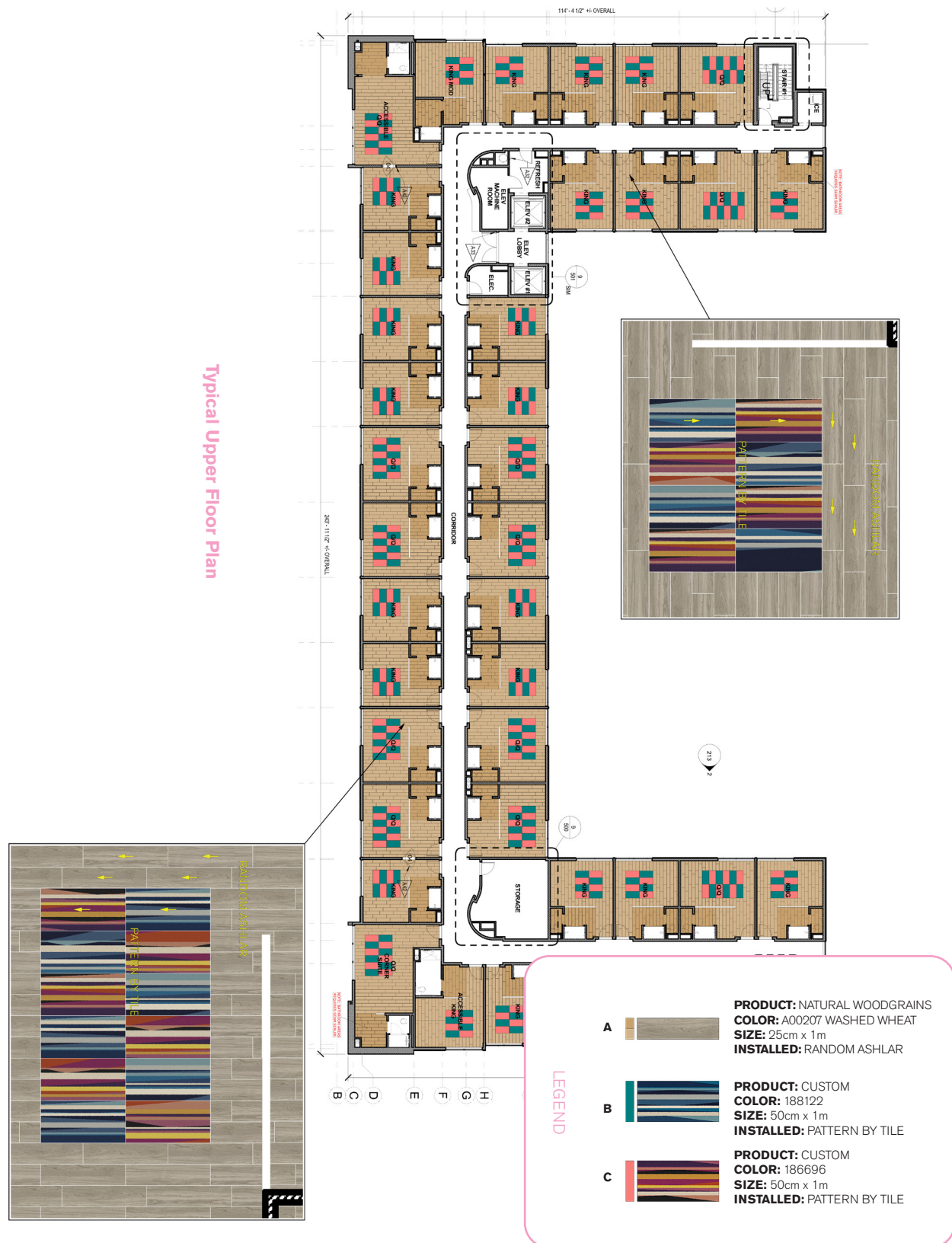
Guestroom Products	Marriott Spec. #	Kit #	Color #	Size	Installation
LVT Natural Woodgrains	276813		A00207 Washed Wheat	25cm x 1m	Random Ashlar
Area Rug Kit	299179	98-1110-25	188122 & 186696	3m x 2m Queen Room	Pattern By Tile
Area Rug Kit	299177	98-1110-24	188122 & 186696	2m x 2m King Room	Pattern By Tile
Installation Specifications	Marriott Spec.#	Description			
XL2000 PLUS Adhesive		Double stick install			
Selitbloc LVT Underlayment	276822	Underlayment for entire room with carpet and LVT system			

*Pad not required with carpet tile but acoustical underlayment is required with the LVT and carpet tile system

GUESTROOM INSTALLATION PLAN

Interface Hospitality

All quantities are estimates only and are based on plans provided. Site measurements and field verifications are recommended to ensure accuracy. These quantities are not intended to be used for material ordering purposes. Since waste factors may vary by installer, actual ordering quantities are the responsibility of your flooring contractor



Eclectic Guestroom & Big Green Rug Prototype Order Information

CONTACT: Sofia Davila sofia.davila@interface.com | 347.633.0577 or your local Account Executive



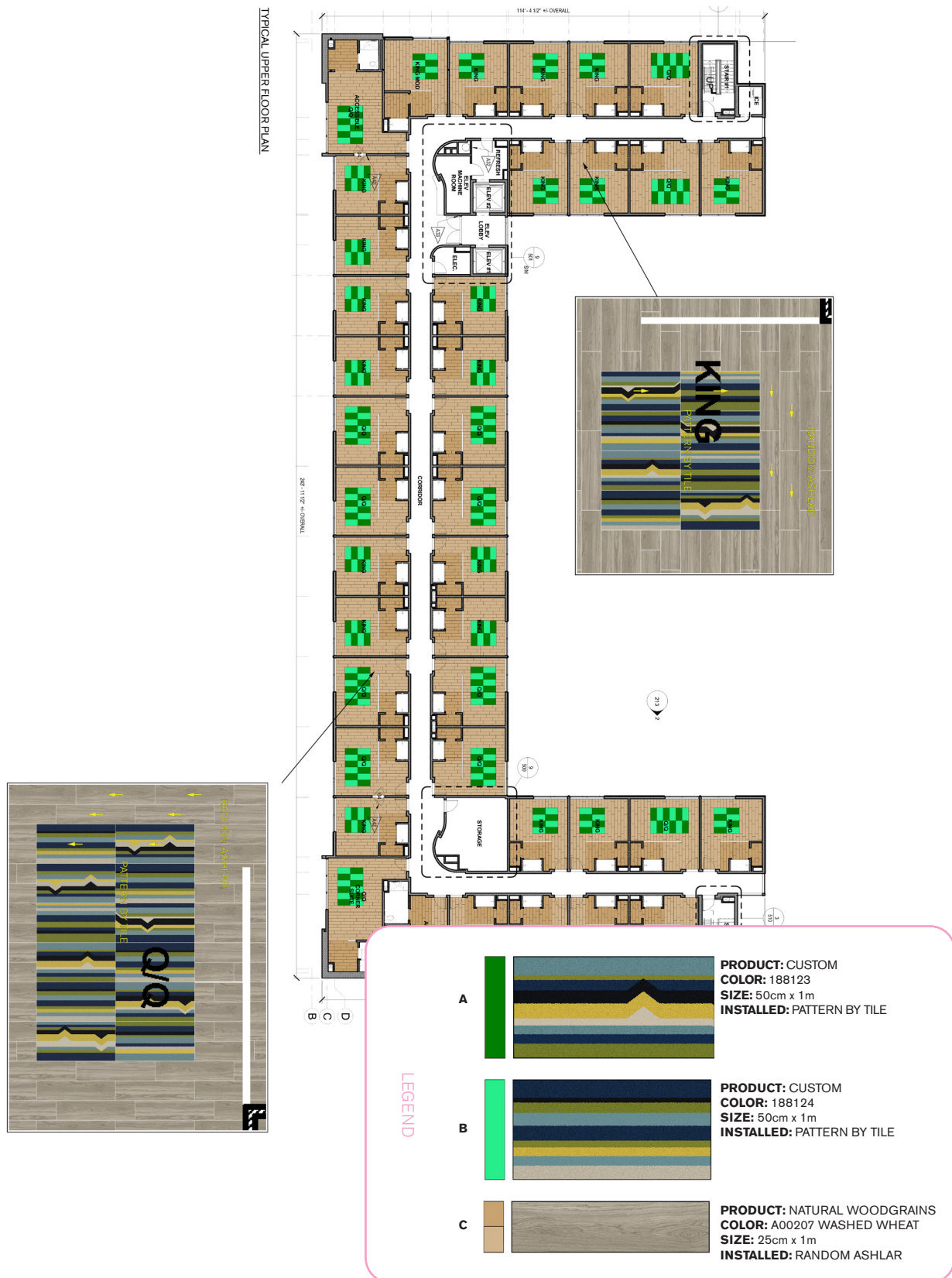
Guestroom Products	Marriott Spec. #	Kit #	Color #	Size	Installation
LVT Natural Woodgrains	276813		A00207 Washed Wheat	25cm x 1m	Random Ashlar
Area Rug Kit	299140	98-1110-23	188123 & 188124	3m x 2m Queen Room	Pattern By Tile
Area Rug Kit	299142	98-1110-22	188123 & 188124	2m x 2m King Room	Pattern By Tile
Installation Specifications	Marriott Spec.#	Description			
XL2000 PLUS Adhesive		Double stick install			
Selitbloc LVT Underlayment	276822	Underlayment for entire room with carpet and LVT system			

*Pad not required with carpet tile but acoustical underlayment is required with the LVT and carpet tile system

GUESTROOM INSTALLATION PLAN

Interface Hospitality

All quantities are estimates only and are based on plans provided. Site measurements and field verifications are recommended to ensure accuracy. These quantities are not intended to be used for material ordering purposes. Since waste factors may vary by installer, actual ordering quantities are the responsibility of your flooring contractor



Eclectic Guestroom & Electric Grid Rug Prototype Order Information

CONTACT: Sofia Davila sofia.davila@interface.com | 347.633.0577 or your local Account Executive



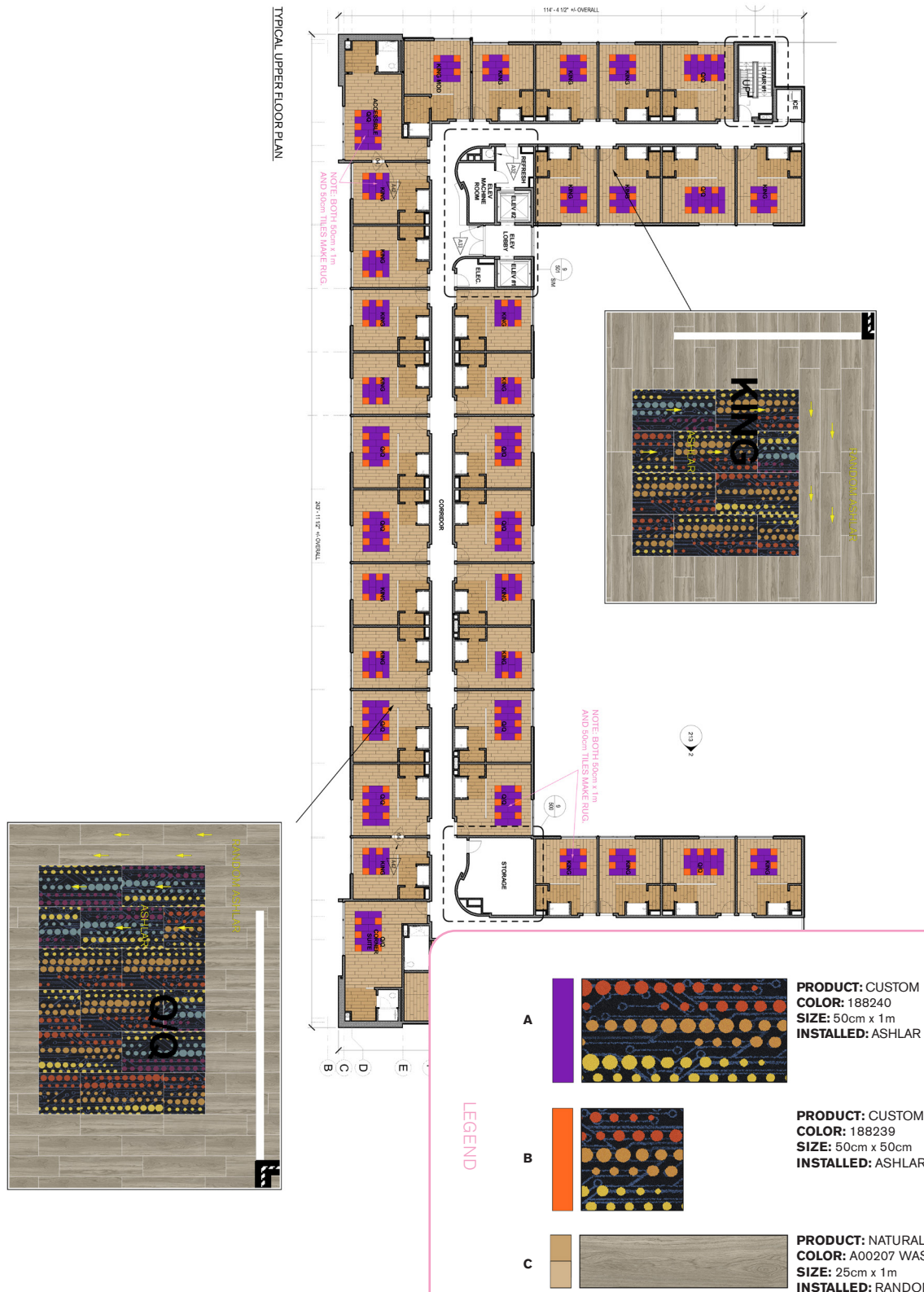
Guestroom Products	Marriott Spec. #	Kit #	Color #	Size	Installation
LVT Natural Woodgrains	276813		A00207 Washed Wheat	25cm x 1m	Random Ashlar
Area Rug Kit	300331	98.1110.33	188239 & 188240	3m x 2m Queen Room	Pattern By Tile
Area Rug Kit	300335	98.1110.32	188240 & 188239	2m x 2m King Room	Pattern By Tile
Installation Specifications	Marriott Spec.#	Description			
XL2000 PLUS Adhesive		Double stick install			
Selitbloc LVT Underlayment	276822	Underlayment for entire room with carpet and LVT system			

*Pad not required with carpet tile but acoustical underlayment is required with the LVT and carpet tile system

GUESTROOM INSTALLATION PLAN

Interface Hospitality

All quantities are estimates only and are based on plans provided. Site measurements and field verifications are recommended to ensure accuracy. These quantities are not intended to be used for material ordering purposes. Since waste factors may vary by installer, actual ordering quantities are the responsibility of your flooring contractor



Eclectic Guestroom & Electric Grid Rug Prototype Order Information

CONTACT: Sofia Davila sofia.davila@interface.com | 347.633.0577 or your local Account Executive



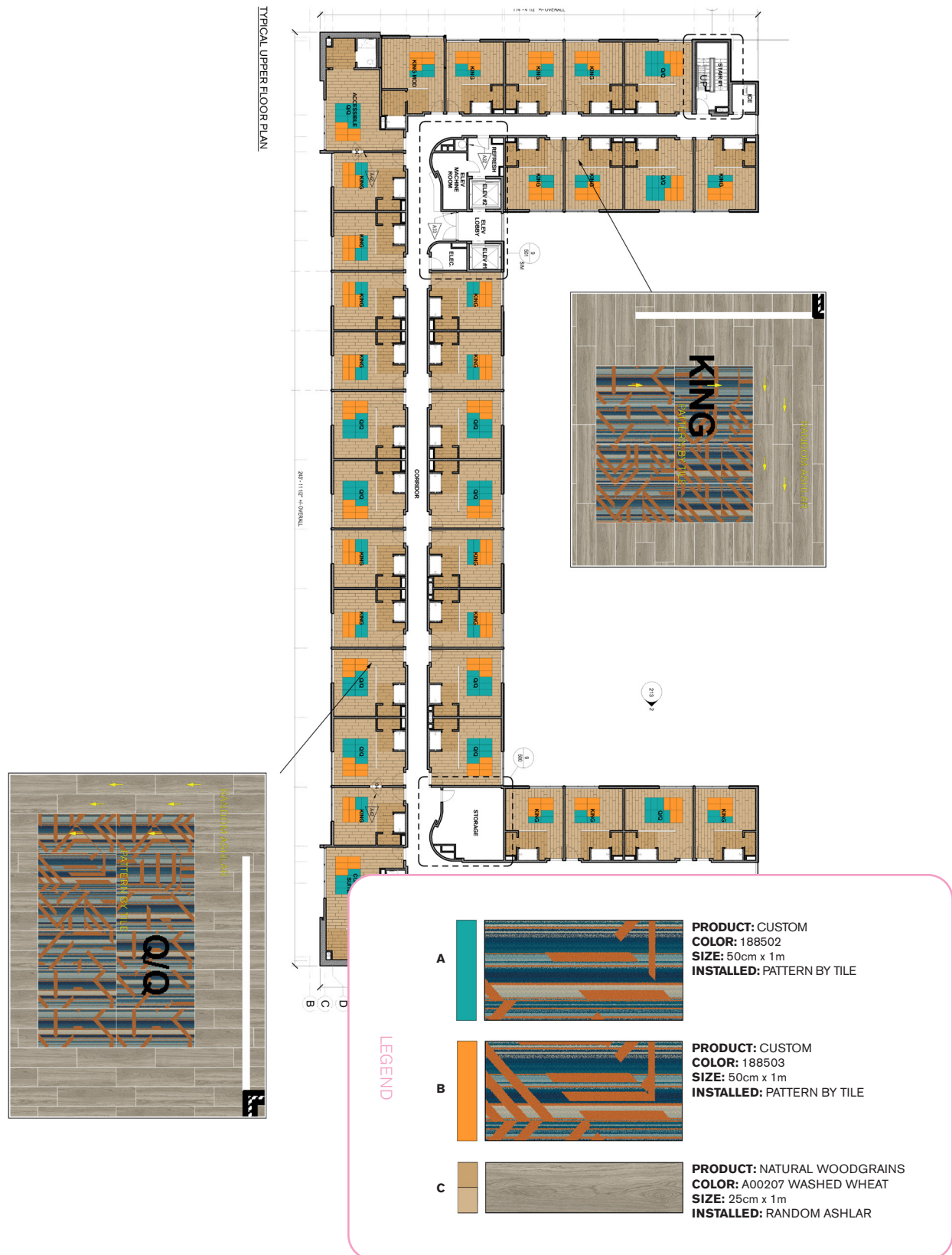
Guestroom Products	Marriott Spec. #	Kit #	Color #	Size	Installation
Area Rug Kit	304063	98.1110.36	188502 & 188503	2m x 3m	Ashlar
Area Rug Kit	304065	98.1110.37	to come	2m x 2m	Ashlar
LVT Natural Woodgrains	276813		A00207 Washed Wheat	25cm x 1m	Random Ashlar
Installation Specifications	Marriott Spec.#	Description			
XL2000 PLUS Adhesive		Double stick install			
Seltribloc LVT Underlayment	276822	Underlayment for entire room with carpet and LVT system			

*Pad not required with carpet tile but acoustical underlayment is required with the LVT and carpet tile system

GUESTROOM INSTALLATION PLAN

Interface Hospitality

All quantities are estimates only and are based on plans provided. Site measurements and field verifications are recommended to ensure accuracy. These quantities are not intended to be used for material ordering purposes. Since waste factors may vary by installer, actual ordering quantities are the responsibility of your flooring contractor



Back Of House Prototype Order Information

CONTACT: Sofia Davila sofia.davila@interface.com | 347.633.0577 or your local Account Executive

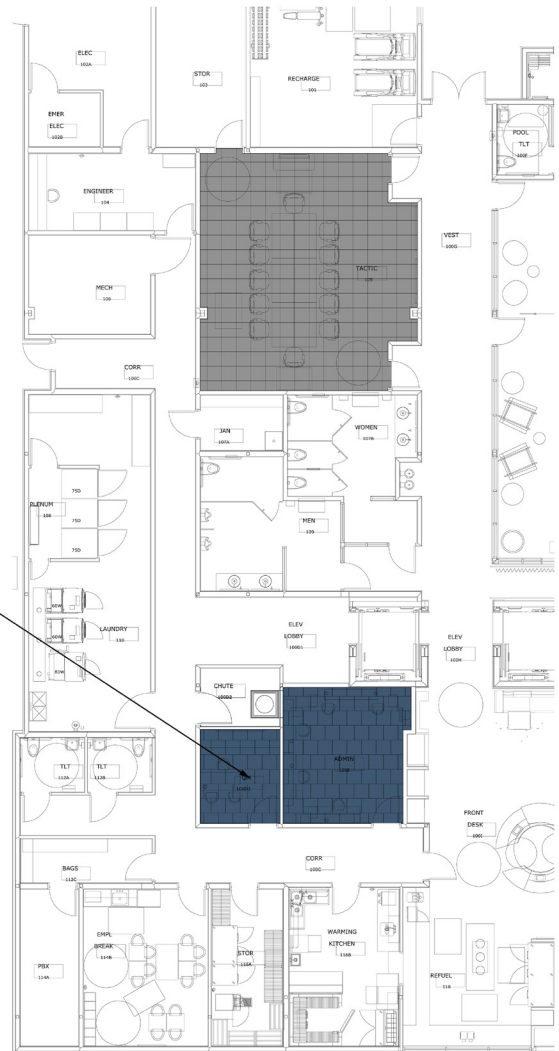
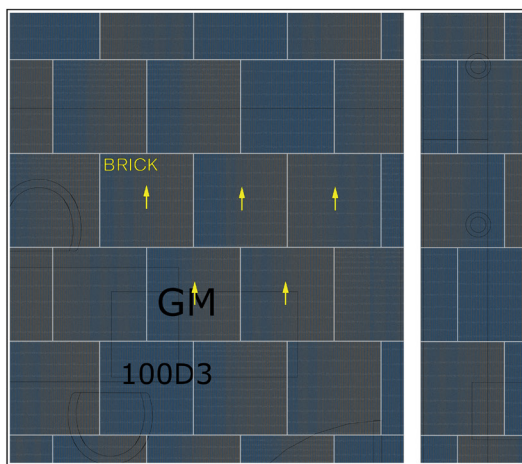


Back Of House Product	Marriott Spec. #	Sample #	Color #	Size	Installation
RMS 303 A	278898	255873-047	179710	50cm x 50cm	Brick
Installation Specifications		Marriott Spec.#	Description		
TacTiles for Installation (500 TacTiles/Roll)		250475	60sq yds/ Roll Adhesive		
Pad / Underlayment		NOT REQUIRED			

BACK OF HOUSE INSTALLATION PLAN

Interface Hospitality

All quantities are estimates only and are based on plans provided. Site measurements and field verifications are recommended to ensure accuracy. These quantities are not intended to be used for material ordering purposes. Since waste factors may vary by installer, actual ordering quantities are the responsibility of your flooring contractor



LEGEND

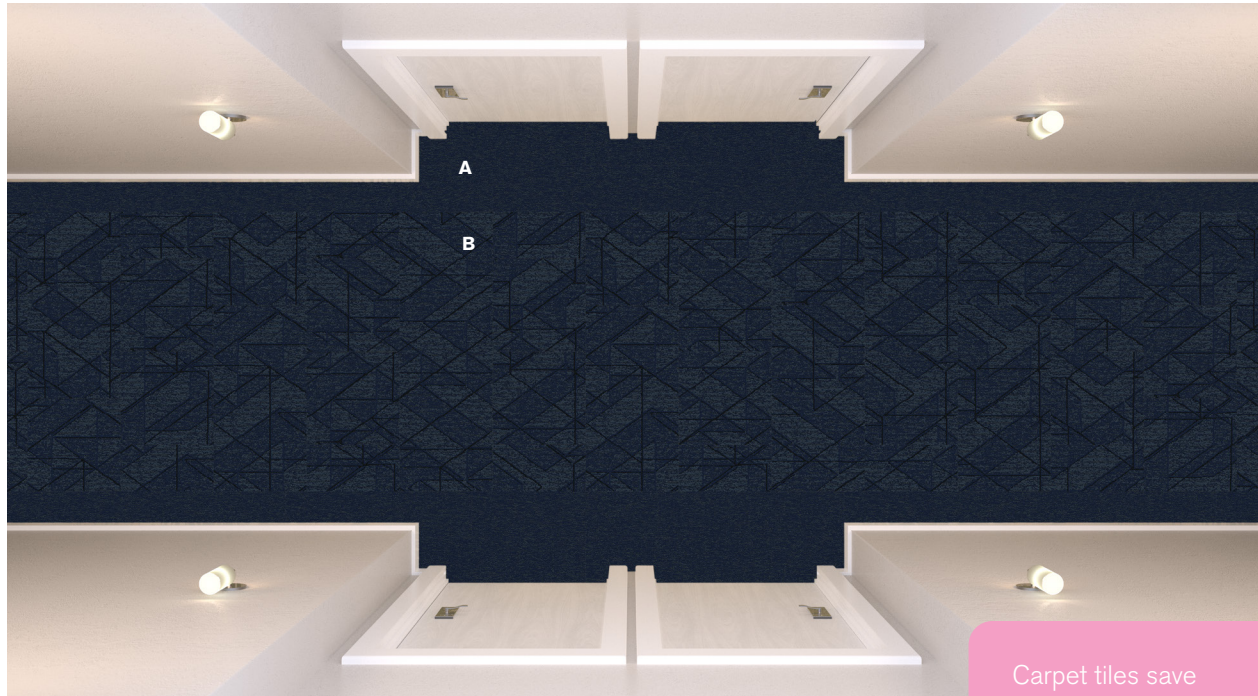
A



PRODUCT: RMS303
COLOR: 179710
SIZE: 50cm
INSTALLED: BRICK

Inspired Classic Corridor Prototype Order Information

CONTACT: Sofia Davila sofia.davila@interface.com | 347.633.0577 or your local Account Executive



Carpet tiles save approximately 15-20% in product waste verses broadloom, based on prototype layout.

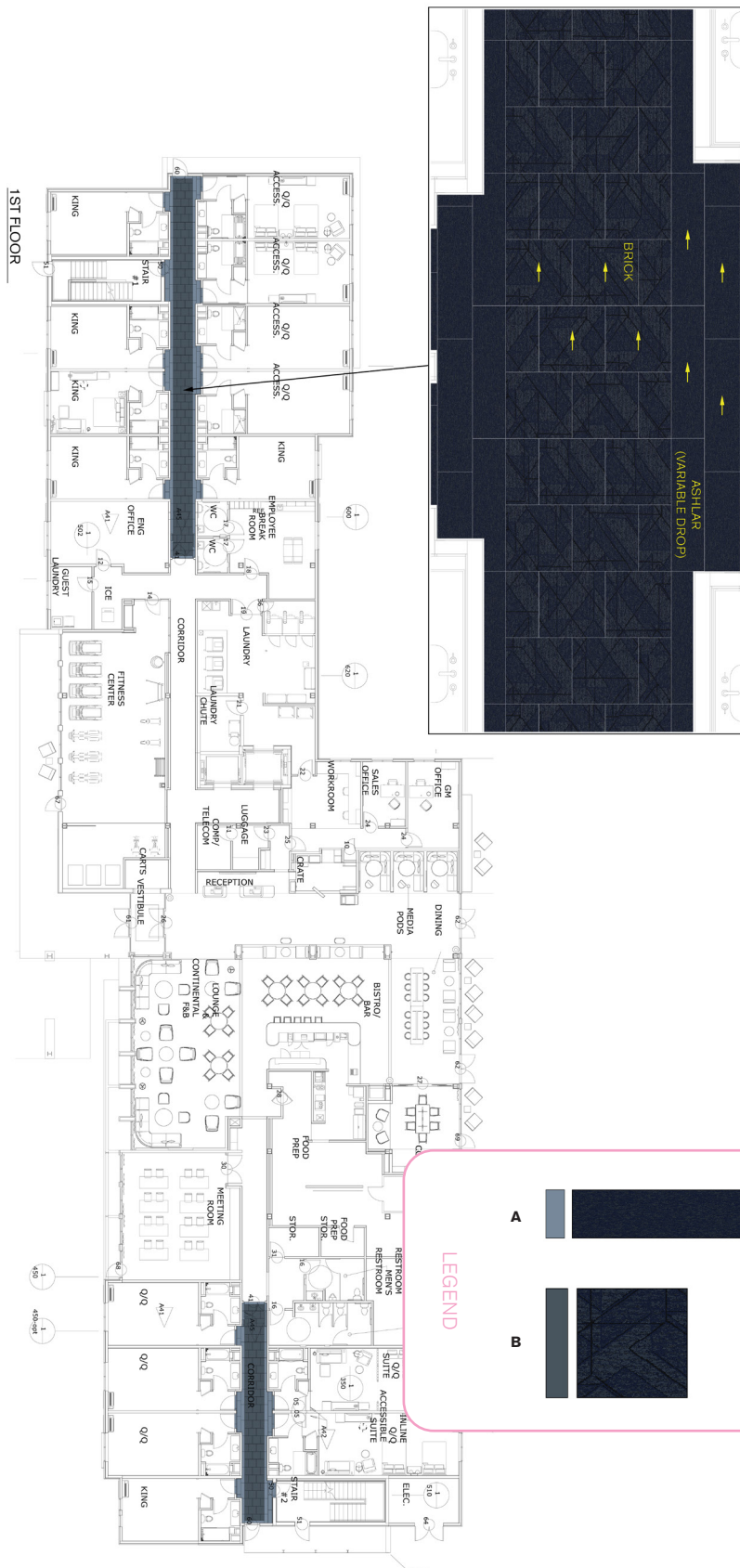
No Pad Required

Corridor Products	Marriott Spec. #	Sample #	Color #	Size	Installation
Custom A	315711	268596-138	189264	25cm x 1m	Ashlar
Custom B	315713	268596-151	189263	50cm x 50cm	Brick
Custom 4" Carpet Base		268596-196		4" x 25' Rolls	
Installation Specifications	Description				
XL2000 Plus Adhesive	Adhesive				
Pad / Underlayment	NOT REQUIRED				

CORRIDOR INSTALLATION PLAN

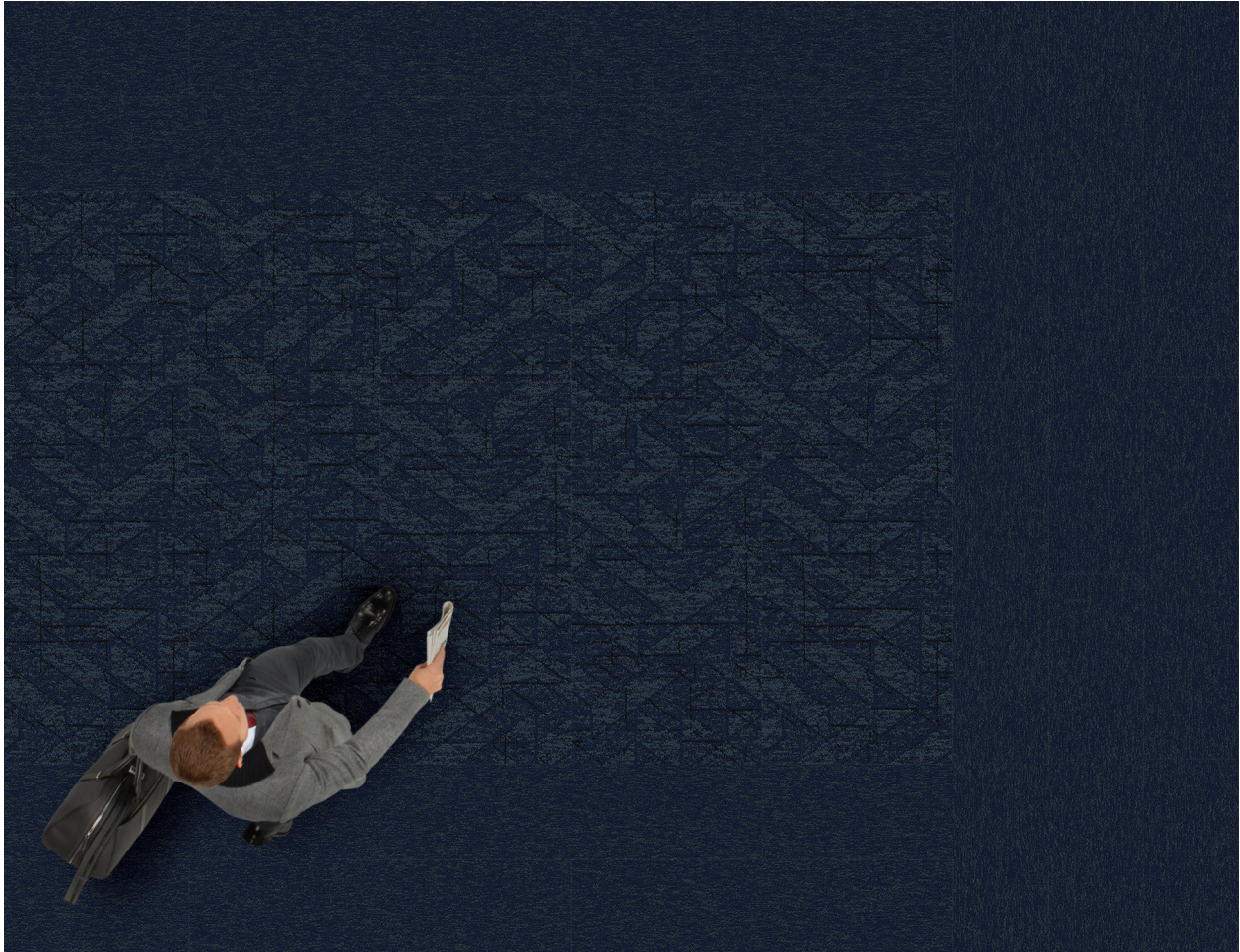
Interface Hospitality

All quantities are estimates only and are based on plans provided. Site measurements and field verifications are recommended to ensure accuracy. These quantities are not intended to be used for material ordering purposes. Since waste factors may vary by installer, actual ordering quantities are the responsibility of your flooring contractor



Inspired Classic Elevator Lobby Prototype Order Information

CONTACT: Sofia Davila sofia.davila@interface.com | 347.633.0577 or your local Account Executive



Elevator Lobby Products	Marriott Spec. #	Sample #	Color #	Size	Installation
Custom	315714	268596-152	189265	50cm x 50cm	Brick
Custom	315711	268596-138	189264	25cm x 1m	Ashlar
Custom 4" Carpet Base		268596-196		4" x 25' Rolls	
Installation Specifications		Description			
XL2000 Plus Adhesive		Adhesive			
Pad / Underlayment		NOT REQUIRED			

Interface® Hospitality

The floor plan shows a long corridor with rooms on both sides. Rooms are labeled 'KING', 'KING MOD', 'KING SUITE', and 'Q/Q'. There are two stairwells, 'STAIR #1' and 'STAIR #2'. A callout box from a room area shows a detailed view of the tile installation. The detailed view shows a grid of tiles with labels 'ASHLAR (VARIABLE DROP)' and 'BRICK'. Yellow arrows indicate the direction of the tile pattern. A legend at the bottom left identifies the tile types and colors.

LEGEND

A [Color swatch: Dark Blue] [Color swatch: Dark Blue]

B [Color swatch: Blue] [Color swatch: Dark Blue]

PRODUCT: CUSTOM
COLOR: 189264
SIZE: 25cm x 1m
INSTALLED: ASHLAR

PRODUCT: CUSTOM
COLOR: 189265
SIZE: 50cm x 50cm
INSTALLED: BRICK

Inspired Classic Lounge Prototype Order Information

CONTACT: Sofia Davila sofia.davila@interface.com | 347.633.0577 or your local Account Executive



Lounge Products	Marriott Spec. #	Sample #	Color #	Size	Installation
Custom	315715	268596-153	189266	50cm x 50cm	Brick
Custom 4" Carpet Base		268596-196		4" x 25' Rolls	
Installation Specifications		Description			
XL2000 Plus Adhesive		Adhesive			
Pad / Underlayment		NOT REQUIRED			

LOUNGE INSTALLATION PLAN

Interface Hospitality

All quantities are estimates only and are based on plans provided. Site measurements and field verifications are recommended to ensure accuracy. These quantities are not intended to be used for material ordering purposes. Since waste factors may vary by installer, actual ordering quantities are the responsibility of your flooring contractor



Inspired Classic Meeting Room Prototype Order Information

CONTACT: Sofia Davila sofia.davila@interface.com | 347.633.0577 or your local Account Executive

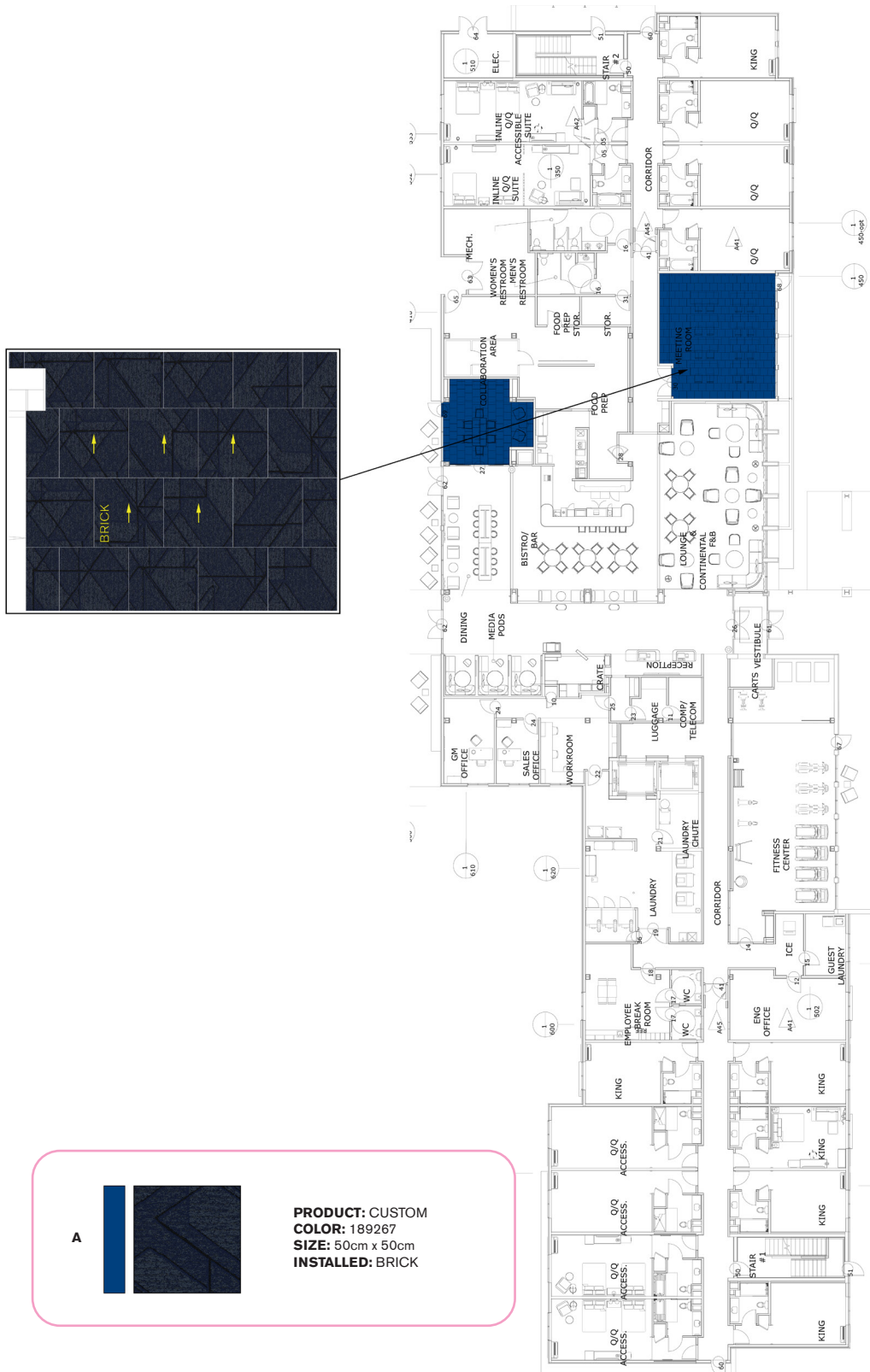


Meeting Room Product	Marriott Spec. #	Sample #	Color #	Size	Installation
Custom	315716	268596-158	189267	50cm x 50cm	Brick
Custom 4" Carpet Base		268596-196		4" x 25' Rolls-	
Installation Specifications		Description			
XL2000 Plus Adhesive		Adhesive			
Pad / Underlayment		NOT REQUIRED			

MEETING ROOM INSTALLATION PLAN

Interface Hospitality

All quantities are estimates only and are based on plans provided. Site measurements and field verifications are recommended to ensure accuracy. These quantities are not intended to be used for material ordering purposes. Since waste factors may vary by installer, actual ordering quantities are the responsibility of your flooring contractor



Simply Crafted Mint Décor ACC King and King Guestroom Prototype Order Information

CONTACT: Sofia Davila sofia.davila@interface.com | 347.633.0577 or your local Account Executive



Guestroom Products	Marriott Spec. #	Kit #	Color #	Size	Installation
*LVT Option - Textured Woodgrains	313007		A00406 Antique Light Oak	25cm x 1m	Ashlar
*LVT Option - Textured Woodgrains	313008		A00409 Ash Walnut	25cm x 1m	Ashlar
ACC King Mint Area Rug Kit	313125	98-1110-43	189105	8'-2" x 9'-10"	Ashlar
King Mint Area Rug Kit	313128	98-1110-43	189105	8' 2" x 9'-10"	Ashlar
Installation Specifications	Marriott Spec.#	Description			
XL2000 PLUS Adhesive		Double stick install			
Selitbloc LVT Underlayment	276822	Underlayment for entire room with carpet and LVT system			

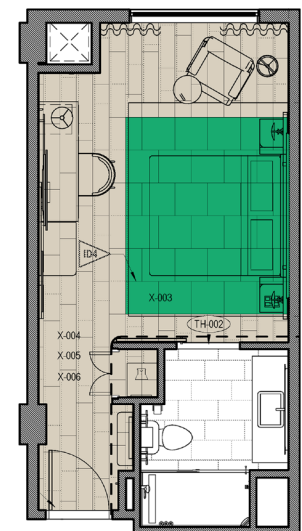
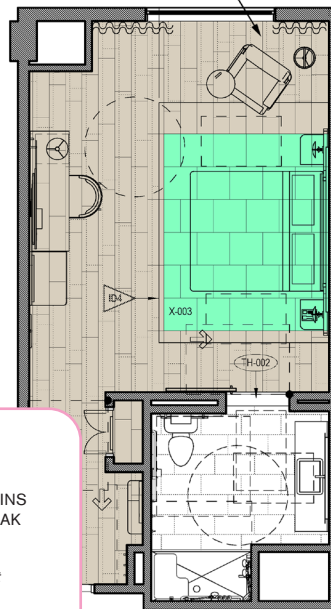
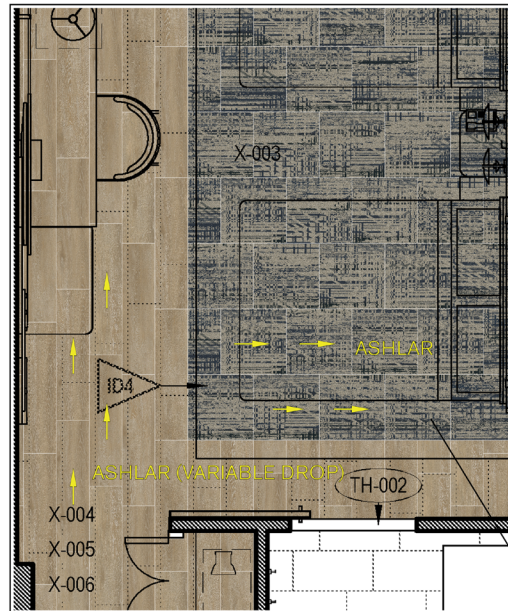
* Select from either LVT listed above. Antique Light Oak is pictured.

**Pad not required with carpet tile but acoustical underlayment is required with the LVT and carpet tile system

GUESTROOM INSTALLATION PLAN

Interface Hospitality

All quantities are estimates only and are based on plans provided. Site measurements and field verifications are recommended to ensure accuracy. These quantities are not intended to be used for material ordering purposes. Since waste factors may vary by installer, actual ordering quantities are the responsibility of your flooring contractor

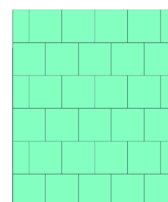


LEGEND



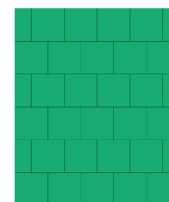
ACC KING INSET RUG

8'2" x 9'10"
 30 TILES TOTAL
 27 FULL TILES/ 3 TILES CUT IN HALF



STD KING INSET RUG

8'2" x 9'10"
 30 TILES TOTAL
 27 FULL TILES/ 3 TILES CUT IN HALF



Simply Crafted Plum Décor ACC King and King Guestroom Prototype Order Information

CONTACT: Sofia Davila sofia.davila@interface.com | 347.633.0577 or your local Account Executive



Guestroom Products	Marriott Spec. #	Kit #	Color #	Size	Installation
*LVT Option - Textured Woodgrains	313007		A00406 Antique Light Oak	25cm x 1m	Ashlar
*LVT Option - Textured Woodgrains	313008		A00409 Ash Walnut	25cm x 1m	Ashlar
ACC King Plum Area Rug Kit	313124	98-1110-42	189102	8'-2" x 9'-10"	Ashlar
King Plum Area Rug Kit	313126	98-1110-42	189102	8'-2" x 9'-10"	Ashlar
Installation Specifications	Marriott Spec.#	Description			
XL2000 PLUS Adhesive		Double stick install			
Selitbloc LVT Underlayment	276822	Underlayment for entire room with carpet and LVT system			

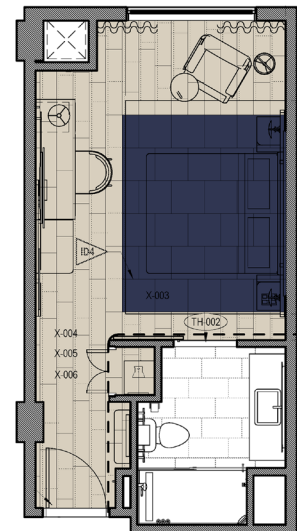
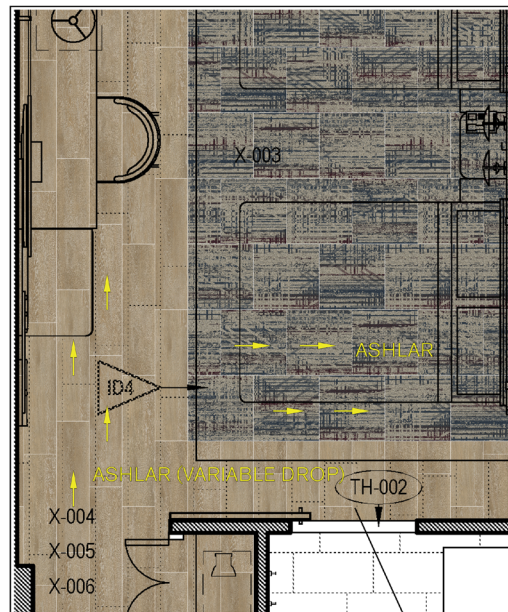
* Select from either LVT listed above. Antique Light Oak is pictured.

**Pad not required with carpet tile but acoustical underlayment is required with the LVT and carpet tile system

GUESTROOM INSTALLATION PLAN

Interface Hospitality

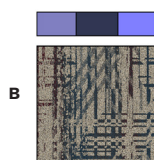
All quantities are estimates only and are based on plans provided. Site measurements and field verifications are recommended to ensure accuracy. These quantities are not intended to be used for material ordering purposes. Since waste factors may vary by installer, actual ordering quantities are the responsibility of your flooring contractor



LEGEND



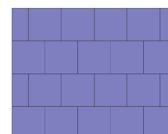
PRODUCT: TEXTURED WOODGRAINS
COLOR: A00406 ANTIQUE LIGHT OAK
SIZE: 25cm X 1m
INSTALLED: ASHLAR
 *An LVT option is A00409 Ash Walnut



PRODUCT: CUSTOM
COLOR: 189102
SIZE: 50cm
INSTALLED: ASHLAR

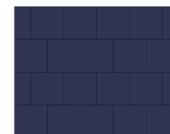
ACC KING INSET RUG

8'2" x 9'10"
 30 TILES TOTAL
 27 FULL TILES/ 3 TILES CUT IN HALF



STD KING INSET RUG

8'2" x 9'10"
 30 TILES TOTAL
 27 FULL TILES/ 3 TILES CUT IN HALF



Simply Crafted Mint Décor Queen Guestroom Prototype Order Information

CONTACT: Sofia Davila sofia.davila@interface.com | 347.633.0577 or your local Account Executive



Guestroom Products	Marriott Spec. #	Kit #	Color #	Size	Installation
*LVT Option Textured Woodgrains	313007		A00406 Antique Light Oak	25cm x 1m	Ashlar
*LVT Option Textured Woodgrains	313008		A00409 Ash Walnut	25cm x 1m	Ashlar
Queen Mint Area Rug Kit	313129	98-1110-45	189105	8'-2" x 14'-9"	Ashlar
Installation Specifications	Marriott Spec.#	Description			
XL2000 PLUS Adhesive		Double stick install			
Selitbloc LVT Underlayment	276822	Underlayment for entire room with carpet and LVT system			

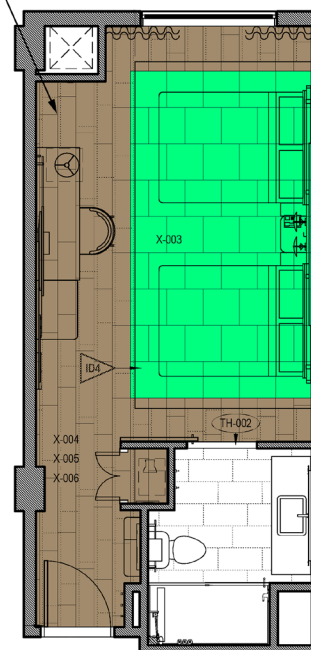
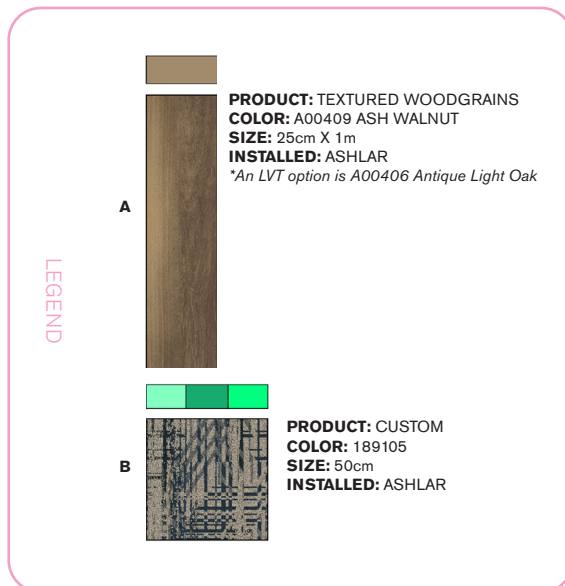
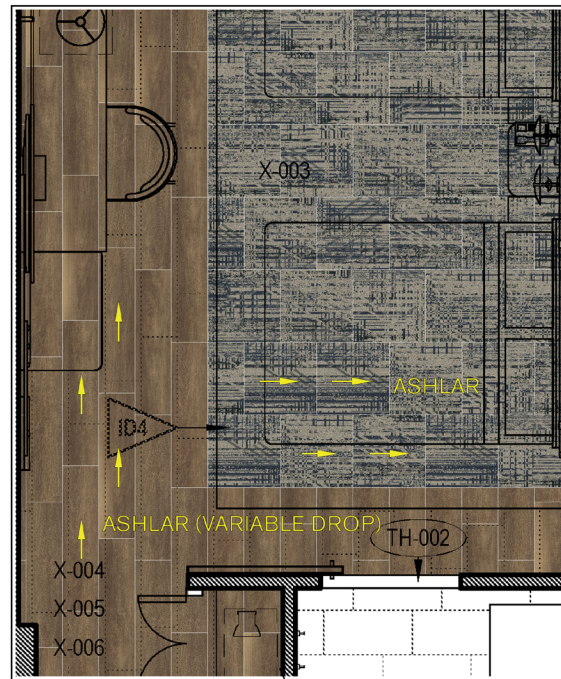
* Select from either LVT listed above. Ash Walnut is pictured.

**Pad not required with carpet tile but acoustical underlayment is required with the LVT and carpet tile system

GUESTROOM INSTALLATION PLAN

Interface Hospitality

All quantities are estimates only and are based on plans provided. Site measurements and field verifications are recommended to ensure accuracy. These quantities are not intended to be used for material ordering purposes. Since waste factors may vary by installer, actual ordering quantities are the responsibility of your flooring contractor



STD Q/Q
 INSET RUG

8'2" x 14'9"
 45 TILES TOTAL
 41 FULL TILES/ 4 TILES CUT IN HALF

Simply Crafted Plum Décor Queen Guestroom Prototype Order Information

CONTACT: Sofia Davila sofia.davila@interface.com | 347.633.0577 or your local Account Executive



Guestroom Products	Marriott Spec. #	Kit #	Color #	Size	Installation
*LVT Option Textured Woodgrains	313007		A00406 Antique Light Oak	25cm x 1m	Ashlar
*LVT Option Textured Woodgrains	313008		A00409 Ash Walnut	25cm x 1m	Ashlar
Queen Plum Area Rug Kit	313131	98-1110-44	189102	8'-2" x 14'-9"	Ashlar
Installation Specifications	Marriott Spec.#	Description			
XL2000 PLUS Adhesive		Double stick install			
Selitbloc LVT Underlayment	276822	Underlayment for entire room with carpet and LVT system			

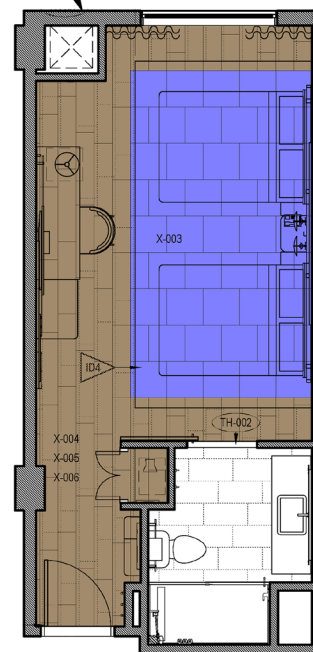
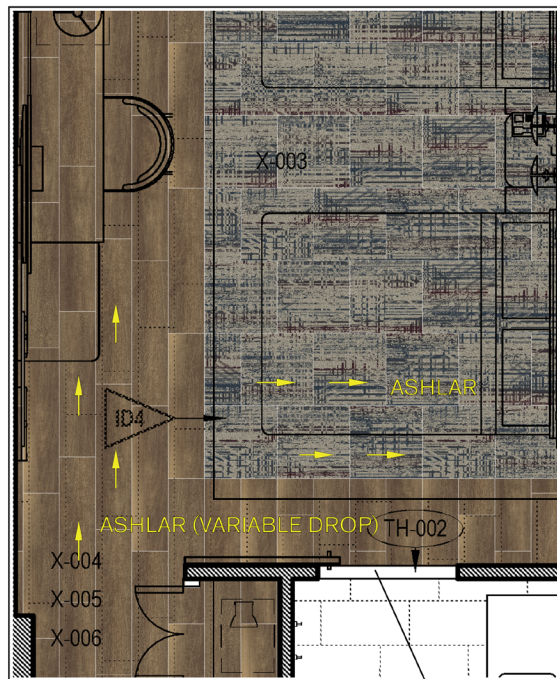
* Select from either LVT listed above. Ash Walnut is pictured.

**Pad not required with carpet tile but acoustical underlayment is required with the LVT and carpet tile system

GUESTROOM INSTALLATION PLAN

Interface Hospitality

All quantities are estimates only and are based on plans provided. Site measurements and field verifications are recommended to ensure accuracy. These quantities are not intended to be used for material ordering purposes. Since waste factors may vary by installer, actual ordering quantities are the responsibility of your flooring contractor



STD Q/Q
INSET RUG

8'2" x 14'9"
45 TILES TOTAL
41 FULL TILES/ 4 TILES CUT IN HALF

Enliven Guestroom Prototype Order Information

CONTACT: Sofia Davila sofia.davila@interface.com | 347.633.0577 or your local Account Executive



Guestroom Products	Marriott Spec. #	Sample # / Kit #	Color #	Size	Installation
Natural Woodgrain LVT A	277944		A00203 Chestnut	25cm x 1m	Random Ashlar
RMS102 B	274268	260688-038	183657	50cm x 50cm	Brick
Area Rug Kit	274269	98.1110.09	183657	6'-6 3/4" x 8'-2 3/8"	Brick
Area Rug Kit	274271	98.1110.10	183657	9'-10 1/8" x 11'-5 25/32"	Brick

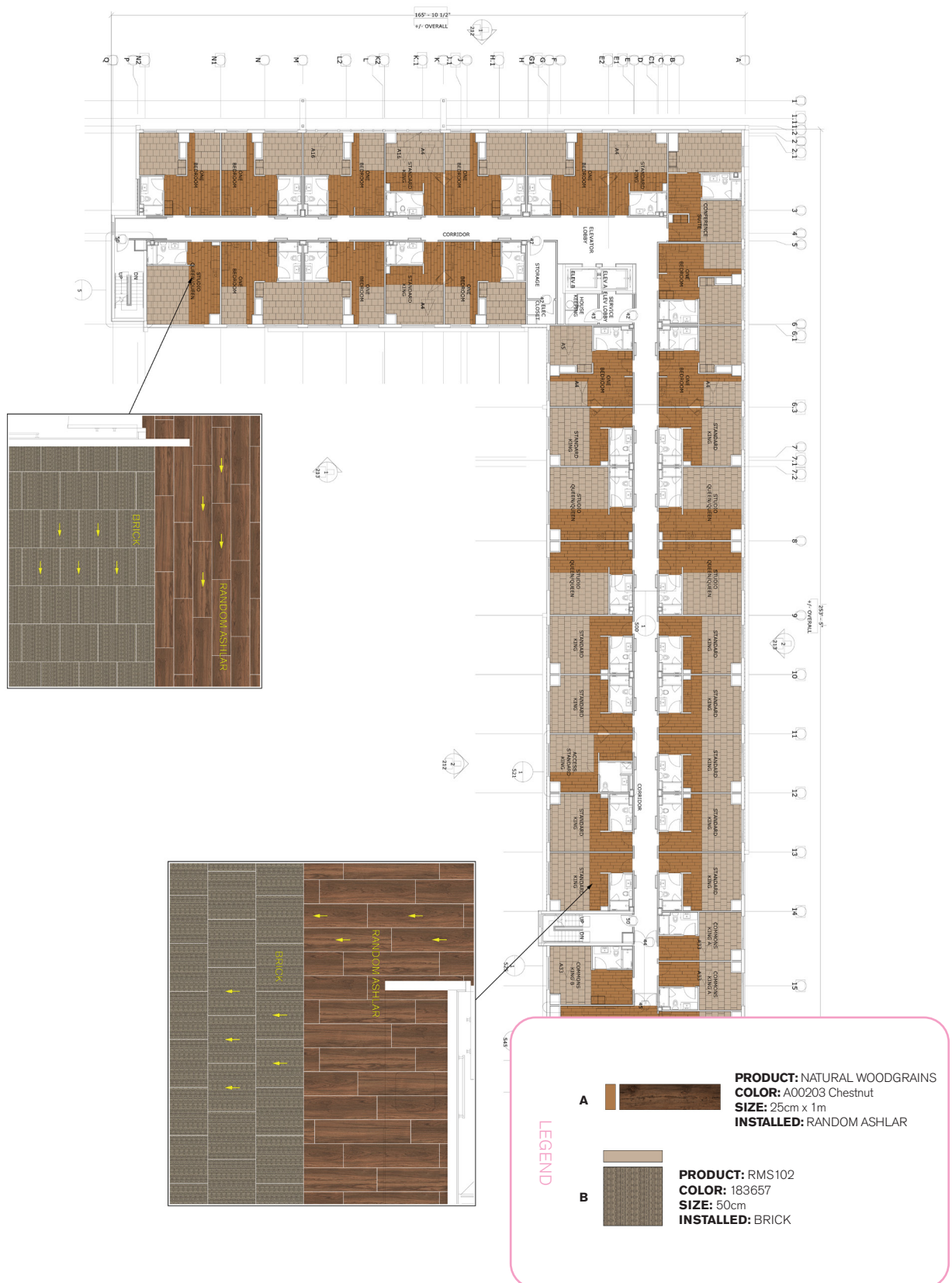
Installation Specifications	Marriott Spec.#	Description
TacTiles for Installation (500 TacTiles/Roll)	250475	60sq yds/ Roll Adhesive
XL2000 PLUS Adhesive		Double stick install
Selitbloc LVT Underlayment	276822	Underlayment for entire room with carpet and LVT system

*Pad not required with carpet tile but acoustical underlayment is required with the LVT and carpet tile system

GUESTROOM INSTALLATION PLAN

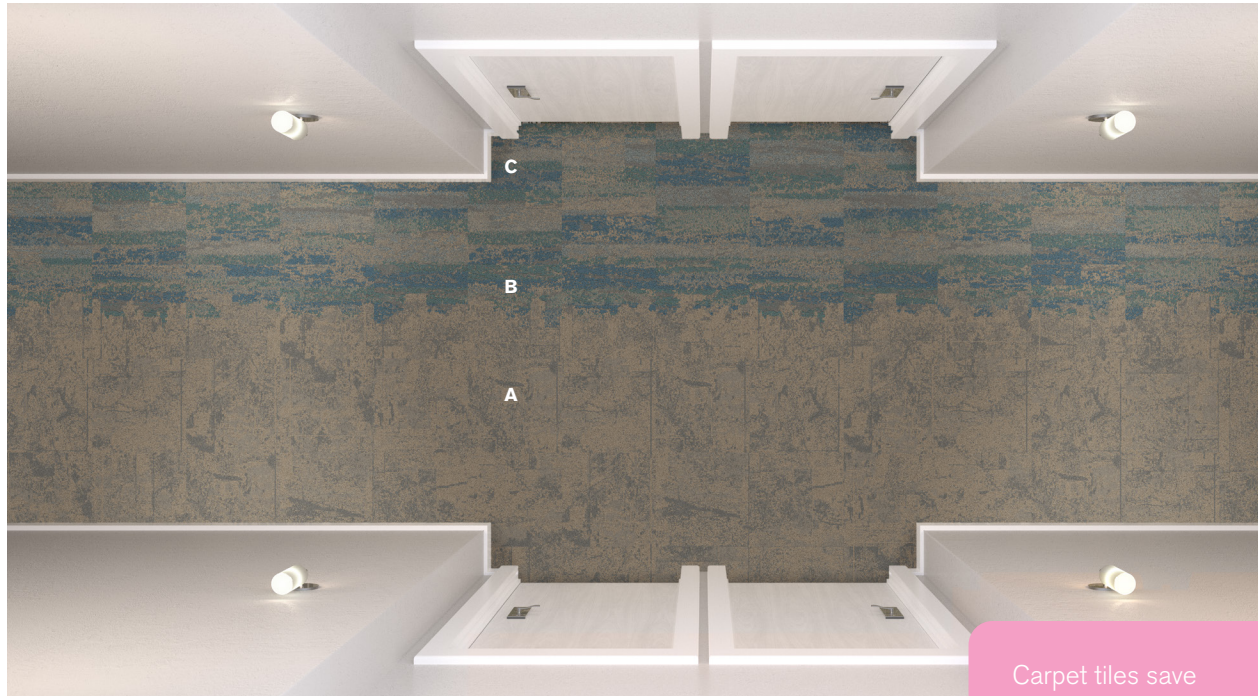
Interface Hospitality

All quantities are estimates only and are based on plans provided. Site measurements and field verifications are recommended to ensure accuracy. These quantities are not intended to be used for material ordering purposes. Since waste factors may vary by installer, actual ordering quantities are the responsibility of your flooring contractor



Enliven Corridor Prototype Order Information

CONTACT: Sofia Davila sofia.davila@interface.com | 347.633.0577 or your local Account Executive



Carpet tiles save approximately 18-20% in product waste verses broadloom, based on prototype layout.

No Pad Required

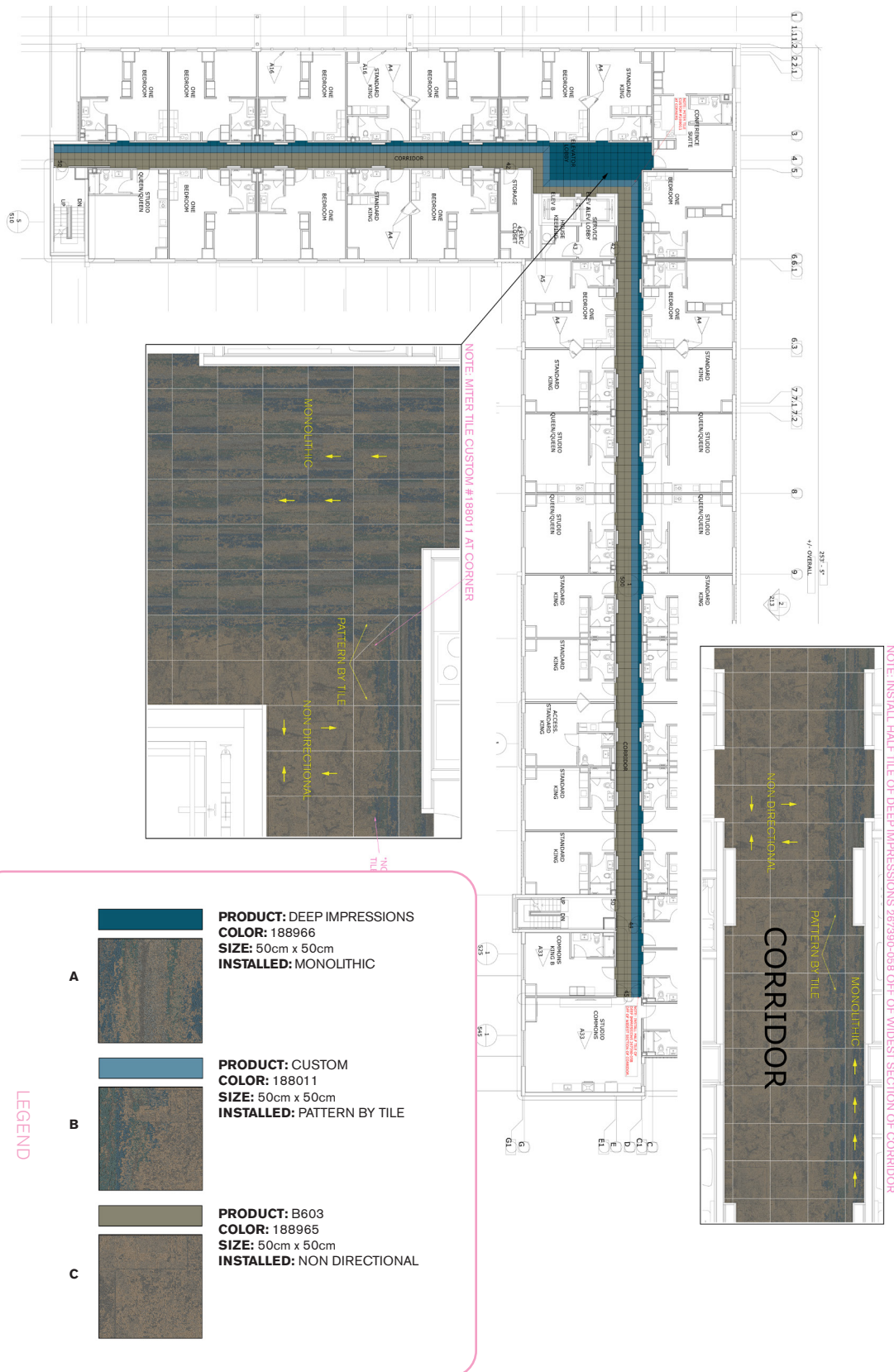
Corridor Products	Marriott Spec. #	Sample #	Color #	Size	Installation
B603 A	296913	267390-055	188965	50cm x 50cm	Pattern By Tile
Custom B	297026	267390-059	188011	50cm x 50cm	Pattern By Tile
Deep Impressions C	297027	267390-058	188966	50cm x 50cm	Pattern By Tile

Installation Specifications	Marriott Spec.#	Description
TacTiles for Installation (500 TacTiles/Roll)	250475	125 sq yds/ Roll Adhesive
Pad / Underlayment	NOT REQUIRED	

CORRIDOR INSTALLATION PLAN

Interface Hospitality

All quantities are estimates only and are based on plans provided. Site measurements and field verifications are recommended to ensure accuracy. These quantities are not intended to be used for material ordering purposes. Since waste factors may vary by installer, actual ordering quantities are the responsibility of your flooring contractor



Enliven Lounge Prototype Order Information

CONTACT: Sofia Davila sofia.davila@interface.com | 347.633.0577 or your local Account Executive



Lounge Products	Marriott Spec. #	Kit #	Color #	Size	Installation
HN840 A	278013		104226 Shale	25cm x 1m	Ashlar
HN850 B	278012		104210 Shale	25cm x 1m	Ashlar
HN810 C	278008		104218 Shale	25cm x 1m	Ashlar
Studio Commons (Area Rug Kit)	286295	98.1110.13	183657	*12'-6 x 8'-6	Brick

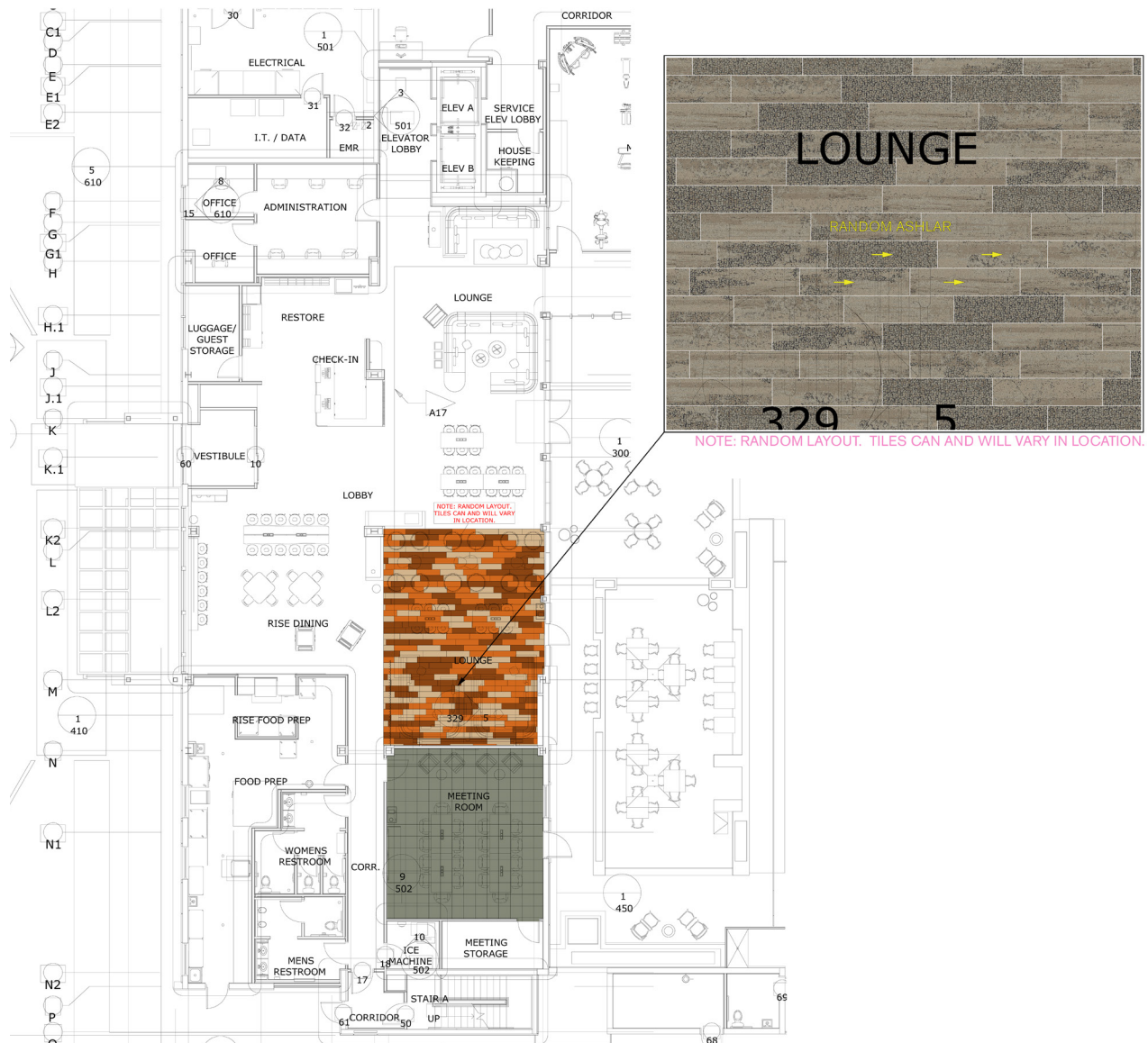
Installation Specifications	Marriott Spec.#	Description
TacTiles for Installation (500 TacTiles/Roll)	250475	60sq yds/ Roll Adhesive
Pad / Underlayment	NOT REQUIRED	

* Rug to be cut to fit onsite

LOUNGE INSTALLATION PLAN

Interface Hospitality

All quantities are estimates only and are based on plans provided. Site measurements and field verifications are recommended to ensure accuracy. These quantities are not intended to be used for material ordering purposes. Since waste factors may vary by installer, actual ordering quantities are the responsibility of your flooring contractor



- LEGEND**
- A**  **PRODUCT:** HN810
COLOR: 104218 SHALE
SIZE: 25cm x 1m
INSTALLED: RANDOM ASHLAR
 - B**  **PRODUCT:** HN850
COLOR: 104210 SHALE
SIZE: 25cm x 1m
INSTALLED: RANDOM ASHLAR
 - C**  **PRODUCT:** HN840
COLOR: 104226 SHALE
SIZE: 25cm x 1m
INSTALLED: RANDOM ASHLAR

Enliven Meeting Room and Admin Offices Prototype Order Information

CONTACT: Sofia Davila sofia.davila@interface.com | 347.633.0577 or your local Account Executive



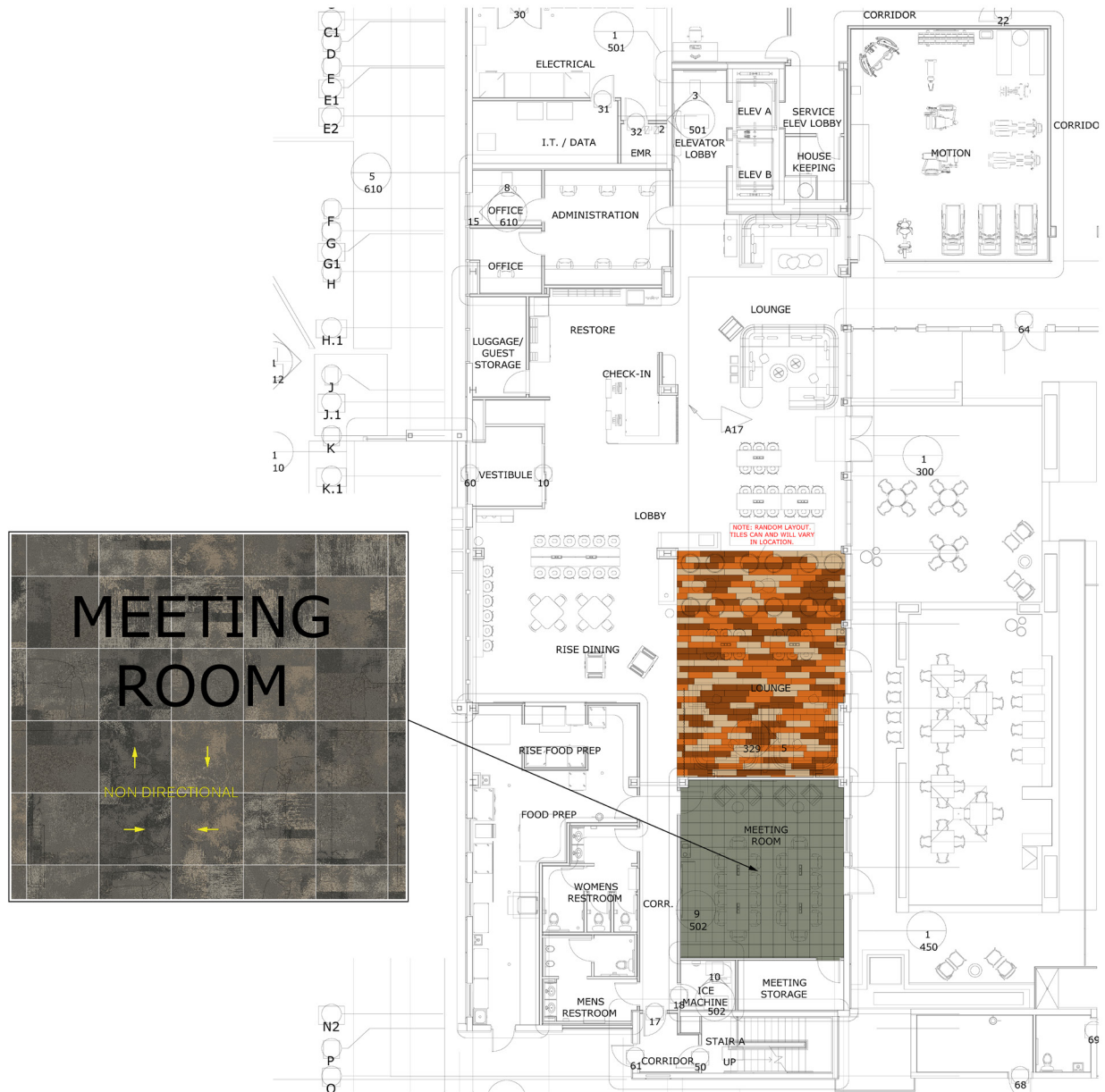
Meeting Room Product	Marriott Spec. #	Color #	Size	Installation
Raw A	278014	101054 Urban	50cm x 50cm	Non Directional

Installation Specifications	Marriott Spec.#	Description
TacTiles for Installation (500 TacTiles/Roll)	250475	125sq yds/ Roll Adhesive
Pad / Underlayment	NOT REQUIRED	

MEETING ROOM INSTALLATION PLAN

Interface Hospitality

All quantities are estimates only and are based on plans provided. Site measurements and field verifications are recommended to ensure accuracy. These quantities are not intended to be used for material ordering purposes. Since waste factors may vary by installer, actual ordering quantities are the responsibility of your flooring contractor



LEGEND

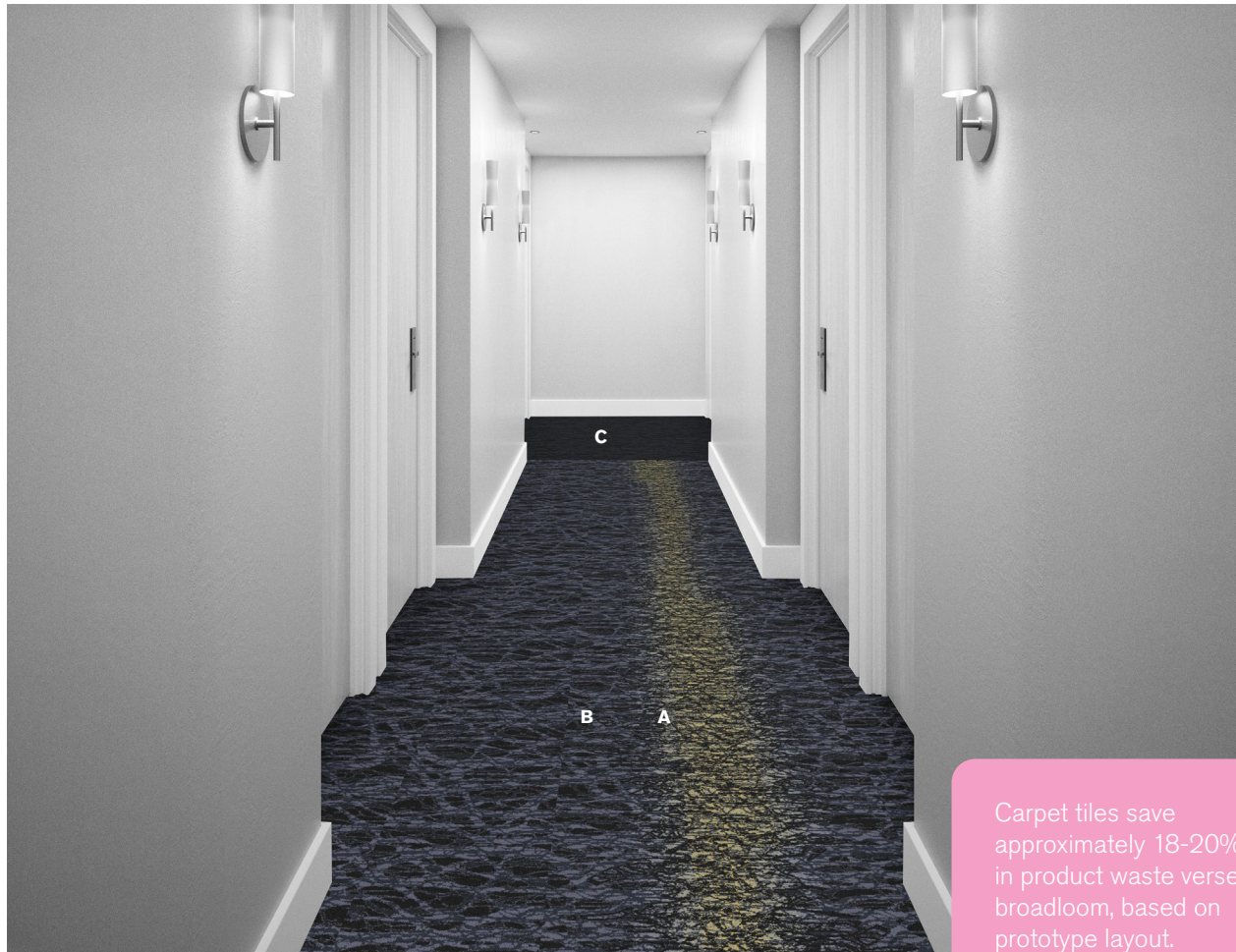
A



PRODUCT: RAW
COLOR: 101054 URBAN
SIZE: 50cm
INSTALLED: NON DIRECTIONAL

Modern Calm Prototype Order Information

CONTACT: Sofia Davila sofia.davila@interface.com | 347.633.0577 or your local Account Executive



Carpet tiles save approximately 18-20% in product waste versus broadloom, based on prototype layout.

No Pad Required

Corridor Products	Marriott Spec.#	Sample #	Color #	Size
Custom Pattern A	277373	265389-044	186560	50cm x 1m
Custom Pattern B	277371	265389-002	186559	50cm x 1m
Custom Pattern C	277374	265389-007	186558	50cm x 1m
Monochrome 4" Base	277370	265389-051	186561	4" x 25' Rolls

Installation Specifications	Spec. #	Description
TacTiles for Installation (500 TacTiles/Roll)	250475	60sq yds/ Roll Adhesive
Pad /Underlayment	NOT REQUIRED	Public Spaces

CORRIDOR INSTALLATION PLAN

All quantities are estimates only and are based on plans provided. Site measurements and field verifications are recommended to ensure accuracy. These quantities are not intended to be used for material ordering purposes. Since waste factors may vary by installer, actual ordering quantities are the responsibility of your flooring contractor



Vintage Modern Corridor Prototype Order Information

CONTACT: Sofia Davila sofia.davila@interface.com | 347.633.0577 or your local Account Executive



Carpet tiles save approximately 18-20% in product waste verses broadloom, based on prototype layout.

No Pad Required

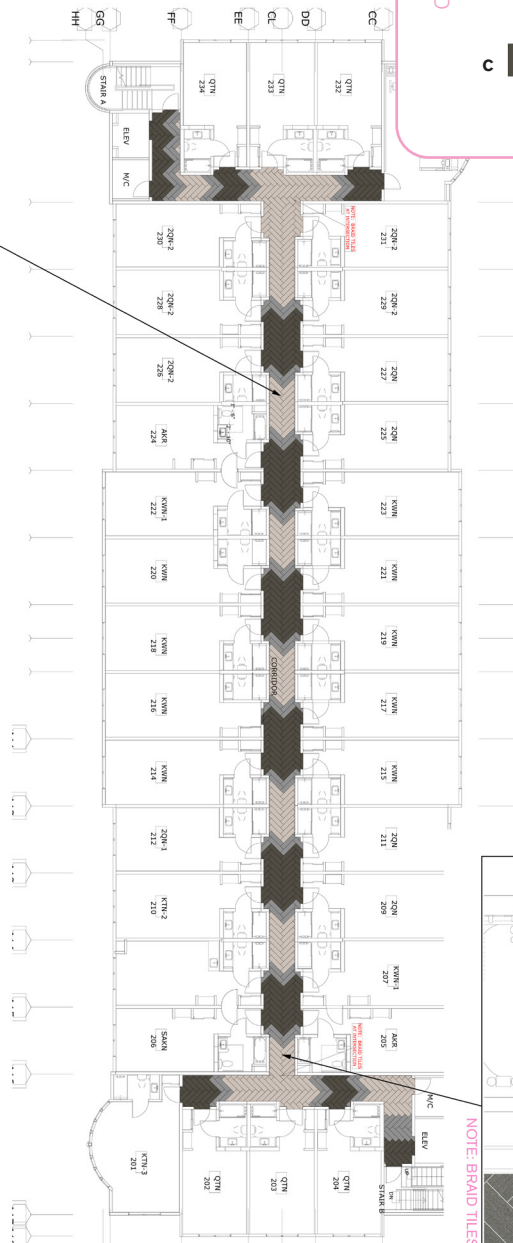
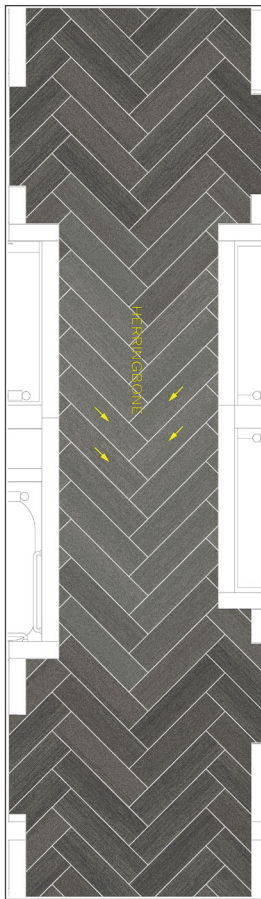
Corridor Products	Marriott Spec. #	Color #	Size	Installation
Harmonize A	275327	104041 Iceberg	25cm x 1m	Herringbone
Harmonize B	283445	104044 Pewter	25cm x 1m	Herringbone
Harmonize C	283444	104043 Gravel	25cm x 1m	Herringbone

Installation Specifications	Marriott Spec.#	Description
TacTiles for Installation (500 TacTiles/Roll)	250475	60sq yds/ Roll Adhesive
Pad / Underlayment	NOT REQUIRED	

CORRIDOR INSTALLATION PLAN

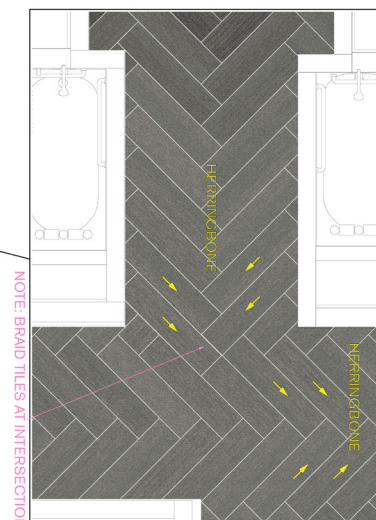
Interface Hospitality

All quantities are estimates only and are based on plans provided. Site measurements and field verifications are recommended to ensure accuracy. These quantities are not intended to be used for material ordering purposes. Since waste factors may vary by installer, actual ordering quantities are the responsibility of your flooring contractor



LEGEND

- A**  **PRODUCT: HARMONIZE**
COLOR: 104041 ICEBERG
SIZE: 25cm x 1m
INSTALLED: HERRINGBONE
- B**  **PRODUCT: HARMONIZE**
COLOR: 104044 PEWTER
SIZE: 25cm x 1m
INSTALLED: HERRINGBONE
- C**  **PRODUCT: HARMONIZE**
COLOR: 104043 GRAVEL
SIZE: 25cm x 1m
INSTALLED: HERRINGBONE



NOTE: BRAID TILES AT INTERSECTION

Vintage Modern Guestroom Prototype Order Information

CONTACT: Sofia Davila sofia.davila@interface.com | 347.633.0577 or your local Account Executive



Guestroom Products	Marriott Spec. #	Kit #	Color #	Size	Installation
Natural Woodgrains LVT A	283403		A00212 Cedar	25cm x 1m	Random Ashlar
Asteria B	274963	263115-037	186254	50cm x 50cm	Non Directional
Guestroom Area Rug Kit	284388	98.1110.10	186254	9'-10.1" x 8'-2.4"	
ADA Guestroom Area Rug Kit	284389	98.1110.12	186254	14'-9.2" x 8'-2.4"	
Guestroom Area Rug Kit	284390	98.1110.12	186254	14'-9.2" x 8'-2.4"	

Installation Specifications	Marriott Spec.#	Description
TacTiles for Installation (500 TacTiles/Roll)	250475	60sq yds/ Roll Adhesive
XL2000 PLUS Adhesive		Double stick install
Selitbloc LVT Underlayment	276822	Underlayment for entire room with carpet and LVT system

*Pad not required with carpet tile but acoustical underlayment is required with the LVT and carpet tile system

GUESTROOM INSTALLATION PLAN

Interface Hospitality

All quantities are estimates only and are based on plans provided. Site measurements and field verifications are recommended to ensure accuracy. These quantities are not intended to be used for material ordering purposes. Since waste factors may vary by installer, actual ordering quantities are the responsibility of your flooring contractor



LEGEND

A

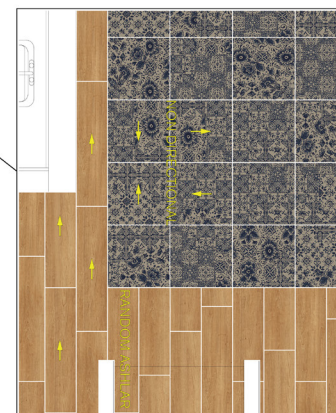
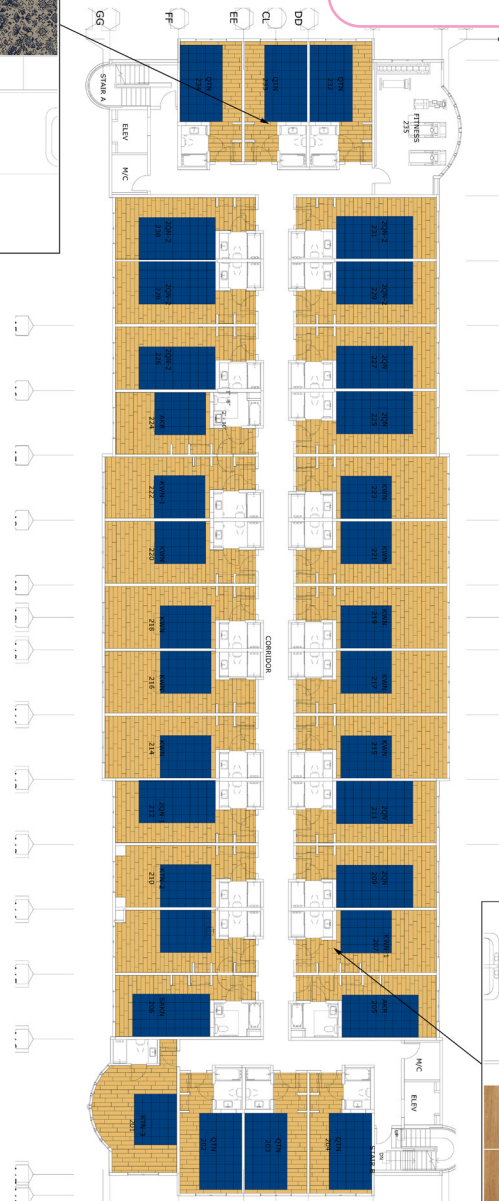


PRODUCT: NATURAL WOODGRAINS
COLOR: A00212 CEDAR
SIZE: 25cm x 1m
INSTALLED: RANDOM ASHLAR

B



PRODUCT: ASTERIA
COLOR: 186254
SIZE: 50cm
INSTALLED: NON DIRECTIONAL



MC2 Guestroom and Bathroom Schemes

CONTACT: Sofia Davila sofia.davila@interface.com | 347.633.0577 or your local Account Executive

SELECT YOUR LVT

Simple. Straightforward.
Select from these Marriott MC2
prototype woodgrain LVT styles.



Corridor Products	Marriott Spec. #	Color #	Size	Installation
LVT Textured Woodgrains A	298920	A00416 Antique Dark Oak	25cm x 1m	Random Ashlar
LVT Natural Woodgrains B	309649	A00202 Madagascar	25cm x 1m	Random Ashlar
LVT Textured Woodgrains C	309673	A00407 White Wash	25cm x 1m	Random Ashlar
LVT Natural Woodgrains D	309672	A00211 Washed Maple	25cm x 1m	Random Ashlar

Installation Specifications	Marriott Spec.#	Description
XL2000 PLUS Adhesive		Double stick install with seam sealer in wet locations
Selitbloc LVT Underlayment	276822	Underlayment for entire room with carpet and LVT system

*Acoustical underlayment is required with the LVT

GUESTROOM INSTALLATION PLAN

Interface Hospitality

All quantities are estimates only and are based on plans provided. Site measurements and field verifications are recommended to ensure accuracy. These quantities are not intended to be used for material ordering purposes. Since waste factors may vary by installer, actual ordering quantities are the responsibility of your flooring contractor



NOTE: For installation in bathrooms or wet areas, apply a bead of silicone caulking around perimeter seams and plumbing fixtures where the VT plank/tile terminates

MC2 Guestroom

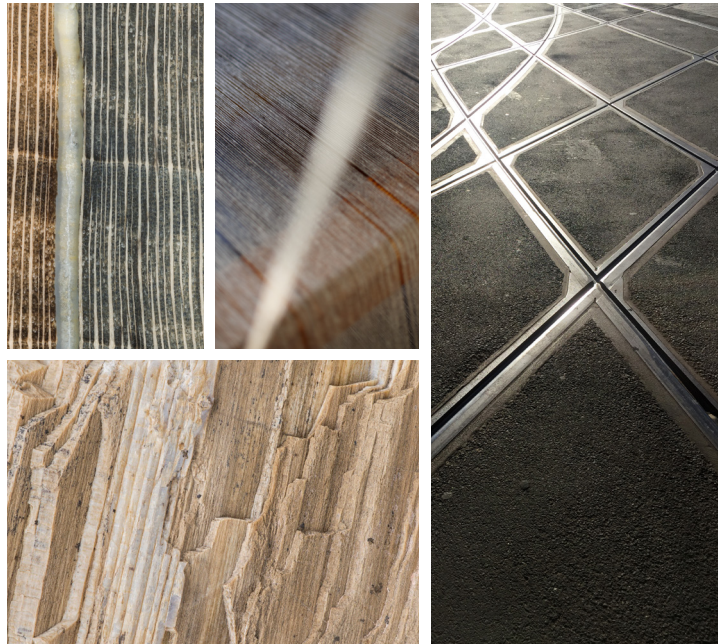
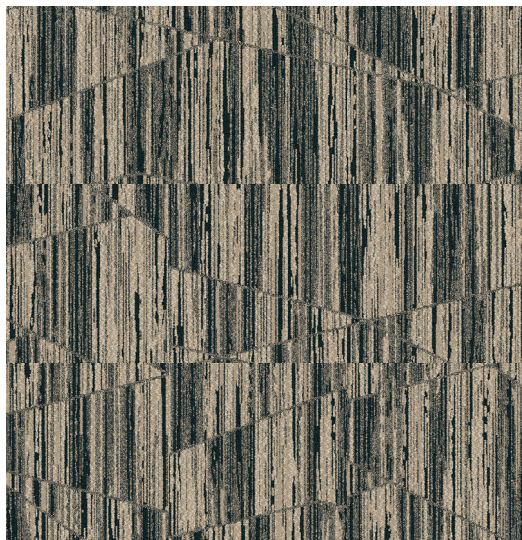
DESIGN YOUR CUSTOM RUG PATTERN: Contact your local Account Executive and start designing.

DESIGN INSPIRATION

Want to pair your chosen LVT with a unique rug?

Working with Interface's in-house product designers, you set the vision for patterns and color that will develop into a fully custom carpet design.

Once approved, the design team will create physical carpet samples and a mock-up to see how the "real" product comes together on the floor. It's a personal touch from start to finish

Custom Inspiration**Custom Pattern Grid****Custom Installation**

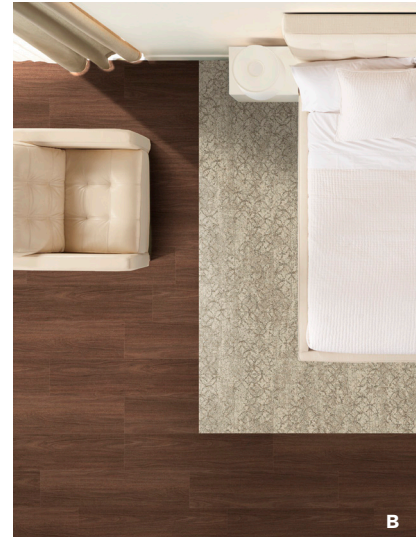
MC2 Guestroom

SELECT YOUR CUSTOM RUG PATTERN: Contact your local Account Executive and start designing.

CUSTOM PATTERNS

If you want to forego a fully custom rug, own your narrative with these inspiring patterns.

Once selected, the design team will create physical carpet samples and a floor mock-up for you to approve.



Guestroom Products	Marriott Spec. #	Custom #	Size	Installation
LVT Textured Woodgrains	309649	A00202 Madagascar	25cm x 1m	Random Ashlar
Custom Rug Option A		268400-088	50cm x 50cm	Ashlar
Custom Rug Option B		268400-109	50cm x 50cm	Ashlar
Custom Rug Option C		268400-106	50cm x 50cm	Ashlar
Custom Rug Option D		268400-107	50cm x 50cm	Ashlar
Custom Rug Option E		268400-108	50cm x 50cm	Ashlar

Installation Specifications	Marriott Spec.#	Description
XL2000 PLUS Adhesive		Double stick install with seam sealer in wet locations
Selitbloc LVT Underlayment	276822	Underlayment for entire room with carpet and LVT system

*Acoustical underlayment is required with the LVT.

**Refer to Page #4 for additional LVT selections.

MC2 Guestroom

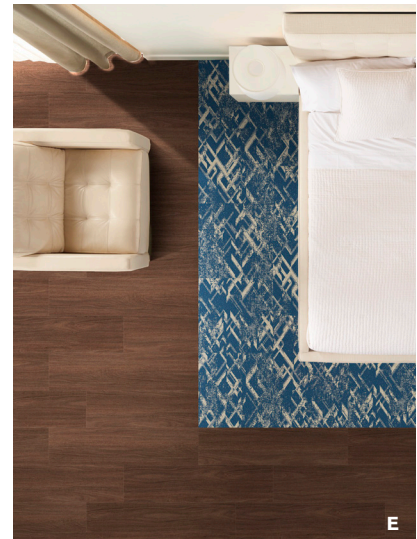
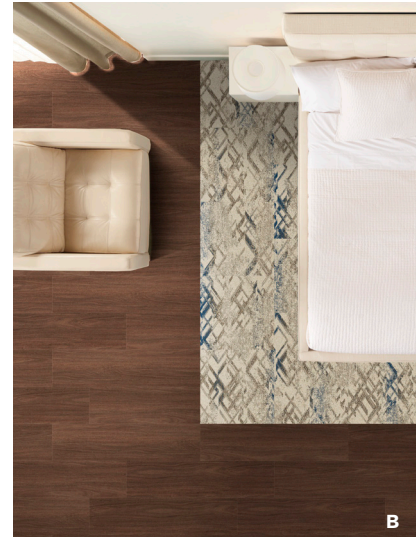
PLAY WITH YOUR UNIQUE COLOR SCHEME: Contact your local Account Executive and start designing.

CUSTOM COLOR

Take your pattern selection one step further and think: How do you want your guests to feel?

Cozy? Relaxed? Energized?

Color can transform the experience of a room. To make your chosen rug pattern more unique, consider an accent color at varying levels of saturation. The Interface product design team will help you determine the right amount of color infusion. Then, they will provide physical samples and a mock-up to show you how the product looks on the floor .



Guestroom Products	Marriott Spec. #	Custom #	Size	Installation
LVT Textured Woodgrains	309649	A00202 Madagascar	25cm x 1m	Random Ashlar
Custom Rug Option A		268400-069	50cm x 50cm	Ashlar
Custom Rug Option B		268400-064	50cm x 50cm	Ashlar
Custom Rug Option C		268400-060	50cm x 50cm	Ashlar
Custom Rug Option D		268400-066	50cm x 50cm	Ashlar
Custom Rug Option E		268400-067	50cm x 50cm	Ashlar

Installation Specifications	Marriott Spec.#	Description
XL2000 PLUS Adhesive		Double stick install with seam sealer in wet locations
Selitbloc LVT Underlayment	276822	Underlayment for entire room with carpet and LVT system

*Acoustical underlayment is required with the LVT.

**Refer to Page #4 for additional LVT selections.

Neuhaus – Honed & Weave Prototype Order Information

CONTACT: Sofia Davila sofia.davila@interface.com | 347.633.0577 or your local Account Executive



Carpet tiles save approximately 18-20% in product waste verses broadloom, based on prototype layout.

No Pad Required

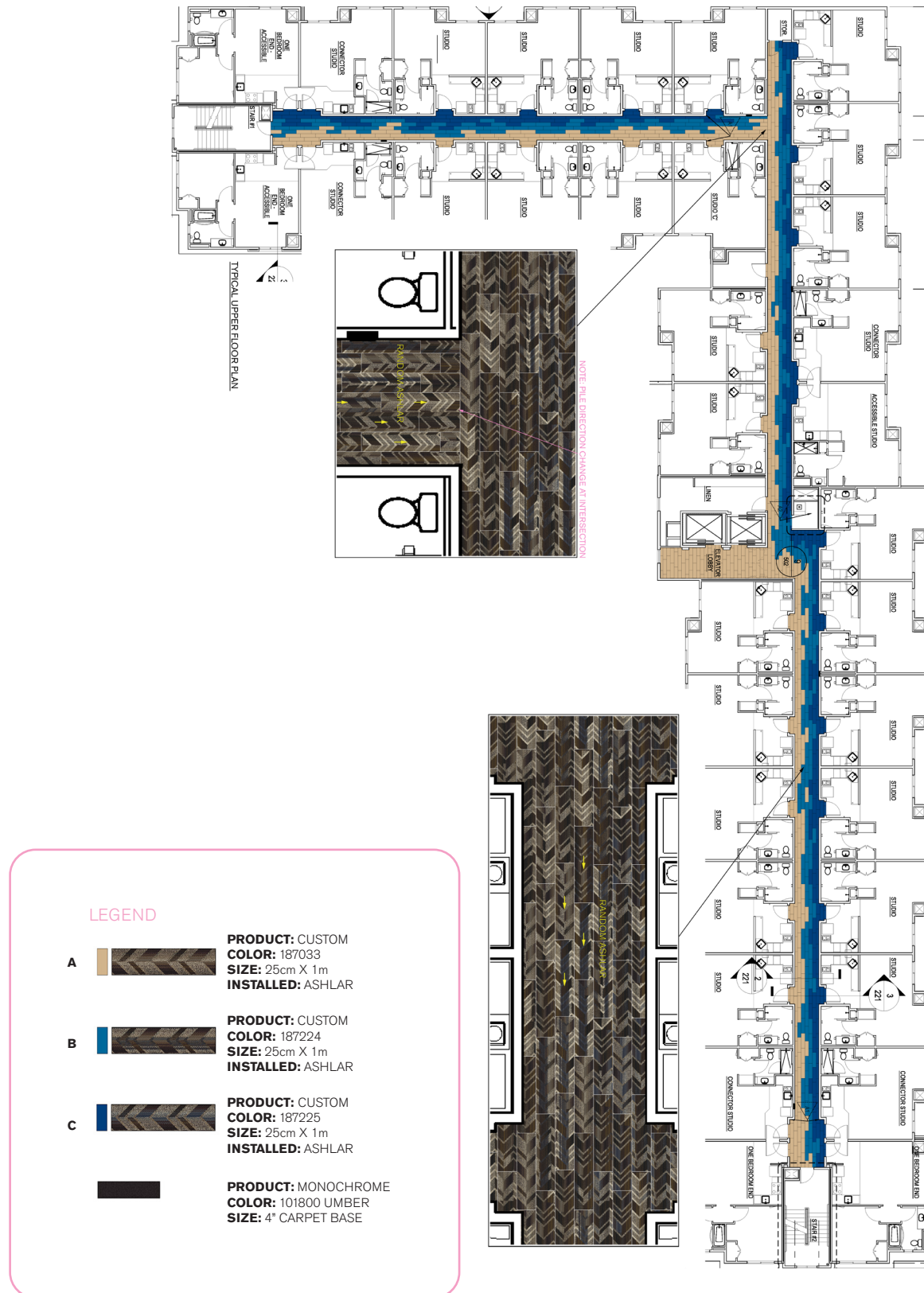
Corridor Products	Marriott Spec. #	Sample #	Color #	Size	Installation
Custom A Cut Above A	281762	256387-182	187033	25cm x 1m	Random Ashlar
Custom A Cut Above B	290142	256387-193	187224	25cm x 1m	Random Ashlar
Custom A Cut Above C	290143	256387-195	187225	25cm x 1m	Random Ashlar
Monochrome 4" Base	281756	101800 Umber		4" x 25' Rolls	

Installation Specifications	Marriott Spec.#	Description
TacTiles for Installation (500 TacTiles/Roll)	250475	60sq yds/ Roll Adhesive
Pad / Underlayment	NOT REQUIRED	

CORRIDOR INSTALLATION PLAN

Interface Hospitality

All quantities are estimates only and are based on plans provided. Site measurements and field verifications are recommended to ensure accuracy. These quantities are not intended to be used for material ordering purposes. Since waste factors may vary by installer, actual ordering quantities are the responsibility of your flooring contractor



Timeless Comfort Prototype Order Information

CONTACT: Sofia Davila sofia.davila@interface.com | 347.633.0577 or your local Account Executive



Guestroom Products	Marriott Spec. #	Kit #	Color #	Size	Installation
Custom 267506-071	301009		188074	50cm x 50cm	Ashlar
Area Rug Kit	301015	98.1110.34	188074	13'-1.5 x 5'-9"	Ashlar
Textured Woodgrains			A00406 Antique Light Oak	25cm x 1m	Ashlar

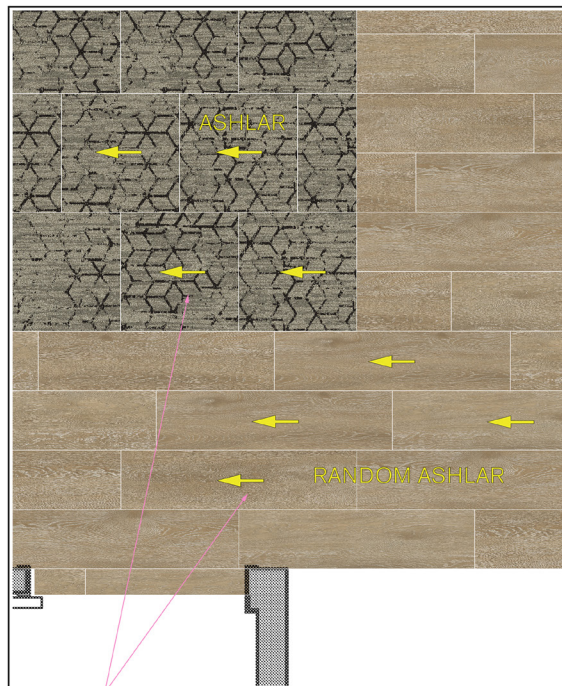
Installation Specifications	Marriott Spec.#	Description
XL2000 PLUS Adhesive		Double stick install
Selitbloc LVT Underlayment	276822	Underlayment for entire room with carpet and LVT system

*Pad not required with carpet tile but acoustical underlayment is required with the LVT and carpet tile system

GUESTROOM INSTALLATION PLAN

Interface Hospitality

All quantities are estimates only and are based on plans provided. Site measurements and field verifications are recommended to ensure accuracy. These quantities are not intended to be used for material ordering purposes. Since waste factors may vary by installer, actual ordering quantities are the responsibility of your flooring contractor



NOTE: PILE DIRECTION

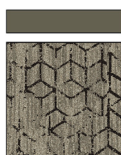
LEGEND

A

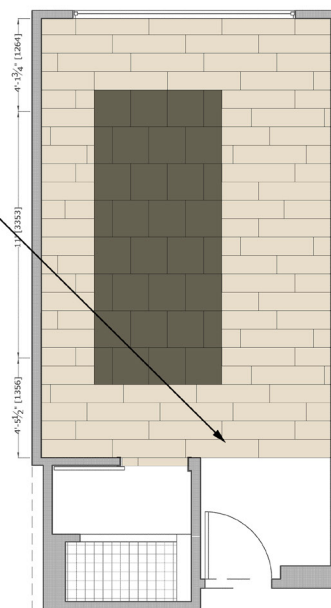


PRODUCT: TEXTURED WOODGRAINS
COLOR: A00406 ANTIQUE LIGHT OAK
SIZE: 25cm X 1m
INSTALLED: ASHLAR

B



PRODUCT: CUSTOM
COLOR: 188074
SIZE: 50cm
INSTALLED: ASHLAR



4 FINISH PLAN
SCALE AS NOTED

Timeless Comfort Prototype Order Information

CONTACT: Sofia Davila sofia.davila@interface.com | 347.633.0577 or your local Account Executive



Guestroom Products	Marriott Spec. #	Kit #	Color #	Size	Installation
Custom 267506-094	301013		188329	50cm x 50cm	Ashlar
Area Rug Kit	301017	98.1110.35	188329	13'-1.5" x 5'-9"	Ashlar
Textured Woodgrains			A00406 Antique Light Oak	25cm x 1m	Ashlar

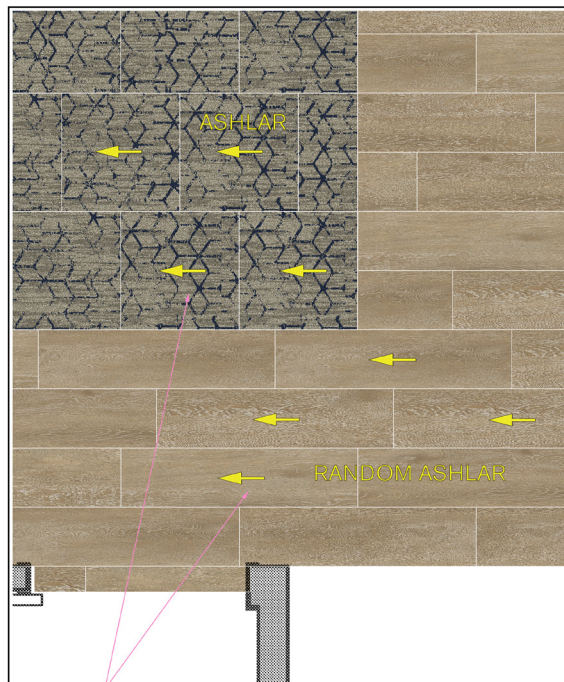
Installation Specifications	Marriott Spec.#	Description
XL2000 PLUS Adhesive		Double stick install
Selitbloc LVT Underlayment	276822	Underlayment for entire room with carpet and LVT system

*Pad not required with carpet tile but acoustical underlayment is required with the LVT and carpet tile system

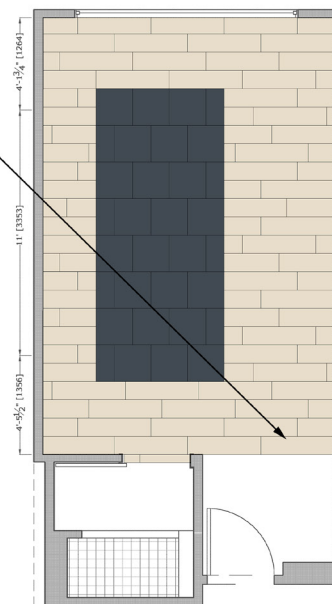
GUESTROOM INSTALLATION PLAN

Interface Hospitality

All quantities are estimates only and are based on plans provided. Site measurements and field verifications are recommended to ensure accuracy. These quantities are not intended to be used for material ordering purposes. Since waste factors may vary by installer, actual ordering quantities are the responsibility of your flooring contractor



NOTE: PILE DIRECTION



4 FINISH PLAN
SCALE AS NOTED

LEGEND



Timeless Comfort Prototype Order Information

CONTACT: Sofia Davila sofia.davila@interface.com | 347.633.0577 or your local Account Executive



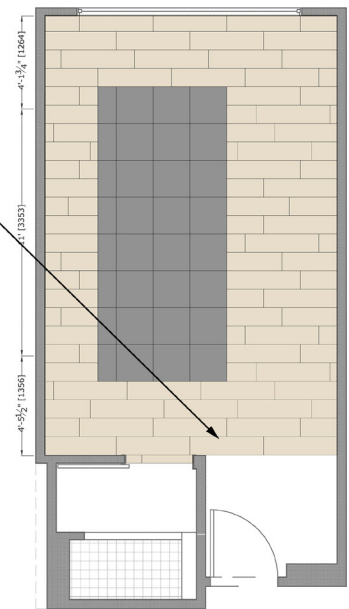
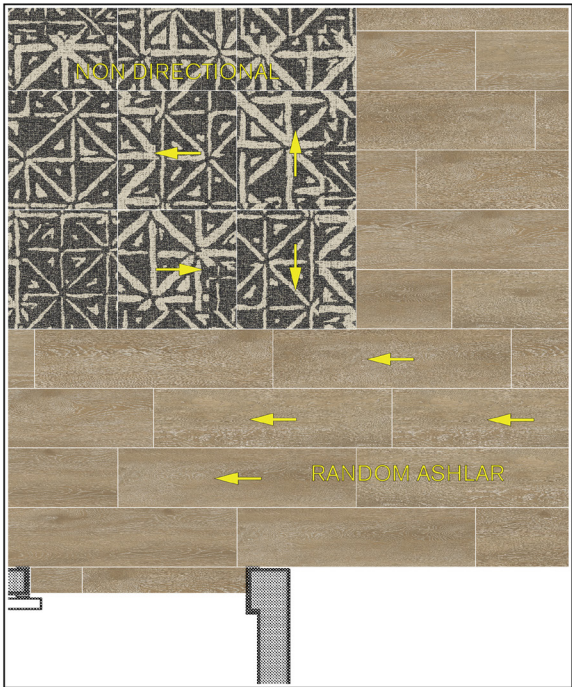
Guest Room Products	Marriott Spec. #	Kit #	Color #	FLOR #	Size	Installation
Yabara	308086		104972 Iron	21-1426	50cm x 50cm	Non Directional
Area Rug Kit	308090	98.1110.41	104972 Iron	21-1426	13'-1.5" x 5'-9"	Non Directional
Textured Woodgrains			A00406 Antique Light Oak		25cm x 1m	Ashlar

Installation Specifications	Marriott Spec. #	Description
XL2000 PLUS Adhesive		Double stick install
Selitbloc LVT Underlayment	276822	Underlayment for entire room with carpet and LVT system

*Pad not required with carpet tile but acoustical underlayment is required with the LVT and carpet tile system

GUESTROOM INSTALLATION PLAN

All quantities are estimates only and are based on plans provided. Site measurements and field verifications are recommended to ensure accuracy. These quantities are not intended to be used for material ordering purposes. Since waste factors may vary by installer, actual ordering quantities are the responsibility of your flooring contractor



A

B

PRODUCT: TEXTURED WOODGRAINS
COLOR: A00406 ANTIQUE LIGHT OAK
SIZE: 25cm X 1m
INSTALLED: ASHLAR

PRODUCT: YABARA
COLOR: 104972 IRON
FLOOR #: 21-1426
SIZE: 50cm
INSTALLED: ASHLAR

4 FINISH PLAN
SCALE AS NOTED

INTERFACE HOSPITALITY SALES REPRESENTATIVE sofia.davila@interface.com

Real Living Guestroom Prototype Order Information

CONTACT: Sofia Davila sofia.davila@interface.com | 347.633.0577 or your local Account Executive



Entry, Kitchen, Bath, Guestroom Products	Marriott Spec. #	Color #	Size	Installation
Textured Woodgrains A	282981	A00406 Antique Light Oak	25cm x 1m	Random Ashlar
Custom B	303769	188538	50cm x 50cm	Ashlar
Monochrome 4" Base	303773	101837 Granite		
Installation Specifications	Marriott Spec.#	Description		
TacTiles for Installation (500 TacTiles/Roll)	250475	60sq yds/Roll Adhesive		
XL2000 Plus Adhesive		Double stick install		
Selitbloc LVT Underlayment	276822	Underlayment for entire room with carpet and LVT system		

*Pad not required with carpet tile but acoustical underlayment is required with the LVT and carpet tile system

GUESTROOM INSTALLATION PLAN

Interface Hospitality

All quantities are estimates only and are based on plans provided. Site measurements and field verifications are recommended to ensure accuracy. These quantities are not intended to be used for material ordering purposes. Since waste factors may vary by installer, actual ordering quantities are the responsibility of your flooring contractor

