

Interface®

FOUR POINTS



APPROVED PROTOTYPES

Aloft Hotels
Courtyard
Delta Hotels
Element
Fairfield Inn & Suites
Four Points
Marriott Hotels
Residence Inn
Sheraton
TownePlace Suites

WHY INTERFACE HOSPITALITY?

Interface Hospitality is a **MARRIOTT INTERNATIONAL** approved supplier of carpet tile and LVT. We are currently approved on the following prototypes:

- Aloft Hotels
- Courtyard
- Delta Hotels
- Element
- Fairfield Inn & Suites
- Four Points
- Marriott Hotels
- Residence Inn
- Sheraton
- TownePlace Suites



SMART, EFFICIENT, AND BUILT TO LAST

Seamless Installation & Design Flexibility

Interface modular flooring tiles are designed for effortless installation with systems like TacTiles®—our no-glue solution that reduces VOCs and waste. Choose from multiple sizes and patterns to create tailored designs that fit your needs while optimizing material usage.

Cost Efficiency, Built-In

Reduce hidden costs with modular tiles—no roll sizes, no wasteful cuts, and an average of only 3-4% waste compared to broadloom's 14%. Our selective replacement system minimizes disruption, allowing you to replace flooring in stages and save up to 50% on replacement costs.

Durability You Can Count On

Every product is backed by a 15-year warranty, combining innovative features like Intersept® mold protection and Protekt2™ stain resistance for unparalleled longevity. With modular carpet, you're investing in a solution that performs and saves in the long run.



DESIGNED FOR PERFORMANCE AND PEOPLE

Innovative Fibers for Vibrant, Sustainable Style

All Interface carpet tiles are made from 100% solution-dyed nylon—engineered for vibrant, fade-resistant color without the need for water or harmful chemicals in production.

The Power of Integrated Systems

Interface tiles span a variety of sizes and textures, enabling endless creative possibilities. Our modular designs seamlessly integrate with LVT for holistic flooring solutions without transition strips, redefining design flexibility.

Health-Conscious Choices

Our Intersept® treatment guarantees mold protection and uses no halogens, heavy metals, or harmful chemicals. It's EPA-approved for safe use, ensuring healthier spaces for your guests and teams.

SUSTAINABILITY & END-OF-LIFE SOLUTIONS

Transparency at Every Step

Sustainability comes standard. With third-party certifications and 99% renewable energy powering our U.S. manufacturing, Interface delivers flooring that's both high-performing and environmentally conscious.

Recycling Made Simple with ReEntry®

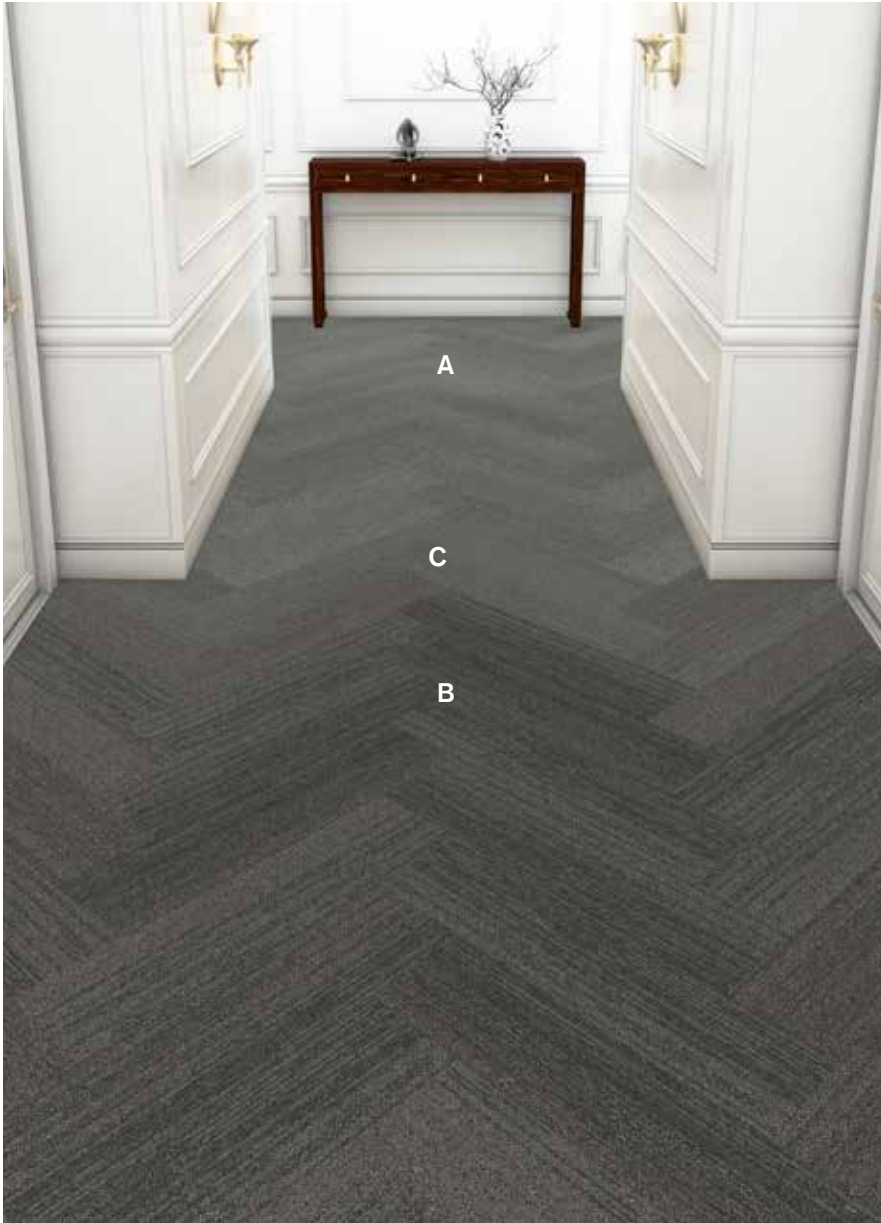
Through ReEntry®, we reclaim and recycle used carpet tiles and Sound Choice™ LVT, keeping valuable materials out of landfills. As North America's only third-party-certified flooring recycling program, we set the benchmark for responsible end-of-life solutions.

Smarter Installations for a Smaller Footprint

TacTiles® eliminate the need for adhesives with carpet tiles, cutting installation waste by 90%. Combined with modular flooring's reduced waste profile, this innovation ensures your project leaves a lighter environmental footprint.

VINTAGE MODERN CORRIDOR PROTOTYPE ORDER INFORMATION

Carpet tiles **SAVE APPROXIMATELY 18%-20% IN PRODUCT WASTE** versus broadloom, based on prototype layout.

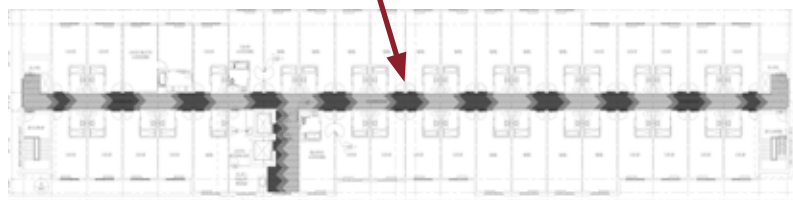
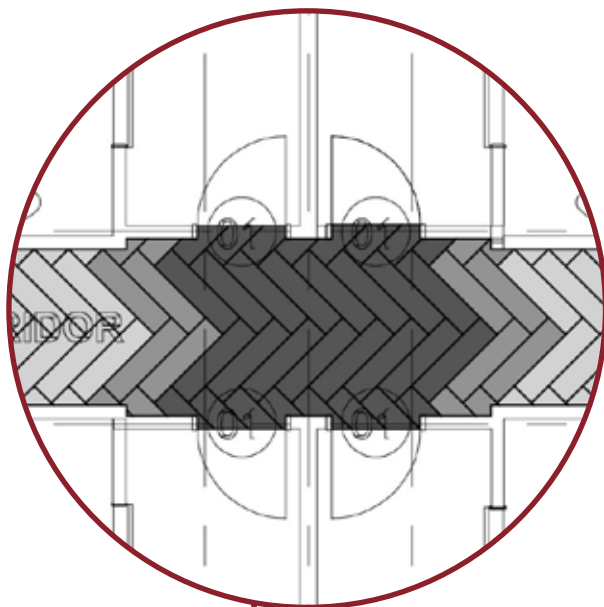


PRODUCT	CONTROL#	ITEM#	COLOR#	SIZE	INSTALLATION
A Harmonize	PG-001ALT2A	275327	104041 Iceberg	25 cm x 1 m	Herringbone
B Harmonize	PG-001ALT2B	283444	104043 Gravel	25 cm x 1 m	Herringbone
C Harmonize	PG-001ALT2C	283445	104044 Pewter	25 cm x 1 m	Herringbone

INSTALLATION SPECIFICATIONS	DESCRIPTION
XL2000 PLUS Adhesive	Double stick install

VINTAGE MODERN CORRIDOR INSTALLATION PLAN

All quantities are estimates only and are based on plans provided. Site measurements and field verifications are recommended to ensure accuracy. These quantities are not intended to be used for material ordering purposes. Since waste factors may vary by installer, actual ordering quantities are the responsibility of your flooring contractor.



LEGEND

A



PRODUCT: Harmonize
CONTROL: PG-001ALT2A
ITEM: 275327
COLOR: 104041 Iceberg
SIZE: 25 cm x 1 m
INSTALLED: Herringbone

B



PRODUCT: Harmonize
CONTROL: PG-001ALT2B
ITEM: 283444
COLOR: 104043 Gravel
SIZE: 25 cm x 1 m
INSTALLED: Herringbone

C



PRODUCT: Harmonize
CONTROL: PG-001ALT2C
ITEM: 283445
COLOR: 104044 Pewter
SIZE: 25 cm x 1 m
INSTALLED: Herringbone

VINTAGE MODERN GUESTROOM PROTOTYPE ORDER INFORMATION

Carpet tiles **SAVE APPROXIMATELY 18%-20% IN PRODUCT WASTE** versus broadloom, based on prototype layout.



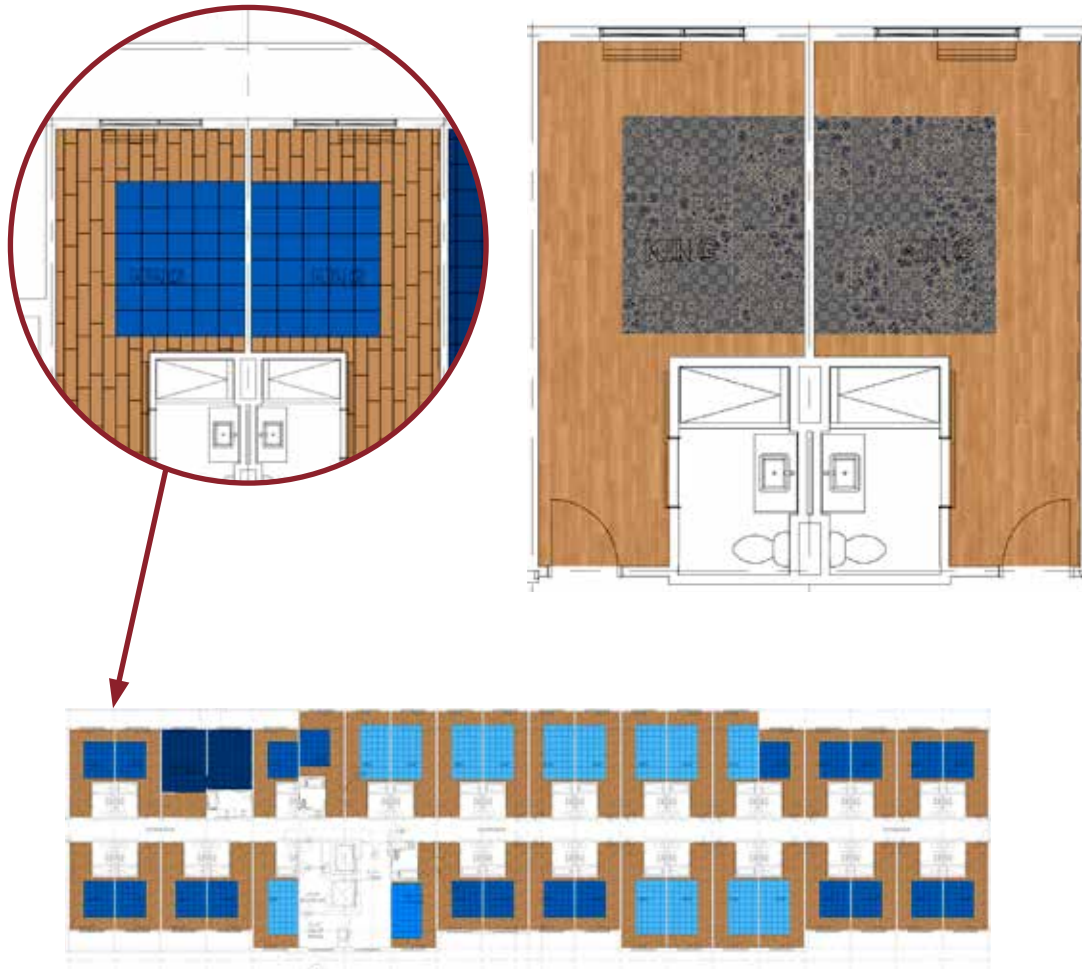
PRODUCT	KIT#	CONTROL#	ITEM#	COLOR#	SAMPLE#	SIZE	INSTALLATION
A LVT Natural Woodgrains		RF-100-ALT2	283403	A00212 Cedar		25 cm x 1 m	Ashlar
B Asteria		X-001ALT3	274963	186254	263115-037	50 cm x 50 cm	Non Directional
Area Rug Kit	98.1110.10	X-001ALT3K	284388	186254	263115-037	9'10" x 8'2"	Non Directional
Area Rug Kit	98.1110.11	X-001ALT3AQ	284390	186254	263115-037	14'9" x 8'2"	Non Directional
Area Rug Kit	98.1110.12	X-001ALT3Q	284389	186254	263115-037	14'9" x 8'2"	Non Directional

**Scene represents QQ guestroom.*

INSTALLATION SPECIFICATIONS	CONTROL#	ITEM#	DESCRIPTION
XL Brands 2000 Plus Adhesive			Double stick install
Selittbloc Underlayment	RF-100X-ALT2	276822	Underlayment for entire room with carpet and LVT system

VINTAGE MODERN GUESTROOM INSTALLATION PLAN

All quantities are estimates only and are based on plans provided. Site measurements and field verifications are recommended to ensure accuracy. These quantities are not intended to be used for material ordering purposes. Since waste factors may vary by installer, actual ordering quantities are the responsibility of your flooring contractor.



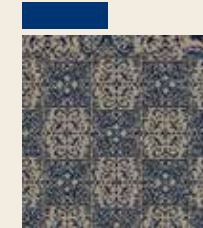
LEGEND

A



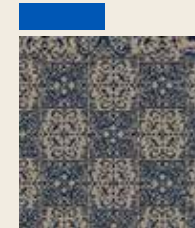
PRODUCT: LVT Natural Woodgrains
CONTROL: RF-100-ALT2
ITEM: 283403
COLOR: A00212 Cedar
SIZE: 25 cm x 1 m
INSTALLED: Ashlar

B



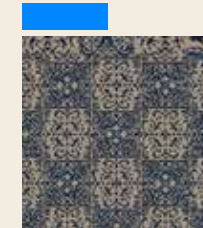
PRODUCT: Asteria
CONTROL: X-001ALT3
ITEM: 274963
COLOR/SAMPLE: 186254_263115-037
SIZE: 50 cm x 50 cm
INSTALLED: Non Directional

B



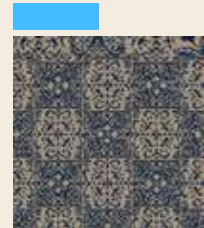
PRODUCT: Asteria
CONTROL: X-001ALT3K
ITEM: 284388
COLOR/SAMPLE: 186254_263115-037
SIZE: 50 cm x 50 cm
INSTALLED: Non Directional

B



PRODUCT: Asteria
CONTROL: X-001ALT3AQ
ITEM: 284390
COLOR/SAMPLE: 186254_263115-037
SIZE: 50 cm x 50 cm
INSTALLED: Non Directional

B



PRODUCT: Asteria
CONTROL: X-001ALT3Q
ITEM: 284389
COLOR/SAMPLE: 186254_263115-037
SIZE: 50 cm x 50 cm
INSTALLED: Non Directional