

Interface®

# ELEMENT



## APPROVED PROTOTYPES

- Aloft Hotels
- Courtyard
- Delta Hotels
- Element
- Fairfield Inn & Suites
- Four Points
- Marriott Hotels
- Residence Inn
- Sheraton
- TownePlace Suites

# WHY INTERFACE HOSPITALITY?

Interface Hospitality is a **MARRIOTT INTERNATIONAL** approved supplier of carpet tile and LVT. We are currently approved on the following prototypes:

- Aloft Hotels
- Courtyard
- Delta Hotels
- Element
- Fairfield Inn & Suites
- Four Points
- Marriott Hotels
- Residence Inn
- Sheraton
- TownePlace Suites



## SMART, EFFICIENT, AND BUILT TO LAST

### Seamless Installation & Design Flexibility

Interface modular flooring tiles are designed for effortless installation with systems like TacTiles®—our no-glue solution that reduces VOCs and waste. Choose from multiple sizes and patterns to create tailored designs that fit your needs while optimizing material usage.

### Cost Efficiency, Built-In

Reduce hidden costs with modular tiles—no roll sizes, no wasteful cuts, and an average of only 3-4% waste compared to broadloom's 14%. Our selective replacement system minimizes disruption, allowing you to replace flooring in stages and save up to 50% on replacement costs.

### Durability You Can Count On

Every product is backed by a 15-year warranty, combining innovative features like Intersept® mold protection and Protekt2™ stain resistance for unparalleled longevity. With modular carpet, you're investing in a solution that performs and saves in the long run.



## DESIGNED FOR PERFORMANCE AND PEOPLE

### Innovative Fibers for Vibrant, Sustainable Style

All Interface carpet tiles are made from 100% solution-dyed nylon—engineered for vibrant, fade-resistant color without the need for water or harmful chemicals in production.

### The Power of Integrated Systems

Interface tiles span a variety of sizes and textures, enabling endless creative possibilities. Our modular designs seamlessly integrate with LVT for holistic flooring solutions without transition strips, redefining design flexibility.

### Health-Conscious Choices

Our Intersept® treatment guarantees mold protection and uses no halogens, heavy metals, or harmful chemicals. It's EPA-approved for safe use, ensuring healthier spaces for your guests and teams.

## SUSTAINABILITY & END-OF-LIFE SOLUTIONS

### Transparency at Every Step

Sustainability comes standard. With third-party certifications and 99% renewable energy powering our U.S. manufacturing, Interface delivers flooring that's both high-performing and environmentally conscious.

### Recycling Made Simple with ReEntry®

Through ReEntry®, we reclaim and recycle used carpet tiles and Sound Choice™ LVT, keeping valuable materials out of landfills. As North America's only third-party-certified flooring recycling program, we set the benchmark for responsible end-of-life solutions.

### Smarter Installations for a Smaller Footprint

TacTiles® eliminate the need for adhesives with carpet tiles, cutting installation waste by 90%. Combined with modular flooring's reduced waste profile, this innovation ensures your project leaves a lighter environmental footprint.

## ENLIVEN GUESTROOM PROTOTYPE ORDER INFORMATION

Carpet tiles **SAVE APPROXIMATELY 18%-20% IN PRODUCT WASTE** verses broadloom, based on prototype layout.



PRODUCT	KIT#	CONTROL#	ITEM#	COLOR#	SAMPLE#	SIZE	INSTALLATION
<b>A</b> LVT Natural Woodgrains		X-010	277944	A00203 Chesnut		25 cm x 1 m	Ashlar
<b>B</b> RMS102		X-001ALT1	274268	183657	260688-038	50 cm x 50 cm	Brick
<b>Area Rug Kit</b>	98.1110.09	X-005ALT1	274269	183657	260688-038	6'6" X 8'2"	Brick
<b>Area Rug Kit</b>	98.1110.13	X-007ALT1	286295	183657	260688-038	12'6" x 8'6"	Brick

*\*Scene represents guestroom*

INSTALLATION SPECIFICATIONS	CONTROL#	ITEM#	DESCRIPTION
XL Brands 2000 Plus Adhesive			Double stick install
Selittbloc Underlayment	X-011	276822	Underlayment for entire room with carpet and LVT system

## ENLIVEN GUESTROOM INSTALLATION PLAN

All quantities are estimates only and are based on plans provided. Site measurements and field verifications are recommended to ensure accuracy. These quantities are not intended to be used for material ordering purposes. Since waste factors may vary by installer, actual ordering quantities are the responsibility of your flooring contractor.



## LEGEND

**A**



**PRODUCT:** LVT Natural Woodgrains  
**CONTROL:** X-010  
**ITEM:** 277944  
**COLOR/SAMPLE:** A00203 Chesnut  
**SIZE:** 25 cm x 1 m  
**INSTALLED:** Ashlar

**B**



**PRODUCT:** RMS102  
**CONTROL:** X-001ALT1  
**ITEM:** 274268  
**COLOR/SAMPLE:** 183657\_260688-038  
**SIZE:** 50 cm x 50 cm  
**INSTALLED:** Brick

**B**



**PRODUCT:** RMS102  
**CONTROL:** X-005ALT1  
**ITEM:** 274269  
**COLOR/SAMPLE:** 183657\_260688-038  
**SIZE:** 50 cm x 50 cm  
**INSTALLED:** Brick

**B**



**PRODUCT:** RMS102  
**CONTROL:** X-007ALT1  
**ITEM:** 286295  
**COLOR/SAMPLE:** 183657\_260688-038  
**SIZE:** 50 cm x 50 cm  
**INSTALLED:** Brick

## ENLIVEN CORRIDOR PROTOTYPE ORDER INFORMATION

Carpet tiles **SAVE APPROXIMATELY 18%-20% IN PRODUCT WASTE** versus broadloom, based on prototype layout.

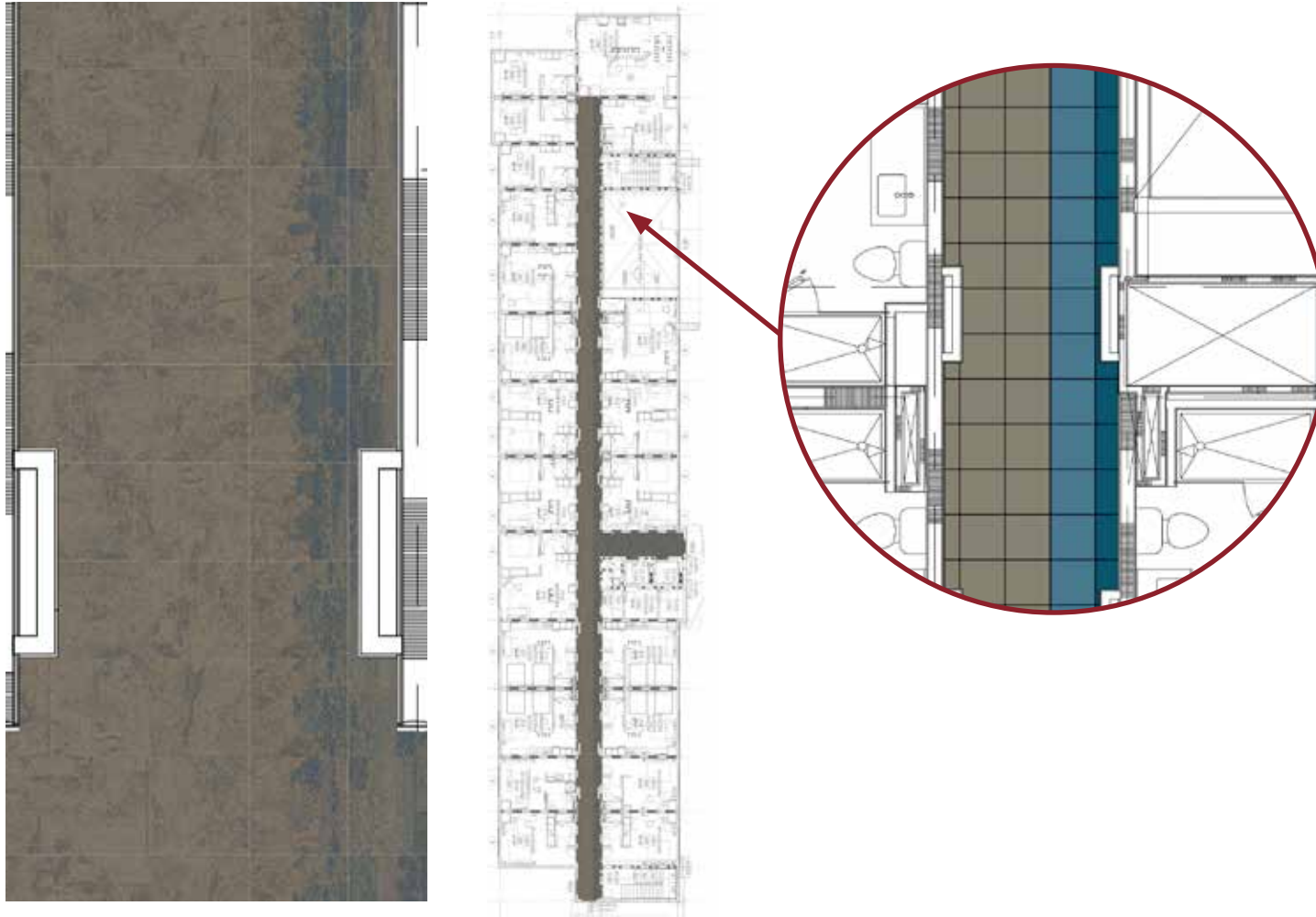


PRODUCT	CONTROL#	ITEM#	COLOR#	SAMPLE#	SIZE	INSTALLATION
<b>A</b> B603	PG-005ALT1A	296913	188965	267390-055	50 cm x 50 cm	Non Directional
<b>B</b> Custom	PG-005ALT1B	297026	188011	267390-059	50 cm x 50 cm	Pattern by Tile
<b>C</b> Deep Impressions	PG-005ALT1C	297027	188966	267390-058	50 cm x 50 cm	Monolithic

INSTALLATION SPECIFICATIONS	DESCRIPTION
XL2000 PLUS Adhesive	Double stick install

## ENLIVEN CORRIDOR INSTALLATION PLAN

All quantities are estimates only and are based on plans provided. Site measurements and field verifications are recommended to ensure accuracy. These quantities are not intended to be used for material ordering purposes. Since waste factors may vary by installer, actual ordering quantities are the responsibility of your flooring contractor.



## LEGEND

A



**PRODUCT:** B603  
**CONTROL:** PG-005ALT1A  
**ITEM:** 296913  
**COLOR/SAMPLE:** 188965\_267390-055  
**SIZE:** 50 cm x 50 cm  
**INSTALLED:** Non Directional

B



**PRODUCT:** Custom  
**CONTROL:** PG-005ALT1B  
**ITEM:** 297026  
**COLOR/SAMPLE:** 188011\_267390-059  
**SIZE:** 50 cm x 50 cm  
**INSTALLED:** Pattern by Tile

C



**PRODUCT:** Deep Impressions  
**CONTROL:** PG-005ALT1C  
**ITEM:** 297027  
**COLOR/SAMPLE:** 188966\_267390-058  
**SIZE:** 50 cm x 50 cm  
**INSTALLED:** Monolithic

## ENLIVEN LOUNGE PROTOTYPE ORDER INFORMATION

Carpet tiles **SAVE APPROXIMATELY 18%-20% IN PRODUCT WASTE** versus broadloom, based on prototype layout.

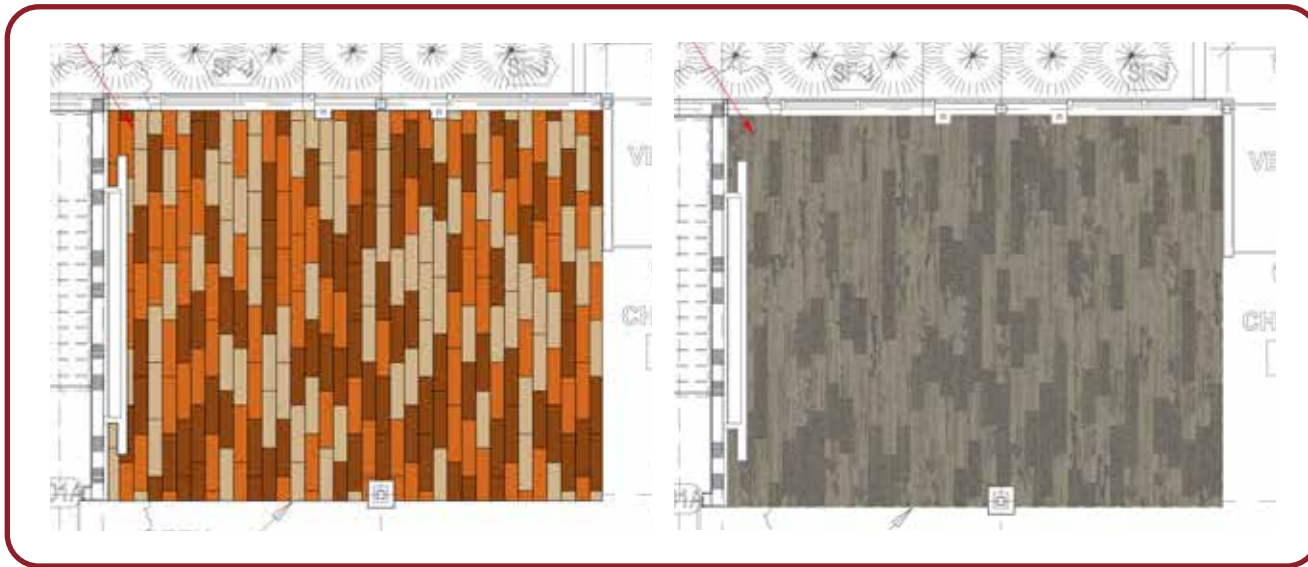


PRODUCT	CONTROL#	ITEM#	COLOR#	SIZE	INSTALLATION
A HN810	LM-001A	278008	104218 Shale	25 cm x 1 m	Ashlar
B HN840	LM-001B	278013	104226 Shale	25 cm x 1 m	Ashlar
C HN850	LM-001C	278012	104210 Shale	25 cm x 1 m	Ashlar

INSTALLATION SPECIFICATIONS	CONTROL#	ITEM#	DESCRIPTION
XL Brands 2000 Plus Adhesive			Double stick install

## ENLIVEN LOUNGE INSTALLATION PLAN

All quantities are estimates only and are based on plans provided. Site measurements and field verifications are recommended to ensure accuracy. These quantities are not intended to be used for material ordering purposes. Since waste factors may vary by installer, actual ordering quantities are the responsibility of your flooring contractor.



## LEGEND

**A**



**PRODUCT:** HN810  
**CONTROL:** LM-001A  
**ITEM:** 278008  
**COLOR:** 104218 Shale  
**SIZE:** 25 cm x 1 m  
**INSTALLED:** Ashlar

**B**



**PRODUCT:** HN840  
**CONTROL:** LM-001B  
**ITEM:** 278013  
**COLOR:** 104226 Shale  
**SIZE:** 25 cm x 1 m  
**INSTALLED:** Ashlar

**C**



**PRODUCT:** HN850  
**CONTROL:** LM-001C  
**ITEM:** 278012  
**COLOR:** 104210 Shale  
**SIZE:** 25 cm x 1 m  
**INSTALLED:** Ashlar

## ENLIVEN MEETING ROOM AND ADMIN OFFICES PROTOTYPE ORDER INFORMATION

Carpet tiles **SAVE APPROXIMATELY 18%-20% IN PRODUCT WASTE** versus broadloom, based on prototype layout.

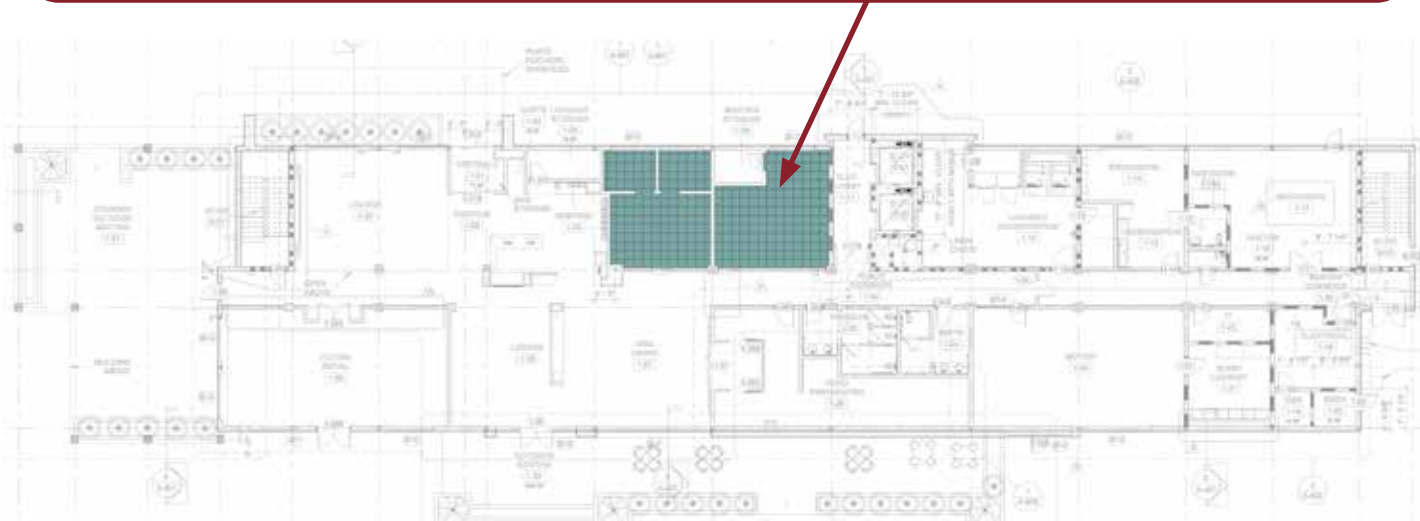
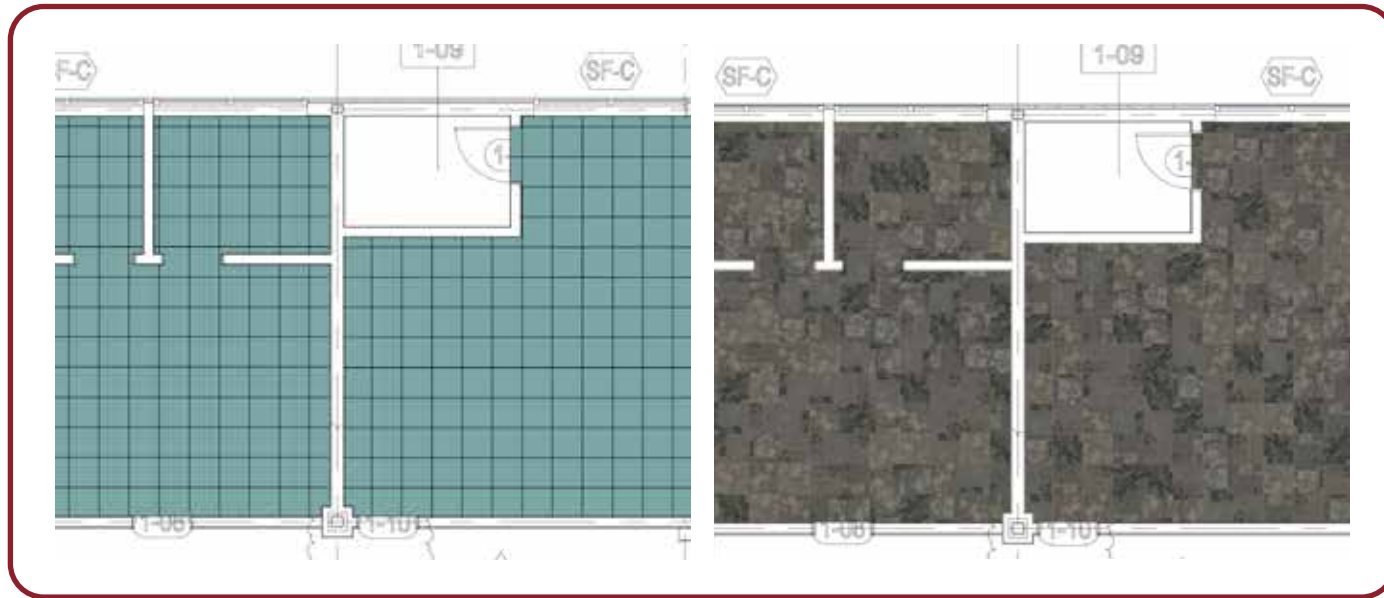


PRODUCT	CONTROL#	ITEM#	COLOR#	SIZE	INSTALLATION
Raw	MR-001 & OA-001	278014	101054 Urban	50 cm x 50 cm	Non Directional

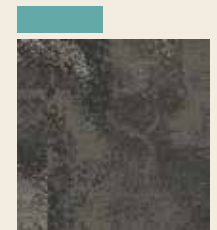
INSTALLATION SPECIFICATIONS	CONTROL#	ITEM#	DESCRIPTION
XL Brands 2000 Plus Adhesive			Double stick install

## ENLIVEN MEETING ROOM AND ADMIN OFFICES INSTALLATION PLAN

All quantities are estimates only and are based on plans provided. Site measurements and field verifications are recommended to ensure accuracy. These quantities are not intended to be used for material ordering purposes. Since waste factors may vary by installer, actual ordering quantities are the responsibility of your flooring contractor.



### LEGEND



**PRODUCT:** Raw  
**CONTROL:** MR-001 & QA-001  
**ITEM:** 278014  
**COLOR:** 101054 Urban  
**SIZE:** 50 cm x 50 cm  
**INSTALLED:** Non Directional