

Interface®

ALOFT



APPROVED PROTOTYPES

Aloft Hotels
Courtyard
Delta Hotels
Element
Fairfield Inn & Suites
Four Points
Marriott Hotels
Residence Inn
Sheraton
TownePlace Suites

WHY INTERFACE HOSPITALITY?

Interface Hospitality is a **MARRIOTT INTERNATIONAL** approved supplier of carpet tile and LVT. We are currently approved on the following prototypes:

- Aloft Hotels
- Courtyard
- Delta Hotels
- Element
- Fairfield Inn & Suites
- Four Points
- Marriott Hotels
- Residence Inn
- Sheraton
- TownePlace Suites



SMART, EFFICIENT, AND BUILT TO LAST

Seamless Installation & Design Flexibility

Interface modular flooring tiles are designed for effortless installation with systems like TacTiles®—our no-glue solution that reduces VOCs and waste. Choose from multiple sizes and patterns to create tailored designs that fit your needs while optimizing material usage.

Cost Efficiency, Built-In

Reduce hidden costs with modular tiles—no roll sizes, no wasteful cuts, and an average of only 3-4% waste compared to broadloom's 14%. Our selective replacement system minimizes disruption, allowing you to replace flooring in stages and save up to 50% on replacement costs.

Durability You Can Count On

Every product is backed by a 15-year warranty, combining innovative features like Intersept® mold protection and Protekt2™ stain resistance for unparalleled longevity. With modular carpet, you're investing in a solution that performs and saves in the long run.



DESIGNED FOR PERFORMANCE AND PEOPLE

Innovative Fibers for Vibrant, Sustainable Style

All Interface carpet tiles are made from 100% solution-dyed nylon—engineered for vibrant, fade-resistant color without the need for water or harmful chemicals in production.

The Power of Integrated Systems

Interface tiles span a variety of sizes and textures, enabling endless creative possibilities. Our modular designs seamlessly integrate with LVT for holistic flooring solutions without transition strips, redefining design flexibility.

Health-Conscious Choices

Our Intersept® treatment guarantees mold protection and uses no halogens, heavy metals, or harmful chemicals. It's EPA-approved for safe use, ensuring healthier spaces for your guests and teams.

SUSTAINABILITY & END-OF-LIFE SOLUTIONS

Transparency at Every Step

Sustainability comes standard. With third-party certifications and 99% renewable energy powering our U.S. manufacturing, Interface delivers flooring that's both high-performing and environmentally conscious.

Recycling Made Simple with ReEntry®

Through ReEntry®, we reclaim and recycle used carpet tiles and Sound Choice™ LVT, keeping valuable materials out of landfills. As North America's only third-party-certified flooring recycling program, we set the benchmark for responsible end-of-life solutions.

Smarter Installations for a Smaller Footprint

TacTiles® eliminate the need for adhesives with carpet tiles, cutting installation waste by 90%. Combined with modular flooring's reduced waste profile, this innovation ensures your project leaves a lighter environmental footprint.

CORRIDOR PROTOTYPE ORDER INFORMATION

Carpet tiles **SAVE APPROXIMATELY 18%-20% IN PRODUCT WASTE** verses broadloom, based on prototype layout.



PRODUCT	CONTROL#	ITEM#	COLOR#	SAMPLE#	SIZE	INSTALLATION
A Surreal	PG-005D	328177	190720	267549-099	50 cm x 50 cm	Pattern by Tile
B Duplex	PG-005A	328174	105891 Upper East		50 cm x 50 cm	Pattern by Tile
C Sublet	PG-005B	328175	105879 Upper East		50 cm x 50 cm	Pattern by Tile
D Online	PG-005C	328176	103788 Pepper		25 cm x 1 m	Pattern by Tile
E Online	PG-005F	328179	190718	267549-097	25 cm x 1 m	Pattern by Tile
F Online	PG-005E	328178	190719	267549-098	25 cm x 1 m	Pattern by Tile
G Online (<i>not shown</i>)	PG-005G	328180	192251	267549-215	25 cm x 1 m	Pattern by Tile

**Only included in Elevator Lobbies*

INSTALLATION SPECIFICATIONS	DESCRIPTION
XL2000 PLUS Adhesive	Double stick install

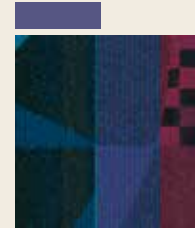
CORRIDOR INSTALLATION PLAN

All quantities are estimates only and are based on plans provided. Site measurements and field verifications are recommended to ensure accuracy. These quantities are not intended to be used for material ordering purposes. Since waste factors may vary by installer, actual ordering quantities are the responsibility of your flooring contractor.



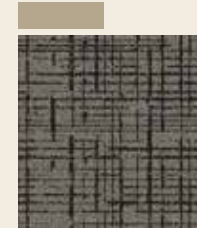
LEGEND

A



PRODUCT: Surreal M0555
CONTROL: PG-005D
ITEM: 328177
COLOR/SAMPLE: 190720 _267549-099
SIZE: 50 cm x 50 cm
INSTALLED: Pattern by Tile

B



PRODUCT: Duplex
CONTROL: PG-005A
ITEM: 328174
COLOR: 105891 Upper East
SIZE: 50 cm x 50 cm
INSTALLED: Pattern by Tile

C



PRODUCT: Sublet
CONTROL: PG-005B
ITEM: 328175
COLOR: 105879 Upper East
SIZE: 50 cm x 50 cm
INSTALLED: Pattern by Tile

D



PRODUCT: Online
CONTROL: PG-005C
ITEM: 328176
COLOR: 103788 Pepper
SIZE: 25 cm x 1 m
INSTALLED: Pattern by Tile

E



PRODUCT: Online
CONTROL: PG-005F
ITEM: 328179
COLOR/SAMPLE: 190718 _267549-097
SIZE: 25 cm x 1 m
INSTALLED: Pattern by Tile

F



PRODUCT: Online
CONTROL: PG-005E
ITEM: 328178
COLOR/SAMPLE: 190719 _267549-098
SIZE: 25 cm x 1 m
INSTALLED: Pattern by Tile

G



PRODUCT: Online
CONTROL: PG-005G
ITEM: 328180
COLOR: 192251
SAMPLE: 267549-215
SIZE: 25 cm x 1 m
INSTALLED: Pattern by Tile

ECLECTIC SCHEME/GENERIC GUESTROOM PROTOTYPE ORDER INFORMATION

Carpet tiles **SAVE APPROXIMATELY 18%-20% IN PRODUCT WASTE** versus broadloom, based on prototype layout.



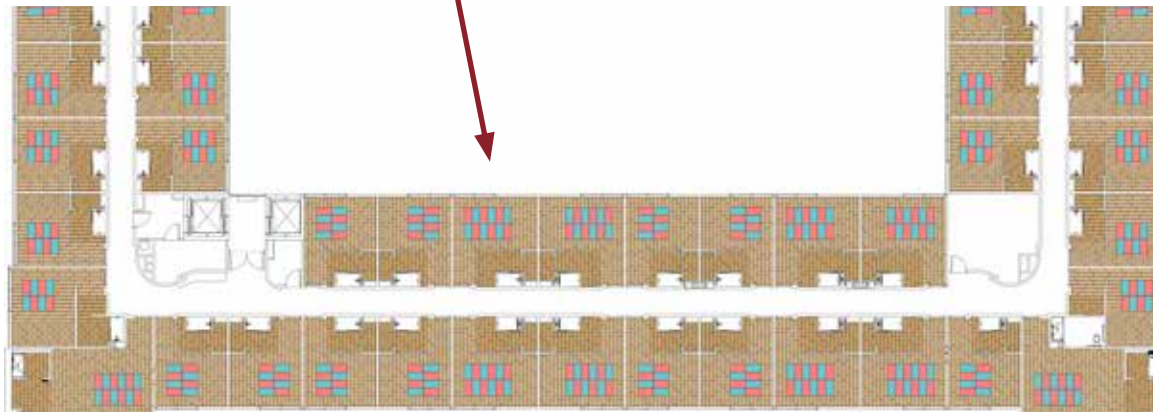
PRODUCT	KIT#	CONTROL#	ITEM#	COLOR#	SAMPLE#	SIZE	INSTALLATION
A LVT Natural Woodgrains		X-010	276813	A00207 Washed Wheat		25 cm x 1 m	Ashlar
*B Area Rug Kit	98.1110.24	X-004-GA-ALT1	299177			2 m x 2 m	Pattern by Tile
Custom				186696	265403-012		
Custom				188122	265403-185		
B Area Rug Kit	98.1110.25	X-005-GA-ALT1	299179			3 m x 2 m	Pattern by Tile
Custom				186696	265403-012		
Custom				188122	265403-185		

**Scene represents 2 m x 2 m rug kit.*

INSTALLATION SPECIFICATIONS	CONTROL#	ITEM#	DESCRIPTION
XL Brands 2000 Plus Adhesive			Double stick install
Selitbloc Underlayment	X-011	276822	Underlayment for entire room with carpet and LVT system

ECLECTIC SCHEME/GENERIC GUESTROOM INSTALLATION PLAN

All quantities are estimates only and are based on plans provided. Site measurements and field verifications are recommended to ensure accuracy. These quantities are not intended to be used for material ordering purposes. Since waste factors may vary by installer, actual ordering quantities are the responsibility of your flooring contractor.



LEGEND

A

DRY

WET



PRODUCT: LVT Natural Woodgrains
CONTROL: X-010
ITEM: 276813
COLOR: A00207 Washed Wheat
SIZE: 25 cm x 1 m
INSTALLED: Ashlar

B



PRODUCT: Custom
CONTROL: X-004-GA-ALT1
ITEM: 299177
COLOR/SAMPLE: 186696_265403-012
SIZE: 50 cm x 1 m
INSTALLED: Pattern by Tile

B



PRODUCT: Custom
CONTROL: X-004-GA-ALT1
ITEM: 299177
COLOR/SAMPLE: 188122_265403-185
SIZE: 50 cm x 1 m
INSTALLED: Pattern by Tile

ECLECTIC SCHEME/BIG GREEN GUESTROOM PROTOTYPE ORDER INFORMATION

Carpet tiles **SAVE APPROXIMATELY 18%-20% IN PRODUCT WASTE** versus broadloom, based on prototype layout.



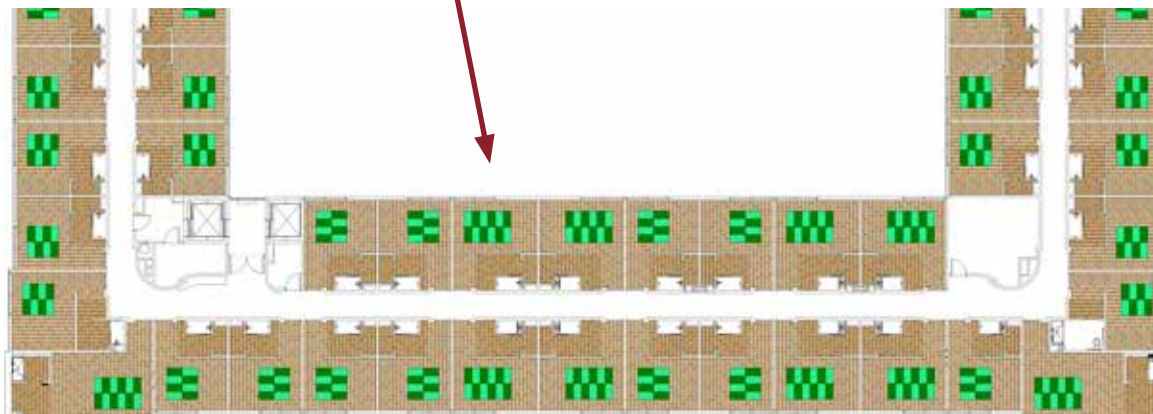
PRODUCT	KIT#	CONTROL#	ITEM#	COLOR#	SAMPLE#	SIZE	INSTALLATION
A LVT Natural Woodgrains		X-010	276813	A00207 Washed Wheat		25 cm x 1 m	Ashlar
*B Area Rug Kit	98.1110.22	X-004-BG-ALT2	299142			2 m x 2 m	Pattern by Tile
Custom				188124	265403-188		
Custom				188123	265403-187		
B Area Rug Kit	98.1110.23	X-005-GA-ALT2	299140			3 m x 2 m	Pattern by Tile
Custom				188124	265403-188		
Custom				188123	265403-187		

**Scene represents 2 m x 2 m rug kit.*

INSTALLATION SPECIFICATIONS	CONTROL#	ITEM#	DESCRIPTION
XL Brands 2000 Plus Adhesive			Double stick install
Selitbloc Underlayment	X-011	276822	Underlayment for entire room with carpet and LVT system

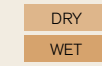
ECLECTIC SCHEME/BIG GREEN GUESTROOM INSTALLATION PLAN

All quantities are estimates only and are based on plans provided. Site measurements and field verifications are recommended to ensure accuracy. These quantities are not intended to be used for material ordering purposes. Since waste factors may vary by installer, actual ordering quantities are the responsibility of your flooring contractor.



LEGEND

A



PRODUCT: LVT Natural Woodgrains
CONTROL: X-010
ITEM: 276813
COLOR: A00207 Washed Wheat
SIZE: 25 cm x 1 m
INSTALLED: Ashlar

B



PRODUCT: Custom
CONTROL: X-004-BG-ALT2
ITEM: 299142
COLOR/SAMPLE: 188124_265403-188
SIZE: 50 cm x 1 m
INSTALLED: Pattern by Tile

C



PRODUCT: Custom
CONTROL: X-004_BG-ALT2
ITEM: 299142
COLOR/SAMPLE: 188122_265403-187
SIZE: 50 cm x 1 m
INSTALLED: Pattern by Tile

ECLECTIC SCHEME/ELECTRIC GRID GUESTROOM PROTOTYPE ORDER INFORMATION

Carpet tiles **SAVE APPROXIMATELY 18%-20% IN PRODUCT WASTE** versus broadloom, based on prototype layout.



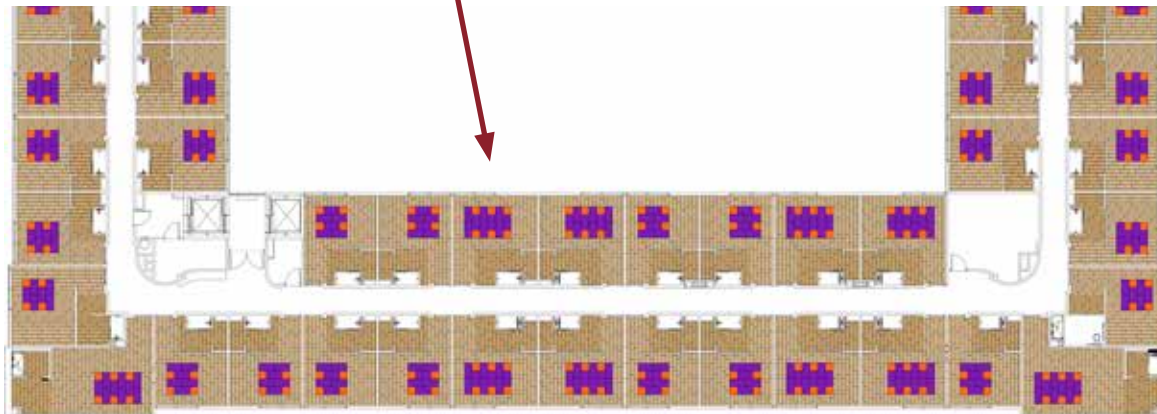
PRODUCT	KIT#	CONTROL#	ITEM#	COLOR#	SAMPLE#	SIZE	INSTALLATION
A LVT Natural Woodgrains		X-010	276813	A00207 Washed Wheat		25 cm x 1 m	Ashlar
*B Area Rug Kit	98.1110.32	X-004-EG-ALT3	300335			2 m x 2 m	Pattern by Tile
Custom				188239	265403-191		
Custom				188240	265403-191		
B Area Rug Kit	98.1110.33	X-005-EG-ALT3	300331			3 m x 2 m	Pattern by Tile
Custom				188239	265403-191		
Custom				188240	265403-191		

**Scene represents 2 m x 2 m rug kit.*

INSTALLATION SPECIFICATIONS	CONTROL#	ITEM#	DESCRIPTION
XL Brands 2000 Plus Adhesive			Double stick install
Selitbloc Underlayment	X-011	276822	Underlayment for entire room with carpet and LVT system

ECLECTIC SCHEME/ELECTRIC GRID GUESTROOM INSTALLATION PLAN

All quantities are estimates only and are based on plans provided. Site measurements and field verifications are recommended to ensure accuracy. These quantities are not intended to be used for material ordering purposes. Since waste factors may vary by installer, actual ordering quantities are the responsibility of your flooring contractor.



LEGEND

A

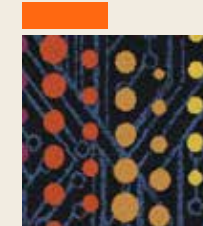
DRY

WET



PRODUCT: LVT Natural Woodgrains
CONTROL: X-010
ITEM: 276813
COLOR: A00207 Washed Wheat
SIZE: 25 cm x 1 m
INSTALLED: Ashlar

B



PRODUCT: Custom
CONTROL: X-004-EG-ALT3
ITEM: 300335
COLOR/SAMPLE: 188239_265403-191
SIZE: 50 cm x 50 cm
INSTALLED: Pattern by Tile

B



PRODUCT: Custom
CONTROL: X-004-EG-ALT3
ITEM: 300335
COLOR/SAMPLE: 188240_265403-191
SIZE: 50 cm x 1 m
INSTALLED: Pattern by Tile

ECLECTIC SCHEME/SUMMER SPLASH GUESTROOM PROTOTYPE ORDER INFORMATION

Carpet tiles **SAVE APPROXIMATELY 18%-20% IN PRODUCT WASTE** versus broadloom, based on prototype layout.



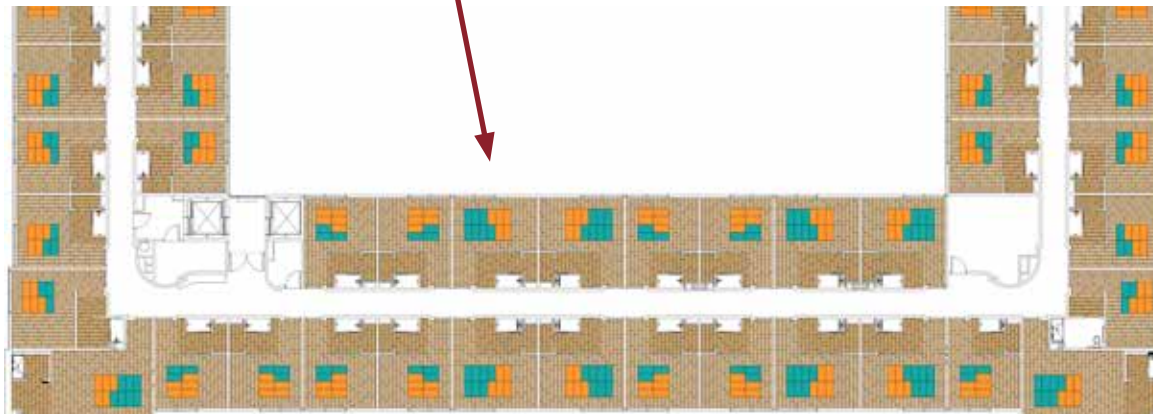
PRODUCT	KIT#	CONTROL#	ITEM#	COLOR#	SAMPLE#	SIZE	INSTALLATION
A LVT Natural Woodgrains		X-010	276813	A00207 Washed Wheat		25 cm x 1 m	Ashlar
*B Area Rug Kit	98.1110.37	X-004-SS-ALT4	304065			2 m x 2 m	Pattern by Tile
Custom				188502	267870-090		
Custom				188503	267870-091		
B Area Rug Kit	98.1110.36	X-005-GA-ALT1	304063			3 m x 2 m	Pattern by Tile
Custom				188502	267870-090		
Custom				188503	267870-091		

**Scene represents 2 m x 2 m rug kit.*

INSTALLATION SPECIFICATIONS	CONTROL#	ITEM#	DESCRIPTION
XL Brands 2000 Plus Adhesive			Double stick install
Selitbloc Underlayment	X-011	276822	Underlayment for entire room with carpet and LVT system

ECLECTIC SCHEME/SUMMER SPLASH GUESTROOM INSTALLATION PLAN

All quantities are estimates only and are based on plans provided. Site measurements and field verifications are recommended to ensure accuracy. These quantities are not intended to be used for material ordering purposes. Since waste factors may vary by installer, actual ordering quantities are the responsibility of your flooring contractor.



LEGEND

A



PRODUCT: LVT Natural Woodgrains
CONTROL: X-010
ITEM: 276813
COLOR: A00207 Washed Wheat
SIZE: 25 cm x 1 m
INSTALLED: Ashlar

B



PRODUCT: Custom
CONTROL: X-004-SS-ALT4
ITEM: 304065
COLOR/SAMPLE: 188502_267870-090
SIZE: 50 cm x 1 m
INSTALLED: Pattern by Tile

B



PRODUCT: Custom
CONTROL: X-004-SS-ALT4
ITEM: 304065
COLOR/SAMPLE: 188503_267870-091
SIZE: 50 cm x 1 m
INSTALLED: Pattern by Tile

SNOWSCAPE SCHEME GUESTROOM PROTOTYPE ORDER INFORMATION

Carpet tiles **SAVE APPROXIMATELY 18%-20% IN PRODUCT WASTE** versus broadloom, based on prototype layout.



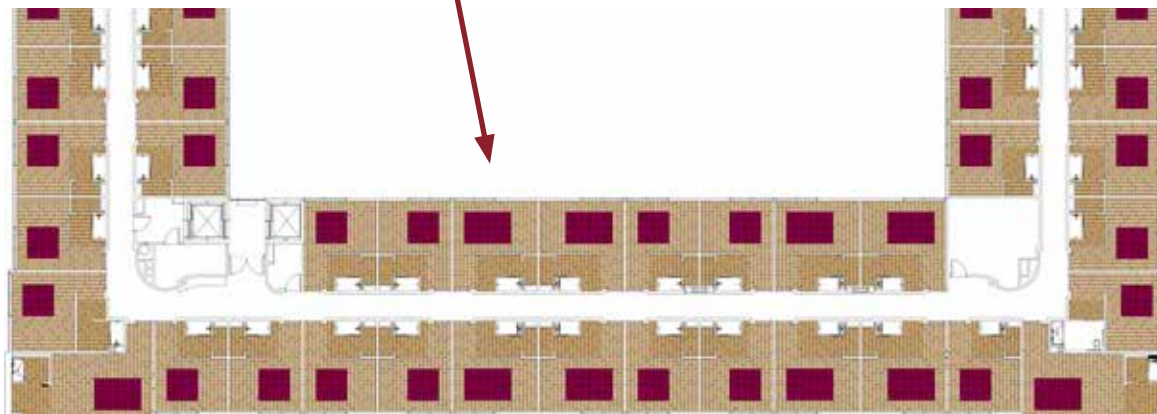
PRODUCT	KIT#	CONTROL#	ITEM#	COLOR#	SAMPLE#	SIZE	INSTALLATION
A LVT Natural Woodgrains		X-010	276813	A00207 Washed Wheat		25 cm x 1 m	Ashlar
*B Area Rug Kit	98.1110.72	X-004-SN-ALT5	328417			2 m x 2 m	Quarter Turn
On The Road Again				190717	267549-084		
B Area Rug Kit	98.1110.71	X-005-SN-ALT5	328418			3 m x 2 m	Quarter Turn
On The Road Again				190717	267549-084		

*Scene represents 2 m x 2 m rug kit.

INSTALLATION SPECIFICATIONS	CONTROL#	ITEM#	DESCRIPTION
XL Brands 2000 Plus Adhesive			Double stick install
Selitbloc Underlayment	X-011	276822	Underlayment for entire room with carpet and LVT system

SNOWSCAPE SCHEME GUESTROOM INSTALLATION PLAN

All quantities are estimates only and are based on plans provided. Site measurements and field verifications are recommended to ensure accuracy. These quantities are not intended to be used for material ordering purposes. Since waste factors may vary by installer, actual ordering quantities are the responsibility of your flooring contractor.



LEGEND

A

DRY

WET



PRODUCT: LVT Natural Woodgrains
CONTROL: X-010
ITEM: 276813
COLOR: A00207 Washed Wheat
SIZE: 25 cm x 1 m
INSTALLED: Ashlar

B



PRODUCT: On the Road Again
CONTROL: X-004-SN-ATL5
ITEM: 328417
COLOR/SAMPLE:
190717_267549-084
SIZE: 50 cm x 50 cm
INSTALLED: Quarter Turn

BACK OF HOUSE PROTOTYPE ORDER INFORMATION

Carpet tiles **SAVE APPROXIMATELY 18%-20% IN PRODUCT WASTE** versus broadloom, based on prototype layout.



PRODUCT	CONTROL#	ITEM#	COLOR#	SAMPLE#	SIZE	INSTALLATION
Cloud Cover	OA-001	320569	189839	267549-069	50 cm x 50 cm	Non Directional

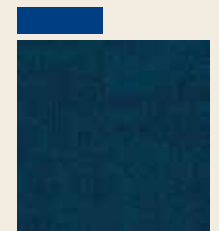
INSTALLATION SPECIFICATIONS	CONTROL#	ITEM#	DESCRIPTION
XL Brands 2000 Plus Adhesive			Double stick install

BACK OF HOUSE INSTALLATION PLAN

All quantities are estimates only and are based on plans provided. Site measurements and field verifications are recommended to ensure accuracy. These quantities are not intended to be used for material ordering purposes. Since waste factors may vary by installer, actual ordering quantities are the responsibility of your flooring contractor.



LEGEND



PRODUCT: Cloud Cover
CONTROL: OA-001
ITEM: 320569
COLOR/SAMPLE:
189839_267549-069
SIZE: 50 cm x 50 cm
INSTALLED: Non Directional