

Interface Hospitality
HILTON

Hampton Inn By Hilton
Hilton Garden Inn
Home 2 Suites
Homewood Suites By Hilton
Tru By Hilton

Why **Interface® Hospitality**?

Interface Hospitality is a **Hilton** approved supplier of carpet tile and LVT. We are currently on the following prototypes:

- Hampton Inn by Hilton
- Hilton Garden Inn
- Home 2 Suites
- Tru By Hilton

1. **8 WEEKS OR LESS LEAD TIME** for anything not already in stock.
2. **NO ROLL SIZES OR WIDTHS** to deal with. We come in boxes!
3. What about **UNIT COST?** We can compare the real cost of tile vs. broadloom for each project and show you the true savings.
4. **15 YEAR WARRANTY.** Say no more.
5. **SELECTIVE REPLACEMENT** means little to no disruptions to hotel operations.
6. **INTERSEPT®** antimicrobial protection. Keepin' it clean.
7. **PROTEKT²** stain resistant technology. Keepin' it real clean!
8. Greater **EASE OF HANDLING**, less liability related to mis-cutting of broadloom.
9. Order and installation is a breeze with our **ESTIMATES, SEAMING DIAGRAMS, AND RENDERINGS.**
10. All of our yarns are **100% SOLUTION-DYED NYLON.**
11. **VARIOUS TILE SIZES** make is easier to design/define spaces and sub-spaces.
12. Our **CARPET** and **LVT** work together in seamless integration, with no transition strips.
13. We are **MORE SUSTAINABLE:** All of our products are **EPD** verified.
14. Interface Hospitality's **REENTRY® RECLAMATION & RECYCLING** program results in our products having up to 80% recycled content, from returned/used carpet.
15. We are the first global manufacturer to declare that all our products globally – including all carpet and luxury vinyl tile (LVT) – are **CARBON NEUTRAL** across their entire product lifecycle.

Why **Interface® Hospitality**?

1. **Lead Time**

If not in stock, our lead times are 6-8 weeks and all products are manufactured in the USA. FOB Union City, Georgia.

2. **No Roll Sizes or Widths**

There are no widths and roll sizes to deal with, which can often lead to hidden costs and unused material.

3. **Unit Cost**

The unit cost is only part of the evaluation when comparing carpet tile to broadloom for your hotel. Waste is a big consideration with total project cost. We can develop project specific CO's to compare total project cost for your individual property.

4. **15 Year Warranty**

All Interface Hospitality products are hard wearing, provide lasting protection against excessive surface wear, edge ravel, backing separation, shrinking, stretching and permanent soiling and staining.

5. **Selective Replacement**

Whether you're replacing a single guest room, a corridor, or an entire hotel, you can do so without disruption. Interface Hospitality's selective replacement enables old flooring to be replaced quickly and efficiently any day of the week your carpet replacement costs can be cut by up to 50%.

6. **Intersept®**

Mold Protection no matter what's spilled on the floor, our proprietary antimicrobial preservative, Intersept®, protects our modular carpet against the growth of odor-causing bacteria guaranteed. With proper maintenance, Intersept treated carpet safely and effectively inhibits the growth of mold and other bacteria so your floors are always fresh. All Interface carpet is standard with Intersept.

7. **Protekt®**

Because stain resist technology - Protekt® - is built into Interface carpet tiles, a topical stain resist treatment is not necessary. The additional polymer is included when nylon is manufactured so it permanently increases stain resistance. We conducted stain tests on our products and compared them to products with a topical treatment. The results? Our uncoated fibers performed just as well as the treated ones. Additionally, the fluorinated chemicals traditionally used in stain resist treatments, when they do wash off, persist in the environment for thousands of years. With Protekt®, you get permanent stain resistance, not permanent pollution.

8. **Ease of Handling**

Carpet tile offers greater ease of handling, and installers have less liability related to possible mis-cutting of broadloom.

9. **Installation**

Order and installation is a breeze with our estimates, seaming diagrams and renderings.

10. **100% Solution-dyed Nylon**

Vibrant color that does not fade. All Interface Hospitality carpet tiles are made from durable, stain resistant, 100% solution dyed nylon. Offering superior color fastness and a wide array of colors and textures, solution dyed nylon is less harmful to the environment, using no water or toxic chemicals in the manufacturing process.

11. **Various Sizes**

Using, 50cm, 1m, 25cm x 1m and 50cm x 1m tiles allows for optimal pattern repeats, asymmetrical and symmetrical designs and color use. It also allows design to define Spaces / Nesting within larger areas.

12. **Integrated System**

Interface modular tiles span a wide selection of designs that offer pattern, color and texture options for a myriad of flooring needs. Tiles come in a variety of shape and size modules that work seamlessly and interchangeably with each other. This compatibility allows for holistic flooring solutions with expansive design flexibility.

13. **Sustainable Choice**

Environmental Responsibility. Interface Hospitality was the industry's first to earn an EPD (Environmental Product Declaration), which evaluates consistent factors based on full lifecycle assessment (LCA). We now have published EPDs for 99% of our products globally. In addition, all of our products with GlasBac®, GlasBacRE and NexStep® backings meet NSF/ANSI 140 Sustainable Carpet Assessment Standard (SCAS) for carpet.

14. **Carpet Recycling Program: ReEntry®**

Recyclable is Now a Reality. Through our ReEntry program and partnerships with our fiber suppliers and recycler centers throughout North America, separated Type 6 and 6,6 nylon are recycled into new 6 and 6,6 nylon, while separated GlasBac® and similar competitor backings are recycled into GlasBac®RE non-virgin PVC backing using our Cool Blue™ technology. The result? Products with up to 80% total recycled content, including as much as 35% post-consumer content.

15. **Carbon Neutral**

We are the first global manufacturer to declare that all our products globally — including all carpet and luxury vinyl tile (LVT) — are carbon neutral across their entire product lifecycle. We've achieved carbon neutrality by drastically reducing our carbon footprint and addressing the rest of our emissions through carbon offset investments.

16. **Dimensional Stability**

Interface GlasBac® backing has been tested and proven in the marketplace for over 30 years. Engineered to provide superior dimensional stability, GlasBac® modular carpet tiles will not stretch or shrink when exposed to heat or cold, heavy foot or rolling traffic.

17. **Sound Absorption**

Quiet space is essential when people need to focus and concentrate. Sound absorption is therefore critical when colleagues need to collaborate without becoming a distraction to their neighbors. Interface Hospitality carpets provide high sound absorption and insulation.

Casual Lobby Prototype Order Information

CONTACT: Sofia Davila sofia.davila@interface.com | 347.633.0577 or your local Account Executive



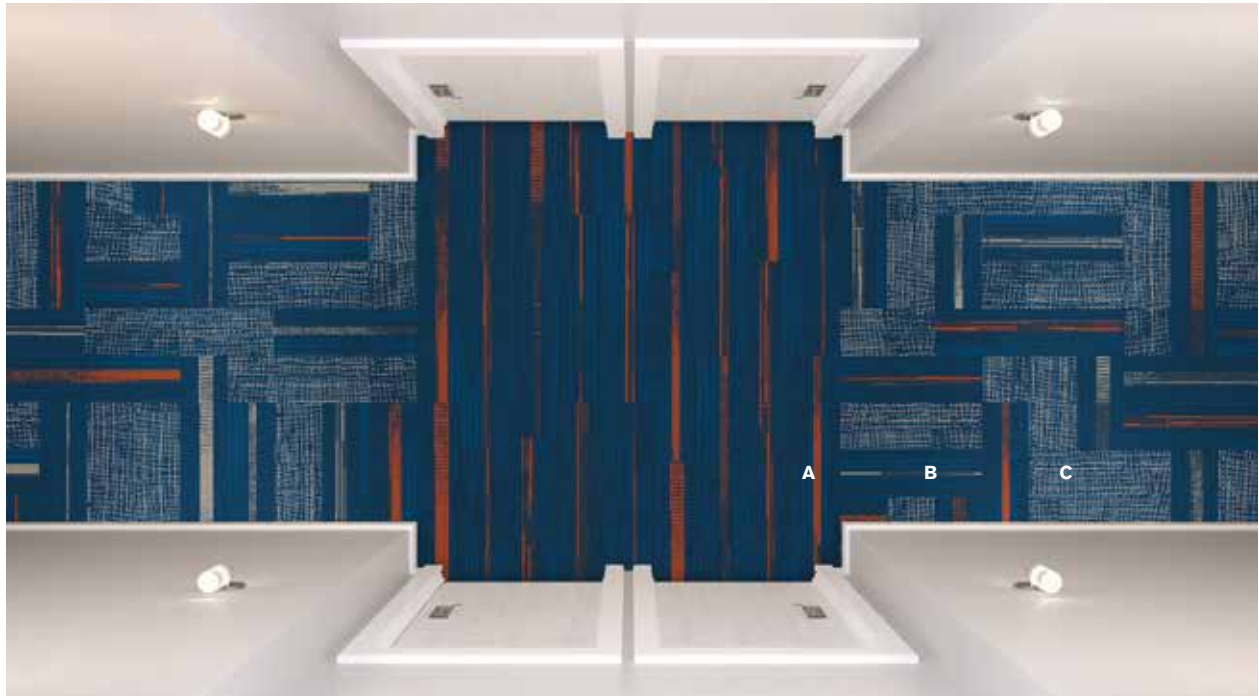
Lobby Product	Hilton Spec. #	Sample #	Color #	Size	Installation
Ground Waves A	C-10 C-1	257617-089	189122	25cm x 1m	Herringbone
Ground Waves B	C-10 C-2	257617-091	189108	25cm x 1m	Herringbone
Installation Specifications	Description				
XL2000 Plus	Adhesive				

Interface® Hospitality



Casual Corridor Prototype Order Information

CONTACT: Sofia Davila sofia.davila@interface.com | 347.633.0577 or your local Account Executive

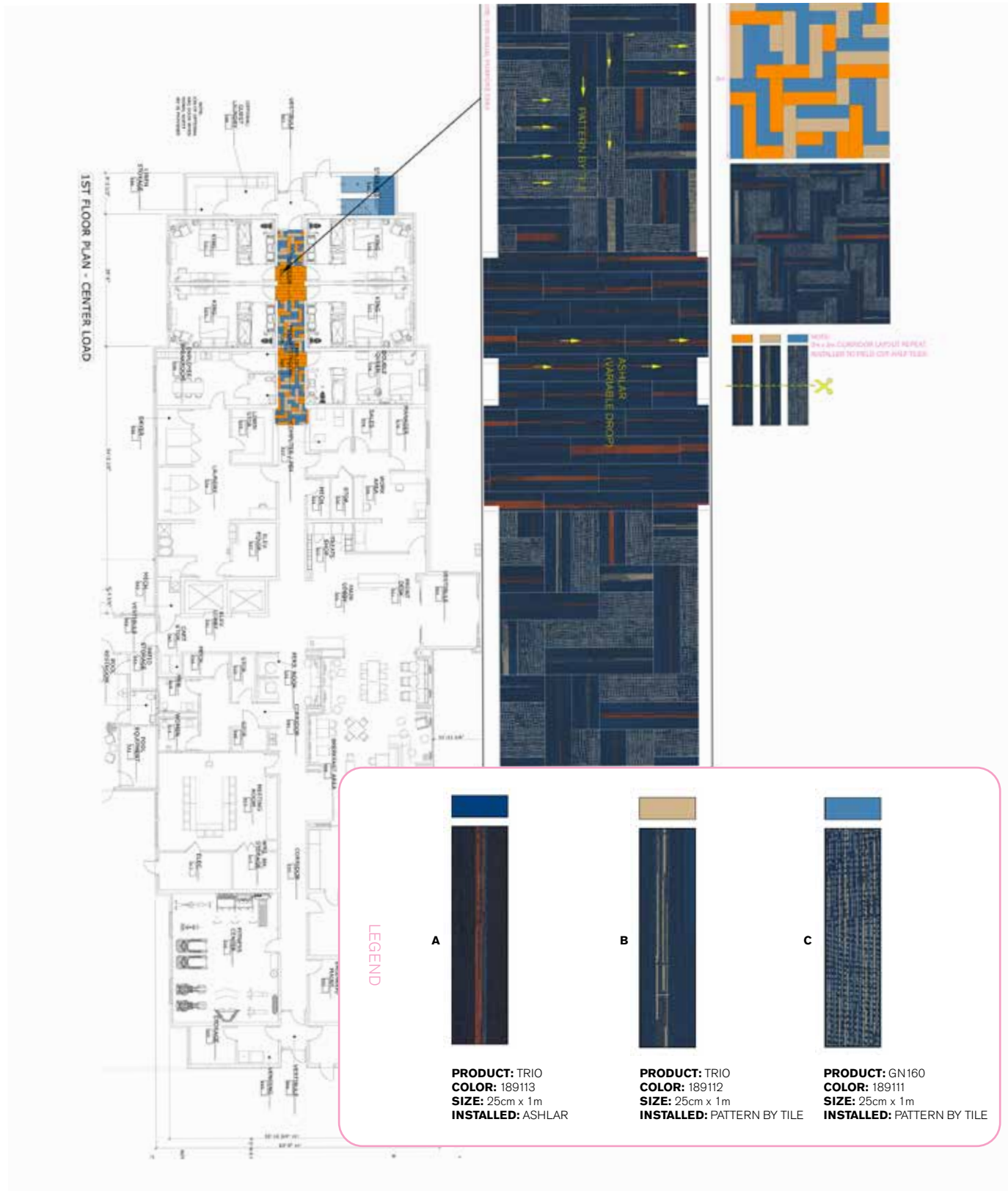


Corridor Products	Hilton Spec. #	Sample #	Color #	Size	Installation
Trio A	C-11 C-1	268431-020	189113	25cm x 1m	Ashlar
Trio B	C-11 C-2	268431-021	189112	25cm x 1m	Pattern by Tile
GN160 C	C-11 C-3	268431-022	189111	25cm x 1m	Pattern by Tile
Stair Products	Hilton Spec. #	Sample #	Color #	Backing	Description
GN160		268431-022	189111	Glasbac	Stair Landing
GN160		268431-022	189111	Unbacked Sheet Goods	Stair Carpet
Installation Specifications	Description				
XL2000 Plus	Adhesive				

CORRIDOR INSTALLATION PLAN

Interface Hospitality

All quantities are estimates only and are based on plans provided. Site measurements and field verifications are recommended to ensure accuracy. These quantities are not intended to be used for material ordering purposes. Since waste factors may vary by installer, actual ordering quantities are the responsibility of your flooring contractor.



Casual Guest Room Prototype Order Information

CONTACT: Sofia Davila sofia.davila@interface.com | 347.633.0577 or your local Account Executive

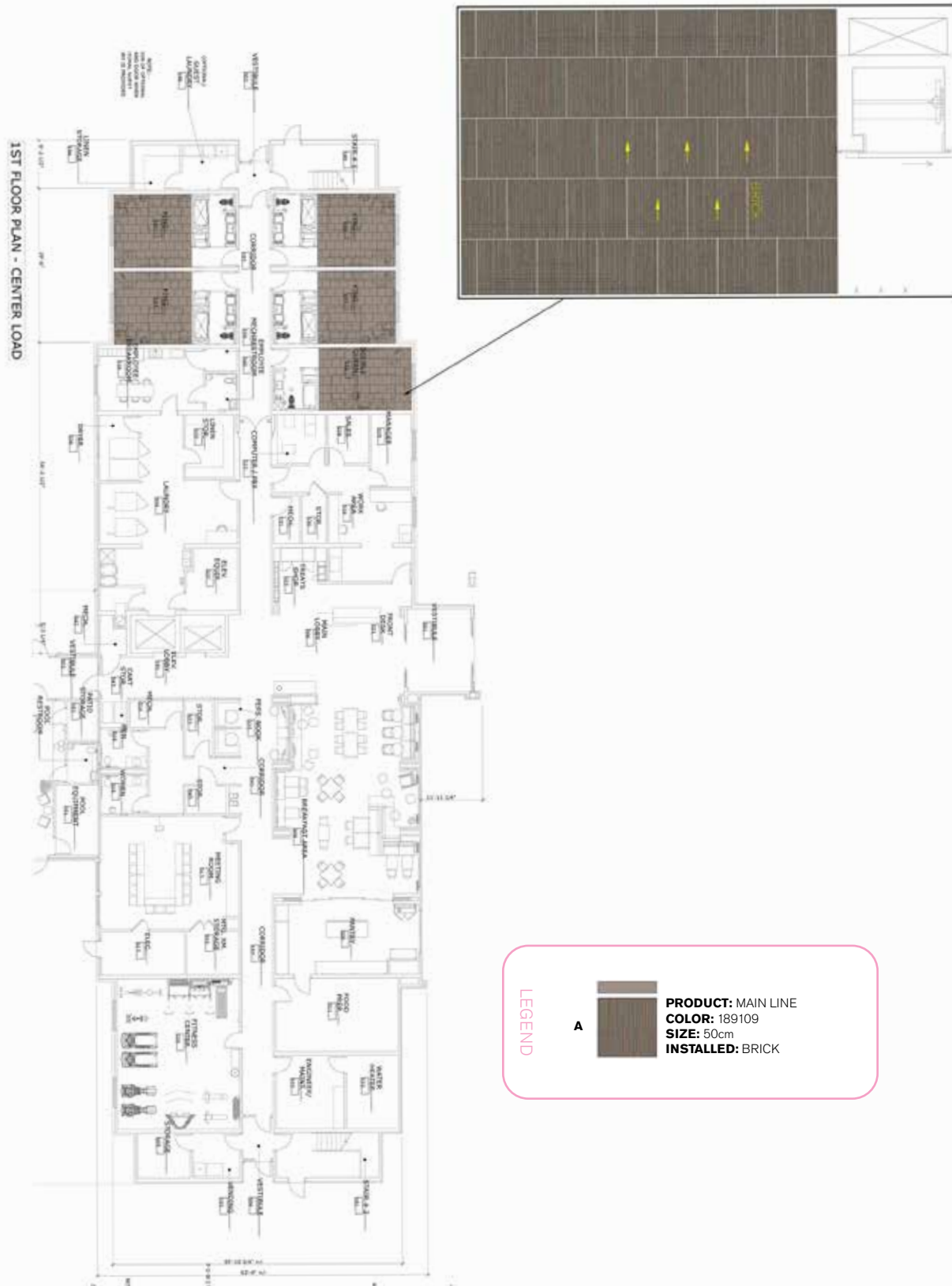


Guest Room Product	Hilton Spec. #	Sample#	Color #	Size	Installation
Main Line	C-01 C	268431-033	189109	50cm x 50cm	Brick
Installation Specifications	Description				
XL2000 Plus	Adhesive				

GUEST ROOM INSTALLATION PLAN

Interface Hospitality

All quantities are estimates only and are based on plans provided. Site measurements and field verifications are recommended to ensure accuracy. These quantities are not intended to be used for material ordering purposes. Since waste factors may vary by installer, actual ordering quantities are the responsibility of your flooring contractor.



Casual Meeting Room Prototype Order Information

CONTACT: Sofia Davila sofia.davila@interface.com | 347.633.0577 or your local Account Executive



Meeting Room Product	Hilton Spec. #	Sample#	Color #	Size	Installation
Ground Waves	C-12 C	257617-089	189122	25cm x 1m	Quarter Turn
Installation Specifications	Description				
XL2000 Plus	Adhesive				

GUEST ROOM INSTALLATION PLAN

Interface Hospitality

All quantities are estimates only and are based on plans provided. Site measurements and field verifications are recommended to ensure accuracy. These quantities are not intended to be used for material ordering purposes. Since waste factors may vary by installer, actual ordering quantities are the responsibility of your flooring contractor.



Casual Office Prototype Order Information

CONTACT: Sofia Davila sofia.davila@interface.com | 347.633.0577 or your local Account Executive



Office Product	Hilton Spec. #	Sample#	Color #	Size	Installation
Ground Waves	C-13 C	257617-089	189122	25cm x 1m	Ashlar
Installation Specifications	Description				
XL2000 Plus	Adhesive				

OFFICE INSTALLATION PLAN

Interface Hospitality

All quantities are estimates only and are based on plans provided. Site measurements and field verifications are recommended to ensure accuracy. These quantities are not intended to be used for material ordering purposes. Since waste factors may vary by installer, actual ordering quantities are the responsibility of your flooring contractor.



Casual Break Room Prototype Order Information

CONTACT: Sofia Davila sofia.davila@interface.com | 347.633.0577 or your local Account Executive

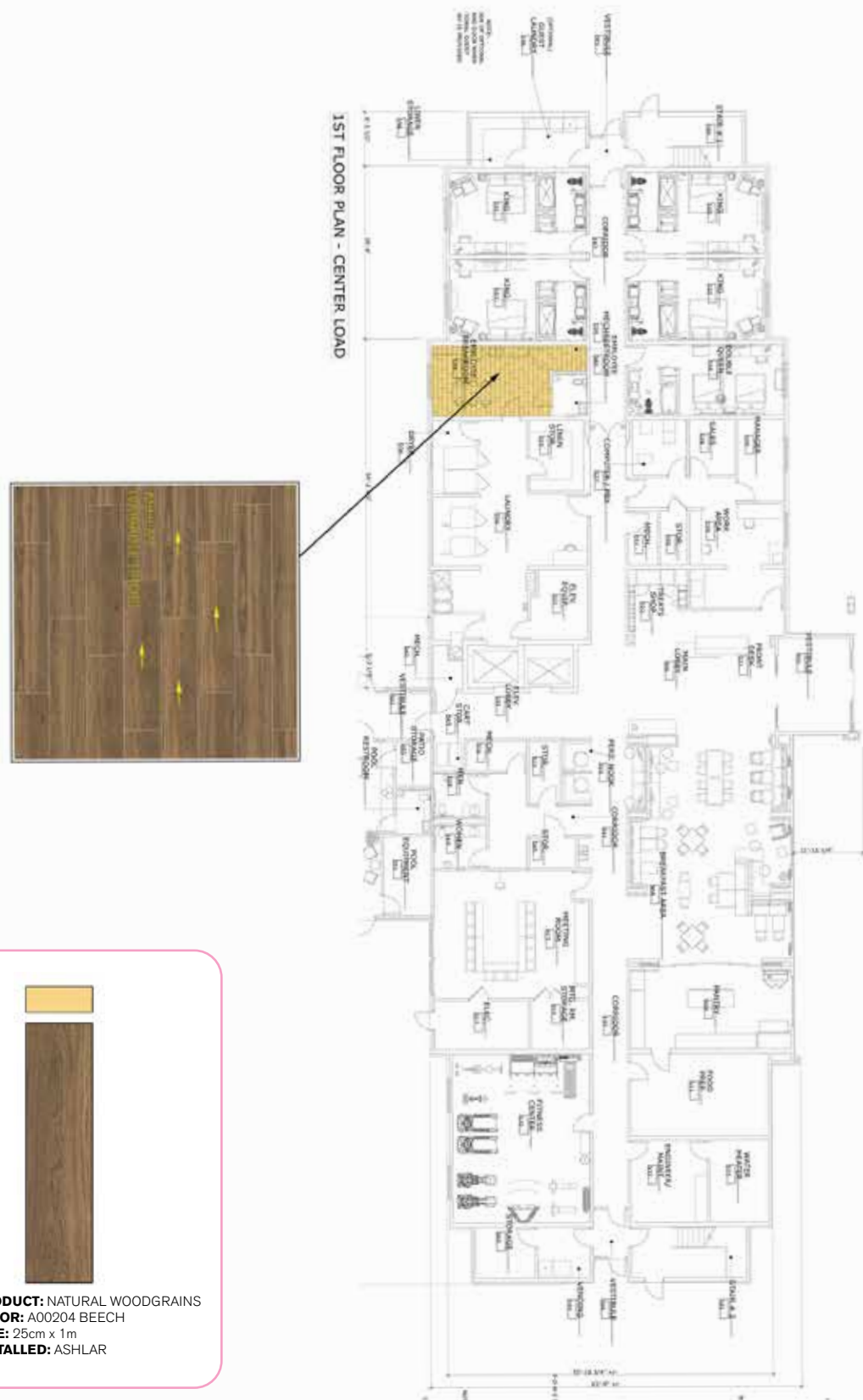


Break Room Product	Hilton Spec. #	Color #	Size	Installation
Natural Woodgrains LVT	LVT-15 C	A00204 Beech	25cm x 1m	Ashlar
Installation Specifications	Description			
XL2000 Plus	Adhesive			

BREAK ROOM INSTALLATION PLAN

Interface Hospitality

All quantities are estimates only and are based on plans provided. Site measurements and field verifications are recommended to ensure accuracy. These quantities are not intended to be used for material ordering purposes. Since waste factors may vary by installer, actual ordering quantities are the responsibility of your flooring contractor.



Confident Lobby Prototype Order Information

CONTACT: Sofia Davila sofia.davila@interface.com | 347.633.0577 or your local Account Executive

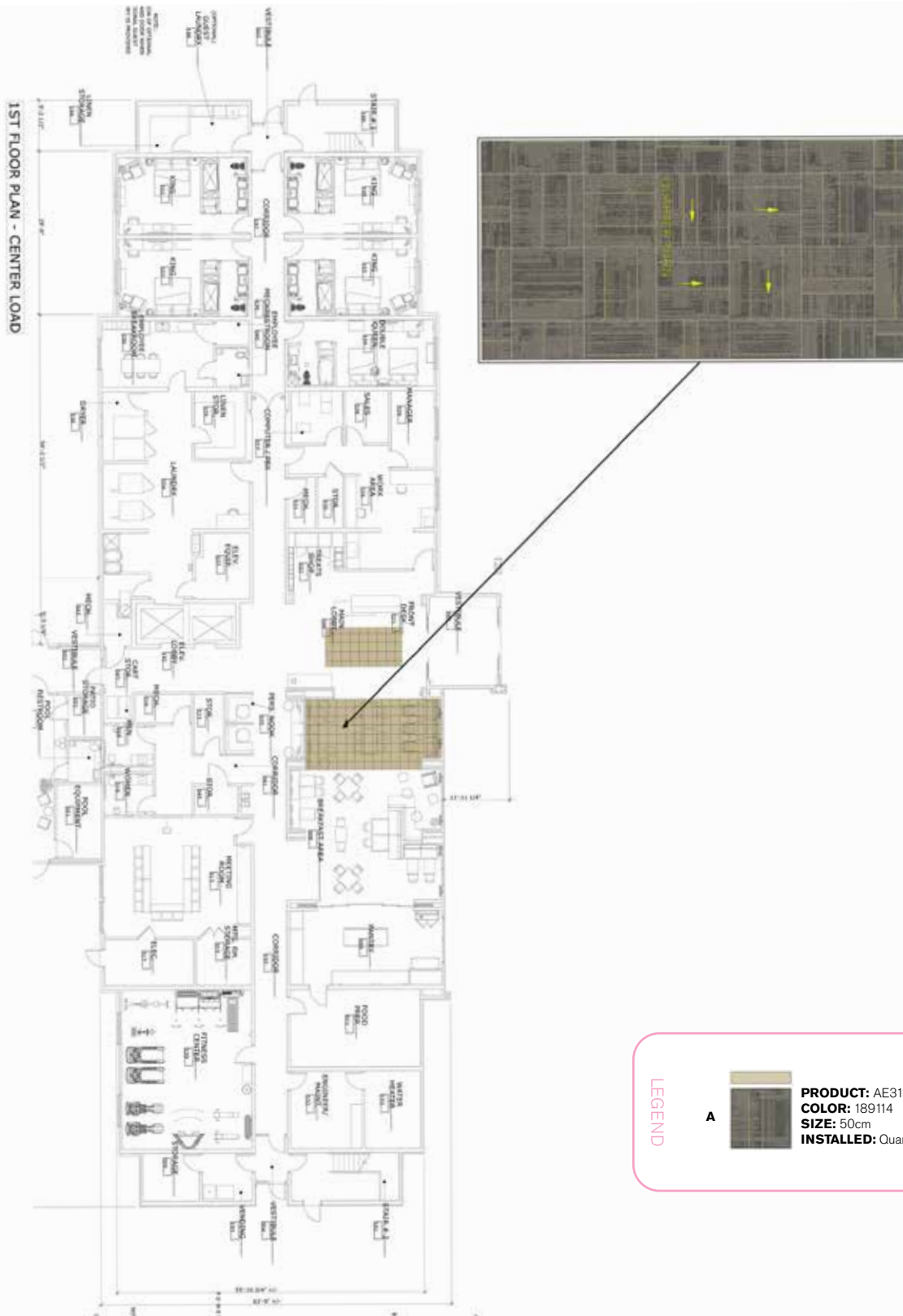


Lobby Product	Hilton Spec. #	Sample#	Color #	Size	Installation
AE312	C-10 C	268431-039	189114	50cm x 50cm	Quarter Turn
Installation Specifications	Description				
XL2000 Plus	Adhesive				

LOBBY INSTALLATION PLAN

Interface Hospitality

All quantities are estimates only and are based on plans provided. Site measurements and field verifications are recommended to ensure accuracy. These quantities are not intended to be used for material ordering purposes. Since waste factors may vary by installer, actual ordering quantities are the responsibility of your flooring contractor.



Confident Corridor Prototype Order Information

CONTACT: Sofia Davila sofia.davila@interface.com | 347.633.0577 or your local Account Executive



Corridor Product	Hilton Spec. #	Sample#	Color #	Size	Installation
Custom	C-11 C-1	268458-055	189121	25cm x 1m	Ashlar
Custom	C-11 C-2	268458-056	189120	25cm x 1m	Ashlar
Installation Specifications	Description				
XL2000 Plus	Adhesive				

CORRIDOR INSTALLATION PLAN

Interface Hospitality

All quantities are estimates only and are based on plans provided. Site measurements and field verifications are recommended to ensure accuracy. These quantities are not intended to be used for material ordering purposes. Since waste factors may vary by installer, actual ordering quantities are the responsibility of your flooring contractor.



LEGEND

A



PRODUCT: CUSTOM
COLOR: 189121
SIZE: 25cm x 1m
INSTALLED: ASHLAR
* There are multiple tile variations within a box.

B



PRODUCT: CUSTOM
COLOR: 189120
SIZE: 25cm x 1m
INSTALLED: ASHLAR
* There are multiple tile variations within a box.

Confident Guest Room Prototype Order Information

CONTACT: Sofia Davila sofia.davila@interface.com | 347.633.0577 or your local Account Executive

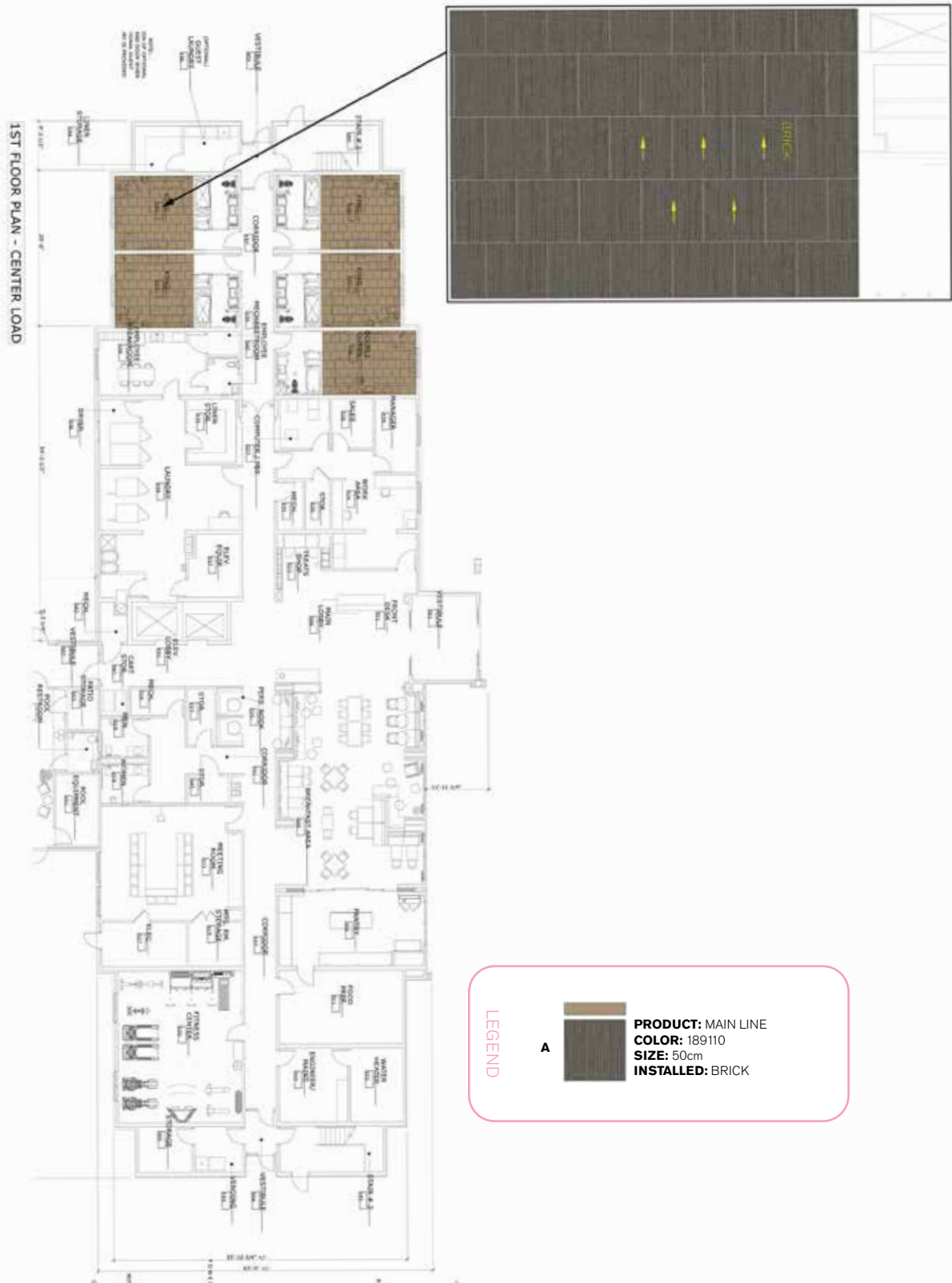


Guest Room Product	Hilton Spec. #	Color #	Sample#	Size	Installation
Main Line	C-01 C	189110	268458-052	50cm x 50cm	Brick
Installation Specifications	Description				
XL2000 Plus	Adhesive				

GUEST ROOM INSTALLATION PLAN

Interface Hospitality

All quantities are estimates only and are based on plans provided. Site measurements and field verifications are recommended to ensure accuracy. These quantities are not intended to be used for material ordering purposes. Since waste factors may vary by installer, actual ordering quantities are the responsibility of your flooring contractor.



Confident Meeting Room Prototype Order Information

CONTACT: Sofia Davila sofia.davila@interface.com | 347.633.0577 or your local Account Executive



Meeting Room Product	Hilton Spec. #	Sample#	Color #	Size	Installation
Custom	C-12 C-1	268458-055	189121	25cm x 1m	Quarter Turn
Custom	C-12 C-2	268458-056	189120	25cm x 1m	Quarter Turn
Installation Specifications	Description				
XL2000 Plus	Adhesive				

Interface® Hospitality

[illegible]

LEGEND



B



PRODUCT: CUSTOM
COLOR: 189120
SIZE: 25cm x 1m
INSTALLED: QUARTER TURN
** There are multiple tile variations within a box.*

Confident Office Prototype Order Information

CONTACT: Sofia Davila sofia.davila@interface.com | 347.633.0577 or your local Account Executive

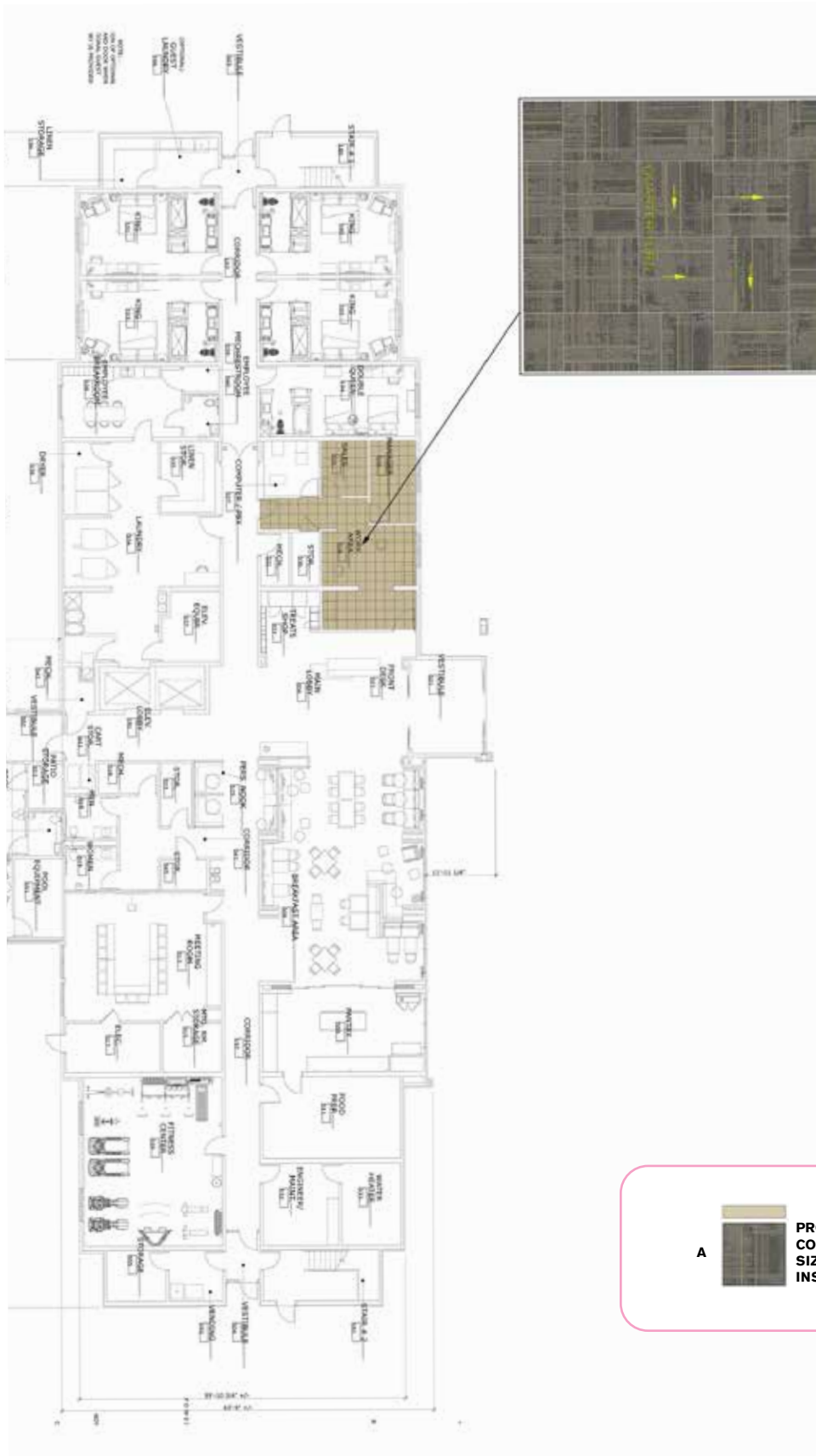


Office Product	Hilton Spec. #	Sample#	Color #	Size	Installation
AE312	C-13 C	268431-039	189114	50cm x 50cm	Quarter Turn
Installation Specifications	Description				
XL2000 Plus	Adhesive				

OFFICE INSTALLATION PLAN

Interface Hospitality

All quantities are estimates only and are based on plans provided. Site measurements and field verifications are recommended to ensure accuracy. These quantities are not intended to be used for material ordering purposes. Since waste factors may vary by installer, actual ordering quantities are the responsibility of your flooring contractor.



A



PRODUCT: AE312
COLOR: 189114
SIZE: 50cm
INSTALLED: QUARTER TURN

Confident Break Room Prototype Order Information

CONTACT: Sofia Davila sofia.davila@interface.com | 347.633.0577 or your local Account Executive



Break Room Product	Hilton Spec. #	Color #	Size	Installation
Natural Woodgrains LVT	LVT-15	A00204 Beech	25cm x 1m	Ashlar
Installation Specifications	Description			
XL2000 Plus	Adhesive			

Interface® Hospitality

1ST FLOOR PLAN - CENTER LOAD

LEGEND

A

PRODUCT: NATURAL WOODGRAINS
COLOR: A00204 BEECH
SIZE: 25cm x 1m
INSTALLED: ASHLAR

Bloom Lobby Prototype Order Information

CONTACT: Sofia Davila sofia.davila@interface.com | 347.633.0577 or your local Account Executive

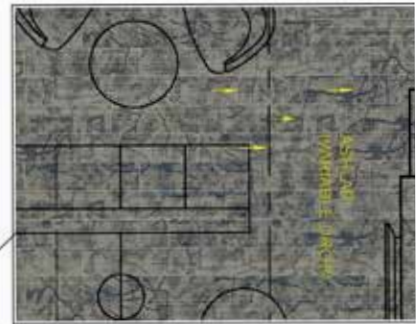
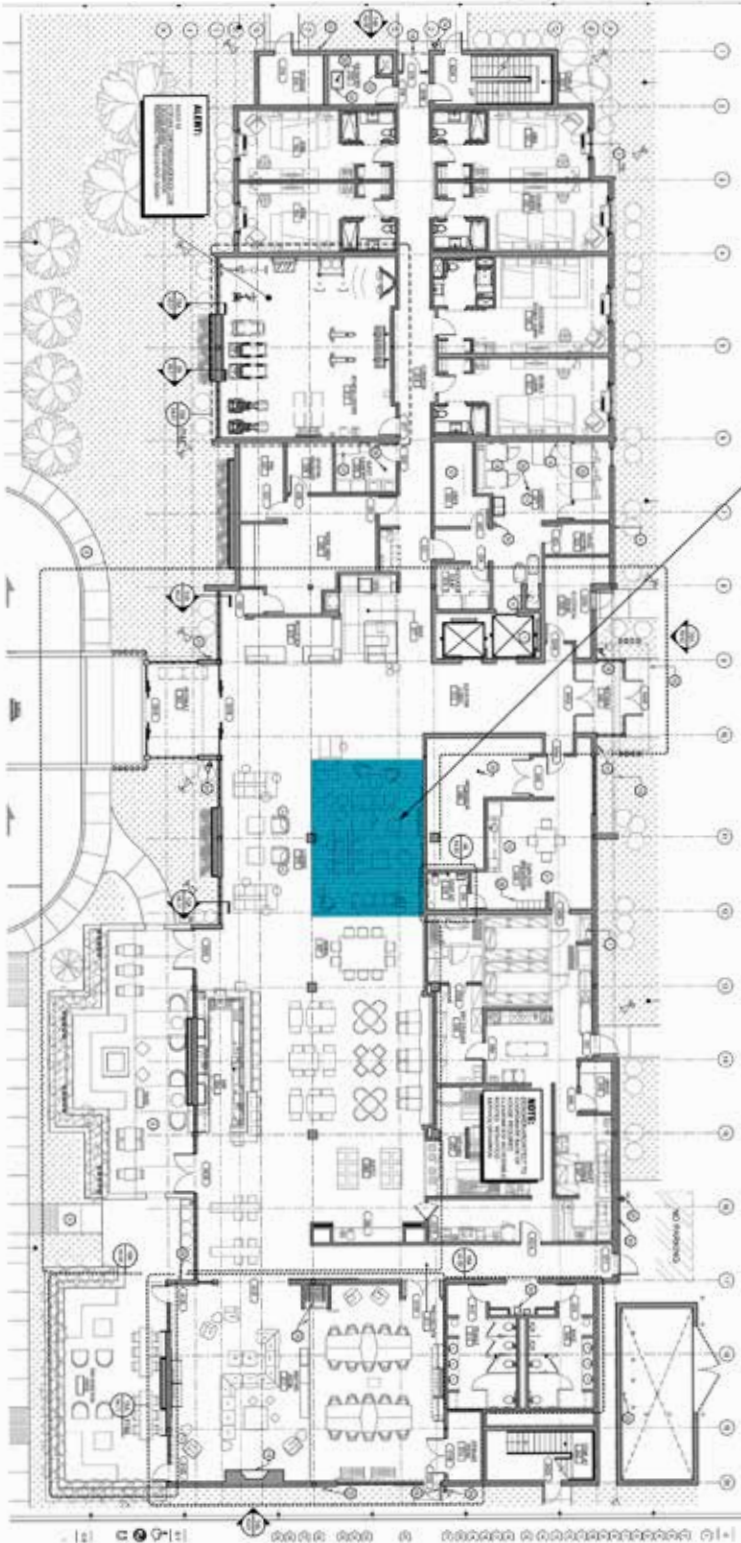


Lobby Product	Hilton Spec. #	Sample #	Color #	Size	Installation
Custom	C-10	268520-125	189098	25cm x 1m	Ashlar
Installation Specifications	Description				
XL2000 Plus	Adhesive				

LOBBY INSTALLATION PLAN

Interface Hospitality

All quantities are estimates only and are based on plans provided. Site measurements and field verifications are recommended to ensure accuracy. These quantities are not intended to be used for material ordering purposes. Since waste factors may vary by installer, actual ordering quantities are the responsibility of your flooring contractor.



LEGEND

A



PRODUCT: CUSTOM
COLOR: 189098
SIZE: 25cm x 1m
INSTALLED: ASHLAR

Bloom Corridor Prototype Order Information

CONTACT: Sofia Davila sofia.davila@interface.com | 347.633.0577 or your local Account Executive

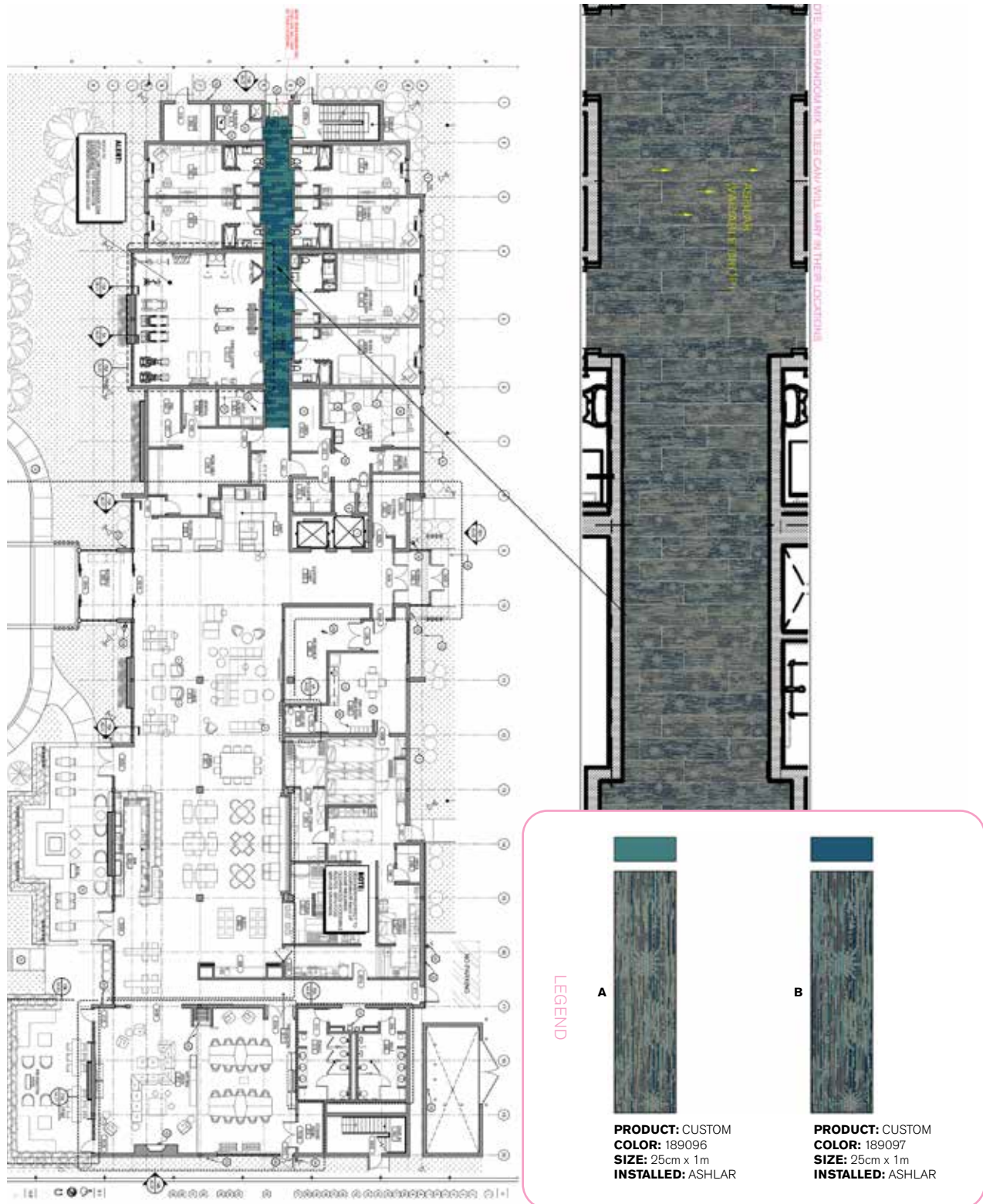


Corridor Products	Hilton Spec. #	Sample #	Color #	Size	Installation
Custom A	C-12	268520-137	189096	25cm x 1m	Ashlar
Custom B	C-11	268520-122	189097	25cm x 1m	Ashlar
Stair Products	Hilton Spec. #	Sample #	Color #	Backing	Description
Custom	C-16	268520-122	189097	Glasbac	Stair Landaing
Custom	C-16	268520-122	189097	Unbacked Sheet Goods	Stair Carpet
Installation Specifications	Description				
XL2000 Plus	Adhesive				

CORRIDOR INSTALLATION PLAN

Interface Hospitality

All quantities are estimates only and are based on plans provided. Site measurements and field verifications are recommended to ensure accuracy. These quantities are not intended to be used for material ordering purposes. Since waste factors may vary by installer, actual ordering quantities are the responsibility of your flooring contractor.



Bloom Guest Room Prototype Order Information

CONTACT: Sofia Davila sofia.davila@interface.com | 347.633.0577 or your local Account Executive

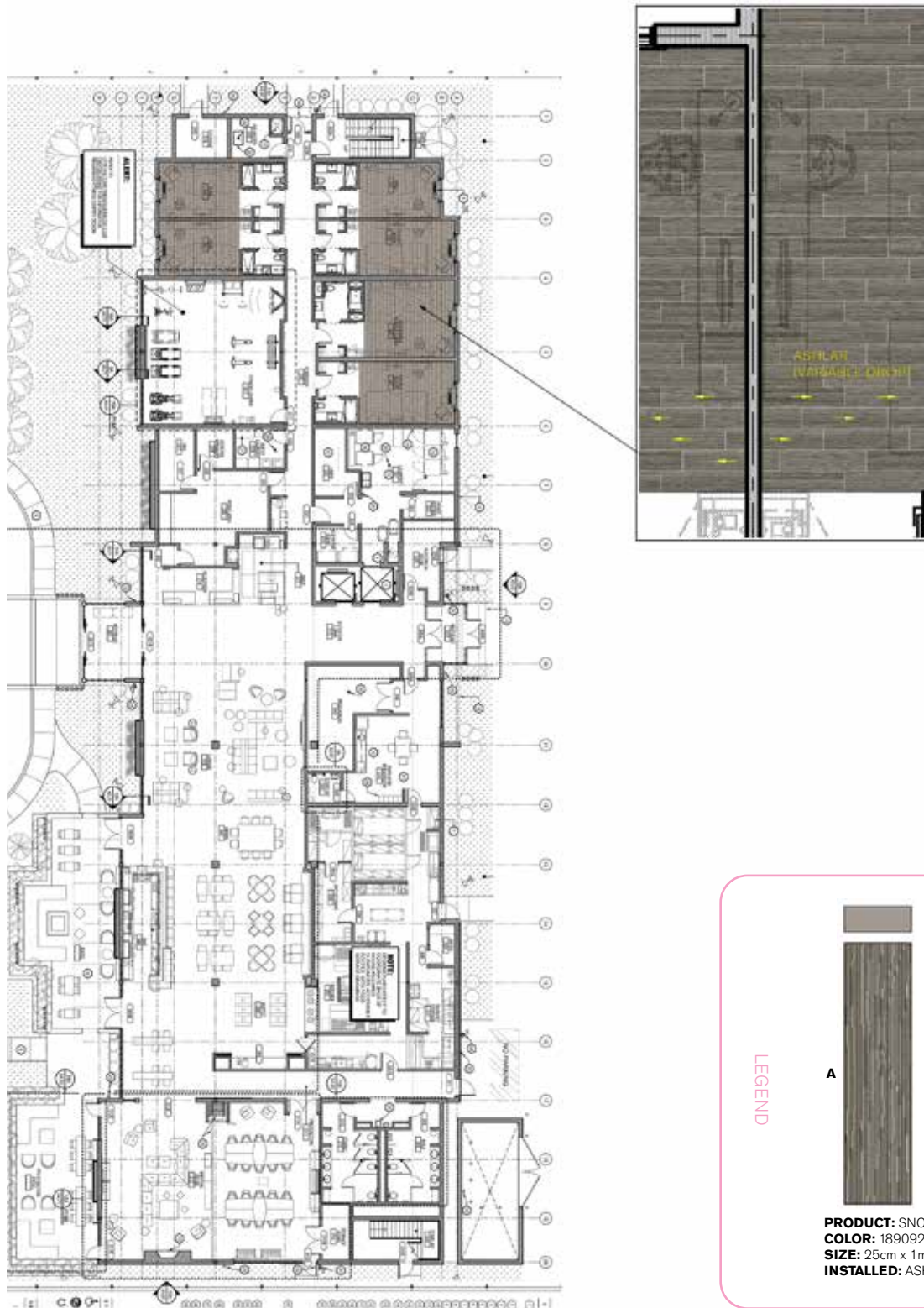


Guest Room Product	Hilton Spec. #	Sample #	Color #	Size	Installation
Snow Moon	C-01	268520-134	189092	25cm x 1m	Ashlar
Installation Specifications	Description				
XL2000 Plus	Adhesive				

GUEST ROOM INSTALLATION PLAN

Interface Hospitality

All quantities are estimates only and are based on plans provided. Site measurements and field verifications are recommended to ensure accuracy. These quantities are not intended to be used for material ordering purposes. Since waste factors may vary by installer, actual ordering quantities are the responsibility of your flooring contractor.



Bloom Meeting Room Prototype Order Information

CONTACT: Sofia Davila sofia.davila@interface.com | 347.633.0577 or your local Account Executive

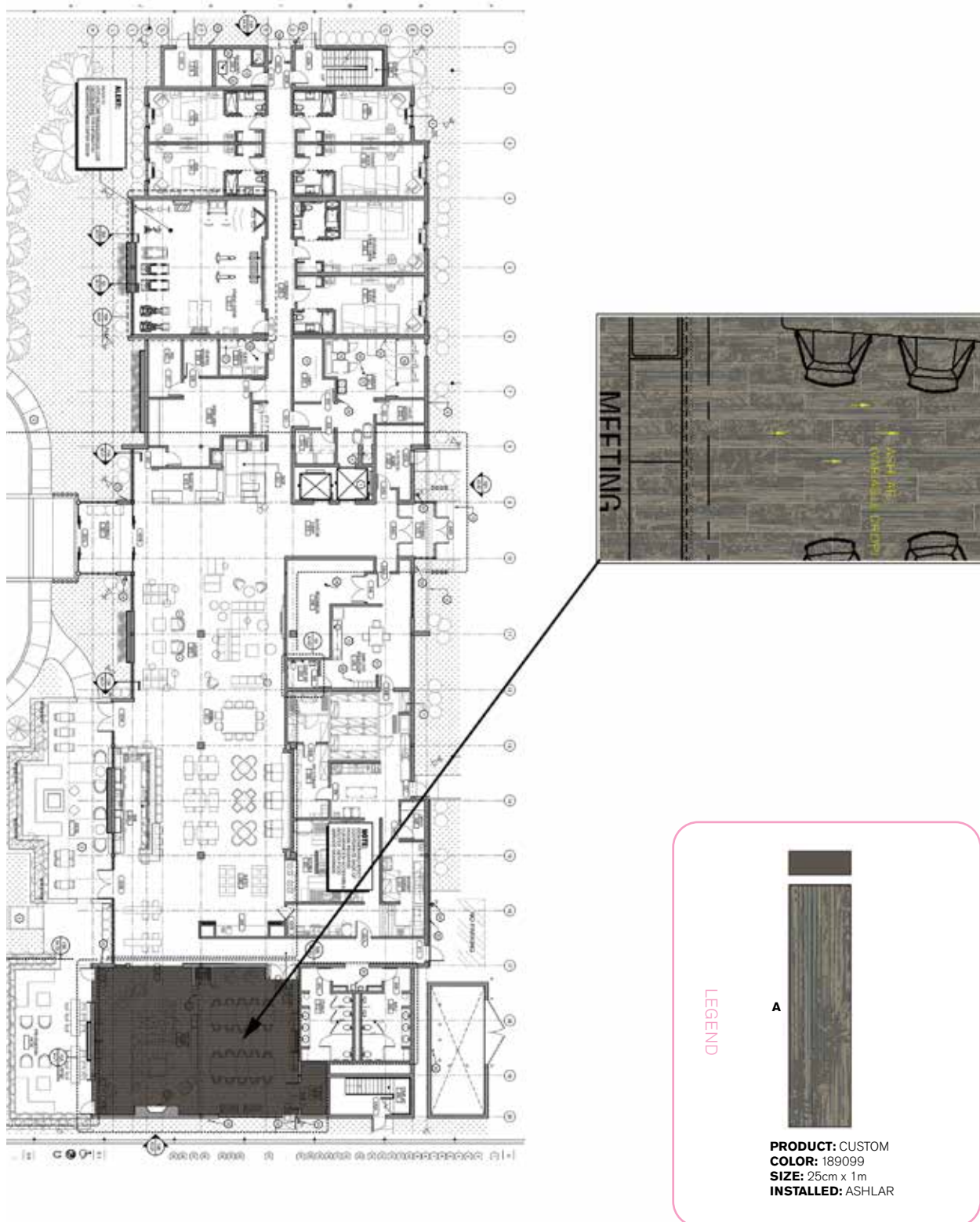


Meeting Room Product	Hilton Spec. #	Sample #	Color #	Size	Installation
Custom	C-13	268520-128	189099	25cm x 1m	Ashlar
Installation Specifications	Description				
XL2000 Plus	Adhesive				

MEETING ROOM INSTALLATION PLAN

Interface Hospitality

All quantities are estimates only and are based on plans provided. Site measurements and field verifications are recommended to ensure accuracy. These quantities are not intended to be used for material ordering purposes. Since waste factors may vary by installer, actual ordering quantities are the responsibility of your flooring contractor.



Bloom Break Room Prototype Order Information

CONTACT: Sofia Davila sofia.davila@interface.com | 347.633.0577 or your local Account Executive



Break Room Product	Hilton Spec. #	Color #	Size	Installation
Natural Woodgrains LVT	C-15	A00204 Beech	25cm x 1m	Ashlar
Installation Specifications	Description			
XL2000 Plus	Adhesive			

BREAK ROOM INSTALLATION PLAN

Interface Hospitality

All quantities are estimates only and are based on plans provided. Site measurements and field verifications are recommended to ensure accuracy. These quantities are not intended to be used for material ordering purposes. Since waste factors may vary by installer, actual ordering quantities are the responsibility of your flooring contractor.



LEGEND

A

PRODUCT: NATURAL WOODGRAINS
COLOR: A00204 BEECH
SIZE: 25cm x 1m
INSTALLED: ASHLAR

Bloom Office Prototype Order Information

CONTACT: Sofia Davila sofia.davila@interface.com | 347.633.0577 or your local Account Executive

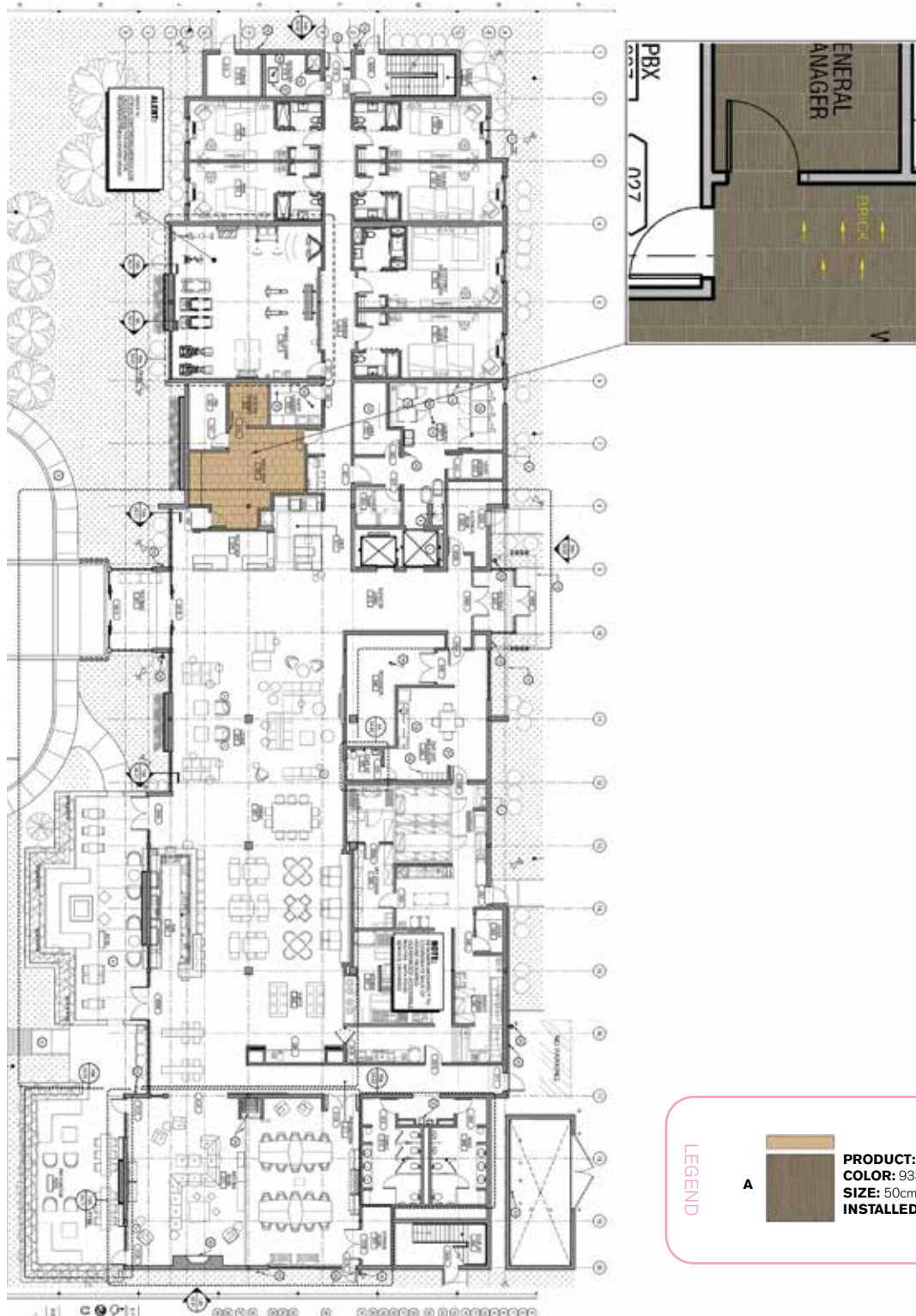


Office Product	Hilton Spec. #	Color #	Size	Installation
Platform	C-14	9332 Soapstone	50cm x 50cm	Brick
Installation Specifications	Description			
XL2000 Plus	Adhesive			

OFFICE INSTALLATION PLAN

Interface Hospitality

All quantities are estimates only and are based on plans provided. Site measurements and field verifications are recommended to ensure accuracy. These quantities are not intended to be used for material ordering purposes. Since waste factors may vary by installer, actual ordering quantities are the responsibility of your flooring contractor.



Revive Lobby Prototype Order Information

CONTACT: Sofia Davila sofia.davila@interface.com | 347.633.0577 or your local Account Executive

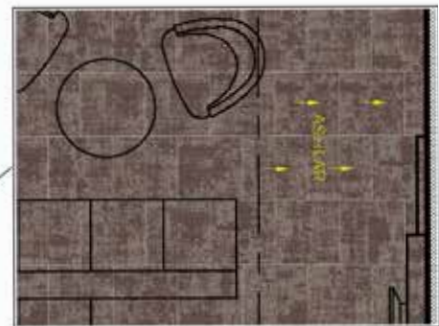
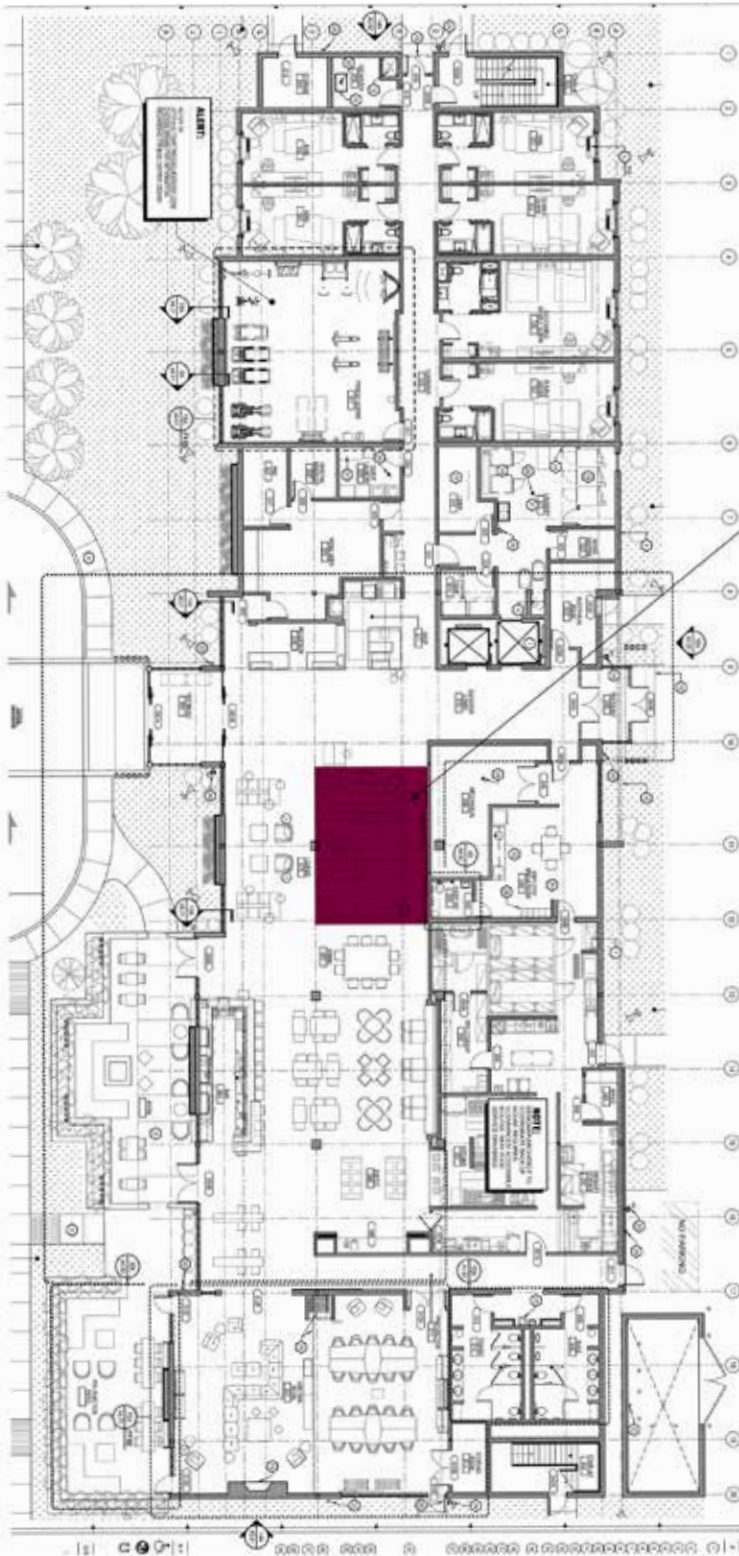


Lobby Product	Hilton Spec. #	Sample #	Color #	Size	Installation
Cloud Cover	C-10	265520-094	189093	50cm x 50cm	Ashlar
Installation Specifications	Description				
XL2000 Plus	Adhesive				

LOBBY INSTALLATION PLAN

Interface Hospitality

All quantities are estimates only and are based on plans provided. Site measurements and field verifications are recommended to ensure accuracy. These quantities are not intended to be used for material ordering purposes. Since waste factors may vary by installer, actual ordering quantities are the responsibility of your flooring contractor.



LEGEND

A



PRODUCT: CLOUD COVER
COLOR: 189093
SIZE: 25cm x 1m
INSTALLED: ASHLAR

Revive Corridor Prototype Order Information

CONTACT: Sofia Davila sofia.davila@interface.com | 347.633.0577 or your local Account Executive



Corridor Products	Hilton Spec. #	Sample #	Color #	Size	Installation
Custom	C-11	265520-107	189100	25cm x 1 m	Ashlar

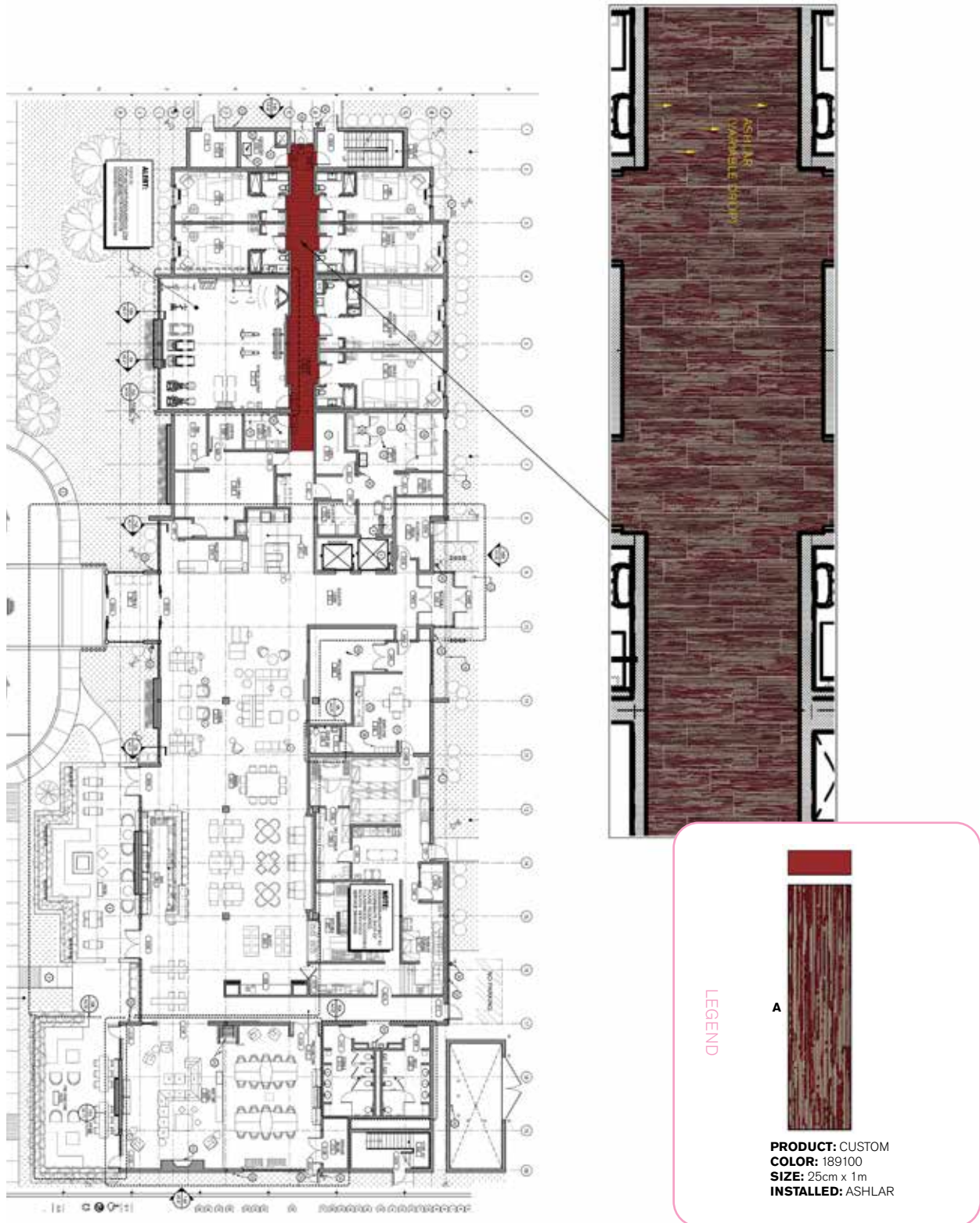
Stair Products	Hilton Spec. #	Sample #	Color #	Backing	Description
Custom	C-16	265520-107	189100	Glasbac	Stair Landaing
Custom	C-16	265520-107	189100	Unbacked Sheet Goods	Stair Carpet

Installation Specifications	Description
XL2000 Plus	Adhesive

CORRIDOR INSTALLATION PLAN

Interface Hospitality

All quantities are estimates only and are based on plans provided. Site measurements and field verifications are recommended to ensure accuracy. These quantities are not intended to be used for material ordering purposes. Since waste factors may vary by installer, actual ordering quantities are the responsibility of your flooring contractor.



Revive Guest Room Prototype Order Information

CONTACT: Sofia Davila sofia.davila@interface.com | 347.633.0577 or your local Account Executive

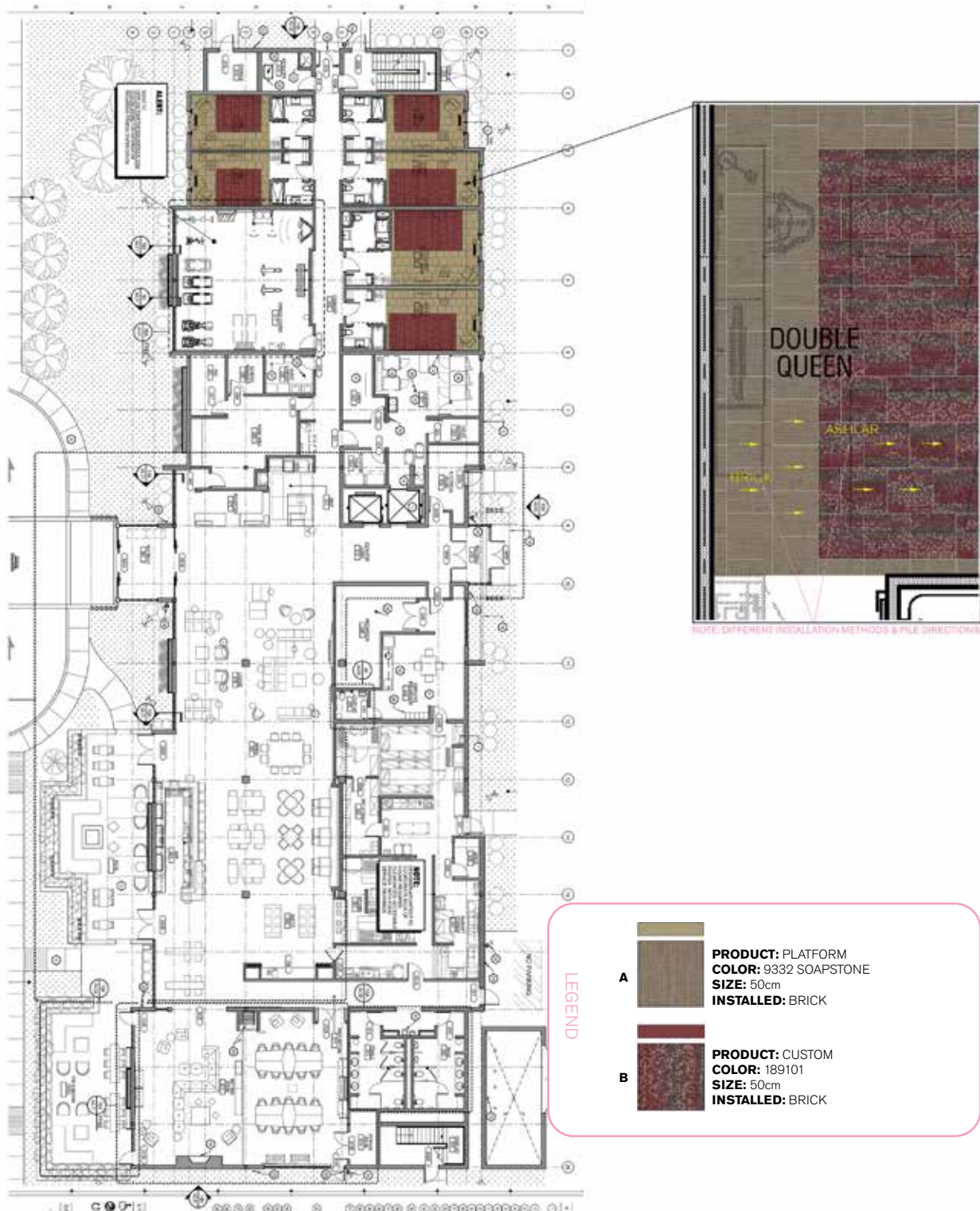


Guest Room Product	Hilton Spec. #	Sample #	Color #	Size	Installation
Platform A	C-01	265520-102	189095	50cm x 50cm	Brick
Custom AE310 B	C-02	265520-105	189101	50cm x 50cm	Ashlar
Installation Specifications	Description				
XL2000 Plus	Adhesive				

GUEST ROOM INSTALLATION PLAN

Interface Hospitality

All quantities are estimates only and are based on plans provided. Site measurements and field verifications are recommended to ensure accuracy. These quantities are not intended to be used for material ordering purposes. Since waste factors may vary by installer, actual ordering quantities are the responsibility of your flooring contractor.



Revive Meeting Room Prototype Order Information

CONTACT: Sofia Davila sofia.davila@interface.com | 347.633.0577 or your local Account Executive

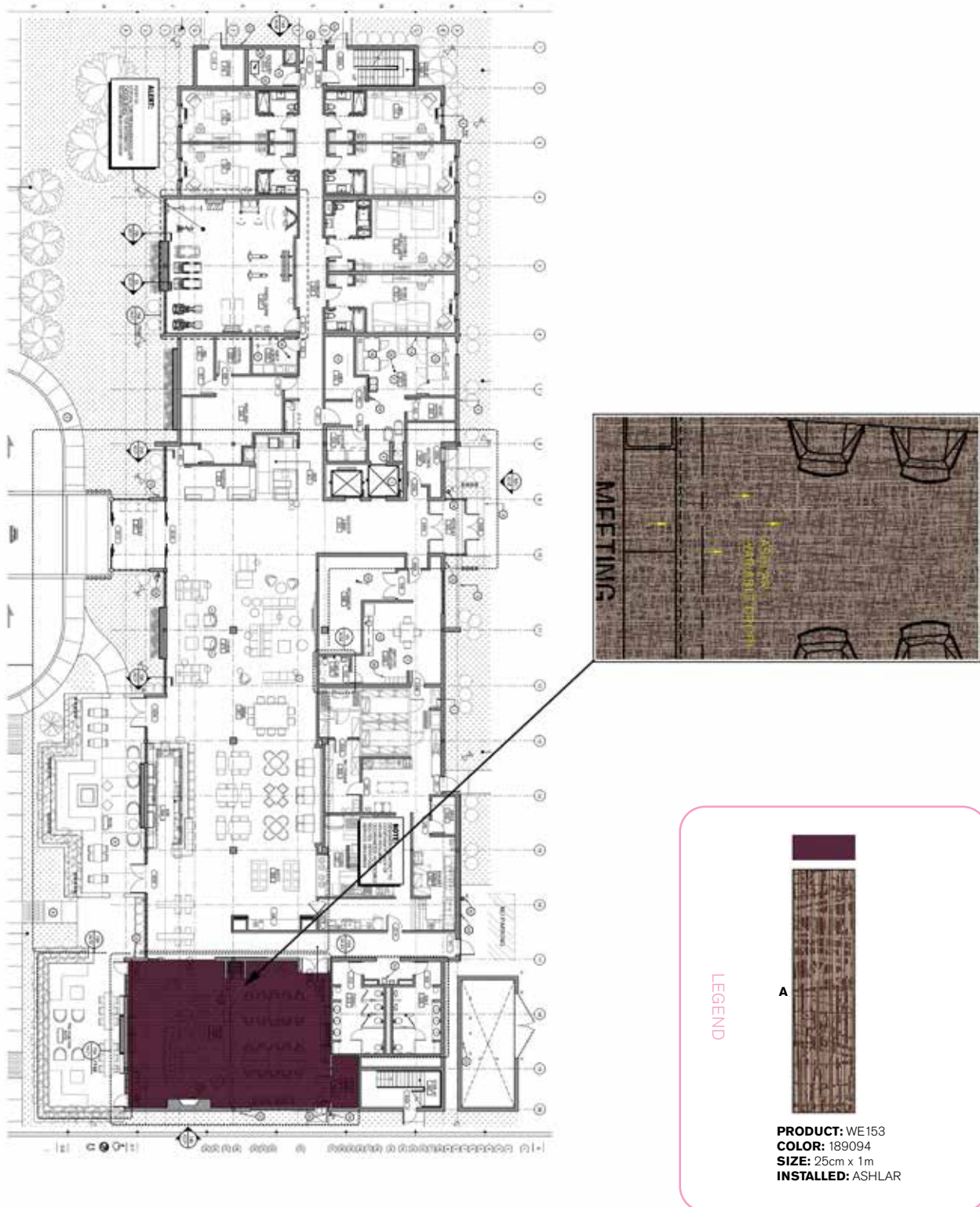


Meeting Room Product	Hilton Spec. #	Sample #	Color #	Size	Installation
WE153	C-13	265520-108	189094	25cm x 1m	Ashlar
Installation Specifications	Description				
XL2000 Plus	Adhesive				

MEETING ROOM INSTALLATION PLAN

Interface Hospitality

All quantities are estimates only and are based on plans provided. Site measurements and field verifications are recommended to ensure accuracy. These quantities are not intended to be used for material ordering purposes. Since waste factors may vary by installer, actual ordering quantities are the responsibility of your flooring contractor.



Revive Break Room Prototype Order Information

CONTACT: Sofia Davila sofia.davila@interface.com | 347.633.0577 or your local Account Executive

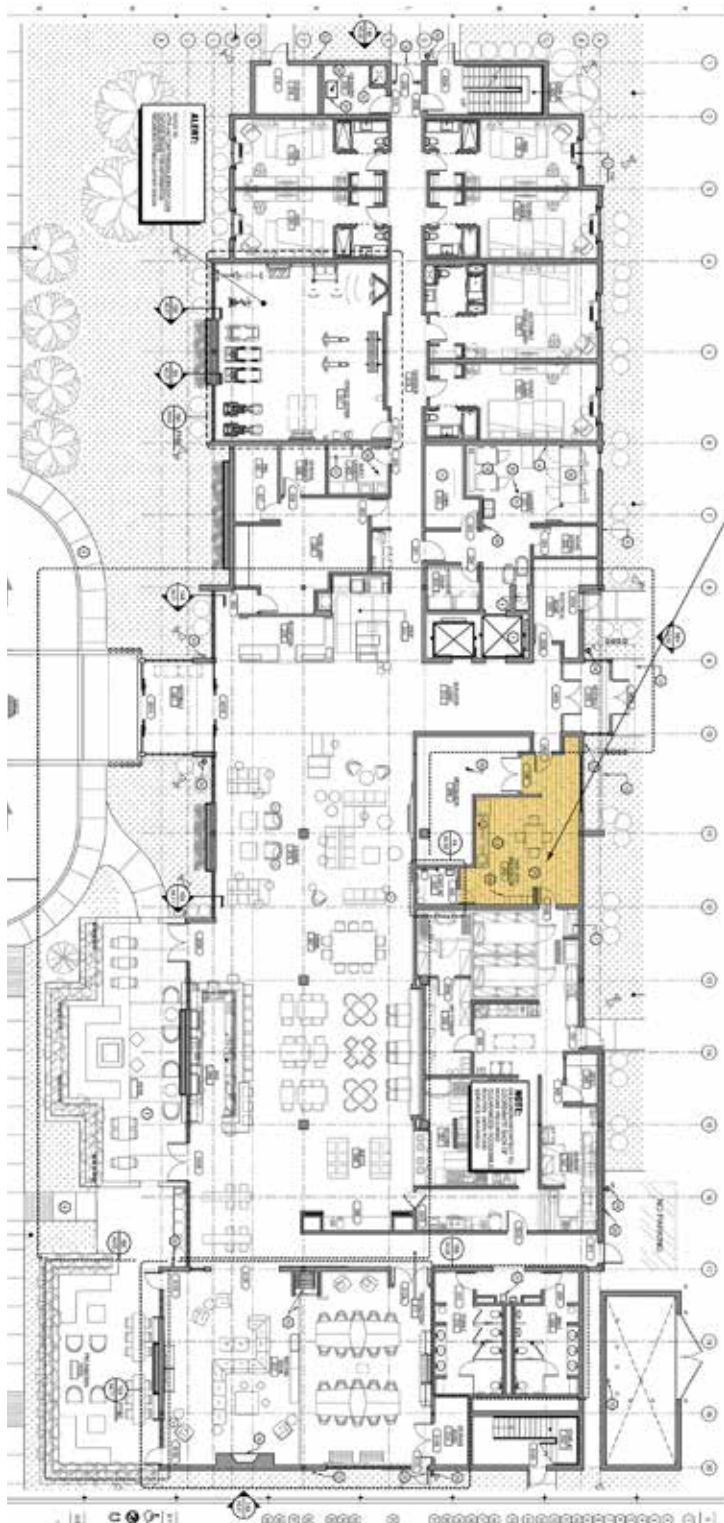


Break Room Product	Hilton Spec. #	Color #	Size	Installation
Natural Woodgrains LVT	C-15	A00204 Beech	25cm x 1m	Ashlar
Installation Specifications	Description			
XL2000 Plus	Adhesive			

BREAK ROOM INSTALLATION PLAN

Interface Hospitality

All quantities are estimates only and are based on plans provided. Site measurements and field verifications are recommended to ensure accuracy. These quantities are not intended to be used for material ordering purposes. Since waste factors may vary by installer, actual ordering quantities are the responsibility of your flooring contractor.



Revive Office Prototype Order Information

CONTACT: Sofia Davila sofia.davila@interface.com | 347.633.0577 or your local Account Executive

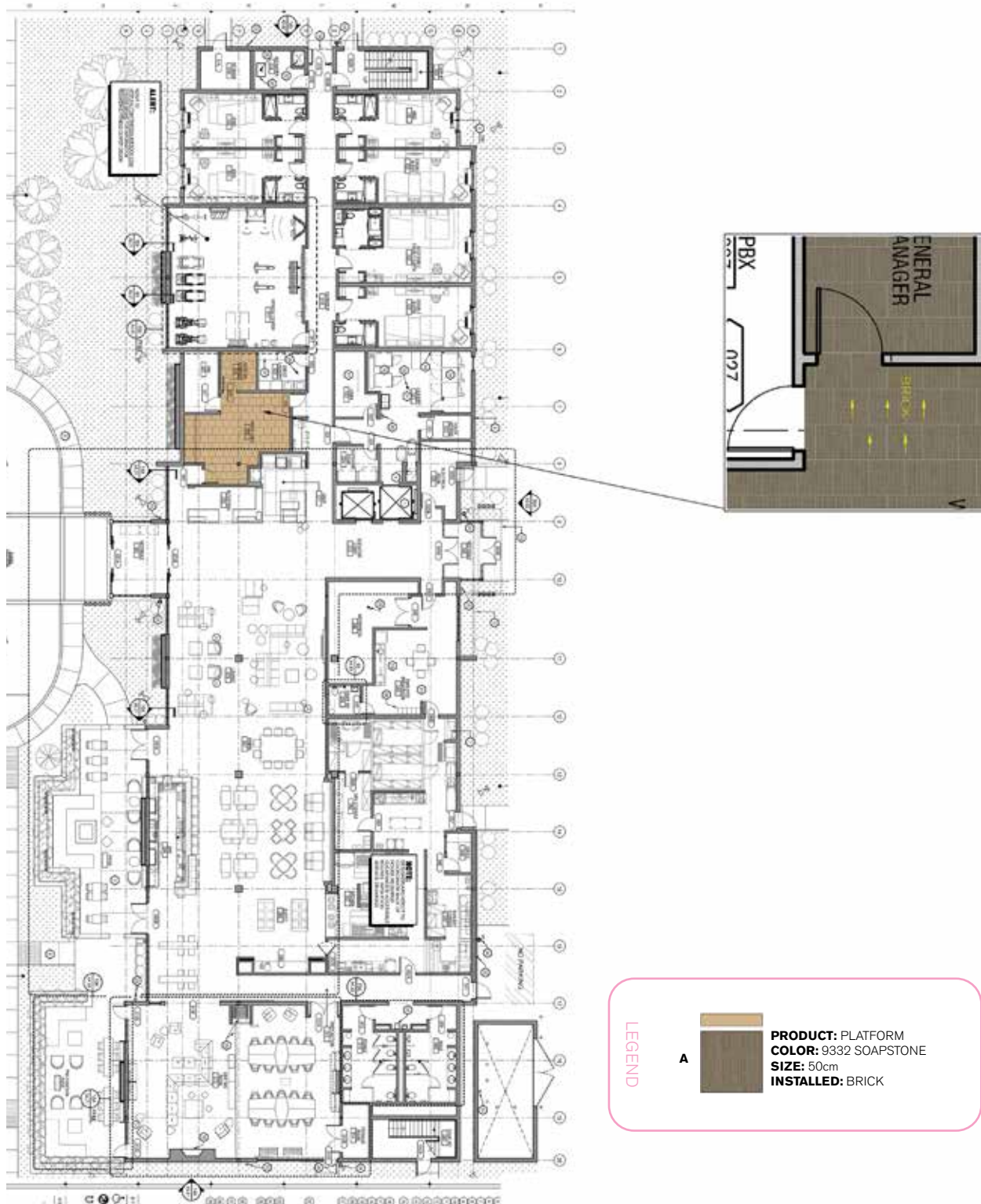


Office Product	Hilton Spec. #	Color #	Size	Installation
Platform	C-14	9332 Soapstone	50cm x 50cm	Brick
Installation Specifications	Description			
XL2000 Plus	Adhesive			

OFFICE INSTALLATION PLAN

Interface Hospitality

All quantities are estimates only and are based on plans provided. Site measurements and field verifications are recommended to ensure accuracy. These quantities are not intended to be used for material ordering purposes. Since waste factors may vary by installer, actual ordering quantities are the responsibility of your flooring contractor.



Chelsea Prototype Order Information

CONTACT: Sofia Davila sofia.davila@interface.com | 347.633.0577 or your local Account Executive



Reception Desk Product	Hilton Spec. #	Sample #	Color #	Size	Installation
Exposed	(A) CP-01	256794-189	188435	50cm x 50cm	Non Directional

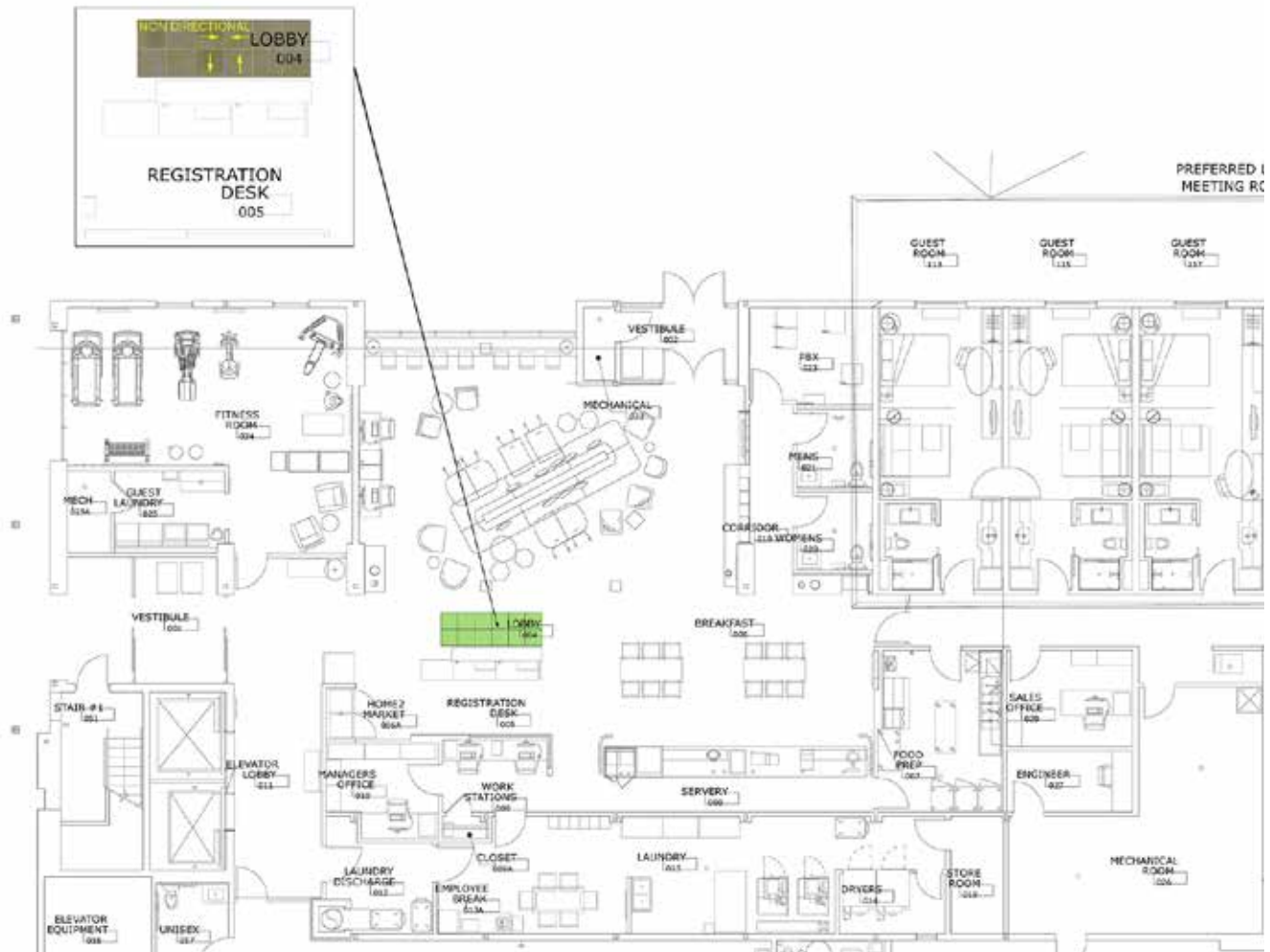
Boardroom Product	Hilton Spec. #	Sample #	Color #	Size	Installation
Exposed	(A) CP-02	256794-189	188435	50cm x 50cm	Non Directional

Installation Specifications	Description
XL2000 Plus	Adhesive

RECEPTION DESK INSTALLATION PLAN

Interface Hospitality

All quantities are estimates only and are based on plans provided. Site measurements and field verifications are recommended to ensure accuracy. These quantities are not intended to be used for material ordering purposes. Since waste factors may vary by installer, actual ordering quantities are the responsibility of your flooring contractor.



LEGEND

A



PRODUCT: EXPOSED
COLOR: 188435
SIZE: 50cm
INSTALLED: NON DIRECTIONAL

Chelsea Corridor Prototype Order Information

CONTACT: Sofia Davila sofia.davila@interface.com | 347.633.0577 or your local Account Executive



Corridor Products	Hilton Spec. #	Sample #	Color #	Size	Installation
AE311 A	(A) CP-02B	256794-158	188431	50cm x 50cm	Pattern by Tile
AE315 B	(A) CP-02A	256794-155	188429	50cm x 50cm	Pattern by Tile
AE311 C	(A) CP-02C	256794-161	188432	50cm x 50cm	Pattern by Tile
Viva Colores 4" Base	(A) CB-01		106048 Ostra	4" x 25' Rolls	
Stair Products	Hilton Spec. #	Sample #	Color #	Backing	Description
AE315	(A) CP-07	256794-155	188429	Glasbac	Stair Landaing
AE315	(A) CP-06	256794-155	188429	Unbacked Sheet Goods	Stair Carpet
Installation Specifications	Description				
XL2000 Plus	Adhesive				

CORRIDOR INSTALLATION PLAN

Interface Hospitality

All quantities are estimates only and are based on plans provided. Site measurements and field verifications are recommended to ensure accuracy. These quantities are not intended to be used for material ordering purposes. Since waste factors may vary by installer, actual ordering quantities are the responsibility of your flooring contractor.



Chelsea Guest Room Prototype Order Information

CONTACT: Sofia Davila sofia.davila@interface.com | 347.633.0577 or your local Account Executive



Guest Room Product	Hilton Spec. #	Sample#	Color #	Size	Installation
Platform A	(A) CP-03		9332 Soapstone	50cm x 50cm	Brick
Custom B	(A) CP-04	256794-176	188274	50cm x 50cm	Brick
Installation Specifications	Description				
XL2000 Plus	Adhesive				

GUEST ROOM INSTALLATION PLAN

Interface Hospitality

All quantities are estimates only and are based on plans provided. Site measurements and field verifications are recommended to ensure accuracy. These quantities are not intended to be used for material ordering purposes. Since waste factors may vary by installer, actual ordering quantities are the responsibility of your flooring contractor.



Tribeca Prototype Order Information

CONTACT: Sofia Davila sofia.davila@interface.com | 347.633.0577 or your local Account Executive



Reception Desk Product	Hilton Spec. #	Sample #	Color #	Size	Installation
Exposed	(B) CP-01	256794-152	188434	50cm x 50cm	Non Directional

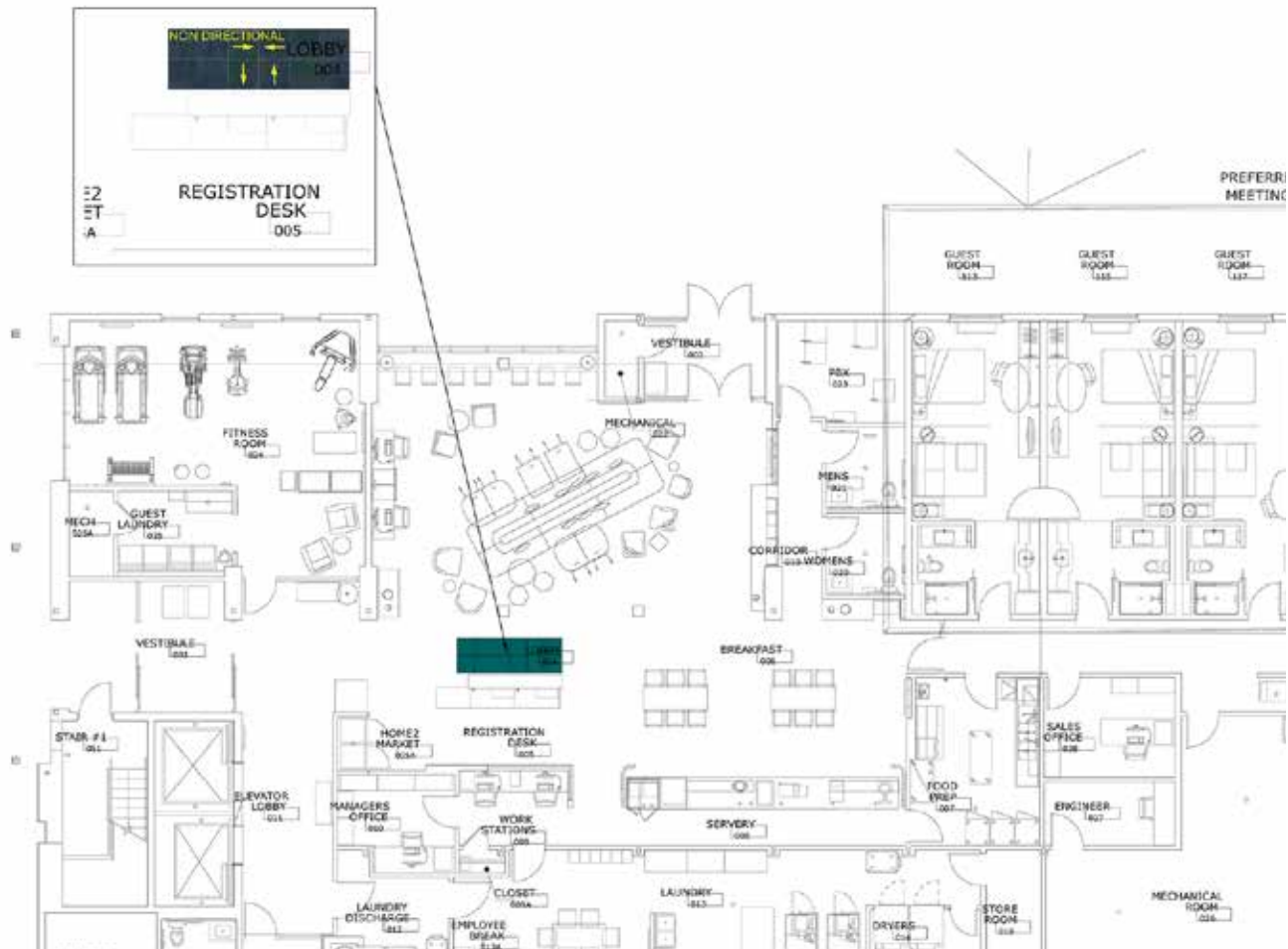
Boardroom Product	Hilton Spec. #	Sample #	Color #	Size	Installation
Exposed	(B) CP-02	256794-152	188434	50cm x 50cm	Non Directional

Installation Specifications	Description
XL2000 Plus	Adhesive

RECEPTION DESK INSTALLATION PLAN

Interface Hospitality

All quantities are estimates only and are based on plans provided. Site measurements and field verifications are recommended to ensure accuracy. These quantities are not intended to be used for material ordering purposes. Since waste factors may vary by installer, actual ordering quantities are the responsibility of your flooring contractor.



LEGEND

A



PRODUCT: EXPOSED
COLOR: 188434
SIZE: 50cm
INSTALLED: NON DIRECTIONAL

Tribeca Corridor Prototype Order Information

CONTACT: Sofia Davila sofia.davila@interface.com | 347.633.0577 or your local Account Executive



Corridor Products	Hilton Spec. #	Sample #	Color #	Size	Installation
AE311 A	(B) CP-02AB	256794-158	188431	50cm x 50cm	Pattern by Tile
AE315 B	(B) CP-02A	256794-156	188430	50cm x 50cm	Pattern by Tile
AE311 C	(B) CP-02C	256794-164	188433	50cm x 50cm	Pattern by Tile
Viva Colores 4" Base	(B) CB-01		106048 Ostra	4" x 25' Rolls	
Stair Products	Hilton Spec. #	Sample #	Color #	Backing	Description
AE315	(B) CP-07	256794-156	188430	Glasbac	Stair Landing
AE315	(B) CP-06	256794-156	188430	Unbacked Sheet Goods	Stair Carpet
Installation Specifications	Description				
XL2000 Plus	Adhesive				

Interface® Hospitality

NOTE: ASHLAR INSTALL FILE DIRECTIONAL IS PERPENDICULAR TO LENGTH OF WALL

PATTERN BY TILE

CORRIDOR 133

PREFERRED LOCATION FOR MEETING ROOM OPTIONS

LEGEND

A		PRODUCT: AE311 COLOR: 188431 SIZE: 50cm INSTALLED: ASHLAR
B		PRODUCT: AE315 COLOR: 188430 SIZE: 50cm INSTALLED: ASHLAR
C		PRODUCT: AE311 COLOR: 188433 SIZE: 50cm INSTALLED: ASHLAR

NOTE: ASHLAR INSTALL FILE DIRECTIONAL IS PERPENDICULAR TO LENGTH OF WALL

Tribeca Guest Room Prototype Order Information

CONTACT: Sofia Davila sofia.davila@interface.com | 347.633.0577 or your local Account Executive



Guest Room Product	Hilton Spec. #	Sample#	Color #	Size	Installation
Platform A	(B) CP-03		9332 Soapstone	50cm x 50cm	Brick
Custom B	(B) CP-04	256794-187	188436	50cm x 50cm	Brick
Installation Specifications	Description				
XL2000 Plus	Adhesive				

GUEST ROOM INSTALLATION PLAN

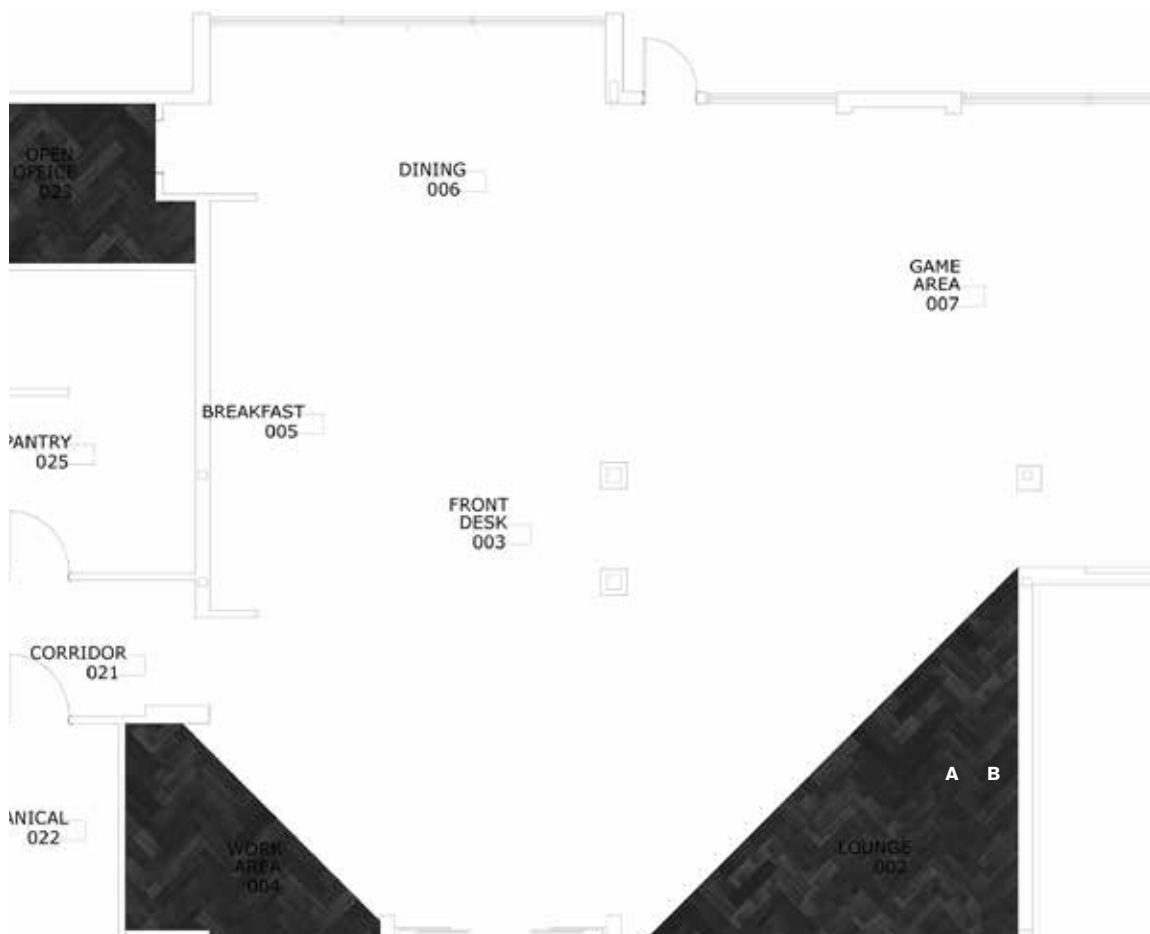
Interface Hospitality

All quantities are estimates only and are based on plans provided. Site measurements and field verifications are recommended to ensure accuracy. These quantities are not intended to be used for material ordering purposes. Since waste factors may vary by installer, actual ordering quantities are the responsibility of your flooring contractor.



Tru Lobby Prototype Order Information

CONTACT: Sofia Davila sofia.davila@interface.com | 347.633.0577 or your local Account Executive



Lobby Products	Hilton Spec#	Color #	Size	Installation
AE311 A	C-05-A.1	104674 Smoke	25cm x 1m	Pattern By Tile
AE311 B	C-05-A.2	104675 Ink	25cm x 1m	Pattern By Tile

Installation Specifications	Description
XL2000 Plus	Adhesive

LOBBY INSTALLATION PLAN

Interface Hospitality

All quantities are estimates only and are based on plans provided. Site measurements and field verifications are recommended to ensure accuracy. These quantities are not intended to be used for material ordering purposes. Since waste factors may vary by installer, actual ordering quantities are the responsibility of your flooring contractor.



Tru Corridor Prototype Order Information

CONTACT: Sofia Davila sofia.davila@interface.com | 347.633.0577 or your local Account Executive



Corridor Products	Hilton Spec#	Color #	Size	Installation
AE315 A	C-06-A.3	105814 Ink Magenta	25cm x 1m	Pattern By Tile
AE311 B	C-06-A.2	104675 Ink	25cm x 1m	Pattern By Tile
AE311 C	C-06-A.1	104674 Smoke	25cm x 1m	Pattern By Tile

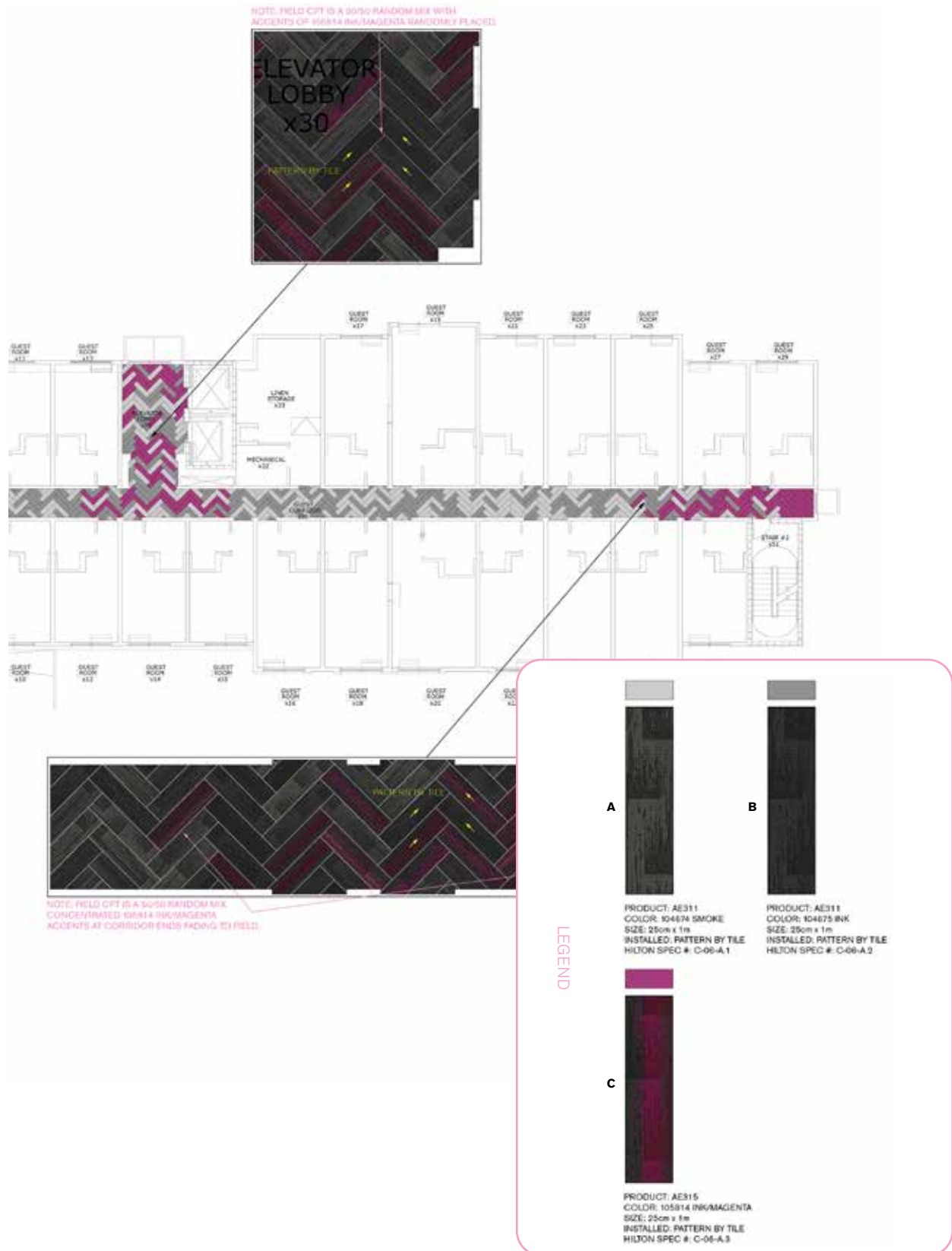
Stair Products	Color #	Backing	Description
AE311	105814	Glasbac	Stair Landing
AE311	105814	Unbacked Sheet Goods	Stair Carpet

Installation Specifications	Description
XL2000 Plus	Adhesive

CORRIDOR INSTALLATION PLAN

Interface Hospitality

All quantities are estimates only and are based on plans provided. Site measurements and field verifications are recommended to ensure accuracy. These quantities are not intended to be used for material ordering purposes. Since waste factors may vary by installer, actual ordering quantities are the responsibility of your flooring contractor.



Tru Guest Room Prototype Order Information

CONTACT: Sofia Davila sofia.davila@interface.com | 347.633.0577 or your local Account Executive



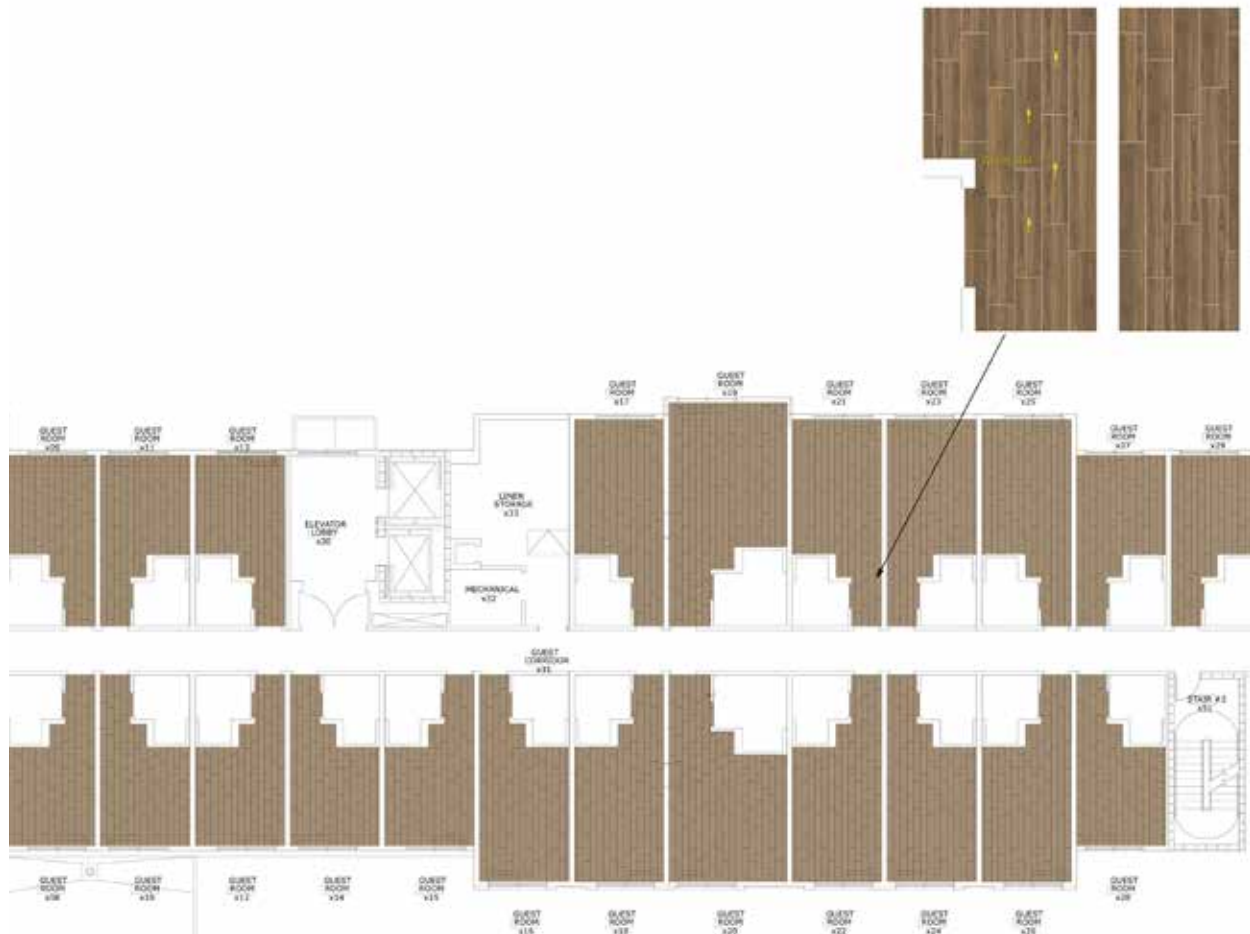
Guestroom Products	Hilton Spec#	Color #	Size	Installation
LVT Natural Woodgrain A	VF-06A	A00204 Beech	25cm x 1m	Random Ashlar
Installation Specifications	Description			
XL2000 Plus	Adhesive			
Sound Choice Acoustic Backing	LVT Backing			

*Same LVT is used for Glimmer, Spark, Burst Yellow, and Burst Blue.

GUEST ROOM INSTALLATION PLAN

Interface Hospitality

All quantities are estimates only and are based on plans provided. Site measurements and field verifications are recommended to ensure accuracy. These quantities are not intended to be used for material ordering purposes. Since waste factors may vary by installer, actual ordering quantities are the responsibility of your flooring contractor.



LEGEND

A



PRODUCT: NATURAL WOODGRAINS
COLOR: A00204 BEECH
SIZE: 25cm x 1m
INSTALLED: ASHLAR
HILTON SPEC #: VF-06A