

Interface®

HAMPTON INN BY HILTON



APPROVED PROTOTYPES

Hampton Inn by Hilton
Hilton Garden Inn
Home2 Suites
Tru by Hilton

WHY INTERFACE HOSPITALITY?

Interface Hospitality is a **HILTON HOTELS** approved supplier of carpet tile and LVT. We are currently approved on the following prototypes:

- Hampton Inn by Hilton
- Hilton Garden Inn
- Home2 Suites
- Tru by Hilton



SMART, EFFICIENT, AND BUILT TO LAST

Seamless Installation & Design Flexibility

Interface modular flooring tiles are designed for effortless installation with systems like TacTiles®—our no-glue solution that reduces VOCs and waste. Choose from multiple sizes and patterns to create tailored designs that fit your needs while optimizing material usage.

Cost Efficiency, Built-In

Reduce hidden costs with modular tiles—no roll sizes, no wasteful cuts, and an average of only 3-4% waste compared to broadloom's 14%. Our selective replacement system minimizes disruption, allowing you to replace flooring in stages and save up to 50% on replacement costs.

Durability You Can Count On

Every product is backed by a 15-year warranty, combining innovative features like Intersept® mold protection and Protekt2™ stain resistance for unparalleled longevity. With modular carpet, you're investing in a solution that performs and saves in the long run.



DESIGNED FOR PERFORMANCE AND PEOPLE

Innovative Fibers for Vibrant, Sustainable Style

All Interface carpet tiles are made from 100% solution-dyed nylon—engineered for vibrant, fade-resistant color without the need for water or harmful chemicals in production.

The Power of Integrated Systems

Interface tiles span a variety of sizes and textures, enabling endless creative possibilities. Our modular designs seamlessly integrate with LVT for holistic flooring solutions without transition strips, redefining design flexibility.

Health-Conscious Choices

Our Intersept[®] treatment guarantees mold protection and uses no halogens, heavy metals, or harmful chemicals. It's EPA-approved for safe use, ensuring healthier spaces for your guests and teams.

SUSTAINABILITY & END-OF-LIFE SOLUTIONS

Transparency at Every Step

Sustainability comes standard. With third-party certifications and 99% renewable energy powering our U.S. manufacturing, Interface delivers flooring that's both high-performing and environmentally conscious.

Recycling Made Simple with ReEntry[®]

Through ReEntry[®], we reclaim and recycle used carpet tiles and Sound Choice[™] LVT, keeping valuable materials out of landfills. As North America's only third-party-certified flooring recycling program, we set the benchmark for responsible end-of-life solutions.

Smarter Installations for a Smaller Footprint

TacTiles[®] eliminate the need for adhesives with carpet tiles, cutting installation waste by 90%. Combined with modular flooring's reduced waste profile, this innovation ensures your project leaves a lighter environmental footprint.

CASUAL LOBBY PROTOTYPE ORDER INFORMATION

Carpet tiles **SAVE APPROXIMATELY 18%-20% IN PRODUCT WASTE** versus broadloom, based on prototype layout.

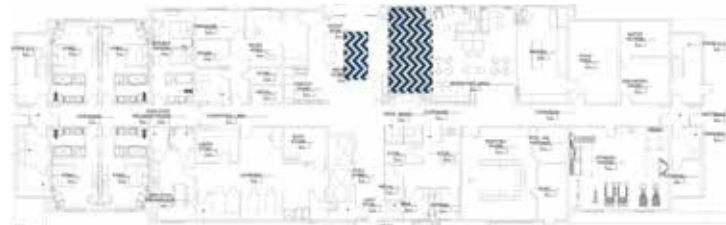


PRODUCT	ITEM#	COLOR#	SAMPLE#	SIZE	INSTALLATION
A Ground Waves	C-10 C-1	257617-089	189122	25 cm x 1 m	Herringbone
B Ground Waves	C-10 C-2	257617-091	189108	25 cm x 1 m	Herringbone

INSTALLATION SPECIFICATIONS	DESCRIPTION
XL2000 PLUS Adhesive	Double stick install

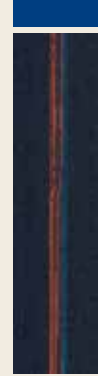
CASUAL LOBBY INSTALLATION PLAN

All quantities are estimates only and are based on plans provided. Site measurements and field verifications are recommended to ensure accuracy. These quantities are not intended to be used for material ordering purposes. Since waste factors may vary by installer, actual ordering quantities are the responsibility of your flooring contractor.



LEGEND

A



PRODUCT: Ground Waves
ITEM: C-10 C-1
COLOR/SAMPLE:
189122_257617-089
SIZE: 25 cm x 1 m
INSTALLED: Herringbone

B



PRODUCT: Ground Waves
ITEM: C-10 C-2
COLOR/SAMPLE:
189108_257617-091
SIZE: 25 cm x 1 m
INSTALLED: Herringbone

CASUAL CORRIDOR PROTOTYPE ORDER INFORMATION

Carpet tiles **SAVE APPROXIMATELY 18%-20% IN PRODUCT WASTE** versus broadloom, based on prototype layout.

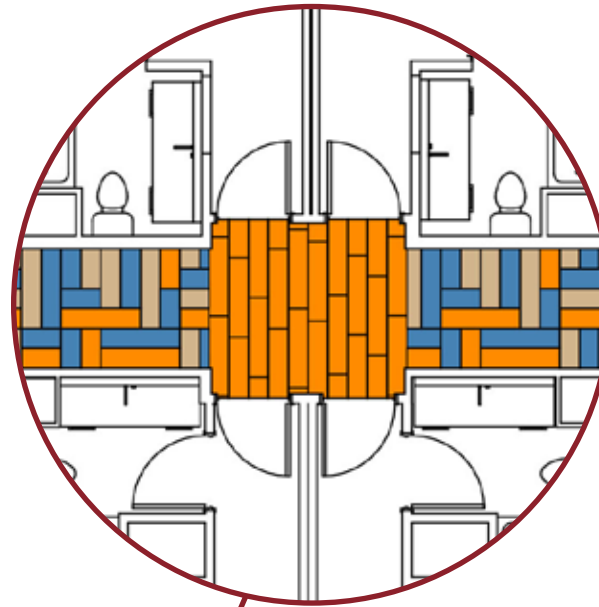


PRODUCT	ITEM#	COLOR#	SAMPLE#	SIZE	INSTALLATION
A Trio	C-11 C-1	268431-020	189113	25 cm x 1 m	Pattern by Tile
B Trio	C-11 C-2	268431-021	189112	25 cm x 1 m	Pattern by Tile
C GN160	C-11 C-3	268431-022	189111	25 cm x 1 m	Pattern by Tile
D Trio	C-11 C-1	268431-020	189113	25 cm x 1 m	Ashlar

INSTALLATION SPECIFICATIONS	DESCRIPTION
XL2000 PLUS Adhesive	Double stick install

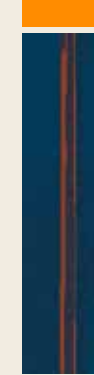
CASUAL CORRIDOR INSTALLATION PLAN

All quantities are estimates only and are based on plans provided. Site measurements and field verifications are recommended to ensure accuracy. These quantities are not intended to be used for material ordering purposes. Since waste factors may vary by installer, actual ordering quantities are the responsibility of your flooring contractor.



LEGEND

A



PRODUCT: Trio
ITEM: C-11 C-1
COLOR/SAMPLE:
 189113_268431-020
SIZE: 25 cm x 1 m
INSTALLED: Pattern by Tile

B



PRODUCT: Trio
ITEM: C-11 C-2
COLOR/SAMPLE:
 189112_268431-021
SIZE: 25 cm x 1 m
INSTALLED: Pattern by Tile

C



PRODUCT: GN160
ITEM: C-11 C-3
COLOR/SAMPLE:
 189111_268431-022
SIZE: 25 cm x 1 m
INSTALLED: Pattern by Tile

D



PRODUCT: Trio
ITEM: C-11 C-1
COLOR/SAMPLE:
 189113_268431-020
SIZE: 25 cm x 1 m
INSTALLED: Ashlar

CASUAL GUESTROOM PROTOTYPE ORDER INFORMATION

Carpet tiles **SAVE APPROXIMATELY 18%-20% IN PRODUCT WASTE** versus broadloom, based on prototype layout.

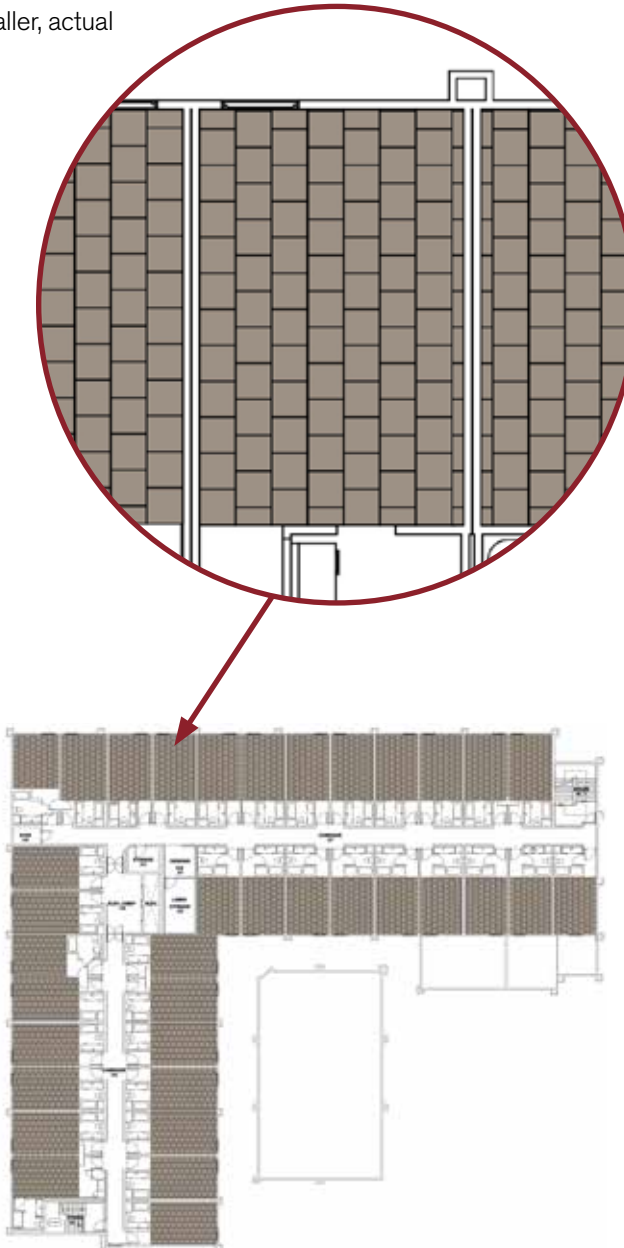


PRODUCT	ITEM#	COLOR#	SAMPLE#	SIZE	INSTALLATION
Main Line	C-01 C	268431-033	189109	50 cm x 50 cm	Brick

INSTALLATION SPECIFICATIONS	DESCRIPTION
XL2000 PLUS Adhesive	Double stick install

CASUAL GUESTROOM INSTALLATION PLAN

All quantities are estimates only and are based on plans provided. Site measurements and field verifications are recommended to ensure accuracy. These quantities are not intended to be used for material ordering purposes. Since waste factors may vary by installer, actual ordering quantities are the responsibility of your flooring contractor.



LEGEND



PRODUCT: Main Line
ITEM: C-01 C
COLOR/SAMPLE: 189109_268431-033
SIZE: 50 cm x 50 cm
INSTALLED: Brick

CASUAL MEETING ROOM PROTOTYPE ORDER INFORMATION

Carpet tiles **SAVE APPROXIMATELY 18%-20% IN PRODUCT WASTE** versus broadloom, based on prototype layout.

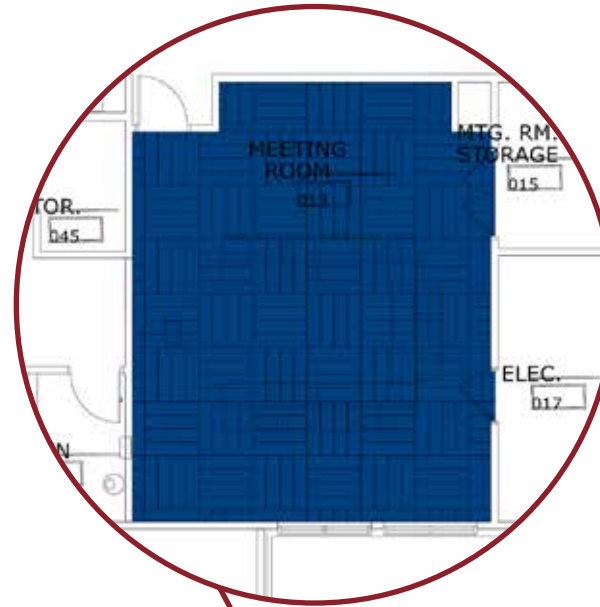


PRODUCT	ITEM#	COLOR#	SAMPLE#	SIZE	INSTALLATION
Ground Waves	C-12 C	257617-089	189122	25 cm x 1 m	Quarter Turn

INSTALLATION SPECIFICATIONS	DESCRIPTION
XL2000 PLUS Adhesive	Double stick install

CASUAL MEETING ROOM INSTALLATION PLAN

All quantities are estimates only and are based on plans provided. Site measurements and field verifications are recommended to ensure accuracy. These quantities are not intended to be used for material ordering purposes. Since waste factors may vary by installer, actual ordering quantities are the responsibility of your flooring contractor.



LEGEND



PRODUCT: Ground Waves
ITEM: C-12 C
COLOR/SAMPLE:
189122_257617-089
SIZE: 25 cm x 1 m
INSTALLED: Quarter Turn

CASUAL OFFICE PROTOTYPE ORDER INFORMATION

Carpet tiles **SAVE APPROXIMATELY 18%-20% IN PRODUCT WASTE** versus broadloom, based on prototype layout.

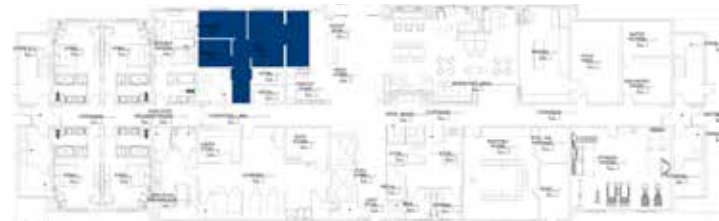
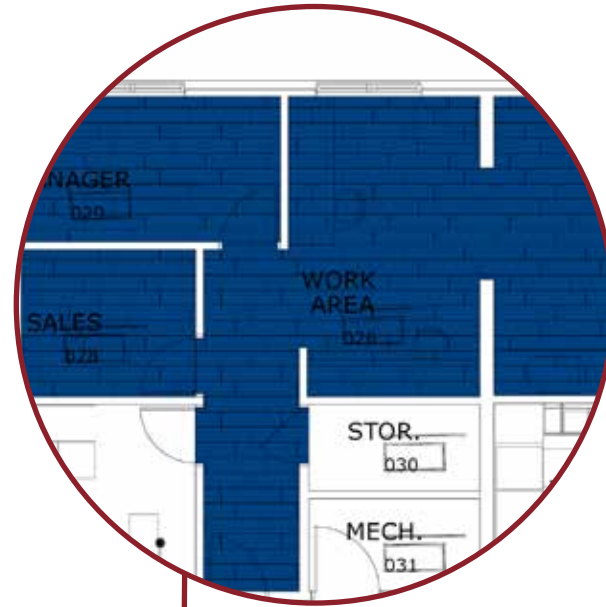


PRODUCT	ITEM#	COLOR#	SAMPLE#	SIZE	INSTALLATION
Ground Waves	C-13 C	257617-089	189122	25 cm x 1 m	Ashlar

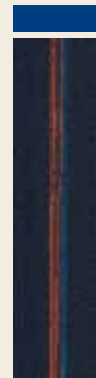
INSTALLATION SPECIFICATIONS	DESCRIPTION
XL2000 PLUS Adhesive	Double stick install

CASUAL OFFICE INSTALLATION PLAN

All quantities are estimates only and are based on plans provided. Site measurements and field verifications are recommended to ensure accuracy. These quantities are not intended to be used for material ordering purposes. Since waste factors may vary by installer, actual ordering quantities are the responsibility of your flooring contractor.



LEGEND



PRODUCT: Ground Waves
ITEM: C-13 C
COLOR/SAMPLE:
189122_257617-089
SIZE: 25 cm x 1 m
INSTALLED: Ashlar

CASUAL BREAKROOM PROTOTYPE ORDER INFORMATION

Carpet tiles **SAVE APPROXIMATELY 18%-20% IN PRODUCT WASTE** versus broadloom, based on prototype layout.

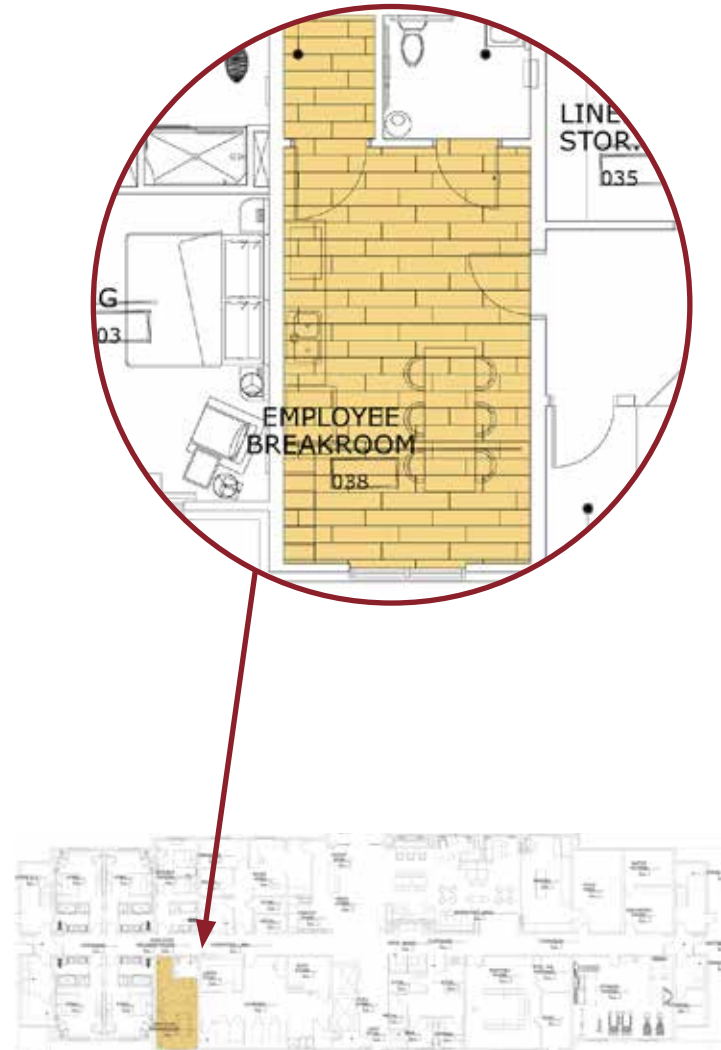


PRODUCT	ITEM#	COLOR#	SIZE	INSTALLATION
LVT Natural Woodgrains	LVT-15 C	A00204 Beech	25 cm x 1 m	Ashlar

INSTALLATION SPECIFICATIONS	DESCRIPTION
XL2000 PLUS Adhesive	Double stick install

CASUAL BREAKROOM INSTALLATION PLAN

All quantities are estimates only and are based on plans provided. Site measurements and field verifications are recommended to ensure accuracy. These quantities are not intended to be used for material ordering purposes. Since waste factors may vary by installer, actual ordering quantities are the responsibility of your flooring contractor.



LEGEND



PRODUCT: LVT Natural Woodgrains
ITEM: LVT-15 C
COLOR: A00204 Beech
SIZE: 25 cm x 1 m
INSTALLED: Ashlar

CONFIDENT LOBBY PROTOTYPE ORDER INFORMATION

Carpet tiles **SAVE APPROXIMATELY 18%-20% IN PRODUCT WASTE** versus broadloom, based on prototype layout.

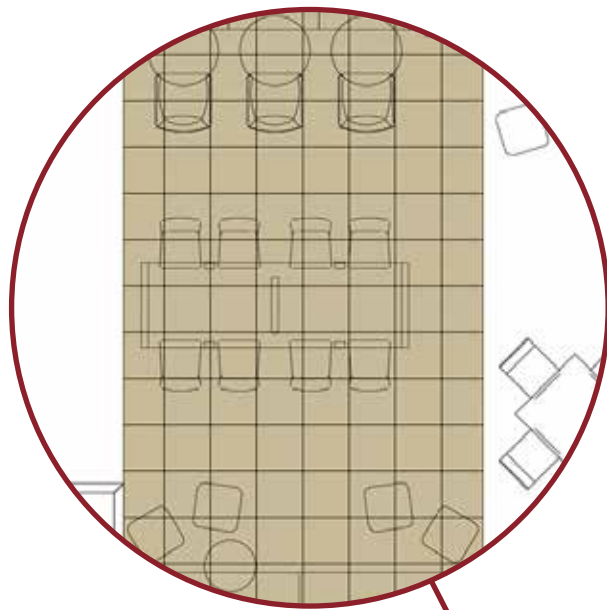


PRODUCT	ITEM#	COLOR#	SAMPLE#	SIZE	INSTALLATION
AE312	C-10 C	268431-039	189114	50 cm x 50 cm	Quarter Turn

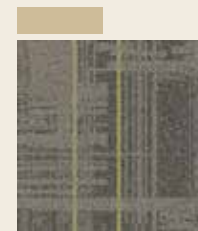
INSTALLATION SPECIFICATIONS	DESCRIPTION
XL2000 PLUS Adhesive	Double stick install

CONFIDENT LOBBY INSTALLATION PLAN

All quantities are estimates only and are based on plans provided. Site measurements and field verifications are recommended to ensure accuracy. These quantities are not intended to be used for material ordering purposes. Since waste factors may vary by installer, actual ordering quantities are the responsibility of your flooring contractor.



LEGEND



PRODUCT: AE312
ITEM: C-10 C
COLOR/SAMPLE: 189114_268431-039
SIZE: 50 cm x 50 cm
INSTALLED: Quarter Turn

CONFIDENT CORRIDOR PROTOTYPE ORDER INFORMATION

Carpet tiles **SAVE APPROXIMATELY 18%-20% IN PRODUCT WASTE** versus broadloom, based on prototype layout.

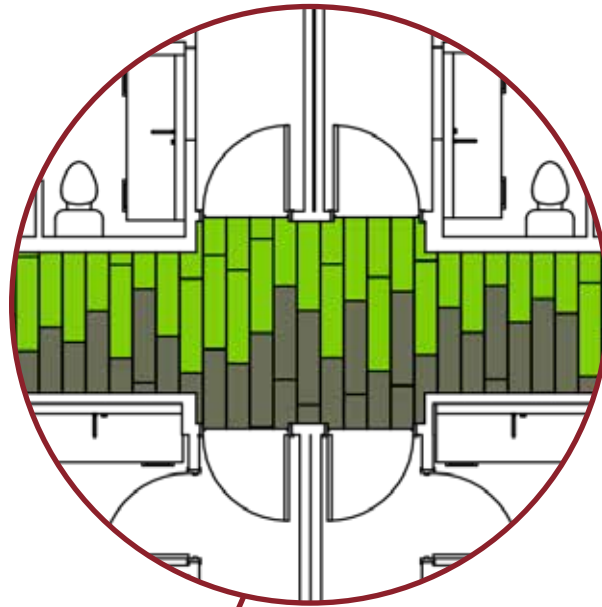


PRODUCT	ITEM#	COLOR#	SAMPLE#	SIZE	INSTALLATION
A Custom	C-11C-1	268458-055	189121	25 cm x 1 m	Ashlar
B Custom	C-11C-2	268458-056	189120	25 cm x 1 m	Ashlar

INSTALLATION SPECIFICATIONS	DESCRIPTION
XL2000 PLUS Adhesive	Double stick install

CONFIDENT CORRIDOR INSTALLATION PLAN

All quantities are estimates only and are based on plans provided. Site measurements and field verifications are recommended to ensure accuracy. These quantities are not intended to be used for material ordering purposes. Since waste factors may vary by installer, actual ordering quantities are the responsibility of your flooring contractor.



LEGEND

A



PRODUCT: Custom
ITEM: C-11 C-1
COLOR/SAMPLE:
189121_268458-055
SIZE: 25 cm x 1 m
INSTALLED: Ashlar
**There are multiple tile variations within a box.*

B



PRODUCT: Custom
ITEM: C-11 C-2
COLOR/SAMPLE:
189120_268458-056
SIZE: 25 cm x 1 m
INSTALLED: Ashlar
**There are multiple tile variations within a box.*

CONFIDENT GUESTROOM PROTOTYPE ORDER INFORMATION

Carpet tiles **SAVE APPROXIMATELY 18%-20% IN PRODUCT WASTE** versus broadloom, based on prototype layout.

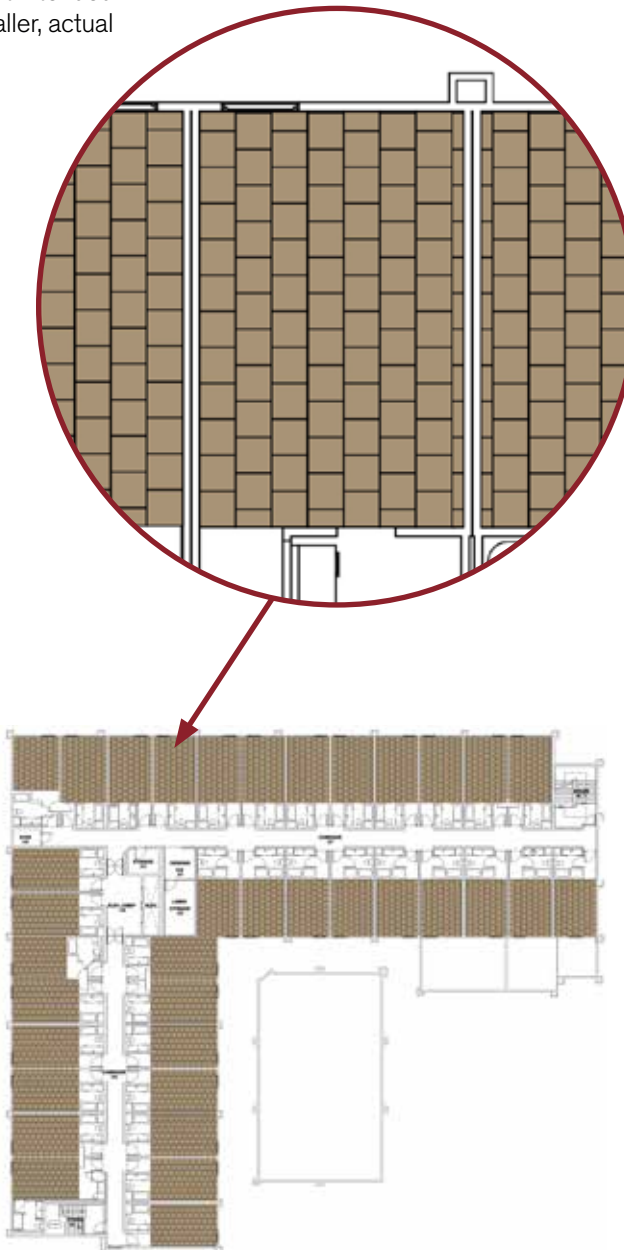


PRODUCT	ITEM#	COLOR#	SAMPLE#	SIZE	INSTALLATION
Main Line	C-01 C	189110	268458-052	50 cm x 50 cm	Brick

INSTALLATION SPECIFICATIONS	DESCRIPTION
XL2000 PLUS Adhesive	Double stick install

CONFIDENT GUESTROOM INSTALLATION PLAN

All quantities are estimates only and are based on plans provided. Site measurements and field verifications are recommended to ensure accuracy. These quantities are not intended to be used for material ordering purposes. Since waste factors may vary by installer, actual ordering quantities are the responsibility of your flooring contractor.



LEGEND



PRODUCT: Main Line
ITEM: C-01 C
COLOR/SAMPLE: 189110_268458-052
SIZE: 50 cm x 50 cm
INSTALLED: Brick

CONFIDENT MEETING ROOM PROTOTYPE ORDER INFORMATION

Carpet tiles **SAVE APPROXIMATELY 18%-20% IN PRODUCT WASTE** versus broadloom, based on prototype layout.

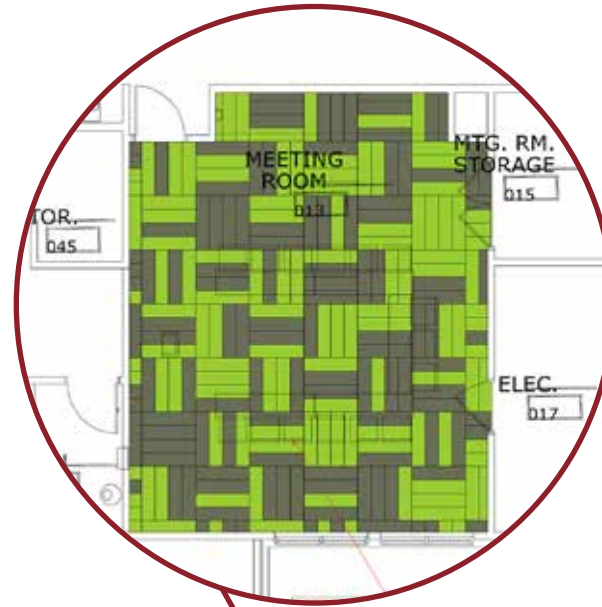


PRODUCT	ITEM#	COLOR#	SAMPLE#	SIZE	INSTALLATION
A Custom	C-12 C-1	268458-055	189121	25 cm x 1 m	Quarter Turn
B Custom	C-12 C-2	268458-056	189120	25 cm x 1 m	Quarter Turn

INSTALLATION SPECIFICATIONS	DESCRIPTION
XL2000 PLUS Adhesive	Double stick install

CONFIDENT MEETING ROOM INSTALLATION PLAN

All quantities are estimates only and are based on plans provided. Site measurements and field verifications are recommended to ensure accuracy. These quantities are not intended to be used for material ordering purposes. Since waste factors may vary by installer, actual ordering quantities are the responsibility of your flooring contractor.



LEGEND

A



PRODUCT: Custom
ITEM: C-12 C-1
COLOR/SAMPLE:
189121_268458-055
SIZE: 25 cm x 1 m
INSTALLED: Quarter Turn
**There are multiple tile variations within a box.*

B



PRODUCT: Custom
ITEM: C-12 C-2
COLOR/SAMPLE:
189120_268458-056
SIZE: 25 cm x 1 m
INSTALLED: Quarter Turn
**There are multiple tile variations within a box.*

CONFIDENT OFFICE PROTOTYPE ORDER INFORMATION

Carpet tiles **SAVE APPROXIMATELY 18%-20% IN PRODUCT WASTE** versus broadloom, based on prototype layout.

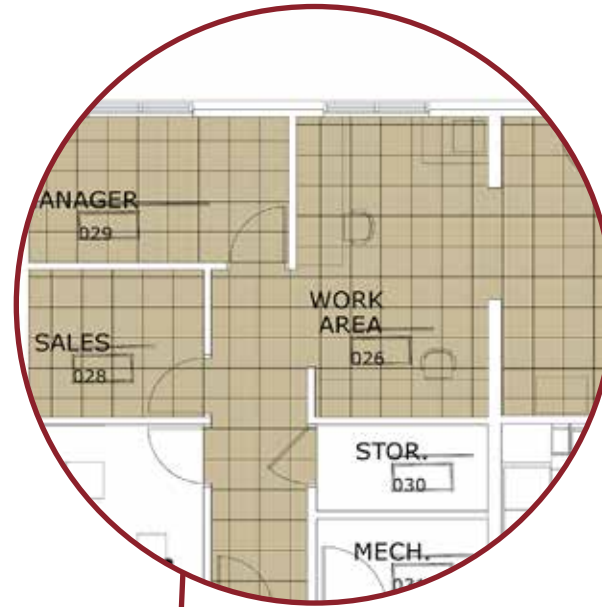


PRODUCT	ITEM#	COLOR#	SAMPLE#	SIZE	INSTALLATION
AE312	C-13 C	268431-039	189114	50 cm x 50 cm	Quarter Turn

INSTALLATION SPECIFICATIONS	DESCRIPTION
XL2000 PLUS Adhesive	Double stick install

CONFIDENT OFFICE INSTALLATION PLAN

All quantities are estimates only and are based on plans provided. Site measurements and field verifications are recommended to ensure accuracy. These quantities are not intended to be used for material ordering purposes. Since waste factors may vary by installer, actual ordering quantities are the responsibility of your flooring contractor.



LEGEND



PRODUCT: AE312
ITEM: C-13 C
COLOR/SAMPLE: 189114_268431-039
SIZE: 50 cm x 50 cm
INSTALLED: Quarter Turn

CONFIDENT BREAKROOM PROTOTYPE ORDER INFORMATION

Carpet tiles **SAVE APPROXIMATELY 18%-20% IN PRODUCT WASTE** versus broadloom, based on prototype layout.

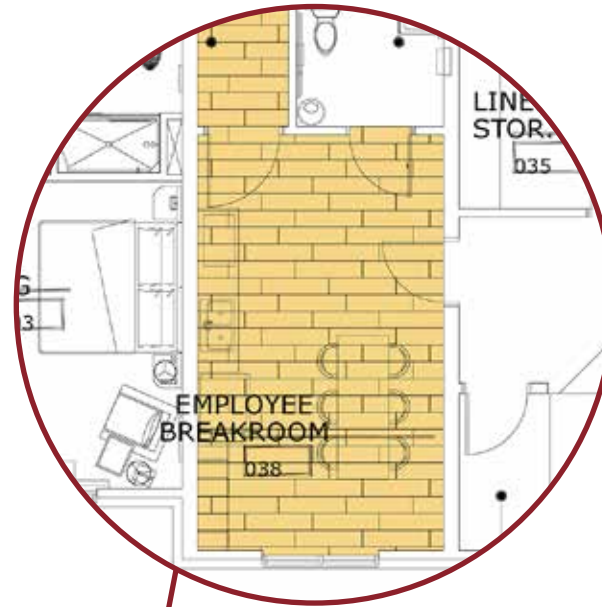


PRODUCT	ITEM#	COLOR#	SIZE	INSTALLATION
LVT Natural Woodgrains	LVT-15	A00204 Beech	25 cm x 1 m	Ashlar

INSTALLATION SPECIFICATIONS	DESCRIPTION
XL2000 PLUS Adhesive	Double stick install

CONFIDENT BREAKROOM INSTALLATION PLAN

All quantities are estimates only and are based on plans provided. Site measurements and field verifications are recommended to ensure accuracy. These quantities are not intended to be used for material ordering purposes. Since waste factors may vary by installer, actual ordering quantities are the responsibility of your flooring contractor.



LEGEND



PRODUCT: LVT Natural Woodgrains
ITEM: LVT-15
COLOR: A00204 Beech
SIZE: 25 cm x 1 m
INSTALLED: Ashlar

Interface®

HILTON GARDEN INN



APPROVED PROTOTYPES

Hampton Inn by Hilton
Hilton Garden Inn
Home2 Suites
Tru by Hilton

BLOOM LOBBY PROTOTYPE ORDER INFORMATION

Carpet tiles **SAVE APPROXIMATELY 18%-20% IN PRODUCT WASTE** versus broadloom, based on prototype layout.

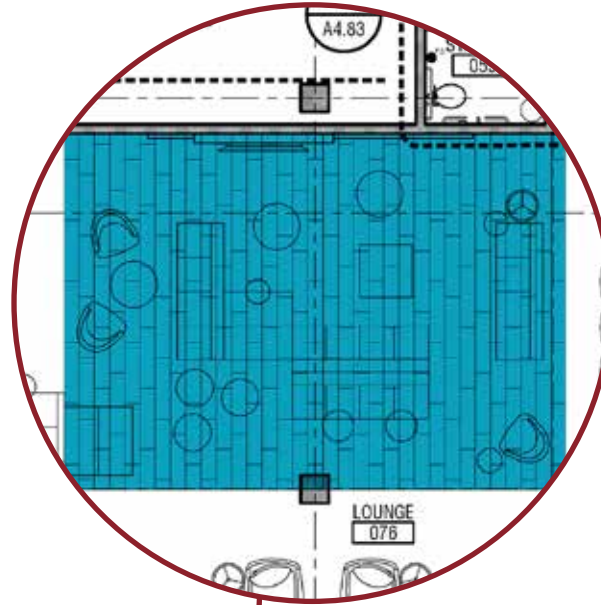
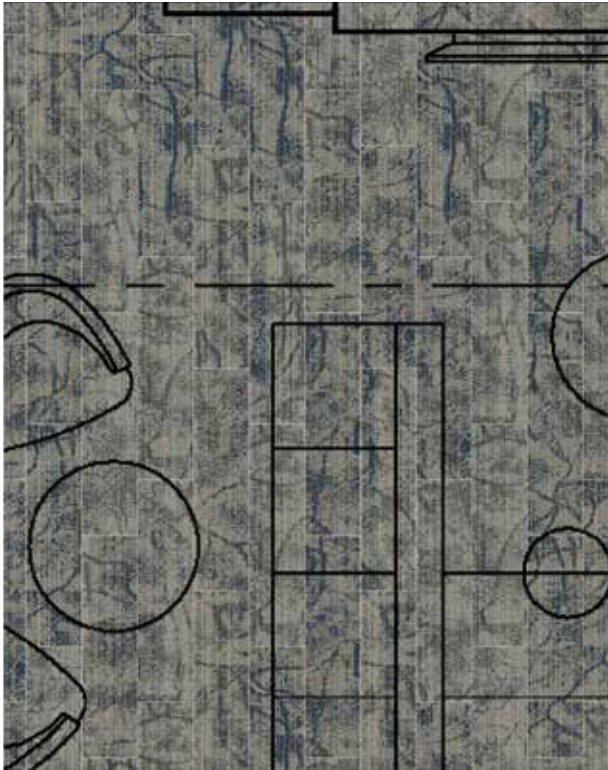


PRODUCT	ITEM#	COLOR#	SAMPLE#	SIZE	INSTALLATION
Custom	C-10	268520-125	189098	25 cm x 1 m	Ashlar

INSTALLATION SPECIFICATIONS	DESCRIPTION
XL2000 PLUS Adhesive	Double stick install

BLOOM LOBBY INSTALLATION PLAN

All quantities are estimates only and are based on plans provided. Site measurements and field verifications are recommended to ensure accuracy. These quantities are not intended to be used for material ordering purposes. Since waste factors may vary by installer, actual ordering quantities are the responsibility of your flooring contractor.



LEGEND



PRODUCT: Custom
ITEM: C-10
COLOR/SAMPLE:
189098_268520-125
SIZE: 25 cm x 1 m
INSTALLED: Ashlar

BLOOM CORRIDOR PROTOTYPE ORDER INFORMATION

Carpet tiles **SAVE APPROXIMATELY 18%-20% IN PRODUCT WASTE** versus broadloom, based on prototype layout.

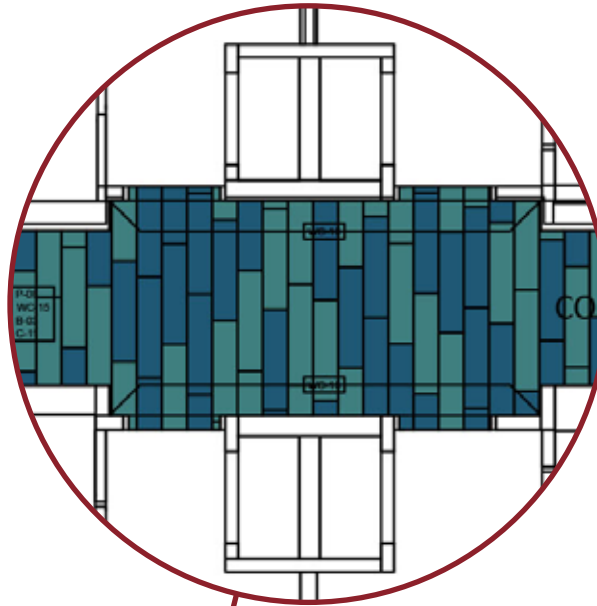


PRODUCT	ITEM#	COLOR#	SAMPLE#	SIZE	INSTALLATION
A Custom	C-12	268520-137	189096	25 cm x 1 m	Ashlar
B Custom	C-11	268520-122	189097	25 cm x1 m	Ashlar

INSTALLATION SPECIFICATIONS	DESCRIPTION
XL2000 PLUS Adhesive	Double stick install

BLOOM CORRIDOR INSTALLATION PLAN

All quantities are estimates only and are based on plans provided. Site measurements and field verifications are recommended to ensure accuracy. These quantities are not intended to be used for material ordering purposes. Since waste factors may vary by installer, actual ordering quantities are the responsibility of your flooring contractor.



LEGEND

A



PRODUCT: Custom
ITEM: C-12
COLOR/SAMPLE:
189096_268520-137
SIZE: 25 cm x 1 m
INSTALLED: Ashlar

B



PRODUCT: Custom
ITEM: C-11
COLOR/SAMPLE:
189097_268520-122
SIZE: 25 cm x 1 m
INSTALLED: Ashlar

BLOOM GUESTROOM PROTOTYPE ORDER INFORMATION

Carpet tiles **SAVE APPROXIMATELY 18%-20% IN PRODUCT WASTE** versus broadloom, based on prototype layout.

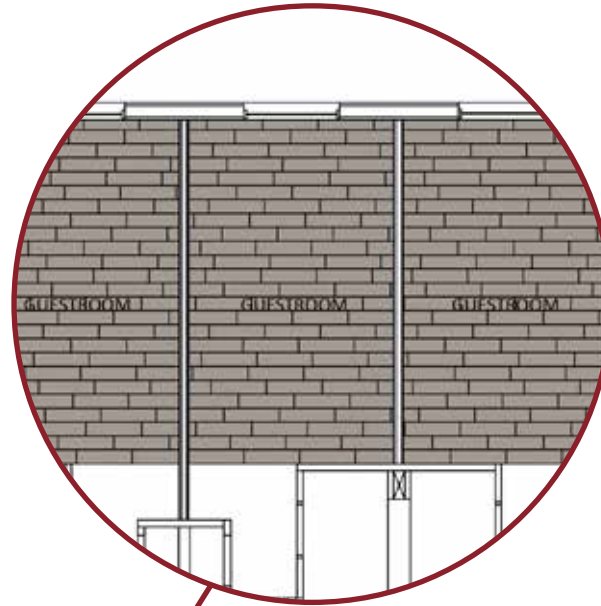


PRODUCT	ITEM#	COLOR#	SAMPLE#	SIZE	INSTALLATION
Snow Moon	C-01	268520-134	189092	25 cm x 1	Ashlar

INSTALLATION SPECIFICATIONS	DESCRIPTION
XL2000 PLUS Adhesive	Double stick install

BLOOM GUESTROOM INSTALLATION PLAN

All quantities are estimates only and are based on plans provided. Site measurements and field verifications are recommended to ensure accuracy. These quantities are not intended to be used for material ordering purposes. Since waste factors may vary by installer, actual ordering quantities are the responsibility of your flooring contractor.



LEGEND



PRODUCT: Snow Moon
ITEM: C-01
COLOR/SAMPLE:
189092_268520-134
SIZE: 25 cm x 1 m
INSTALLED: Ashlar

BLOOM MEETING ROOM PROTOTYPE ORDER INFORMATION

Carpet tiles **SAVE APPROXIMATELY 18%-20% IN PRODUCT WASTE** versus broadloom, based on prototype layout.

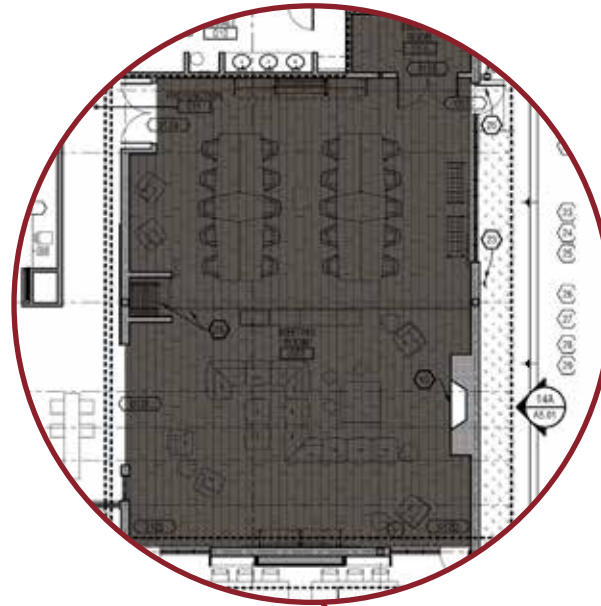
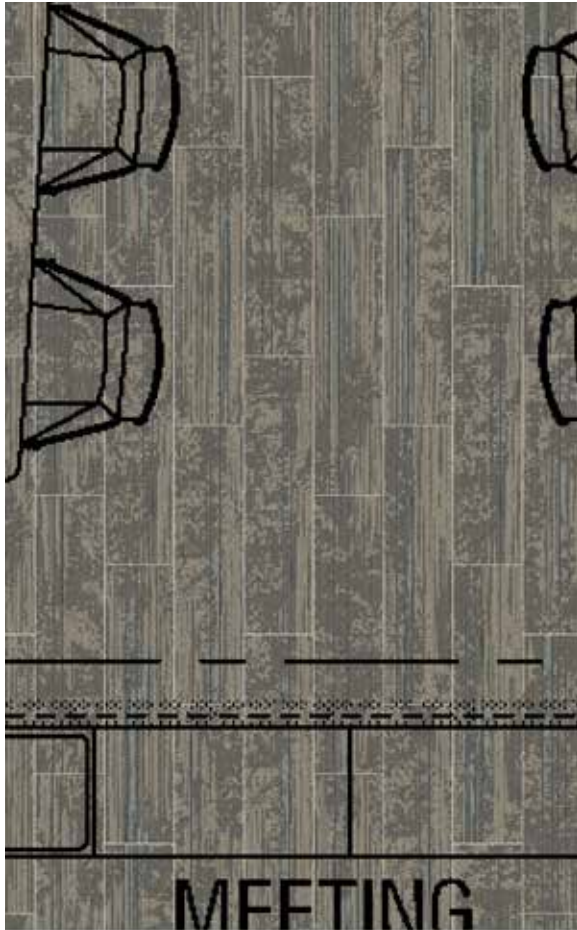


PRODUCT	ITEM#	COLOR#	SAMPLE#	SIZE	INSTALLATION
Custom	C-13	268520-128	189099	25 cm x 1 m	Ashlar

INSTALLATION SPECIFICATIONS	DESCRIPTION
XL2000 PLUS Adhesive	Double stick install

BLOOM MEETING ROOM INSTALLATION PLAN

All quantities are estimates only and are based on plans provided. Site measurements and field verifications are recommended to ensure accuracy. These quantities are not intended to be used for material ordering purposes. Since waste factors may vary by installer, actual ordering quantities are the responsibility of your flooring contractor.



LEGEND



PRODUCT: Custom
ITEM: C-13
COLOR/SAMPLE:
189099_268520-128
SIZE: 25 cm x 1 m
INSTALLED: Ashlar

BLOOM BREAKROOM PROTOTYPE ORDER INFORMATION

Carpet tiles **SAVE APPROXIMATELY 18%-20% IN PRODUCT WASTE** versus broadloom, based on prototype layout.

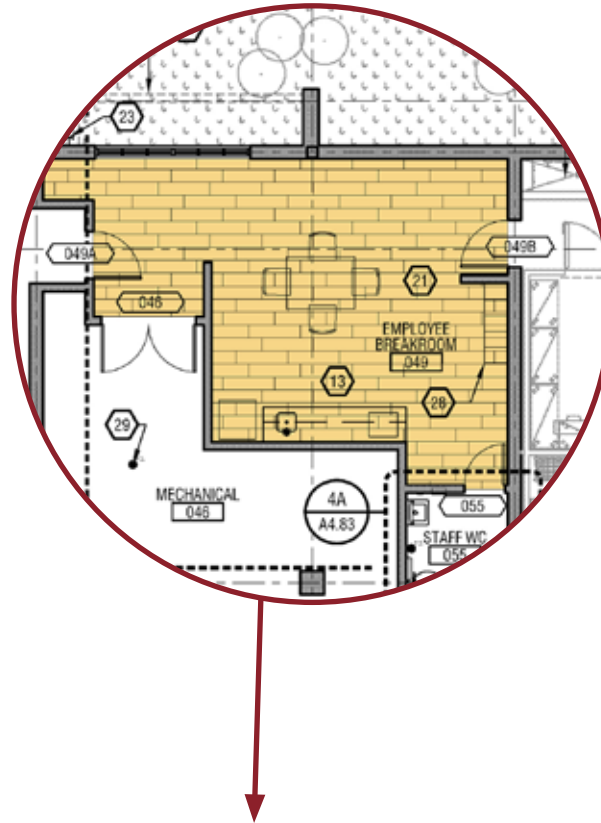


PRODUCT	ITEM#	COLOR#	SIZE	INSTALLATION
LVT Natural Woodgrains	C-15	A00204 Beech	25 cm x 1 m	Ashlar

INSTALLATION SPECIFICATIONS	DESCRIPTION
XL2000 PLUS Adhesive	Double stick install

BLOOM BREAKROOM INSTALLATION PLAN

All quantities are estimates only and are based on plans provided. Site measurements and field verifications are recommended to ensure accuracy. These quantities are not intended to be used for material ordering purposes. Since waste factors may vary by installer, actual ordering quantities are the responsibility of your flooring contractor.



LEGEND



PRODUCT: LVT Natural Woodgrains
ITEM: C-15
COLOR: A00204 Beech
SIZE: 25 cm x 1 m
INSTALLED: Ashlar

BLOOM OFFICE PROTOTYPE ORDER INFORMATION

Carpet tiles **SAVE APPROXIMATELY 18%-20% IN PRODUCT WASTE** versus broadloom, based on prototype layout.

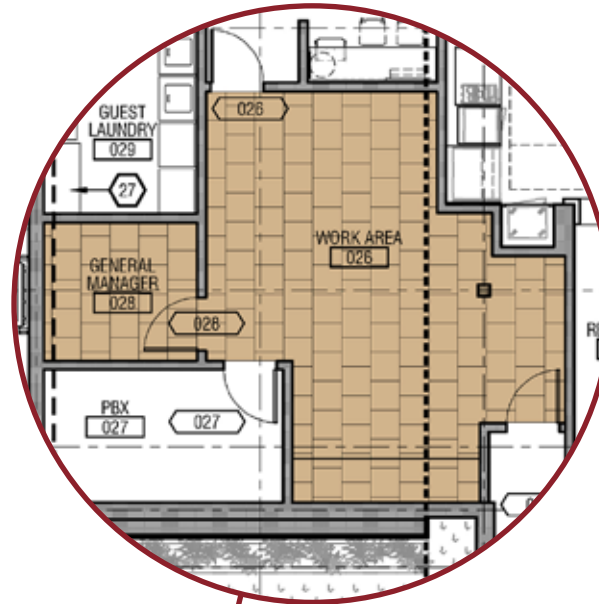
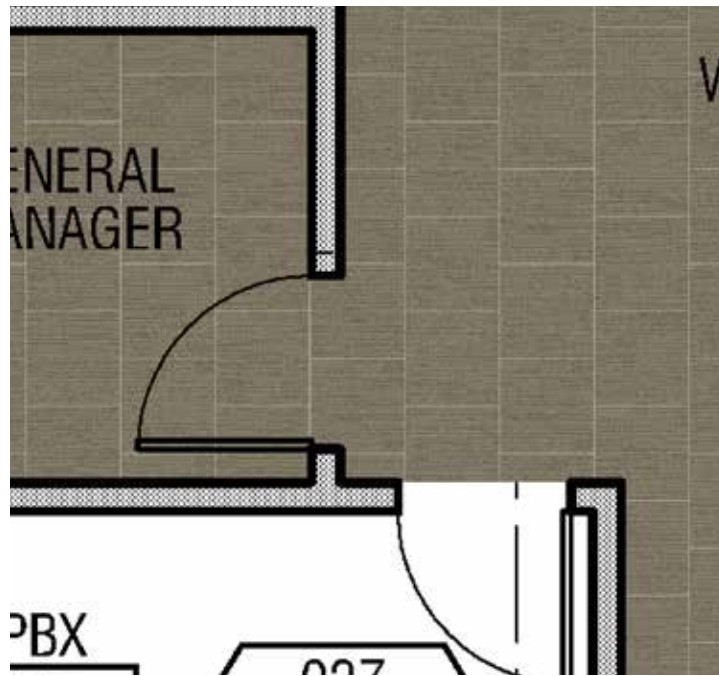


PRODUCT	ITEM#	COLOR#	SIZE	INSTALLATION
Platform	C-14	9332 Soapstone	50 cm x 50 cm	Brick

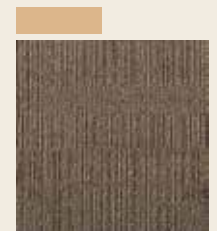
INSTALLATION SPECIFICATIONS	DESCRIPTION
XL2000 PLUS Adhesive	Double stick install

BLOOM OFFICE INSTALLATION PLAN

All quantities are estimates only and are based on plans provided. Site measurements and field verifications are recommended to ensure accuracy. These quantities are not intended to be used for material ordering purposes. Since waste factors may vary by installer, actual ordering quantities are the responsibility of your flooring contractor.



LEGEND



PRODUCT: Platform
ITEM: C-14
COLOR: 9332 Soapstone
SIZE: 50 cm x 50 cm
INSTALLED: Brick

REVIVE LOBBY PROTOTYPE ORDER INFORMATION

Carpet tiles **SAVE APPROXIMATELY 18%-20% IN PRODUCT WASTE** versus broadloom, based on prototype layout.

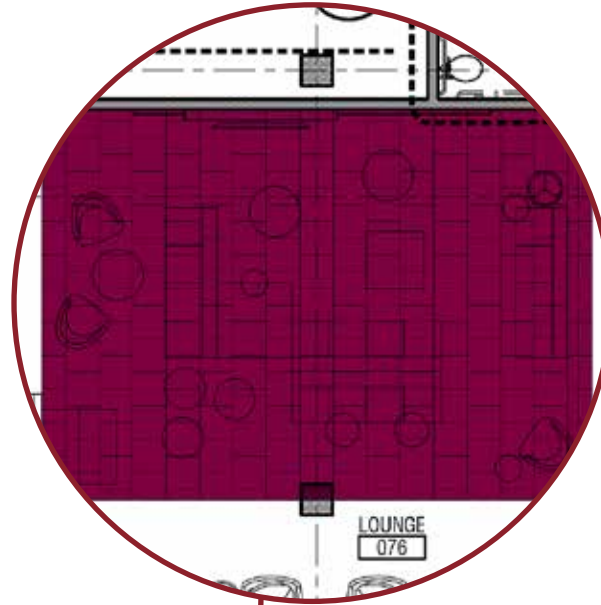
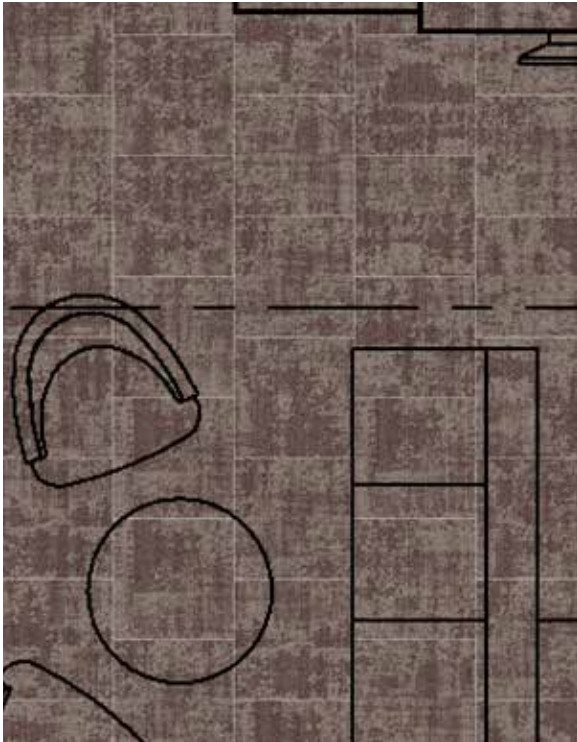


PRODUCT	ITEM#	COLOR#	SAMPLE#	SIZE	INSTALLATION
Cloud Cover	C-10	265520-094	189093	50 cm x 50 cm	Ashlar

INSTALLATION SPECIFICATIONS	DESCRIPTION
XL2000 PLUS Adhesive	Double stick install

REVIVE LOBBY INSTALLATION PLAN

All quantities are estimates only and are based on plans provided. Site measurements and field verifications are recommended to ensure accuracy. These quantities are not intended to be used for material ordering purposes. Since waste factors may vary by installer, actual ordering quantities are the responsibility of your flooring contractor.



LEGEND



PRODUCT: Cloud Cover
ITEM: C-10
COLOR/SAMPLE:
189093_265520-094
SIZE: 50 cm x 50 cm
INSTALLED: Ashlar

REVIVE CORRIDOR PROTOTYPE ORDER INFORMATION

Carpet tiles **SAVE APPROXIMATELY 18%-20% IN PRODUCT WASTE** versus broadloom, based on prototype layout.

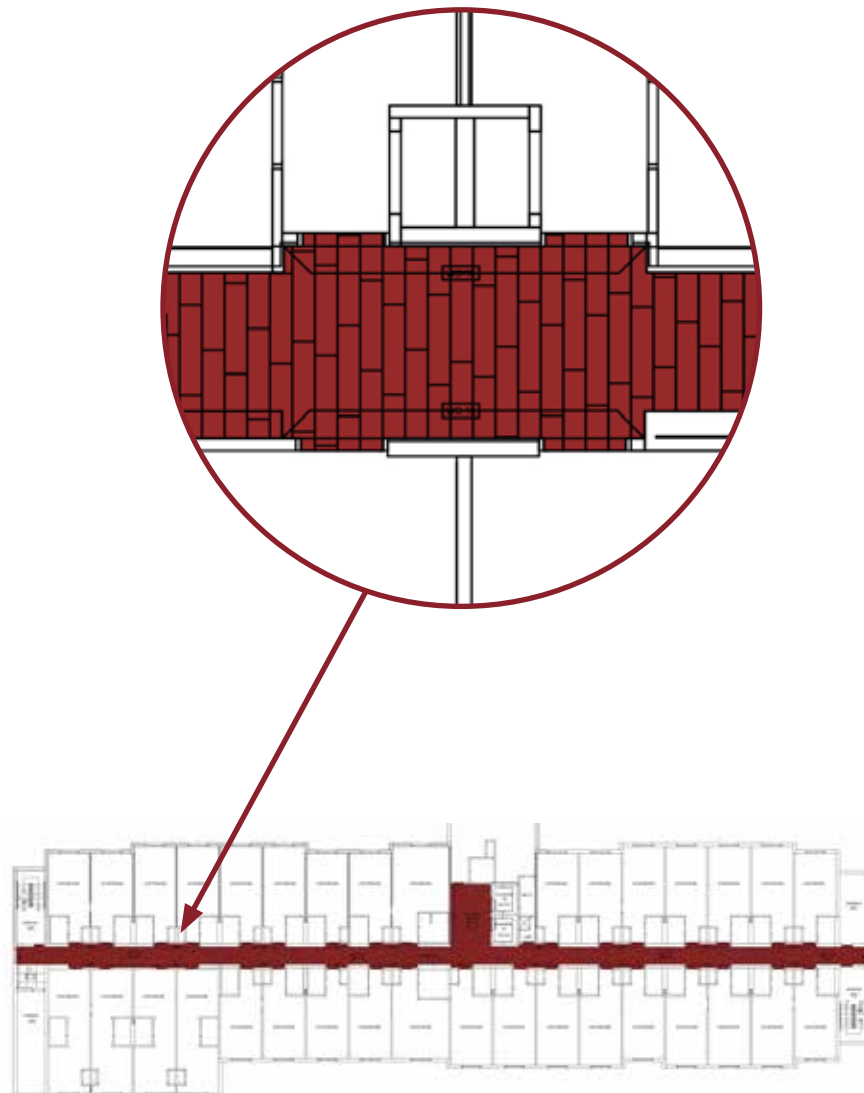


PRODUCT	ITEM#	COLOR#	SAMPLE#	SIZE	INSTALLATION
Custom	C-11	265520-107	189100	25 cm x 1 m	Ashlar

INSTALLATION SPECIFICATIONS	DESCRIPTION
XL2000 PLUS Adhesive	Double stick install

REVIVE CORRIDOR INSTALLATION PLAN

All quantities are estimates only and are based on plans provided. Site measurements and field verifications are recommended to ensure accuracy. These quantities are not intended to be used for material ordering purposes. Since waste factors may vary by installer, actual ordering quantities are the responsibility of your flooring contractor.



LEGEND



PRODUCT: Custom
ITEM: C-11
COLOR/SAMPLE:
189100_265520-107
SIZE: 25 cm x 1 m
INSTALLED: Ashlar

REVIVE GUESTROOM PROTOTYPE ORDER INFORMATION

Carpet tiles **SAVE APPROXIMATELY 18%-20% IN PRODUCT WASTE** versus broadloom, based on prototype layout.

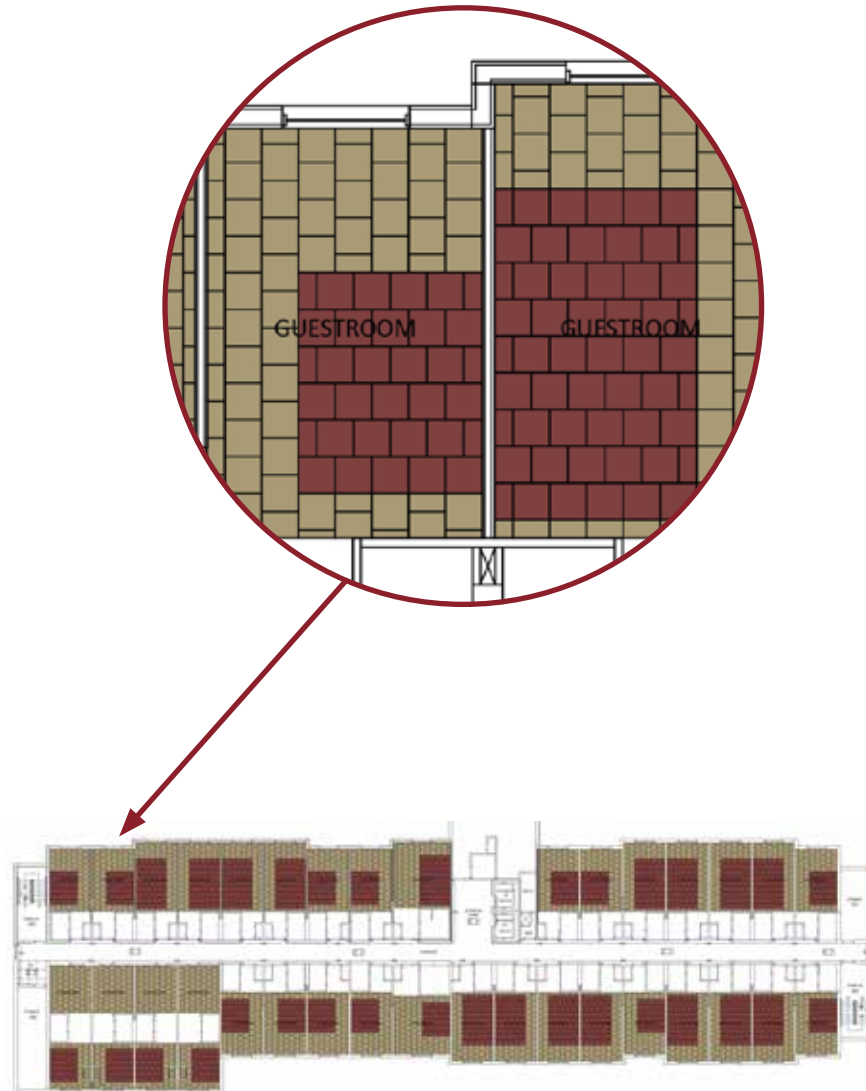
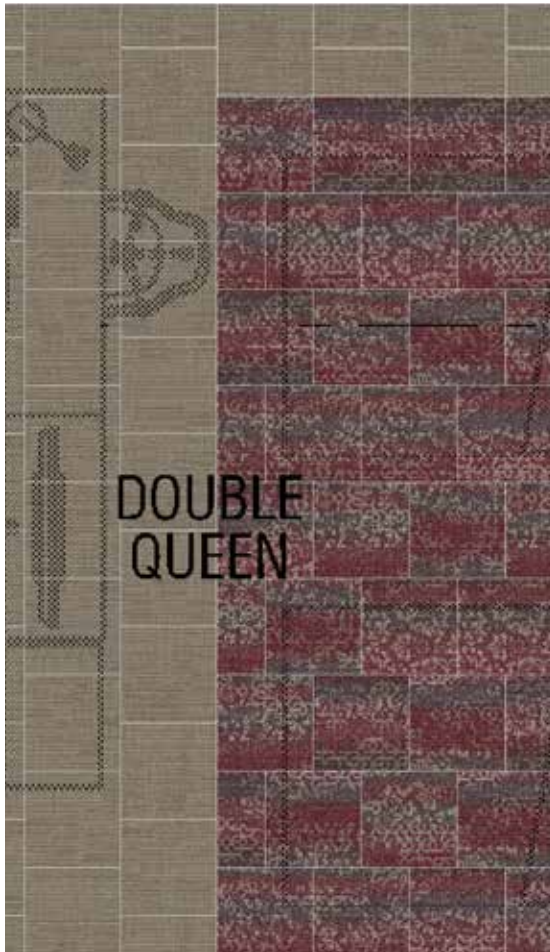


PRODUCT	ITEM#	COLOR#	SAMPLE#	SIZE	INSTALLATION
A Platform	C-01	265520-102	189095	50 cm x 50 cm	Brick
B Custom	C-02	265520-105	189101	50 cm x 50 cm	Ashlar

INSTALLATION SPECIFICATIONS	DESCRIPTION
XL2000 PLUS Adhesive	Double stick install

REVIVE GUESTROOM INSTALLATION PLAN

All quantities are estimates only and are based on plans provided. Site measurements and field verifications are recommended to ensure accuracy. These quantities are not intended to be used for material ordering purposes. Since waste factors may vary by installer, actual ordering quantities are the responsibility of your flooring contractor.



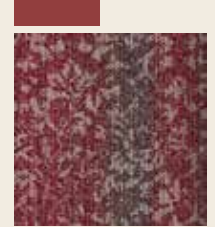
LEGEND

A



PRODUCT: Platform
ITEM: C-01
COLOR/SAMPLE:
189095_265520-102
SIZE: 50 cm x 50 cm
INSTALLED: Brick

B



PRODUCT: Custom
ITEM: C-02
COLOR/SAMPLE:
189101_265520-105
SIZE: 50 cm x 50 cm
INSTALLED: Ashlar

REVIVE MEETING ROOM PROTOTYPE ORDER INFORMATION

Carpet tiles **SAVE APPROXIMATELY 18%-20% IN PRODUCT WASTE** versus broadloom, based on prototype layout.

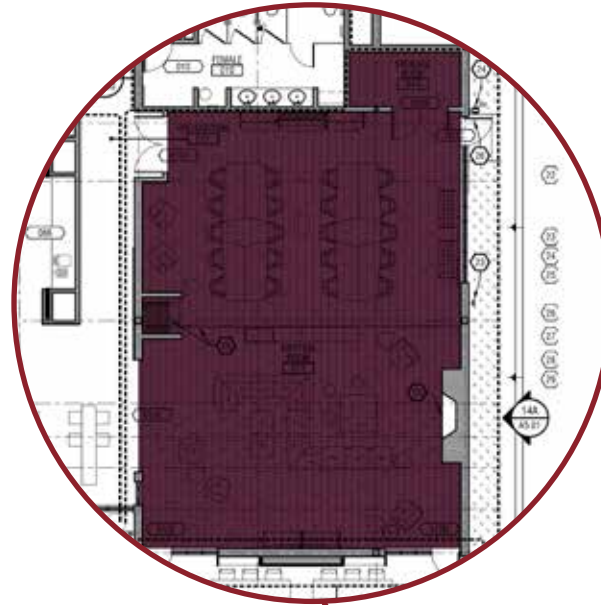
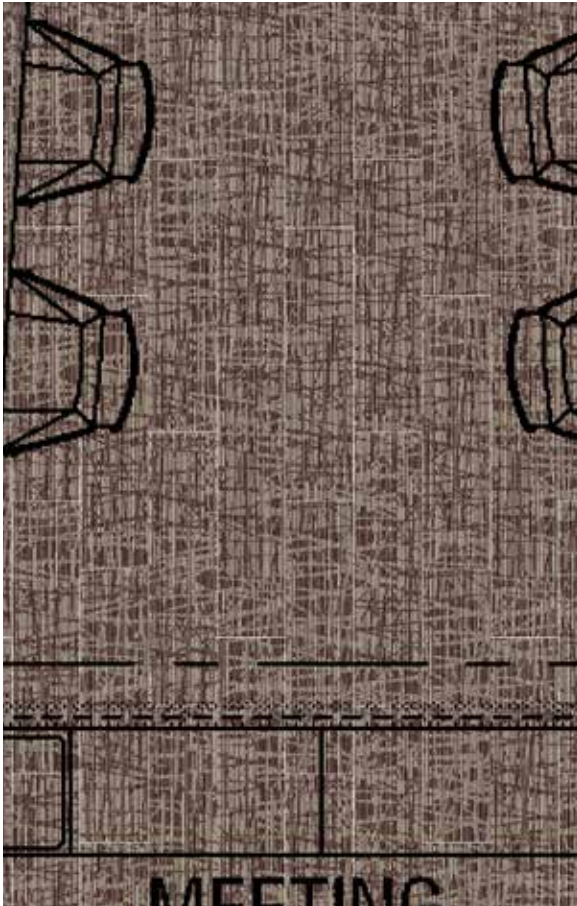


PRODUCT	ITEM#	COLOR#	SAMPLE#	SIZE	INSTALLATION
WE153	C-13	265520-108	189094	25 cm x 1 m	Ashlar

INSTALLATION SPECIFICATIONS	DESCRIPTION
XL2000 PLUS Adhesive	Double stick install

REVIVE MEETING ROOM INSTALLATION PLAN

All quantities are estimates only and are based on plans provided. Site measurements and field verifications are recommended to ensure accuracy. These quantities are not intended to be used for material ordering purposes. Since waste factors may vary by installer, actual ordering quantities are the responsibility of your flooring contractor.



LEGEND



PRODUCT: WE153
ITEM: C-13
COLOR/SAMPLE:
189094_265520-108
SIZE: 25 cm x 1 m
INSTALLED: Ashlar

REVIVE BREAKROOM PROTOTYPE ORDER INFORMATION

Carpet tiles **SAVE APPROXIMATELY 18%-20% IN PRODUCT WASTE** versus broadloom, based on prototype layout.

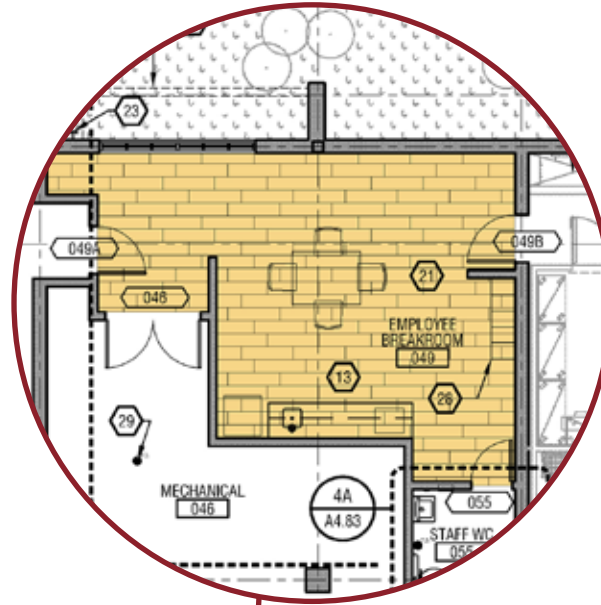


PRODUCT	ITEM#	COLOR#	SIZE	INSTALLATION
LVT Natural Woodgrains	C-15	A00204 Beech	25 cm x 1 m	Ashlar

INSTALLATION SPECIFICATIONS	DESCRIPTION
XL2000 PLUS Adhesive	Double stick install

REVIVE BREAKROOM INSTALLATION PLAN

All quantities are estimates only and are based on plans provided. Site measurements and field verifications are recommended to ensure accuracy. These quantities are not intended to be used for material ordering purposes. Since waste factors may vary by installer, actual ordering quantities are the responsibility of your flooring contractor.



LEGEND



PRODUCT: LVT Natural Woodgrains
ITEM: C-15
COLOR: A00204 Beech
SIZE: 25 cm x 1 m
INSTALLED: Ashlar

REVIVE OFFICE PROTOTYPE ORDER INFORMATION

Carpet tiles **SAVE APPROXIMATELY 18%-20% IN PRODUCT WASTE** versus broadloom, based on prototype layout.

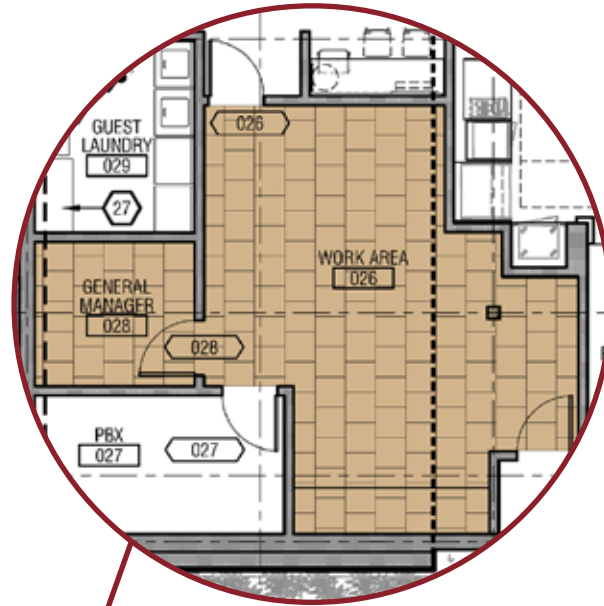
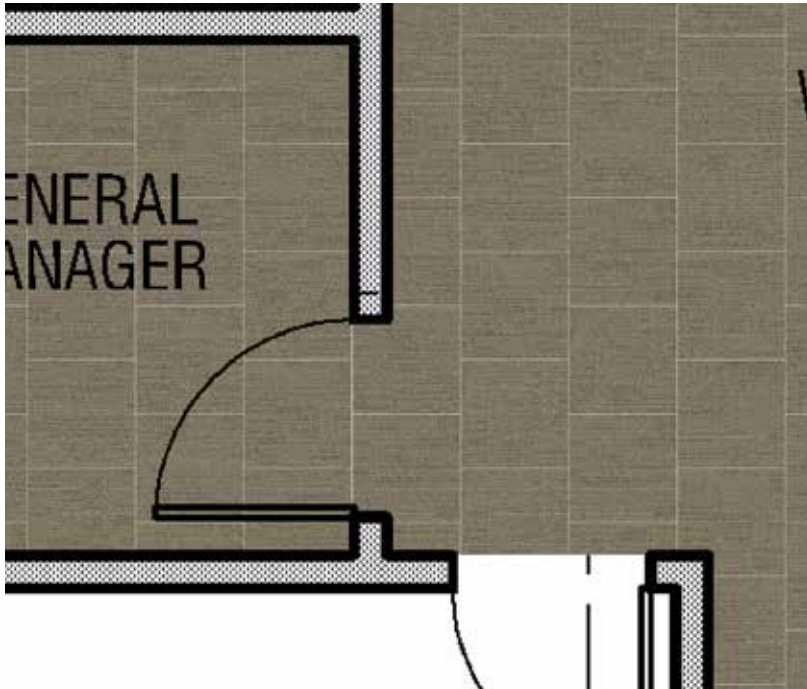


PRODUCT	ITEM#	COLOR#	SIZE	INSTALLATION
Platform	C-14	9332 Soapstone	50 cm x 50 cm	Brick

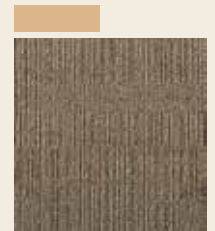
INSTALLATION SPECIFICATIONS	DESCRIPTION
XL2000 PLUS Adhesive	Double stick install

REVIVE OFFICE INSTALLATION PLAN

All quantities are estimates only and are based on plans provided. Site measurements and field verifications are recommended to ensure accuracy. These quantities are not intended to be used for material ordering purposes. Since waste factors may vary by installer, actual ordering quantities are the responsibility of your flooring contractor.



LEGEND



PRODUCT: Platform
ITEM: C-14
COLOR: 9332 Soapstone
SIZE: 50 cm x 50 cm
INSTALLED: Brick

Interface®

HOME2 SUITES



APPROVED PROTOTYPES

Hampton Inn by Hilton
Hilton Garden Inn
Home2 Suites
Tru by Hilton

CHELSEA RECEPTION & BOARDROOM PROTOTYPE ORDER INFORMATION

Carpet tiles **SAVE APPROXIMATELY 18%-20% IN PRODUCT WASTE** versus broadloom, based on prototype layout.

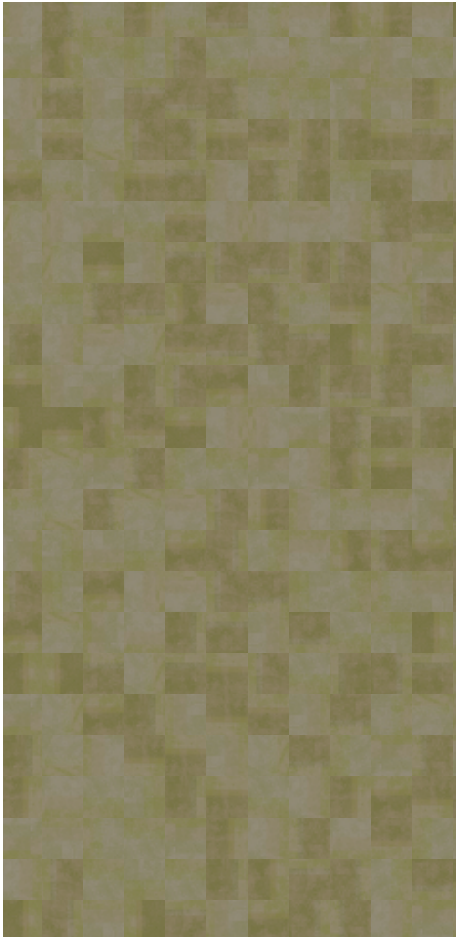


PRODUCT	ITEM#	COLOR#	SAMPLE#	SIZE	INSTALLATION
Reception Exposed	(A) CP-01	256794-189	188435	50 cm x 50 cm	Non Directional
Boardroom Exposed	(A) CP-02	256794-189	188435	50 cm x 50 cm	Non Directional

INSTALLATION SPECIFICATIONS	DESCRIPTION
XL2000 PLUS Adhesive	Double stick install

CHELSEA RECEPTION & BOARDROOM INSTALLATION PLAN

All quantities are estimates only and are based on plans provided. Site measurements and field verifications are recommended to ensure accuracy. These quantities are not intended to be used for material ordering purposes. Since waste factors may vary by installer, actual ordering quantities are the responsibility of your flooring contractor.

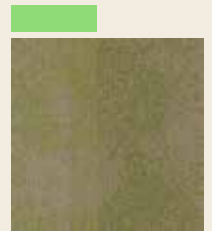


RECEPTION: (A) CP-01



BOARDROOM: (A) CP-02

LEGEND



PRODUCT: Exposed
ITEMS: (A) CP-01 & (A) CP-02
SAMPLE/COLOR: 188435_256794-189
SIZE: 50 cm x 50 cm
INSTALLED: Non Directional

CHELSEA CORRIDOR PROTOTYPE ORDER INFORMATION

Carpet tiles **SAVE APPROXIMATELY 18%-20% IN PRODUCT WASTE** versus broadloom, based on prototype layout.

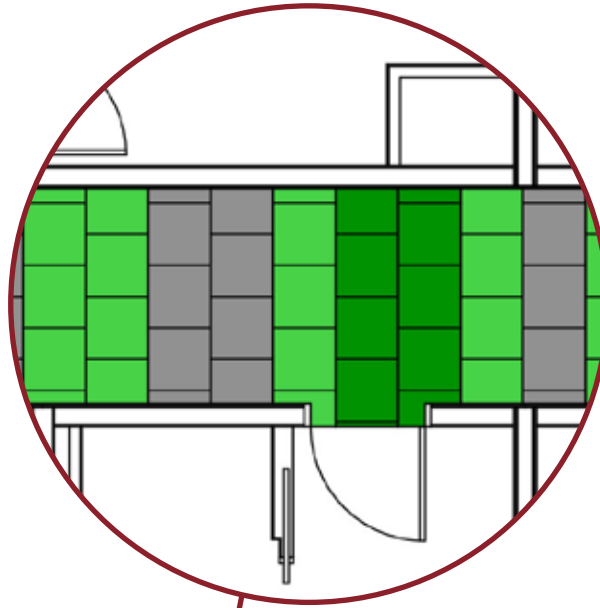


PRODUCT	ITEM#	COLOR#	SAMPLE#	SIZE	INSTALLATION
A AE311	(A) CP-02B	256794-158	188431	50 cm x 50 cm	Ashlar
B AE315	(A) CP-02A	256794-155	188429	50 cm x 50 cm	Ashlar
C AE311	(A) CP-02C	256794-161	188432	50 cm x 50 cm	Ashlar
Viva Coiores 4" Carpet Base	(A) CB-01	106048 Ostra		4" x 25' Rolls	

INSTALLATION SPECIFICATIONS	DESCRIPTION
XL2000 PLUS Adhesive	Double stick install

CHELSEA CORRIDOR INSTALLATION PLAN

All quantities are estimates only and are based on plans provided. Site measurements and field verifications are recommended to ensure accuracy. These quantities are not intended to be used for material ordering purposes. Since waste factors may vary by installer, actual ordering quantities are the responsibility of your flooring contractor.



LEGEND

A



PRODUCT: AE311
ITEM: (A) CP-02B
SAMPLE/COLOR: 188431_256794-158
SIZE: 50 cm x 50 cm
INSTALLED: Ashlar

B



PRODUCT: AE315
ITEM: (A) CP-02A
SAMPLE/COLOR: 188429_256794-155
SIZE: 50 cm x 50 cm
INSTALLED: Ashlar

C



PRODUCT: AE311
ITEM: (A) CP-02C
SAMPLE/COLOR: 188432_256794-161
SIZE: 50 cm x 50 cm
INSTALLED: Ashlar

CHELSEA GUESTROOM PROTOTYPE ORDER INFORMATION

Carpet tiles **SAVE APPROXIMATELY 18%-20% IN PRODUCT WASTE** versus broadloom, based on prototype layout.

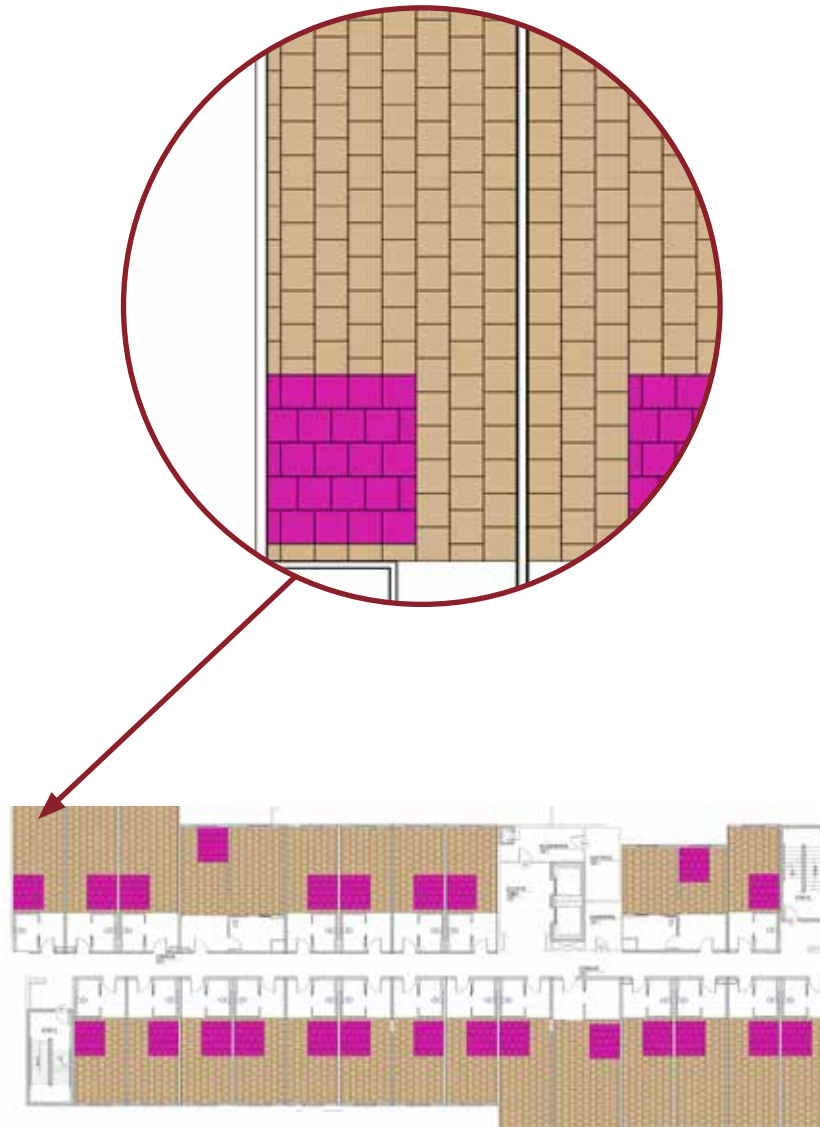


PRODUCT	ITEM#	COLOR#	SAMPLE#	SIZE	INSTALLATION
A Platform	(A) CP-03	9332 Soapstone		50 cm x 50 cm	Brick
B Custom	(A) CP-04	256794-176	188274	50 cm x 50 cm	Brick

INSTALLATION SPECIFICATIONS	DESCRIPTION
XL2000 PLUS Adhesive	Double stick install

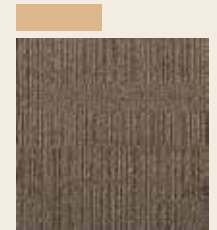
CHELSEA GUESTROOM INSTALLATION PLAN

All quantities are estimates only and are based on plans provided. Site measurements and field verifications are recommended to ensure accuracy. These quantities are not intended to be used for material ordering purposes. Since waste factors may vary by installer, actual ordering quantities are the responsibility of your flooring contractor.



LEGEND

A



PRODUCT: Platform
ITEM: (A) CP-03
COLOR: 9332 Soapstone
SIZE: 50 cm x 50 cm
INSTALLED: Brick

B



PRODUCT: Custom
ITEM: (A) CP-04
SAMPLE/COLOR: 188274_256794-176
SIZE: 50 cm x 50 cm
INSTALLED: Brick

TRIBECA RECEPTION & BOARDROOM PROTOTYPE ORDER INFORMATION

Carpet tiles **SAVE APPROXIMATELY 18%-20% IN PRODUCT WASTE** versus broadloom, based on prototype layout.

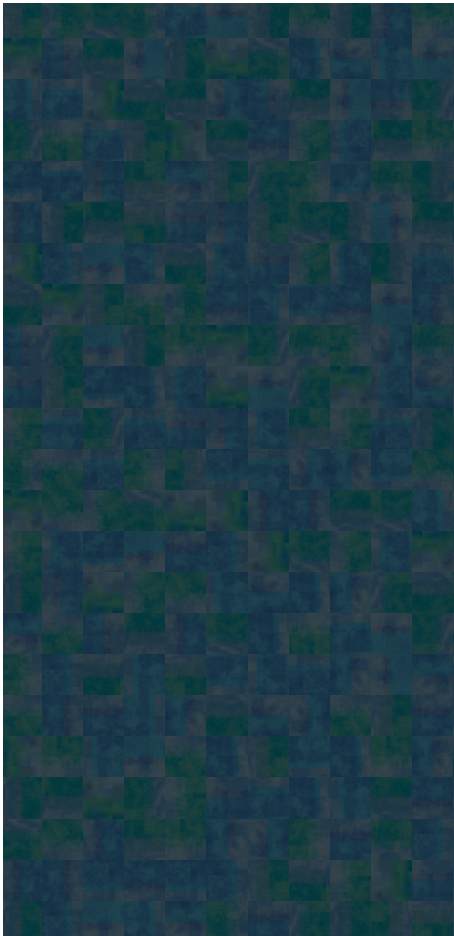


PRODUCT	ITEM#	COLOR#	SAMPLE#	SIZE	INSTALLATION
Reception Exposed	(B) CP-01	256794-152	188434	50 cm x 50 cm	Non Directional
Boardroom Exposed	(B) CP-02	256794-152	188434	50 cm x 50 cm	Non Directional

INSTALLATION SPECIFICATIONS	DESCRIPTION
XL2000 PLUS Adhesive	Double stick install

TRIBECA RECEPTION & BOARDROOM INSTALLATION PLAN

All quantities are estimates only and are based on plans provided. Site measurements and field verifications are recommended to ensure accuracy. These quantities are not intended to be used for material ordering purposes. Since waste factors may vary by installer, actual ordering quantities are the responsibility of your flooring contractor.

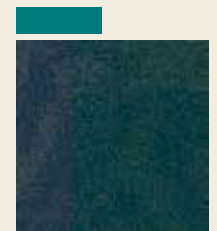


RECEPTION: (B) CP-01



BOARDROOM: (B) CP-02

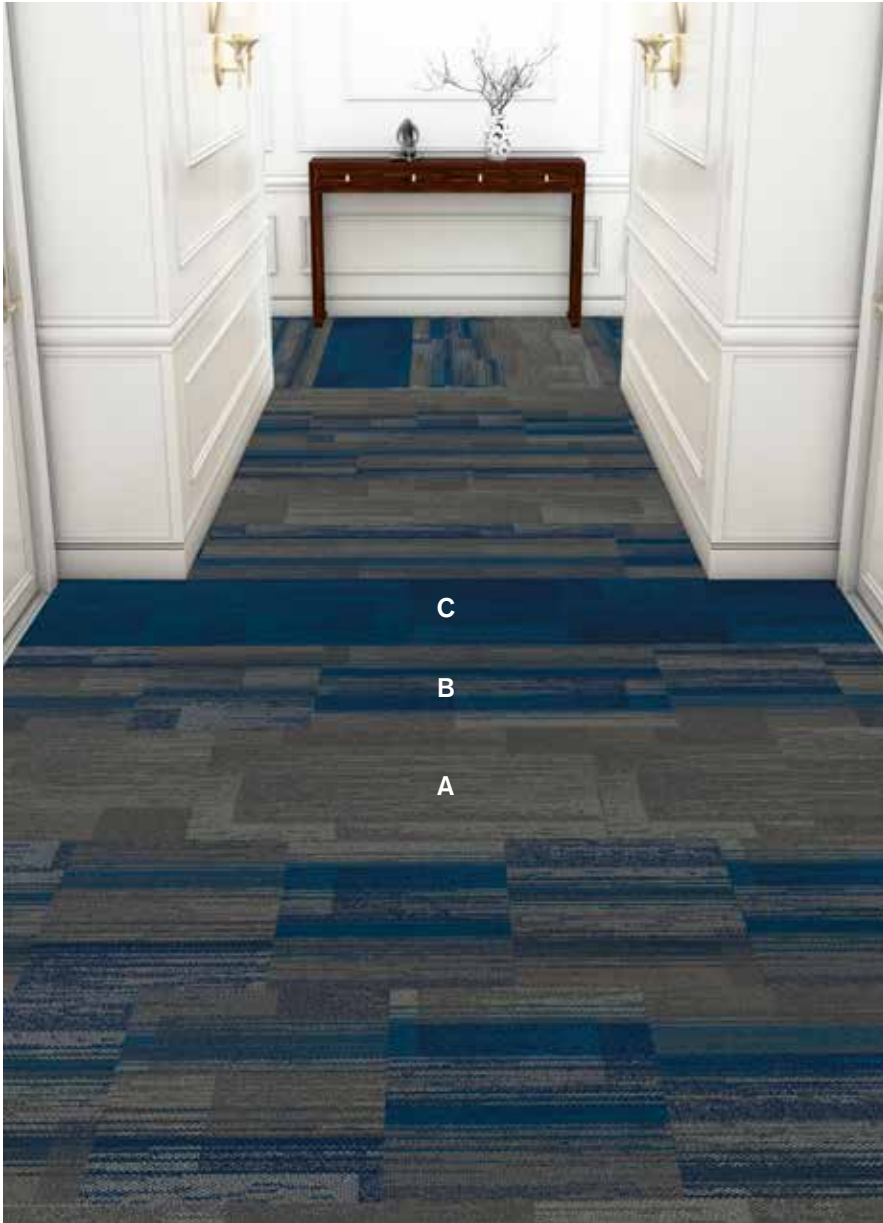
LEGEND



PRODUCT: Exposed
ITEMS: (B) CP-01 & (B) CP-02
SAMPLE/COLOR: 188434_256794-152
SIZE: 50 cm x 50 cm
INSTALLED: Non Directional

TRIBECA CORRIDOR PROTOTYPE ORDER INFORMATION

Carpet tiles **SAVE APPROXIMATELY 18%-20% IN PRODUCT WASTE** versus broadloom, based on prototype layout.

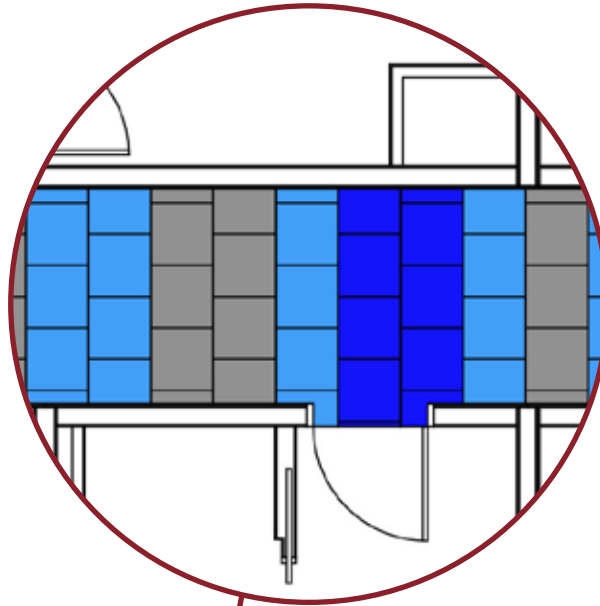


PRODUCT	ITEM#	COLOR#	SAMPLE#	SIZE	INSTALLATION
A AE311	(B) CP-02B	256794-158	188431	50 cm x 50 cm	Ashlar
B AE315	(B) CP-02A	256794-156	188430	50 cm x 50 cm	Ashlar
C AE311	(B) CP-02C	256794-164	188433	50 cm x 50 cm	Ashlar
Viva Cores 4" Carpet Base	(B) CB-01	106048 Ostra		4" x 25' Rolls	

INSTALLATION SPECIFICATIONS	DESCRIPTION
XL2000 PLUS Adhesive	Double stick install

TRIBECA CORRIDOR INSTALLATION PLAN

All quantities are estimates only and are based on plans provided. Site measurements and field verifications are recommended to ensure accuracy. These quantities are not intended to be used for material ordering purposes. Since waste factors may vary by installer, actual ordering quantities are the responsibility of your flooring contractor.



Consider a finished wall, with the direction perpendicular to the wall

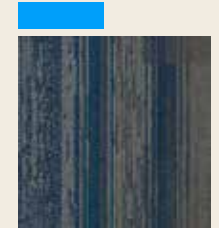
LEGEND

A



PRODUCT: AE311
ITEM: (B) CP-02B
SAMPLE/COLOR: 188431_256794-158
SIZE: 50 cm x 50 cm
INSTALLED: Ashlar

B



PRODUCT: AE315
ITEM: (B) CP-02A
SAMPLE/COLOR: 188430_256794-156
SIZE: 50 cm x 50 cm
INSTALLED: Ashlar

C



PRODUCT: AE311
ITEM: (B) CP-02C
SAMPLE/COLOR: 188433_256794-164
SIZE: 50 cm x 50 cm
INSTALLED: Ashlar

TRIBECA GUESTROOM PROTOTYPE ORDER INFORMATION

Carpet tiles **SAVE APPROXIMATELY 18%-20% IN PRODUCT WASTE** versus broadloom, based on prototype layout.

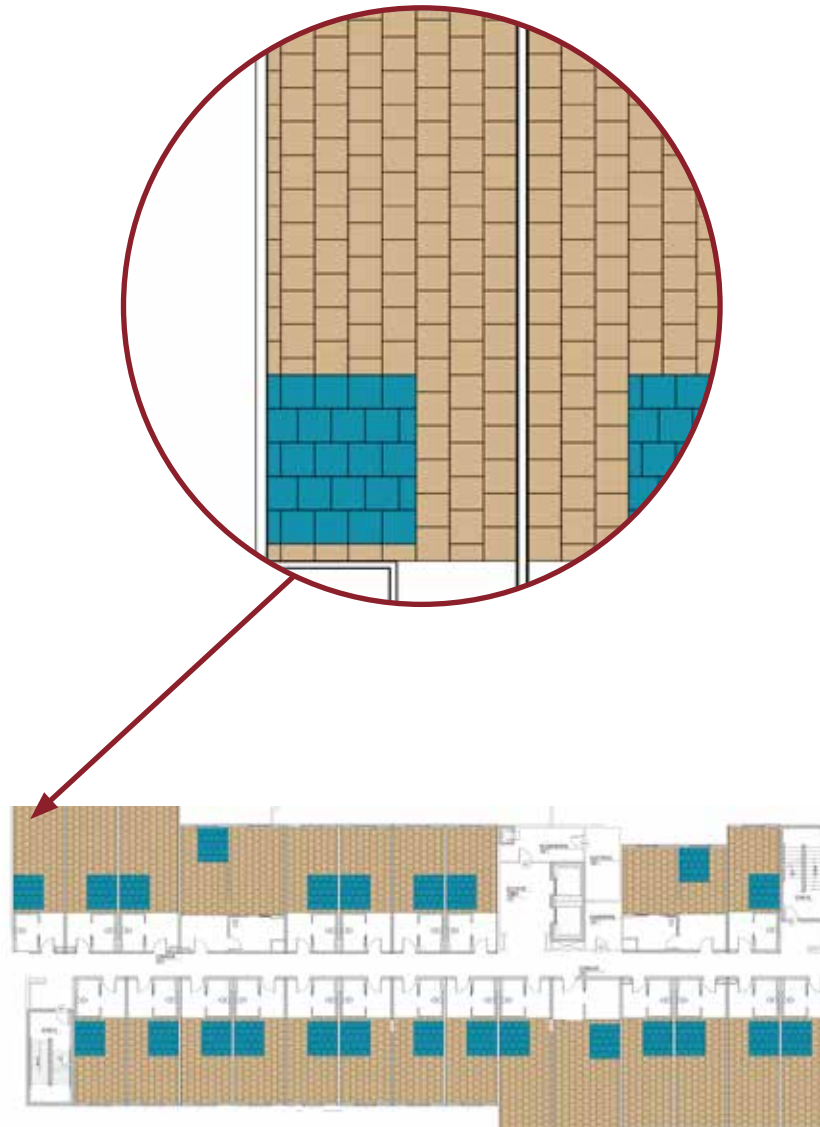


PRODUCT	ITEM#	COLOR#	SAMPLE#	SIZE	INSTALLATION
A Platform	(B) CP-03	9332 Soapstone		50 cm x 50 cm	Brick
B Custom	(B) CP-04	256794-187	188436	50 cm x 50 cm	Brick

INSTALLATION SPECIFICATIONS	DESCRIPTION
XL2000 PLUS Adhesive	Double stick install

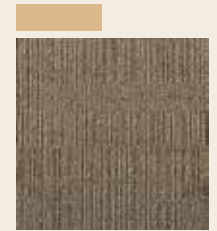
TRIBECA GUESTROOM INSTALLATION PLAN

All quantities are estimates only and are based on plans provided. Site measurements and field verifications are recommended to ensure accuracy. These quantities are not intended to be used for material ordering purposes. Since waste factors may vary by installer, actual ordering quantities are the responsibility of your flooring contractor.



LEGEND

A



PRODUCT: Platform
ITEM: (B) CP-03
COLOR: 9332 Soapstone
SIZE: 50 cm x 50 cm
INSTALLED: Brick

B



PRODUCT: Custom
ITEM: (B) CP-04
SAMPLE/COLOR: 188436_256794-187
SIZE: 50 cm x 50 cm
INSTALLED: Brick

Interface®

TRU BY HILTON



APPROVED PROTOTYPES

Hampton Inn by Hilton
Hilton Garden Inn
Home2 Suites
Tru by Hilton

LOBBY PROTOTYPE ORDER INFORMATION

Carpet tiles **SAVE APPROXIMATELY 18%-20% IN PRODUCT WASTE** versus broadloom, based on prototype layout.

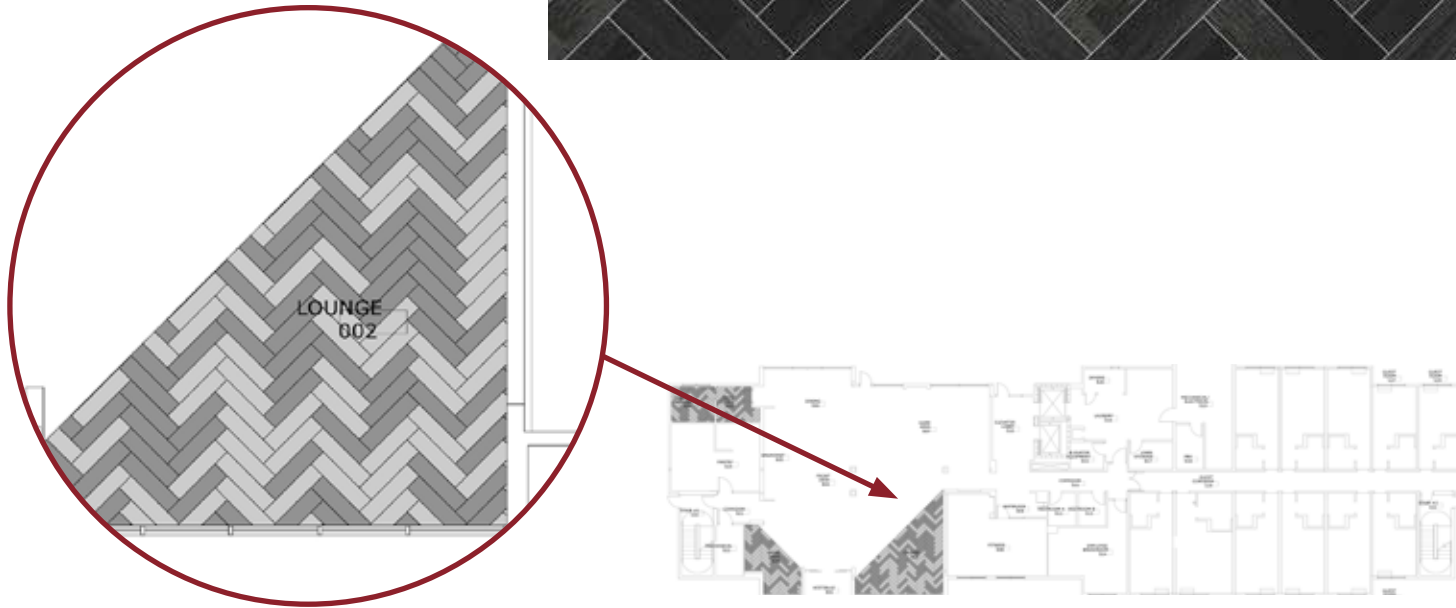


PRODUCT	ITEM#	COLOR#	SIZE	INSTALLATION
A AE311	C-05-A.1	104674 Smoke	25 cm x 1 m	Herringbone
B AE311	C-05-A.2	104675 Ink	25 cm x 1 m	Herringbone

INSTALLATION SPECIFICATIONS	DESCRIPTION
XL2000 PLUS Adhesive	Double stick install

LOBBY INSTALLATION PLAN

All quantities are estimates only and are based on plans provided. Site measurements and field verifications are recommended to ensure accuracy. These quantities are not intended to be used for material ordering purposes. Since waste factors may vary by installer, actual ordering quantities are the responsibility of your flooring contractor.



LEGEND

A



PRODUCT: AE311
ITEM: C-05-A.1
COLOR: 104674 Smoke
SIZE: 25 cm x 1 m
INSTALLED: Herringbone

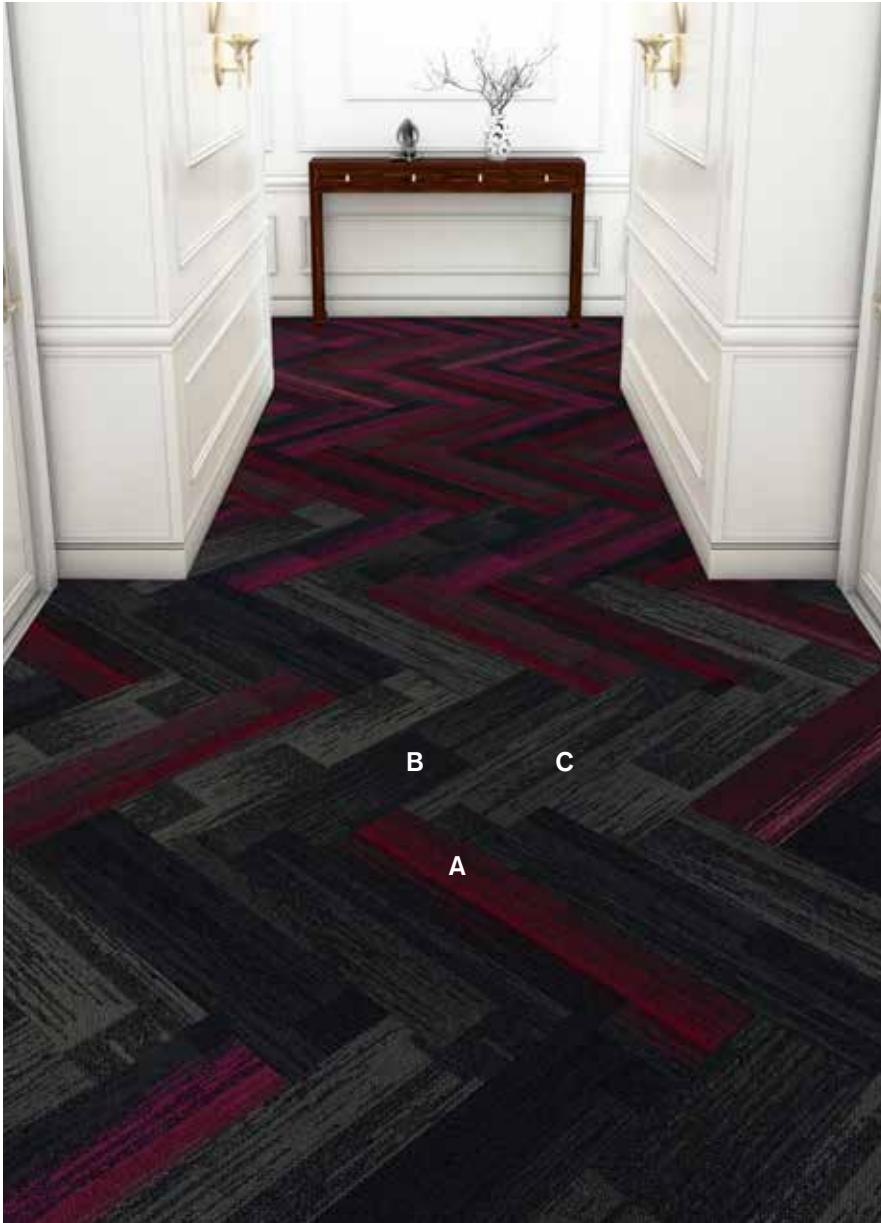
B



PRODUCT: AE311
ITEM: C-05-A.2
COLOR: 104675 Ink
SIZE: 25 cm x 1 m
INSTALLED: Herringbone

CORRIDOR PROTOTYPE ORDER INFORMATION

Carpet tiles **SAVE APPROXIMATELY 18%-20% IN PRODUCT WASTE** verses broadloom, based on prototype layout.

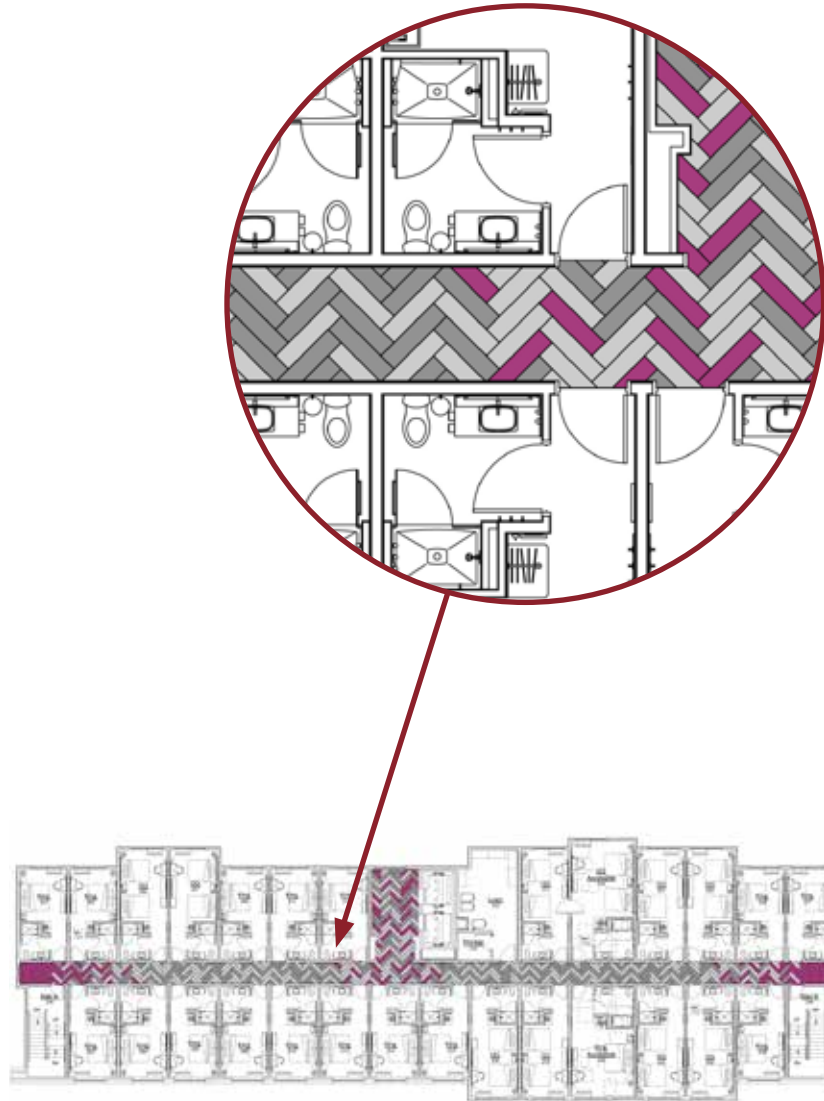


PRODUCT	ITEM#	COLOR#	SIZE	INSTALLATION
A AE315	C-06-A.3	105814 Ink/Magenta	25 cm x 1 m	Herringbone
B AE311	C-06-A.2	104675 Ink	25 cm x 1 m	Herringbone
C AE311	C-06-A.1	104674 Smoke	25 cm x 1 m	Herringbone

INSTALLATION SPECIFICATIONS	DESCRIPTION
XL2000 PLUS Adhesive	Double stick install

CORRIDOR INSTALLATION PLAN

All quantities are estimates only and are based on plans provided. Site measurements and field verifications are recommended to ensure accuracy. These quantities are not intended to be used for material ordering purposes. Since waste factors may vary by installer, actual ordering quantities are the responsibility of your flooring contractor.



LEGEND

A



PRODUCT: AE315
ITEM: C-06-A.3
COLOR: 105814 Ink/Magenta
SIZE: 25 cm x 1 m
INSTALLED: Herringbone

B



PRODUCT: AE311
ITEM: C-06-A.2
COLOR: 104675 Ink
SIZE: 25 cm x 1 m
INSTALLED: Herringbone

C



PRODUCT: AE311
ITEM: C-06-A.1
COLOR: 104674 Smoke
SIZE: 25 cm x 1 m
INSTALLED: Herringbone

GUESTROOM PROTOTYPE ORDER INFORMATION

Carpet tiles **SAVE APPROXIMATELY 18%-20% IN PRODUCT WASTE** verses broadloom, based on prototype layout.

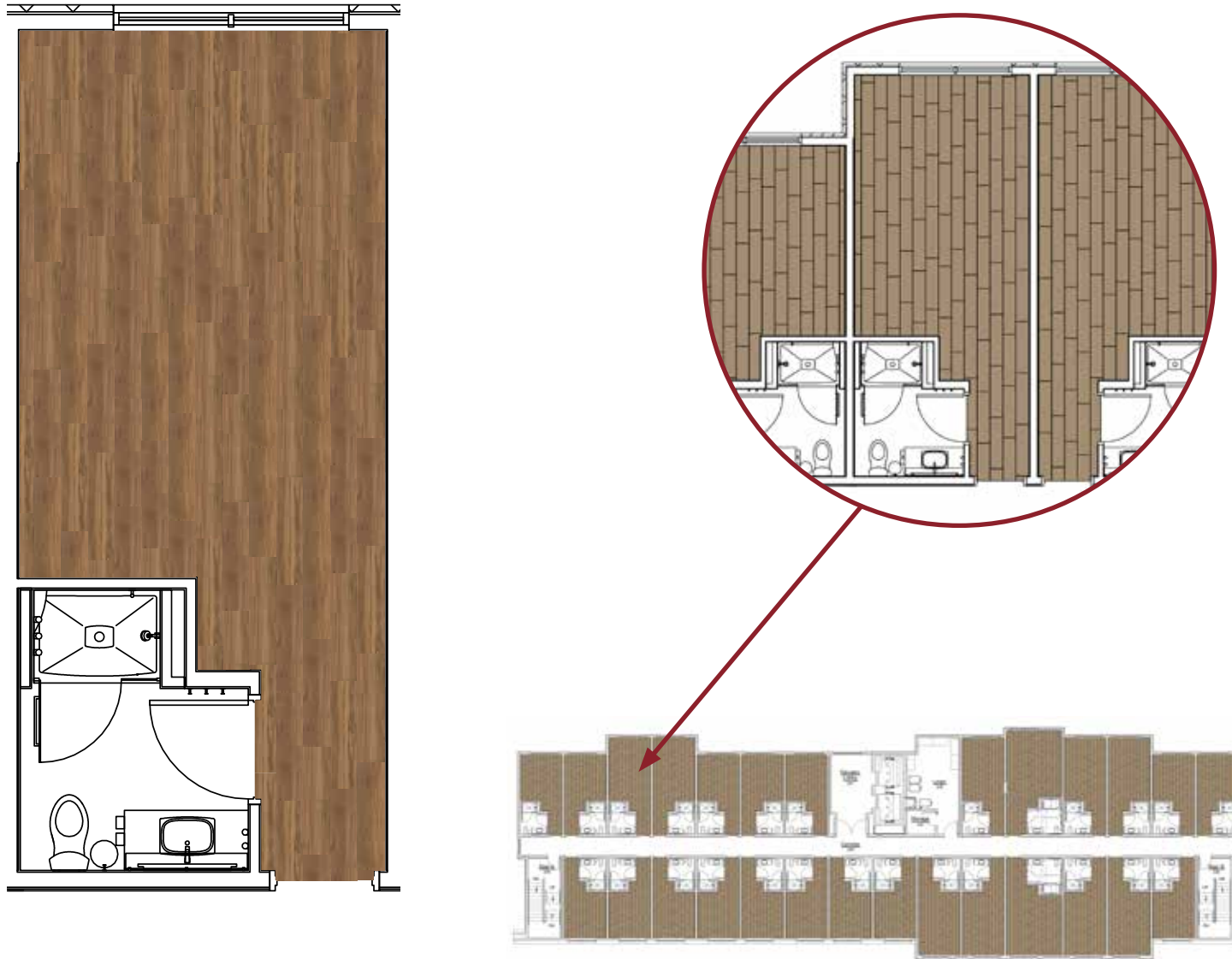


PRODUCT	ITEM#	COLOR#	SIZE	INSTALLATION
LVT Natural Woodgrains	VF-06A	A00204 Beech	25 cm x 1 m	Ashlar

INSTALLATION SPECIFICATIONS	DESCRIPTION
XL2000 PLUS Adhesive	Double stick install

GUESTROOM INSTALLATION PLAN

All quantities are estimates only and are based on plans provided. Site measurements and field verifications are recommended to ensure accuracy. These quantities are not intended to be used for material ordering purposes. Since waste factors may vary by installer, actual ordering quantities are the responsibility of your flooring contractor.



LEGEND



PRODUCT: LVT Natural Woodgrains
ITEM: VF-06A
COLOR: A00204 Beech
SIZE: 25 cm x 1 m
INSTALLED: Ashlar