

Interface®

HILTON GARDEN INN



APPROVED PROTOTYPES

Hampton Inn by Hilton
Hilton Garden Inn
Home2 Suites
Tru by Hilton

WHY INTERFACE HOSPITALITY?

Interface Hospitality is a **HILTON HOTELS** approved supplier of carpet tile and LVT. We are currently approved on the following prototypes:

- Hampton Inn by Hilton
- Hilton Garden Inn
- Home2 Suites
- Tru by Hilton



SMART, EFFICIENT, AND BUILT TO LAST

Seamless Installation & Design Flexibility

Interface modular flooring tiles are designed for effortless installation with systems like TacTiles®—our no-glue solution that reduces VOCs and waste. Choose from multiple sizes and patterns to create tailored designs that fit your needs while optimizing material usage.

Cost Efficiency, Built-In

Reduce hidden costs with modular tiles—no roll sizes, no wasteful cuts, and an average of only 3-4% waste compared to broadloom's 14%. Our selective replacement system minimizes disruption, allowing you to replace flooring in stages and save up to 50% on replacement costs.

Durability You Can Count On

Every product is backed by a 15-year warranty, combining innovative features like Intersept® mold protection and Protekt2™ stain resistance for unparalleled longevity. With modular carpet, you're investing in a solution that performs and saves in the long run.



DESIGNED FOR PERFORMANCE AND PEOPLE

Innovative Fibers for Vibrant, Sustainable Style

All Interface carpet tiles are made from 100% solution-dyed nylon—engineered for vibrant, fade-resistant color without the need for water or harmful chemicals in production.

The Power of Integrated Systems

Interface tiles span a variety of sizes and textures, enabling endless creative possibilities. Our modular designs seamlessly integrate with LVT for holistic flooring solutions without transition strips, redefining design flexibility.

Health-Conscious Choices

Our Intersept® treatment guarantees mold protection and uses no halogens, heavy metals, or harmful chemicals. It's EPA-approved for safe use, ensuring healthier spaces for your guests and teams.

SUSTAINABILITY & END-OF-LIFE SOLUTIONS

Transparency at Every Step

Sustainability comes standard. With third-party certifications and 99% renewable energy powering our U.S. manufacturing, Interface delivers flooring that's both high-performing and environmentally conscious.

Recycling Made Simple with ReEntry®

Through ReEntry®, we reclaim and recycle used carpet tiles and Sound Choice™ LVT, keeping valuable materials out of landfills. As North America's only third-party-certified flooring recycling program, we set the benchmark for responsible end-of-life solutions.

Smarter Installations for a Smaller Footprint

TacTiles® eliminate the need for adhesives with carpet tiles, cutting installation waste by 90%. Combined with modular flooring's reduced waste profile, this innovation ensures your project leaves a lighter environmental footprint.

BLOOM LOBBY PROTOTYPE ORDER INFORMATION

Carpet tiles **SAVE APPROXIMATELY 18%-20% IN PRODUCT WASTE** versus broadloom, based on prototype layout.

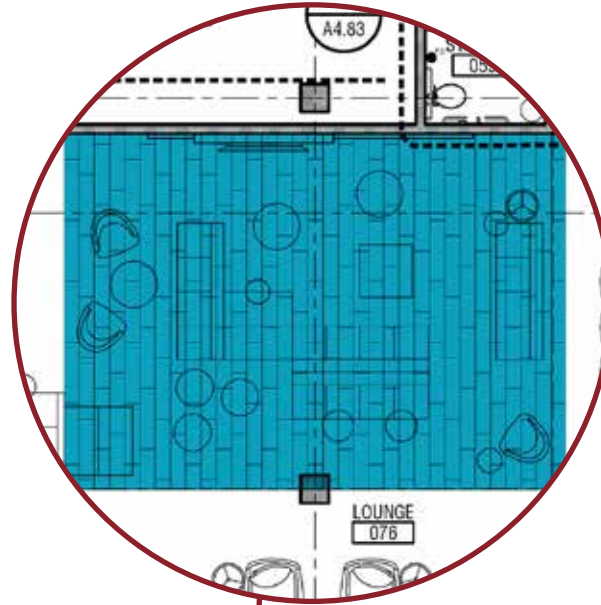
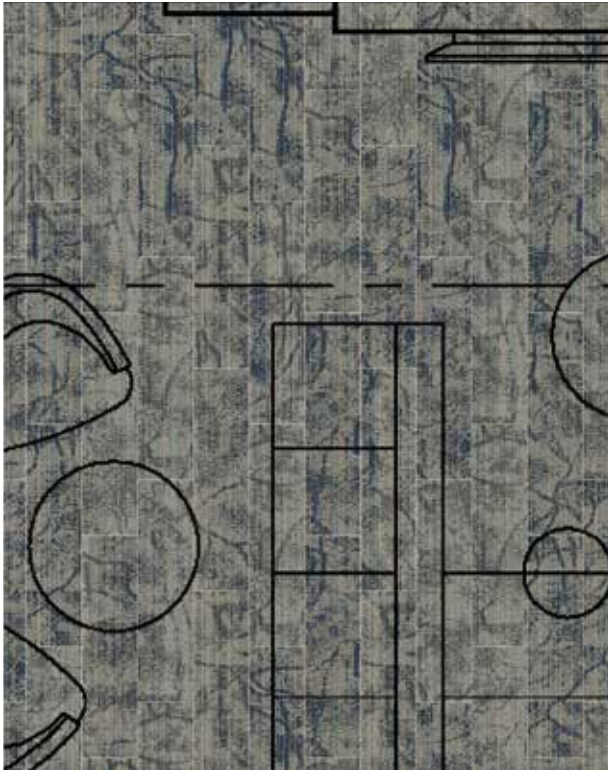


PRODUCT	ITEM#	COLOR#	SAMPLE#	SIZE	INSTALLATION
Custom	C-10	268520-125	189098	25 cm x 1 m	Ashlar

INSTALLATION SPECIFICATIONS	DESCRIPTION
XL2000 PLUS Adhesive	Double stick install

BLOOM LOBBY INSTALLATION PLAN

All quantities are estimates only and are based on plans provided. Site measurements and field verifications are recommended to ensure accuracy. These quantities are not intended to be used for material ordering purposes. Since waste factors may vary by installer, actual ordering quantities are the responsibility of your flooring contractor.



LEGEND



PRODUCT: Custom
ITEM: C-10
COLOR/SAMPLE:
189098_268520-125
SIZE: 25 cm x 1 m
INSTALLED: Ashlar

BLOOM CORRIDOR PROTOTYPE ORDER INFORMATION

Carpet tiles **SAVE APPROXIMATELY 18%-20% IN PRODUCT WASTE** versus broadloom, based on prototype layout.

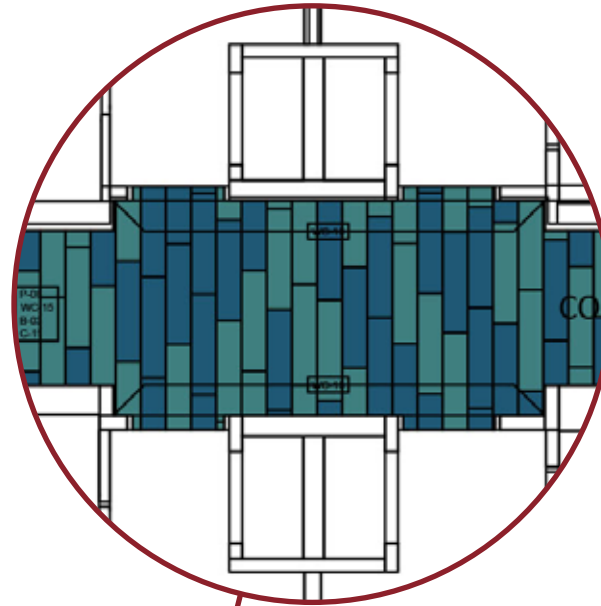


PRODUCT	ITEM#	COLOR#	SAMPLE#	SIZE	INSTALLATION
A Custom	C-12	268520-137	189096	25 cm x 1 m	Ashlar
B Custom	C-11	268520-122	189097	25 cm x1 m	Ashlar

INSTALLATION SPECIFICATIONS	DESCRIPTION
XL2000 PLUS Adhesive	Double stick install

BLOOM CORRIDOR INSTALLATION PLAN

All quantities are estimates only and are based on plans provided. Site measurements and field verifications are recommended to ensure accuracy. These quantities are not intended to be used for material ordering purposes. Since waste factors may vary by installer, actual ordering quantities are the responsibility of your flooring contractor.



LEGEND

A



PRODUCT: Custom
ITEM: C-12
COLOR/SAMPLE:
189096_268520-137
SIZE: 25 cm x 1 m
INSTALLED: Ashlar

B



PRODUCT: Custom
ITEM: C-11
COLOR/SAMPLE:
189097_268520-122
SIZE: 25 cm x 1 m
INSTALLED: Ashlar

BLOOM GUESTROOM PROTOTYPE ORDER INFORMATION

Carpet tiles **SAVE APPROXIMATELY 18%-20% IN PRODUCT WASTE** versus broadloom, based on prototype layout.

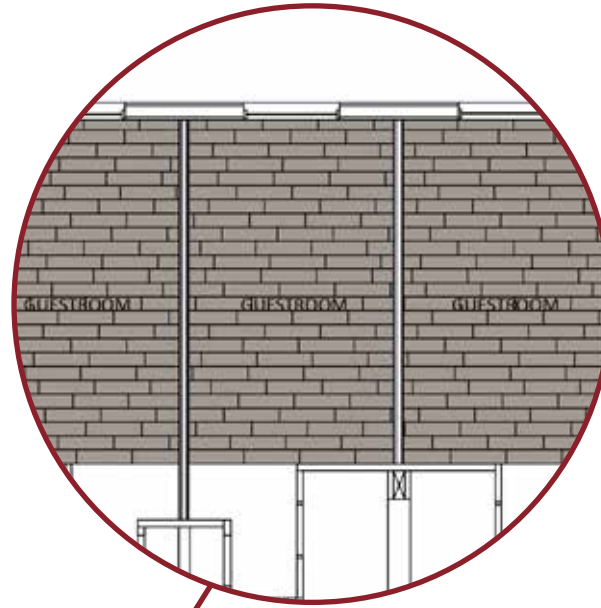


PRODUCT	ITEM#	COLOR#	SAMPLE#	SIZE	INSTALLATION
Snow Moon	C-01	268520-134	189092	25 cm x 1	Ashlar

INSTALLATION SPECIFICATIONS	DESCRIPTION
XL2000 PLUS Adhesive	Double stick install

BLOOM GUESTROOM INSTALLATION PLAN

All quantities are estimates only and are based on plans provided. Site measurements and field verifications are recommended to ensure accuracy. These quantities are not intended to be used for material ordering purposes. Since waste factors may vary by installer, actual ordering quantities are the responsibility of your flooring contractor.



LEGEND



PRODUCT: Snow Moon
ITEM: C-01
COLOR/SAMPLE:
189092_268520-134
SIZE: 25 cm x 1 m
INSTALLED: Ashlar

BLOOM MEETING ROOM PROTOTYPE ORDER INFORMATION

Carpet tiles **SAVE APPROXIMATELY 18%-20% IN PRODUCT WASTE** versus broadloom, based on prototype layout.

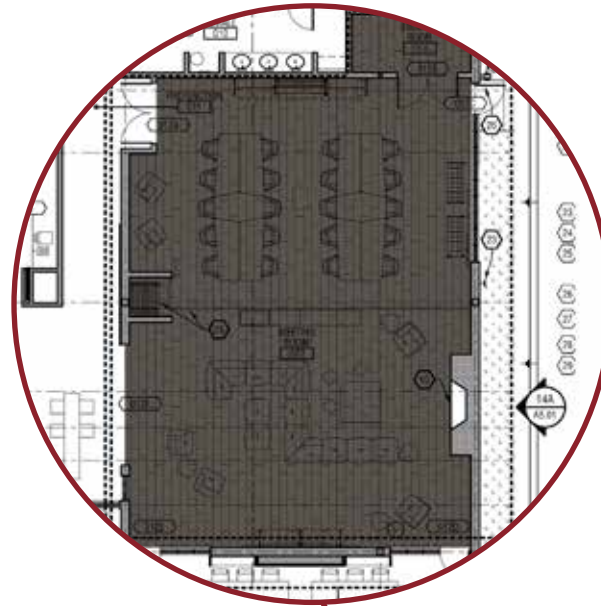
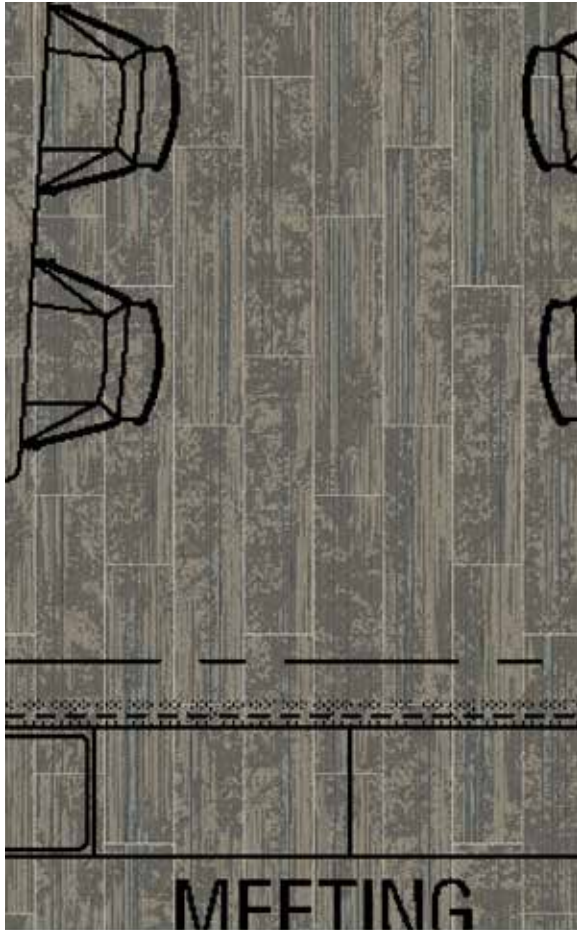


PRODUCT	ITEM#	COLOR#	SAMPLE#	SIZE	INSTALLATION
Custom	C-13	268520-128	189099	25 cm x 1 m	Ashlar

INSTALLATION SPECIFICATIONS	DESCRIPTION
XL2000 PLUS Adhesive	Double stick install

BLOOM MEETING ROOM INSTALLATION PLAN

All quantities are estimates only and are based on plans provided. Site measurements and field verifications are recommended to ensure accuracy. These quantities are not intended to be used for material ordering purposes. Since waste factors may vary by installer, actual ordering quantities are the responsibility of your flooring contractor.



LEGEND



PRODUCT: Custom
ITEM: C-13
COLOR/SAMPLE:
189099_268520-128
SIZE: 25 cm x 1 m
INSTALLED: Ashlar

BLOOM BREAKROOM PROTOTYPE ORDER INFORMATION

Carpet tiles **SAVE APPROXIMATELY 18%-20% IN PRODUCT WASTE** versus broadloom, based on prototype layout.

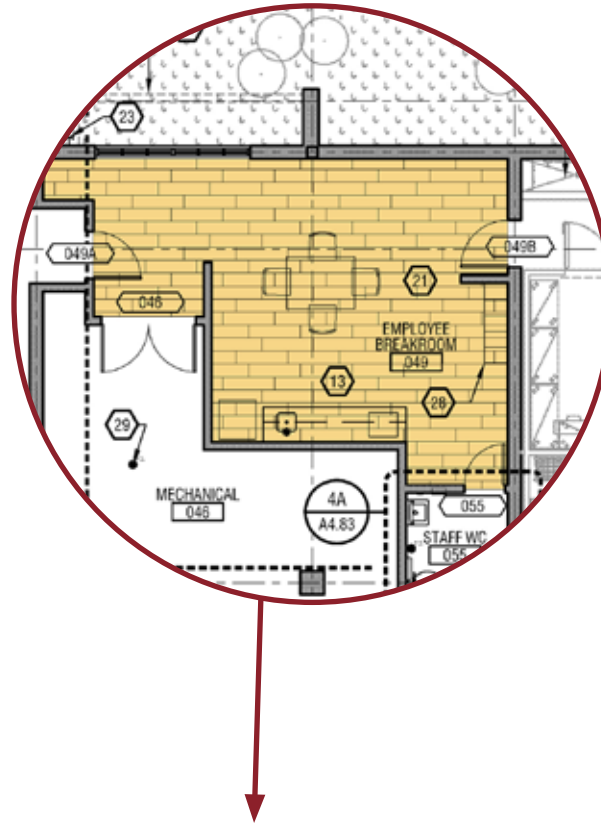


PRODUCT	ITEM#	COLOR#	SIZE	INSTALLATION
LVT Natural Woodgrains	C-15	A00204 Beech	25 cm x 1 m	Ashlar

INSTALLATION SPECIFICATIONS	DESCRIPTION
XL2000 PLUS Adhesive	Double stick install

BLOOM BREAKROOM INSTALLATION PLAN

All quantities are estimates only and are based on plans provided. Site measurements and field verifications are recommended to ensure accuracy. These quantities are not intended to be used for material ordering purposes. Since waste factors may vary by installer, actual ordering quantities are the responsibility of your flooring contractor.



LEGEND



PRODUCT: LVT Natural Woodgrains
ITEM: C-15
COLOR: A00204 Beech
SIZE: 25 cm x 1 m
INSTALLED: Ashlar

BLOOM OFFICE PROTOTYPE ORDER INFORMATION

Carpet tiles **SAVE APPROXIMATELY 18%-20% IN PRODUCT WASTE** versus broadloom, based on prototype layout.

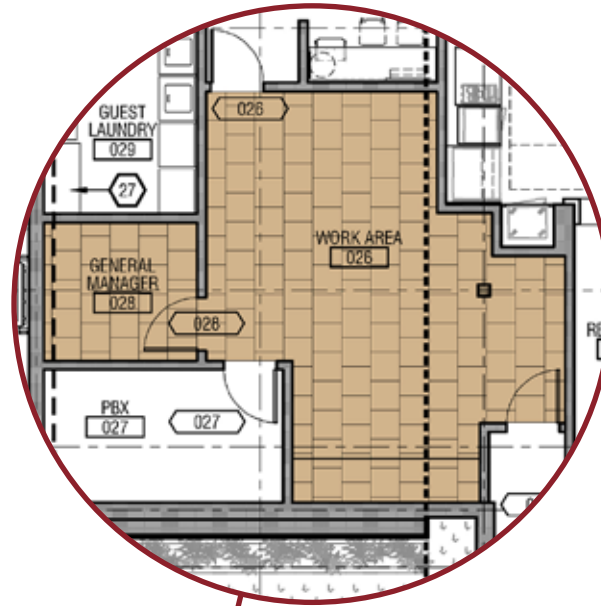
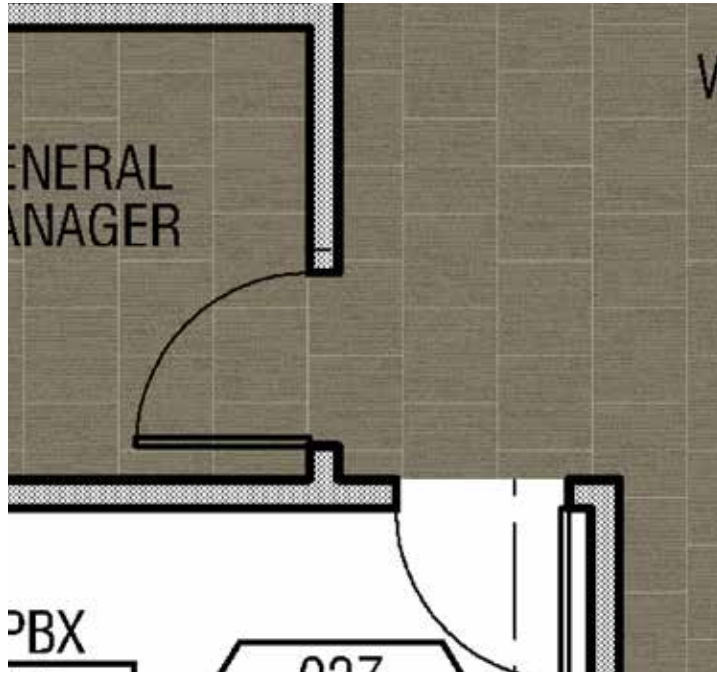


PRODUCT	ITEM#	COLOR#	SIZE	INSTALLATION
Platform	C-14	9332 Soapstone	50 cm x 50 cm	Brick

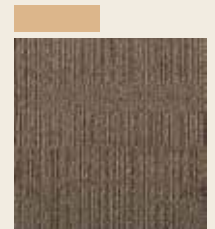
INSTALLATION SPECIFICATIONS	DESCRIPTION
XL2000 PLUS Adhesive	Double stick install

BLOOM OFFICE INSTALLATION PLAN

All quantities are estimates only and are based on plans provided. Site measurements and field verifications are recommended to ensure accuracy. These quantities are not intended to be used for material ordering purposes. Since waste factors may vary by installer, actual ordering quantities are the responsibility of your flooring contractor.



LEGEND



PRODUCT: Platform
ITEM: C-14
COLOR: 9332 Soapstone
SIZE: 50 cm x 50 cm
INSTALLED: Brick

REVIVE LOBBY PROTOTYPE ORDER INFORMATION

Carpet tiles **SAVE APPROXIMATELY 18%-20% IN PRODUCT WASTE** versus broadloom, based on prototype layout.

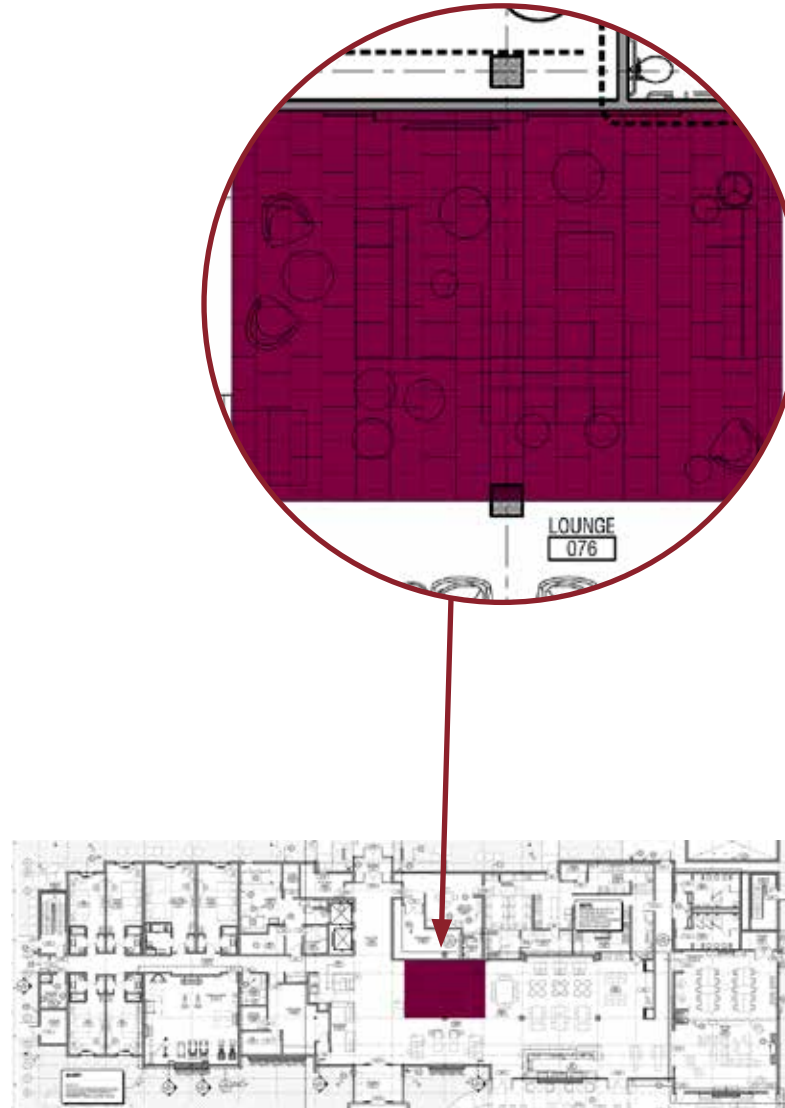
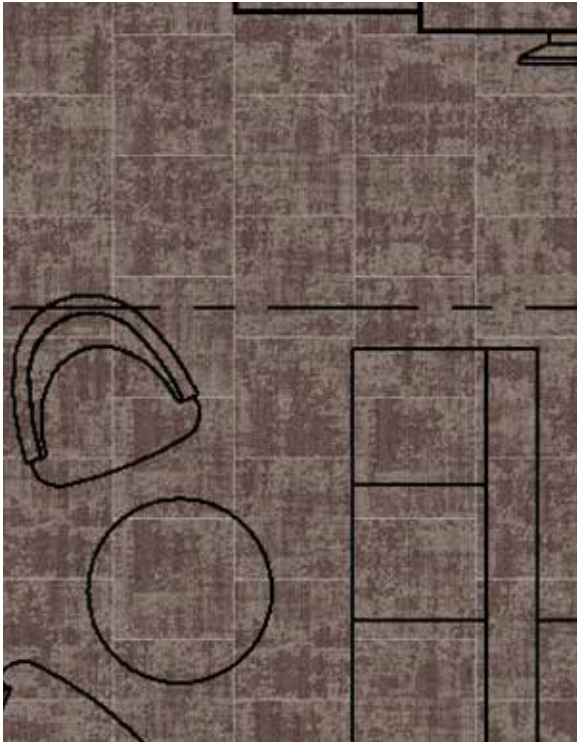


PRODUCT	ITEM#	COLOR#	SAMPLE#	SIZE	INSTALLATION
Cloud Cover	C-10	265520-094	189093	50 cm x 50 cm	Ashlar

INSTALLATION SPECIFICATIONS	DESCRIPTION
XL2000 PLUS Adhesive	Double stick install

REVIVE LOBBY INSTALLATION PLAN

All quantities are estimates only and are based on plans provided. Site measurements and field verifications are recommended to ensure accuracy. These quantities are not intended to be used for material ordering purposes. Since waste factors may vary by installer, actual ordering quantities are the responsibility of your flooring contractor.



LEGEND



PRODUCT: Cloud Cover
ITEM: C-10
COLOR/SAMPLE:
189093_265520-094
SIZE: 50 cm x 50 cm
INSTALLED: Ashlar

REVIVE CORRIDOR PROTOTYPE ORDER INFORMATION

Carpet tiles **SAVE APPROXIMATELY 18%-20% IN PRODUCT WASTE** versus broadloom, based on prototype layout.

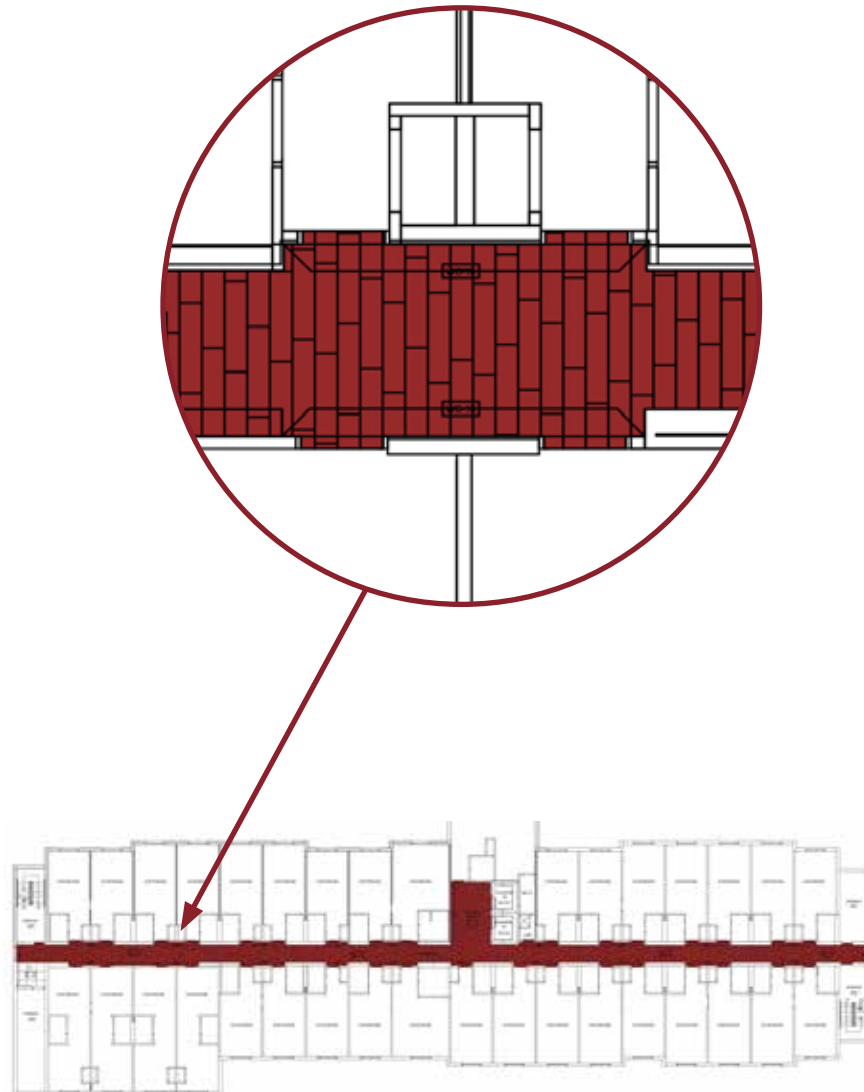


PRODUCT	ITEM#	COLOR#	SAMPLE#	SIZE	INSTALLATION
Custom	C-11	265520-107	189100	25 cm x 1 m	Ashlar

INSTALLATION SPECIFICATIONS	DESCRIPTION
XL2000 PLUS Adhesive	Double stick install

REVIVE CORRIDOR INSTALLATION PLAN

All quantities are estimates only and are based on plans provided. Site measurements and field verifications are recommended to ensure accuracy. These quantities are not intended to be used for material ordering purposes. Since waste factors may vary by installer, actual ordering quantities are the responsibility of your flooring contractor.



LEGEND



PRODUCT: Custom
ITEM: C-11
COLOR/SAMPLE:
189100_265520-107
SIZE: 25 cm x 1 m
INSTALLED: Ashlar

REVIVE GUESTROOM PROTOTYPE ORDER INFORMATION

Carpet tiles **SAVE APPROXIMATELY 18%-20% IN PRODUCT WASTE** versus broadloom, based on prototype layout.

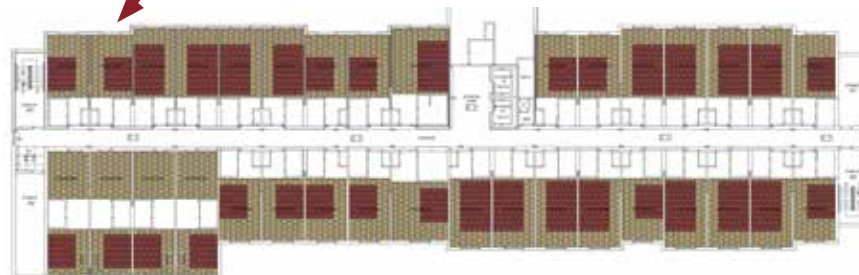
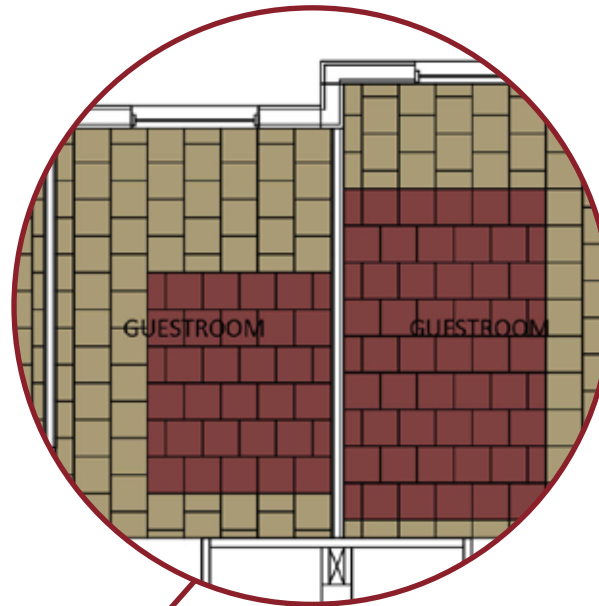
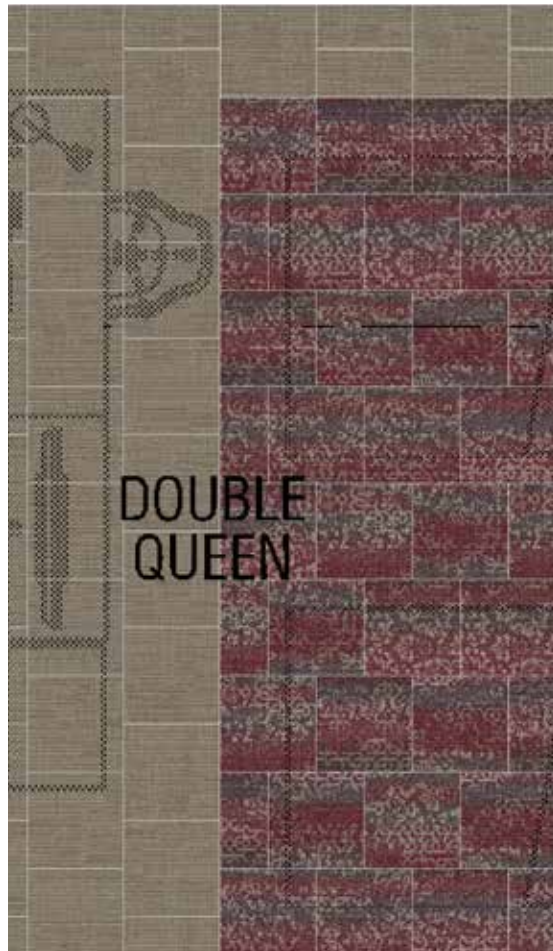


PRODUCT	ITEM#	COLOR#	SAMPLE#	SIZE	INSTALLATION
A Platform	C-01	265520-102	189095	50 cm x 50 cm	Brick
B Custom	C-02	265520-105	189101	50 cm x 50 cm	Ashlar

INSTALLATION SPECIFICATIONS	DESCRIPTION
XL2000 PLUS Adhesive	Double stick install

REVIVE GUESTROOM INSTALLATION PLAN

All quantities are estimates only and are based on plans provided. Site measurements and field verifications are recommended to ensure accuracy. These quantities are not intended to be used for material ordering purposes. Since waste factors may vary by installer, actual ordering quantities are the responsibility of your flooring contractor.



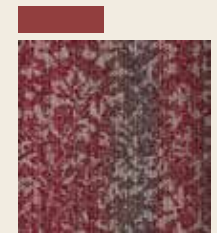
LEGEND

A



PRODUCT: Platform
ITEM: C-01
COLOR/SAMPLE:
189095_265520-102
SIZE: 50 cm x 50 cm
INSTALLED: Brick

B



PRODUCT: Custom
ITEM: C-02
COLOR/SAMPLE:
189101_265520-105
SIZE: 50 cm x 50 cm
INSTALLED: Ashlar

REVIVE MEETING ROOM PROTOTYPE ORDER INFORMATION

Carpet tiles **SAVE APPROXIMATELY 18%-20% IN PRODUCT WASTE** versus broadloom, based on prototype layout.

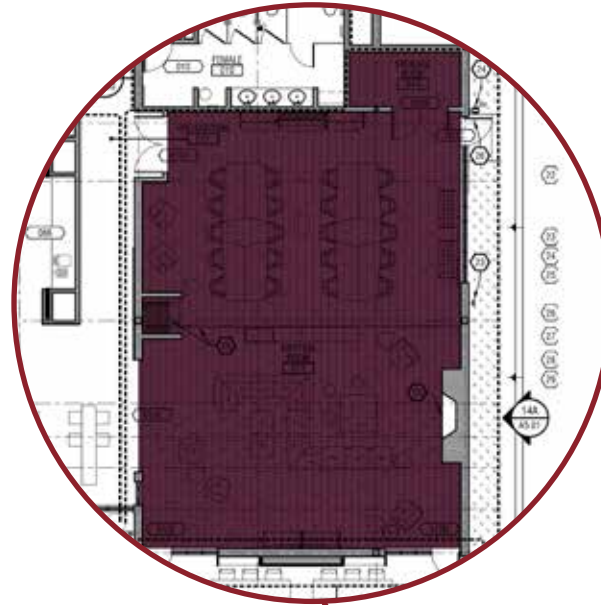
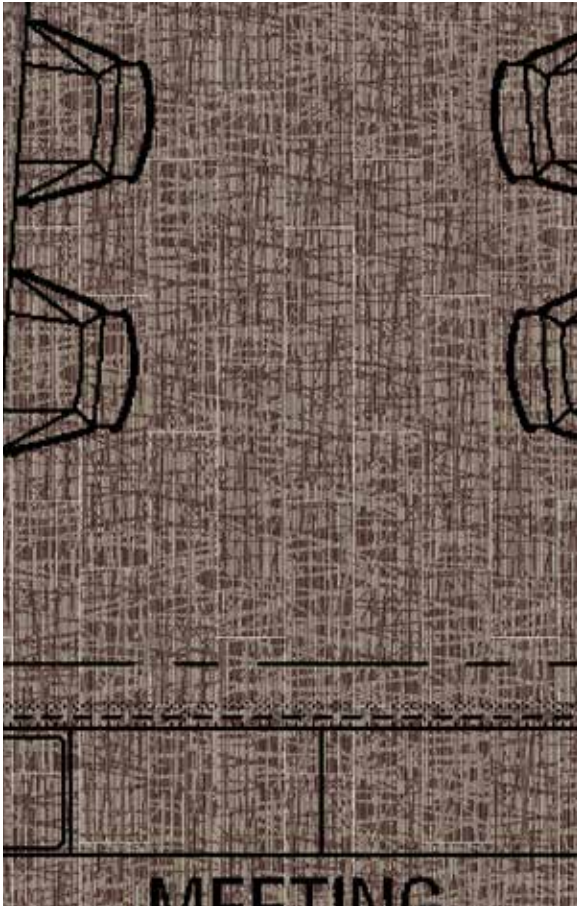


PRODUCT	ITEM#	COLOR#	SAMPLE#	SIZE	INSTALLATION
WE153	C-13	265520-108	189094	25 cm x 1 m	Ashlar

INSTALLATION SPECIFICATIONS	DESCRIPTION
XL2000 PLUS Adhesive	Double stick install

REVIVE MEETING ROOM INSTALLATION PLAN

All quantities are estimates only and are based on plans provided. Site measurements and field verifications are recommended to ensure accuracy. These quantities are not intended to be used for material ordering purposes. Since waste factors may vary by installer, actual ordering quantities are the responsibility of your flooring contractor.



LEGEND



PRODUCT: WE153
ITEM: C-13
COLOR/SAMPLE:
189094_265520-108
SIZE: 25 cm x 1 m
INSTALLED: Ashlar

REVIVE BREAKROOM PROTOTYPE ORDER INFORMATION

Carpet tiles **SAVE APPROXIMATELY 18%-20% IN PRODUCT WASTE** versus broadloom, based on prototype layout.

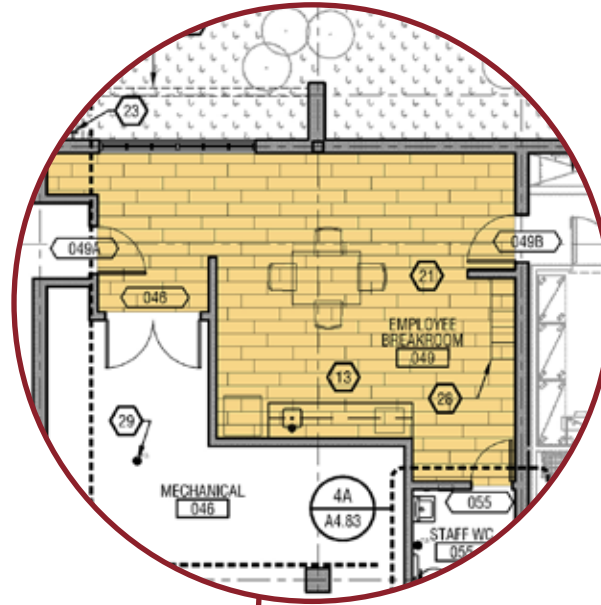


PRODUCT	ITEM#	COLOR#	SIZE	INSTALLATION
LVT Natural Woodgrains	C-15	A00204 Beech	25 cm x 1 m	Ashlar

INSTALLATION SPECIFICATIONS	DESCRIPTION
XL2000 PLUS Adhesive	Double stick install

REVIVE BREAKROOM INSTALLATION PLAN

All quantities are estimates only and are based on plans provided. Site measurements and field verifications are recommended to ensure accuracy. These quantities are not intended to be used for material ordering purposes. Since waste factors may vary by installer, actual ordering quantities are the responsibility of your flooring contractor.



LEGEND



PRODUCT: LVT Natural Woodgrains
ITEM: C-15
COLOR: A00204 Beech
SIZE: 25 cm x 1 m
INSTALLED: Ashlar

REVIVE OFFICE PROTOTYPE ORDER INFORMATION

Carpet tiles **SAVE APPROXIMATELY 18%-20% IN PRODUCT WASTE** versus broadloom, based on prototype layout.

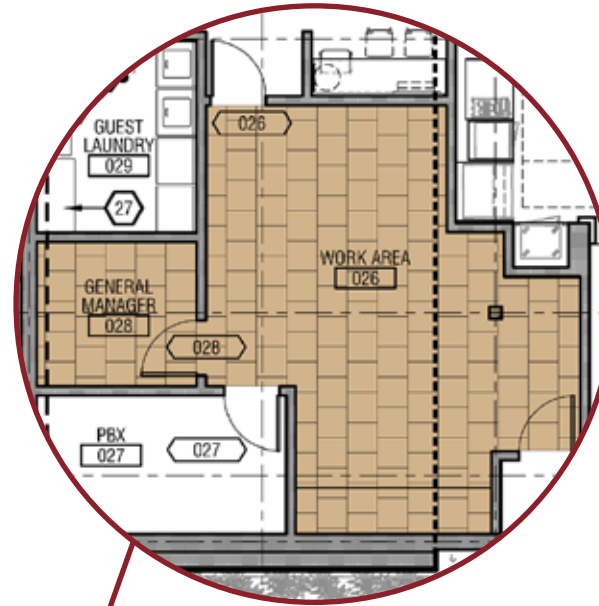
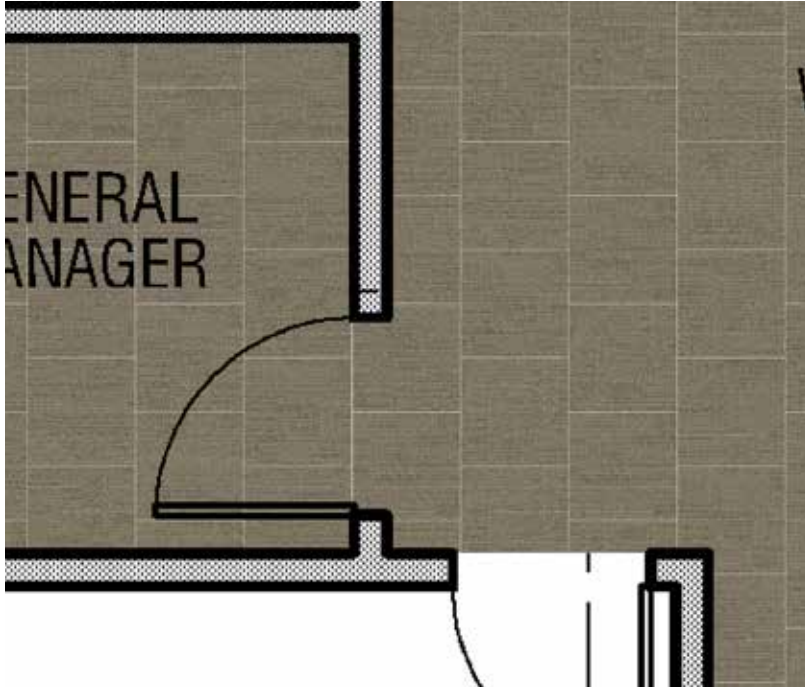


PRODUCT	ITEM#	COLOR#	SIZE	INSTALLATION
Platform	C-14	9332 Soapstone	50 cm x 50 cm	Brick

INSTALLATION SPECIFICATIONS	DESCRIPTION
XL2000 PLUS Adhesive	Double stick install

REVIVE OFFICE INSTALLATION PLAN

All quantities are estimates only and are based on plans provided. Site measurements and field verifications are recommended to ensure accuracy. These quantities are not intended to be used for material ordering purposes. Since waste factors may vary by installer, actual ordering quantities are the responsibility of your flooring contractor.



LEGEND



PRODUCT: Platform
ITEM: C-14
COLOR: 9332 Soapstone
SIZE: 50 cm x 50 cm
INSTALLED: Brick