

Interface®

# HAMPTON INN BY HILTON



## APPROVED PROTOTYPES

Hampton Inn by Hilton  
Hilton Garden Inn  
Home2 Suites  
Tru by Hilton

# WHY INTERFACE HOSPITALITY?

Interface Hospitality is a **HILTON HOTELS** approved supplier of carpet tile and LVT. We are currently approved on the following prototypes:

- Hampton Inn by Hilton
- Hilton Garden Inn
- Home2 Suites
- Tru by Hilton



## SMART, EFFICIENT, AND BUILT TO LAST

### Seamless Installation & Design Flexibility

Interface modular flooring tiles are designed for effortless installation with systems like TacTiles®—our no-glue solution that reduces VOCs and waste. Choose from multiple sizes and patterns to create tailored designs that fit your needs while optimizing material usage.

### Cost Efficiency, Built-In

Reduce hidden costs with modular tiles—no roll sizes, no wasteful cuts, and an average of only 3-4% waste compared to broadloom's 14%. Our selective replacement system minimizes disruption, allowing you to replace flooring in stages and save up to 50% on replacement costs.

### Durability You Can Count On

Every product is backed by a 15-year warranty, combining innovative features like Intersept® mold protection and Protekt2™ stain resistance for unparalleled longevity. With modular carpet, you're investing in a solution that performs and saves in the long run.



## DESIGNED FOR PERFORMANCE AND PEOPLE

### Innovative Fibers for Vibrant, Sustainable Style

All Interface carpet tiles are made from 100% solution-dyed nylon—engineered for vibrant, fade-resistant color without the need for water or harmful chemicals in production.

### The Power of Integrated Systems

Interface tiles span a variety of sizes and textures, enabling endless creative possibilities. Our modular designs seamlessly integrate with LVT for holistic flooring solutions without transition strips, redefining design flexibility.

### Health-Conscious Choices

Our Intersept® treatment guarantees mold protection and uses no halogens, heavy metals, or harmful chemicals. It's EPA-approved for safe use, ensuring healthier spaces for your guests and teams.

## SUSTAINABILITY & END-OF-LIFE SOLUTIONS

### Transparency at Every Step

Sustainability comes standard. With third-party certifications and 99% renewable energy powering our U.S. manufacturing, Interface delivers flooring that's both high-performing and environmentally conscious.

### Recycling Made Simple with ReEntry®

Through ReEntry®, we reclaim and recycle used carpet tiles and Sound Choice™ LVT, keeping valuable materials out of landfills. As North America's only third-party-certified flooring recycling program, we set the benchmark for responsible end-of-life solutions.

### Smarter Installations for a Smaller Footprint

TacTiles® eliminate the need for adhesives with carpet tiles, cutting installation waste by 90%. Combined with modular flooring's reduced waste profile, this innovation ensures your project leaves a lighter environmental footprint.

## CASUAL LOBBY PROTOTYPE ORDER INFORMATION

Carpet tiles **SAVE APPROXIMATELY 18%-20% IN PRODUCT WASTE** versus broadloom, based on prototype layout.

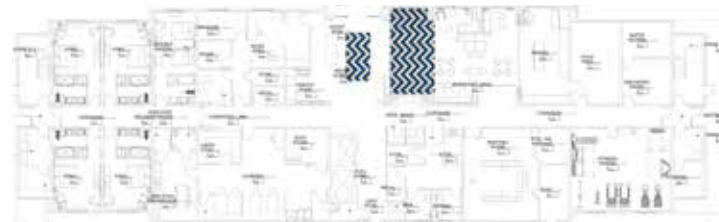


PRODUCT	ITEM#	COLOR#	SAMPLE#	SIZE	INSTALLATION
A Ground Waves	C-10 C-1	257617-089	189122	25 cm x 1 m	Herringbone
B Ground Waves	C-10 C-2	257617-091	189108	25 cm x 1 m	Herringbone

INSTALLATION SPECIFICATIONS	DESCRIPTION
XL2000 PLUS Adhesive	Double stick install

## CASUAL LOBBY INSTALLATION PLAN

All quantities are estimates only and are based on plans provided. Site measurements and field verifications are recommended to ensure accuracy. These quantities are not intended to be used for material ordering purposes. Since waste factors may vary by installer, actual ordering quantities are the responsibility of your flooring contractor.



## LEGEND

A



**PRODUCT:** Ground Waves  
**ITEM:** C-10 C-1  
**COLOR/SAMPLE:**  
189122\_257617-089  
**SIZE:** 25 cm x 1 m  
**INSTALLED:** Herringbone

B



**PRODUCT:** Ground Waves  
**ITEM:** C-10 C-2  
**COLOR/SAMPLE:**  
189108\_257617-091  
**SIZE:** 25 cm x 1 m  
**INSTALLED:** Herringbone

## CASUAL CORRIDOR PROTOTYPE ORDER INFORMATION

Carpet tiles **SAVE APPROXIMATELY 18%-20% IN PRODUCT WASTE** versus broadloom, based on prototype layout.



PRODUCT	ITEM#	COLOR#	SAMPLE#	SIZE	INSTALLATION
A Trio	C-11 C-1	268431-020	189113	25 cm x 1 m	Pattern by Tile
B Trio	C-11 C-2	268431-021	189112	25 cm x 1 m	Pattern by Tile
C GN160	C-11 C-3	268431-022	189111	25 cm x 1 m	Pattern by Tile
D Trio	C-11 C-1	268431-020	189113	25 cm x 1 m	Ashlar

INSTALLATION SPECIFICATIONS	DESCRIPTION
XL2000 PLUS Adhesive	Double stick install

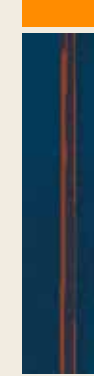
## CASUAL CORRIDOR INSTALLATION PLAN

All quantities are estimates only and are based on plans provided. Site measurements and field verifications are recommended to ensure accuracy. These quantities are not intended to be used for material ordering purposes. Since waste factors may vary by installer, actual ordering quantities are the responsibility of your flooring contractor.



## LEGEND

**A**



**PRODUCT:** Trio  
**ITEM:** C-11 C-1  
**COLOR/SAMPLE:**  
189113\_268431-020  
**SIZE:** 25 cm x 1 m  
**INSTALLED:** Pattern by Tile

**B**



**PRODUCT:** Trio  
**ITEM:** C-11 C-2  
**COLOR/SAMPLE:**  
189112\_268431-021  
**SIZE:** 25 cm x 1 m  
**INSTALLED:** Pattern by Tile

**C**



**PRODUCT:** GN160  
**ITEM:** C-11 C-3  
**COLOR/SAMPLE:**  
189111\_268431-022  
**SIZE:** 25 cm x 1 m  
**INSTALLED:** Pattern by Tile

**D**



**PRODUCT:** Trio  
**ITEM:** C-11 C-1  
**COLOR/SAMPLE:**  
189113\_268431-020  
**SIZE:** 25 cm x 1 m  
**INSTALLED:** Ashlar

## CASUAL GUESTROOM PROTOTYPE ORDER INFORMATION

Carpet tiles **SAVE APPROXIMATELY 18%-20% IN PRODUCT WASTE** versus broadloom, based on prototype layout.

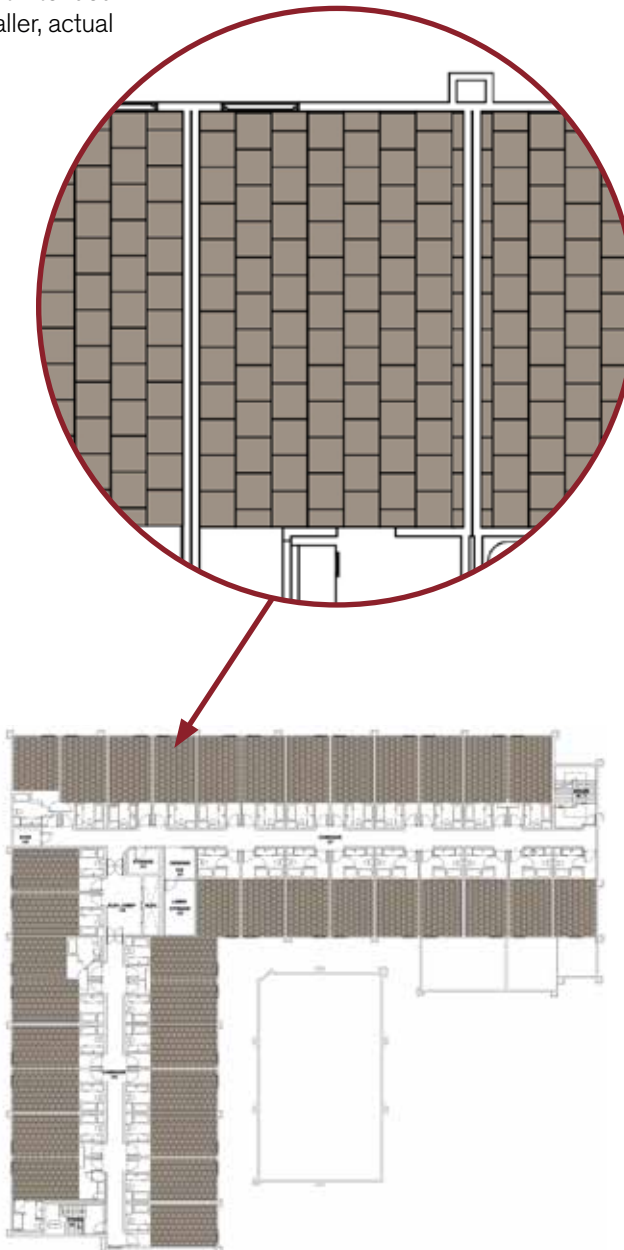


PRODUCT	ITEM#	COLOR#	SAMPLE#	SIZE	INSTALLATION
Main Line	C-01 C	268431-033	189109	50 cm x 50 cm	Brick

INSTALLATION SPECIFICATIONS	DESCRIPTION
XL2000 PLUS Adhesive	Double stick install

## CASUAL GUESTROOM INSTALLATION PLAN

All quantities are estimates only and are based on plans provided. Site measurements and field verifications are recommended to ensure accuracy. These quantities are not intended to be used for material ordering purposes. Since waste factors may vary by installer, actual ordering quantities are the responsibility of your flooring contractor.



### LEGEND



**PRODUCT:** Main Line  
**ITEM:** C-01 C  
**COLOR/SAMPLE:** 189109\_268431-033  
**SIZE:** 50 cm x 50 cm  
**INSTALLED:** Brick

## CASUAL MEETING ROOM PROTOTYPE ORDER INFORMATION

Carpet tiles **SAVE APPROXIMATELY 18%-20% IN PRODUCT WASTE** versus broadloom, based on prototype layout.

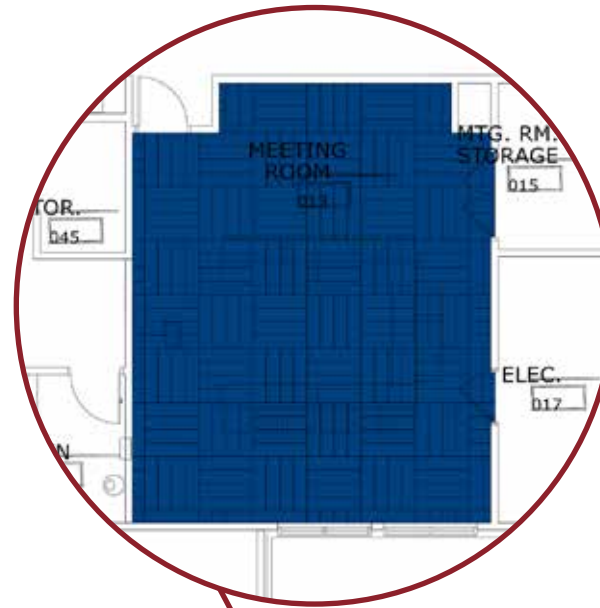


PRODUCT	ITEM#	COLOR#	SAMPLE#	SIZE	INSTALLATION
Ground Waves	C-12 C	257617-089	189122	25 cm x 1 m	Quarter Turn

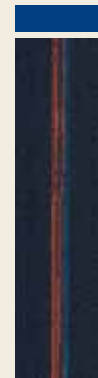
INSTALLATION SPECIFICATIONS	DESCRIPTION
XL2000 PLUS Adhesive	Double stick install

## CASUAL MEETING ROOM INSTALLATION PLAN

All quantities are estimates only and are based on plans provided. Site measurements and field verifications are recommended to ensure accuracy. These quantities are not intended to be used for material ordering purposes. Since waste factors may vary by installer, actual ordering quantities are the responsibility of your flooring contractor.



### LEGEND



**PRODUCT:** Ground Waves  
**ITEM:** C-12 C  
**COLOR/SAMPLE:**  
189122\_257617-089  
**SIZE:** 25 cm x 1 m  
**INSTALLED:** Quarter Turn

## CASUAL OFFICE PROTOTYPE ORDER INFORMATION

Carpet tiles **SAVE APPROXIMATELY 18%-20% IN PRODUCT WASTE** versus broadloom, based on prototype layout.

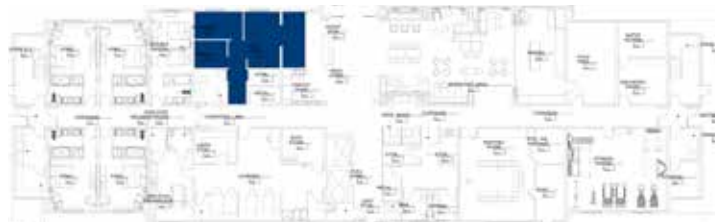
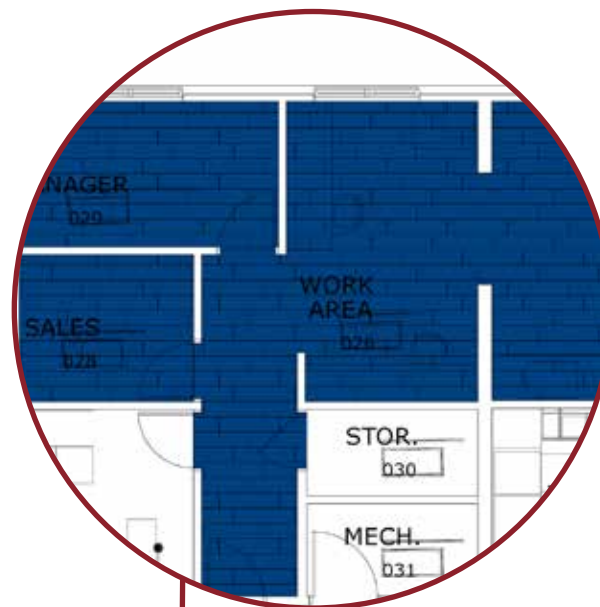


PRODUCT	ITEM#	COLOR#	SAMPLE#	SIZE	INSTALLATION
Ground Waves	C-13 C	257617-089	189122	25 cm x 1 m	Ashlar

INSTALLATION SPECIFICATIONS	DESCRIPTION
XL2000 PLUS Adhesive	Double stick install

## CASUAL OFFICE INSTALLATION PLAN

All quantities are estimates only and are based on plans provided. Site measurements and field verifications are recommended to ensure accuracy. These quantities are not intended to be used for material ordering purposes. Since waste factors may vary by installer, actual ordering quantities are the responsibility of your flooring contractor.



### LEGEND



**PRODUCT:** Ground Waves  
**ITEM:** C-13 C  
**COLOR/SAMPLE:**  
189122\_257617-089  
**SIZE:** 25 cm x 1 m  
**INSTALLED:** Ashlar

## CASUAL BREAKROOM PROTOTYPE ORDER INFORMATION

Carpet tiles **SAVE APPROXIMATELY 18%-20% IN PRODUCT WASTE** versus broadloom, based on prototype layout.

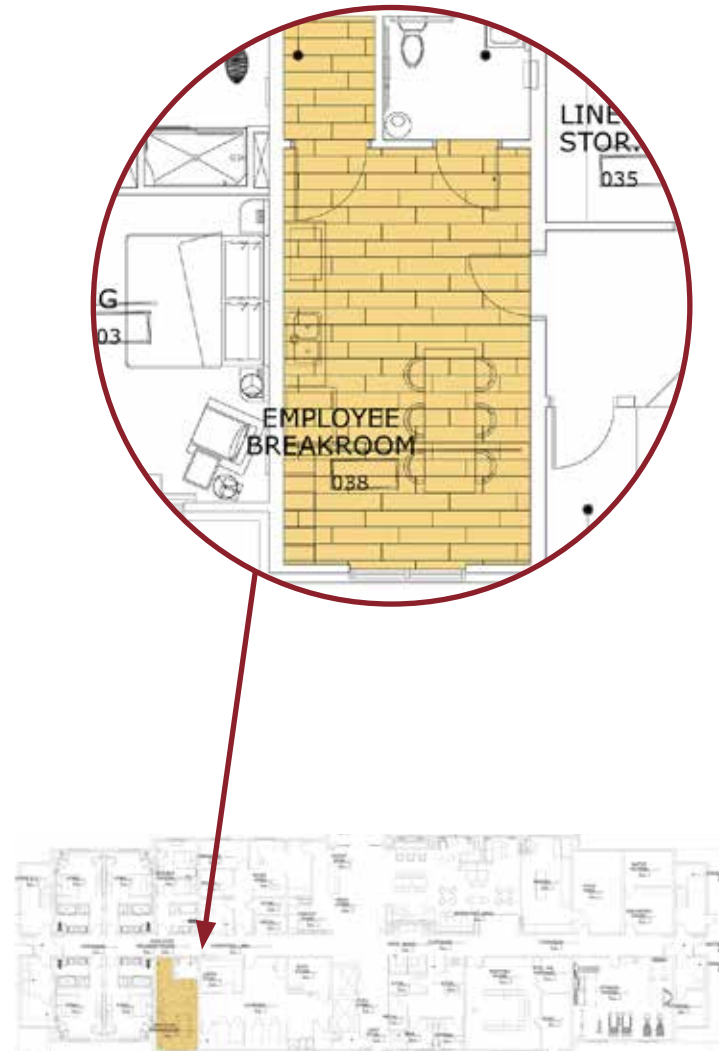


PRODUCT	ITEM#	COLOR#	SIZE	INSTALLATION
LVT Natural Woodgrains	LVT-15 C	A00204 Beech	25 cm x 1 m	Ashlar

INSTALLATION SPECIFICATIONS	DESCRIPTION
XL2000 PLUS Adhesive	Double stick install

## CASUAL BREAKROOM INSTALLATION PLAN

All quantities are estimates only and are based on plans provided. Site measurements and field verifications are recommended to ensure accuracy. These quantities are not intended to be used for material ordering purposes. Since waste factors may vary by installer, actual ordering quantities are the responsibility of your flooring contractor.



### LEGEND



**PRODUCT:** LVT Natural Woodgrains  
**ITEM:** LVT-15 C  
**COLOR:** A00204 Beech  
**SIZE:** 25 cm x 1 m  
**INSTALLED:** Ashlar

## CONFIDENT LOBBY PROTOTYPE ORDER INFORMATION

Carpet tiles **SAVE APPROXIMATELY 18%-20% IN PRODUCT WASTE** versus broadloom, based on prototype layout.

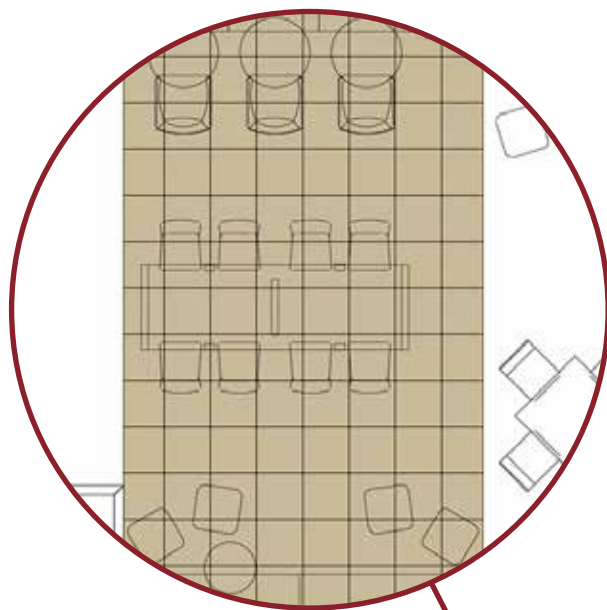


PRODUCT	ITEM#	COLOR#	SAMPLE#	SIZE	INSTALLATION
AE312	C-10 C	268431-039	189114	50 cm x 50 cm	Quarter Turn

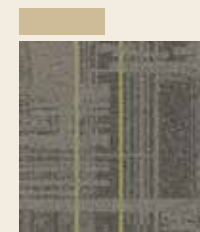
INSTALLATION SPECIFICATIONS	DESCRIPTION
XL2000 PLUS Adhesive	Double stick install

## CONFIDENT LOBBY INSTALLATION PLAN

All quantities are estimates only and are based on plans provided. Site measurements and field verifications are recommended to ensure accuracy. These quantities are not intended to be used for material ordering purposes. Since waste factors may vary by installer, actual ordering quantities are the responsibility of your flooring contractor.



## LEGEND



**PRODUCT:** AE312  
**ITEM:** C-10 C  
**COLOR/SAMPLE:** 189114\_268431-039  
**SIZE:** 50 cm x 50 cm  
**INSTALLED:** Quarter Turn

## CONFIDENT CORRIDOR PROTOTYPE ORDER INFORMATION

Carpet tiles **SAVE APPROXIMATELY 18%-20% IN PRODUCT WASTE** versus broadloom, based on prototype layout.

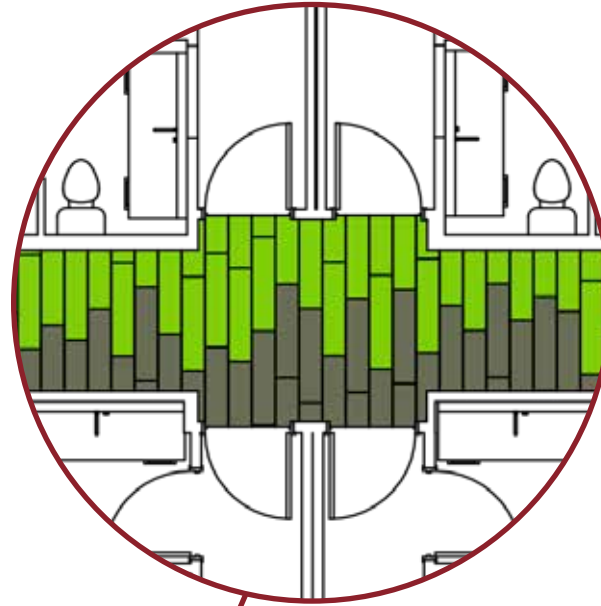


PRODUCT	ITEM#	COLOR#	SAMPLE#	SIZE	INSTALLATION
A Custom	C-11C-1	268458-055	189121	25 cm x 1 m	Ashlar
B Custom	C-11C-2	268458-056	189120	25 cm x 1 m	Ashlar

INSTALLATION SPECIFICATIONS	DESCRIPTION
XL2000 PLUS Adhesive	Double stick install

## CONFIDENT CORRIDOR INSTALLATION PLAN

All quantities are estimates only and are based on plans provided. Site measurements and field verifications are recommended to ensure accuracy. These quantities are not intended to be used for material ordering purposes. Since waste factors may vary by installer, actual ordering quantities are the responsibility of your flooring contractor.



## LEGEND

A



**PRODUCT:** Custom  
**ITEM:** C-11 C-1  
**COLOR/SAMPLE:**  
189121\_268458-055  
**SIZE:** 25 cm x 1 m  
**INSTALLED:** Ashlar  
*\*There are multiple tile variations within a box.*

B



**PRODUCT:** Custom  
**ITEM:** C-11 C-2  
**COLOR/SAMPLE:**  
189120\_268458-056  
**SIZE:** 25 cm x 1 m  
**INSTALLED:** Ashlar  
*\*There are multiple tile variations within a box.*

## CONFIDENT GUESTROOM PROTOTYPE ORDER INFORMATION

Carpet tiles **SAVE APPROXIMATELY 18%-20% IN PRODUCT WASTE** versus broadloom, based on prototype layout.

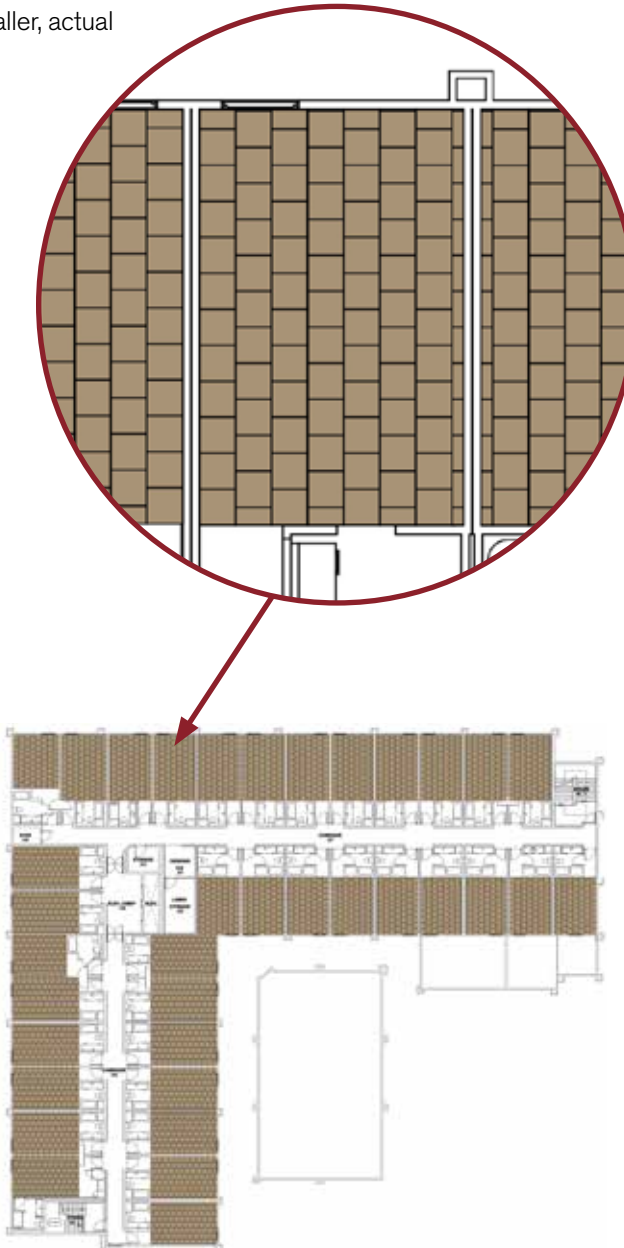


PRODUCT	ITEM#	COLOR#	SAMPLE#	SIZE	INSTALLATION
Main Line	C-01 C	189110	268458-052	50 cm x 50 cm	Brick

INSTALLATION SPECIFICATIONS	DESCRIPTION
XL2000 PLUS Adhesive	Double stick install

## CONFIDENT GUESTROOM INSTALLATION PLAN

All quantities are estimates only and are based on plans provided. Site measurements and field verifications are recommended to ensure accuracy. These quantities are not intended to be used for material ordering purposes. Since waste factors may vary by installer, actual ordering quantities are the responsibility of your flooring contractor.



### LEGEND



**PRODUCT:** Main Line  
**ITEM:** C-01 C  
**COLOR/SAMPLE:** 189110\_268458-052  
**SIZE:** 50 cm x 50 cm  
**INSTALLED:** Brick

## CONFIDENT MEETING ROOM PROTOTYPE ORDER INFORMATION

Carpet tiles **SAVE APPROXIMATELY 18%-20% IN PRODUCT WASTE** versus broadloom, based on prototype layout.

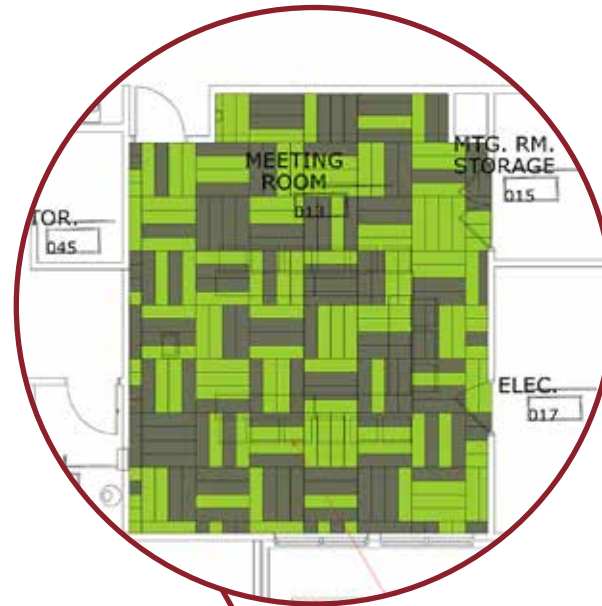


PRODUCT	ITEM#	COLOR#	SAMPLE#	SIZE	INSTALLATION
A Custom	C-12 C-1	268458-055	189121	25 cm x 1 m	Quarter Turn
B Custom	C-12 C-2	268458-056	189120	25 cm x 1 m	Quarter Turn

INSTALLATION SPECIFICATIONS	DESCRIPTION
XL2000 PLUS Adhesive	Double stick install

# CONFIDENT MEETING ROOM INSTALLATION PLAN

All quantities are estimates only and are based on plans provided. Site measurements and field verifications are recommended to ensure accuracy. These quantities are not intended to be used for material ordering purposes. Since waste factors may vary by installer, actual ordering quantities are the responsibility of your flooring contractor.



## LEGEND

A



**PRODUCT:** Custom  
**ITEM:** C-12 C-1  
**COLOR/SAMPLE:** 189121\_268458-055  
**SIZE:** 25 cm x 1 m  
**INSTALLED:** Quarter Turn  
*\*There are multiple tile variations within a box.*

B



**PRODUCT:** Custom  
**ITEM:** C-12 C-2  
**COLOR/SAMPLE:** 189120\_268458-056  
**SIZE:** 25 cm x 1 m  
**INSTALLED:** Quarter Turn  
*\*There are multiple tile variations within a box.*

## CONFIDENT OFFICE PROTOTYPE ORDER INFORMATION

Carpet tiles **SAVE APPROXIMATELY 18%-20% IN PRODUCT WASTE** versus broadloom, based on prototype layout.

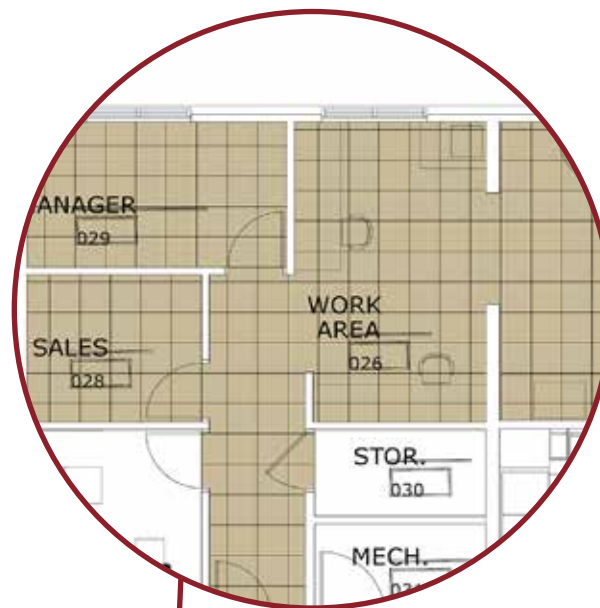


PRODUCT	ITEM#	COLOR#	SAMPLE#	SIZE	INSTALLATION
AE312	C-13 C	268431-039	189114	50 cm x 50 cm	Quarter Turn

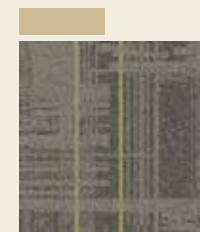
INSTALLATION SPECIFICATIONS	DESCRIPTION
XL2000 PLUS Adhesive	Double stick install

## CONFIDENT OFFICE INSTALLATION PLAN

All quantities are estimates only and are based on plans provided. Site measurements and field verifications are recommended to ensure accuracy. These quantities are not intended to be used for material ordering purposes. Since waste factors may vary by installer, actual ordering quantities are the responsibility of your flooring contractor.



## LEGEND



**PRODUCT:** AE312  
**ITEM:** C-13 C  
**COLOR/SAMPLE:** 189114\_268431-039  
**SIZE:** 50 cm x 50 cm  
**INSTALLED:** Quarter Turn

## CONFIDENT BREAKROOM PROTOTYPE ORDER INFORMATION

Carpet tiles **SAVE APPROXIMATELY 18%-20% IN PRODUCT WASTE** versus broadloom, based on prototype layout.

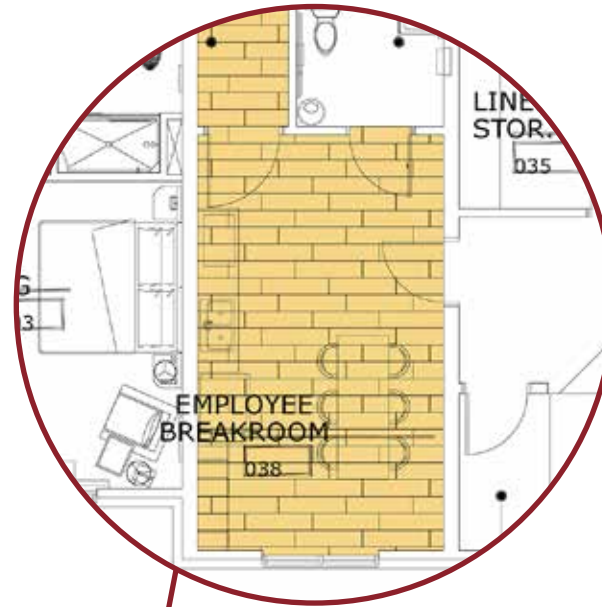


PRODUCT	ITEM#	COLOR#	SIZE	INSTALLATION
LVT Natural Woodgrains	LVT-15	A00204 Beech	25 cm x 1 m	Ashlar

INSTALLATION SPECIFICATIONS	DESCRIPTION
XL2000 PLUS Adhesive	Double stick install

## CONFIDENT BREAKROOM INSTALLATION PLAN

All quantities are estimates only and are based on plans provided. Site measurements and field verifications are recommended to ensure accuracy. These quantities are not intended to be used for material ordering purposes. Since waste factors may vary by installer, actual ordering quantities are the responsibility of your flooring contractor.



### LEGEND



**PRODUCT:** LVT Natural Woodgrains  
**ITEM:** LVT-15  
**COLOR:** A00204 Beech  
**SIZE:** 25 cm x 1 m  
**INSTALLED:** Ashlar