

Interface[®] Hospitality

CHOICE HOTELS

Approved Prototypes

Cambria Hotel & Suites
Comfort Inn
Comfort Suites
Mainstay Suites
Sleep Inn

Why **Interface® Hospitality**?

Interface Hospitality is a **Choice Hotels** approved supplier of carpet tile and LVT. We are currently approved on the following prototypes:

- Cambria Hotel & Suites
- Mainstay Suites
- Comfort Inn
- Sleep Inn
- Comfort Suites

1. **6-8 WEEK LEAD TIME** for anything not already in stock.
2. **NO ROLL SIZES OR WIDTHS** to deal with. We come in boxes!
3. What about **UNIT COST?** We can compare the real cost of tile vs. broadloom for each project and show you the true savings.
4. **15 YEAR WARRANTY.** Say no more.
5. **SELECTIVE REPLACEMENT** means little to no disruptions to hotel operations.
6. **INTERSEPT®** antimicrobial protection. Keepin' it clean.
7. **PROTEKT²** stain resistant technology. Keepin' it real clean!
8. Greater **EASE OF HANDLING**, less liability related to mis-cutting of broadloom.
9. Order and installation is a breeze with our **ESTIMATES, SEAMING DIAGRAMS, AND RENDERINGS.**
10. All of our yarns are **100% SOLUTION-DYED NYLON.**
11. **VARIOUS TILE SIZES** make it easier to design/define spaces and sub-spaces
12. Our **CARPET** and **LVT** work together in seamless integration, with no transition strips.
13. **TACTILES®** mean an easy, no glue installation!
14. We are **MORE SUSTAINABLE:** All of our products are **EPD** verified
15. Interface Hospitality's **REENTRY® RECLAMATION & RECYCLING** program results in our products having up to 80% recycled content, from returned/used carpet.
16. All Interface Hospitality carpet is climate neutral **COOL CARPET**, meaning no greenhouse gases!

Why **Interface® Hospitality**?

1. **Lead Time**

If not in stock, our lead times are 6-8 weeks and all products are manufactured in the USA. FOB Union City, Georgia.

2. **No Roll Sizes or Widths**

There are no widths and roll sizes to deal with, which can often lead to hidden costs and unused material.

3. **Unit Cost**

The unit cost is only part of the evaluation when comparing carpet tile to broadloom for your hotel. Waste is a big consideration with total project cost. We can develop project specific ROI's to compare total project cost for your individual property.

4. **15 Year Warranty**

All Interface Hospitality products are hard wearing, provide lasting protection against excessive surface wear, edge ravel, backing separation, shrinking, stretching, permanent soiling and staining.

5. **Selective Replacement**

Whether you're replacing a single guest room, a corridor, or an entire hotel, you can do so without disruption. Interface Hospitality's selective replacement enables old flooring to be replaced quickly and efficiently any day of the week, your carpet replacement costs can be cut by up to 50%.

6. **Intersept®**

Mold Protection no matter what's spilled on the floor, our proprietary antimicrobial preservative, Intersept®, protects our modular carpet against the growth of odor-causing bacteria guaranteed. With proper maintenance, Intersept treated carpet safely and effectively inhibits the growth of mold and other bacteria so your floors are always fresh. All Interface carpet is standard with Intersept.

7. **Protekt²**

Because stain resist technology - Protekt² - is built into Interface carpet tiles, a topical stain resist treatment is not necessary. The additional polymer is included when nylon is manufactured so it permanently increases stain resistance. We conducted stain tests on our products and compared them to products with a topical treatment. The results? Our uncoated fibers performed just as well as the treated ones. Additionally, the fluorinated chemicals traditionally used in stain resist treatments, when they do wash off, persist in the environment for thousands of years. With Protekt², you get permanent stain resistance, not permanent pollution.

8. **Ease of Handling**

Carpet tile offers greater ease of handling, and installers have less liability related to possible mis-cutting of broadloom.

9. **Installation**

Order and installation is a breeze with our estimates, seaming diagrams and renderings.

10. **100% Solution-dyed Nylon**

Vibrant color that does not fade. All Interface Hospitality carpet tiles are made from durable, stain resistant, 100% solution dyed nylon. Offering superior color fastness and a wide array of colors and textures, solution dyed nylon is less harmful to the environment, using no water or toxic chemicals in the manufacturing process.

11. **Various Sizes**

Using 50cm, 1m, 25cm x 1m and 50cm x 1m tiles allows for optimal pattern repeats, asymmetrical or symmetrical designs and color use. It also allows design to define spaces / nesting within larger areas.

12. **Integrated System**

Interface modular tiles span a wide selection of designs that offer pattern, color and texture options for a myriad of flooring needs. Tiles come in a variety of shape and size modules that work seamlessly and interchangeably with each other. This compatibility allows for holistic flooring solutions with expansive design flexibility.

13. **TacTiles®**

No Glue Installation. Installation or reconfiguration with our glue-free TacTiles installation system means there's no glue smell and no drying time. Guests can use the room as soon as the last piece is laid and all they'll notice is a beautiful floor. <https://goo.gl/syJN1B>

14. **Sustainable Choice**

Environmental Responsibility. Interface Hospitality was the industry's first to earn an EPD (Environmental Product Declaration), which evaluates consistent factors based on full lifecycle assessment (LCA). We now have published EPDs for 99% of our products globally. In addition, all of our products with GlasBac® and GlasBacRE backings meet NSF/ANSI 140 Sustainable Carpet Assessment Standard (SCAS) for carpet.

15. **Carpet Recycling Program: ReEntry®**

Recyclable is Now a Reality. Through our ReEntry program and partnerships with our fiber suppliers and recycling centers throughout North America, separated Type 6 and 6,6 nylon are recycled into new 6 and 6,6 nylon, while separated GlasBac® and similar competitor backings are recycled into GlasBac®RE non-virgin PVC backing using our Cool Blue™ technology. The result? Products with up to 80% total recycled content, including as much as 35% post-consumer content.

16. **Cool Carpet™**

Our third party verified carbon offset program zeroes out all greenhouse gas (GHG) emissions associated with the entire lifecycle of your carpet. An independent testing program that identifies carpet and adhesives with very low emissions of VOCs to help improve indoor air quality.

17. **Dimensional Stability**

Interface GlasBac® backing has been tested and proven in the marketplace for over 30 years. Engineered to provide superior dimensional stability, GlasBac® modular carpet tiles will not stretch or shrink when exposed to heat or cold, heavy foot or rolling traffic.

18. **Sound Absorption**

Quite space is essential when people need to focus and concentrate. Sound absorption is therefore critical when colleagues need to collaborate without becoming a distraction to their neighbors. Interface Hospitality carpets provide high sound absorption and insulation.

Corridor Prototype Order Information

CONTACT: Sofia Davila sofia.davila@interface.com | 347.633.0577 or your local Account Executive



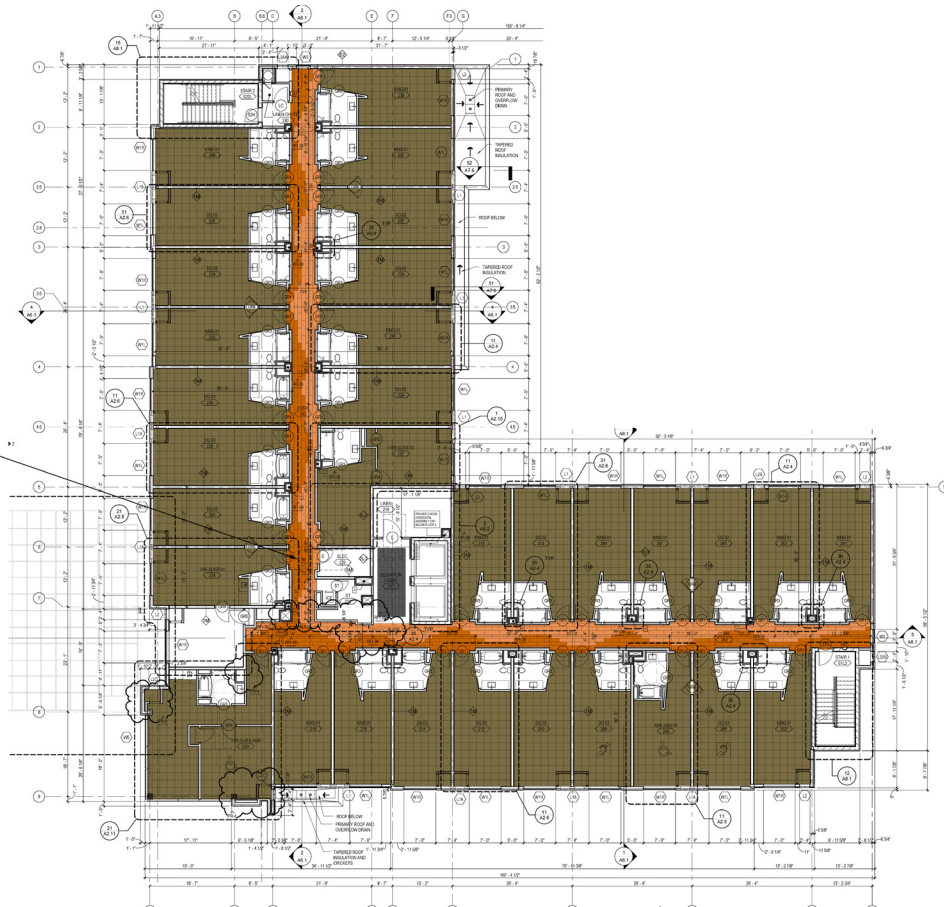
Carpet tiles save approximately 18%-20% in product waste verses broadloom, based on prototype layout.

Corridor Product	Spec #	Sample #	Color #	Size	Installation
CT112 A	CP-01	264954-005		25cm x 1m	Ashlar
CT112 B	CP-02	261352-023	185076	25cm x 1m	Ashlar
Viva Colores	CB-01		101173 Pardo	4" Carpet Base	
Installation Specifications		Description			
Tac Tiles for Installation (500 TacTiles/Roll)		60sq yds/Roll Adhesive			
Pad / Underlayment (Optional-Not Required)		CushionBac Renew			
2000 Plus		Adhesive to be used with pad			

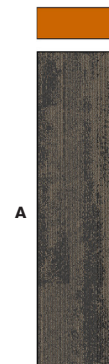
CORRIDOR INSTALLATION PLAN

Interface Hospitality

All quantities are estimates only and are based on plans provided. Site measurements and field verifications are recommended to ensure accuracy. These quantities are not intended to be used for material ordering purposes. Since waste factors may vary by installer, actual ordering quantities are the responsibility of your flooring contractor



LEGEND



PRODUCT: CT112
COLOR: 185075
SIZE: 25cm x 1m
INSTALLED: ASHLAR



PRODUCT: CT112
COLOR:
SIZE: 25cm x 1m
INSTALLED: ASHLAR

Guest Room Prototype Order Information

CONTACT: Sofia Davila sofia.davila@interface.com | 347.633.0577 or your local Account Executive



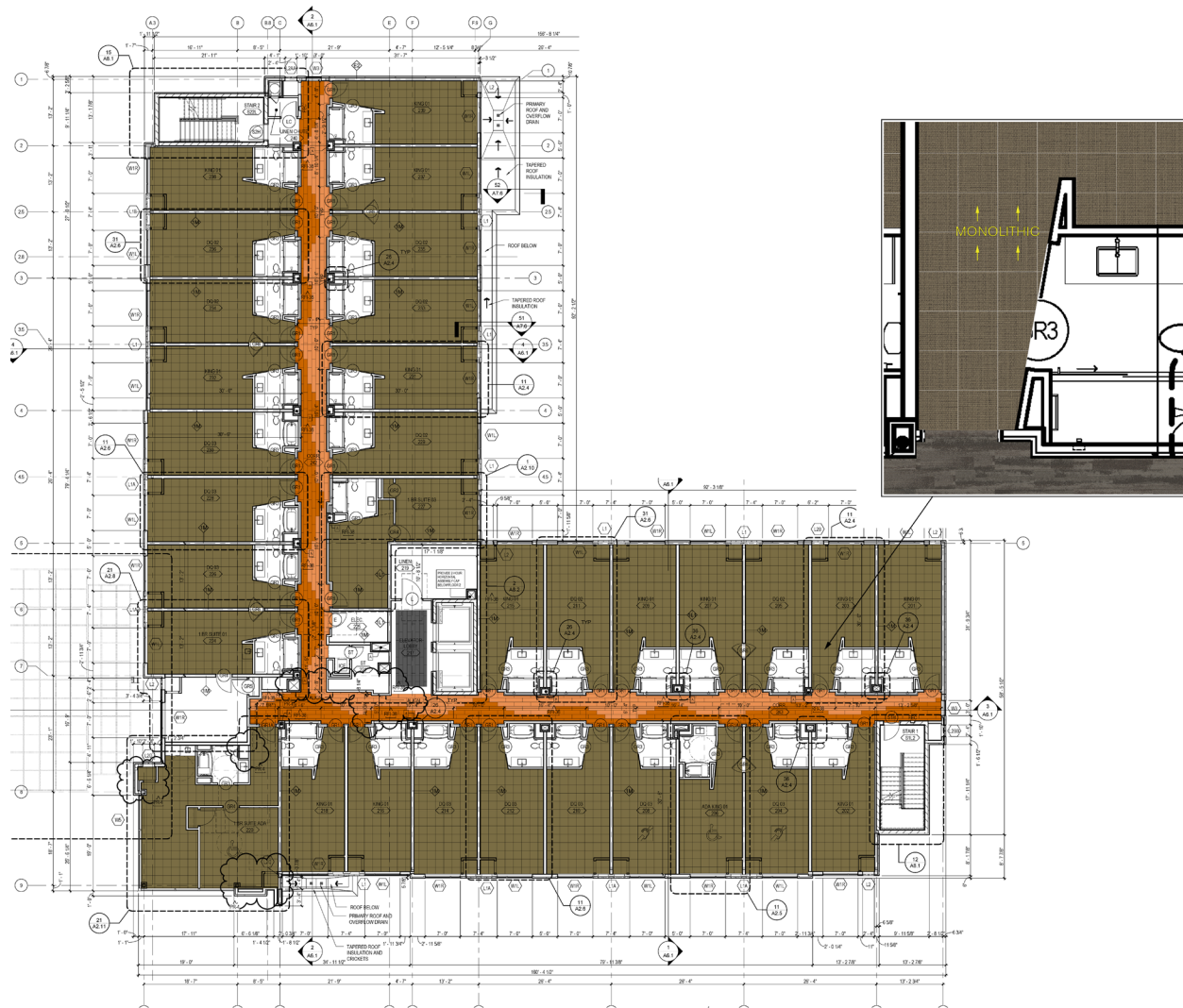
Guest Room Product	Spec #	Color #	Size	Installation
RMS607 A	CP-08	103574 Khaki	50cm x 50cm	Monolithic
Viva Colores		101168 Avellana	4" Carpet Base	

Installation Specifications	Description
Tac Tiles for Installation (500 TacTiles/Roll)	60sq yds/Roll Adhesive
Pad / Underlayment (Optional-Not Required)	CushionBac Renew
2000 Plus	Adhesive to be used with pad

GUEST ROOM INSTALLATION PLAN

Interface Hospitality

All quantities are estimates only and are based on plans provided. Site measurements and field verifications are recommended to ensure accuracy. These quantities are not intended to be used for material ordering purposes. Since waste factors may vary by installer, actual ordering quantities are the responsibility of your flooring contractor



LEGEND

A



PRODUCT: RMS607
COLOR: 103574 KHAKI
SIZE: 50cm
INSTALLED: MONOLITHIC

Lobby Prototype Order Information

CONTACT: Sofia Davila sofia.davila@interface.com | 347.633.0577 or your local Account Executive



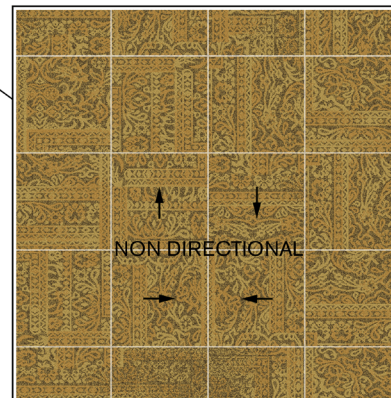
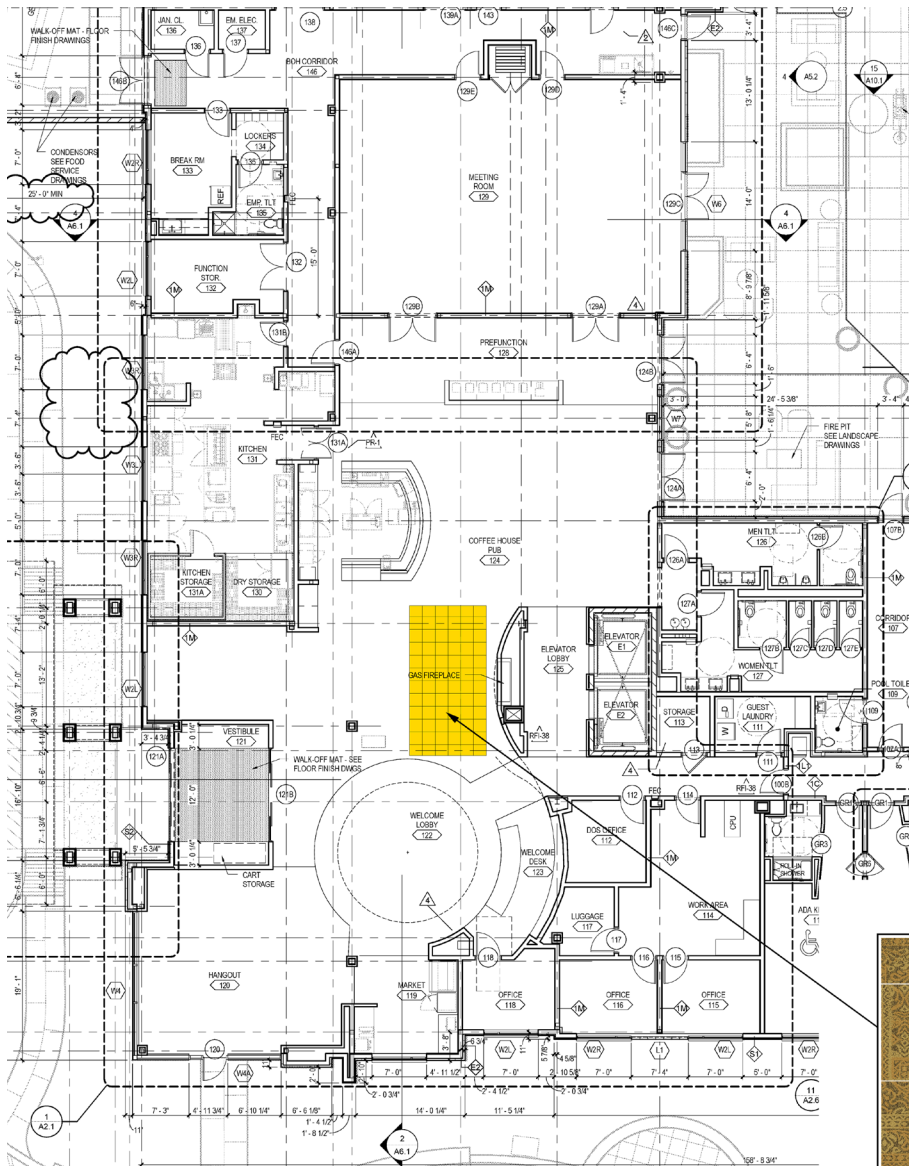
Lobby Product	Spec #	Sample #	Kit#	Color #	Size	Installation
Chenille Charade A	CP-06	261352-029	98.1110.06	185455	50cm x 50cm	Non Directional

Installation Specifications	Description
Tac Tiles for Installation (500 TacTiles/Roll)	60sq yds/Roll Adhesive

LOBBY INSTALLATION PLAN

Interface Hospitality

All quantities are estimates only and are based on plans provided. Site measurements and field verifications are recommended to ensure accuracy. These quantities are not intended to be used for material ordering purposes. Since waste factors may vary by installer, actual ordering quantities are the responsibility of your flooring contractor



LEGEND

A

PRODUCT: CHENILLE CHARADE
 COLOR: 185455
 SIZE: 50cm
 INSTALLED: NON DIRECTIONAL

Elevator Lobby Prototype Order Information

CONTACT: Sofia Davila sofia.davila@interface.com | 347.633.0577 or your local Account Executive



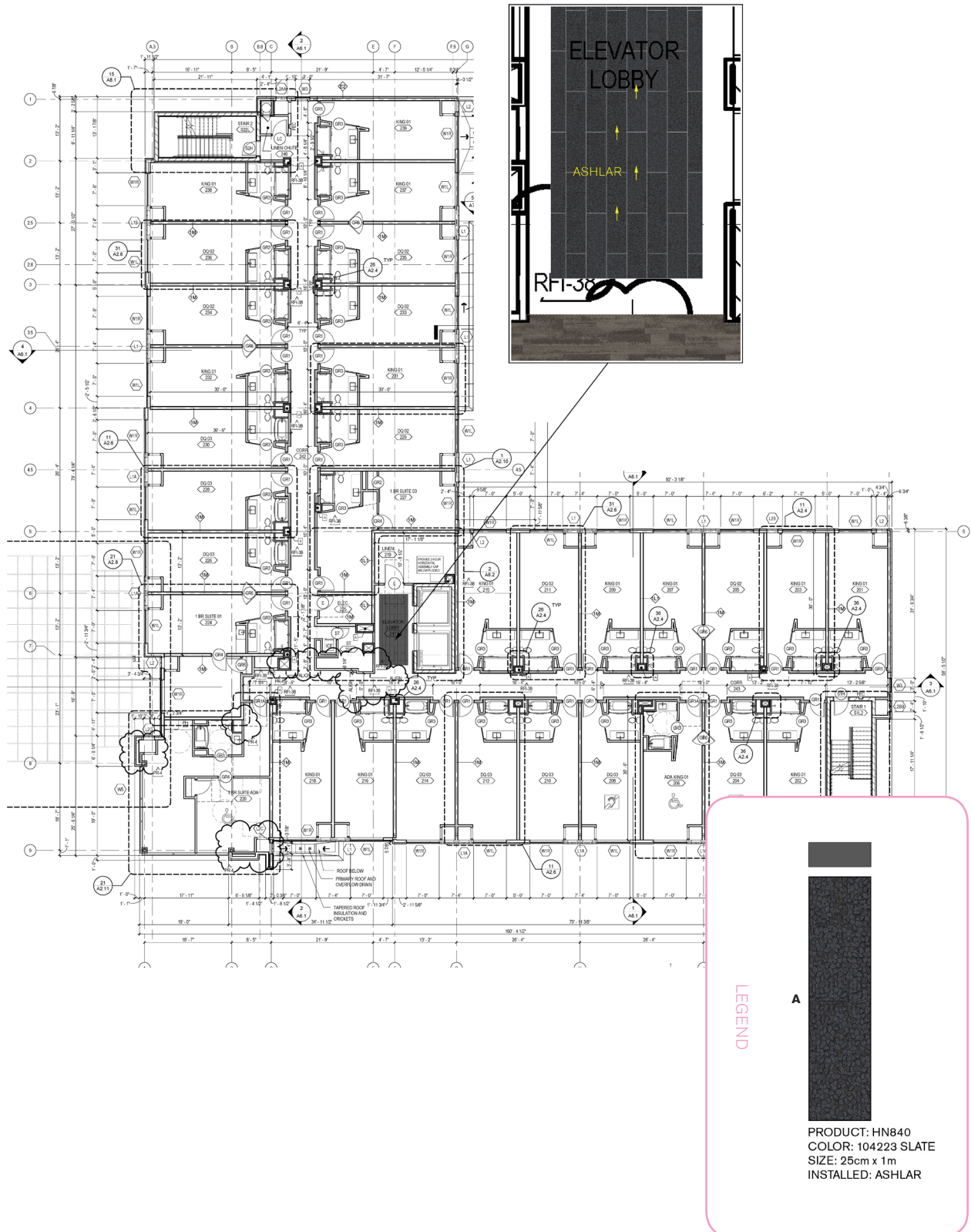
Elevator Lobby Product	Spec #	Color #	Size	Installation
HN840 A	CP-03	104223 Slate	25cm x 1m	Ashlar

Installation Specifications	Description
Tac Tiles for Installation (500 TacTiles/Roll)	60sq yds/Roll Adhesive
Pad / Underlayment (Optional-Not Required)	CushionBac Renew
2000 Plus	Adhesive to be used with pad

ELEVATOR LOBBY INSTALLATION PLAN

Interface Hospitality

All quantities are estimates only and are based on plans provided. Site measurements and field verifications are recommended to ensure accuracy. These quantities are not intended to be used for material ordering purposes. Since waste factors may vary by installer, actual ordering quantities are the responsibility of your flooring contractor



Public Space Prototype Order Information

CONTACT: Sofia Davila sofia.davila@interface.com | 347.633.0577 or your local Account Executive



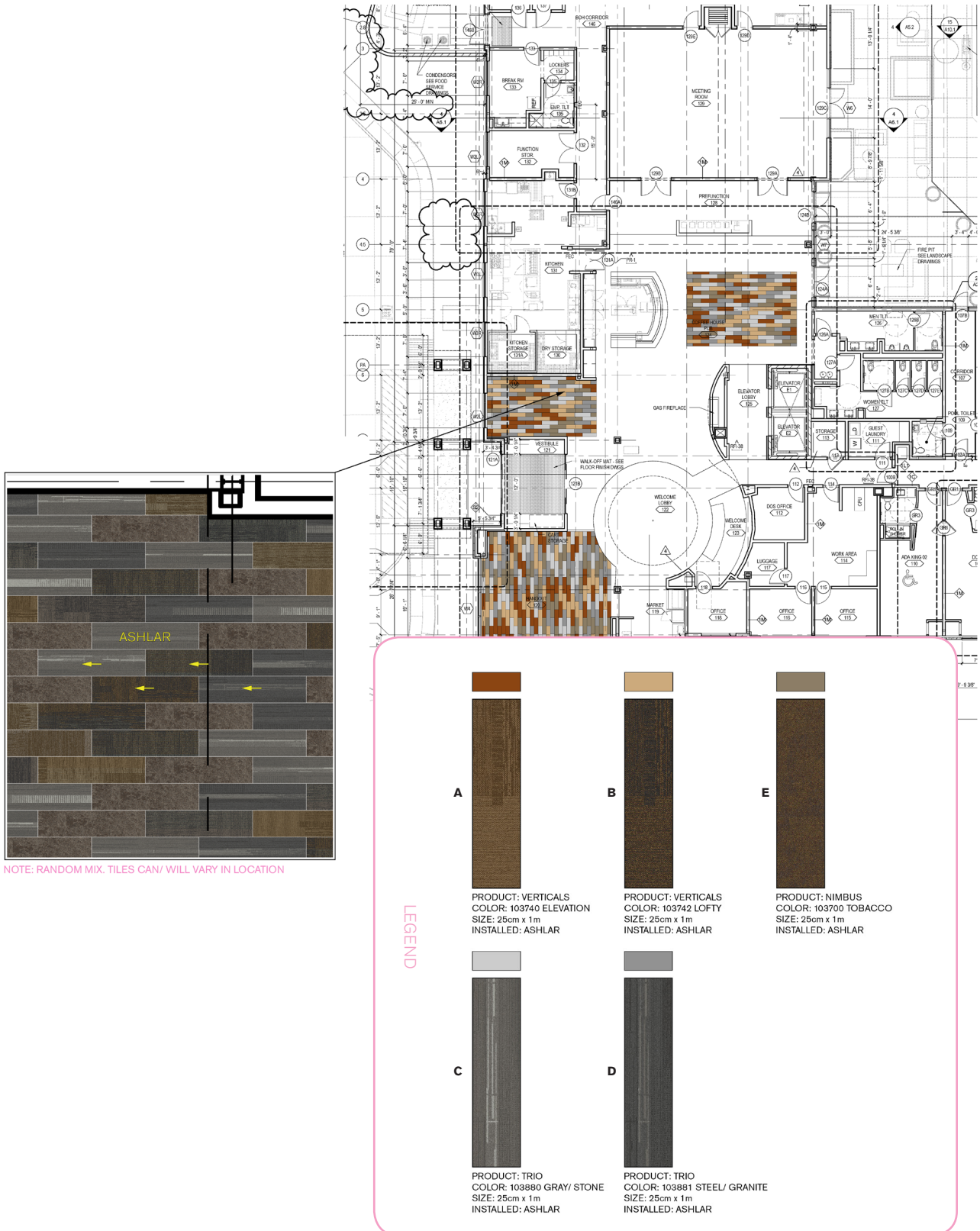
Public Space Product	Spec #	Color #	Size	Installation
Verticals A	CP-04	103740 Elevation	25cm x 1m	Ashlar
Verticals B	CP-04	103742 Lofty	25cm x 1m	Ashlar
Trio C	CP-04	103880 Gray/Stone	25cm x 1m	Ashlar
Trio D	CP-04	103881 Steel/Granite	25cm x 1m	Ashlar
Nimbus E	CP-04	103700 Tobacco	25cm x 1m	Ashlar

Installation Specifications	Description
Tac Tiles for Installation (500 TacTiles/Roll)	60sq yds/Roll Adhesive
Pad / Underlayment (Optional-Not Required)	CushionBac Renew
2000 Plus	Adhesive to be used with pad

PUBLIC SPACE INSTALLATION PLAN

Interface Hospitality

All quantities are estimates only and are based on plans provided. Site measurements and field verifications are recommended to ensure accuracy. These quantities are not intended to be used for material ordering purposes. Since waste factors may vary by installer, actual ordering quantities are the responsibility of your flooring contractor



Public Space Prototype Order Information

CONTACT: Sofia Davila sofia.davila@interface.com | 347.633.0577 or your local Account Executive



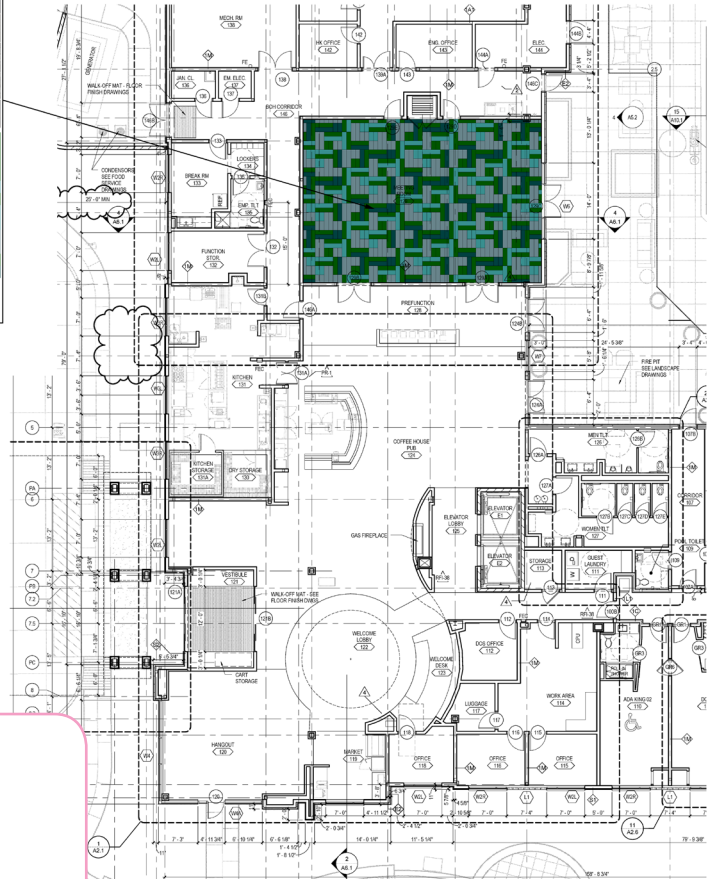
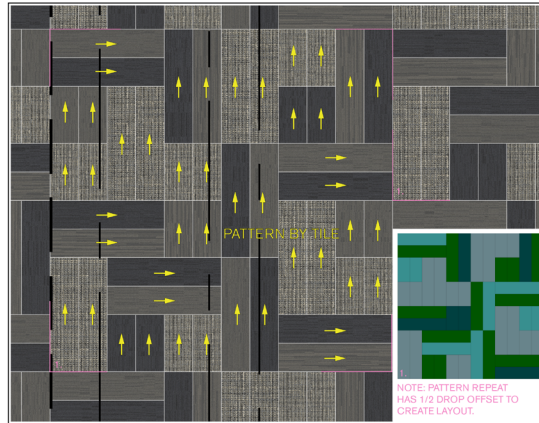
Public Space Products	Spec #	Color #	Size	Installation
WW895 A	CP-07	105378 Moorland Weave	25cm x 1m	Pattern by Tile
B701 B	CP-07	102893 Caspian	25cm x 1m	Pattern by Tile
B702 C	CP-07	102901 Caspian	25cm x 1m	Pattern by Tile
B702 D	CP-07	102896 Black Sea	25cm x 1m	Pattern by Tile
Viva Colores	CB-02	101178 Carbon	4" Carpet Base	

Installation Specifications	Description
Tac Tiles for Installation (500 TacTiles/Roll)	60sq yds/Roll Adhesive
Pad / Underlayment (Optional-Not Required)	CushionBac Renew
2000 Plus	Adhesive to be used with pad


PUBLIC SPACE INSTALLATION PLAN

Interface Hospitality

All quantities are estimates only and are based on plans provided. Site measurements and field verifications are recommended to ensure accuracy. These quantities are not intended to be used for material ordering purposes. Since waste factors may vary by installer, actual ordering quantities are the responsibility of your flooring contractor




LEGEND




A

PRODUCT: WW895
COLOR: 105378 MOORLAND WEAVE
SIZE: 25cm x 1m
INSTALLED: PATTERN BY TILE




B

PRODUCT: B701
COLOR: 102893 CASPIAN
SIZE: 25cm x 1m
INSTALLED: PATTERN BY TILE



C

PRODUCT: B702
COLOR: 102896 BLACK SEA
SIZE: 25cm x 1m
INSTALLED: PATTERN BY TILE

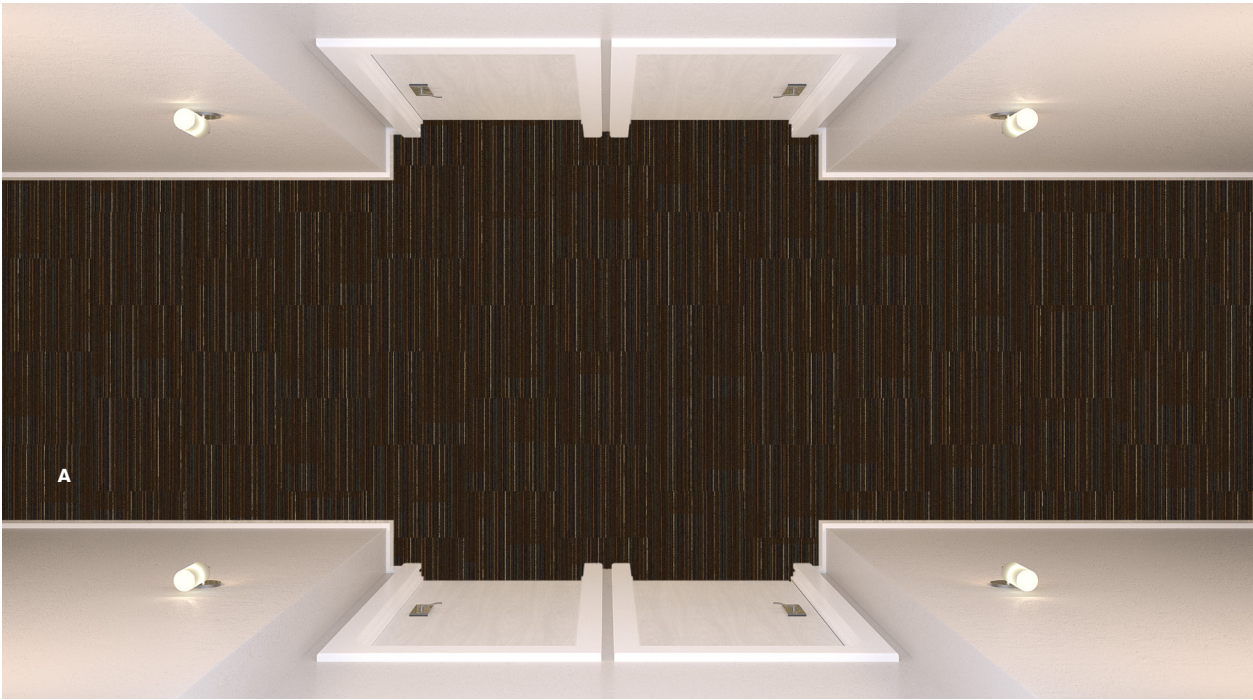


D

PRODUCT: B702
COLOR: 102901 CASPIAN
SIZE: 25cm x 1m
INSTALLED: PATTERN BY TILE

Truly Yours Corridor Prototype Order Information

CONTACT: Sofia Davila sofia.davila@interface.com | 347.633.0577 or your local Account Executive

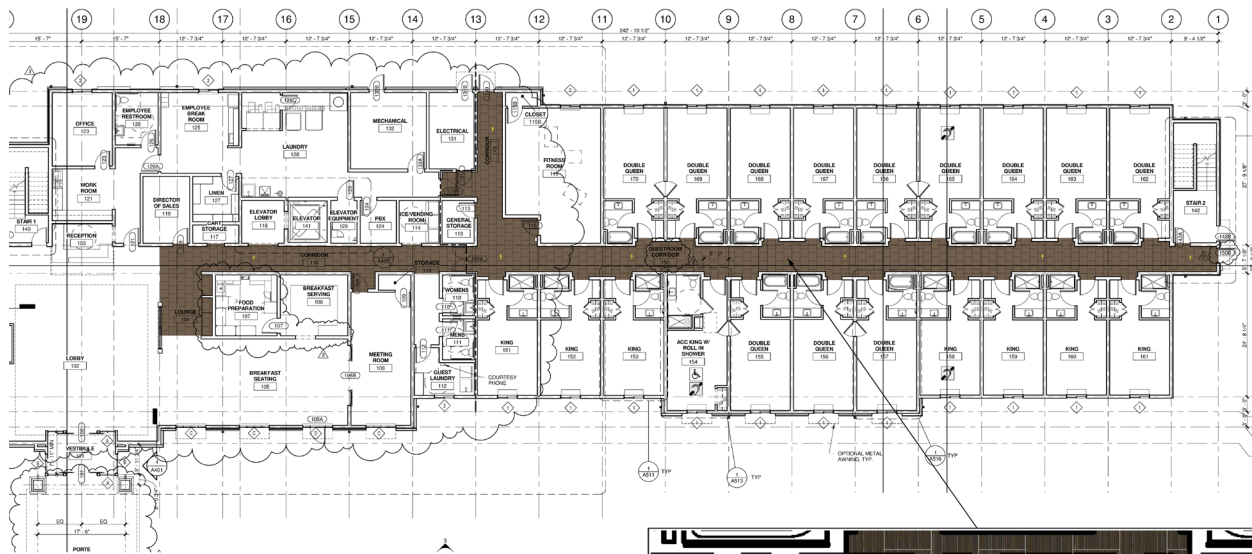


Corridor Product	Spec #	Color #	Size	Installation
LinearMix A	CPT-003 (Tile)	103774 Barkline	50cm x 50cm	Ashlar
Installation Specifications		Description		
Tac Tiles for Installation (500 TacTiles/Roll)		60sq yds/Roll Adhesive		
Pad / Underlayment (Optional-Not Required)		CushionBac Renew		
2000 Plus		Adhesive to be used with pad		

CORRIDOR INSTALLATION PLAN

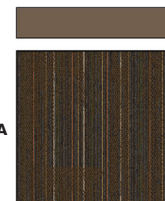
Interface Hospitality

All quantities are estimates only and are based on plans provided. Site measurements and field verifications are recommended to ensure accuracy. These quantities are not intended to be used for material ordering purposes. Since waste factors may vary by installer, actual ordering quantities are the responsibility of your flooring contractor



LEGEND

A



PRODUCT: LINEARMIX
COLOR: 103774 BARKLINE
SIZE: 50cm
INSTALLED: ASHLAR

Truly Yours Guest Room Prototype Order Information

CONTACT: Sofia Davila sofia.davila@interface.com | 347.633.0577 or your local Account Executive



Guest Room Product	Spec #	Sample #	Color #	Size	Installation
RMS101 A	CPT-001 (Tile) & CPT-004 (Tile)	260501-015	183954	50cm x 50cm	Brick
Monochrome	CPTB-001 (Tile)		101808 Briar	4" Cove Base	

Installation Specifications	Description
Tac Tiles for Installation (500 TacTiles/Roll)	60sq yds/Roll Adhesive
Pad / Underlayment (Optional- Not Required)	CushionBac Renew
2000 Plus	Adhesive to be used with pad

** RMS101 can only be used in the Exercise Room (Comfort Inn Only) and the Back of House (CPT-004 Tile) if additional guest rooms are being ordered at the same time to meet minimum requirement.*

GUEST ROOM INSTALLATION PLAN

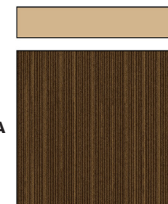
Interface Hospitality

All quantities are estimates only and are based on plans provided. Site measurements and field verifications are recommended to ensure accuracy. These quantities are not intended to be used for material ordering purposes. Since waste factors may vary by installer, actual ordering quantities are the responsibility of your flooring contractor



LEGEND

A



PRODUCT: CUSTOM
COLOR: 183954
SIZE: 50cm
INSTALLED: BRICK

Truly Yours Lobby Prototype Order Information

CONTACT: Sofia Davila sofia.davila@interface.com | 347.633.0577 or your local Account Executive

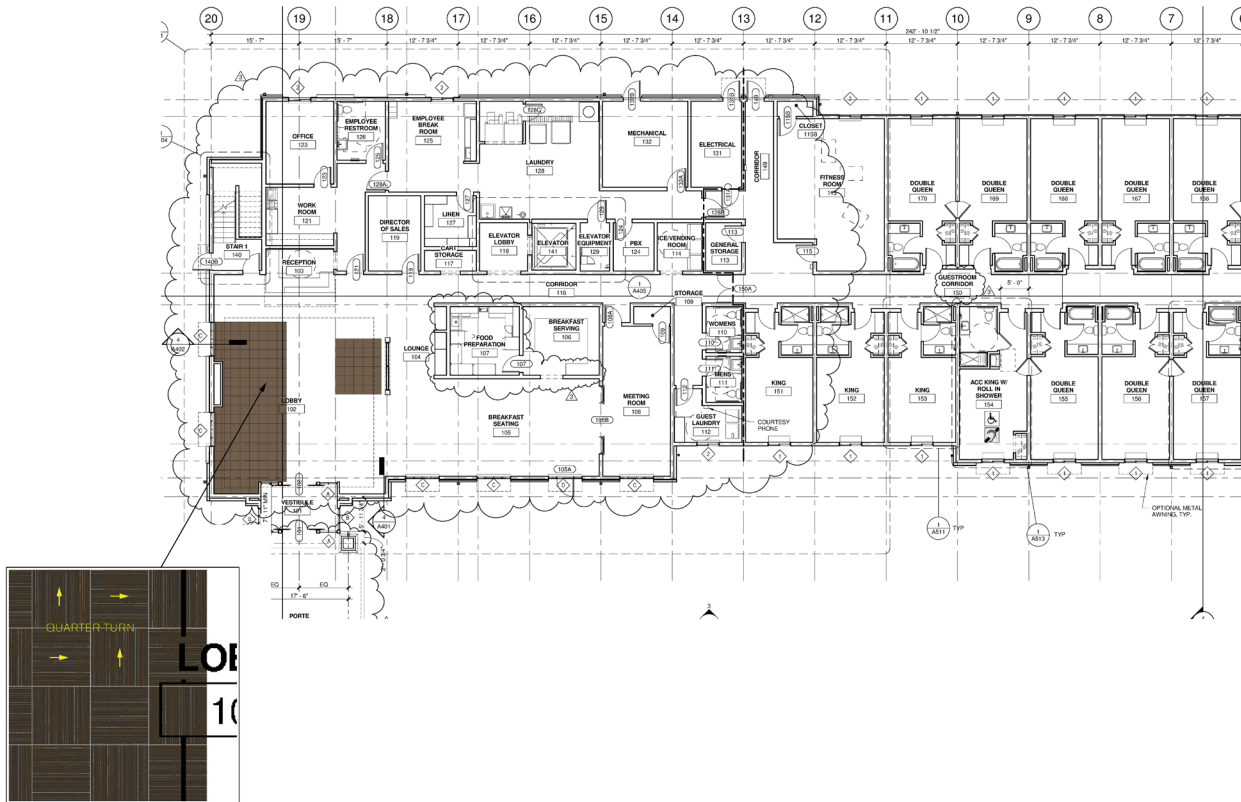


Lobby Products	Spec #	Sample #	Color #	Size	Installation
LinearMix A	CPT-003 (Tile)	103774		50cm x 50cm	Quarter Turn
Installation Specifications		Description			
Tac Tiles for Installation (500 TacTiles/Roll)		60sq yds/Roll Adhesive			
Pad / Underlayment (Optional-Not Required)		CushionBac Renew			
2000 Plus		Adhesive to be used with pad			

LOBBY INSTALLATION PLAN

Interface Hospitality

All quantities are estimates only and are based on plans provided. Site measurements and field verifications are recommended to ensure accuracy. These quantities are not intended to be used for material ordering purposes. Since waste factors may vary by installer, actual ordering quantities are the responsibility of your flooring contractor



LEGEND

A



PRODUCT: LINEARMIX
COLOR: 103774 BARKLINE
SIZE: 50cm
INSTALLED: QUARTER TURN

Truly Yours Meeting Room and Elevator Lobby Prototype Order Information

CONTACT: Sofia Davila sofia.davila@interface.com | 347.633.0577 or your local Account Executive



Meteing Room and Elevator Lobby Products	Spec #	Sample #	Color #	Size	Installation
Cartera MO577 A	CPT-002 (Tile)	260501-021	184792	50cm x 50cm	Brick
Installation Specifications		Description			
Tac Tiles for Installation (500 TacTiles/Roll)		60sq yds/Roll Adhesive			
Pad / Underlayment (Optional-Not Required)		CushionBac Renew			
2000 Plus		Adhesive to be used with pad			

* 100 yard minimum requirement to order this product. Order can be combined with other areas to meet minimum requirement.

Interface® Hospitality

[illegible]

Guest Room Prototype Order Information

CONTACT: Sofia Davila sofia.davila@interface.com | 347.633.0577 or your local Account Executive

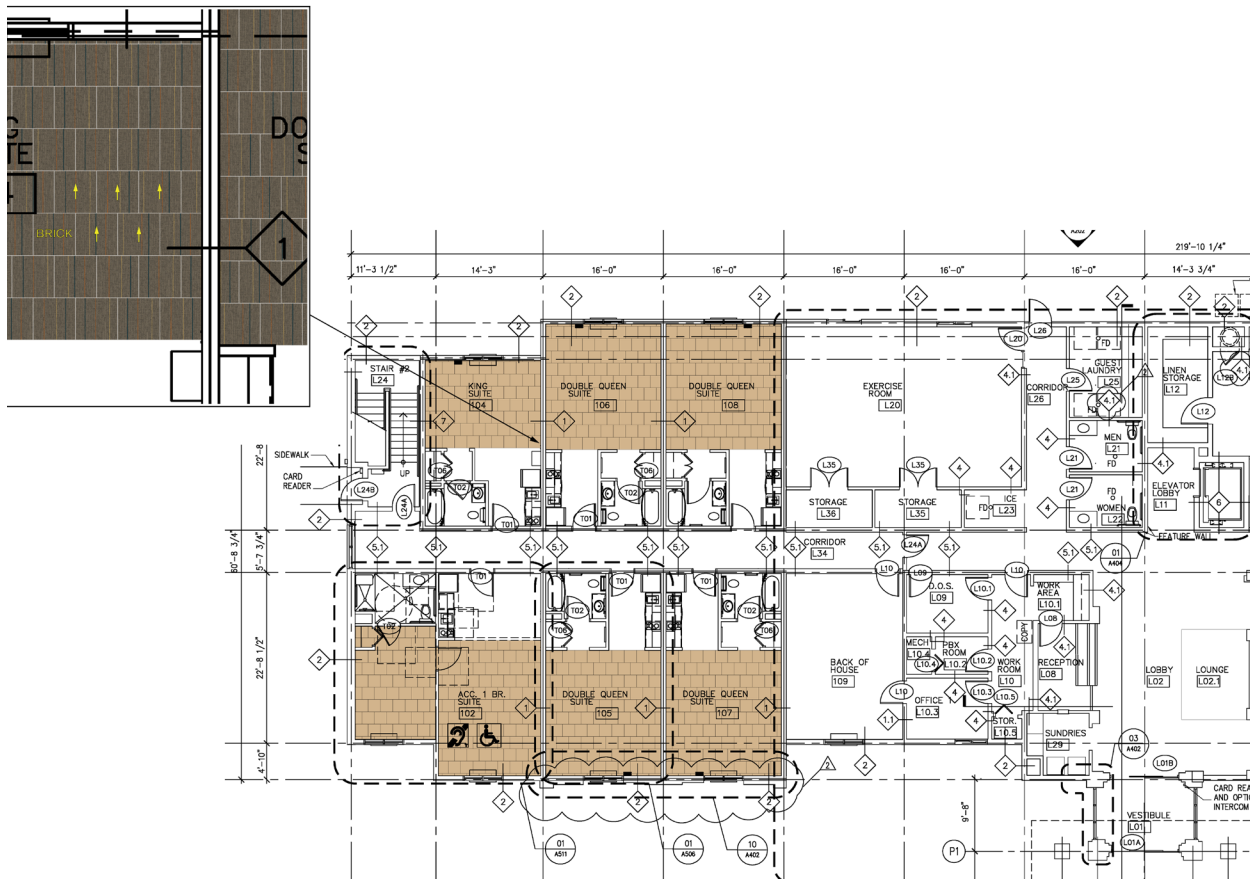


Guest Room Product	Spec #	Sample #	Color #	Size	Installation
Custom A	CPT-001	265709-042	187107	50cm x 50cm	Brick
Installation Specifications	Description				
Tac Tiles for Installation (500 TacTiles/Roll)		60sq yds/Roll Adhesive			
Pad / Underlayment (Optional-Not Required)		CushionBac Renew			
2000 Plus		Adhesive to be used with pad			

GUEST ROOM INSTALLATION PLAN

Interface Hospitality

All quantities are estimates only and are based on plans provided. Site measurements and field verifications are recommended to ensure accuracy. These quantities are not intended to be used for material ordering purposes. Since waste factors may vary by installer, actual ordering quantities are the responsibility of your flooring contractor



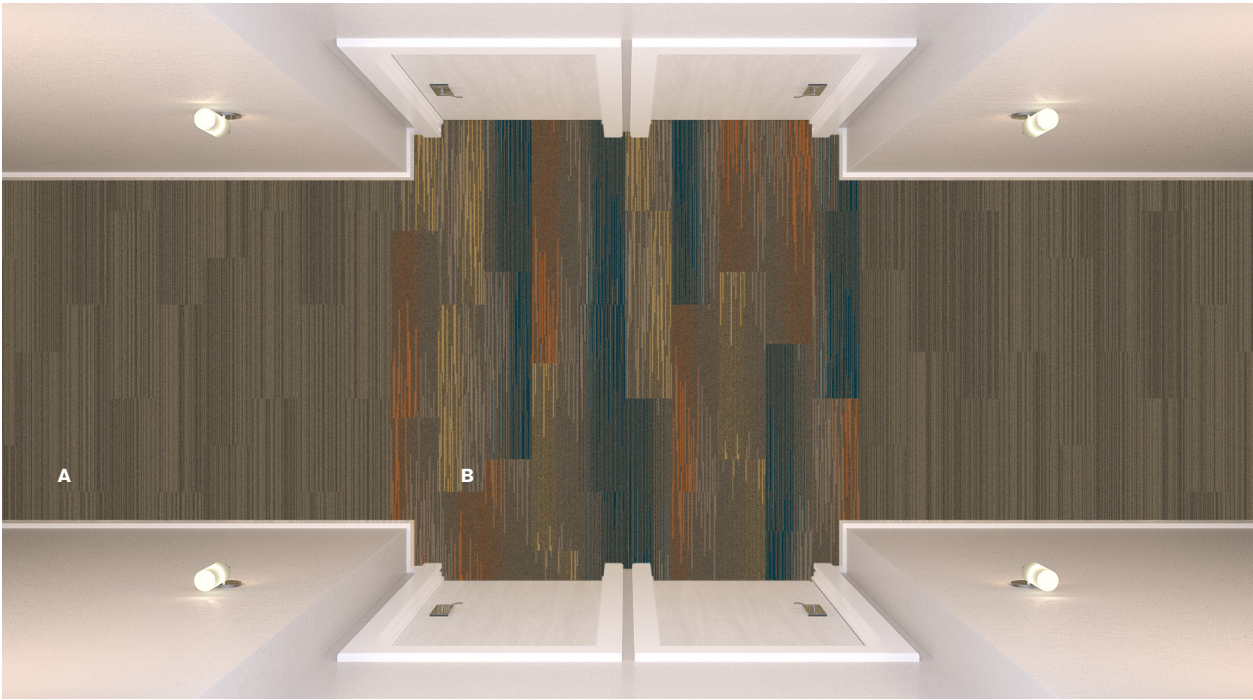
LEGEND

A

PRODUCT: CUSTOM
COLOR: 187107
SIZE: 50cm
INSTALLED: BRICK

Corridor Prototype Order Information

CONTACT: Sofia Davila sofia.davila@interface.com | 347.633.0577 or your local Account Executive



Corridor Product	Spec #	Sample #	Color #	Size	Installation
SL910 A	CPT-001 (Tile)-MS)	265709-052	*	25cm x 1m	Ashlar
SL930 B	CPT-001 (Tile)-MS)	265709-047	*	25cm x 1m	Ashlar

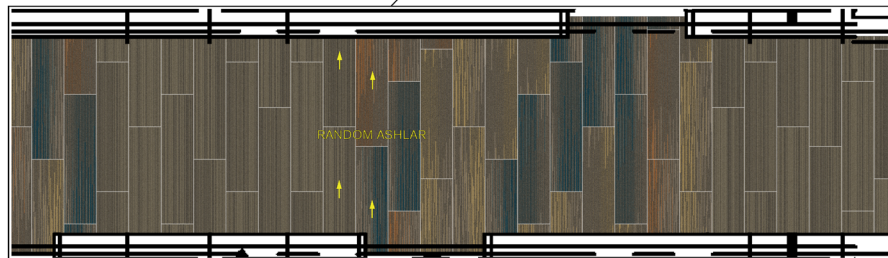
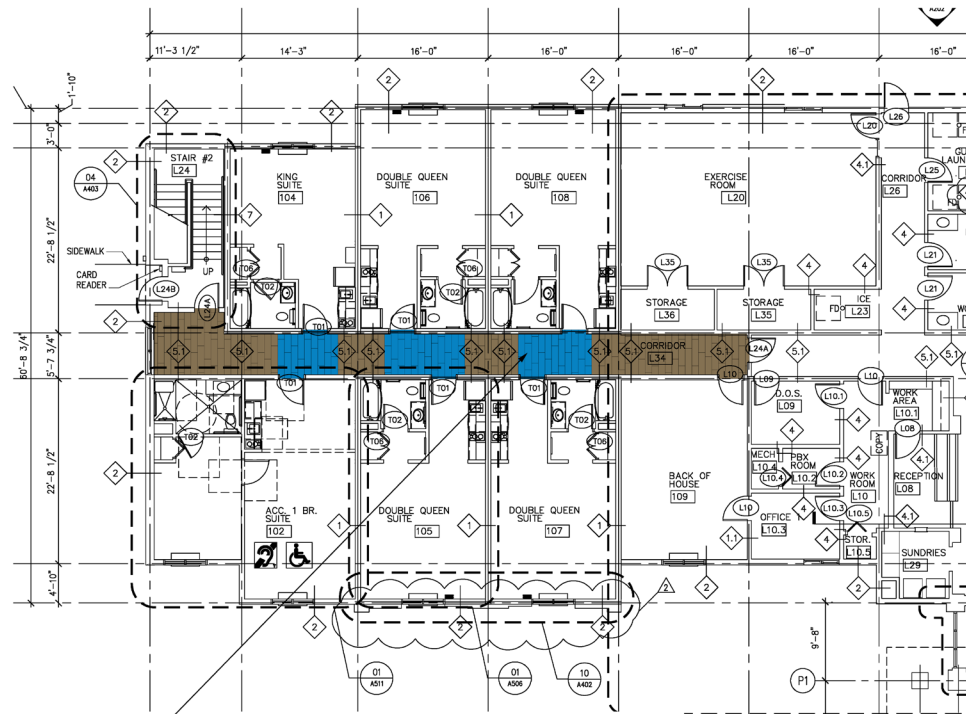
Installation Specifications	Description
Tac Tiles for Installation (500 TacTiles/Roll)	60sq yds/Roll Adhesive
Pad / Underlayment (Optional-Not Required)	CushionBac Renew
2000 Plus	Adhesive to be used with pad

**Account Executives: order samples through Custom Development using sample #. Not available through the sample center.*

CORRIDOR INSTALLATION PLAN

Interface Hospitality

All quantities are estimates only and are based on plans provided. Site measurements and field verifications are recommended to ensure accuracy. These quantities are not intended to be used for material ordering purposes. Since waste factors may vary by installer, actual ordering quantities are the responsibility of your flooring contractor



LEGEND

A



PRODUCT: SL910
COLOR: 265709-052
SIZE: 25cm x 1m
INSTALLED:
RANDOM ASHLAR

B



PRODUCT: SL930
COLOR: 265709-047
SIZE: 25cm x 1m
INSTALLED:
RANDOM ASHLAR

Lobby Prototype Order Information

CONTACT: Sofia Davila sofia.davila@interface.com | 347.633.0577 or your local Account Executive



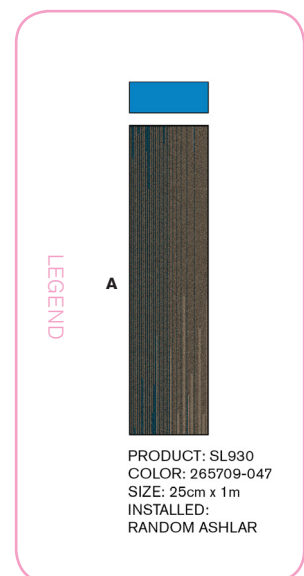
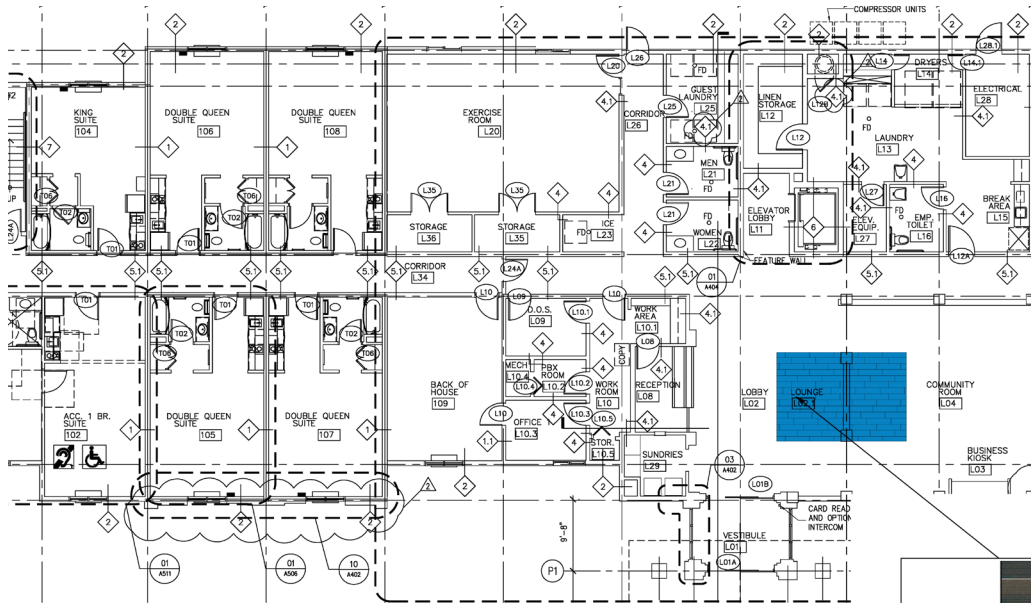
Lobby Product	Spec #	Sample #	Color #	Size	Installation
SL930 B	CPT-001 (Tile)-MS)	265709-047	*	25cm x 1m	Random Ashlar
Installation Specifications		Description			
Tac Tiles for Installation (500 TacTiles/Roll)		60sq yds/Roll Adhesive			
Pad / Underlayment (Optional- Not Required)		CushionBac Renew			
2000 Plus		Adhesive to be used with pad			

*Account Executives: order samples through Custom Development using sample #. Not available through the sample center.

LOBBY INSTALLATION PLAN

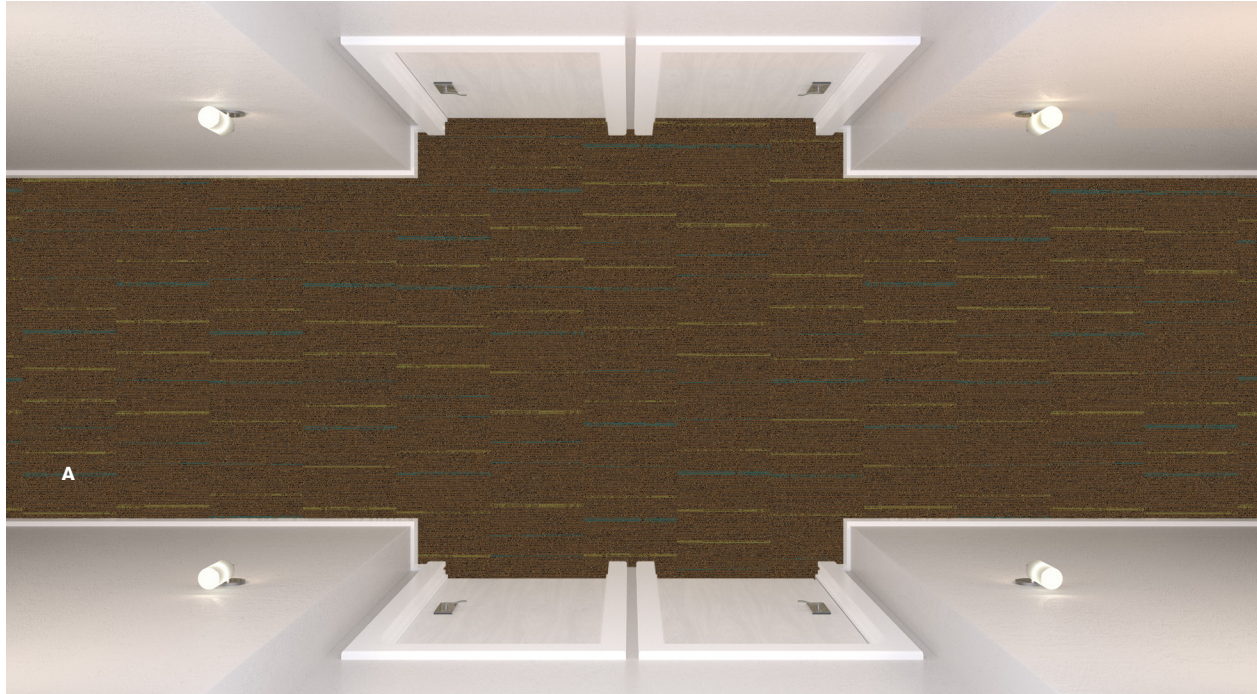
Interface Hospitality

All quantities are estimates only and are based on plans provided. Site measurements and field verifications are recommended to ensure accuracy. These quantities are not intended to be used for material ordering purposes. Since waste factors may vary by installer, actual ordering quantities are the responsibility of your flooring contractor



Designed To Dream Corridor Prototype Order Information

CONTACT: Sofia Davila sofia.davila@interface.com | 347.633.0577 or your local Account Executive



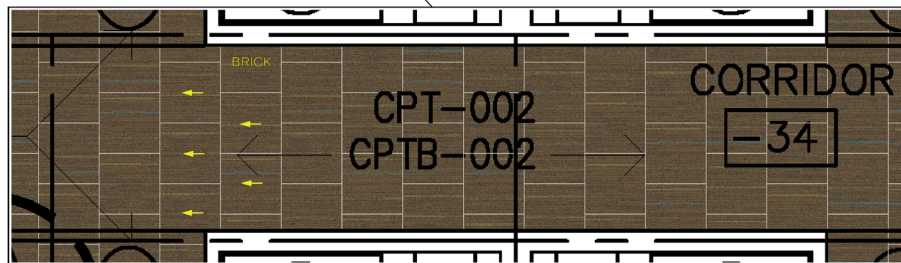
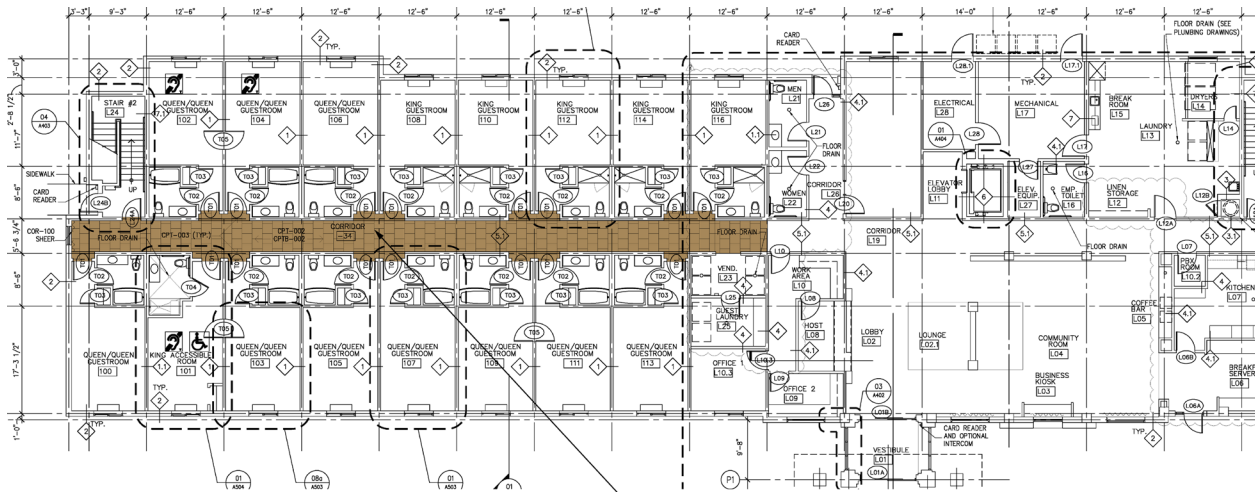
Corridor Product	Spec #	Color #	Size	Installation
Sidetrack A	CPT-002 (Tile)	104267 Aztex/Track	50cm x 50cm	Brick
Viva Colores	CPTB-002	101117 Marron	4" cove base	

Installation Specifications	Description
Tac Tiles for Installation (500 TacTiles/Roll)	60sq yds/Roll Adhesive
Pad / Underlayment (Optional-Not Required)	CushionBac Renew
2000 Plus	Adhesive to be used with pad

CORRIDOR INSTALLATION PLAN

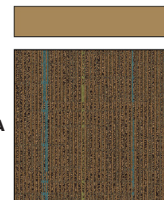
Interface Hospitality

All quantities are estimates only and are based on plans provided. Site measurements and field verifications are recommended to ensure accuracy. These quantities are not intended to be used for material ordering purposes. Since waste factors may vary by installer, actual ordering quantities are the responsibility of your flooring contractor



LEGEND

A



PRODUCT: SIDETRACK
COLOR: 104267 AZTEC/ TRACK
SIZE: 50cm
INSTALLED: BRICK

Designed To Dream Guest Room Prototype Order Information

CONTACT: Sofia Davila sofia.davila@interface.com | 347.633.0577 or your local Account Executive



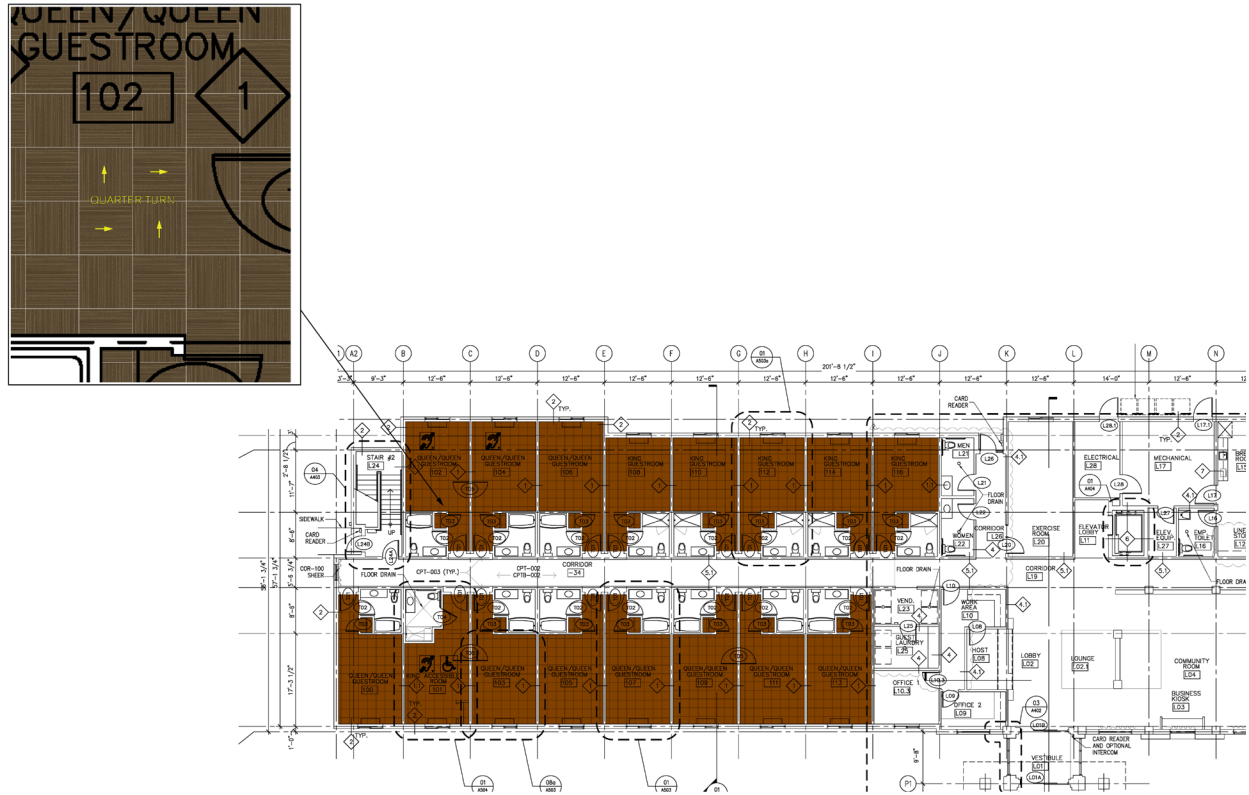
Guest Room Product	Spec #	Sample #	Color #	Size	Installation
RMS101 A	CPT-001	260502-015	183953	50cm x 50cm	Quarter Turn
Monochrome	CPTB-001	101801 Mouse		4" cove base	

Installation Specifications	Description
Tac Tiles for Installation (500 TacTiles/Roll)	60sq yds/Roll Adhesive
Pad / Underlayment (Optional-Not Required)	CushionBac Renew
2000 Plus	Adhesive to be used with pad

GUEST ROOM INSTALLATION PLAN

Interface Hospitality

All quantities are estimates only and are based on plans provided. Site measurements and field verifications are recommended to ensure accuracy. These quantities are not intended to be used for material ordering purposes. Since waste factors may vary by installer, actual ordering quantities are the responsibility of your flooring contractor



LEGEND

A



PRODUCT: CUSTOM
COLOR: 183953
SIZE: 50cm
INSTALLED: QUARTER TURN

Designed To Dream Lobby Prototype Order Information

CONTACT: Sofia Davila sofia.davila@interface.com | 347.633.0577 or your local Account Executive



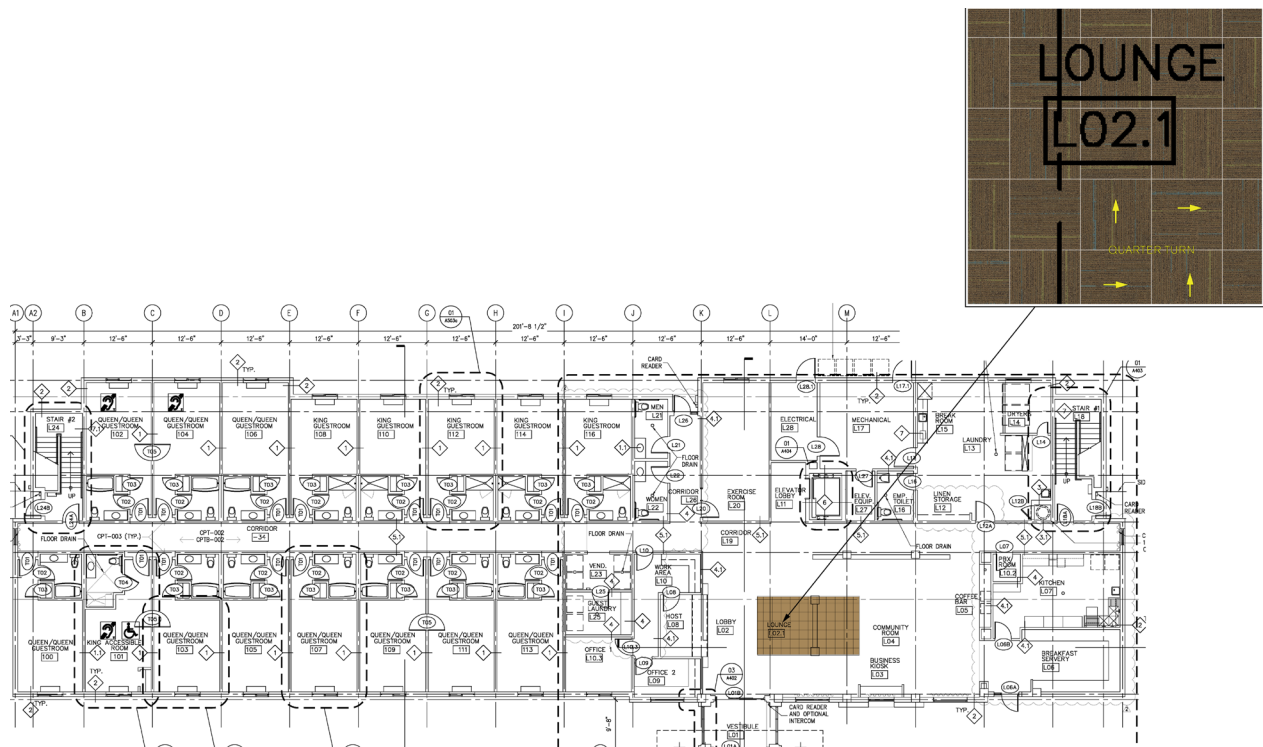
Lobby Product	Spec #	Color #	Size	Installation
Sidetrack A	CPT-002	104267 Aztec/Track	50cm x 50cm	Quarter Turn
Viva Colores	CPTB-002	101117 Marron	4" cove base	

Installation Specifications	Description
Tac Tiles for Installation (500 TacTiles/Roll)	60sq yds/Roll Adhesive
Pad / Underlayment (Optional-Not Required)	CushionBac Renew
2000 Plus	Adhesive to be used with pad

LOBBY INSTALLATION PLAN

Interface Hospitality

All quantities are estimates only and are based on plans provided. Site measurements and field verifications are recommended to ensure accuracy. These quantities are not intended to be used for material ordering purposes. Since waste factors may vary by installer, actual ordering quantities are the responsibility of your flooring contractor



LEGEND

A



PRODUCT: SIDETRACK
COLOR: 104267 AZTEC/ TRACK
SIZE: 50cm
INSTALLED: QUARTER TURN

Designed To Dream Meeting Room Prototype Order Information

CONTACT: Sofia Davila sofia.davila@interface.com | 347.633.0577 or your local Account Executive



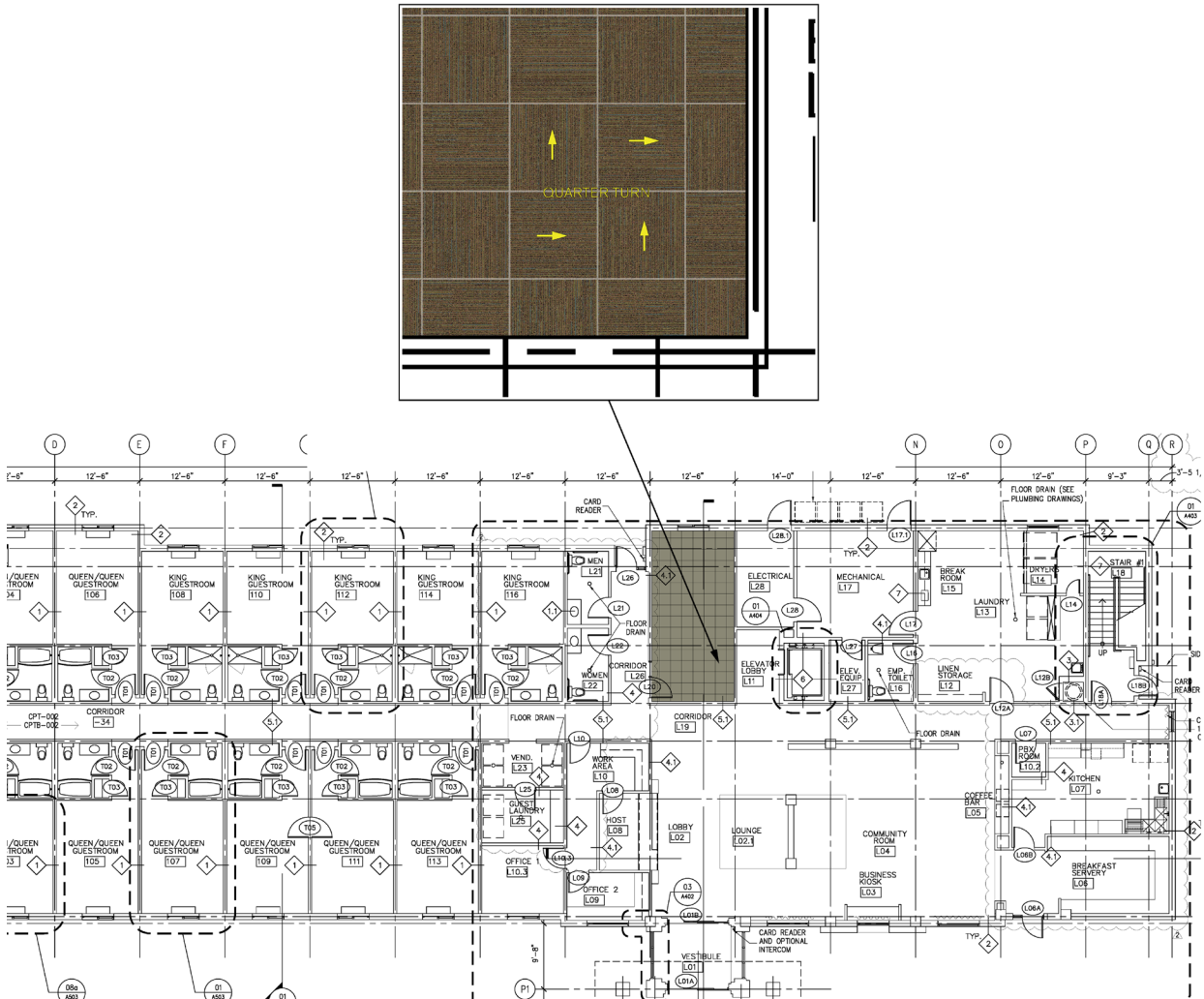
Meeting Room Product	Spec #	Color #	Size	Installation
Mainline A	CPT-004	104255 Aztec/Line	50cm x 50cm	Quarter Turn
Viva Colores	CPTB-004	101117 Marron	4" cove base	

Installation Specifications	Description
Tac Tiles for Installation (500 TacTiles/Roll)	60sq yds/Roll Adhesive
Pad / Underlayment (Optional-Not Required)	CushionBac Renew
2000 Plus	Adhesive to be used with pad


MEETING ROOM INSTALLATION PLAN

Interface Hospitality

All quantities are estimates only and are based on plans provided. Site measurements and field verifications are recommended to ensure accuracy. These quantities are not intended to be used for material ordering purposes. Since waste factors may vary by installer, actual ordering quantities are the responsibility of your flooring contractor



LEGEND



A

PRODUCT: MAIN LINE
COLOR: 104255 AZTEC/ LINE
SIZE: 50cm
INSTALLED: QUARTER TURN