

Interface®

MAINSTAY SUITES



APPROVED PROTOTYPES

Cambria Hotel & Suites
Comfort Inn
Comfort Suites
Everhome Suites
Mainstay Suites
Sleep Inn

WHY INTERFACE HOSPITALITY?

Interface Hospitality is a **CHOICE HOTELS** approved supplier of carpet tile and LVT. We are currently approved on the following prototypes:

- Cambria Hotel & Suites
- Comfort Inn
- Comfort Suites
- Everhome Suites
- Mainstay Suites
- Sleep Inn



SMART, EFFICIENT, AND BUILT TO LAST

Seamless Installation & Design Flexibility

Interface modular flooring tiles are designed for effortless installation with systems like TacTiles®—our no-glue solution that reduces VOCs and waste. Choose from multiple sizes and patterns to create tailored designs that fit your needs while optimizing material usage.

Cost Efficiency, Built-In

Reduce hidden costs with modular tiles—no roll sizes, no wasteful cuts, and an average of only 3-4% waste compared to broadloom's 14%. Our selective replacement system minimizes disruption, allowing you to replace flooring in stages and save up to 50% on replacement costs.

Durability You Can Count On

Every product is backed by a 15-year warranty, combining innovative features like Intersept® mold protection and Protekt2™ stain resistance for unparalleled longevity. With modular carpet, you're investing in a solution that performs and saves in the long run.



DESIGNED FOR PERFORMANCE AND PEOPLE

Innovative Fibers for Vibrant, Sustainable Style

All Interface carpet tiles are made from 100% solution-dyed nylon—engineered for vibrant, fade-resistant color without the need for water or harmful chemicals in production.

The Power of Integrated Systems

Interface tiles span a variety of sizes and textures, enabling endless creative possibilities. Our modular designs seamlessly integrate with LVT for holistic flooring solutions without transition strips, redefining design flexibility.

Health-Conscious Choices

Our Intersept[®] treatment guarantees mold protection and uses no halogens, heavy metals, or harmful chemicals. It's EPA-approved for safe use, ensuring healthier spaces for your guests and teams.

SUSTAINABILITY & END-OF-LIFE SOLUTIONS

Transparency at Every Step

Sustainability comes standard. With third-party certifications and 99% renewable energy powering our U.S. manufacturing, Interface delivers flooring that's both high-performing and environmentally conscious.

Recycling Made Simple with ReEntry[®]

Through ReEntry[®], we reclaim and recycle used carpet tiles and Sound Choice[™] LVT, keeping valuable materials out of landfills. As North America's only third-party-certified flooring recycling program, we set the benchmark for responsible end-of-life solutions.

Smarter Installations for a Smaller Footprint

TacTiles[®] eliminate the need for adhesives with carpet tiles, cutting installation waste by 90%. Combined with modular flooring's reduced waste profile, this innovation ensures your project leaves a lighter environmental footprint.

GUESTROOM PROTOTYPE ORDER INFORMATION

Carpet tiles **SAVE APPROXIMATELY 18%-20% IN PRODUCT WASTE** verses broadloom, based on prototype layout.

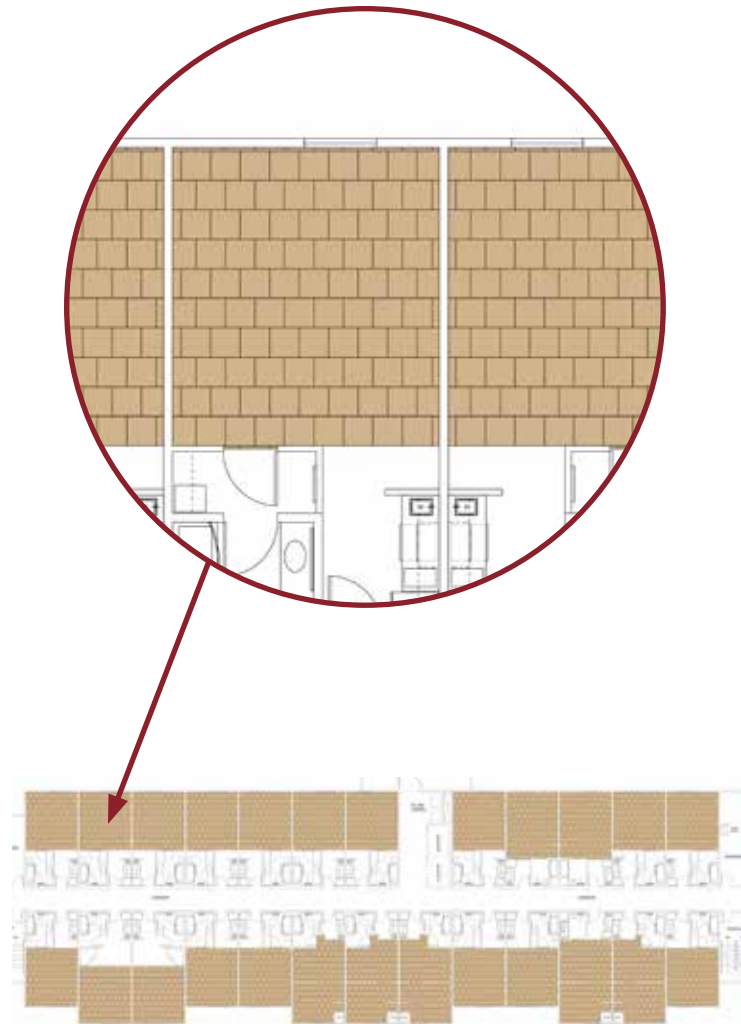
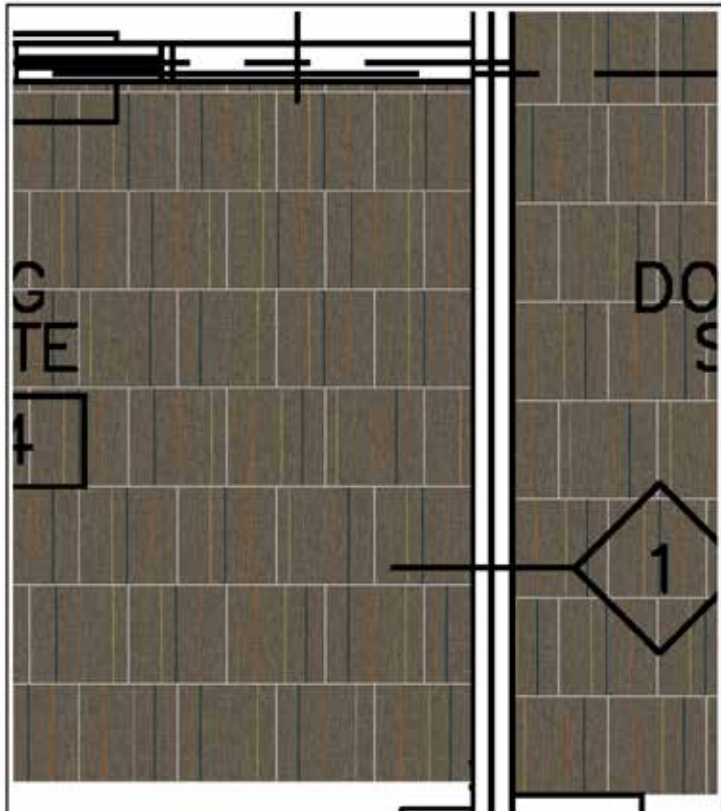


PRODUCT	ITEM#	COLOR#	SAMPLE#	SIZE	INSTALLATION
Custom	CPT-001 (Tile)-MS)	187107	265709-042	50 cm x 50 cm	Brick

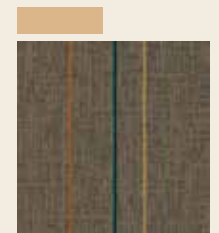
INSTALLATION SPECIFICATIONS	DESCRIPTION
XL2000 PLUS Adhesive	Double stick install

GUESTROOM INSTALLATION PLAN

All quantities are estimates only and are based on plans provided. Site measurements and field verifications are recommended to ensure accuracy. These quantities are not intended to be used for material ordering purposes. Since waste factors may vary by installer, actual ordering quantities are the responsibility of your flooring contractor.



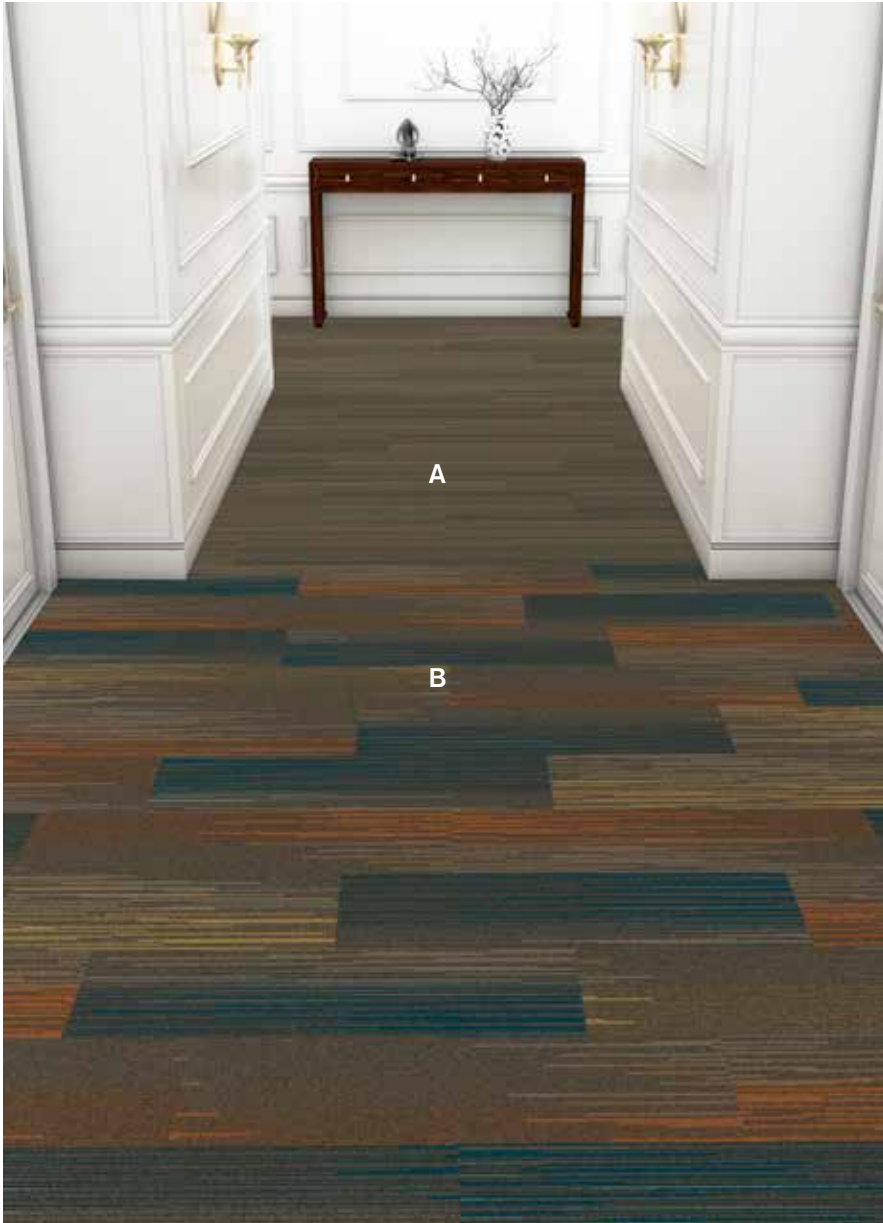
LEGEND



PRODUCT: Custom
ITEM: CPT-001 (Tile)-MS
COLOR/SAMPLE:
187107_265709-042
SIZE: 50 cm x 50 cm
INSTALLED: Brick

CORRIDOR PROTOTYPE ORDER INFORMATION

Carpet tiles **SAVE APPROXIMATELY 18%-20% IN PRODUCT WASTE** verses broadloom, based on prototype layout.

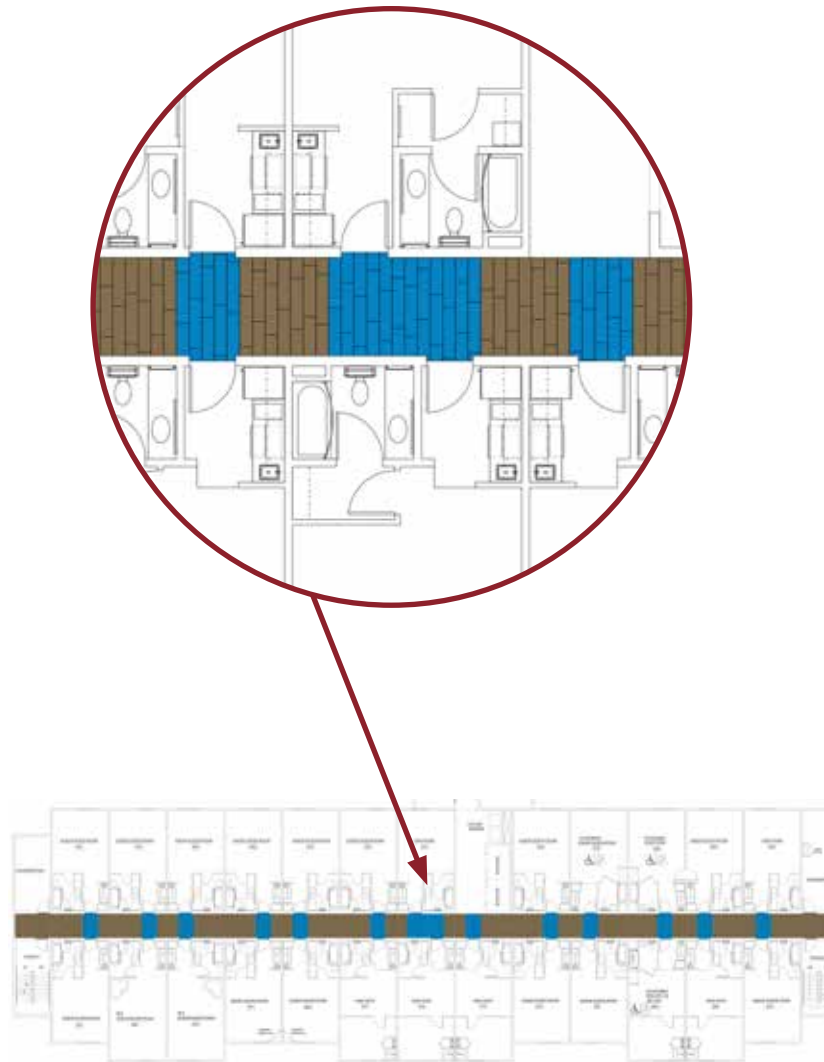


PRODUCT	COLOR#	SAMPLE#	SIZE	INSTALLATION
A SL910	189182	265709-052	25 cm x 1 m	Ashlar
B SL930	189183	265709-047	25 cm x 1 m	Ashlar

INSTALLATION SPECIFICATIONS	DESCRIPTION
XL2000 PLUS Adhesive	Double stick install

CORRIDOR INSTALLATION PLAN

All quantities are estimates only and are based on plans provided. Site measurements and field verifications are recommended to ensure accuracy. These quantities are not intended to be used for material ordering purposes. Since waste factors may vary by installer, actual ordering quantities are the responsibility of your flooring contractor.



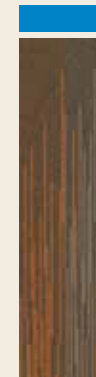
LEGEND

A



PRODUCT: SL910
COLOR/SAMPLE:
189182_265709-052
SIZE: 25 cm x 1 m
INSTALLED: Ashlar

B



PRODUCT: SL930
COLOR/SAMPLE:
189183_265709-047
SIZE: 25 cm x 1 m
INSTALLED: Ashlar

LOBBY PROTOTYPE ORDER INFORMATION

Carpet tiles **SAVE APPROXIMATELY 18%-20% IN PRODUCT WASTE** versus broadloom, based on prototype layout.

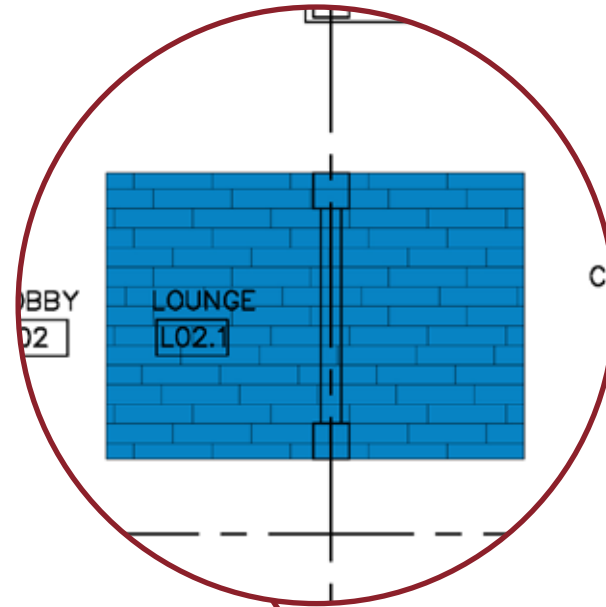


PRODUCT	ITEM#	COLOR#	SAMPLE#	SIZE	INSTALLATION
SL930	CPT-002	189183	265709-047	25 cm x 1 m	Ashlar

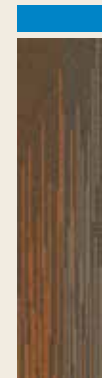
INSTALLATION SPECIFICATIONS	DESCRIPTION
XL2000 PLUS Adhesive	Double stick install

LOBBY INSTALLATION PLAN

All quantities are estimates only and are based on plans provided. Site measurements and field verifications are recommended to ensure accuracy. These quantities are not intended to be used for material ordering purposes. Since waste factors may vary by installer, actual ordering quantities are the responsibility of your flooring contractor.



LEGEND



PRODUCT: SL930
ITEM: CPT-002
COLOR/SAMPLE:
189183_265709-047
SIZE: 25 cm x 1 m
INSTALLED: Ashlar